

Agency for Cultural Resource Management

Specialists in Archaeological Studies and Heritage Resource Management

PO Box 159 Riebeeck West 7306 Phone/Fax 022-461 2755
E-mail: acrm@wcaccess.co.za Cellular: 082 321 0172

20 April 2006

Att: Ms Cornelia van Zyl
I.C. @ Plan
10 A Pastorie Park
Somerset West
7130

Dear Ms van Zyl

PHASE 1 ARCHAEOLOGICAL IMPACT ASSESSMENT ERF 6330 THE STRAND GORDONS BAY WESTERN CAPE PROVINCE

1. Introduction and brief

I.C. @ Plan Town Planners¹, on behalf of Mr Pieter du Toit, requested that the Agency for Cultural Resource Management conduct a Phase 1 Archaeological Impact Assessment for a proposed housing development on Erf 6330 Gordon's Bay (registered in the Strand), in the Western Cape Province.

The affected property is currently zoned Agriculture. The intention is to subdivide and rezone the property into two portions to allow for the establishment of a residential development consisting of 112 sectional title units, on Portion 1. The remainder (i.e. Portion 2) is earmarked for conservation purposes (Private Open Space).

The extent of the proposed development (1.7720 ha) falls within the requirements for an archaeological impact assessment as required by Section 38 of the South African Heritage Resources Act (No. 25 of 1999).

The site visit and assessment took place on 19 April 2006.

A locality map is illustrated in Figure 1.

An aerial photograph of the site is illustrated in Figure 2.

2. Terms of reference

The Terms of Reference for the Archaeological Impact Assessment are to:

- Identify and map heritage resources on the proposed site;
- Determine the importance of heritage resources on the proposed site;
- Determine and assess the potential impacts of the proposed development on the heritage resources, and
- Recommend mitigation measures to minimise impacts associated with the proposed development.

¹ IC @ Plan is represented by Ms Cornelia van Zyl Fax (021) 850 0401

A 'Notification to Heritage Western Cape of Intent to Develop' checklist has been completed by the archaeologist (on behalf of the applicant), and submitted to Heritage Western Cape Built Environment and Landscape Committee (BELCOM) for comment.

A copy of the Phase 1 Archaeological Impact Assessment report has been included with this submission.

3. The site

Erf 6330, The Strand (GPS reading S° 34 08 496 E 18° 51 523 set on map datum WGS 84) is located in Disa Street, Gordon's Bay. The property is bordered on the north east by Erf 6331 (vacant land) and on the south west by Erf 6329 (Crystal Creek development). The subject property is currently accessed from Somerset Road, Gordon's Bay.

The level property is vacant and surrounded by a vibacrete wall. The proposed site has very recently been cleared of alien vegetation, and is totally degraded (Figures 3-6). Dumping of building rubble and domestic refuse is evident. Surrounding land use comprises vacant land (small holdings) and rapidly increasing residential development.

4. Approach to the study

The property was subjected to a foot survey.

5. Results of the study

No pre-colonial archaeological heritage remains were located on the property.

The impact of the proposed development on archaeological heritage remains is likely to be very low.

The probability of locating significant archaeological heritage remains during implementation of the project is likely to be highly improbable.

6. Conclusion

The archaeological assessment has shown that Erf 6330 The Strand, is suitable for development.

Yours sincerely



Jonathan Kaplan

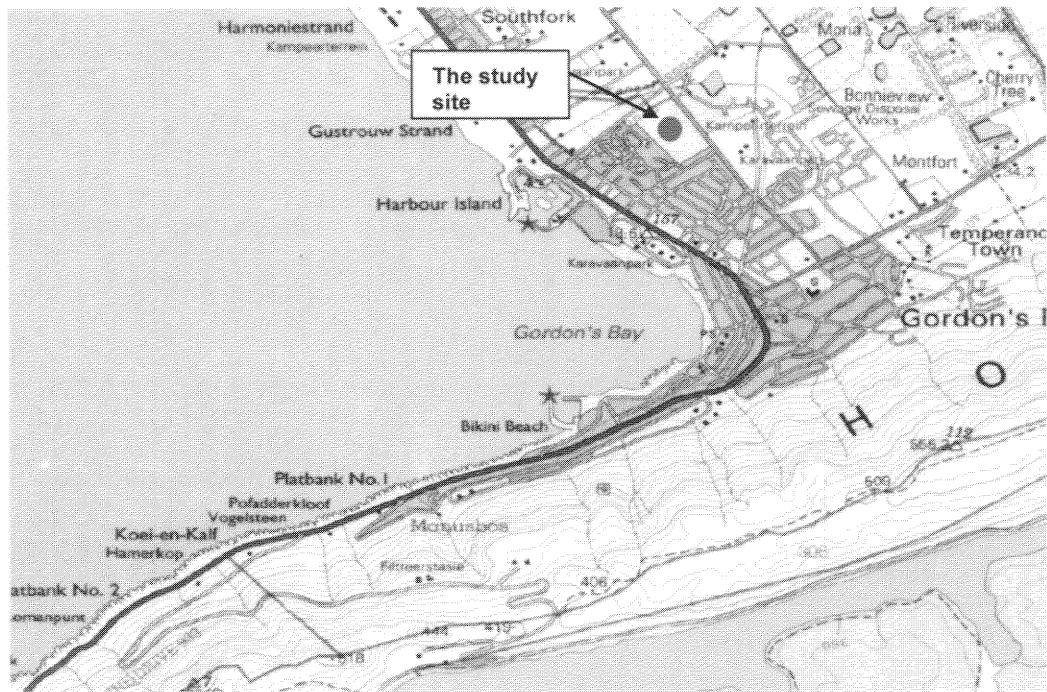


Figure 1. Locality map (3418 BB Somerset West).



Figure 2. Aerial photograph of the site.

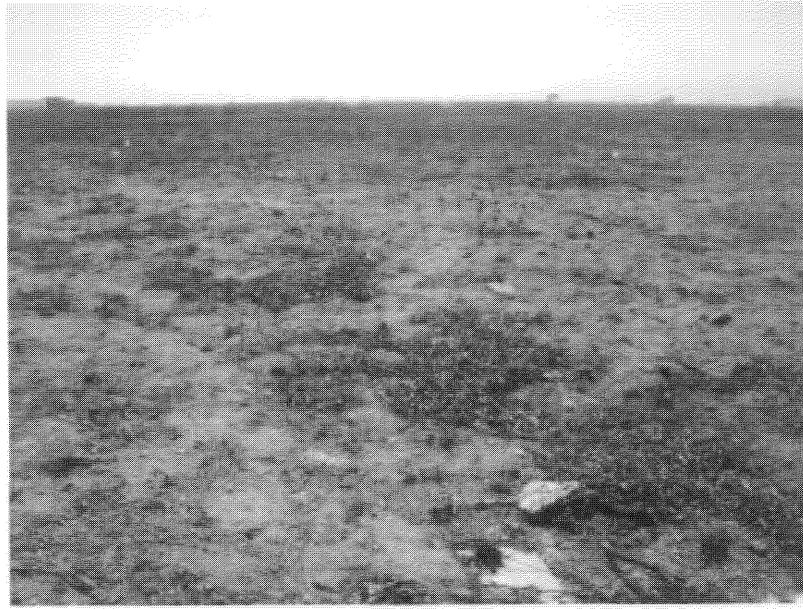


Figure 3. Erf 6330 Strand. View of the site facing west.



Figure 4. Erf 6330 Strand. View of the site facing north east. The Helderberg Mountains are in the distance.

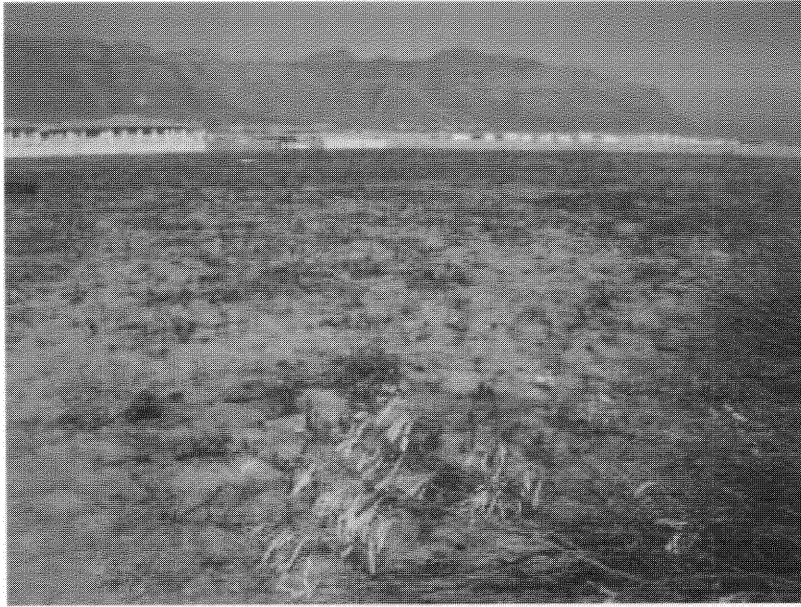


Figure 5. Erf 6330 Strand. View of the site facing south east. The Gordons Bay mountains are in the distance.



Figure 6. Erf 6330 Strand. View of the site facing south west.