

Prepared for:
LANDSCAPE DYNAMICS
ESKOM NORTHERN REGION

**A PHASE I HERITAGE IMPACT ASSESSMENT (HIA) STUDY
FOR THE UPGRADING OF ESKOM'S VEEKRAAL
SUBSTATION ON THE FARM VEEKRAAL 221 IN THE
MADIBENG DISTRICT OF THE NORTH-WEST PROVINCE OF
SOUTH AFRICA**

Prepared by:
Dr Julius CC Pistorius
**Archaeologist and Heritage
Management Consultant**
352 Rosemary Street
Lynnwood 0081
Pretoria

Tel and fax 012 3485668
Cell 0825545449
May 2007
Member ASAPA

EXECUTIVE SUMMARY

A Phase I Heritage Impact Assessment (HIA) study as required in terms of Section 38 of the National Heritage Resources Act (Act 25 of 1999) was done for the upgrading of Eskom's Veekraal Substation on Veekraal 221 in the Madibeng District in the North-West Province of South Africa. The aims with the Phase I HIA study was to establish whether any of the types and ranges of heritage resources ('national estate') as outlined in the National Heritage Resources Act (Act 25 of 1999) do occur in or near the Veekraal Substation that may be affected by the expansion of the substation

The Phase I HIA study for the Veekraal Substation revealed none of the types and ranges of heritage resources as outlined in Section 3 of the National Heritage Resources Act (No 25 of 1999).

There is consequently no reason from a heritage point of view why Eskom should not continue with the upgrading of the Veekraal Substation.

CONTENTS

Executive summary	2
1 INTRODUCTION	4
2 THE PROJECT AREA	5
3 METHODOLOGY	6
3.1 Assumptions and limitations	6
3.2 Chance finds	6
4 THE PHASE I HERITAGE IMPACT ASSESSMENT STUDY	7
5 CONCLUSION AND RECOMMENDATIONS	8
6 SELECT BIBLIOGRAPHY	9

1 INTRODUCTION

Eskom intends to expand the existing Veekraal Substation on the farm Veekraal 221 near the villages of Lethabile and Maboloko in the Brits (Madibeng) District in the Central Bankveld of the North-West Province of South Africa.

As the expansion of the substation may have an impact on heritage resources in or near the Veekraal Substation, Eskom commissioned the author to undertake a Phase I Heritage Impact Assessment (HIA) study for the Veekraal Substation with the following aims:

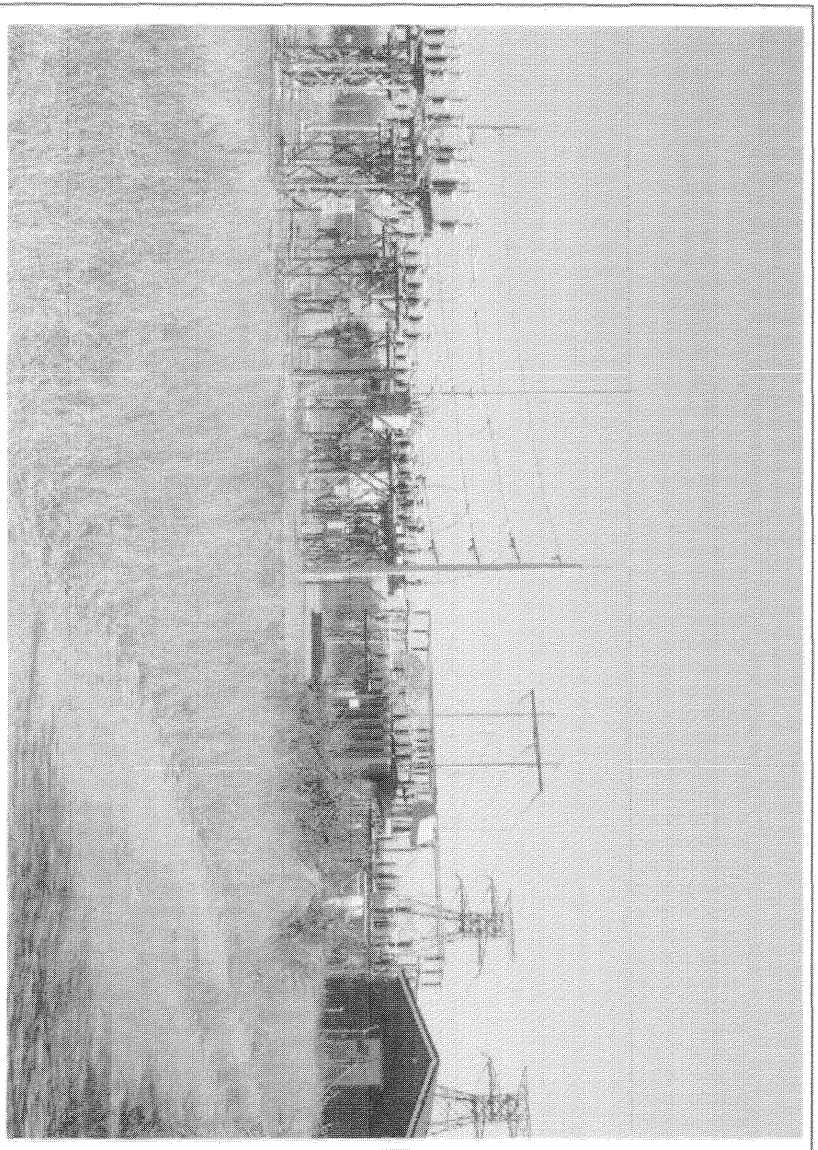
- To establish whether any of the types and ranges of heritage resources as outlined in Section 3 of the National Heritage Resources Act (Act 25 of 1999) occur in or near the existing Veekraal Substation, and if so, to establish the significance of these heritage resources.
- To establish whether such heritage resources may be affected by the expansion of the Veekraal Substation, and if so, to determine possible mitigation measures that can be applied to these heritage resources.

2 THE PROJECT AREA

The Veekraal Substation is located on the farm Veekraal 221 in the Rustenburg (Bafokeng) District in the Central Bankenveld of the North-West Province of South Africa. The substation is located on a level stretch of land with an extensive series of hills located further to the north of the substation.

The villages of Lethabile and Maboloko are located to the east of Veekraal Substation with the town of Brits (Madibeng) thirty kilometres further to the south (Wolhuterskop (Bapong) [2527DA]: 1: 50 000).

Figure 1 - The Veekraal Substation and surrounding area is still relatively pristine. An extensive series of hills to the north of the substation may be the only geographical feature in the larger project area that may hold heritage resources of significance (below).



3 METHODOLOGY

This Phase I HIA study was conducted by means of the following:

- Surveying the Veekraal Substation and surrounding areas on foot.
- Briefly surveying literature relating to the pre-historical and historical context of the Veekraal Substation.
- Consulting maps of the Veekraal Substation as well as its peripheral areas.
- Consulting archaeological (heritage) data bases such as the ones kept at the North-West Provincial Heritage Resources Agency as well as at Museum Africa in Pretoria (Tshwane).
- Synthesising all information obtained from the literature survey, maps and data bases with the evidence derived from the fieldwork in this report.

3.1 Assumptions and limitations

It is possible that this Phase HIA study may have missed heritage resources as these may occur in thick clumps of vegetation while others may lie below the surface of the earth and may only be exposed once development commences.

3.2 Chance finds

If any heritage resources of significance is exposed during the upgrading of the Veekraal Substation the South African Heritage Resources Authority (ASAPHA) should be notified immediately, all construction activities must be seized and an archaeologist accredited with the Association for Southern African Professional Archaeologist (ASAPPA) should be notify in order to determine appropriate mitigation measures for the discovered finds. This may include obtaining the necessary authorisation (permits) from SAHRA to conduct the mitigation measures.

4 THE PHASE I HERITAGE IMPACT ASSESSMENT STUDY

The Phase I HIA study for the Veekraal Substation revealed none of the types and ranges of heritage resources as outlined in Section 3 of the National Heritage Resources Act (No 25 of 1999).

5 CONCLUSION AND RECOMMENDATIONS

The Phase I HIA study for the Veekraal Substation revealed none of the types and ranges of heritage resources as outlined in Section 3 of the National Heritage Resources Act (No 25 of 1999).

There is consequently no reason from a heritage point of view why Eskom should not continue with the upgrading of the Veekraal Substation.

A handwritten signature in black ink, reading "Julius CC Pistorius". The signature is written in a cursive style with a horizontal line at the end.

Dr Julius CC Pistorius
Archaeologists &
Heritage Management Consultatnt

6 SELECT BIBLIOGRAPHY

- Breutz, P.L. 1953. *The tribes of the Rustenburg and the Plianesberg districts*. Pretoria: Government Printer.
- Coetzee, R. D. 1987. *Batokeng family law and law of succession*. Revised edition. Pretoria: Sabra.
- Horn, A.C. 1996. Okkupasie van die Bankeveld voor 1840 n.C.: 'n sintese. *Suid Afrikaanse Tydskrif vir Etnologie*. 19(1), 17-27.
- Mason, R.J. 1968. Iron Age settlement in the Transvaal and Natal revealed by aerial photography and excavation. *African Studies*, 27(4)
- Mokgathe, N. 1971. *Autobiography of an unknown South African*. London: University of California Press.
- Pistorius, J.C.C. 1999. *Archaeological survey and assessment of Norite mines on the farms Tweedepoort (283JQ) and Boschpoort (284JQ) in the Rustenburg district. Incorporating the Taylor mining area, the Bekker mining area, the Transvaal mining area and the Springbok mining area*. Addendum to the Environmental Management Programme Reports done for Marlin and Kelgran Norite. Report prepared for Marlin and Kelgran Norite Mines. (89pp).
- Pretorius, Z.L. 1967. *Die Geskiedenis van Rustenburg, 1851-1918*. MA verhandeling. Potchefstroom: PU vir CHO.

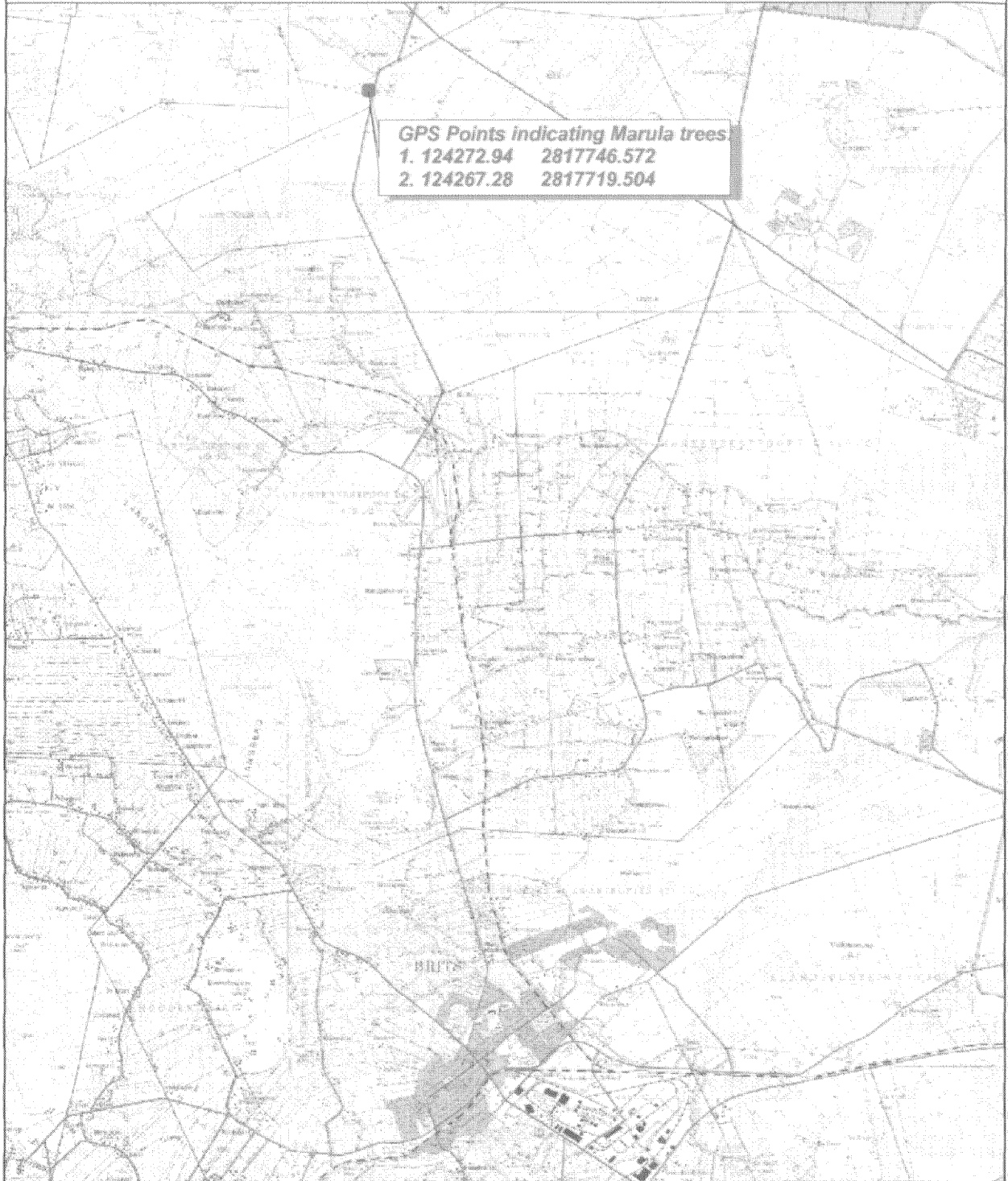
LOCALITY MAP:

PROPOSED ESKOM EXTENTION OF VEEKRAAL SUBSTATION AND NEW TELECOMMUNICATION TOWER ON PORTION 45 (A PORTION OF PORTION 23) OF FARM KLIPKOP 245-JQ



Environmental Impact Assessment Process, undertaken by Landscape Dynamics Environmental Consultants

Scale 1 : 105 000



Adapted from 1 : 50 000 topographical map 2527DA, 2527DB, 2527BC and 2527BD

Date: 12 May 2007 / U Naudé

