

9/2/214/0007

Recvd: 14 Sept. 07

Prepared for:

LANDSCAPE DYNAMICS

ESKOM NORTHERN REGION

**A PHASE I HERITAGE IMPACT ASSESSMENT (HIA) STUDY
FOR THE UPGRADING OF ESKOM'S NOOITGEDACHT
SUBSTATION ON THE FARM WINTERSHOEK 451 NEAR
CAROLINA IN THE MPUMALANGA PROVINCE OF SOUTH
AFRICA**

Prepared by:

Dr Julius CC Pistorius

Archaeologist and Heritage

Management Consultant

352 Rosemary Street

Lynnwood 0081

Pretoria

Tel and fax 012 3485668

Cell 0825545449

May 2007

Member ASAPA

EXECUTIVE SUMMARY

A Phase I Heritage Impact Assessment (HIA) study as required in terms of Section 38 of the National Heritage Resources Act (Act 25 of 1999) was done for the upgrading of Eskom's Nooitgedacht Substation on Wintershoek 451 near Carolina in the Mpumalanga Province of South Africa. The aims with the Phase I HIA study was to establish whether any of the types and ranges of heritage resources ('national estate') as outlined in the National Heritage Resources Act (Act 25 of 1999) do occur in or near the Nooitgedacht Substation that may be affected by the expansion of the substation

The Phase I HIA study for the Nooitgedacht Substation revealed none of the types and ranges of heritage resources as outlined in Section 3 of the National Heritage Resources Act (No 25 of 1999).

There is consequently no reason from a heritage point of view why Eskom should not continue with the upgrading of the Nooitgedacht Substation.

CONTENTS

Executive summary	2
1 INTRODUCTION	4
2 THE PROJECT AREA	5
3 METHODOLOGY	6
3.1 Assumptions and limitations	6
3.2 Chance finds	6
4 THE PHASE I HERITAGE IMPACT ASSESSMENT STUDY	7
5 CONCLUSION AND RECOMMENDATIONS	8

1 INTRODUCTION

Eskom intends to expand the existing Nooitgedacht Substation on the farm Wintershoek 451 north of Carolina in the Mpumalanga Province of South Africa.

As the expansion of the substation may have an impact on heritage resources in or near the Nooitgedacht Substation, Eskom commissioned the author to undertake a Phase I Heritage Impact Assessment (HIA) study for the Nooitgedacht Substation with the following aims:

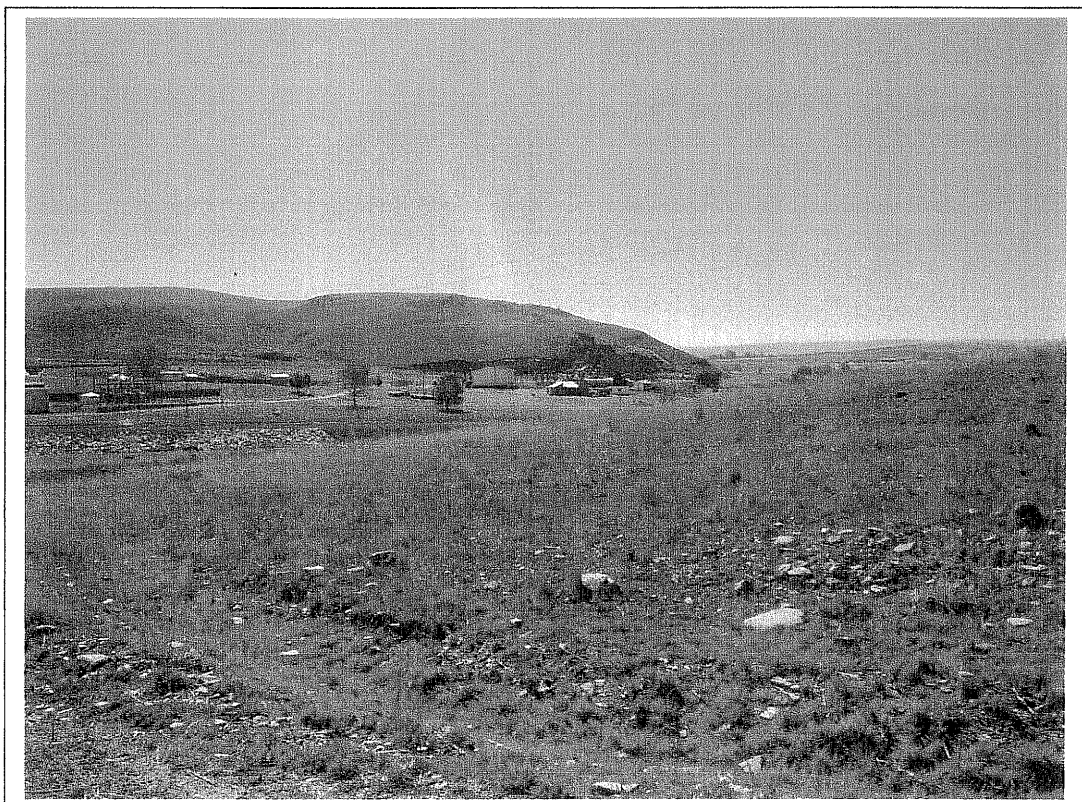
- To establish whether any of the types and ranges of heritage resources as outlined in Section 3 of the National Heritage Resources Act (Act 25 of 1999) occur in or near the existing Nooitgedacht Substation, and if so, to establish the significance of these heritage resources.
- To establish whether such heritage resources may be affected by the expansion of the Nooitgedacht Substation, and if so, to determine possible mitigation measures that can be applied to these heritage resources.

2 THE PROJECT AREA

The Nooitgedacht Substation is located on the farm Wintershoek 451 north of Carolina in the Mpumalanga Province of South Africa. The substation is located on a stretch of land directly to the east of the wall of the Nooitgedacht Dam.

The Nooitgedacht Substation is surrounded with infrastructure such as the Nooitgedacht Dam (west), Eskom's offices (north and north-east) and a second larger substation (north-east). Natural features near the substation include a low mountain range to the north and the Komati River leaving the Nooitgedacht Dam to the south (Moedig) [2530CC]: 1: 50 000).

Figure 1- The Nooitgedacht Substation next to the Nooitgedacht Dam's wall. A low mountain range to the north, infrastructure north and north-east and the Komati River south demarcate the Nooitgedacht Project Area (below).



3 METHODOLOGY

This Phase I HIA study was conducted by means of the following:

- Surveying the Nooitgedacht Substation and surrounding areas on foot.
- Briefly surveying literature relating to the pre-historical and historical context of the Nooitgedacht Substation.
- Consulting maps of the Nooitgedacht Substation as well as its peripheral areas.
- Consulting archaeological (heritage) data bases such as the ones kept at the Mpumalanga Provincial Heritage Resources Agency as well as at Museum Africa in Pretoria (Tshwane).
- Synthesising all information obtained from the literature survey, maps and data bases with the evidence derived from the fieldwork in this report.

3.1 Assumptions and limitations

It is possible that this Phase I HIA study may have missed heritage resources as these may lie below the surface of the earth and may only be exposed once development commences.

3.2 Chance finds

If any heritage resources of significance is exposed during the upgrading of the Nooitgedacht Substation the South African Heritage Resources Authority (ASAPA) should be notified immediately, all construction activities must be seized and an archaeologist accredited with the Association for Southern African Professional Archaeologist (ASAPA) should be notify in order to determine appropriate mitigation measures for the discovered finds. This may include obtaining the necessary authorisation (permits) from SAHRA to conduct the mitigation measures.

4 THE PHASE I HERITAGE IMPACT ASSESSMENT STUDY

The Phase I HIA study for the Nooitgedacht Substation revealed none of the types and ranges of heritage resources as outlined in Section 3 of the National Heritage Resources Act (No 25 of 1999).

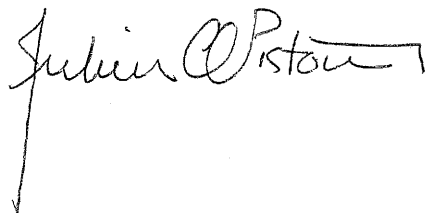


Figure 2- The Phase I survey for the upgrading of the Nooitgedacht Substation revealed none of the types and ranges of heritage resources as outlined in Section 3 of the National Heritage Resources Act (No 25 of 1999).

5 CONCLUSION AND RECOMMENDATIONS

The Phase I HIA study for the Nooitgedacht Substation revealed none of the types and ranges of heritage resources as outlined in Section 3 of the National Heritage Resources Act (No 25 of 1999).

There is consequently no reason from a heritage point of view why Eskom should not continue with the upgrading of the Nooitgedacht Substation.

A handwritten signature in black ink, reading "Julius CC Pistorius". The signature is written in a cursive style with a long vertical line extending downwards from the 'P'.

Dr Julius CC Pistorius
Archaeologists &
Heritage Management Consultatnt