

**THE EXHUMATION AND RELOCATION OF GRAVES  
ON THE FARM BLESBOKFONTEIN 311S,  
WITBANK DISTRICT, MPUMULANGA PROVINCE**

For:

**GOOD HOPE FUNERALS  
(XSTRATA COAL MINE, ARTHUR TAYLOR COLLIERY)  
3 VAN RIEBEECK STR  
OGIES  
2230**

Work conducted and report prepared by the:

**NATIONAL CULTURAL HISTORY MUSEUM  
P.O. Box 28088  
SUNNYSIDE  
0132**

Telephone - (012) 324 6082  
Telefax - (012) 328 5173

**REPORT: 2005KH62**

Date of work: *April 2005*      Date of report: *May 2005*



## SUMMARY

The National Cultural History Museum was contracted by Good Hope Funerals for Xstrata Coal Mine to exhume and relocate 24 graves situated on the farm Blesbokfontein 311S near Ogies in the Witbank District, Mpumalanga Province. The extension of the existing Xstrata Coal Mine is being undertaken in this area, and these graves, (all older than 60 years or unidentified), will be directly impacted upon by the mining operations. The graves are all located in one informal cemetery.

Detailed photographic documentation of each grave and burial was conducted, while the remains were also measured and examined by the archaeologists before removal. The graves were relocated to Donna Memorial Park Cemetery in Ogies.

**CONTENTS**

SUMMARY

CONTENTS

AIMS

LEGAL REQUIREMENTS

METHODOLOGY

DESCRIPTION OF THE AREA

DISCUSSION

CONCLUSIONS AND RECOMMENDATIONS

REFERENCES

PROJECT TEAM

APPENDIX 1- NCHM HUMAN REMAINS RELOCATION BURIAL FORMS

**THE EXHUMATION AND RELOCATION OF GRAVES  
ON THE FARM BLESBOKFONTEIN 31IS,  
WITBANK DISTRICT, MPUMULANGA PROVINCE**

**AIMS**

The aims of the archaeological exhumation of the 24 burials on the farm were the following:

- (a) to identify and locate all possible human remains contained in these burials to facilitate their complete and successful relocation
- (b) detailed and complete documentation of the graves, burials and their contents, using archaeological methodology and standard museum practice

We were informed by the client about the extent of the area that will be affected by the proposed development. They also indicated the position of each grave that had to be exhumed and relocated. The work was to be confined to this area.

**LEGISLATIVE REQUIREMENTS**

Aspects concerning the conservation of cultural resources are mainly dealt with in two acts. These are the South African Heritage Resources Act (Act 25 of 1999) and the Environmental Conservation Act (Act 73 of 1989).

**South African Heritage Resources Act**

**Archaeology, palaeontology and meteorites**

Section 35(4) of this act states that no person may, without a permit issued by the responsible heritage resources authority:

- (a) destroy, damage, excavate, alter, deface or otherwise disturb any archaeological or palaeontological site or any meteorite;
- (b) destroy, damage, excavate, remove from its original position, collect or own any archaeological or palaeontological material or object or any meteorite;
- (c) trade in, sell for private gain, export or attempt to export from the Republic any category of archaeological or palaeontological material or object, or any meteorite; or
- (d) bring onto or use at an archaeological or palaeontological site any excavation equipment or any equipment which assists in the detection or recovery of metals or archaeological and palaeontological material or objects, or use such equipment for the recovery of meteorites.
- (e) alter or demolish any structure or part of a structure which is older than 60 years as protected.

The above mentioned may only be disturbed or moved by an archaeologist, after receiving a permit from the South African Heritage Resources Agency.



### Human remains:

In terms of Section 36(3) of the National Heritage Resources Act, no person may, without a permit issued by the relevant heritage resources authority:

- (a) destroy, damage, alter, exhume or remove from its original position of otherwise disturb the grave of a victim of conflict, or any burial ground or part thereof which contains such graves;
- (b) destroy, damage, alter, exhume or remove from its original position or otherwise disturb any grave or burial ground older than 60 years which is situated outside a formal cemetery administered by a local authority;  
or
- (c) bring onto or use at a burial ground or grave referred to in paragraph (a) or (b) any excavation, or any equipment which assists in the detection or recovery of metals.

Human remains that are less than 60 years old are subject to provisions of the Human Tissue Act (Act 65 of 1983) and to local regulations.

Exhumation of graves must conform to the standards set out in the **Ordinance on Excavations (Ordinance no. 12 of 1980)** (replacing the old Transvaal Ordinance no. 7 of 1925). Permission must also be gained from the descendants (where known), the National Department of Health, Provincial Department of Health, Premier of the Province and local police. Furthermore, permission must also be gained from the various landowners (i.e. where the graves are located and where they are to be relocated) before exhumation can take place.

Human remains can only be handled by a registered undertaker or an institution declared under the **Human Tissues Act (Act 65 of 1983 as amended)**.

### **Environmental Conservation Act**

This act states that a survey and an evaluation of cultural resources should be undertaken in areas where development, which will change the face of the environment, is to be made. The impact of the development on the cultural resources should also be determined and proposals to mitigate this impact are to be formulated.

## METHODOLOGY

### Exhumation and relocation

After detailed documentation of the grave, the graves were then opened up to the level of the coffin, coffin wood, or when the first bone material was encountered. The undertakers opened the graves. The archaeologists then opened up the remains carefully using required excavation equipment, before detailed documentation commenced. After documentation, the remains were removed and placed in new coffins supplied by the funeral undertaker, and taken to the new cemetery to be re-interred.

### Documentation

The documentation comprised the following:

**Photographic** - Photo's of each site prior to excavation and exhumation, as well as of each grave was taken. Each burial, with its contents in situ, was also photographically documented.

**GPS Data** - A GPS reading for each site was taken in order to locate it on a map of the area.

**Burial Recording Forms** - These forms were used to record all relevant details of each grave and burial, such as dimensions, position, contents, preservation of remains, cultural material found and all other observations regarding the skeletal remains (See Appendix 1 for forms).

## DESCRIPTION OF THE AREA

The site is located on the farm Blesbokfontein 311S near Ogies in the Witbank district of Mpumalanga province. It lies between 26°06'09.8" S & 29°10'13.2" E. The site is a small informal cemetery containing 41 graves. All the graves are to be relocated to the Donna Memorial Park Cemetery in Ogies. Besides the skeletal remains, all cultural material recovered with it, as well as the headstones, were also removed to the new cemetery. The informal cemetery is situated on old farm lands near to a mielie field and next to a marshy area and small stream.

## DISCUSSION

A total of 24 graves, that were either 60 years and over or unknown, were documented by the archaeologist, then exhumed and relocated. The other 17 graves were identified as being younger than 60 years by their relatives.

Out of the 24 graves 10 were older than 60 years while the other 14 graves were unknown. The 10 graves that are older than 60 years, 8 belong to the Dladla family and the other 2 belong to the Fakude family. Mr. Dladla who identified the graves helped in the exhumation and relocation of his family graves. The exhumation process and the documentation of Mr Dladla's family, was explained to him and was understood by Mr Dladla.



Mr Dladla helping to exhume his family members graves

The graves were opened to find that the soil was extremely wet and in most cases the water table was much higher than where the corrugated iron or pieces of coffin wood was found. The skeletal material in the graves had been totally disintegrated by the water and all that was left was a greyish layer of very damp soil. This greyish damp soil was photographed, measured, and placed into the new coffins, so that they could be reburied. (See Appendix 1)

In Grave 15, an unknown grave, two very small, disintegrated femur bones were found. A copper necklace or bangle was also found in this grave. In Grave 7, belonging to Thembi Sanna Dladla a silver shilling was found on top of the grave.

All material found on or in the graves that were not human remains were also placed in the coffins and relocated with the human remains.

## **CONCLUSIONS AND RECOMMENDATIONS**

To conclude, it is possible to say that the 24 graves older than 60 years of age and unknown were successfully exhumed from this informal cemetery and relocated to the Donna Park Memorial Cemetery. In the possible event that more graves of this age are identified in the area during any phase of the new mining operations, archaeologists should be called in to investigate. These graves will then also have to be exhumed and relocated. Furthermore, any sites of historical and/or archaeological importance that will be directly impacted upon by the operations should also be investigated.

## **REFERENCES**

### Sources

Information supplied by Good Hope Funerals.

## **PROJECT TEAM**

F. Teichert, Project Leader and Researcher (Curator: Human Skeletal Remains),  
NCHM

I. Masiteng, Assistant Researcher, NCHM



1. HEAD STONE a. Yes  b. No

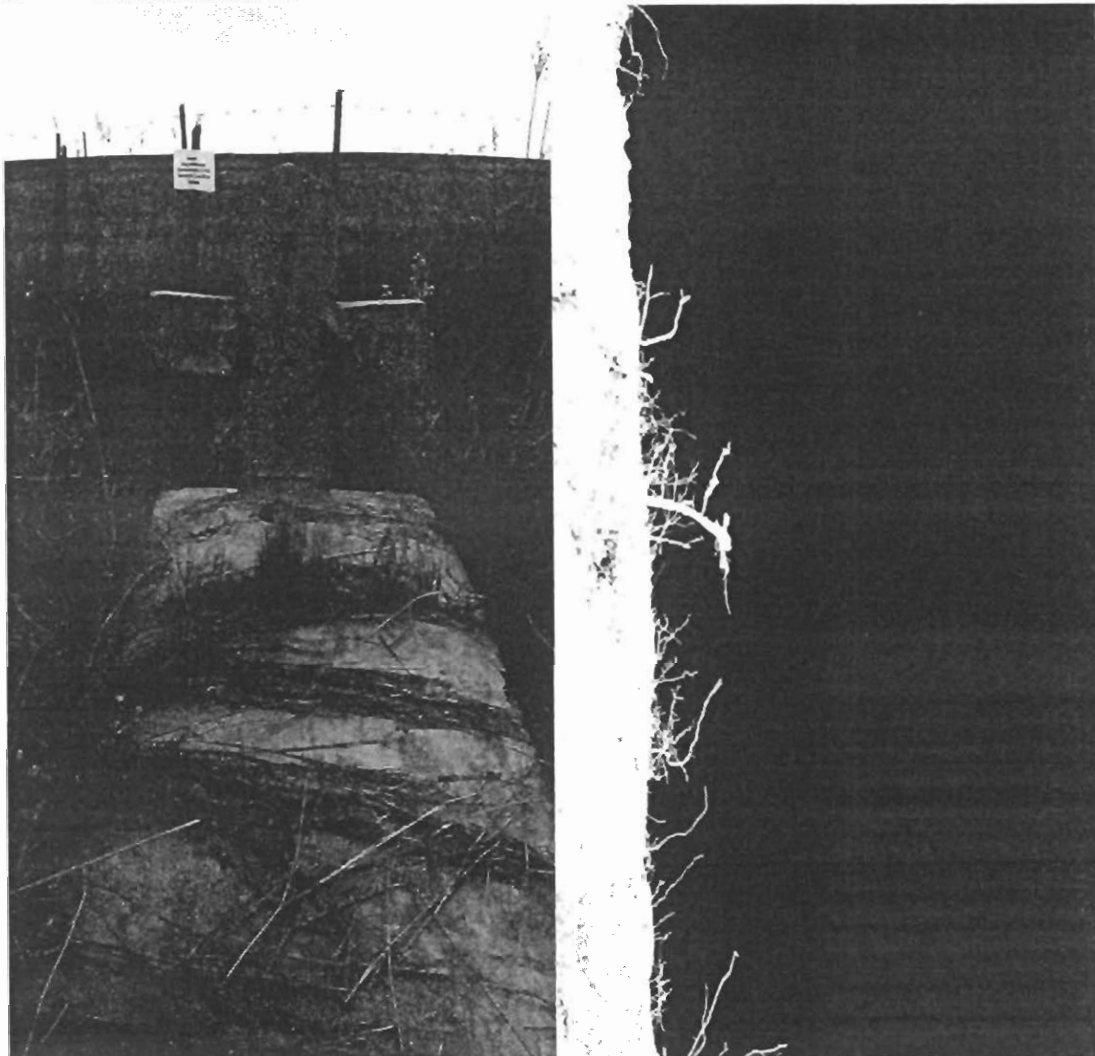
2. HEAD STONE DIMENSIONS  
a. Max length 56cm  
b. Max width 76.5cm  
c. Thickness 12cm

3. GRAVE PLOT DIMENSIONS  
a. Max length 2m35cm  
b. Max width 86.5cm  
c. Thickness 16cm

4. HEAD STONE INSCRIPTION  
a. No inscription is visible on the head stone. The head stone is in the shape of a cross with a star motif. This grave has been identified by the family and it belongs to a MAGRITA DLADLA, who died in 1935

5. HEAD STONE MATERIAL  
a. Home made concrete

6. PHOTOGRAPHS



**NATIONAL CULTURAL HISTORY MUSEUM  
HUMAN REMAINS BURIAL FORMS**

Feature No. <u>2</u>	Site No. <u>A</u>
G.P.S <u>26°06'09.8"S 29°10'13.2"E</u>	Farm <u>Blesbokfontein</u>
Burial No. <u>2</u>	Province <u>Mpumulanga</u>
Reservoir <u>Donna Memorial Park</u>	Country <u>South Africa</u>

**1. LOCATION**

a. Square \_\_\_\_\_  
 b. Horizontal \_\_\_\_\_  
 c. Depth from surface 1m86cm  
 d. Depth from datum \_\_\_\_\_

**2. BURIAL TYPE**

a. Extended X d. Reburial \_\_\_\_\_  
 b. Flexed \_\_\_\_\_ e. Cremation \_\_\_\_\_  
 c. Semiflexed \_\_\_\_\_ f. Part crem \_\_\_\_\_  
 g. Other \_\_\_\_\_

**3. BURIAL DIMENSIONS**

a. Max length 2m02cm Dir. N-S  
 b. Max width 67cm Dir. E-W  
 c. Thickness 35cm

**4. DEPOSITION**

a. Position N-S  
 b. Head to N

**5. GRAVE TYPE**

a. Surface \_\_\_\_\_ c. Cist \_\_\_\_\_  
 b. Pit X d. Other \_\_\_\_\_  
 e. Shape Rectangular

**6. GRAVE DIMENSIONS**

a. Max. length 2m55cm Dir N-S  
 b. Max. width 1m03cm Dir E-W  
 c. Depth 1m51cm

**7. STRATIFICATION**

a. Inclusive \_\_\_\_\_ c. Precedent \_\_\_\_\_  
 b. Intrusive \_\_\_\_\_ d. Disturbed \_\_\_\_\_  
 e. \_\_\_\_\_

**8. ASSOCIATIONS**

a. Features Informal farm cemetery next to a mielie field and a wet marshy area.

b. Specimens Metal sheeting on top of the coffin.

**9. PRESERVATION**

a. Poor X Poor \_\_\_\_\_ Good \_\_\_\_\_

**10. COMPLETENESS**

0%

**16. SEX**

a. M \_\_\_\_\_ F X Indeterminate \_\_\_\_\_

**12. AGE**

a. Infant \_\_\_\_\_ d. Adult X?  
 b. Child \_\_\_\_\_ e. Mature X?  
 c. Adolescent \_\_\_\_\_ f. Senile \_\_\_\_\_

**13. NEG. NO.S** 2; 11; and 12

**14. REMARKS** Soil is very, very wet and clayish. The bones have totally disintegrated into a grey coloured clay like texture. The ground water from the nearby stream and marshy land is very high up and the coffin would have been under water most of the time, also depending on rainfall. This has played a large role in the bones disintegrating.

1. HEAD STONE a. Yes  b. No

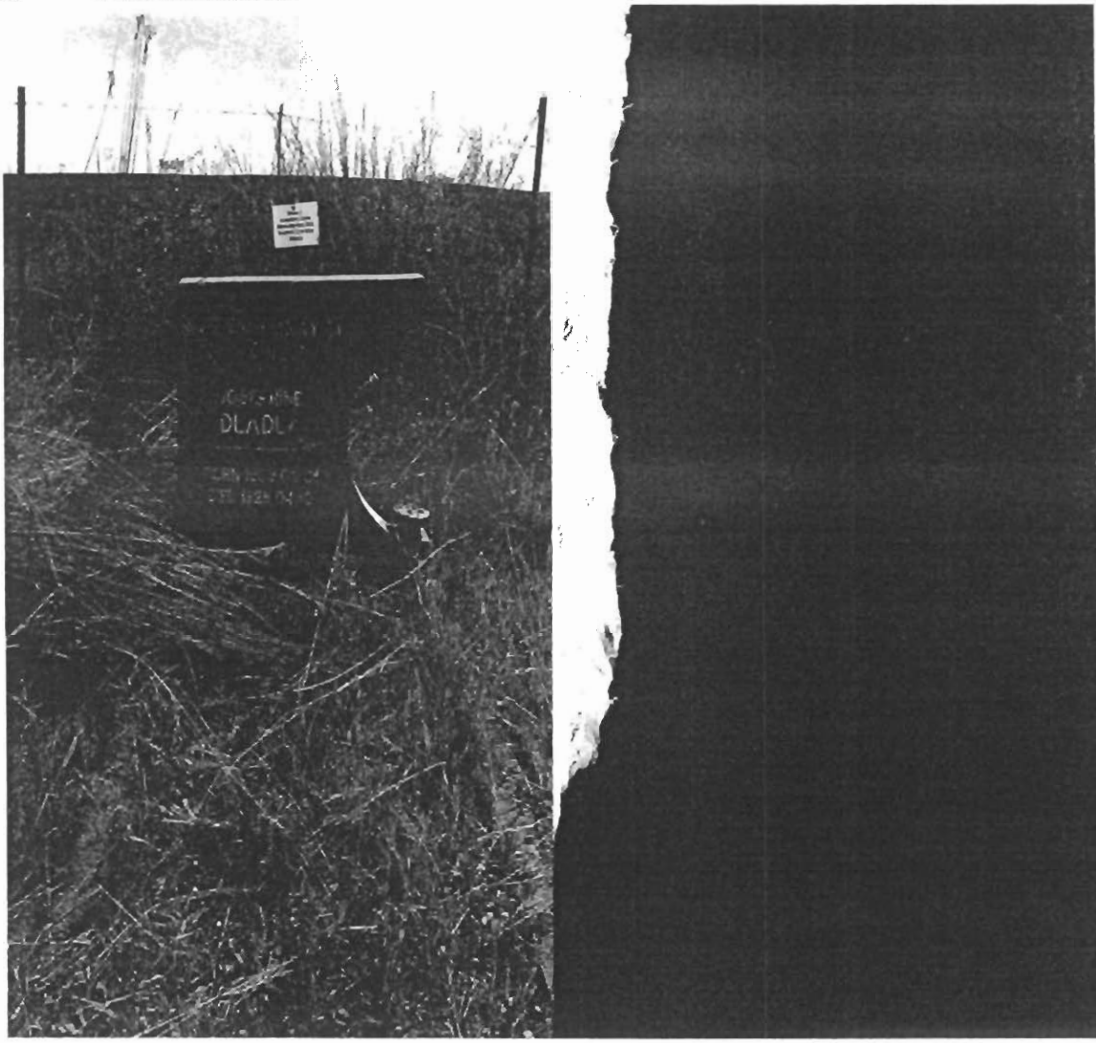
2. HEAD STONE DIMENSIONS  
a. Max length 66.5cm  
b. Max width 68.3cm  
c. Thickness 9.6cm

3. GRAVE PLOT DIMENSIONS  
a. Max length 2m35cm  
b. Max width 92cm  
c. Thickness 8.0cm

4. HEAD STONE INSCRIPTION  
a. IN LOVING MEMORY OF; OUR GRANNY; JOSEPHINE DLADLA; BORN  
1903.03.01; DIED 1928.04.10; REST IN PEACE.

5. HEAD STONE MATERIAL  
a. Granite

6. PHOTOGRAPHS





**NATIONAL CULTURAL HISTORY MUSEUM  
HUMAN REMAINS BURIAL FORMS**

Feature No. <u>3</u>	Site No. <u>A</u>
G.P.S <u>26°06'09.8"S 29°10'13.2"E</u>	Farm <u>Blesbokfontein</u>
Burial No. <u>3</u>	Province <u>Mpumulanga</u>
Reservoir <u>Donna Memorial Park</u>	Country <u>South Africa</u>

**1. LOCATION**

- a. Square \_\_\_\_\_  
 b. Horizontal \_\_\_\_\_  
 c. Depth from surface 1m60cm  
 d. Depth from datum \_\_\_\_\_

**2. BURIAL TYPE**

- a. Extended X d. Reburial \_\_\_\_\_  
 b. Flexed \_\_\_\_\_ e. Cremation \_\_\_\_\_  
 c. Semiflexed \_\_\_\_\_ f. Part crem \_\_\_\_\_  
 g. Other \_\_\_\_\_

**3. BURIAL DIMENSIONS**

- a. Max length 1m69cm Dir. N-S  
 b. Max width 62.5cm Dir. E-W  
 c. Thickness 24cm

**4. DEPOSITION**

- a. Position N-S  
 b. Head to N

**5. GRAVE TYPE**

- a. Surface \_\_\_\_\_ c. Cist \_\_\_\_\_  
 b. Pit X d. Other \_\_\_\_\_  
 e. Shape Rectangular

**6. GRAVE DIMENSIONS**

- a. Max. length 2m54cm Dir N-S  
 b. Max. width 92cm Dir E-W  
 c. Depth 1m36cm

**7. STRATIFICATION**

- a. Inclusive \_\_\_\_\_ c. Precedent \_\_\_\_\_  
 b. Intrusive \_\_\_\_\_ d. Disturbed \_\_\_\_\_  
 e. \_\_\_\_\_

**8. ASSOCIATIONS**

- a. Features Informal farm cemetery next to a mielie field and a wet marshy area.

- b. Specimens Metal sheeting on top of the coffin.

**9. PRESERVATION**

- a. Poor X Poor \_\_\_\_\_ Good \_\_\_\_\_

**10. COMPLETENESS**

- 0%

**12. SEX**

- a. M \_\_\_\_\_ F X Indeterminate \_\_\_\_\_

**12. AGE**

- a. Infant \_\_\_\_\_ d. Adult X  
 b. Child \_\_\_\_\_ e. Mature \_\_\_\_\_  
 c. Adolescent \_\_\_\_\_ f. Senile \_\_\_\_\_

**13. NEG. NO.S 3; 3; and 4**

- 14. REMARKS** Soil is very, very wet and clayish. The bones have totally disintegrated into a grey coloured clay like texture. The ground water from the nearby stream and marshy land is very high up and the coffin would have been under water most of the time, also depending on rainfall. This has played a large role in the bones disintegrating.

1. HEAD STONE a. Yes X b. No \_\_\_\_\_

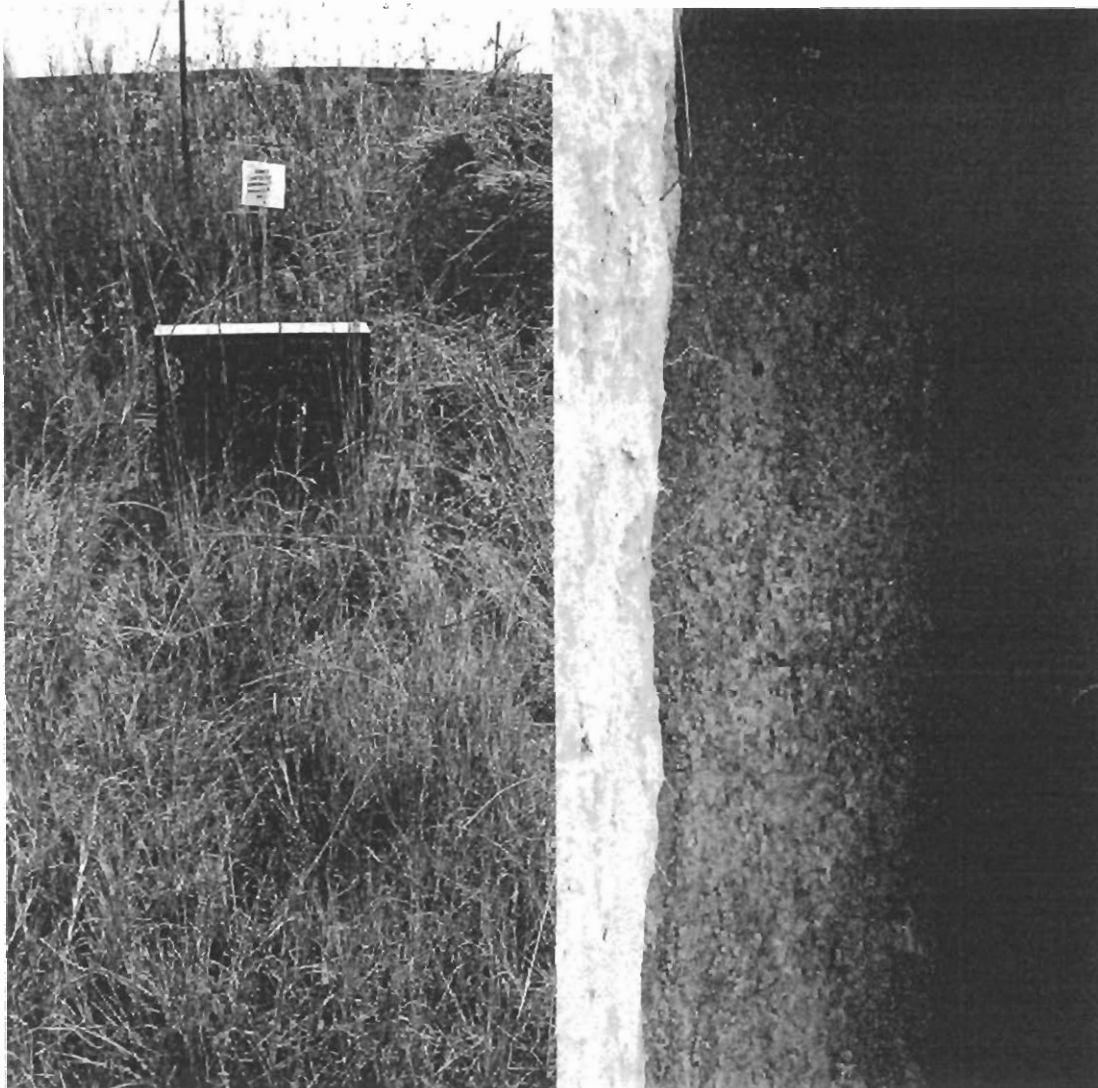
2. HEAD STONE DIMENSIONS  
a. Max length 44cm  
b. Max width 60.5cm  
c. Thickness 7.7cm

3. GRAVE PLOT DIMENSIONS  
a. Max length 2m50cm  
b. Max width 82cm  
c. Thickness 9.2cm

4. HEAD STONE INSCRIPTION  
a. LINA FESI DHLADLA; DIED 1927; R.I.P.; M.B.; NSIB  
\_\_\_\_\_  
\_\_\_\_\_  
\_\_\_\_\_

5. HEAD STONE MATERIAL  
a. Granite

6. PHOTOGRAPHS



**NATIONAL CULTURAL HISTORY MUSEUM  
HUMAN REMAINS BURIAL FORMS**

Feature No. <u>4</u>	Site No. <u>A</u>
G.P.S <u>26°06'09.8"S 29°10'13.2"E</u>	Farm <u>Blesbokfontein</u>
Burial No. <u>4</u>	Province <u>Mpumulanga</u>
Reservoir <u>Donna Memorial Park</u>	Country <u>South Africa</u>

**1. LOCATION**

a. Square \_\_\_\_\_  
 b. Horizontal \_\_\_\_\_  
 c. Depth from surface 1m60cm  
 d. Depth from datum \_\_\_\_\_

**2. BURIAL TYPE**

a. Extended X d. Reburial \_\_\_\_\_  
 b. Flexed \_\_\_\_\_ e. Cremation \_\_\_\_\_  
 c. Semiflexed \_\_\_\_\_ f. Part crem \_\_\_\_\_  
 g. Other \_\_\_\_\_

**3. BURIAL DIMENSIONS**

a. Max length 2m55cm Dir. N-S  
 b. Max width 73cm Dir. E-W  
 c. Thickness 1m 06cm

**4. DEPOSITION**

a. Position N-S  
 b. Head to N

**5. GRAVE TYPE**

a. Surface \_\_\_\_\_ c. Cist \_\_\_\_\_  
 b. Pit X d. Other \_\_\_\_\_  
 e. Shape Rectangular

**6. GRAVE DIMENSIONS**

a. Max. length 1m88cm Dir N-S  
 b. Max. width 64cm Dir E-W  
 c. Depth 23cm

**7. STRATIFICATION**

a. Inclusive \_\_\_\_\_ c. Precedent \_\_\_\_\_  
 b. Intrusive \_\_\_\_\_ d. Disturbed \_\_\_\_\_  
 e. \_\_\_\_\_

**8. ASSOCIATIONS**

a. Features Informal farm cemetery next to a mielie field and a wet marshy area.

b. Specimens Metal sheeting on top of the coffin.

**9. PRESERVATION**

a. Poor X Poor \_\_\_\_\_ Good \_\_\_\_\_

**10. COMPLETENESS**

0%

**18. SEX**

a. M X F \_\_\_\_\_ Indeterminate \_\_\_\_\_

**12. AGE**

a. Infant \_\_\_\_\_ d. Adult X?  
 b. Child \_\_\_\_\_ e. Mature X?  
 c. Adolescent \_\_\_\_\_ f. Senile \_\_\_\_\_

**13. NEG. NOS 4; 15; and 16**

**14. REMARKS** Soil is very, very wet and clayish. The bones have totally disintegrated into a grey coloured clay like texture. The ground water from the nearby stream and marshy land is very high up and the coffin would have been under water most of the time, also depending on rainfall. This has played a large role in the bones disintegrating.

1. HEAD STONE a. Yes X b. No \_\_\_\_\_

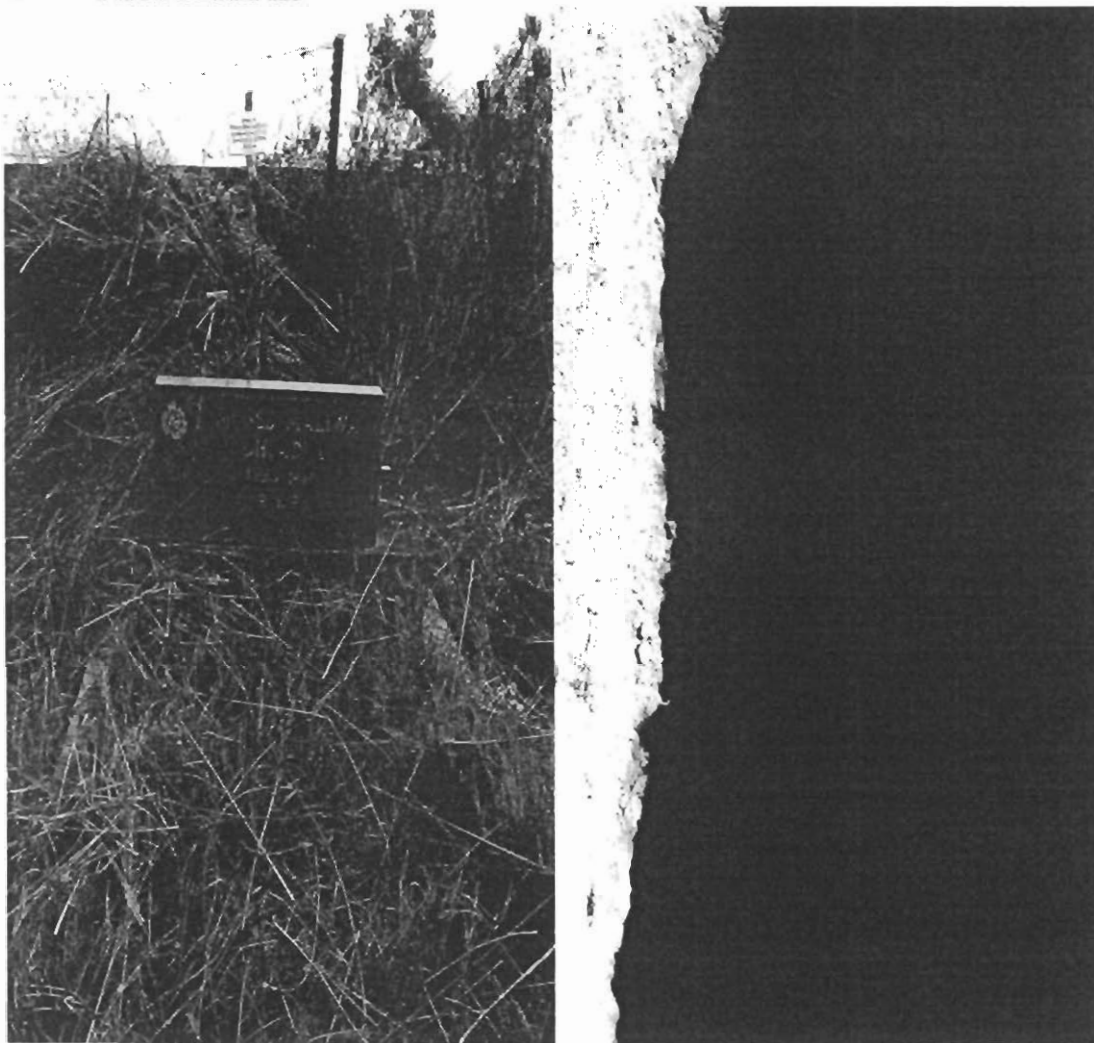
2. HEAD STONE DIMENSIONS  
a. Max length 44cm  
b. Max width 60.5cm  
c. Thickness 7.8cm

3. GRAVE PLOT DIMENSIONS  
a. Max length 2m51cm  
b. Max width 82.2cm  
c. Thickness 9.1cm

4. HEAD STONE INSCRIPTION  
a. MOSES MALIWA; DHLADLA; DIED 1939; R.I.P.; M.B.; NSIB.  
\_\_\_\_\_  
\_\_\_\_\_  
\_\_\_\_\_  
\_\_\_\_\_

5. HEAD STONE MATERIAL  
a. Granite

6. PHOTOGRAPHS



**NATIONAL CULTURAL HISTORY MUSEUM  
HUMAN REMAINS BURIAL FORMS**

Feature No. <u>5</u>	Site No. <u>A</u>
G.P.S <u>26°06'09.8"S 29°10'13.2"E</u>	Farm <u>Blesbokfontein</u>
Burial No. <u>5</u>	Province <u>Mpumulanga</u>
Reservoir <u>Donna Memorial Park</u>	Country <u>South Africa</u>

**1. LOCATION**

a. Square \_\_\_\_\_  
 b. Horizontal \_\_\_\_\_  
 c. Depth from surface 1m80cm  
 d. Depth from datum \_\_\_\_\_

**2. BURIAL TYPE**

a. Extended X d. Reburial \_\_\_\_\_  
 b. Flexed \_\_\_\_\_ e. Cremation \_\_\_\_\_  
 c. Semiflexed \_\_\_\_\_ f. Part crem \_\_\_\_\_  
 g. Other \_\_\_\_\_

**3. BURIAL DIMENSIONS**

a. Max length 2m09cm Dir. N-S  
 b. Max width 76cm Dir. E-W  
 c. Thickness 33cm

**4. DEPOSITION**

a. Position N-S  
 b. Head to N

**5. GRAVE TYPE**

a. Surface \_\_\_\_\_ c. Cist \_\_\_\_\_  
 b. Pit X d. Other \_\_\_\_\_  
 e. Shape Rectangular

**6. GRAVE DIMENSIONS**

a. Max. length 2m49cm Dir N-S  
 b. Max. width 1m17cm Dir E-W  
 c. Depth 47cm

**7. STRATIFICATION**

a. Inclusive \_\_\_\_\_ c. Precedent \_\_\_\_\_  
 b. Intrusive \_\_\_\_\_ d. Disturbed \_\_\_\_\_  
 e. \_\_\_\_\_

**8. ASSOCIATIONS**

a. Features Informal farm cemetery next to a mielie field and a wet marshy area.

b. Specimens Coffin wood and very corroded pieces of corrugated iron sheeting.

**9. PRESERVATION**

a. Poor X Poor \_\_\_\_\_ Good \_\_\_\_\_

**10. COMPLETENESS**

0%

**14. SEX**

a. M \_\_\_\_\_ F X Indeterminate \_\_\_\_\_

**12. AGE**

a. Infant \_\_\_\_\_ d. Adult X  
 b. Child \_\_\_\_\_ e. Mature \_\_\_\_\_  
 c. Adolescent \_\_\_\_\_ f. Senile \_\_\_\_\_

**13. ]NEG. NO.S 5; 7; and 8**

**14. REMARKS** Soil is very, very wet and clayish. The bones have totally disintegrated into a grey coloured clay like texture. The ground water from the nearby stream and marshy land is very high up and the coffin would have been under water most of the time, also depending on rainfall. This has played a large role in the bones disintegrating.

1. HEAD STONE a. Yes X b. No \_\_\_\_\_

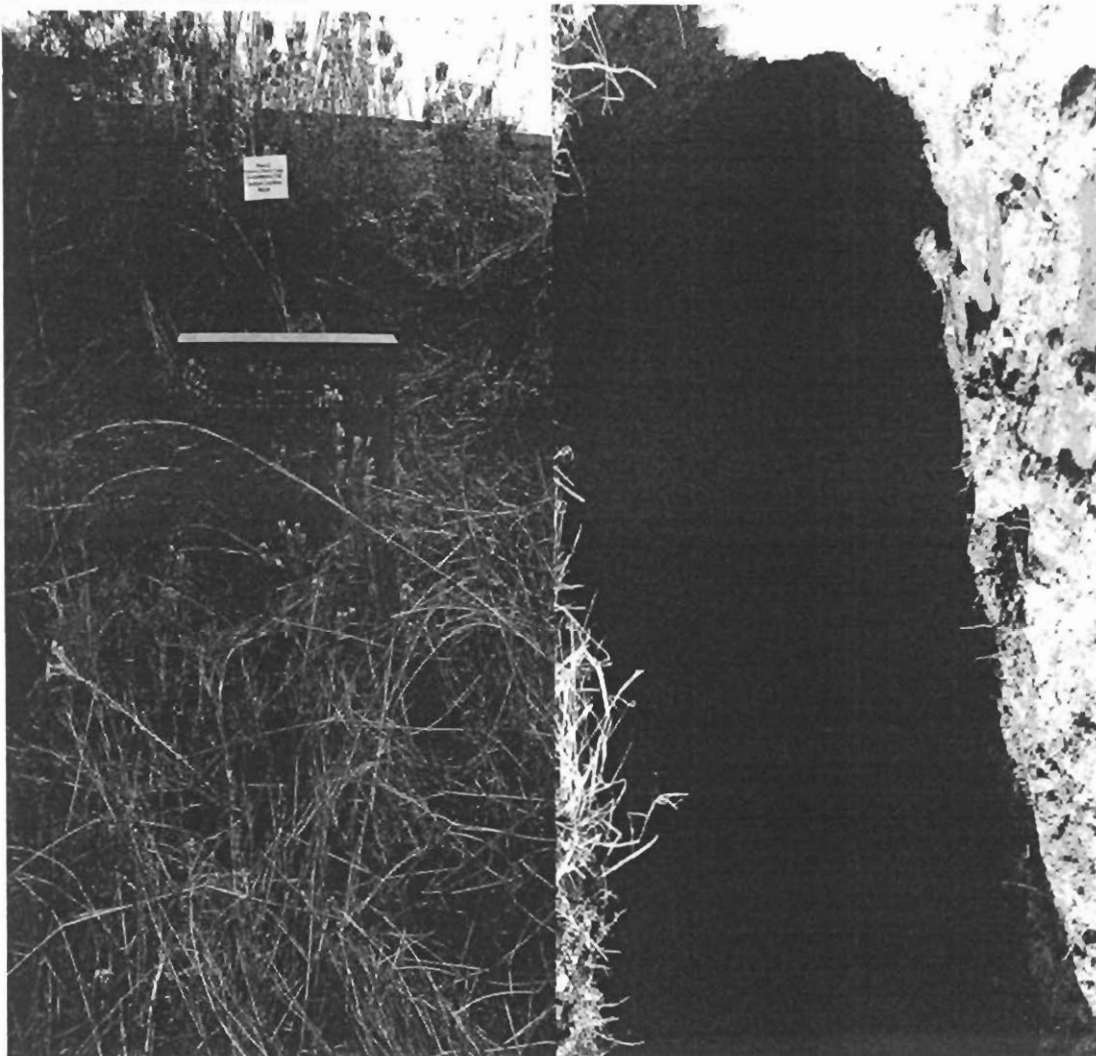
2. HEAD STONE DIMENSIONS  
a. Max length 44cm  
b. Max width 60.6cm  
c. Thickness 7.7cm

3. GRAVE PLOT DIMENSIONS  
a. Max length 2m49cm  
b. Max width 82cm  
c. Thickness 9.2cm

4. HEAD STONE INSCRIPTION  
a. KHALELWAYO; ELIZABETH DHLADLA; DIED 1930; R.I.P.; M.B.; NSIB.  
\_\_\_\_\_  
\_\_\_\_\_  
\_\_\_\_\_  
\_\_\_\_\_

5. HEAD STONE MATERIAL  
a. Granite

6. PHOTOGRAPHS



**NATIONAL CULTURAL HISTORY MUSEUM  
HUMAN REMAINS BURIAL FORMS**

Feature No. <u>6</u>	Site No. <u>A</u>
G.P.S <u>26°06'09.8"S 29°10'13.2"E</u>	Farm <u>Blesbokfontein</u>
Burial No. <u>6</u>	Province <u>Mpumulanga</u>
Reservoir <u>Donna Memorial Park</u>	Country <u>South Africa</u>

**1. LOCATION**

a. Square \_\_\_\_\_  
 b. Horizontal \_\_\_\_\_  
 c. Depth from surface 1m56cm  
 d. Depth from datum \_\_\_\_\_

**2. BURIAL TYPE**

a. Extended X d. Reburial \_\_\_\_\_  
 b. Flexed \_\_\_\_\_ e. Cremation \_\_\_\_\_  
 c. Semiflexed \_\_\_\_\_ f. Part crem \_\_\_\_\_  
 g. Other \_\_\_\_\_

**3. BURIAL DIMENSIONS**

a. Max length 1m58cm Dir. N-S  
 b. Max width 67cm Dir. E-W  
 c. Thickness 46cm

**4. DEPOSITION**

a. Position N-S  
 b. Head to N

**5. GRAVE TYPE**

a. Surface \_\_\_\_\_ c. Cist \_\_\_\_\_  
 b. Pit X d. Other \_\_\_\_\_  
 e. Shape Rectangular

**6. GRAVE DIMENSIONS**

a. Max. length 1m99cm Dir N-S  
 b. Max. width 90cm Dir E-W  
 c. Depth 1m10cm

**7. STRATIFICATION**

a. Inclusive \_\_\_\_\_ c. Precedent \_\_\_\_\_  
 b. Intrusive \_\_\_\_\_ d. Disturbed \_\_\_\_\_  
 e. \_\_\_\_\_

**8. ASSOCIATIONS**

a. Features Informal farm cemetery next to a mielie field and a wet marshy area.

b. Specimens Metal sheeting on top of the coffin, very corroded and coffin wood.

**9. PRESERVATION**

a. Poor X Poor \_\_\_\_\_ Good \_\_\_\_\_

**10. COMPLETENESS**

0%

**27. SEX**

a. M X F \_\_\_\_\_ Indeterminate \_\_\_\_\_

**12. AGE**

a. Infant \_\_\_\_\_ d. Adult X  
 b. Child \_\_\_\_\_ e. Mature \_\_\_\_\_  
 c. Adolescent \_\_\_\_\_ f. Senile \_\_\_\_\_

**13. NEG. NO.S 6; 45; and 46**

**14. REMARKS** Soil is very, very wet and clayish. The bones have totally disintegrated into a grey coloured clay like texture. The ground water from the nearby stream and marshy land is very high up and the coffin would have been under water most of the time, also depending on rainfall. This has played a large role in the bones disintegrating.



1. HEAD STONE a. Yes X b. No \_\_\_\_\_

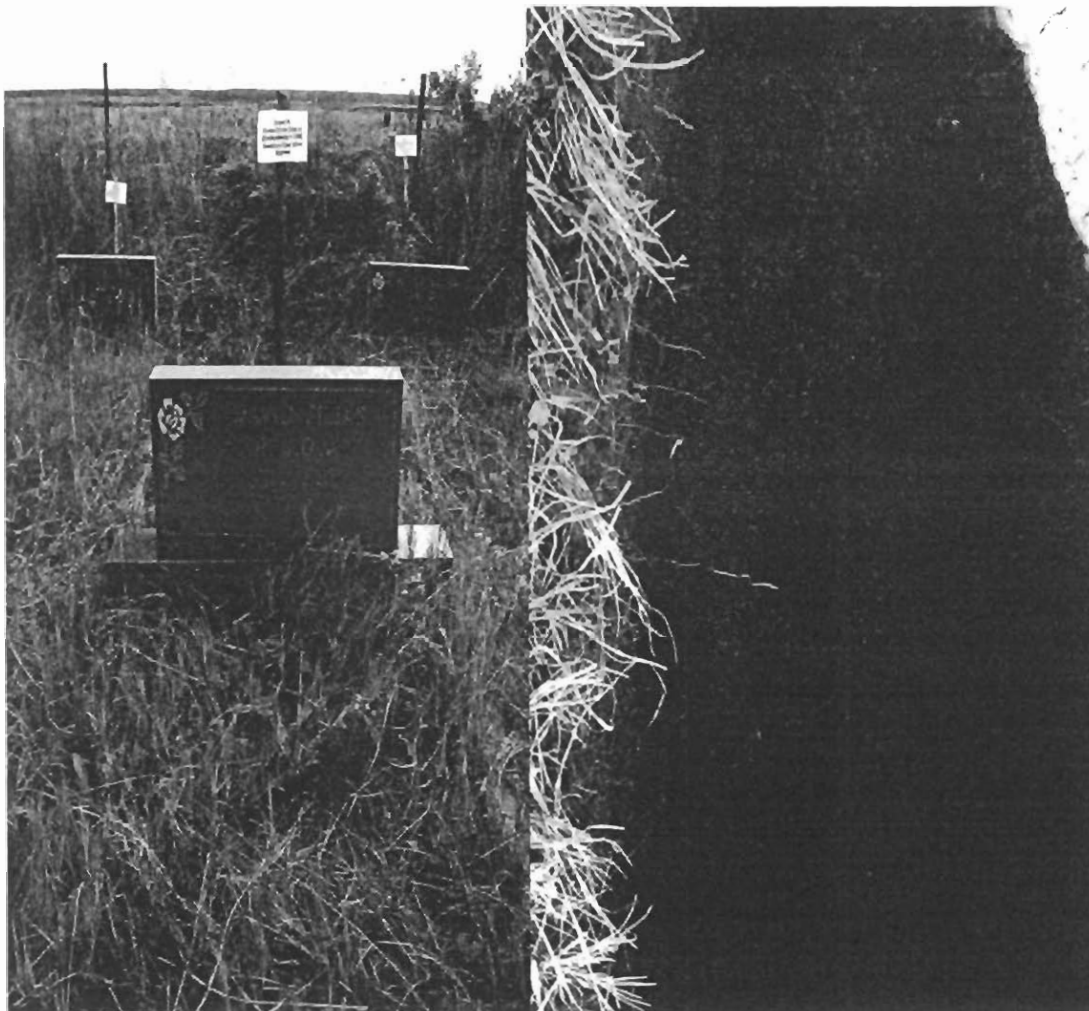
2. HEAD STONE DIMENSIONS  
a. Max length 44.2cm  
b. Max width 60.5cm  
c. Thickness 7.8cm

3. GRAVE PLOT DIMENSIONS  
a. Max length 2m50cm  
b. Max width 82cm  
c. Thickness 9cm

4. HEAD STONE INSCRIPTION  
a. DAVID SILIAS; DHLADLA; DIED 1920; R.I.P.; M.B.; NSIB.  
\_\_\_\_\_  
\_\_\_\_\_  
\_\_\_\_\_  
\_\_\_\_\_

5. HEAD STONE MATERIAL  
a. Granites

6. PHOTOGRAPHS





**NATIONAL CULTURAL HISTORY MUSEUM  
HUMAN REMAINS BURIAL FORMS**

Feature No. <u>7</u>	Site No. <u>A</u>
G.P.S <u>26°06'09.8"S 29°10'13.2"E</u>	Farm <u>Blesbokfontein</u>
Burial No. <u>7</u>	Province <u>Mpumulanga</u>
Reservoir <u>Donna Memorial Park</u>	Country <u>South Africa</u>

**1. LOCATION**

a. Square \_\_\_\_\_  
 b. Horizontal \_\_\_\_\_  
 c. Depth from surface 1m63cm  
 d. Depth from datum \_\_\_\_\_

**2. BURIAL TYPE**

a. Extended X d. Reburial \_\_\_\_\_  
 b. Flexed \_\_\_\_\_ e. Cremation \_\_\_\_\_  
 c. Semiflexed \_\_\_\_\_ f. Part crem \_\_\_\_\_  
 g. Other \_\_\_\_\_

**3. BURIAL DIMENSIONS**

a. Max length 2m20cm Dir. N-S  
 b. Max width 83cm Dir. E-W  
 c. Thickness 22cm

**4. DEPOSITION**

a. Position N-S  
 b. Head to N

**5. GRAVE TYPE**

a. Surface \_\_\_\_\_ c. Cist \_\_\_\_\_  
 b. Pit X d. Other \_\_\_\_\_  
 e. Shape Rectangular

**6. GRAVE DIMENSIONS**

a. Max. length 1m86cm Dir N-S  
 b. Max. width 78cm Dir E-W  
 c. Depth 1m41cm

**7. STRATIFICATION**

a. Inclusive \_\_\_\_\_ c. Precedent \_\_\_\_\_  
 b. Intrusive \_\_\_\_\_ d. Disturbed \_\_\_\_\_  
 e. \_\_\_\_\_

**8. ASSOCIATIONS**

a. Features Informal farm cemetery next to a mielie field and a wet marshy area.

b. Specimens A chicken bone and a silver shilling found on top of the grave.

**9. PRESERVATION**

a. Poor X Poor \_\_\_\_\_ Good \_\_\_\_\_

**10. COMPLETENESS**

0%

**19. SEX**

a. M \_\_\_\_\_ F X Indeterminate \_\_\_\_\_

**12. AGE**

a. Infant \_\_\_\_\_ d. Adult X?  
 b. Child \_\_\_\_\_ e. Mature X?  
 c. Adolescent \_\_\_\_\_ f. Senile \_\_\_\_\_

**13. NEG. NO.S 7; 23; and 24**

**14. REMARKS** Soil is very, very wet and clayish. The bones have totally disintegrated into a grey coloured clay like texture. The ground water from the nearby stream and marshy land is very high up and the coffin would have been under water most of the time, also depending on rainfall. This has played a large role in the bones disintegrating.

1. HEAD STONE a. Yes X b. No \_\_\_\_\_

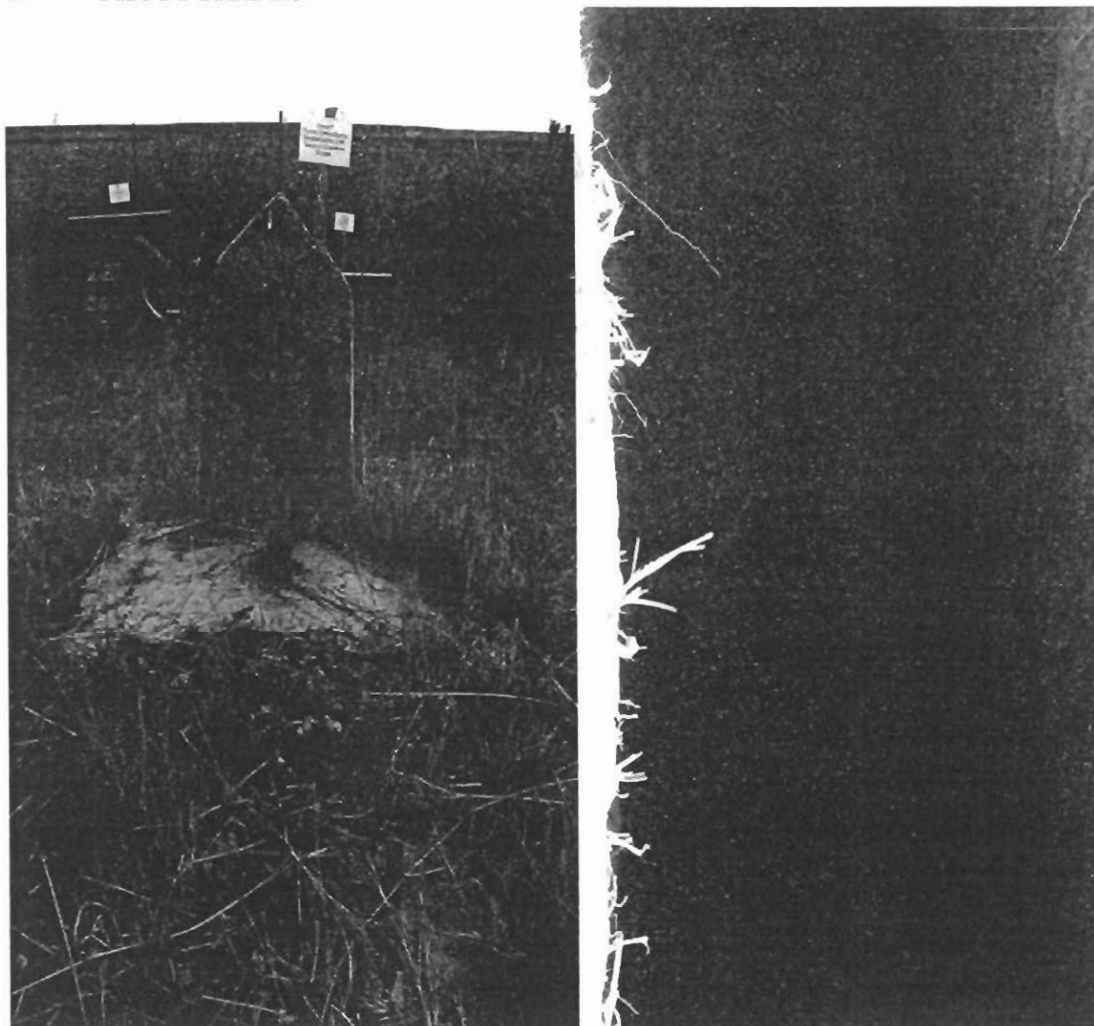
2. HEAD STONE DIMENSIONS  
a. Max length 59cm  
b. Max width 35cm  
c. Thickness 8cm

3. GRAVE PLOT DIMENSIONS  
a. Max length 2m50cm  
b. Max width 86cm  
c. Thickness 8cm

4. HEAD STONE INSCRIPTION  
a. No inscription is visible on the head stone. The grave has been identified as THEMBI SANNA DLADLA.  
\_\_\_\_\_  
\_\_\_\_\_  
\_\_\_\_\_  
\_\_\_\_\_

5. HEAD STONE MATERIAL  
a. Home made concrete and stone

6. PHOTOGRAPHS





1. HEAD STONE a. Yes X b. No \_\_\_\_\_

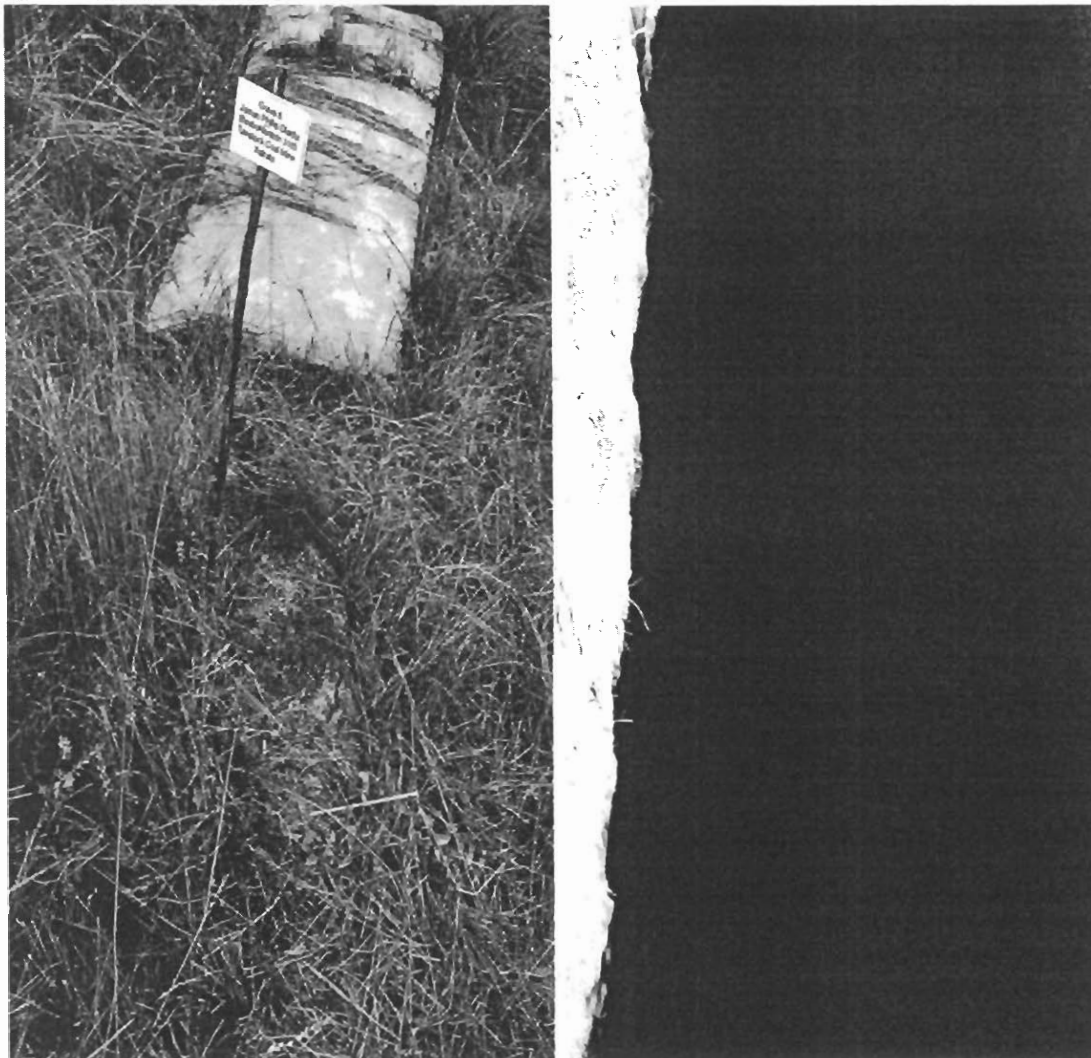
2. HEAD STONE DIMENSIONS  
a. Max length 1m05cm  
b. Max width 30.9cm  
c. Thickness 6cm

3. GRAVE PLOT DIMENSIONS  
a. Max length Difficult to determine as only a  
b. Max width headstone can be seen.  
c. Thickness \_\_\_\_\_

4. HEAD STONE INSCRIPTION  
a. Head stone difficult to read. JAMAO; LADHLA....  
Identified as JAMAO PHILLIP DLADLA  
\_\_\_\_\_  
\_\_\_\_\_  
\_\_\_\_\_

5. HEAD STONE MATERIAL  
a. Home made concrete

6. PHOTOGRAPHS



**NATIONAL CULTURAL HISTORY MUSEUM  
HUMAN REMAINS BURIAL FORMS**

Feature No. <u>9</u>	Site No. <u>A</u>
G.P.S <u>26°06'09.8"S 29°10'13.2"E</u>	Farm <u>Blesbokfontein</u>
Burial No. <u>9</u>	Province <u>Mpumulanga</u>
Reservoir <u>Donna Memorial Park</u>	Country <u>South Africa</u>

**1. LOCATION**

a. Square \_\_\_\_\_  
 b. Horizontal \_\_\_\_\_  
 c. Depth from surface 1m56cm  
 d. Depth from datum \_\_\_\_\_

**2. BURIAL TYPE**

a. Extended X d. Reburial \_\_\_\_\_  
 b. Flexed \_\_\_\_\_ e. Cremation \_\_\_\_\_  
 c. Semiflexed \_\_\_\_\_ f. Part crem \_\_\_\_\_  
 g. Other \_\_\_\_\_

**3. BURIAL DIMENSIONS**

a. Max length 1m66cm Dir. N-S  
 b. Max width 53cm Dir. E-W  
 c. Thickness 24cm

**4. DEPOSITION**

a. Position N-S  
 b. Head to N

**5. GRAVE TYPE**

a. Surface \_\_\_\_\_ c. Cist \_\_\_\_\_  
 b. Pit X d. Other \_\_\_\_\_  
 e. Shape Rectangular

**6. GRAVE DIMENSIONS**

a. Max. length 2m11cm Dir N-S  
 b. Max. width 77cm Dir E-W  
 c. Depth 1m32cm

**7. STRATIFICATION**

a. Inclusive \_\_\_\_\_ c. Precedent \_\_\_\_\_  
 b. Intrusive \_\_\_\_\_ d. Disturbed \_\_\_\_\_  
 e. \_\_\_\_\_

**8. ASSOCIATIONS**

a. Features Informal farm cemetery next to a mielie field and a wet marshy area.

\_\_\_\_\_  
 \_\_\_\_\_  
 \_\_\_\_\_  
 \_\_\_\_\_  
 \_\_\_\_\_  
 \_\_\_\_\_  
 \_\_\_\_\_  
 \_\_\_\_\_  
 \_\_\_\_\_  
 \_\_\_\_\_

**9. PRESERVATION**

a. Poor X Poor \_\_\_\_\_ Good \_\_\_\_\_

**10. COMPLETENESS**

0%

**20. SEX**

a. M \_\_\_\_\_ F \_\_\_\_\_ Indeterminate X

**12. AGE**

a. Infant \_\_\_\_\_ d. Adult X?  
 b. Child \_\_\_\_\_ e. Mature X?  
 c. Adolescent \_\_\_\_\_ f. Senile \_\_\_\_\_

**13. NEG. NO.S 9; 25; and 26**

**14. REMARKS** Soil is very, very wet and clayish. The bones have totally disintegrated into a grey coloured clay like texture. The ground water from the nearby stream and marshy land is very high up and the coffin would have been under water most of the time, also depending on rainfall. This has played a large role in the bones disintegrating.

\_\_\_\_\_  
 \_\_\_\_\_  
 \_\_\_\_\_  
 \_\_\_\_\_  
 \_\_\_\_\_  
 \_\_\_\_\_  
 \_\_\_\_\_  
 \_\_\_\_\_

1. HEAD STONE a. Yes \_\_\_\_\_ b. No X

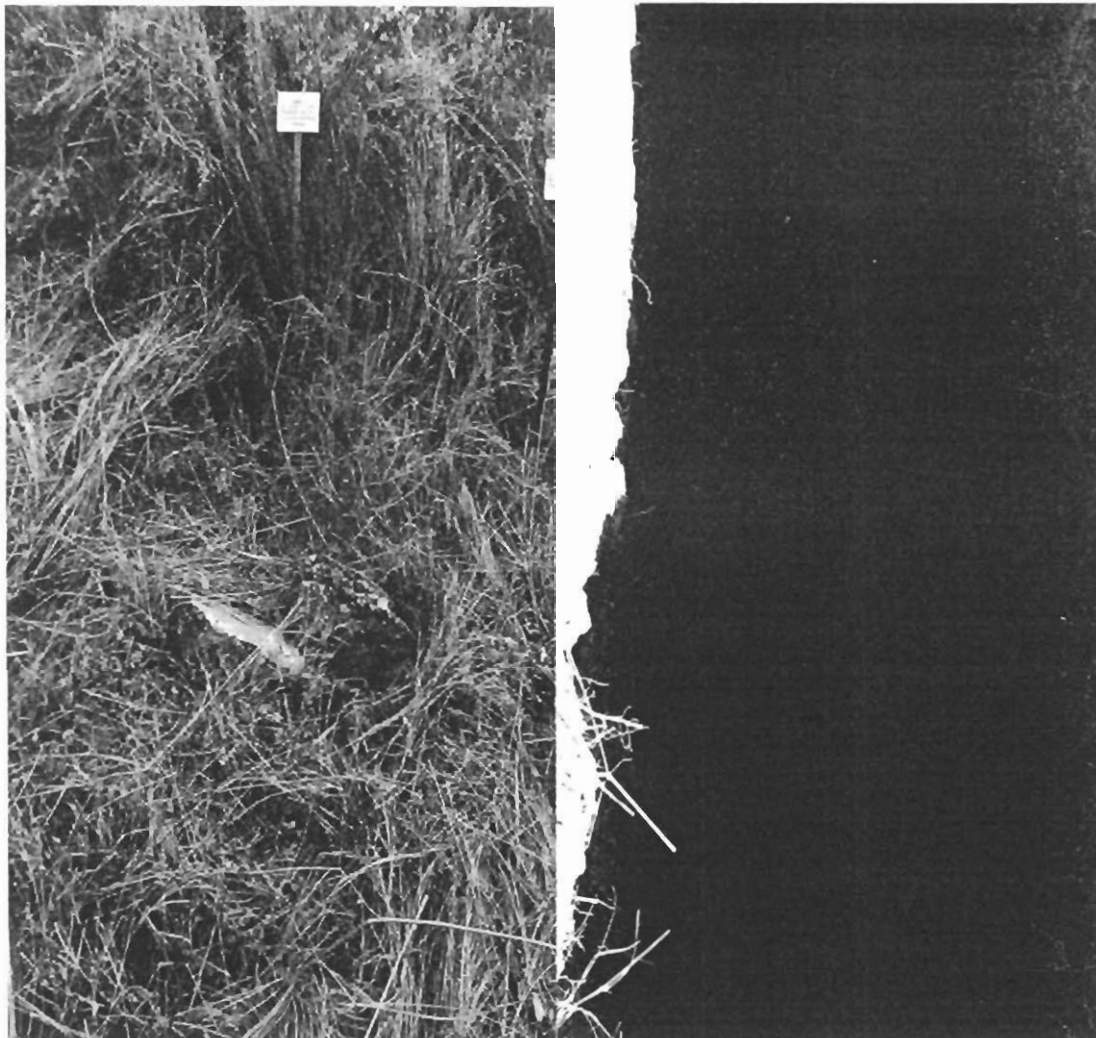
2. HEAD STONE DIMENSIONS  
a. Max length \_\_\_\_\_ -  
b. Max width \_\_\_\_\_ -  
c. Thickness \_\_\_\_\_ -

3. GRAVE PLOT DIMENSIONS  
a. Max length 1m52cm  
b. Max width 96cm  
c. Thickness \_\_\_\_\_ -

4. HEAD STONE INSCRIPTION  
a. No headstone. Rocks covered the grave. This grave is of an unknown person.  
\_\_\_\_\_  
\_\_\_\_\_  
\_\_\_\_\_  
\_\_\_\_\_

5. HEAD STONE MATERIAL  
a. -

6. PHOTOGRAPHS







1. HEAD STONE a. Yes \_\_\_\_\_ b. No X

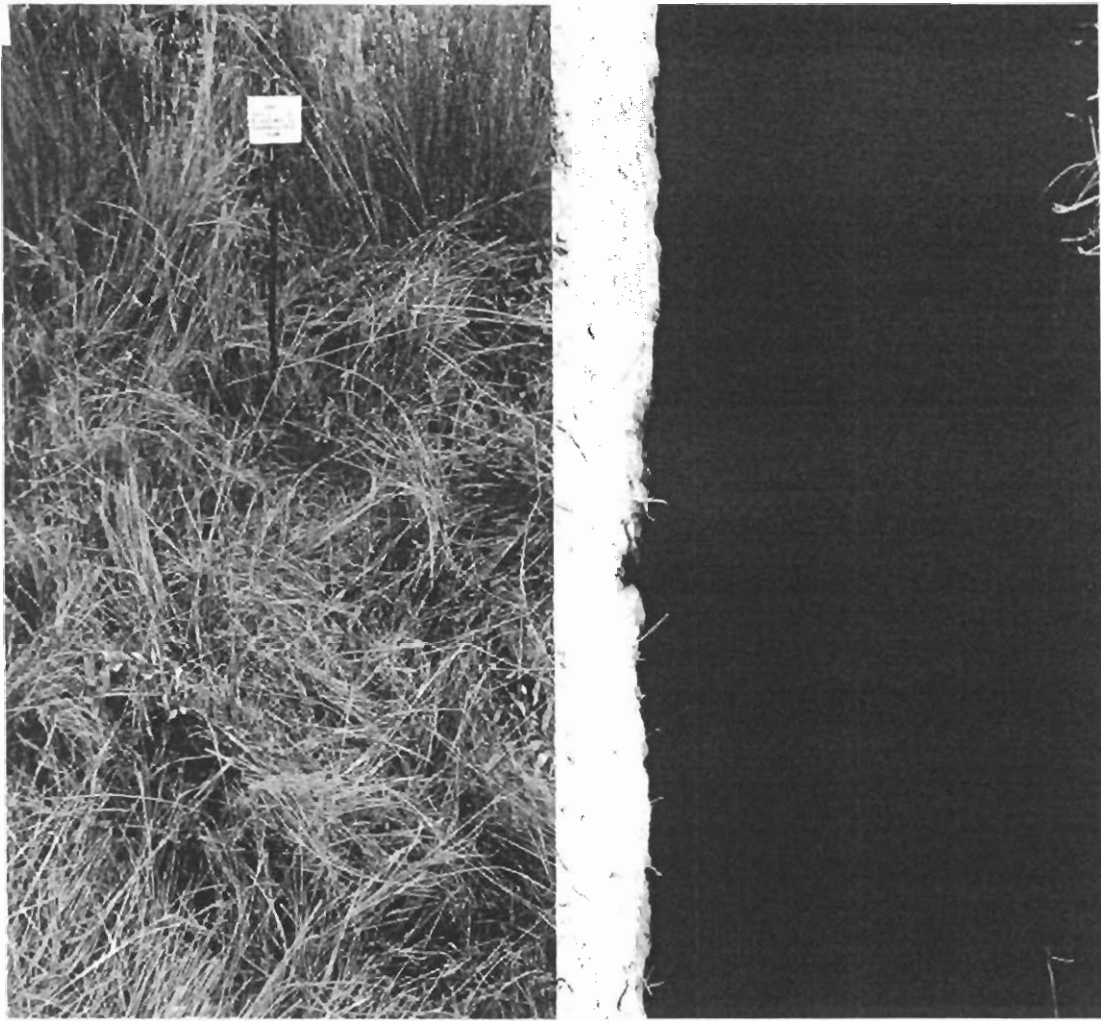
2. HEAD STONE DIMENSIONS  
a. Max length \_\_\_\_\_ -  
b. Max width \_\_\_\_\_ -  
c. Thickness \_\_\_\_\_ -

3. GRAVE PLOT DIMENSIONS  
a. Max length \_\_\_\_\_ 1m10cm  
b. Max width \_\_\_\_\_ 59cm  
c. Thickness \_\_\_\_\_ -

4. HEAD STONE INSCRIPTION  
a. Stones marked the grave. This could have been the grave of a child.  
\_\_\_\_\_  
\_\_\_\_\_  
\_\_\_\_\_  
\_\_\_\_\_  
\_\_\_\_\_

5. HEAD STONE MATERIAL  
a. \_\_\_\_\_ -

6. PHOTOGRAPHS







1. HEAD STONE a. Yes \_\_\_\_\_ b. No X

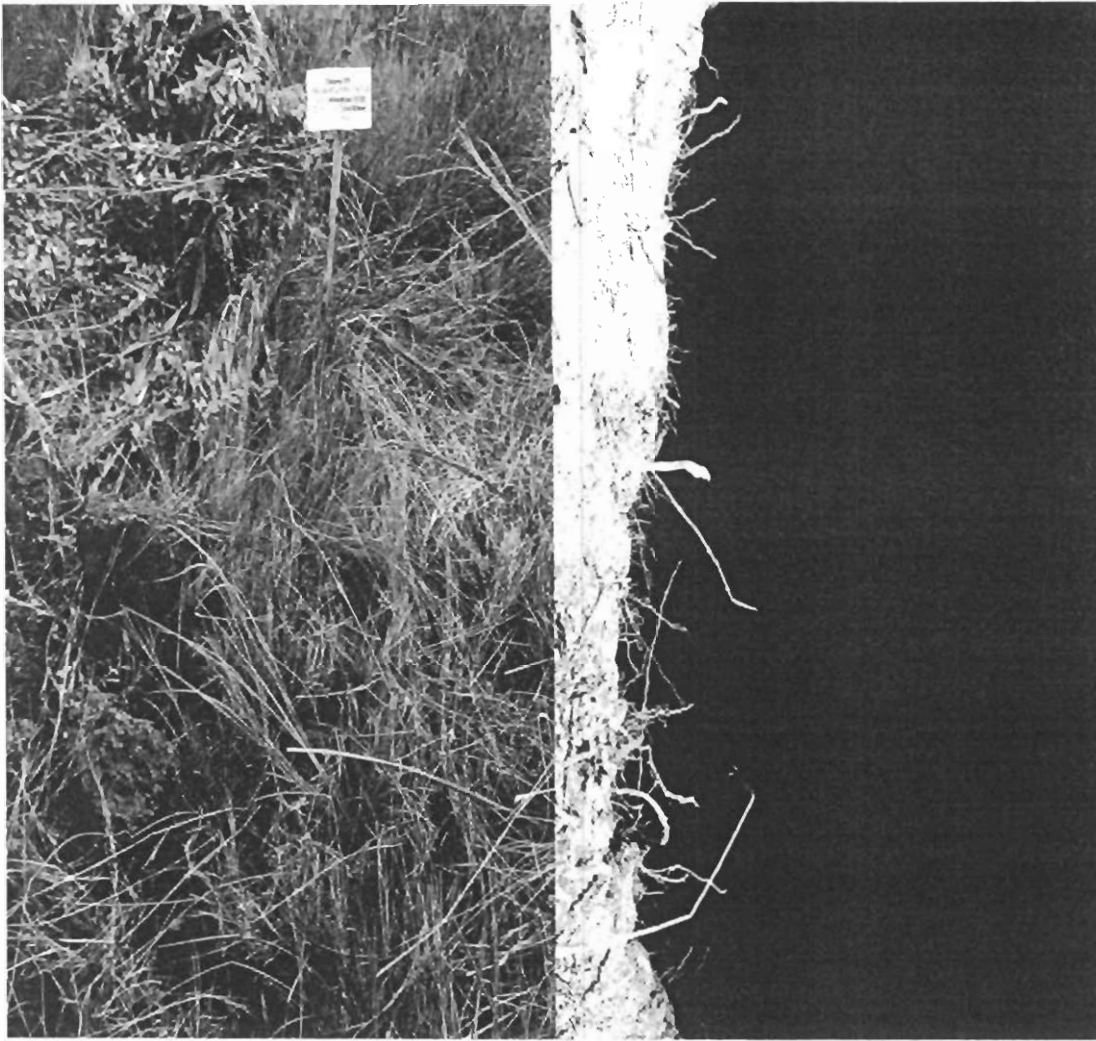
2. HEAD STONE DIMENSIONS  
a. Max length \_\_\_\_\_ -  
b. Max width \_\_\_\_\_ -  
c. Thickness \_\_\_\_\_ -

3. GRAVE PLOT DIMENSIONS  
a. Max length 1m20cm  
b. Max width 94cm  
c. Thickness 10cm

4. HEAD STONE INSCRIPTION  
a. No headstone can be seen. Stones marked the grave of this unknown person.  
\_\_\_\_\_  
\_\_\_\_\_  
\_\_\_\_\_  
\_\_\_\_\_

5. HEAD STONE MATERIAL  
a. \_\_\_\_\_ - \_\_\_\_\_

6. PHOTOGRAPHS



**NATIONAL CULTURAL HISTORY MUSEUM  
HUMAN REMAINS BURIAL FORMS**

Feature No. <u>12</u>	Site No. <u>A</u>
G.P.S <u>26°06'09.8"S 29°10'13.2"E</u>	Farm <u>Blesbokfontein</u>
Burial No. <u>12</u>	Province <u>Mpumulanga</u>
Reservoir <u>Donna Memorial Park</u>	Country <u>South Africa</u>

**1. LOCATION**  
a. Square \_\_\_\_\_  
b. Horizontal \_\_\_\_\_  
c. Depth from surface 1m65cm  
d. Depth from datum \_\_\_\_\_

**2. BURIAL TYPE**  
a. Extended X d. Reburial \_\_\_\_\_  
b. Flexed \_\_\_\_\_ e. Cremation \_\_\_\_\_  
c. Semiflexed \_\_\_\_\_ f. Part crem \_\_\_\_\_  
g. Other \_\_\_\_\_

**3. BURIAL DIMENSIONS**  
a. Max length 1m08cm Dir. N-S  
b. Max width 58cm Dir. E-W  
c. Thickness - \_\_\_\_\_

**4. DEPOSITION**  
a. Position N-S  
b. Head to N

**5. GRAVE TYPE**  
a. Surface \_\_\_\_\_ c. Cist \_\_\_\_\_  
b. Pit X d. Other \_\_\_\_\_  
e. Shape Rectangular

**6. GRAVE DIMENSIONS**  
a. Max. length 1m88cm Dir N-S  
b. Max. width 85cm Dir E-W  
c. Depth 1m65cm

**7. STRATIFICATION**  
a. Inclusive \_\_\_\_\_ c. Precedent \_\_\_\_\_  
b. Intrusive \_\_\_\_\_ d. Disturbed \_\_\_\_\_  
e. \_\_\_\_\_

**8. ASSOCIATIONS**  
a. Features Informal farm cemetery next to a mielie field and a wet marshy area.

b. Specimens There is no indication of a coffin.

**9. PRESERVATION**  
a. Poor X Poor \_\_\_\_\_ Good \_\_\_\_\_

**10. COMPLETENESS**  
0%

**13. SEX**  
a. M \_\_\_\_\_ F \_\_\_\_\_ Indeterminate X

**12. AGE**  
a. Infant X ? d. Adult \_\_\_\_\_  
b. Child X ? e. Mature \_\_\_\_\_  
c. Adolescent \_\_\_\_\_ f. Senile \_\_\_\_\_

**13. NEG. NO.S** 12; 5; and 6

**14. REMARKS** Soil is very, very wet and clayish. The bones have totally disintegrated into a grey coloured clay like texture. The ground water from the nearby stream and marshy land is very high up and the coffin would have been under water most of the time, also depending on rainfall. This has played a large role in the bones disintegrating. This seems to be a grave of a child or infant. Age Unknown.

1. HEAD STONE a. Yes \_\_\_\_\_ b. No X

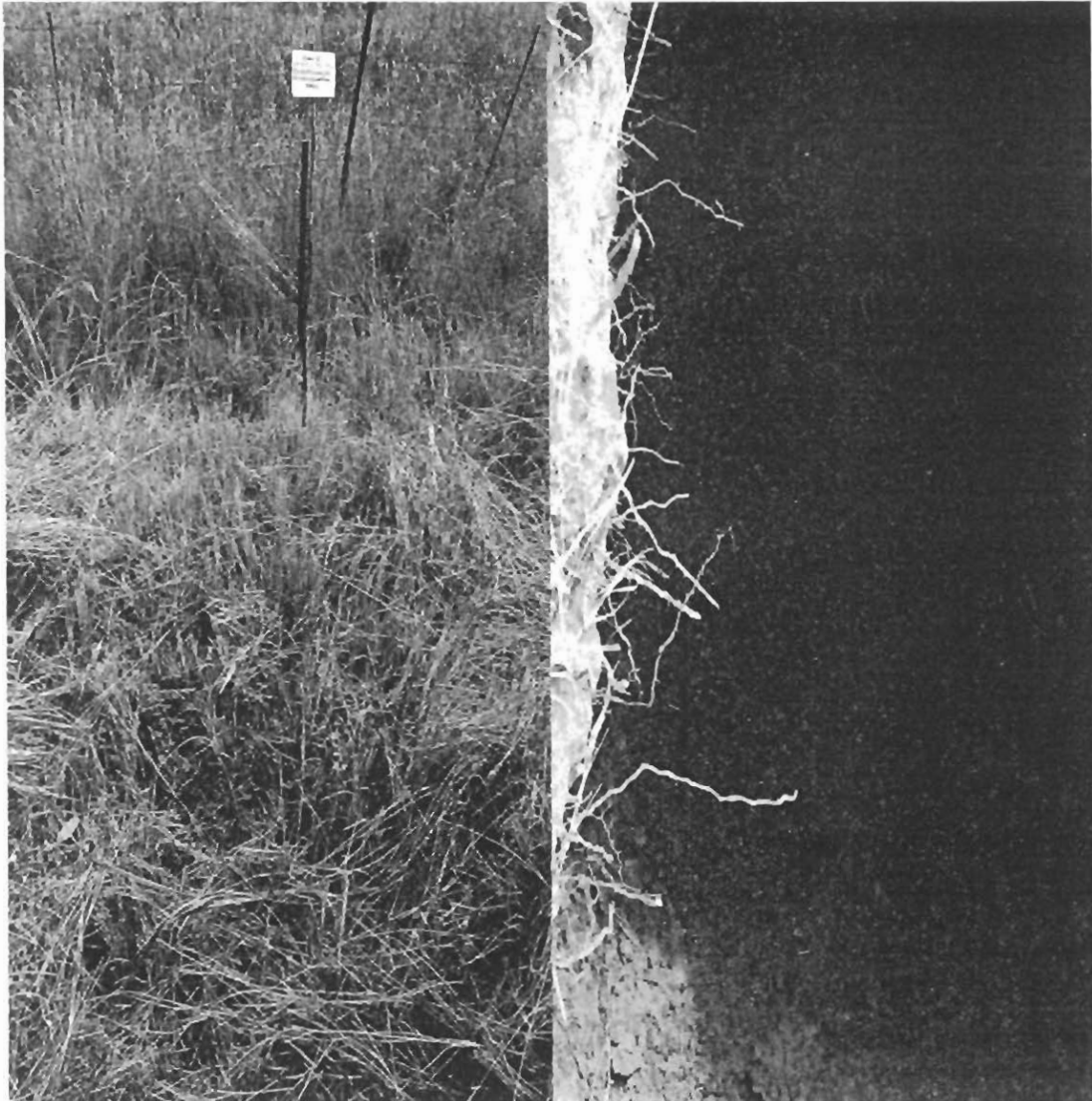
2. HEAD STONE DIMENSIONS  
a. Max length \_\_\_\_\_  
b. Max width \_\_\_\_\_  
c. Thickness \_\_\_\_\_

3. GRAVE PLOT DIMENSIONS  
a. Max length 1m30cm  
b. Max width 1m40cm  
c. Thickness 17cm

4. HEAD STONE INSCRIPTION  
a. Stones marked the grave, the grave seemed to be in a rounded shape.  
\_\_\_\_\_  
\_\_\_\_\_  
\_\_\_\_\_

5. HEAD STONE MATERIAL  
a. \_\_\_\_\_

6. PHOTOGRAPHS





1. HEAD STONE a. Yes \_\_\_\_\_ b. No X

2. HEAD STONE DIMENSIONS  
a. Max length \_\_\_\_\_ - \_\_\_\_\_  
b. Max width \_\_\_\_\_ - \_\_\_\_\_  
c. Thickness \_\_\_\_\_ - \_\_\_\_\_

3. GRAVE PLOT DIMENSIONS  
a. Max length \_\_\_\_\_ - \_\_\_\_\_  
b. Max width \_\_\_\_\_ - \_\_\_\_\_  
c. Thickness \_\_\_\_\_ - \_\_\_\_\_

4. HEAD STONE INSCRIPTION  
a. No headstone was found. This grave is in the space between grave 25 and 30. This is a grave of an unknown person.  
\_\_\_\_\_  
\_\_\_\_\_  
\_\_\_\_\_

5. HEAD STONE MATERIAL  
a. \_\_\_\_\_ - \_\_\_\_\_

6. PHOTOGRAPHS



**NATIONAL CULTURAL HISTORY MUSEUM  
HUMAN REMAINS BURIAL FORMS**

Feature No. <u>14</u>	Site No. <u>A</u>
G.P.S <u>26°06'09.8"S 29°10'13.2"E</u>	Farm <u>Blesbokfontein</u>
Burial No. <u>14</u>	Province <u>Mpumulanga</u>
Reservoir <u>Donna Memorial Park</u>	Country <u>South Africa</u>

**1. LOCATION**

a. Square \_\_\_\_\_  
 b. Horizontal \_\_\_\_\_  
 c. Depth from surface 1m59cm  
 d. Depth from datum \_\_\_\_\_

**2. BURIAL TYPE**

a. Extended X d. Reburial \_\_\_\_\_  
 b. Flexed \_\_\_\_\_ e. Cremation \_\_\_\_\_  
 c. Semiflexed \_\_\_\_\_ f. Part crem \_\_\_\_\_  
 g. Other \_\_\_\_\_

**3. BURIAL DIMENSIONS**

a. Max length 1m57cm Dir. N-S  
 b. Max width 73cm Dir. E-W  
 c. Thickness 22cm

**4. DEPOSITION**

a. Position N-S  
 b. Head to N

**5. GRAVE TYPE**

a. Surface \_\_\_\_\_ c. Cist \_\_\_\_\_  
 b. Pit X d. Other \_\_\_\_\_  
 e. Shape Rectangular

**6. GRAVE DIMENSIONS**

a. Max. length 1m86cm Dir N-S  
 b. Max. width 88cm Dir E-W  
 c. Depth 1m37cm

**7. STRATIFICATION**

a. Inclusive \_\_\_\_\_ c. Precedent \_\_\_\_\_  
 b. Intrusive \_\_\_\_\_ d. Disturbed \_\_\_\_\_  
 e. \_\_\_\_\_

**8. ASSOCIATIONS**

a. Features Informal farm cemetery next to a mielie field and a wet marshy area.

**9. PRESERVATION**

a. Poor X Poor \_\_\_\_\_ Good \_\_\_\_\_

**10. COMPLETENESS**

0%

**22. SEX**

a. M \_\_\_\_\_ F \_\_\_\_\_ Indeterminate X

**12. AGE**

a. Infant \_\_\_\_\_ d. Adult X  
 b. Child \_\_\_\_\_ e. Mature \_\_\_\_\_  
 c. Adolescent \_\_\_\_\_ f. Senile \_\_\_\_\_

**13. NEG. NO.S 14; 31; and 32**

**14. REMARKS** Soil is very, very wet and clayish. The bones have totally disintegrated into a grey coloured clay like texture. The ground water from the nearby stream and marshy land is very high up and the coffin would have been under water most of the time, also depending on rainfall. This has played a large role in the bones disintegrating.



1. HEAD STONE a. Yes \_\_\_\_\_ b. No X

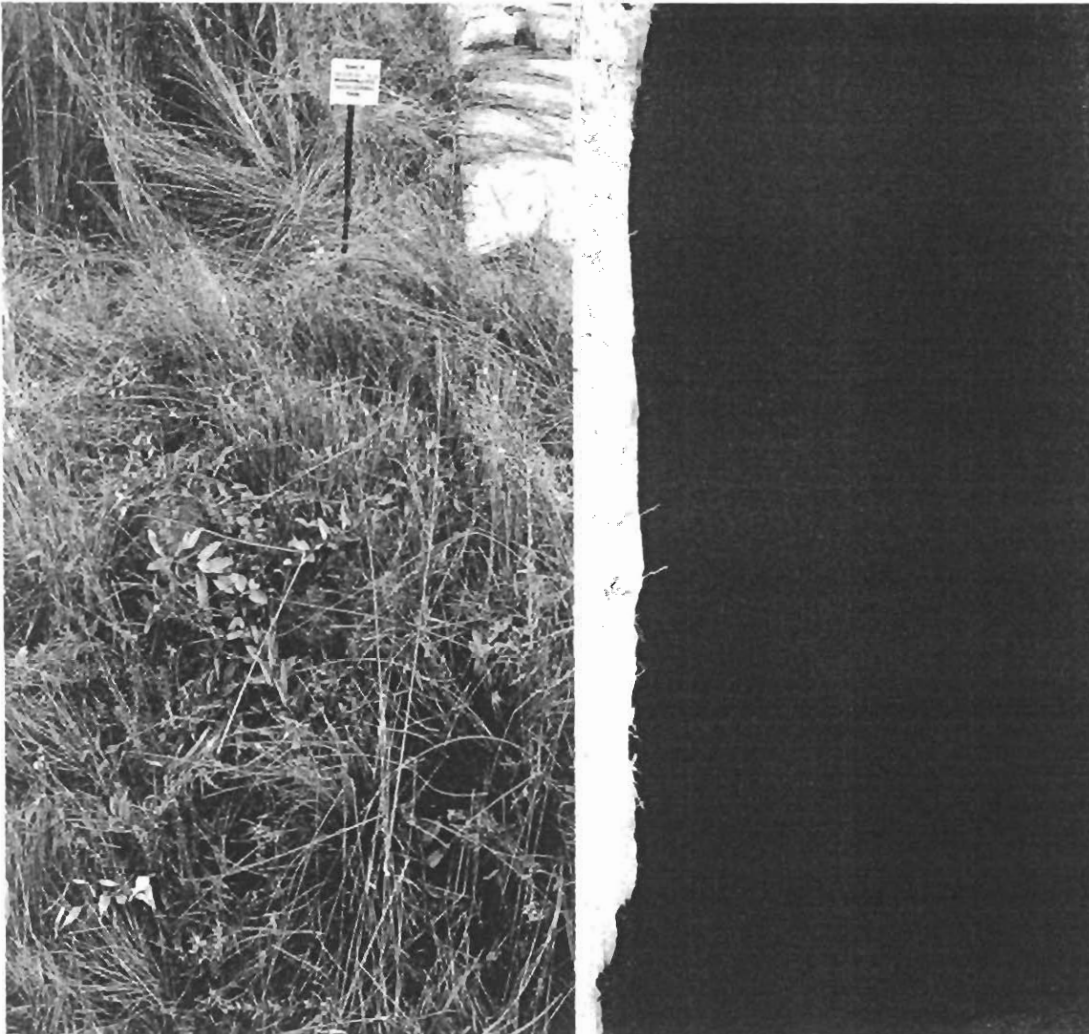
2. HEAD STONE DIMENSIONS  
a. Max length \_\_\_\_\_ -  
b. Max width \_\_\_\_\_ -  
c. Thickness \_\_\_\_\_ -

3. GRAVE PLOT DIMENSIONS  
a. Max length 1m75cm  
b. Max width 1m69cm  
c. Thickness 29cm

4. HEAD STONE INSCRIPTION  
a. No headstone was found. Only stones marked this unknown persons grave.  
\_\_\_\_\_  
\_\_\_\_\_  
\_\_\_\_\_  
\_\_\_\_\_

5. HEAD STONE MATERIAL  
a. \_\_\_\_\_ -

6. PHOTOGRAPHS





**NATIONAL CULTURAL HISTORY MUSEUM  
HUMAN REMAINS BURIAL FORMS**

Feature No. <u>15</u>	Site No. <u>A</u>
G.P.S <u>26°06'09.8"S 29°10'13.2"E</u>	Farm <u>Blesbokfontein</u>
Burial No. <u>15</u>	Province <u>Mpumulanga</u>
Reservoir <u>Donna Memorial Park</u>	Country <u>South Africa</u>

1. LOCATION  
 a. Square \_\_\_\_\_  
 b. Horizontal \_\_\_\_\_  
 c. Depth from surface 1m59cm  
 d. Depth from datum \_\_\_\_\_

2. BURIAL TYPE  
 a. Extended  d. Reburial \_\_\_\_\_  
 b. Flexed \_\_\_\_\_ e. Cremation \_\_\_\_\_  
 c. Semiflexed \_\_\_\_\_ f. Part crem \_\_\_\_\_  
 g. Other \_\_\_\_\_

3. BURIAL DIMENSIONS  
 a. Max length 1m30cm Dir. N-S  
 b. Max width 57cm Dir. E-W  
 c. Thickness 22cm

4. DEPOSITION  
 a. Position N-S  
 b. Head to N

5. GRAVE TYPE  
 a. Surface \_\_\_\_\_ c. Cist \_\_\_\_\_  
 b. Pit  d. Other \_\_\_\_\_  
 e. Shape Rectangular

6. GRAVE DIMENSIONS  
 a. Max. length 1m83cm Dir N-S  
 b. Max. width 97cm Dir E-W  
 c. Depth 1m37cm

7. STRATIFICATION  
 a. Inclusive \_\_\_\_\_ c. Precedent \_\_\_\_\_  
 b. Intrusive \_\_\_\_\_ d. Disturbed \_\_\_\_\_  
 e. \_\_\_\_\_

8. ASSOCIATIONS  
 a. Features Informal farm cemetery next to a mielie field and a wet marshy area.  
 \_\_\_\_\_  
 \_\_\_\_\_  
 \_\_\_\_\_

b. Specimens Coffin wood and a copper necklace or bangle was found.  
 \_\_\_\_\_  
 \_\_\_\_\_  
 \_\_\_\_\_

9. PRESERVATION  
 a. Poor  Poor \_\_\_\_\_ Good \_\_\_\_\_

10. COMPLETENESS  
0.2%

24. SEX  
 a. M \_\_\_\_\_ F \_\_\_\_\_ Indeterminate

12. AGE  
 a. Infant \_\_\_\_\_ d. Adult   
 b. Child \_\_\_\_\_ e. Mature \_\_\_\_\_  
 c. Adolescent  f. Senile \_\_\_\_\_

13. NEG. NO.S 15; 37; and 38

14. REMARKS Soil is very, very wet and clayish. The bones have totally disintegrated into a grey coloured clay like texture. The ground water from the nearby stream and marshy land is very high up and the coffin would have been under water most of the time, also depending on rainfall. This has played a large role in the bones disintegrating. Two very small pieces of worn down leg bone was found. These two bones are very worn, eroded and soft from the wet soil.  
 \_\_\_\_\_  
 \_\_\_\_\_  
 \_\_\_\_\_  
 \_\_\_\_\_  
 \_\_\_\_\_  
 \_\_\_\_\_

1. HEAD STONE a. Yes \_\_\_\_\_ b. No **X** \_\_\_\_\_

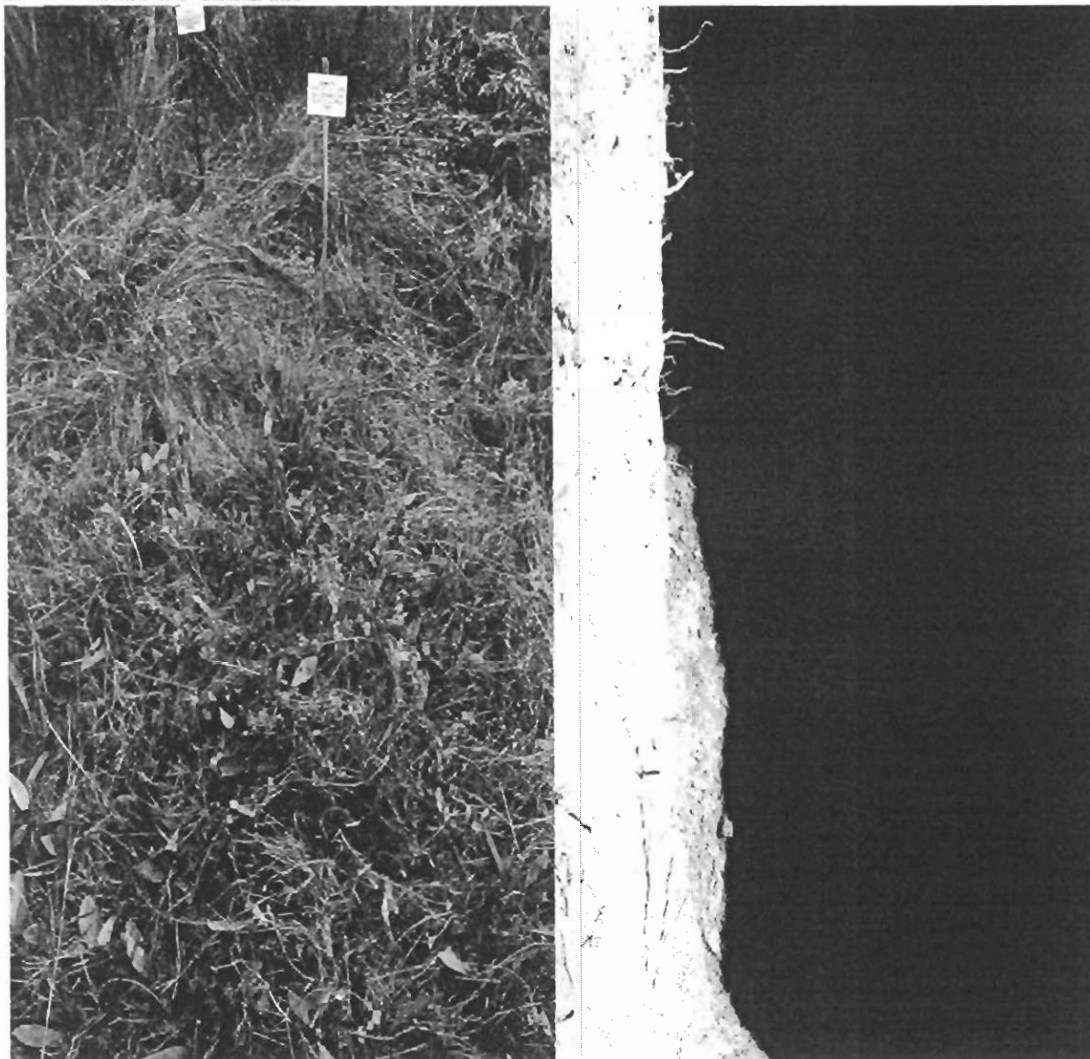
2. HEAD STONE DIMENSIONS  
a. Max length \_\_\_\_\_  
b. Max width \_\_\_\_\_  
c. Thickness \_\_\_\_\_

3. GRAVE PLOT DIMENSIONS  
a. Max length 1m85cm  
b. Max width 1m20cm  
c. Thickness 37cm

4. HEAD STONE INSCRIPTION  
a. No headstone was found. Stones marked the grave of this unknown person.  
\_\_\_\_\_  
\_\_\_\_\_  
\_\_\_\_\_

5. HEAD STONE MATERIAL  
a. -

6. PHOTOGRAPHS



**NATIONAL CULTURAL HISTORY MUSEUM  
HUMAN REMAINS BURIAL FORMS**

Feature No.	<u>20</u>	Site No.	<u>A</u>
G.P.S	<u>26°06'09.8"S 29°10'13.2"E</u>	Farm	<u>Blesbokfontein</u>
Burial No.	<u>22</u>	Province	<u>Mpumulanga</u>
Reservoir	<u>Donna Memorial Park</u>	Country	<u>South Africa</u>

**1. LOCATION**

- a. Square \_\_\_\_\_  
b. Horizontal \_\_\_\_\_  
c. Depth from surface 1m56cm  
d. Depth from datum \_\_\_\_\_

**2. BURIAL TYPE**

- a. Extended  d. Reburial \_\_\_\_\_  
b. Flexed \_\_\_\_\_ e. Cremation \_\_\_\_\_  
c. Semiflexed \_\_\_\_\_ f. Part crem \_\_\_\_\_  
g. Other \_\_\_\_\_

**3. BURIAL DIMENSIONS**

- a. Max length 1m96cm Dir. N-S  
b. Max width 55cm Dir. E-W  
c. Thickness 22cm

**4. DEPOSITION**

- a. Position N-S  
b. Head to N

**5. GRAVE TYPE**

- a. Surface \_\_\_\_\_ c. Cist \_\_\_\_\_  
b. Pit  d. Other \_\_\_\_\_  
e. Shape Rectangular

**6. GRAVE DIMENSIONS**

- a. Max. length 2m22cm Dir N-S  
b. Max. width 70cm Dir E-W  
c. Depth 1m34cm

**7. STRATIFICATION**

- a. Inclusive \_\_\_\_\_ c. Precedent \_\_\_\_\_  
b. Intrusive \_\_\_\_\_ d. Disturbed \_\_\_\_\_  
e. \_\_\_\_\_

**8. ASSOCIATIONS**

- a. Features Informal farm cemetery next to a mielie field and a wet marshy area.  
\_\_\_\_\_  
\_\_\_\_\_  
\_\_\_\_\_  
\_\_\_\_\_  
\_\_\_\_\_

b. Specimens \_\_\_\_\_  
\_\_\_\_\_  
\_\_\_\_\_  
\_\_\_\_\_  
\_\_\_\_\_

**9. PRESERVATION**

- a. Poor  Poor \_\_\_\_\_ Good \_\_\_\_\_

**10. COMPLETENESS**

0%

**11. SEX**

- a. M  F \_\_\_\_\_ Indeterminate \_\_\_\_\_

**12. AGE**

- a. Infant \_\_\_\_\_ d. Adult \_\_\_\_\_  
b. Child \_\_\_\_\_ e. Mature   
c. Adolescent \_\_\_\_\_ f. Senile \_\_\_\_\_

**13. NEG. NO.S 20; 8; and 9**

- 14. REMARKS** Soil is very, very wet and clayish. The bones have totally disintegrated into a grey coloured clay like texture. The ground water from the nearby stream and marshy land is very high up and the coffin would have been under water most of the time, also depending on rainfall. This has played a large role in the bones disintegrating.  
\_\_\_\_\_  
\_\_\_\_\_  
\_\_\_\_\_  
\_\_\_\_\_  
\_\_\_\_\_  
\_\_\_\_\_  
\_\_\_\_\_  
\_\_\_\_\_  
\_\_\_\_\_

1. HEAD STONE a. Yes X b. No \_\_\_\_\_

2. HEAD STONE DIMENSIONS

a. Max length 73cm

b. Max width 50.6cm

c. Thickness 8cm

3. GRAVE PLOT DIMENSIONS

a. Max length 2m46cm

b. Max width 1m10cm

c. Thickness 20cm

4. HEAD STONE INSCRIPTION

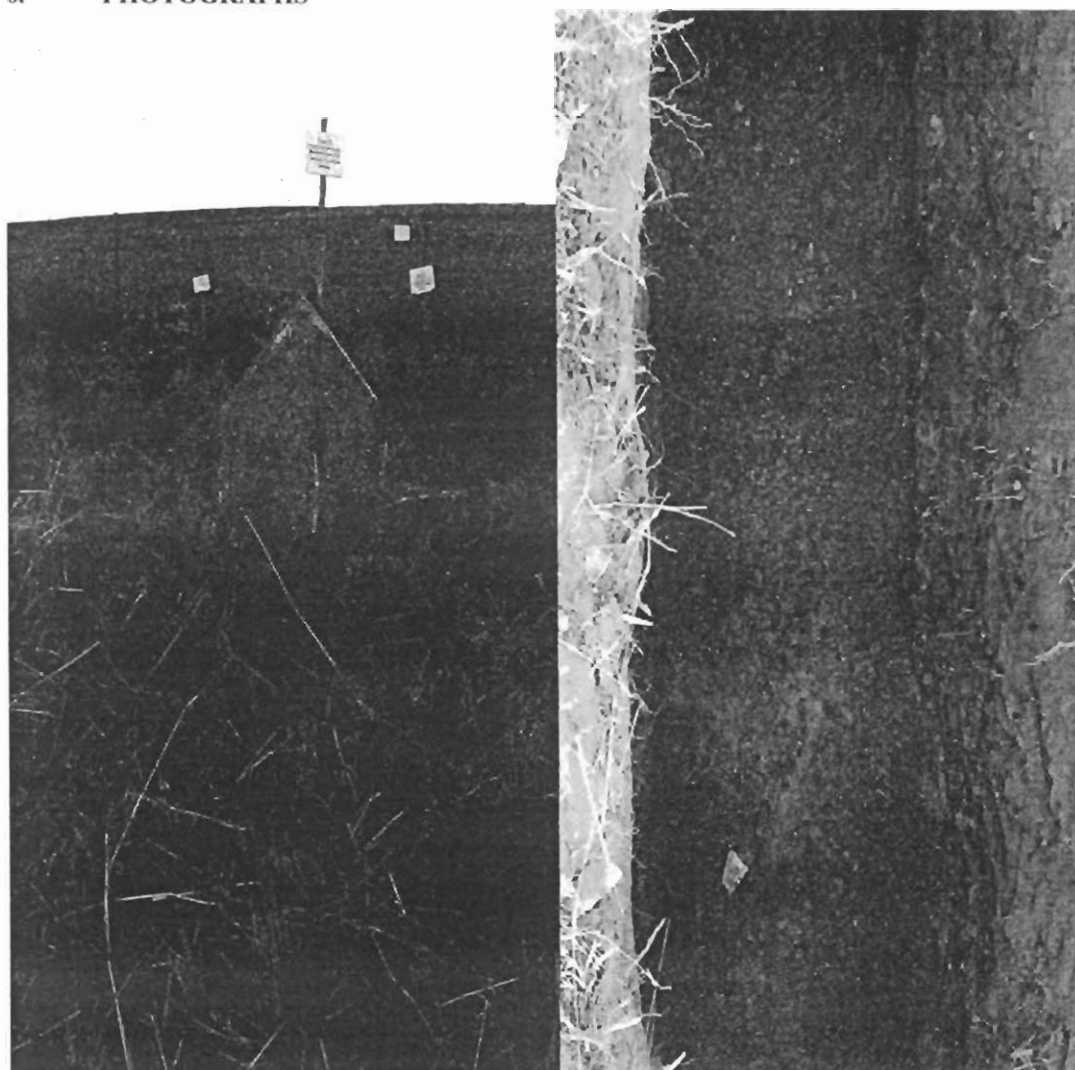
a. HLOKOTHWA; FAKUDE; WALALA NGO; 1940.

\_\_\_\_\_  
\_\_\_\_\_  
\_\_\_\_\_  
\_\_\_\_\_

5. HEAD STONE MATERIAL

a. Home made concrete

6. PHOTOGRAPHS



**NATIONAL CULTURAL HISTORY MUSEUM  
HUMAN REMAINS BURIAL FORMS**

Feature No. <u>21</u>	Site No. <u>A</u>
G.P.S <u>26°06'09.8"S 29°10'13.2"E</u>	Farm <u>Blesbokfontein</u>
Burial No. <u>23</u>	Province <u>Mpumulanga</u>
Reservoir <u>Donna Memorial Park</u>	Country <u>South Africa</u>

**1. LOCATION**

a. Square \_\_\_\_\_  
 b. Horizontal \_\_\_\_\_  
 c. Depth from surface 1m54cm  
 d. Depth from datum \_\_\_\_\_

**2. BURIAL TYPE**

a. Extended X d. Reburial \_\_\_\_\_  
 b. Flexed \_\_\_\_\_ e. Cremation \_\_\_\_\_  
 c. Semiflexed \_\_\_\_\_ f. Part crem \_\_\_\_\_  
 g. Other \_\_\_\_\_

**3. BURIAL DIMENSIONS**

a. Max length 1m48cm Dir. N-S  
 b. Max width 64cm Dir. E-W  
 c. Thickness 24cm

**4. DEPOSITION**

a. Position N-S  
 b. Head to N

**5. GRAVE TYPE**

a. Surface \_\_\_\_\_ c. Cist \_\_\_\_\_  
 b. Pit X d. Other \_\_\_\_\_  
 e. Shape Rectangular

**6. GRAVE DIMENSIONS**

a. Max. length 2m07cm Dir N-S  
 b. Max. width 1m05cm Dir E-W  
 c. Depth 1m30cm

**7. STRATIFICATION**

a. Inclusive \_\_\_\_\_ c. Precedent \_\_\_\_\_  
 b. Intrusive \_\_\_\_\_ d. Disturbed \_\_\_\_\_  
 e. \_\_\_\_\_

**8. ASSOCIATIONS**

a. Features Informal farm cemetery next to a mielie field and a wet marshy area.

b. Specimens Coffin wood was found.

**9. PRESERVATION**

a. Poor X Poor \_\_\_\_\_ Good \_\_\_\_\_

**10. COMPLETENESS**

0%

**28. SEX**

a. M \_\_\_\_\_ F X Indeterminate \_\_\_\_\_

**12. AGE**

a. Infant \_\_\_\_\_ d. Adult \_\_\_\_\_  
 b. Child \_\_\_\_\_ e. Mature X  
 c. Adolescent \_\_\_\_\_ f. Senile \_\_\_\_\_

**13. NEG. NO.S 21; 1; and 2**

**14. REMARKS** Soil is very, very wet and clayish. The bones have totally disintegrated into a grey coloured clay like texture. The ground water from the nearby stream and marshy land is very high up and the coffin would have been under water most of the time, also depending on rainfall. This has played a large role in the bones disintegrating.

1. HEAD STONE a. Yes X b. No \_\_\_\_\_

2. HEAD STONE DIMENSIONS

a. Max length 65cm  
b. Max width 53cm  
c. Thickness 6.8cm

3. GRAVE PLOT DIMENSIONS

a. Max length 2m38cm  
b. Max width 1m31cm  
c. Thickness 14cm

4. HEAD STONE INSCRIPTION

a. LENA FAKUDE  
\_\_\_\_\_  
\_\_\_\_\_  
\_\_\_\_\_  
\_\_\_\_\_

5. HEAD STONE MATERIAL

a. Home made concrete

6. PHOTOGRAPHS



**NATIONAL CULTURAL HISTORY MUSEUM  
HUMAN REMAINS BURIAL FORMS**

Feature No. <u>22</u>	Site No. <u>A</u>
G.P.S <u>26°06'09.8"S 29°10'13.2"E</u>	Farm <u>Blesbokfontein</u>
Burial No. <u>24</u>	Province <u>Mpumulanga</u>
Reservoir <u>Donna Memorial Park</u>	Country <u>South Africa</u>

**1. LOCATION**

a. Square \_\_\_\_\_  
 b. Horizontal \_\_\_\_\_  
 c. Depth from surface 1m51cm  
 d. Depth from datum \_\_\_\_\_

**2. BURIAL TYPE**

a. Extended X d. Reburial \_\_\_\_\_  
 b. Flexed \_\_\_\_\_ e. Cremation \_\_\_\_\_  
 c. Semiflexed \_\_\_\_\_ f. Part crem \_\_\_\_\_  
 g. Other \_\_\_\_\_

**3. BURIAL DIMENSIONS**

a. Max length 1m38cm Dir. N-S  
 b. Max width 64cm Dir. E-W  
 c. Thickness 25cm

**4. DEPOSITION**

a. Position N-S  
 b. Head to N

**5. GRAVE TYPE**

a. Surface \_\_\_\_\_ c. Cist \_\_\_\_\_  
 b. Pit X d. Other \_\_\_\_\_  
 e. Shape Rectangular

**6. GRAVE DIMENSIONS**

a. Max. length 1m83cm Dir N-S  
 b. Max. width 75cm Dir E-W  
 c. Depth 1m26cm

**7. STRATIFICATION**

a. Inclusive \_\_\_\_\_ c. Precedent \_\_\_\_\_  
 b. Intrusive \_\_\_\_\_ d. Disturbed \_\_\_\_\_  
 e. \_\_\_\_\_

**8. ASSOCIATIONS**

a. Features Informal farm cemetery next to a mielie field and a wet marshy area.

b. Specimens Small pieces of coffin wood was found.

**9. PRESERVATION**

a. Poor X Poor \_\_\_\_\_ Good \_\_\_\_\_

**10. COMPLETENESS**

0%

**30. SEX**

a. M \_\_\_\_\_ F \_\_\_\_\_ Indeterminate X \_\_\_\_\_

**12. AGE**

a. Infant \_\_\_\_\_ d. Adult \_\_\_\_\_  
 b. Child X e. Mature \_\_\_\_\_  
 c. Adolescent \_\_\_\_\_ f. Senile \_\_\_\_\_

**13. NEG. NO.S** 22; 10; and 11

**14. REMARKS** Soil is very, very wet and clayish. The bones have totally disintegrated into a grey coloured clay like texture. The ground water from the nearby stream and marshy land is very high up and the coffin would have been under water most of the time, also depending on rainfall. This has played a large role in the bones disintegrating.



1. HEAD STONE a. Yes \_\_\_\_\_ b. No **X** \_\_\_\_\_

2. HEAD STONE DIMENSIONS

a. Max length \_\_\_\_\_  
b. Max width \_\_\_\_\_  
c. Thickness \_\_\_\_\_

3. GRAVE PLOT DIMENSIONS

a. Max length 1m41cm  
b. Max width 61cm  
c. Thickness 17cm

4. HEAD STONE INSCRIPTION

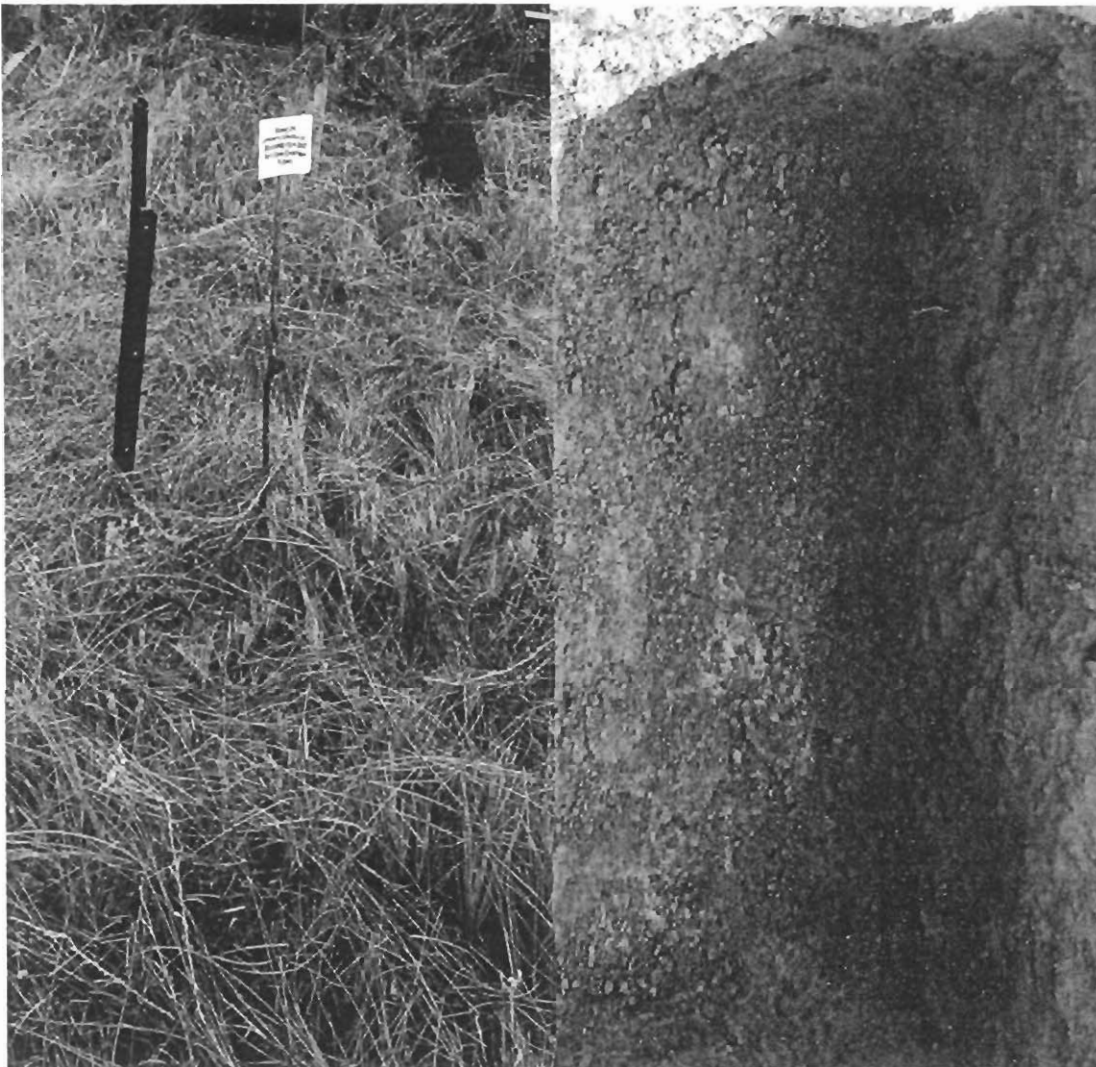
a. No head stone was found. Stones marked the unknown grave.

\_\_\_\_\_  
\_\_\_\_\_  
\_\_\_\_\_

5. HEAD STONE MATERIAL

a. \_\_\_\_\_

6. PHOTOGRAPHS







1. HEAD STONE a. Yes \_\_\_\_\_ b. No **X** \_\_\_\_\_

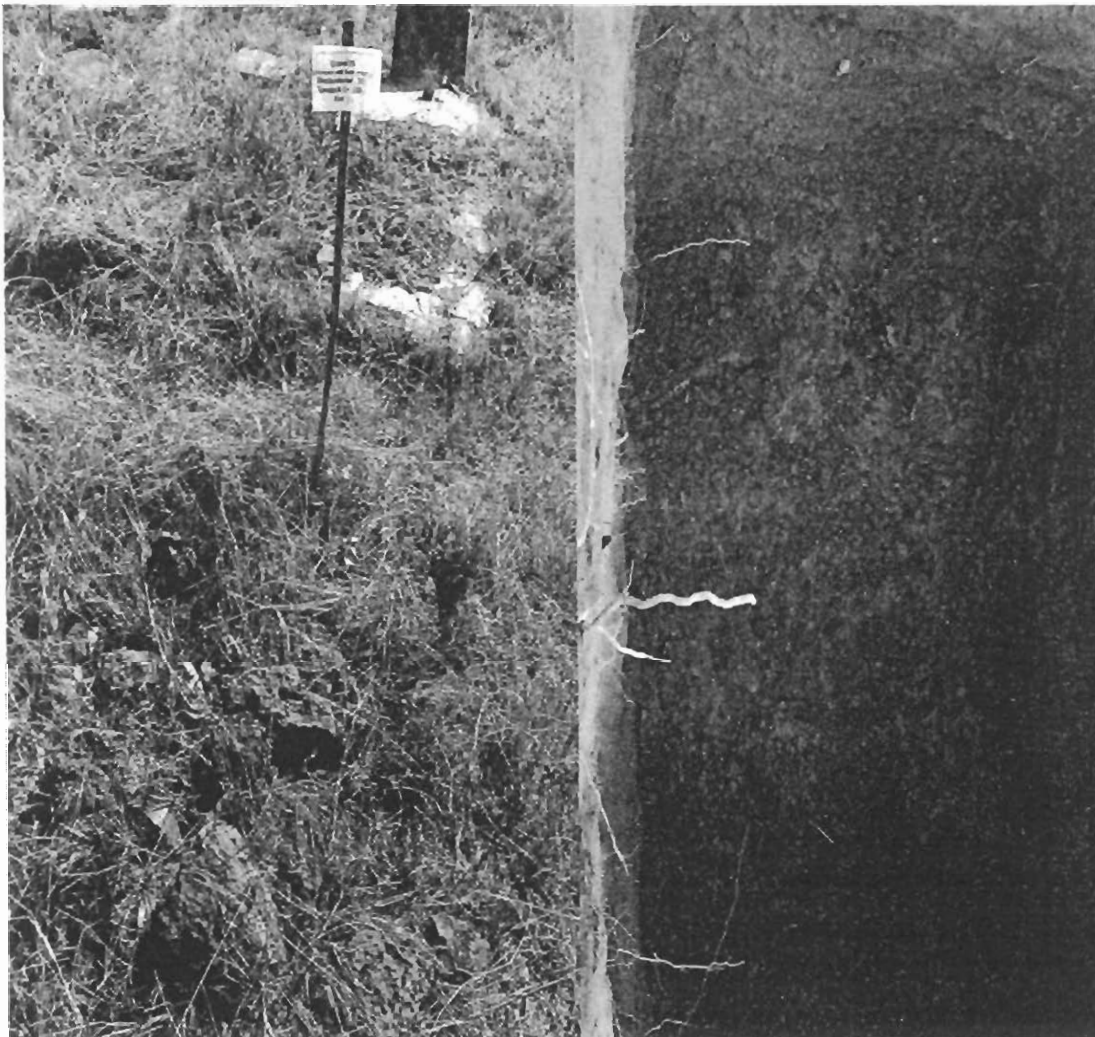
2. HEAD STONE DIMENSIONS  
a. Max length \_\_\_\_\_ - \_\_\_\_\_  
b. Max width \_\_\_\_\_ - \_\_\_\_\_  
c. Thickness \_\_\_\_\_ - \_\_\_\_\_

3. GRAVE PLOT DIMENSIONS  
a. Max length \_\_\_\_\_ **1m43cm** \_\_\_\_\_  
b. Max width \_\_\_\_\_ **90cm** \_\_\_\_\_  
c. Thickness \_\_\_\_\_ **28cm** \_\_\_\_\_

4. HEAD STONE INSCRIPTION  
a. **No headstone was found. Stones marked the grave of this unknown person.** \_\_\_\_\_  
\_\_\_\_\_  
\_\_\_\_\_  
\_\_\_\_\_  
\_\_\_\_\_

5. HEAD STONE MATERIAL  
a. \_\_\_\_\_ - \_\_\_\_\_

6. PHOTOGRAPHS



**NATIONAL CULTURAL HISTORY MUSEUM  
HUMAN REMAINS BURIAL FORMS**

Feature No. <u>24</u>	Site No. <u>A</u>
G.P.S <u>26°06'09.8"S 29°10'13.2"E</u>	Farm <u>Blesbokfontein</u>
Burial No. <u>27</u>	Province <u>Mpumulanga</u>
Reservoir <u>Donna Memorial Park</u>	Country <u>South Africa</u>

**1. LOCATION**

a. Square \_\_\_\_\_  
 b. Horizontal \_\_\_\_\_  
 c. Depth from surface 1m54cm  
 d. Depth from datum \_\_\_\_\_

**2. BURIAL TYPE**

a. Extended  d. Reburial \_\_\_\_\_  
 b. Flexed \_\_\_\_\_ e. Cremation \_\_\_\_\_  
 c. Semiflexed \_\_\_\_\_ f. Part crem \_\_\_\_\_  
 g. Other \_\_\_\_\_

**3. BURIAL DIMENSIONS**

a. Max length 1m55cm Dir. N-S  
 b. Max width 60cm Dir. E-W  
 c. Thickness 23cm

**4. DEPOSITION**

a. Position N-S  
 b. Head to N

**5. GRAVE TYPE**

a. Surface \_\_\_\_\_ c. Cist \_\_\_\_\_  
 b. Pit  d. Other \_\_\_\_\_  
 e. Shape Rectangular

**6. GRAVE DIMENSIONS**

a. Max. length 2m33cm Dir N-S  
 b. Max. width 80cm Dir E-W  
 c. Depth 1m21cm

**7. STRATIFICATION**

a. Inclusive \_\_\_\_\_ c. Precedent \_\_\_\_\_  
 b. Intrusive \_\_\_\_\_ d. Disturbed \_\_\_\_\_  
 e. \_\_\_\_\_

**8. ASSOCIATIONS**

a. Features Informal farm cemetery next to a mielie field and a wet marshy area.

**9. PRESERVATION**

a. Poor  Poor \_\_\_\_\_ Good \_\_\_\_\_

**10. COMPLETENESS**

0%

**26. SEX**

a. M \_\_\_\_\_ F \_\_\_\_\_ Indeterminate

**12. AGE**

a. Infant \_\_\_\_\_ d. Adult   
 b. Child \_\_\_\_\_ e. Mature   
 c. Adolescent \_\_\_\_\_ f. Senile \_\_\_\_\_

**13. NEG. NO.S 24; 43; and 44**

**14. REMARKS** Soil is very, very wet and clayish. The bones have totally disintegrated into a grey coloured clay like texture. The ground water from the nearby stream and marshy land is very high up and the coffin would have been under water most of the time, also depending on rainfall. This has played a large role in the bones disintegrating.

1. HEAD STONE a. Yes \_\_\_\_\_ b. No X

2. HEAD STONE DIMENSIONS

a. Max length \_\_\_\_\_ - \_\_\_\_\_

b. Max width \_\_\_\_\_ - \_\_\_\_\_

c. Thickness \_\_\_\_\_ - \_\_\_\_\_

3. GRAVE PLOT DIMENSIONS

a. Max length \_\_\_\_\_ 2m80cm

b. Max width \_\_\_\_\_ 1m10cm

c. Thickness \_\_\_\_\_ 36cm

4. HEAD STONE INSCRIPTION

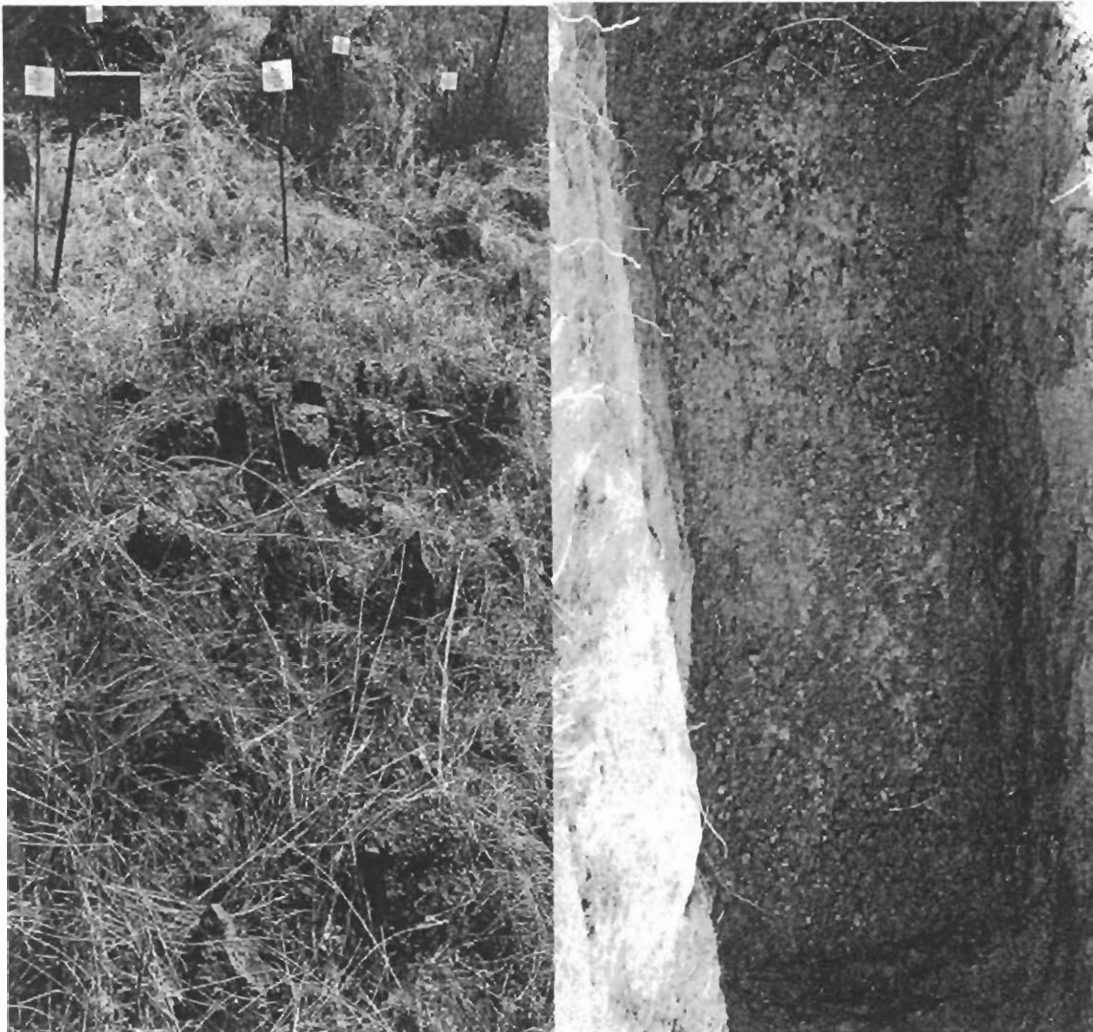
a. No headstone was found. The grave of the unknown person was marked by stones.

\_\_\_\_\_  
\_\_\_\_\_  
\_\_\_\_\_  
\_\_\_\_\_

5. HEAD STONE MATERIAL

a. \_\_\_\_\_ - \_\_\_\_\_

6. PHOTOGRAPHS



**NATIONAL CULTURAL HISTORY MUSEUM  
HUMAN REMAINS BURIAL FORMS**

Feature No. <u>25</u>	Site No. <u>A</u>
G.P.S <u>26°06'09.8"S 29°10'13.2"E</u>	Farm <u>Blesbokfontein</u>
Burial No. <u>28</u>	Province <u>Mpumulanga</u>
Reservoir <u>Donna Memorial Park</u>	Country <u>South Africa</u>

**1. LOCATION**

a. Square \_\_\_\_\_  
 b. Horizontal \_\_\_\_\_  
 \_\_\_\_\_  
 c. Depth from surface 1m53cm  
 d. Depth from datum \_\_\_\_\_

**2. BURIAL TYPE**

a. Extended  d. Reburial \_\_\_\_\_  
 b. Flexed \_\_\_\_\_ e. Cremation \_\_\_\_\_  
 c. Semiflexed \_\_\_\_\_ f. Part crem \_\_\_\_\_  
 g. Other \_\_\_\_\_

**3. BURIAL DIMENSIONS**

a. Max length 1m37cm Dir. N-S  
 b. Max width 66cm Dir. E-W  
 c. Thickness 23cm

**4. DEPOSITION**

a. Position N-S  
 b. Head to N

**5. GRAVE TYPE**

a. Surface \_\_\_\_\_ c. Cist \_\_\_\_\_  
 b. Pit  d. Other \_\_\_\_\_  
 e. Shape Rectangular

**6. GRAVE DIMENSIONS**

a. Max. length 1m85cm Dir N-S  
 b. Max. width 74cm Dir E-W  
 c. Depth 1m30cm

**7. STRATIFICATION**

a. Inclusive \_\_\_\_\_ c. Precedent \_\_\_\_\_  
 b. Intrusive \_\_\_\_\_ d. Disturbed \_\_\_\_\_  
 e. \_\_\_\_\_

**8. ASSOCIATIONS**

a. Features Informal farm cemetery next to a mielie field and a wet marshy area.  
 \_\_\_\_\_  
 \_\_\_\_\_  
 \_\_\_\_\_  
 \_\_\_\_\_

b. Specimens Only small pieces of coffin wood was found.  
 \_\_\_\_\_  
 \_\_\_\_\_  
 \_\_\_\_\_

**9. PRESERVATION**

a. Poor  Poor \_\_\_\_\_ Good \_\_\_\_\_

**10. COMPLETENESS**

0%

**11. SEX**

a. M \_\_\_\_\_ F \_\_\_\_\_ Indeterminate

**12. AGE**

a. Infant \_\_\_\_\_ d. Adult \_\_\_\_\_  
 b. Child  e. Mature \_\_\_\_\_  
 c. Adolescent \_\_\_\_\_ f. Senile \_\_\_\_\_

**13. NEG. NO.S 25; 12; and 13**

**14. REMARKS** Soil is very, very wet and clayish. The bones have totally disintegrated into a grey coloured clay like texture. The ground water from the nearby stream and marshy land is very high up and the coffin would have been under water most of the time, also depending on rainfall. This has played a large role in the bones disintegrating.  
 \_\_\_\_\_  
 \_\_\_\_\_  
 \_\_\_\_\_  
 \_\_\_\_\_  
 \_\_\_\_\_  
 \_\_\_\_\_  
 \_\_\_\_\_

1. HEAD STONE a. Yes \_\_\_\_\_ b. No **X** \_\_\_\_\_

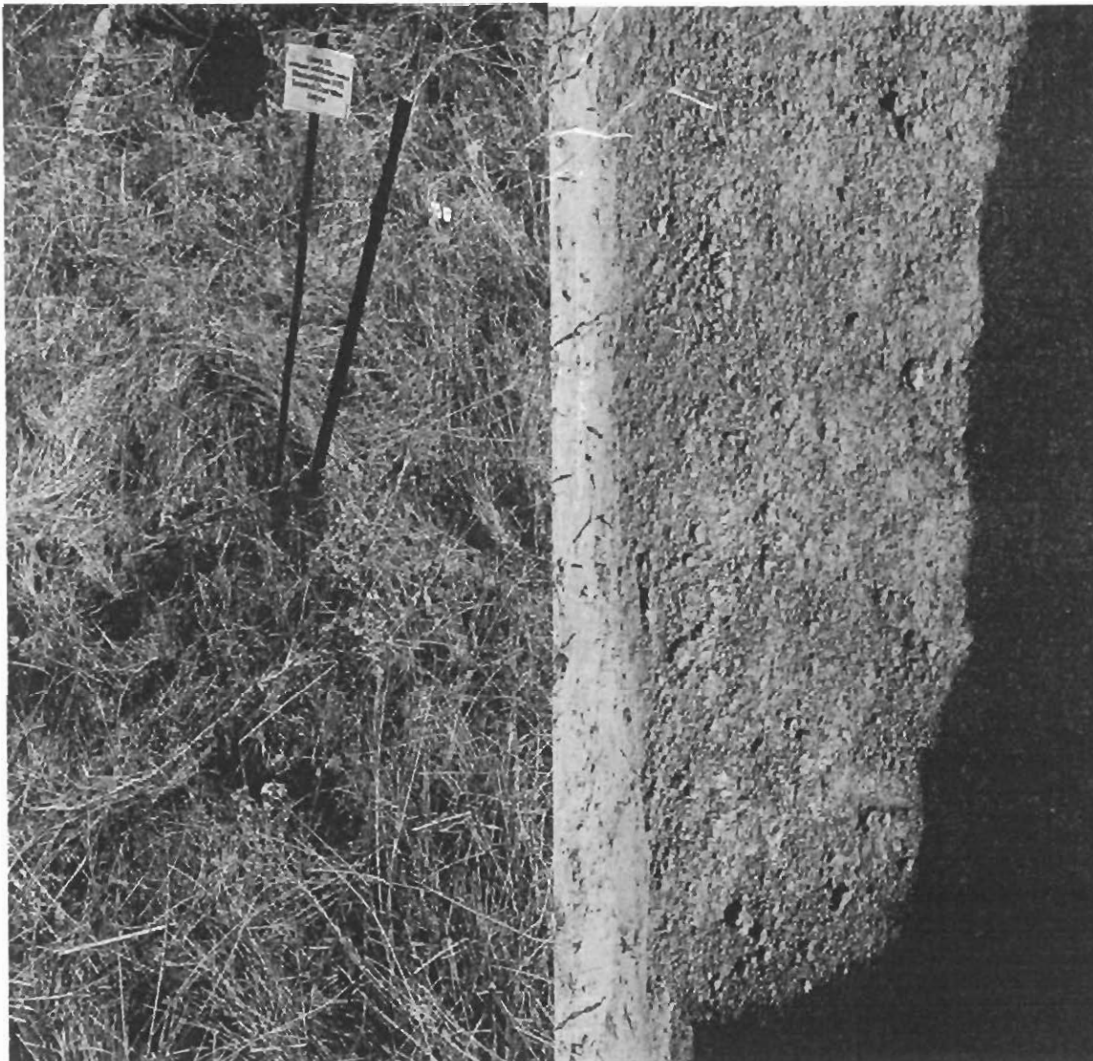
2. HEAD STONE DIMENSIONS  
a. Max length \_\_\_\_\_ -  
b. Max width \_\_\_\_\_ -  
c. Thickness \_\_\_\_\_ -

3. GRAVE PLOT DIMENSIONS  
a. Max length \_\_\_\_\_ **1m05cm** \_\_\_\_\_  
b. Max width \_\_\_\_\_ **49cm** \_\_\_\_\_  
c. Thickness \_\_\_\_\_ -

4. HEAD STONE INSCRIPTION  
a. No head stone was found. Stones marked the grave of this unknown person.  
\_\_\_\_\_  
\_\_\_\_\_  
\_\_\_\_\_

5. HEAD STONE MATERIAL  
a. \_\_\_\_\_ -

6. PHOTOGRAPHS





**NATIONAL CULTURAL HISTORY MUSEUM  
HUMAN REMAINS BURIAL FORMS**

Feature No. <u>32</u>	Site No. <u>A</u>
G.P.S <u>26°06'09.8"S 29°10'13.2"E</u>	Farm <u>Blesbokfontein</u>
Burial No. <u>41</u>	Province <u>Mpumulanga</u>
Reservoir <u>Donna Memorial Park</u>	Country <u>South Africa</u>

**1. LOCATION**

a. Square \_\_\_\_\_  
 b. Horizontal \_\_\_\_\_  
 c. Depth from surface 1m21cm  
 d. Depth from datum \_\_\_\_\_

**2. BURIAL TYPE**

a. Extended X d. Reburial \_\_\_\_\_  
 b. Flexed \_\_\_\_\_ e. Cremation \_\_\_\_\_  
 c. Semiflexed \_\_\_\_\_ f. Part crem \_\_\_\_\_  
 g. Other \_\_\_\_\_

**3. BURIAL DIMENSIONS**

a. Max length 1m19cm Dir. N-S  
 b. Max width 63cm Dir. E-W  
 c. Thickness 20cm

**4. DEPOSITION**

a. Position N-S  
 b. Head to N

**5. GRAVE TYPE**

a. Surface \_\_\_\_\_ c. Cist \_\_\_\_\_  
 b. Pit X d. Other \_\_\_\_\_  
 e. Shape Rectangular

**6. GRAVE DIMENSIONS**

a. Max. length 1m54cm Dir N-S  
 b. Max. width 92cm Dir E-W  
 c. Depth 1m01cm

**7. STRATIFICATION**

a. Inclusive \_\_\_\_\_ c. Precedent \_\_\_\_\_  
 b. Intrusive \_\_\_\_\_ d. Disturbed \_\_\_\_\_  
 e. \_\_\_\_\_

**8. ASSOCIATIONS**

a. Features Informal farm cemetery next to a mielie field and a wet marshy area.

b. Specimens \_\_\_\_\_

**9. PRESERVATION**

a. Poor X Poor \_\_\_\_\_ Good \_\_\_\_\_

**10. COMPLETENESS**

0%

**32. SEX**

a. M \_\_\_\_\_ F \_\_\_\_\_ Indeterminate X

**12. AGE**

a. Infant X? d. Adult \_\_\_\_\_  
 b. Child X? e. Mature \_\_\_\_\_  
 c. Adolescent \_\_\_\_\_ f. Senile \_\_\_\_\_

**13. NEG. NO.S 33; and 34**

**14. REMARKS** Soil is very, very wet and clayish. The bones have totally disintegrated into a grey coloured clay like texture. The ground water from the nearby stream and marshy land is very high up and the coffin would have been under water most of the time, also depending on rainfall. This has played a large role in the bones disintegrating.

1. HEAD STONE a. Yes \_\_\_\_\_ b. No **X** \_\_\_\_\_

2. HEAD STONE DIMENSIONS

a. Max length \_\_\_\_\_ - \_\_\_\_\_  
b. Max width \_\_\_\_\_ - \_\_\_\_\_  
c. Thickness \_\_\_\_\_ - \_\_\_\_\_

3. GRAVE PLOT DIMENSIONS

a. Max length \_\_\_\_\_ **1m56cm** \_\_\_\_\_  
b. Max width \_\_\_\_\_ **94cm** \_\_\_\_\_  
c. Thickness \_\_\_\_\_ **7.3cm** \_\_\_\_\_

4. HEAD STONE INSCRIPTION

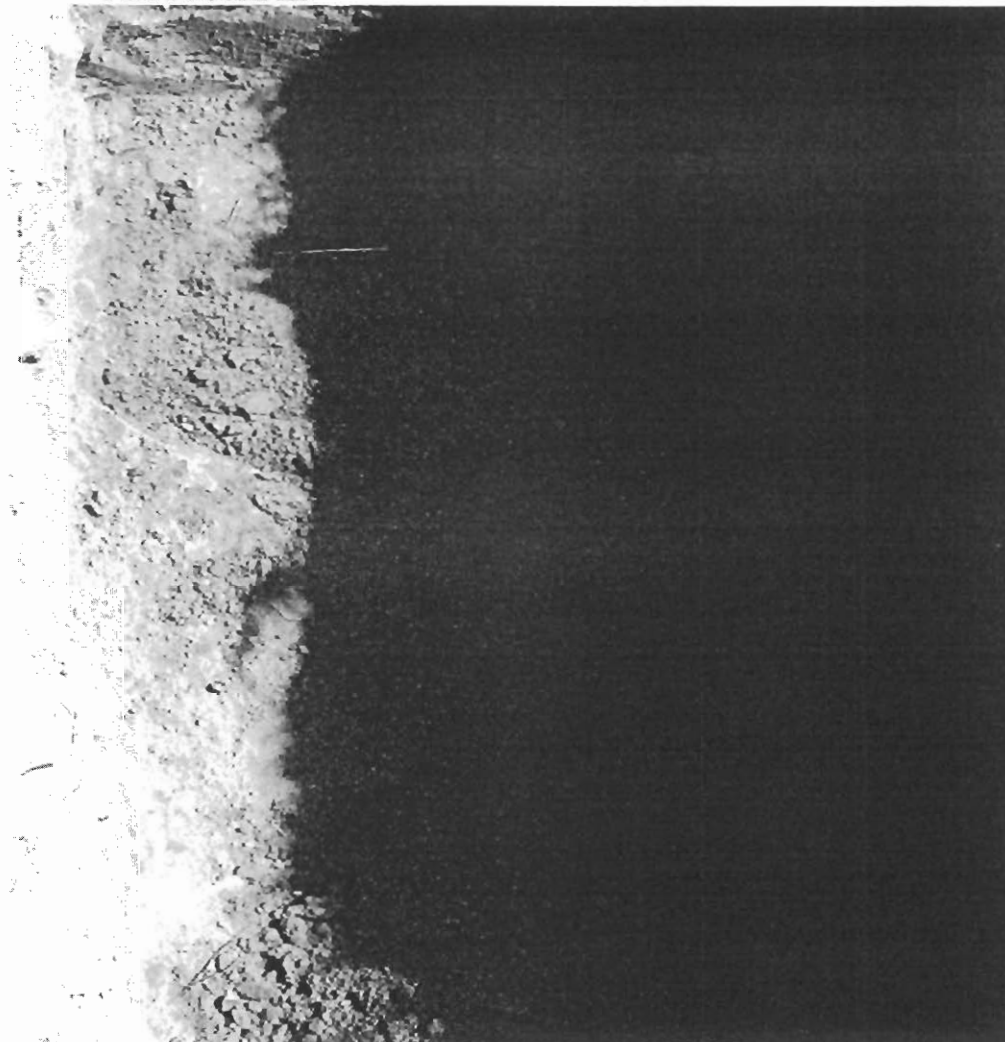
a. **No headstone was found. Stones marked the grave of this unknown person.**

\_\_\_\_\_  
\_\_\_\_\_  
\_\_\_\_\_

5. HEAD STONE MATERIAL

a. \_\_\_\_\_

6. PHOTOGRAPHS





**NATIONAL CULTURAL HISTORY MUSEUM  
HUMAN REMAINS BURIAL FORMS**

Feature No. <u>33</u>	Site No. <u>A</u>
G.P.S <u>26°06'09.8"S 29°10'13.2"E</u>	Farm <u>Blesbokfontein</u>
Burial No. <u>42</u>	Province <u>Mpumulanga</u>
Reservoir <u>Donna Memorial Park</u>	Country <u>South Africa</u>

**1. LOCATION**

a. Square \_\_\_\_\_  
 b. Horizontal \_\_\_\_\_  
 c. Depth from surface 1m49cm  
 d. Depth from datum \_\_\_\_\_

**2. BURIAL TYPE**

a. Extended  d. Reburial \_\_\_\_\_  
 b. Flexed \_\_\_\_\_ e. Cremation \_\_\_\_\_  
 c. Semiflexed \_\_\_\_\_ f. Part crem \_\_\_\_\_  
 g. Other \_\_\_\_\_

**3. BURIAL DIMENSIONS**

a. Max length 1m38cm Dir. N-S  
 b. Max width 44cm Dir. E-W  
 c. Thickness 27cm

**4. DEPOSITION**

a. Position N-S  
 b. Head to N

**5. GRAVE TYPE**

a. Surface \_\_\_\_\_ c. Cist \_\_\_\_\_  
 b. Pit  d. Other \_\_\_\_\_  
 e. Shape Rectangular

**6. GRAVE DIMENSIONS**

a. Max. length 1m64cm Dir N-S  
 b. Max. width 73cm Dir E-W  
 c. Depth 1m22cm

**7. STRATIFICATION**

a. Inclusive \_\_\_\_\_ c. Precedent \_\_\_\_\_  
 b. Intrusive \_\_\_\_\_ d. Disturbed \_\_\_\_\_  
 e. \_\_\_\_\_

**8. ASSOCIATIONS**

a. Features Informal farm cemetery next to a mielie field and a wet marshy area.  
 \_\_\_\_\_  
 \_\_\_\_\_  
 \_\_\_\_\_  
 \_\_\_\_\_  
 \_\_\_\_\_  
 b. Specimens 1x animal femur was found just under the rocks that marked the grave  
A metal rod was found under the rocks.

**9. PRESERVATION**

a. Poor  Poor \_\_\_\_\_ Good \_\_\_\_\_

**10. COMPLETENESS**

0%

**33. SEX**

a. M \_\_\_\_\_ F \_\_\_\_\_ Indeterminate

**12. AGE**

a. Infant \_\_\_\_\_ d. Adult   
 b. Child \_\_\_\_\_ e. Mature \_\_\_\_\_  
 c. Adolescent \_\_\_\_\_ f. Senile \_\_\_\_\_

**13. NEG. NO.S 41; and 42**

**14. REMARKS** Soil is very, very wet and clayish. The bones have totally disintegrated into a grey coloured clay like texture. The ground water from the nearby stream and marshy land is very high up and the coffin would have been under water most of the time, also depending on rainfall. This has played a large role in the bones disintegrating.  
 \_\_\_\_\_  
 \_\_\_\_\_  
 \_\_\_\_\_  
 \_\_\_\_\_  
 \_\_\_\_\_  
 \_\_\_\_\_  
 \_\_\_\_\_

1. HEAD STONE a. Yes \_\_\_\_\_ b. No **X** \_\_\_\_\_

2. HEAD STONE DIMENSIONS

a. Max length \_\_\_\_\_ - \_\_\_\_\_  
b. Max width \_\_\_\_\_ - \_\_\_\_\_  
c. Thickness \_\_\_\_\_ - \_\_\_\_\_

3. GRAVE PLOT DIMENSIONS

a. Max length \_\_\_\_\_ **2m80cm** \_\_\_\_\_  
b. Max width \_\_\_\_\_ **1m10cm** \_\_\_\_\_  
c. Thickness \_\_\_\_\_ **36cm** \_\_\_\_\_

4. HEAD STONE INSCRIPTION

a. **No head stone was found. The unknown grave was marked by stones.**  
\_\_\_\_\_  
\_\_\_\_\_  
\_\_\_\_\_

5. HEAD STONE MATERIAL

a. \_\_\_\_\_

6. PHOTOGRAPHS

