

MVELAPHANDA MANAGEMENT CONSULTANCY CC

**PROPOSED ESTABLISHMENT OF CEMETERIES AT KALKSPRUIT
IN AGANANG LOCAL MUNICIPALITY CAPRICORN DISTRICT,
LIMPOPO PROVINCE**

**PHASE 1 CULTURAL AND ARCHAEOLOGICAL HERITAGE ASSESSMENT
SPECIALIST STUDY**

July 2007, Polokwane

PREPARED BY

Nzumbululo Heritage Solutions

Suite 345#, Postnet Library Gardens; P.Bag 9307, Polokwane; 0700;

Tel: +27 15 297 8066; Fax: +27 15 297 0059

E-mail: hessa5@telkomsa.net

PREPARED FOR

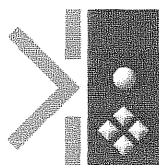
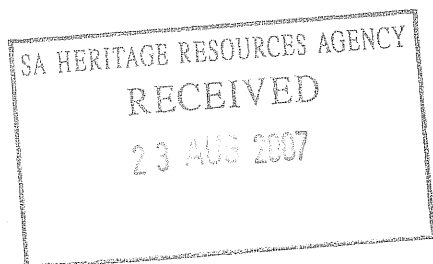
Mvelaphanda Management Consultancy cc

11 Pierre Street, Thabiso IT Park

Bendor Drive, Polokwane, 0699

Tel: +27 15 291 0788

Fax: +27 12 256 4228



Nzumbululo
heritage solutions south africa

REG. No. 2003/104596/23 VAT No. 4580215095 ITax No. 9333/585/15/7P

www.hessa.co.za

REPORT DETAILS

PROJECT NAME: Proposed Establishment of Cemetery at Kalkspruit in Aganang Municipality.

REPORT TITLE: CULTURAL AND ARCHAEOLOGICAL HERITAGE ASSESSMENT SPECIALIST STUDY

AUTHOR: Dr McEdward Murimbika

REFERENCE NO.: HIA

STATUS OF REPORT: Final

FINAL ISSUE: Date: July 2007

STUDY LEADER **Dr. McEdward Murimbika**

Qualifications: (PhD. [Archaeology] , Univ. of Witwatersrand; M.Phil. [Archaeology] 1999, Univ. Of Bergen, Norway; **Graduate International Certificate in African Archaeology**, 1998, Univ. of Brussels, Belgium; **BA Hons. & BA Gen. [Archaeology]** 1995 & 1994, UZ).
Contacts: Mobile Phone: 083 6136530

FIELD STUDY **Principal Investigator:** Dr McEdward Murimbika

TEAM **Assistant Archaeologist:** Mr Mabuda M. Moses (BA Hons, in Archaeology 2002, Univ. of Venda)

PROFESSIONAL SERVICE PROVIDER (PSP) Nzumbululo Heritage Solutions (South Africa) cc.

MANAGEMENT SUMMARY

BACKGROUND

The present Archaeological and Cultural Heritage Impact Assessment (HIA) study was conducted as part of the Environmental Impact Assessment (EIA) for the proposed establishment of new cemetery at Kalkspruit in Aganang Local Municipality of Capricorn District. The HIA study focus on identifying and assessing archaeological, cultural, and historical heritage resources associated with the proposed cemetery development's receiving environment.

SUMMARY RESULTS

This study was conducted in two phases. The first phase involved the archaeological and cultural heritage field survey within the area affected by the proposed establishment of cemetery. The second phase consisted of the assessment and report production. No archaeological, historical or any other physical cultural heritage properties of significance were identified on the direct path of the proposed cemetery establishment.

SUMMARY RECOMMENDATIONS

- No archaeological and any other category of cultural heritage resources are affected or potentially affected by the proposed cemetery establishment project.
- There is potential of encountering chance archaeological finds subsurface during development of infrastructure associated with the proposed cemetery. Should such materials be encountered, the heritage authorities must be informed immediately.
- We further recommend that a heritage awareness workshop be organised for the construction contractors and their work teams that will work on the project. That means the potential for previously unidentified archaeological material to be encountered should be contained in the EMP for the project.
- With these considerations, this study did not identify archaeological or cultural heritage barriers to the proposed establishment of cemeteries project. As such, there are no objections to the proposed development project.

TABLE OF CONTENTS

REPORT DETAILS	ii
MANAGEMENT SUMMARY	iii
BACKGROUND.....	iii
SUMMARY RESULTS.....	iii
SUMMARY RECOMMENDATIONS.....	iii
ABBREVIATIONS	- 1 -
DEFINITIONS	- 2 -
HERITAGE IMPACT ASSESSMENT STUDY FOR PROPOSED ESTABLISHMENT OF CEMETERIES AT KALKSPRUIT IN AGANANG LOCAL MUNICIPALITY OF CAPRICORN DISTRICT, LIMPOPO PROVINCE	- 3 -
1 INTRODUCTION	- 3 -
2 AIMS OF THE CHA STUDY	- 3 -
3 BRIEF BACKGROUND	- 4 -
4 CULTURAL HERITAGE ASSESSMENT STUDY METHODS	- 5 -
5 RESULTS	- 5 -
<i>LOCATION DETAILS</i>	<i>- 5 -</i>
<i>Archaeological and Cultural Sites</i>	<i>- 6 -</i>
<i>Historic Monuments</i>	<i>- 6 -</i>
<i>Cemeteries and burial sites</i>	<i>- 6 -</i>
6 OVERALL RECOMMENDATIONS	- 6 -
7 REFERENCES	- 7 -

ABBREVIATIONS

EIA	Environmental Impact Assessment
HeSSA	Nzumbululo Heritage Solutions (South Africa)
HIA	Heritage Impact Assessment
CHA	Cultural Heritage Assessment
SAHRA	South African Heritage Resources Agency

DEFINITIONS

Archaeological Material remains resulting from human activities, which are in a state of disuse and are in, or on, land and which are older than 100 years, including artefacts, human and hominid remains, and artificial features and structures.

Chance Finds Archaeological artefacts, features, structures or historical cultural remains such as human burials that are found accidentally in context previously not identified during cultural heritage scoping, screening and assessment studies. Such finds are usually found during earth moving activities such as water pipeline trench excavations.

Cultural Heritage Resources Same as Heritage Resources as defined and used in the South African Heritage Resources Act (Act No. 25 of 1999). Refer to physical cultural properties such as archaeological and palaeontological sites; historic and prehistoric places, buildings, structures and material remains; cultural sites such as places of ritual or religious importance and their associated materials; burial sites or *graves* and their associated materials; geological or natural features of cultural importance or scientific significance. Cultural Heritage Resources also include intangible resources such as religion practices, ritual ceremonies, oral histories, memories and indigenous knowledge.

Cultural Significance The complexities of what makes a place, materials or intangible resources of value to society or part of, customarily assessed in terms of aesthetic, historical, scientific/research and social values.

Grave A place of interment (variably referred to as burial), including the contents, headstone or other marker of such a place, and any other structure on or associated with such place. A grave may occur in isolation or in association with others where upon it is referred to as being situated in a cemetery.

Historic Material remains resulting from human activities, which are younger than 100 years, but no longer in use, including artefacts, human remains and artificial features and structures.

In Situ material *Material culture* and surrounding deposits in their original location and context, for example an archaeological site that has not been disturbed by farming.

Material culture Buildings, structure, features, tools and other artefacts that constitute the remains from past societies.

Site A distinct spatial cluster of artefacts, structures, organic and environmental remains, as residues of past human activity.

HERITAGE IMPACT ASSESSMENT STUDY FOR PROPOSED ESTABLISHMENT OF CEMETERIES AT KALKSPRUIT IN AGANANG LOCAL MUNICIPALITY OF CAPRICORN DISTRICT, LIMPOPO PROVINCE

1 INTRODUCTION

Mvelaphanda Management Consultancy cc (Environmental Consulting Services) has been appointed to conduct an Environmental Impact Assessment (EIA) for the proposed establishment of a cemetery at Kalkspruit Village of Aganang Local Municipality, Capricorn District. In order to obtain environmental authorisation and clearances from the Department of Economic Development, Environment and Tourism, Mvelaphanda Management Consultancy appointed Nzumbululo Heritage Solutions (HeSSA) to handle the Archaeological and Cultural Heritage Impact Assessment (HIA) study for the project area as part of the EIA.

Table 1: General TOR for the Heritage Impact Assessment Study associated with the proposed cemeteries development project.

PURPOSE	ACTIVITIES
<ul style="list-style-type: none"> <input type="checkbox"/> To fulfil requirements of the National Heritage Resources Act, Act No. 25 of 1999, Section 38. In so doing - <input type="checkbox"/> Identify and describe (in terms of their conservation and / or preservation importance) sites of cultural and archaeological importance that may be affected by the proposed cemetery development project. This study should include the identification of gravesites. <input type="checkbox"/> Identify and describe impacts on archaeological, cultural heritage, religious resources and practices associated with the proposed development project area. 	<ul style="list-style-type: none"> <input type="checkbox"/> Identify, describe and map sites of archaeological, historical or cultural interest affected by the proposed development. <input type="checkbox"/> Liaise with the local communities (where applicable) with regards to the impact of the development on the heritage resources. <input type="checkbox"/> Describe the importance or significance of these sites and whether these sites need to be conserved, protected or relocated. <input type="checkbox"/> Describe the procedures for mitigation or relocation of sites and provide an indication of time required for these management measures to be implemented. <input type="checkbox"/> Document findings and recommendations.

2 AIMS OF THE CHA STUDY

This HIA study primarily seeks to fulfil the requirements of South African Heritage Resources Act (Act No. 25 of 1999) Section 38 by:

- Identifying heritage resources affected by the proposed cemetery development project.

- ❑ Assess the significance of the resources and evaluate the impact thereon with respect to the socio-economic opportunities and benefits that would be derived from the proposed development.
- ❑ Consult with the affected and other interested parties with regard to the impact on the heritage resources in the project's receiving environment.
- ❑ Make recommendations on mitigation measures with the view to reduce specific adverse impacts and enhance specific positive impacts on the heritage resources.
- ❑ Identify and discuss with local communities (where applicable) on potential impacts of the proposed development on graves and burials sites within the development area and make the necessary recommendations on how to handle the matter.
- ❑ Take responsibility for communicating with the SAHRA and other authorities in order to obtain the relevant permits and authorization.

3 BRIEF BACKGROUND

The proposed project area covers 10 000m² in extent. The proponent is proposing to establish a formal cemetery/graveyard for the nearby villages. The site earmarked for this development is currently used for in part for subsistence agricultural activities and domestic grazing. Concerning archaeological and physical cultural heritage resources, no systematic archaeological or cultural heritage assessment studies are on record covering the area affected by the proposed establishment of cemeteries project. However, judging from the current land use activities in the project area, it was anticipated that some archaeological resources, if they existed, might have been already affected (see Plate 1).

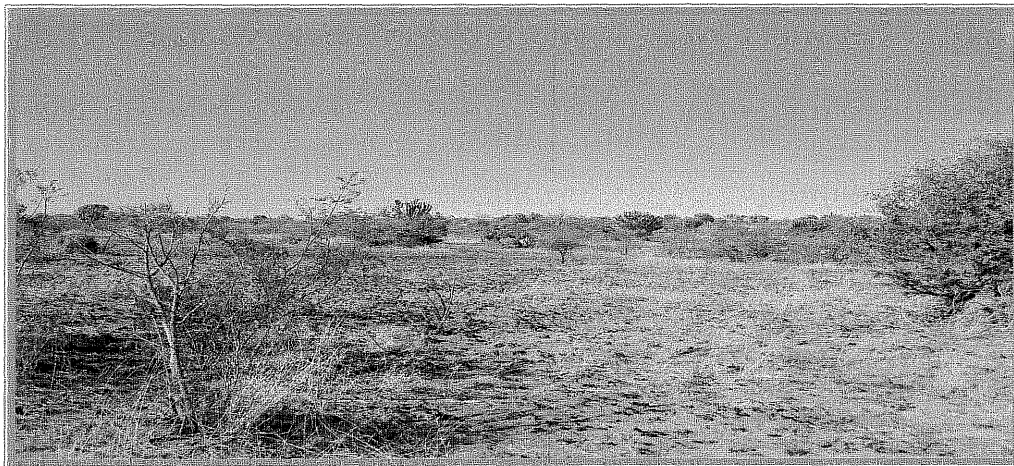


Plate 1: Part of the area affected by the proposed cemetery development project is currently being used for agricultural activities.

4 CULTURAL HERITAGE ASSESSMENT STUDY METHODS

The study consisted of standard archaeology field foot surveys covering the proposed development area covering approximately 10 000m². The search for possible archaeological sites extended to the project area buffer zone and the respective surrounding areas. Archaeological and historical sites are found through systematic survey of the target landscapes. The survey also sought to identify cultural heritage sites including graves, burial grounds and contemporary religious or sacred ceremonial sites associated with the project area's receiving environment.

Naturally, identification of archaeological or historical sites during surveying depends on visibility and accessibility. Portion of the proposed project area was previously used for agriculture and is currently being used for grazing. Portion of the affected project area was used as a borrow-pit for extraction of gravel material for road construction (Plate 2). In such situation, the chance of encountering archaeological or historical materials in situ were limited.

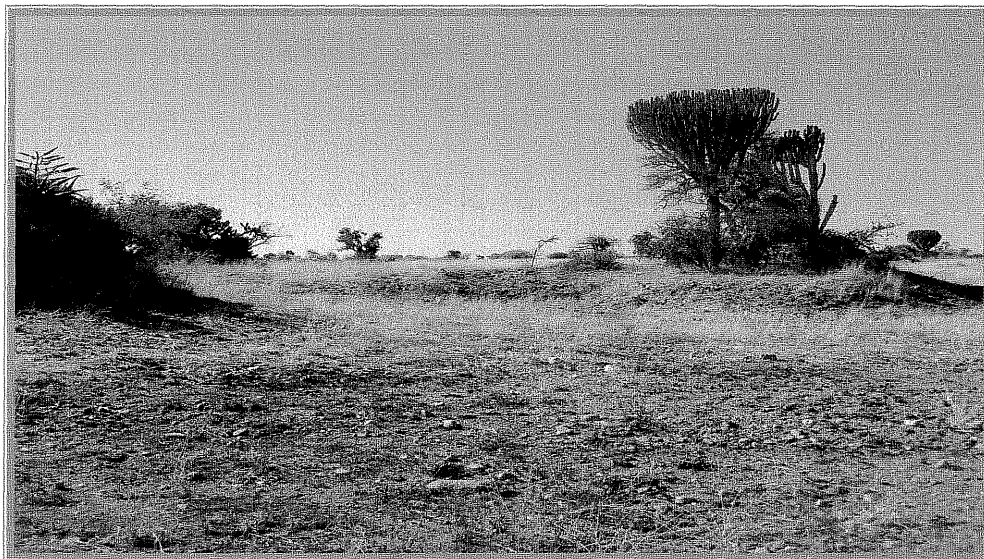


Plate 2: Section of the proposed development project was affected by road construction activities during extraction of gravel materials for road.

5 RESULTS

LOCATION DETAILS

Province: Limpopo

District Municipality: Capricorn

Name of affected Properties: Kalkspruit Village

Proposed development: Establishment of Cemetery

Size of the affected area: 10 000m²

1:50 000 map name: 2428 (see Attached Topographical map)

Co-ordinates

Four coordinates were picked from four cardinal points marking the boundaries of the farmland earmarked for the development.

- S23 ° 47'. 59.6" E 29° 09' 11.4"
- S23 ° 48'. 01.0" E 29° 09' 08.8"
- S23 ° 48'. 05.1" E 29° 09' 12.6"
- S23 ° 48'. 00.7" E 29° 09' 13.5"

Archaeological and Cultural Sites

No archaeological sites or other categories of physical cultural heritage properties or materials were identified on the proposed project area. Furthermore, the proposed development on the identified site is unlikely to impact on cultural heritage resources because the affected area has very low potential to yield such sites. The area has been disturbed previously and considerable portion of the land was even used as a gravel burrow pit.

Historic Monuments

No historical sites or features of significance were identified as potentially affected by the proposed development.

Cemeteries and burial sites

No burial grounds or grave sites were identified as affected by the proposed development. Nonetheless, there is always a potential of encountering previously unknown grave during construction work such as the one proposed in this project. As such, should graves be encountered accidentally during construction, work on affected area should cease and the contractors shall inform the project managers who in turn shall inform the heritage authorities. There are laid out procedure and regulations that govern how archaeological and historical, including previously unknown graves or burial sites may be treated. Such regulations shall be implemented should the situation arise in this proposed development.

6 OVERALL RECOMMENDATIONS

- No sites of cultural or archaeological significance were identified that are affected by the proposed cemetery establishment project. Nonetheless, given the nature of the proposed work, should previously unknown archaeological materials be disturbed underground, we recommend that heritage authorities be informed immediately.

- Should archaeological artefacts be encountered on site, they shall not be removed under any circumstances without the permits from South African Heritage Resources Agency (SAHRA). Any destruction of an archaeological site, including previously unidentified ones site can only be allowed once a permit is obtained and the site has been mapped and noted.
- With these considerations, from an archaeological and cultural heritage perspective, there are no objections to the proposed establishment of cemeteries project.
- We recommend that the heritage authority, SAHRA, approve the project as planned and recommend that a monitoring plan be in place during the development of the cemetery.

7 REFERENCES

Hammond-Tooke, D.1993 *The roots of Black South African*. Johannesburg: WUP.

The National Heritage Resources Act (Act No.25 of 1999)