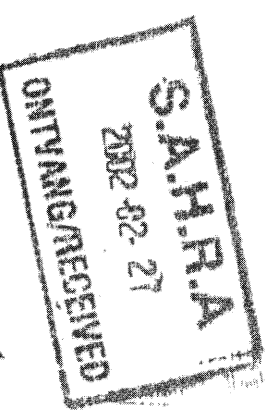


9-2-266-003-20020201-AINP

09/02/2003

PO Box 7296
Thohoyandou
0950
South Africa

Archaeo-Info Northern Province



Heritage impact Assessment for the North West Network

*Evaluation of the heritage component of the Environmental
Impact Assessment for the North West Network
Telecommunications Development, Northern Province*

TABLE OF CONTENTS

<u>EXECUTIVE SUMMARY</u>	3
<u>INTRODUCTION</u>	4
<u>LOCATION</u>	4
<u>FIELDWORK</u>	4
<u>METHODOLOGY</u>	4
<u>THE SITES</u>	5
<u>RECOMMENDATIONS</u>	7
<u>CONCLUSION</u>	7
<u>REFERENCES</u>	7
<u>ADDENDUM A</u>	PHOTOGRAPHS

North West Network

Evaluation of the Heritage Potential of the Project

Executive Summary

Site name and location: Telkom Microwave Masts, North West Network: Rooirant, Tafelkop, 24 Riviere, Kalkspruit, Koniggratz, Northern Province

Magisterial district: Rooirant - Lephahale

Tafelkop - Lephahale

24 Riviere - Mogalakwena

Kalkspruit - Molemoie

Koniggratz - Aganang

Developer: Telkom SA (Ltd)

Consultant: AINP, PO Box 7296, Thohoyandou, 0950, South Africa

Date development was mooted: November, 2001

Date of Report: 05 February 2002

Proposed date of commencement of development: February 2002

Findings: It is the finding of the proposed erection of 5 Telkom masts can continue as the sites involved are already developed and no sites of historical, cultural or archaeological value were found.

Introduction

Archaeo-Info Northern Province (AINP) was contracted by Theo Kotze to conduct a Heritage Impact Assessment (HIA) on the proposed erection of Telkom masts on 5 sites: Rootrant (Site 1), Tafelkop (Site 2), 24 Riviere (Site 3), Kalkspruit (Site 4) and Koninggratz (Site 5).

This HIA forms part of the Environmental Impact Assessment (EIA) as required by the Environmental Conservation Act (ECA) 73 of 1989, the Minerals Act, 50 of 1991 and the Development Facilitation Act (DFA), 67 of 1995. The HIA is performed in accordance with section 38 of the National Heritage Resources Act (NHRA), 25 of 1999 and is intended for submission to the South African Heritage Resources Agency (SAHRA).

Location

The proposed sites are all located on existing developed transmission sites.

The specific locations of the sites are indicated by GPS readings.

Fieldwork

Members of AINP met with Mr. T. Kotze during February 2001 on site. Following this the survey was performed by a professional archaeologist assisted by a fieldworker.

The extent of the sites was determined as well as the extent of the areas to be affected by secondary activities during the construction of the masts. Sites were plotted with GPS readings and photographed using colour prints in 100 ASA format. All sites apart from those directly beside the road were surveyed on foot.

Methodology

The area was surveyed using standard archaeological surveying methods. The area was surveyed using directional parameters supplied by the GPS and surveyed by foot.

Standard archaeological documentation formats were employed in the description of sites. Using standard site documentation forms as comparable medium, it enabled the surveyors to evaluate the relative importance of sites found. Furthermore GPS (Global Positioning System) readings of all finds and sites were taken. This information was then plotted using a *Magellan 2000 XL* GPS (*Cape datum*).

Indicators such as surface finds, plant growth anomalies, local information and topography were used in identifying sites of possible archaeological importance. Test probes were done at intervals to determine sub-surface occurrence of archaeological material. The importance of sites was assessed by comparisons with published information as well as comparative collections. All sites or possible sites found were classified using a hierarchical system wherein sites are assessed using a scale of zero to four according to their importance. These categories are as follows:

Degree of significance	Justification	Score
Exceptional significance	Rare or outstanding, high degree of intactness. Can be interpreted easily.	4
High significance	High degree of original fabric. Demonstrates a key element of item's significance. Alterations do not detract from significance.	3
Moderate significance	Altered or modified elements. Element with little heritage value, but which contribute to the overall significance.	2
Little significance	Alterations detract from significance. One of many. Alterations detract from significance.	1
Intrusive	Damaging to the item's heritage significance.	0

Cultural Importance and Oral History

The investigation of site for heritage components should not only look at the material remains that are found on sites, but there should also be looked at the intangible aspects of cultural importance for the local communities. Furthermore there should also be looked at the possibility of culturally important areas being found in the study area. These could include graves, places of power or initiation schools and any other area that is seen as culturally sensitive to the local communities.

None such sites were identified during the study.

The Sites

After extensive investigations, both on the surface and subterranean, no indication could be found to suggest that any sites of cultural or historical value was or is present in the proposed area to be developed for the weir.

SITE 1

Roofrant.

GPS: 23° 05' 07" S

28° 27' 33" E

The proposed Telkom mast on this site will measure 56 m in height. This site is already developed and a *Sentek* mast exists on it (photo 1). All possible finds were therefor destroyed or damaged during the original development.

SITE 2

Tafelkop.

GPS: 23° 37' 54" S

27° 57' 40" E

The proposed Telkom mast on this site will measure 56 m in height. As with the previous site, this site is already developed and an Air Force radar station exists on it (photo 2). All possible finds were therefor destroyed or damaged during the original development.

SITE 3

24 Riviere.

GPS: 23° 36' 16" S

28° 46' 45" E

The proposed Telkom mast on this site will measure 56 m in height. As with the previous sites, this site is already developed with an existing Telkom mast on it (photo 3). All possible finds were therefor destroyed or damaged during the original development.

SITE 4

Kalkspuit.

GPS: 23° 46' 18" S

29° 09' 30" E

The proposed Telkom mast on this site will measure 56 m in height. As with the previous site, this site is already developed with an existing Telkom mast on it (photo 4). All possible finds were therefor destroyed or damaged during the original development.

SITE 5

Koniggratz

GPS: 23° 19' 50" S

29° 11' 57" E

The proposed Telkom mast on this site will measure 56 m in height. As with the previous site, this site is already developed with an existing Telkom mast on it (photo 5). All possible finds were therefore destroyed or damaged during the original development.

Recommendations

All 5 sites involve are already developed and any possible finds were destroyed or damaged during the original development. No sites of cultural or historical value were identified in the proposed area and it is the conclusion of AINP that the development can continue.

Conclusion

A heritage impact assessment was performed on 5 sites, namely Rooirant, Tafelkop, 24 Riviere, Kalkspruit and Koniggratz were proposed Telkom microwave masts are to be erected.

From a cultural heritage perspective the construction can continue.

References

1. Hammond-Tooke, W.D. 1981. *Boundaries and Belief: The structure of a Sotho worldview*. Johannesburg: Witwatersrand University press.
2. Huffman, T.N. and Steel, R.H. 1996. *Salvage excavations at Planknek, Potgietersrus, Northern Province*. Southern African Field Archaeology, 5: 45-58.
3. Loubser, J.H.N. 1994. *Ndebele archaeology of the Pietersburg area*. Navorsinge van die Nasionale Museum Bloemfontein. 10(2): 61-147.

ADDENDUM A

PHOTOGRAPHS

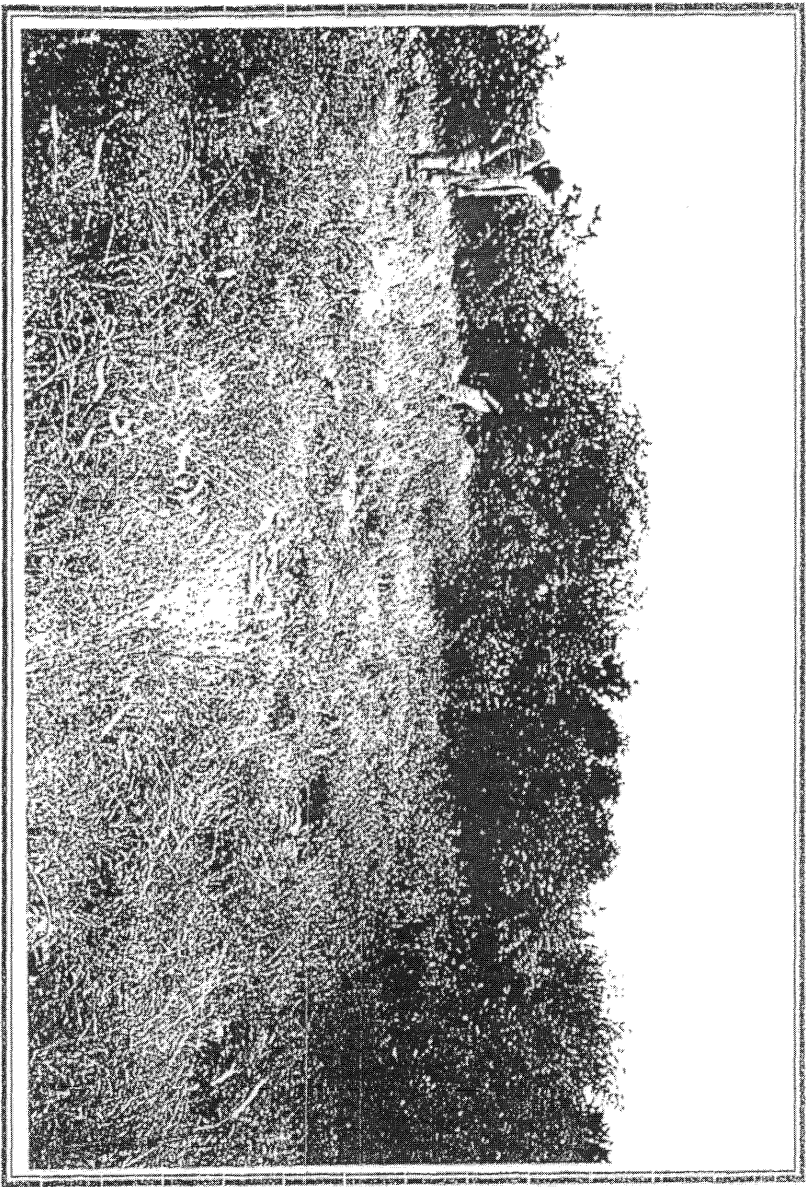


Photo 1. Site 1 (Rooiran).

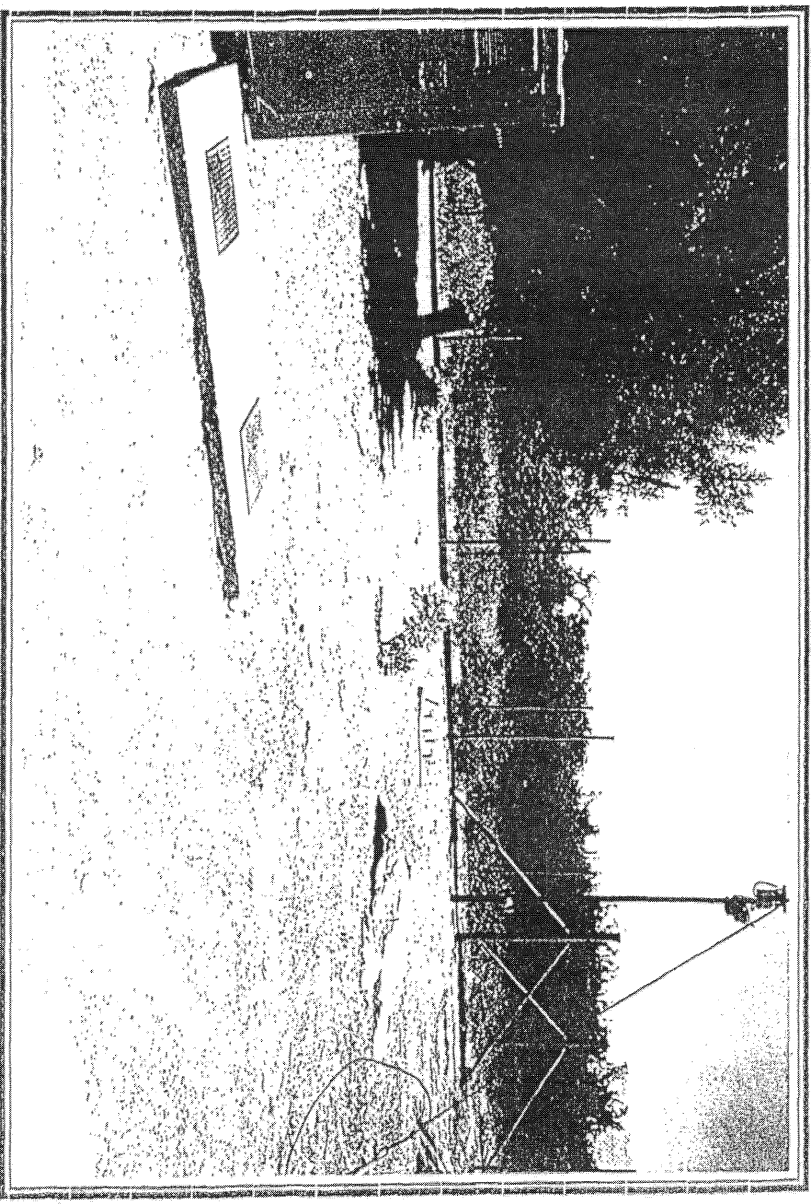


Photo 2. Site 2 (Tafelkop).

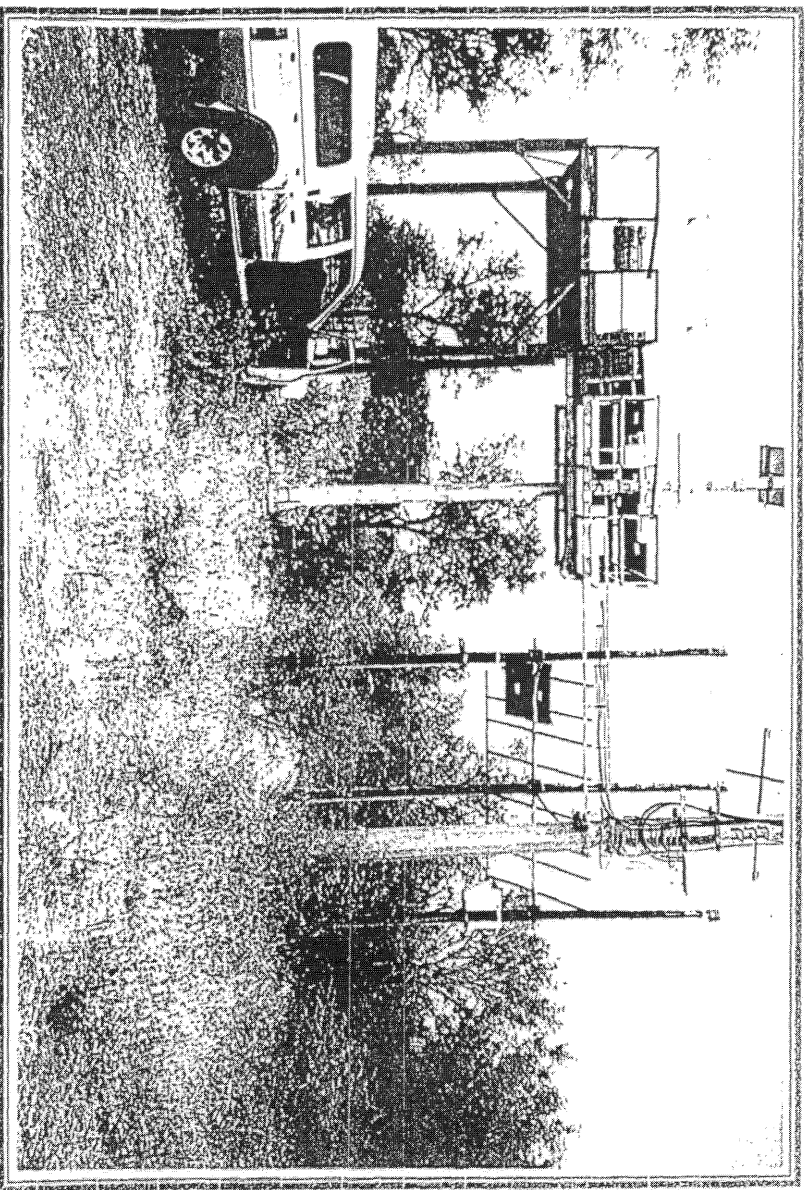


Photo 3. Site 3 (24 Riviero). Existing Telkom mast.

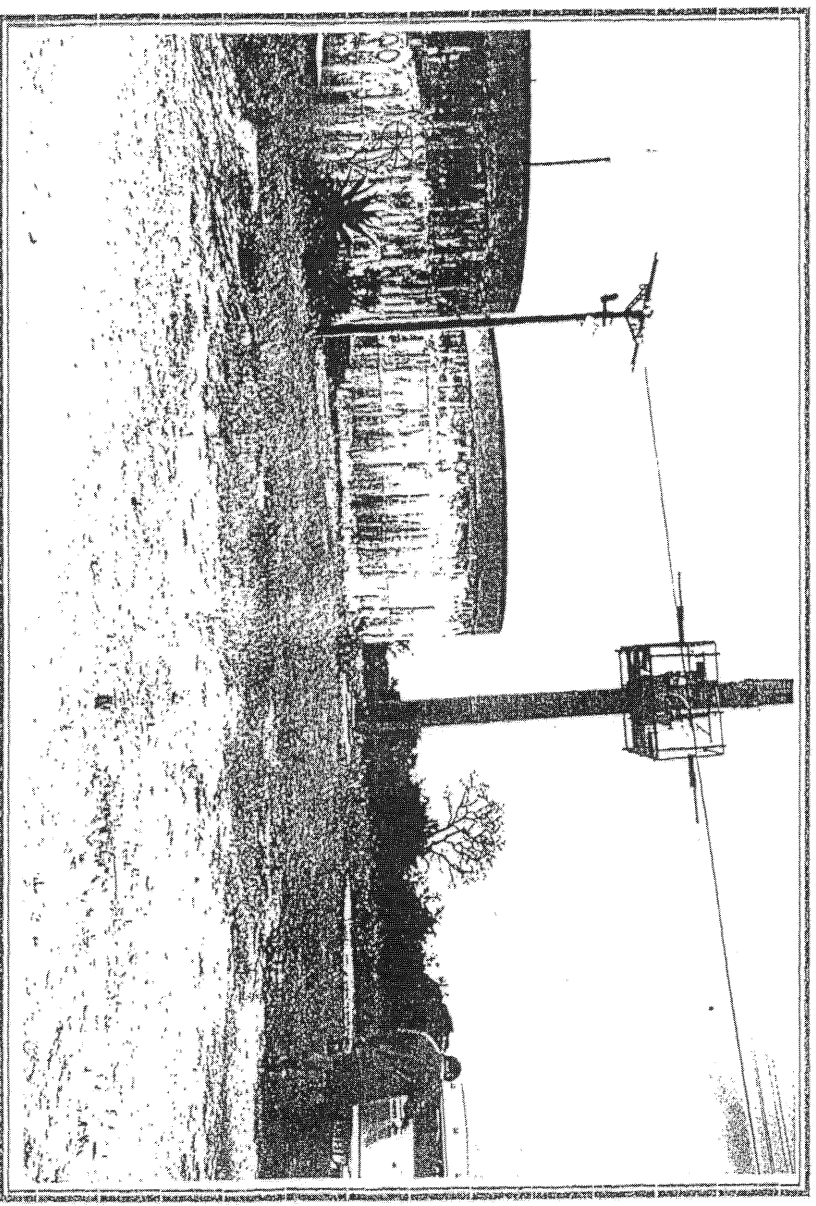


Photo 4. Site 4 (Kalkspruit). Existing Telkom mast.

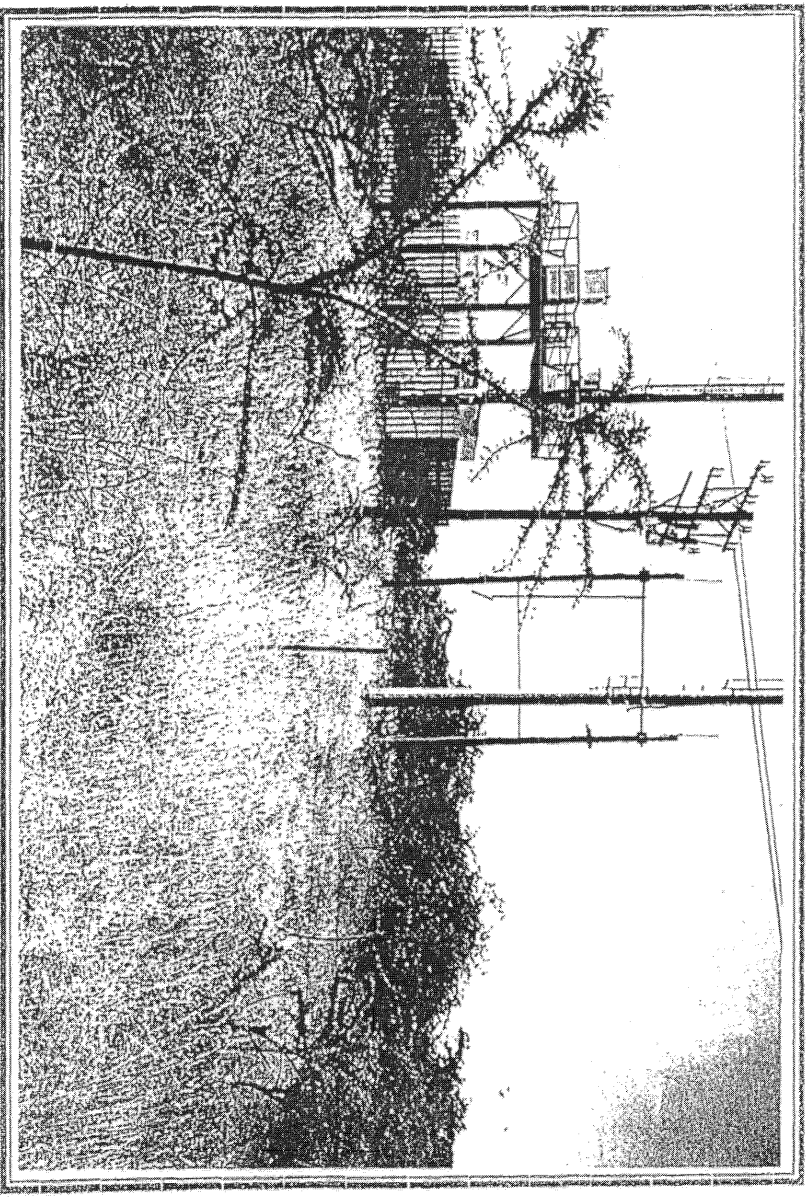


Photo 5. Site 5 (Koniggratz). Existing Telkom mast.