

9/2/269/0001

Recvd: 24.11.2007

Prepared for:

LANDSCAPE DYNAMICS

ESKOM NORTHERN REGION

**A PHASE I HERITAGE IMPACT ASSESSMENT (HIA) STUDY
FOR THE PROPOSED NEW NESENGANI SUBSTATION ON
THE FARM WELTEVREDEN 23 IN THE LIMPOPO PROVINCE
OF SOUTH AFRICA**

Prepared by:

Dr Julius CC Pistorius

Archaeologist and Heritage

Management Consultant

352 Rosemary Street

Lynnwood 0081

Pretoria

Tel and fax 012 3485668

Cell 0825545449

July 2007

Member ASAPA

EXECUTIVE SUMMARY

A Phase I Heritage Impact Assessment (HIA) study as required in terms of Section 38 of the National Heritage Resources Act (Act 25 of 1999) was done for Eskom's proposed new Nesengani Substation on Weltevreden 23 near Elim in the Limpopo Province of South Africa. The aims with the Phase I HIA study was to establish whether any of the types and ranges of heritage resources ('national estate') as outlined in the National Heritage Resources Act (Act 25 of 1999) do occur in or near the proposed new Nesengani Substation that may be affected by the construction of the new proposed substation.

The Phase I HIA study for the proposed new Nesengani Substation revealed none of the types and ranges of heritage resources as outlined in Section 3 of the National Heritage Resources Act (No 25 of 1999).

There is consequently no reason from a heritage point of view why Eskom should not continue with the construction of the Nesengani Substation.

CONTENTS

Executive summary	2
1 INTRODUCTION	4
2 THE PROJECT AREA	5
3 METHODOLOGY	6
3.1 Assumptions and limitations	6
3.2 Chance finds	6
4 THE PHASE I HERITAGE IMPACT ASSESSMENT STUDY	7
5 CONCLUSION AND RECOMMENDATIONS	8

1 INTRODUCTION

Eskom intends to construct the proposed new Nesengani Substation on the farm Weltevreden 23 near Elim in the Limpopo Province of South Africa.

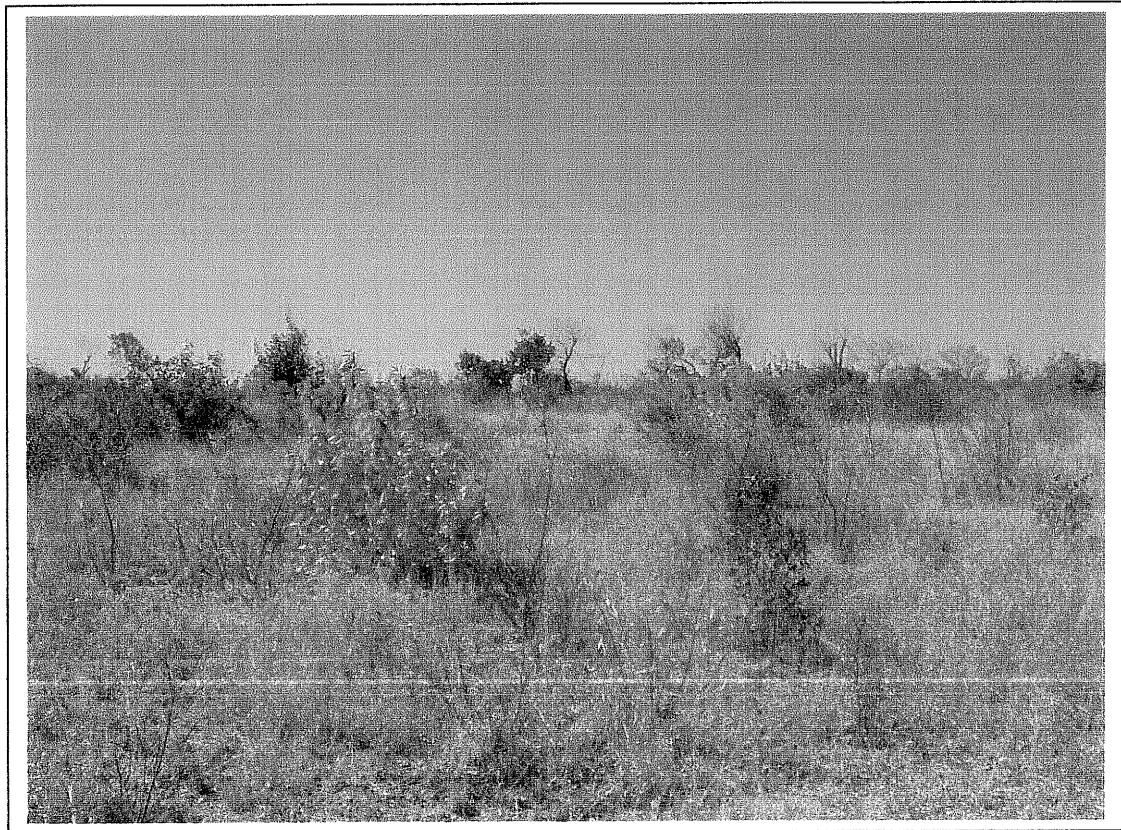
As the construction of the proposed new Nesengani Substation may have an impact on heritage resources in or near the proposed new substation Eskom commissioned the author to undertake a Phase I Heritage Impact Assessment (HIA) study for the proposed new Nesengani Substation with the following aims:

- To establish whether any of the types and ranges of heritage resources as outlined in Section 3 of the National Heritage Resources Act (Act 25 of 1999) occur in or near the existing Nesengani Substation, and if so, to establish the significance of these heritage resources.
- To establish whether such heritage resources may be affected by the expansion of the Nesengani Substation, and if so, to determine possible mitigation measures that can be applied to these heritage resources.

2 THE PROJECT AREA

The Nesengani Substation is located on an undisturbed piece of land on the farm Weltevreden 23 near Elim in the Limpopo Province of South Africa. The substation will be established in a wooded area on a soft slope some distance to the south of the Luvuvhu River near the town of Tshino in which the Tshino Substation is located (Ratombo 2330AA; 1: 50 000).

Figure 1- The proposed stand for the Nesengani Substation near the village of Tshino in the Limpopo Province. The substation will be located in a wooded area on a slight slope to the south of the Luvuvhu River (below).



3 METHODOLOGY

This Phase I HIA study was conducted by means of the following:

- Surveying the Nesengani Substation and surrounding areas on foot.
- Consulting maps of the Nesengani Substation as well as its peripheral areas.
- Consulting archaeological (heritage) data bases such as the ones kept at the Limpopo Provincial Heritage Resources Agency as well as at Museum Africa in Pretoria (Tshwane).
- Synthesising all information obtained from the literature survey, maps and data bases with the evidence derived from the fieldwork in this report.

3.1 Assumptions and limitations

It is possible that this Phase I HIA study may have missed heritage resources as these may lie below the surface of the earth and may only be exposed once development commences.

3.2 Chance finds

If any heritage resources of significance is exposed during the construction of the Nesengani Substation, the South African Heritage Resources Authority (ASAPA) should be notified immediately, all construction activities must be seized and an archaeologist accredited with the Association for Southern African Professional Archaeologist (ASAPA) should be notify in order to determine appropriate mitigation measures for the discovered finds. This may include obtaining the necessary authorisation (permits) from SAHRA to conduct the mitigation measures.

4 THE PHASE I HERITAGE IMPACT ASSESSMENT STUDY

The Phase I HIA study for the Nesengani Substation revealed none of the types and ranges of heritage resources as outlined in Section 3 of the National Heritage Resources Act (No 25 of 1999).

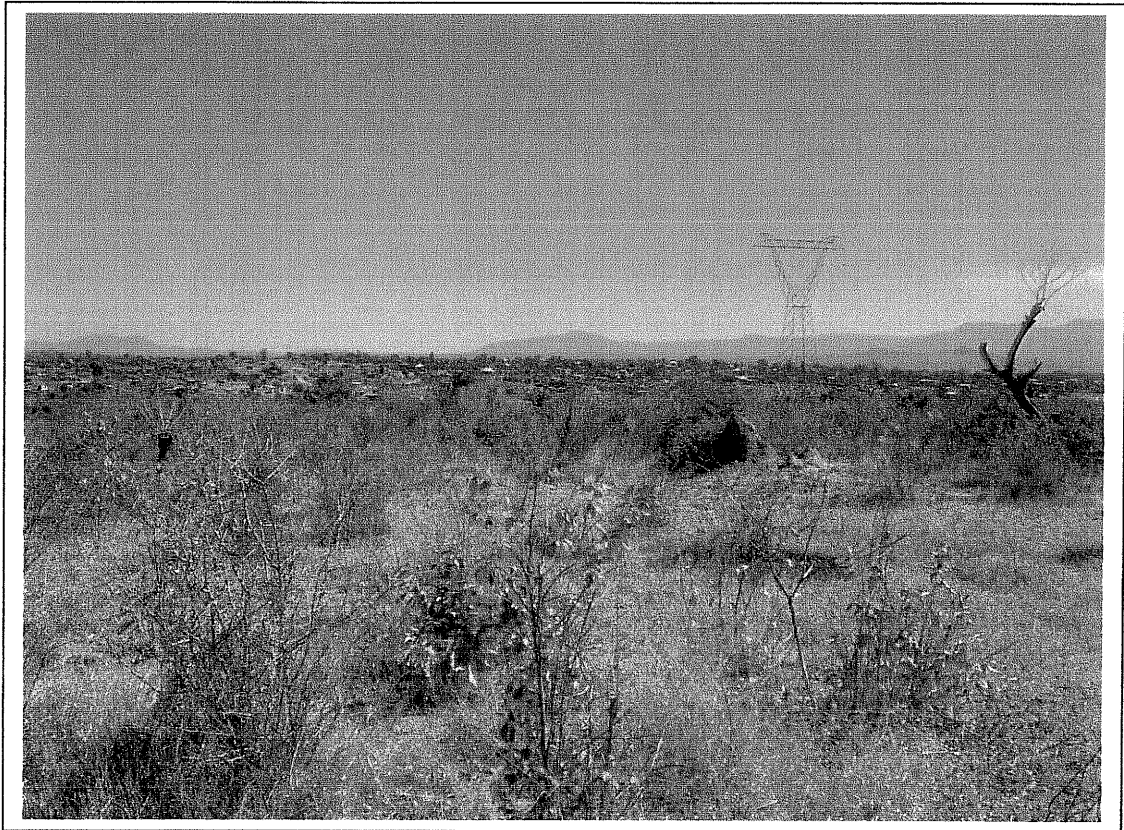
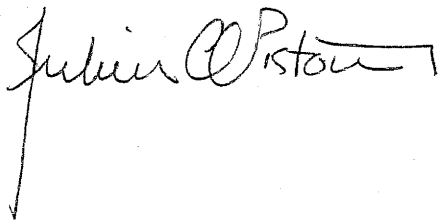


Figure 2- The Phase I survey for the construction of the Nesengani Substation revealed none of the types and ranges of heritage resources as outlined in Section 3 of the National Heritage Resources Act (No 25 of 1999).

5 CONCLUSION AND RECOMMENDATIONS

The Phase I HIA study for the Nesengani Substation revealed none of the types and ranges of heritage resources as outlined in Section 3 of the National Heritage Resources Act (No 25 of 1999).

There is consequently no reason from a heritage point of view why Eskom should not continue with the construction of the Nesengani Substation.

A handwritten signature in black ink that reads "Julius CC Pistorius". The signature is written in a cursive style with a long vertical line extending downwards from the end of the name.

Dr Julius CC Pistorius
Archaeologists &
Heritage Management Consultant

**ENVIRONMENTAL IMPACT ASSESSMENT
SCOPING REPORT
ESKOM NESENGANI SUBSTATION
AND 132KV LOOP IN LOOP OUT LINE
12/12/20/990**

*(proposed on the farm Schuynshoogte 29LT (Rem)
near the town Levubu in the Makhado Local Municipality,
in the Vhembe District Municipality in the Limpopo Province)*

Nesengani Substation was previously referred to as Tshino Substation

Compiled by :



**Landscape Dynamics Environmental Consultants
PO Box 947
GROENKLOOF
Pretoria
0027
Tel (012) 460 6043
Fax (012) 346 2356**

Applicant :

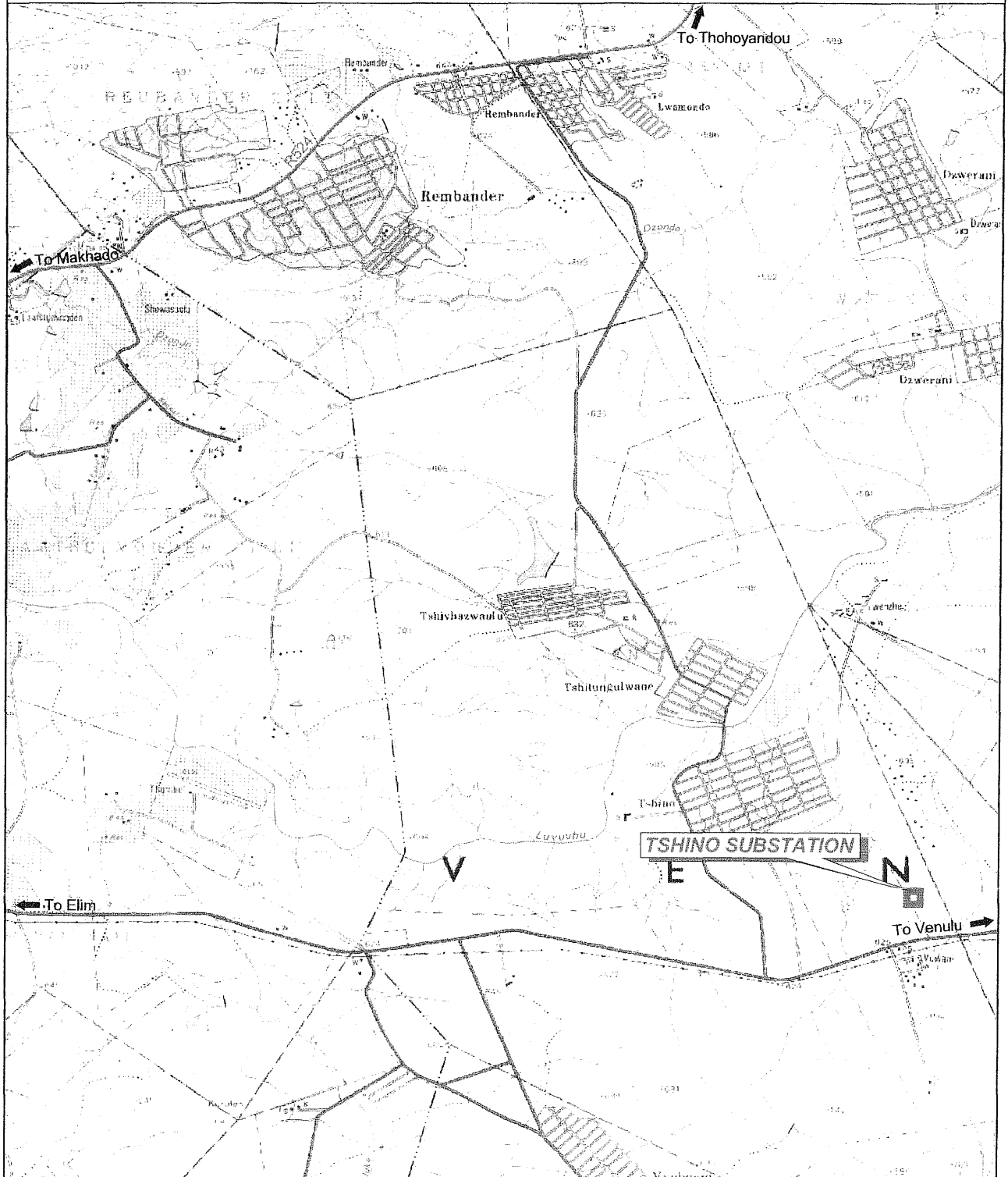
**Eskom Distribution Northern Region
PO Box 3499
POLOKWANE
0700
Khathu Rhamatsea
Tel (015) 962 7800
Fax (015) 295 7550**

LOCALITY MAP: TSHINO SUBSTATION



Environmental Impact Assessment Process, undertaken by
Landscape Dynamics Environmental Consultants

Scale 1 : 60 000



Adapted from 1 : 50 000 topographical map 2230CD, 2230CC, 2330AA and 2330AB

Date: 5 July 2007 / U Naudé