



# **AFRICAN HERITAGE CONSULTANTS CC**

2001/077745/23

**DR. UDO S KÜSEL**

Tel/fax: (012) 567 6046

Cell: 082 498 0673

E-mail: udo.heritage@absamail.co.za

P.O. Box 652

Magalieskruin

0150

---

1 December 2006

## **CULTURAL HERITAGE RESOURCES IMPACT ASSESSMENT OF THE FARM KAALPLAATS VANDERBIJLPARK GAUTENG**

### **1. DEFINITION**

The broad generic term *Cultural Heritage Resources* refers to any physical and spiritual property associated with past and present human use or occupation of the environment, cultural activities and history. The term includes sites, structures, places, natural features and material of palaeontological, archaeological, historical, aesthetic, scientific, architectural, religious, symbolic or traditional importance to specific individuals or groups, traditional systems of cultural practice, belief or social interaction.

### **2. PROTECTED SITES IN TERMS OF THE NATIONAL HERITAGE RESOURCES ACT, ACT NO. 25 OF 1999**

The following are the most important sites and objects protected by the National Heritage Act:

- 2.1 Structures or parts of structures older than 60 years.
- 2.2 Archaeological sites and objects.
- 2.3 Palaeontological sites.
- 2.4 Meteorites.
- 2.5 Ship wrecks.
- 2.6 Burial grounds.
- 2.7 Graves of victims of conflict.
- 2.8 Public monuments and memorials.
- 2.9 Structures, places and objects protected through the publication of notices in the Gazette and Provincial Gazette.

- 2.10 Any other places or object, which are considered to be of interest or of historical or cultural significance.
- 2.11 Geological sites of scientific or cultural importance.
- 2.12 Sites of significance relating to the history of slavery in South Africa.
- 2.13 Objects to which oral traditions are attached.
- 2.14 Sites of cultural significance or other value to a community or pattern of South African history.

### **3, METHODOLOGY**

The site was visited and inspected on foot. All appropriate documents on the area were studied.

### **4. RESULTS**

The proposed development area lies near the Vaal River on a small koppie with typical highveld grassland, and some trees. Near the foot of the koppie is a cattle kraal and some modern farm workers houses. The flat area just north of the koppie was an alluvial diamond digging area, which the present farmer has levelled and now uses for the planting of crops. Nothing visible has remained of the alluvial diamond diggings.

On the koppie itself a few Late Stone Age cores and flakes have been found scattered over a large area in small numbers at S26°45' 05.3" and E27° 40' 56.1". This Late Stone Age material is of little or no scientific value as it is lying on open and exposed ground and is out of context (see map and photographs).

No oral history on the sites has been recorded, as the present farmer is a relative new owner. The farm labourers also know nothing of the history of the place.

### **5. CONCLUSION**

There are no important visible cultural heritage resources on the proposed development area on the farm Kaalplaats. The Late Stone Age material is out of context and not worth collecting or recording.

### **6. RECOMMENDATION**

There is no objection to the development of the area from a cultural heritage point of view.

### **7. REFERENCE**

1/50 000 Maps 2627DC and 2627DA

## PHOTOGRAPH



**Late Stone Age cores and flakes**

## DEVELOPMENT DATA

### **Contact details of owner / developer:**

Mr. H. Storm

PO Box 13714  
Zuurfontein  
1912

Tel/fax: 016 987 2311

Cel: 082 416 6389

### **Contact details of consultant:**

Vaal Town & Regional Planners  
18 Rembrandt Street  
Sasolburg  
1947

Tel/fax: 016 973 2890

Cel: 083 946 9700 (Pieter Zwiegelaar)

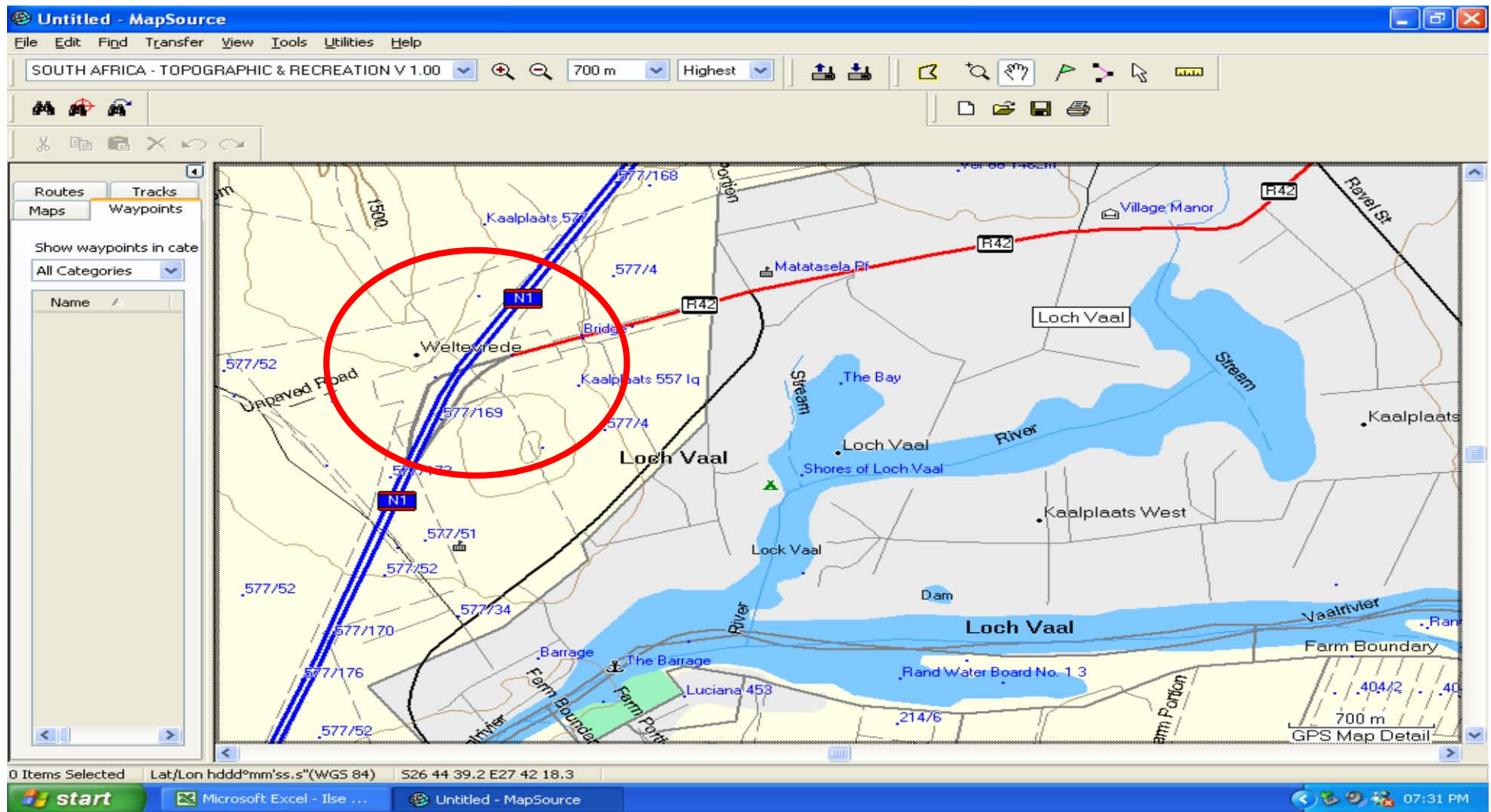
e-mail: [pieter.zwiegelaar@wotron.co.za](mailto:pieter.zwiegelaar@wotron.co.za)

### **Type of development:**

Residential estate (holiday and weekend houses)  
No re-zoning will take place.

**Full Location:**

Province: Gauteng  
Magisterial district: Emfuleni Local Municipality  
(Letitia Coleman 016 450 3063)  
Local authority: Emfuleni Local Municipality  
Farm name: The remainder of portion 4 of the  
farm Kaalplaats 577 IQ  
  
1:50 000 maps: 2627DC Weiveld (top right) &  
2627DA Lideques Drif (bottom right)



Kaalplaats 577IQ Map 2627DA Lindequesdrif

