



COBUS DREYER

Pr. Archaeologist/Heritage Specialist

**P.O. Box 12910
BRANDHOF 9324
Bloemfontein
dreyerj@telkomsa.net**

**Tel: 051-444 1187
Fax: 051-444 4395
Cell: 083 357 7982**

25 MAY 2006

FIRST PHASE ARCHAEOLOGICAL AND CULTURAL HERITAGE ASSESSMENT OF THE PROPOSED RESIDENTIAL DEVELOPMENTS AT DAMASCUS 24, CLARENS, FREE STATE

INVESTIGATION

The site for the planned residential developments at the farm Damascus 24 near Clarens, was visited on 9 February 2006 in the company of Dr Johan du Preez of MDA Environmental Consultants, Bloemfontein, and Jako Viviers of LMV Environmental Specialists, Kroonstad.

The land was examined for possible archaeological and historical material and to establish the potential impact on any cultural material that might be found. The Heritage Impact Assessment (HIA) is done in terms of the National Heritage Resources Act (NHRA), (25 of 1999) and under the Environmental Conservation Act, (73 of 1989).

LOCALITY

Residential developments are planned on Portion 2 of the farm Damascus 24 near Clarens in the district of Fouriesburg, Free State (Map 1).

The farm lies to the south of Clarens along the main road to Fouriesburg (Map 2). (Surveyor-General O.F.S. 1973).

The following GPS co-ordinates (Cape scale) were taken (2828CB).

Proposed site 28°36'37"S 028°23'51"E Altitude 1944m (Figs.1-5).

Trig beacon DA-US 173 28°36'33"S 028°23'47"E Altitude 1954m.

The area is grass covered between the rocky outcrops on the hill (Figs.2&4). The vegetation is described as Afro Mountain Moist Grassland.

FINDS

The residential developments will be erected on the high rocky outcrop of the hill (Figs.4&5).

The area does not contain any cultural or historical material.

No indication of any archaeological or historical material was found on the surface neither were any stone tools or ceramic ware found.

RECOMMENDATIONS

There is no reason to delay the commencement of further planning and development of the site.

I recommend that the proposed developments may proceed.

MITIGATION

Concerning the area for the proposed development, no mitigation measures are needed.

ACKNOWLEDGEMENTS

I thank Dr Johan du Preez and Jako Viviers for taking me to the site.

SELECT BIBLIOGRAPHY:

DEACON, J. 1992. Archaeology for Planners, Developers and Local Authorities. Cape Town: National Monuments Council.

DREYER, J. 1996. Introduction to Free State Iron Age Archaeology. In: Guide to archaeological sites in the Free State and Lesotho. Southern African Association of Archaeologists (SA3), 14th Biennial Conference, Bloemfontein, Post-conference tour 5-8 July 1996. Bloemfontein: National Museum.

DREYER, J. 2000. Mountains and Rivers of the Free State - Manual for field research / Berge en Riviere van die Vrystaat – Handleiding vir veldnavorsing. Bloemfontein: University of the Free State, Department of Anthropology, Occasional Paper No. 2.

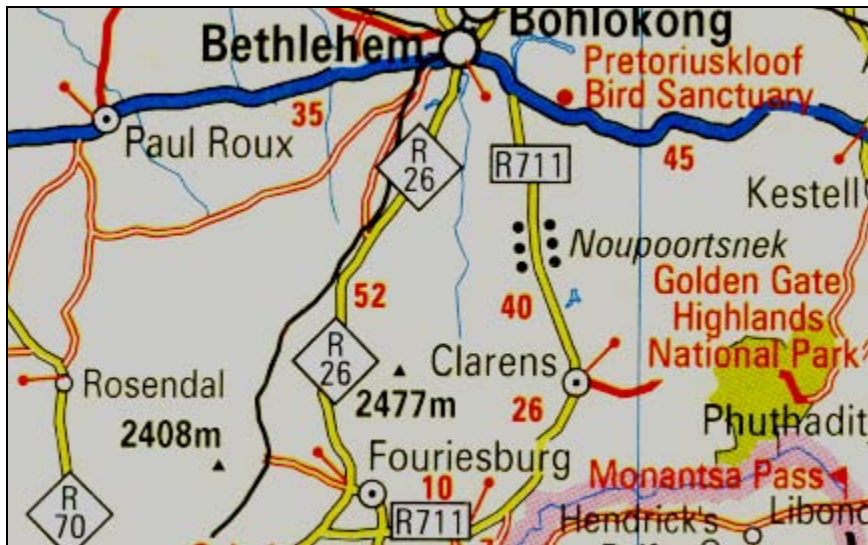
HUMPHREYS, A.J.B. 1986. Searching for the past. Cape Town: David Philip.

MAGGS, T.M. 1976. Iron Age Communities of the Southern Highveld. Pietermaritzburg: Natal Museum.

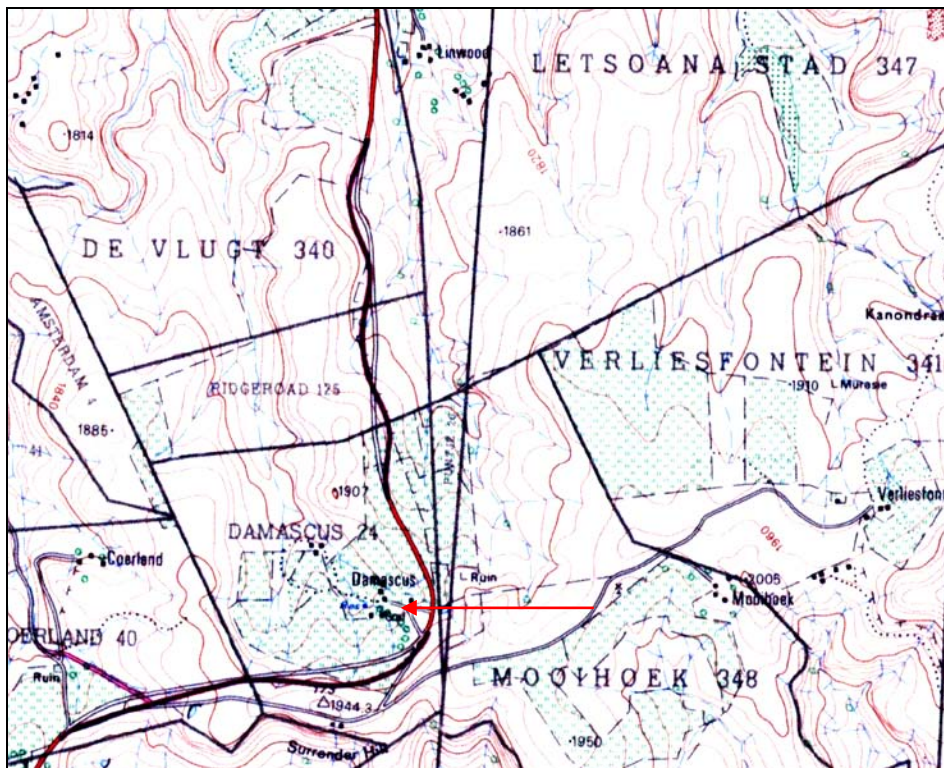
PISTORIUS, J.C.C. 1994. Eskom Archaeological Site Identification Guide. Johannesburg: Eskom.

SURVEYOR-GENERAL O.F.S. 1973. Index of Orange Free State Farms. Bloemfontein.

LIST OF ILLUSTRATIONS:



Map 1 Locality of Clarens in relation to Fouriesburg, Bethlehem and Golden Gate.



Map 2 Locality of the farm Damascus 24, Clarens, along the R711 road to Fouriesburg (2827BB).



Fig.1 View of the development area at Damascus 24, Clarens.



Fig.2 View of the development area at Damascus 24, Clarens.



Fig.3 The development area on the farm Damascus 24, Clarens.



Fig.4 View from the development area at Damascus 24, Clarens.



Fig.5 View from the development area at Damascus 24, Clarens.