



# **COBUS DREYER**

**Pr. Archaeologist/Heritage Specialist**

**P.O. Box 12910  
Brandhof  
9324  
dreyerj@telkomsa.net**

**Tel: 051-444 1187  
Fax: 051-444 4395  
Cell: 083 357 7982**

9 November 2005

## **ARCHAEOLOGICAL AND HISTORICAL INVESTIGATION OF THE PROPOSED RESIDENTIAL DEVELOPMENTS ON A PORTION OF THE FARM KOEBERG 1663, CLARENS, FREE STATE**

### **INVESTIGATION**

Two areas were selected for residential developments on a portion of the farm Koeberg 1663, Clarens, Free State. The farm was visited and inspected on 8 November 2005. I was accompanied by Dr Johan du Preez of MDA/Cebo Environmental Consultants, Bloemfontein. At the farm, Mr Ralph Burls and his son Gavin explained their plans and took us to the different sites.

The area was examined for possible archaeological and historical remains and to establish the potential impact on any cultural material that might be found. The Heritage Impact Assessment (HIA) is done in terms of the National Heritage Resources Act (NHRA), (25 of 1999) and under the Environmental Conservation Act, (73 of 1989).

### **LOCALITY**

The proposed residential developments are planned on two portions of the farm Koeberg 1663 near Clarens in the district of Bethlehem (Surveyor-General O.F.S. 1973) (Map 1). The land borders on the road to Golden Gate Highlands National Park (Map 2) (2828BC).

The two sites are designated as Koeberg 1 and Koeberg 2 by the developers.

The following GPS coordinates (Cape scale) were taken:

Koeberg 1	28°29'41"S 028°31'49"E Altitude 1823m (Figs.1-3).
Koeberg 2	28°30'13"S 028°31'56"E Altitude 1800m (Figs.4-6).
Graveyard	28°29'45"S 028°32'06"E Altitude 1793m (Figs.7&8).

## **FINDS**

The site was surveyed on foot in search for cultural and building remains and archaeological material.

The areas proposed for residential developments is part of agricultural land that had been grazed and cultivated for many years and do not contain any archaeological, cultural or historical remains.

No indication of any archaeological or historical material was found on the surface neither were any stone tools or ceramic ware found.

Some distance from the areas selected for development there is an old graveyard containing about 12 graves (Fig.7). Only one of the gravestones is inscribed and have the following inscription (Fig.8):

Susanna Helena Johanna Vorster  
\*23/10/1880 †26/2/1889

Fredrik Jacobus Vorster  
\*20/10/1893 †10/1/1894

JL & CM Vorster

The graveyard is not part of the present developments and will not be affected in any way.

## **RECOMMENDATIONS**

No obvious reasons could be found to delay the commencement of further planning and development of the site.

After examination by the archaeologist, it is recommended that the proposed developments may proceed.

## **MITIGATION**

Concerning the area for the proposed development, no mitigation measures are needed.

## **ACKNOWLEDGEMENTS**

I thank Dr Johan du Preez of MDA/Cebo Environmental Consultants for taking me to the site. I also owe gratitude to the Burls family for their hospitality during out visit to their farm.

## **SELECT BIBLIOGRAPHY:**

DEACON, J. 1992. Archaeology for Planners, Developers and Local Authorities. Cape Town: National Monuments Council.

DREYER, J. 2000. Mountains and Rivers of the Free State - Manual for field research / Berge en Riviere van die Vrystaat – Handleiding vir veldnavorsing. Bloemfontein: University of the Free State, Department of Anthropology, Occasional Paper No. 2.

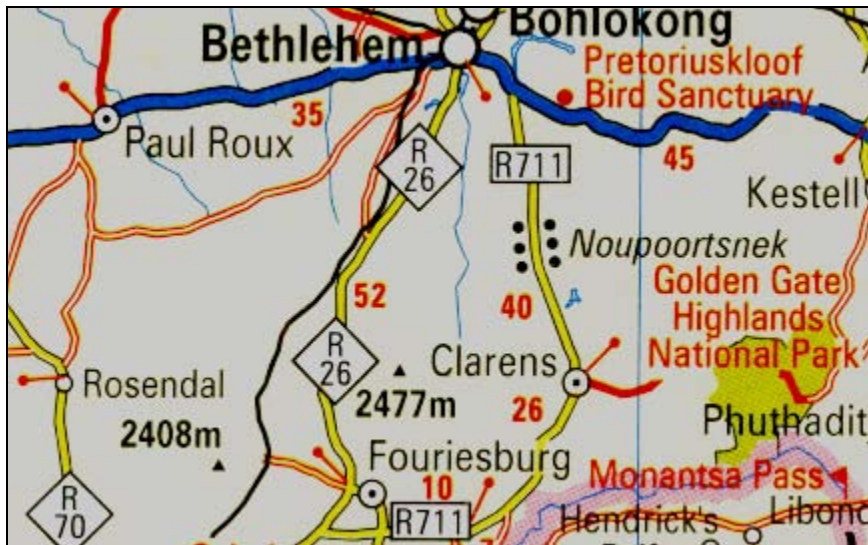
HUMPHREYS, A.J.B. 1986. Searching for the past. Cape Town: David Philip.

MAGGS, T.M. 1976. Iron Age Communities of the Southern Highveld. Pietermaritzburg: Natal Museum.

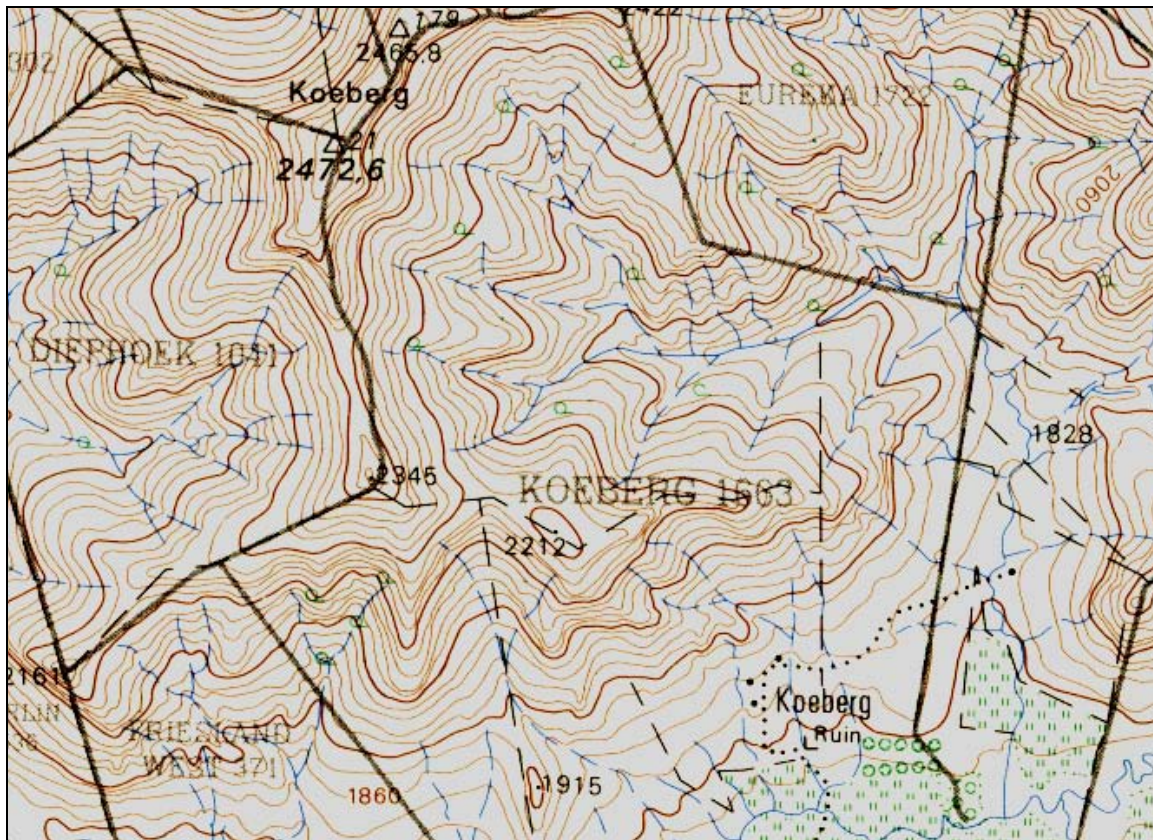
PISTORIUS, J.C.C. 1994. Eskom Archaeological Site Identification Guide. Johannesburg: Eskom.

SURVEYOR-GENERAL O.F.S. 1973. Index of Orange Free State Farms. Bloemfontein.

**LIST OF ILLUSTRATIONS:**



Map 1 Locality of Clarens in relation to Fouriesburg, Bethlehem and Golden Gate.



Map 2 The locality of the farm Koeberg 1663 to the east of Clarens (2828BC).





Fig.1 View at the area designated as Koeberg 1.



Fig.2 A view up the slope at Koeberg 1.



Fig.3 Picturesque view at the mountain from Koeberg 1.



Fig.4 View at Koeberg 2 from Koeberg 1 facing east



Fig.5 A general view across Koeberg 2.



Fig.6 View from Koeberg 2.





Fig.7 The only inscribed grave stone at Koeberg 1663, Clarens.



Fig.8 View down the slope towards the stream in the kloof.