



# **COBUS DREYER**

**Pr. Archaeologist/Heritage Specialist**

**P.O. Box 12910  
BRANDHOF 9324  
Bloemfontein  
dreyerj@telkomsa.net**

**Tel: 051-444 1187  
Fax: 051-444 4395  
Cell: 083 357 7982**

29 JUNE 2006

## **FIRST PHASE ARCHAEOLOGICAL AND CULTURAL HERITAGE ASSESSMENT OF THE PROPOSED RESIDENTSIAL DEVELOPMENTS ON THE FARM LETSOANASTAD 347 (ST. FORT), CLARENS, FREE STATE**

### **INVESTIGATION**

The area selected for residential developments on the farm Letsoanastad 347 (St. Fort), Clarens, Free State, was visited on 6 December 2005, 31 March 2006 and 1 April 2006. I was accompanied by Dr Johan du Preez of MDA Environmental Consultants, Bloemfontein and Jako Viviers of LMV Environmental Specialists, Kroonstad. At the farm, the owner, Mr Brad Goldblatt accompanied us to the different sites.

The area was examined for possible archaeological and historical remains and to establish the potential impact on any cultural material that might be found. The Heritage Impact Assessment (HIA) is done in terms of the National Heritage Resources Act (NHRA), (25 of 1999) and under the Environmental Conservation Act, (73 of 1989).

### **LOCALITY**

The proposed residential developments are planned on the farm Letsoanastad 347 (St. Fort), Clarens in the district of Fouriesburg (Surveyor-General O.F.S. 1973) (Map 2). The land borders on the R711 road from Clarens to Fouriesburg (Fig.1).

The vegetation consists of a thick grass cover and is described as moist afro-mountain grassland (Fig.3).

The following GPS coordinates (Cape scale) were taken (2828CB):

### **SITE A**

High point	28°34'19"S 028°25'36"E Altitude 1805m (Fig.).
	28°34'20"S 028°25'38"E Altitude 1791m (Fig.).
Sand stone outcrop	28°34'17"S 028°25'36"E Altitude 1791m (Fig.).
Stone-wall	28°34'29"S 028°25'39"E Altitude 1813m (Fig.).
Stone structures	28°34'34"S 028°25'41"E Altitude 1820m.
Stone building Appelkoos	28°34'36"S 028°25'41"E Altitude 1815m.
Southern limit	28°34'37"S 028°25'41"E Altitude 1814m (Fig.)

## **SITE B**

East	28°34'28"S 028°26'06"E Altitude 1799m (Fig.).
West	28°34'31"S 028°25'58"E Altitude 1794m (Fig.).
Old farm house	28°33'37"S 028°24'57"E Altitude 1714m (Fig.).
Fossil	28°33'58"S 028°25'20"E Altitude 1627m (Fig.).
West	28°34'31"S 028°25'58"E Altitude 1794m (Fig.).
West	28°34'31"S 028°25'58"E Altitude 1794m (Fig.).
West	28°34'31"S 028°25'58"E Altitude 1794m (Fig.).

## **HISTORICAL BACKGROUND TO LETSOANASTAD**

### **LETSOANASTAD 347**

ALT Lesaoana/Groendraai

DISTRICT Fouriesburg

DESCRIPTION Farm

MAP 1:250 000 GR5B 2828 Harrismith

CO-ORD S.28°34' E.28°25'

REF1 Webb 1950:26 "Lesaoana."

REF2 Webb 1950:14 Groendraai

REF3 Van Rensburg 1968:83-138

Ellenberger 1912:373

According to Ellenberger (1912:373), there was a man in the Taung decent called Abisai Lesaoana, the son of Maqalika and grandson of Motsoasele and

great-grandson of Mosolotsana, who was one of the five sons of Montueli (Ramokhele). Probably this man Lesaoana lived at Letsoanastad (Van Rensburg 1968).

Cannibals who fed the victims prey in pens

## **FINDS**

The site was surveyed on foot in search of cultural and building remains and archaeological material.

The areas proposed for residential developments is part of agricultural land and grazing land. The site does not contain any archaeological, cultural or historical remains.

No indication of archaeological or historical material was found on the surface neither were any stone tools or ceramic ware found.

De Molen derives its name from an old water mill that used to be on the farm. The mill has now been destroyed beyond repair (Figs.11-12) and the only evidence of its existence is represented a millstone (Fig.13) and part of the water wheel (Fig.14).

An old graveyard containing about 9 graves (Figs.15-16) is located near the farmhouse. Inscriptions on the grave stones date from 1883 to 1997 and represent the burials of the Van Zyl and Heyns families. The graveyard is not part of the present developments and will not be affected in any way.

## **RECOMMENDATIONS**

No obvious reasons could be found to delay the commencement of further planning and development of the site.

After examination by the archaeologist, it is recommended that the proposed developments may proceed.

## **MITIGATION**

Concerning the area for the proposed development, no mitigation measures are needed.

## **ACKNOWLEDGEMENTS**

I thank Dr Johan du Preez of MDA Environmental Consultants, Bloemfontein, and Jako Viviers of LMV Environmental Specialists, Kroonstad, for taking me to the sites. I also owe gratitude to Brad Goldblatt for his hospitality during our visits to the farm.

**SELECT BIBLIOGRAPHY:**

BIBLIOPHILE, 2003. All our yesterdays. Clarens.

DEACON, J. 1992. Archaeology for Planners, Developers and Local Authorities. Cape Town: National Monuments Council.

DREYER, J.J.B. 1992. The Iron Age Archaeology of Doornpoort, Winburg, Orange Free State. Navorsing van die Nasionale Museum, Bloemfontein, Vol.8(7):262-390.

DREYER, J. 1996. Introduction to Free State Iron Age Archaeology. In: Guide to archaeological sites in the Free State and Lesotho. Southern African Association of Archaeologists (SA3), 14th Biennial Conference, Bloemfontein, Post-conference tour 5-8 July 1996. Bloemfontein: National Museum.

DREYER, J. 2000. Mountains and Rivers of the Free State - Manual for field research / Berge en Riviere van die Vrystaat – Handleiding vir veldnavorsing. Bloemfontein: University of the Free State, Department of Anthropology, Occasional Paper No. 2.

HUMPHREYS, A.J.B. 1986. Searching for the past. Cape Town: David Philip.

MAGGS, T.M. 1976. Iron Age Communities of the Southern Highveld. Pietermaritzburg: Natal Museum.

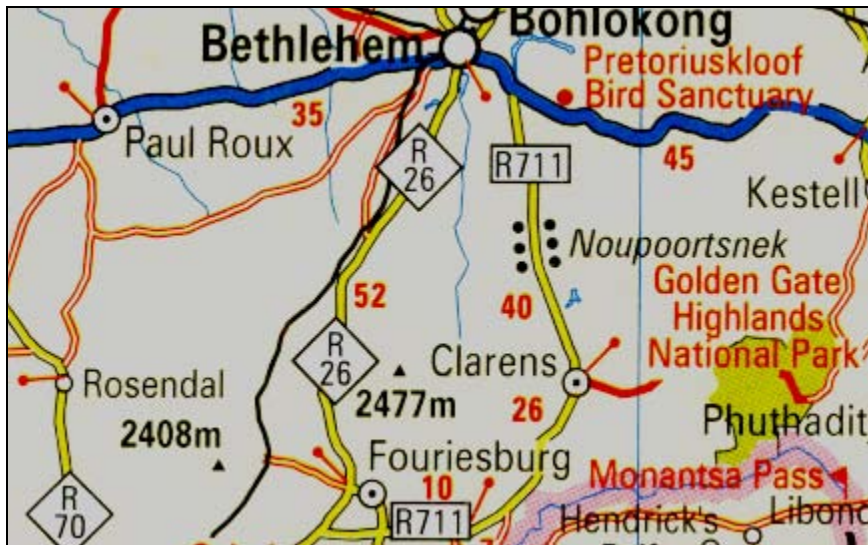
MAGGS, T.M. 1976. Iron Age Communities of the Southern Highveld. Pietermaritzburg: Natal Museum.

PISTORIUS, J.C.C. 1994. Eskom Archaeological Site Identification Guide. Johannesburg: Eskom.

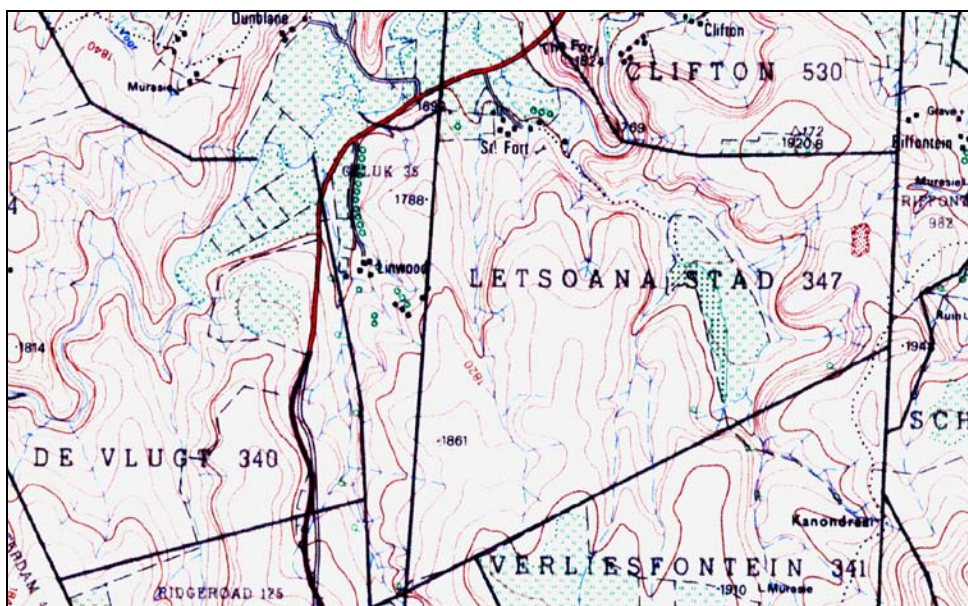
SURVEYOR-GENERAL O.F.S. 1973. Index of Orange Free State Farms. Bloemfontein.

VAN RENSBURG, A.P.J. 1968. Golden Gate – Die geskiedenis van twee plase wat 'n Nasionale Park geword het. Koedoe 11:83-138.

## LIST OF ILLUSTRATIONS:



Map 1 Locality of Clarens in relation to Fouriesburg, Bethlehem and Golden Gate.



Map 2 The locality of the farm Letsoanastad 347 to the south of Clarens (2828CB).

Fig.1 Letsoanastad 347 to the south of Clarens (2828CB.

Fig.2 Letsoanastad 347 to the south of Clarens (2828CB.

Fig.3 Letsoanastad 347 to the south of Clarens (2828CB.

Fig.4 Letsoanastad 347 to the south of Clarens (2828CB.

Fig.5 Letsoanastad 347 to the south of Clarens (2828CB.

Fig.6 Letsoanastad 347 to the south of Clarens (2828CB.

Fig.7 Letsoanastad 347 to the south of Clarens (2828CB.

Fig.8 . Letsoanastad 347 to the south of Clarens (2828CB).

Fig.10 Letsoanastad 347 to the south of Clarens (2828CB.

Fig.11 Letsoanastad 347 to the south of Clarens (2828CB.

Fig.12 Letsoanastad 347 to the south of Clarens (2828CB



Fig.13 Letsoanastad 347 to the south of Clarens (2828CB

Fig.14 Letsoanastad 347 to the south of Clarens (2828CB

Fig.15 Letsoanastad 347 to the south of Clarens (2828CB  
.

Fig.16 Letsoanastad 347 to the south of Clarens (2828CB  
.

Fig.17 Letsoanastad 347 to the south of Clarens (2828CB