



# **COBUS DREYER**

**Pr. Archaeologist/Heritage Resource Specialist**

**P.O. Box 12910  
BRANDHOF 9324  
Bloemfontein  
dreyerj@telkomsa.net**

**Tel: 051-444 1187  
Fax: 051-444 4395  
Cell: 083 357 7982**

30 JUNE 2006

## **FIRST PHASE ARCHAEOLOGICAL AND CULTURAL HERITAGE ASSESSMENT OF THE PROPOSED RESIDENTIAL DEVELOPMENTS AT ARARAT 916, CLARENS, FREE STATE**

### **EXECUTIVE SUMMARY**

New residential developments are planned on the farm Ararat 916 Clarens, Free State.

The developments will be erected on a portion of the farm, which has until recently been used as plough lands. No archaeological and cultural remains occurred at the site.

I recommend that the planning of the residential area could proceed. I suggest that the desirability to use of good arable land for residential developments should be reconsidered by the authorities.

### **INTRODUCTION AND DESCRIPTION**

#### **INVESTIGATION**

The site for the proposed new township developments at Ararat 916, Clarens was visited on 24 February 2006. Dr Johan du Preez of MDA Environmental Consultants, Bloemfontein and Jako Viviers of LMV Environmental Specialists, Kroonstad, took me to the site. At the farm Mr Eddie Smit took us to the site.

The area was examined for possible archaeological and historical material and to establish the potential impact on any cultural material that might be found. The Heritage Impact Assessment (HIA) is done in terms of the National Heritage Resources Act (NHRA), (25 of 1999) and under the Environmental Conservation Act, (73 of 1989).

## **LOCALITY**

The farm Ararat 916 is located north of Clarens along the R711 main road to Bethlehem (Map 1).

The proposed area of development is situated to the east of the farmhouse (Map 2&3).

The land proposed for residential developments forms part of ploughing fields, which until recently had been used for maize production (Figs.2-4).

The following GPS coordinates (Cape scale) were taken:

South western corner      28°26'59"S. 026°25'45"E Altitude 1770m (Fig.2).

South eastern corner      28°27'14"S. 026°25'54"E Altitude 1777m (Fig.4).

## **RESULTS**

The land proposed for residential developments used to be plough lands (Figs. 2-4).

No indication of any archaeological or historical material was found at the site.

## **IMPACT ASSESSMENT**

The proposed residential developments at Ararat 916, Clarens, will have no impact on any archaeological or cultural heritage remains on the proposed site.

It is alarming to observe the rapid increase in the exploitation of arable land for residential expansion in the Free State. The authorities should become aware of this reality and take the necessary decision on this practice.

## **RECOMMENDATIONS**

There are no obvious reasons to delay the commencement of further planning and development of the site. If the proposed developments are approved by the Department of Agriculture or other related authorities, I recommend that the developments at Ararat 916, Clarens, should be allowed to proceed.

## **MITIGATION**

Concerning the area for the proposed developments, no mitigation measures will be required.

## **ACKNOWLEDGEMENTS**

I thank Dr Johan du Preez of MDA Environmental Consultants, Bloemfontein and Jako Viviers of LMV Environmental Specialists, Kroonstad, for taking me to the site.

## **SELECT BIBLIOGRAPHY:**

BIBLIOPHILE, 2003. All our yesterdays. Clarens.

DEACON, J. 1992. Archaeology for Planners, Developers and Local Authorities. Cape Town: National Monuments Council.

DREYER, J.J.B. 1992. The Iron Age Archaeology of Doornpoort, Winburg, Orange Free State. *Navorsing van die Nasionale Museum, Bloemfontein*, Vol.8(7):262-390.

DREYER, J. 1996. Introduction to Free State Iron Age Archaeology. In: Guide to archaeological sites in the Free State and Lesotho. Southern African Association of Archaeologists (SA3), 14th Biennial Conference, Bloemfontein, Post-conference tour 5-8 July 1996. Bloemfontein: National Museum.

DREYER, J. 2000. Mountains and Rivers of the Free State - Manual for field research / Berge en Riviere van die Vrystaat – Handleiding vir veldnavorsing. Bloemfontein: University of the Free State, Department of Anthropology, Occasional Paper No. 2.

HUMPHREYS, A.J.B. 1986. Searching for the past. Cape Town: David Philip.

MAGGS, T.M. 1976. Iron Age Communities of the Southern Highveld. Pietermaritzburg: Natal Museum.

MAGGS, T.M. 1976. Iron Age Communities of the Southern Highveld. Pietermaritzburg: Natal Museum.

PISTORIUS, J.C.C. 1994. Eskom Archaeological Site Identification Guide. Johannesburg: Eskom.

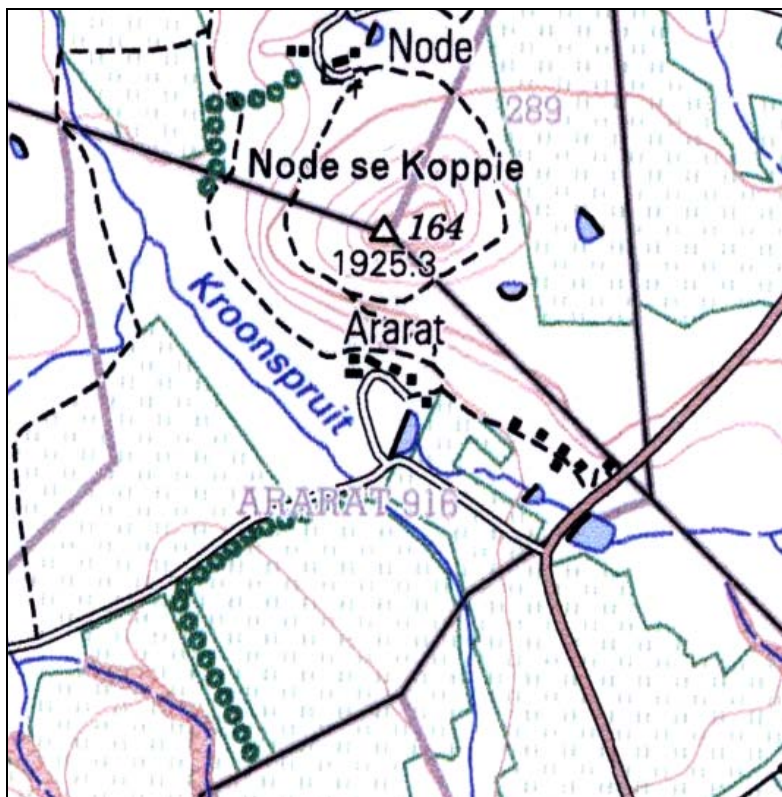
SURVEYOR-GENERAL O.F.S. 1973. Index of Orange Free State Farms. Bloemfontein.

VAN RENSBURG, A.P.J. 1968. Golden Gate – Die geskiedenis van twee plase wat 'n Nasionale Park geword het. *Koedoe* 11:83-138.

## **LIST OF ILLUSTRATIONS**



Map 1 Locality of Clarens in relation to Fouriesburg, Bethlehem and Golden Gate.



Map 2 Locality of Ararat 916, Clarens (2828AD).



Fig.1 View of Ararat or Node's Koppie on the northern border of the farm Ararat 916, Clarens.



Fig.2 View of the plough lands proposed for residential development facing north.





Fig.3 View of the proposed residential area at Ararat 916, Clarens, facing east.



Fig.4 Plough lands at Ararat 916, Clarens, proposed for residential developments.