



# **COBUS DREYER**

**Pr. Archaeologist/Heritage Specialist**

**P.O. Box 12910  
BRANDHOF 9324  
Bloemfontein  
dreyerj@telkomsa.net**

**Tel: 051-444 1187  
Fax: 051-444 4395  
Cell: 083 357 7982**

24 JULY 2006

## **FIRST PHASE ARCHAEOLOGICAL AND CULTURAL HERITAGE ASSESSMENT OF THE PROPOSED RESIDENTIAL DEVELOPMENTS ON THE FARM CRAIG ROSSIE 1422, CLARENS, FREE STATE**

### **INVESTIGATION**

The area selected for residential developments on the farm Craig Rossie 1422, Clarens, Free State, was visited on 14 July 2006. I was accompanied by Dr Johan du Preez of MDA Environmental Consultants, Bloemfontein. At the farm, Mr Dave Dix, the owner, directed us to the site.

The area was examined for possible archaeological and historical remains and to establish the potential impact on any cultural material that might be found. The Heritage Impact Assessment (HIA) is done in terms of the National Heritage Resources Act (NHRA), (25 of 1999) and under the Environmental Conservation Act, (73 of 1989).

### **LOCALITY**

The proposed residential developments are planned on a portion of the farm Craig Rossie 1422, Clarens, in the district of Bethlehem (Surveyor-General O.F.S. 1973) (Map 2). The farm is reached from the road between Clarens and the Golden Gate Highlands National Park (Map 1).

The area of development lies to the north east of the farmhouse and will make provision for about 15 stands. The developments will be placed on the highest point facing Mt Horeb in the direction of Clarens (Fig.8).

The vegetation on the land consists of a thick stand of cultivated Eragrostis grass cover (Figs.1-5).

Flood water control contour walls are visible and the remains of an old road were recognised on the surface (Fig.7).

The following GPS coordinates (Cape scale) were taken (2828CB):

Entry road                      28°32'38"S 028°28'16"E Altitude 1784m (Fig.1).

South west                      28°32'39"S 028°28'10"E Altitude 1767m (Fig.2).

North west                      28°32'31"S 028°28'12"E Altitude 1765m (Fig.3).

East                              28°32'31"S 028°28'17"E Altitude 1786m (Fig.4).

Hill                                28°32'33"S 028°28'17"E Altitude 1777m (Fig.5).

## **FINDS**

The area proposed for residential developments is part of agricultural and grazing fields and is covered with cultivated *Eragrostis* grass (Figs.1-4).

Fragments of Agate and other lithic material (Fig.6), which resembles Later Stone Age source material, were found on rocky patches towards the hill. However, the site does not contain any archaeological, cultural or historical remains.

## **RECOMMENDATIONS**

No obvious reasons could be found to delay the commencement of further planning and development of the site.

I recommend that the proposed developments may proceed.

## **MITIGATION**

Concerning the area for the proposed development, no mitigation measures are needed.

## **ACKNOWLEDGEMENTS**

I thank Dr Johan du Preez of MDA Environmental Consultants for taking me to the site.

**SELECTED BIBLIOGRAPHY:**

BIBLIOPHILE, 2003. All our yesterdays. Clarens.

DEACON, J. 1992. Archaeology for Planners, Developers and Local Authorities. Cape Town: National Monuments Council.

DREYER, J.J.B. 1992. The Iron Age Archaeology of Doornpoort, Winburg, Orange Free State. Navorsing van die Nasionale Museum, Bloemfontein, Vol.8(7):262-390.

DREYER, J. 1996. Introduction to Free State Iron Age Archaeology. In: Guide to archaeological sites in the Free State and Lesotho. Southern African Association of Archaeologists (SA3), 14th Biennial Conference, Bloemfontein, Post-conference tour 5-8 July 1996. Bloemfontein: National Museum.

DREYER, J. 2000. Mountains and Rivers of the Free State - Manual for field research / Berge en Riviere van die Vrystaat – Handleiding vir veldnavorsing. Bloemfontein: University of the Free State, Department of Anthropology, Occasional Paper No. 2.

HUMPHREYS, A.J.B. 1986. Searching for the past. Cape Town: David Philip.

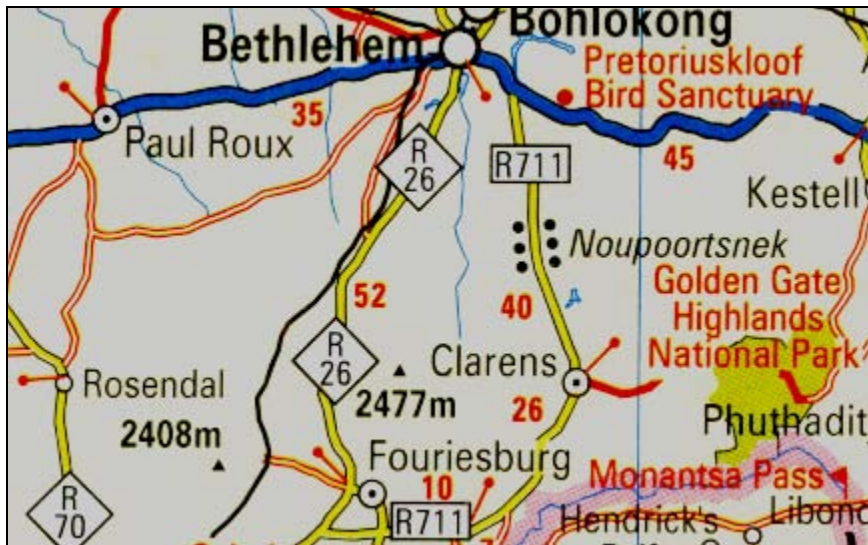
MAGGS, T.M. 1976. Iron Age Communities of the Southern Highveld. Pietermaritzburg: Natal Museum.

PISTORIUS, J.C.C. 1994. Eskom Archaeological Site Identification Guide. Johannesburg: Eskom.

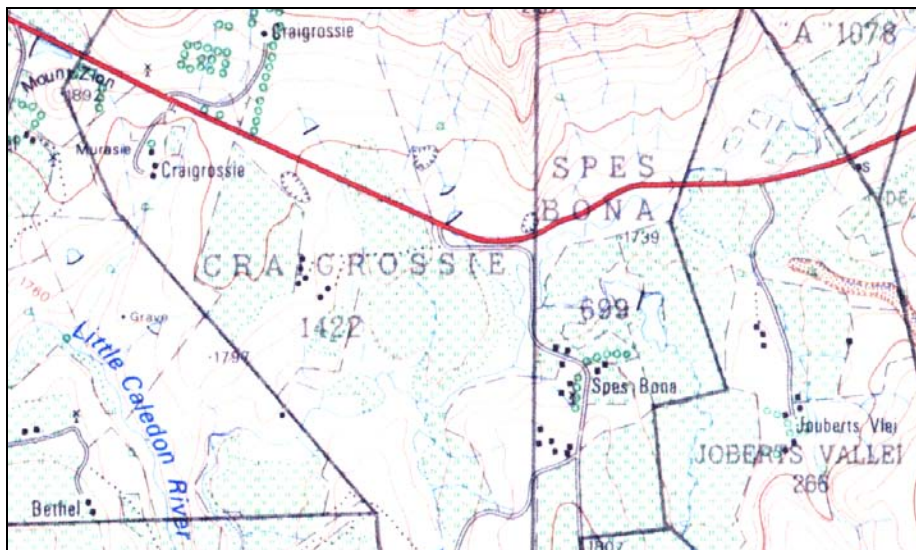
SURVEYOR-GENERAL O.F.S. 1973. Index of Orange Free State Farms. Bloemfontein.

VAN RENSBURG, A.P.J. 1968. Golden Gate – Die geskiedenis van twee plase wat 'n Nasionale Park geword het. Koedoe 11:83-138.

## LIST OF ILLUSTRATIONS:



Map 1 Locality of Clarens in relation to Fouriesburg, Bethlehem and Golden Gate.



Map 2 The locality of the farm Craigrossie 1422, Clarens (2828CB).



Fig.1 View at the entrance road to Graig Rossie 1422, facing towards Clarens.



Fig.2 View from the south western corner of the proposed area of development.



Fig.3 View from the north western corner of the proposed development at Craig Rossie.



Fig.4 View from the eastern corner of the proposed site at Craig Rossie, Clarens.



Fig.5 The hill on the eastern border of the site.



Fig.6 Lithic material at Craig Rossie, near Clarens.



Fig.7 Contour and old road visible in the proposed area of development.



Fig.8 View from Craig Rossie towards Clarens across the area of development.