



COBUS DREYER

Pr. Archaeologist/Heritage Resource Specialist

**P.O. Box 12910
BRANDHOF 9324
Bloemfontein
dreyerj@telkomsa.net**

**Tel: 051-444 1187
Fax: 051-444 4395
Cell: 083 357 7982**

25 MAY 2006

FIRST PHASE ARCHAEOLOGICAL AND CULTURAL HERITAGE INVESTIGATION OF THE PROPOSED DEVELOPMENTS ON HESTERSHOEK 356, BOSDUIFKLOOF 522 & JOUBERTSGIFT 521, BETHULIE, FREE STATE

EXECUTIVE SUMMARY

The proposed residential developments are planned at Hestershoek 356, Bosduifkloof 522 and Joubertsgift 521, Bethulie, near Gariep Dam.

No archaeological material was found on any of the proposed sites in this area. Historical remains in the form of rectangular stone-walls occur on the farm Hestershoek near the ruin of the farm house, but will be outside the area of development.

I recommend that the planning of the development of the site should proceed.

INTRODUCTION AND DESCRIPTION

INVESTIGATION

The sites for the proposed residential developments on the farms Hestershoek 356, Bosduifkloof 522 and Joubertsgift 521, Bethulie, near Gariep Dam were visited on 26 April 2006 and 24 October 2007 in the company of Dr Johan du Preez of MDA Environmental Consultants, Bloemfontein. At the farm we were received by the landowner, Mr Bertus Kotze.

The area was examined for possible archaeological and historical material and to establish the potential impact on any cultural material that might be found. The Heritage Impact Assessment (HIA) is done in terms of the National Heritage Resources Act (NHRA), (25 of 1999) and under the Environmental Conservation Act, (73 of 1989).

LOCALITY

The farms are located along the R701 from Gariep Dam to Bethulie (Map 1) (Surveyor-General 1973).

Vegetation of the area consists of grass plains with shrubs in between.

The following GPS coordinates (Cape scale) were taken (3025DA):

Rectangular stone structures 30°32'11"S 025°36'42"E Altitude 1314m (Figs.6-9).

Farm stead Hestershoek 30°31'55"S 025°36'43"E Altitude 1318m (Fig.12).

Bosduifkloof 30°32'39"S 025°37'48"E Altitude 1312m.

Point A (HHK/BDK) 30°32'50"S 025°36'48"E Altitude 1277m (Fig.13).

Point B 30°33'01"S 025°38'02"E Altitude 1287m (Fig.14).

RESULTS

Rectangular stone-walled enclosures (Figs.6-9) occur on the farm Hestershoek near the ruin of the farm house (Fig.12) and therefore, date from historical times.

A small number of highly patinated stone flakes were collected in the area around the chalets at Hestershoek (Figs.2&15). This collection represents a very small find and it is limited to that specific area. No other cultural material was found at the site and no further indications of any other archaeological or historical material were found.

FINDS

RECTANGULAR STONE-WALLED ENCLOSURES

Several rectangular stone-walled enclosures (Fig.6-9) are located near the ruined farmhouse at Hestershoek (Fig.12). A single lower grinding stone (Fig.10) and one upper grinder (Fig.11) were found near the kraals.

Another stone-wall seems to be more like a boundary fence (Fig.9). The origin and purpose of these walls are unknown, but due to its proximity of the farmhouse, I assume that these features date from times of European farming in the region.

ASSESSMENT OF IMPACT

The proposed developments at Hestershoek 356, Bosduifkloof 522 and Joubertsgift 521, Bethulie, will have no impact on the historical remains of the area. The stone-walled structures should not be included in the planning of the developments at the site.

RECOMMENDATIONS

I recommend that the proposed developments at Hestershoek 356, Bosduifkloof 522 and Joubertsgift 521, Bethulie, should proceed.

There is no obvious reason to delay further planning and development of the site.

MITIGATION

Concerning the area for the proposed developments, no mitigation measures will be required.

The stone-walls at Hestershoek should be avoided and people should be discouraged to exploit the stone-walls during the building stage.

ACKNOWLEDGEMENTS

I thank Dr Johan du Preez of MDA Environmental Consultants, Bloemfontein, for taking me to the site.

SELECT BIBLIOGRAPHY:

DEACON, J. 1992. Archaeology for Planners, Developers and Local Authorities. Cape Town: National Monuments Council.

DREYER, J.J.B. 1992. The Iron Age Archaeology of Doornpoort, Winburg, Orange Free State. Navorsing van die Nasionale Museum, Bloemfontein, Vol.8(7):262-390.

DREYER, J. 1996. Introduction to Free State Iron Age Archaeology. In: Guide to archaeological sites in the Free State and Lesotho. Southern African Association of Archaeologists (SA3), 14th Biennial Conference, Bloemfontein, Post-conference tour 5-8 July 1996. Bloemfontein: National Museum.

DREYER, J. 2000. Mountains and Rivers of the Free State - Manual for field research / Berge en Riviere van die Vrystaat – Handleiding vir veldnavorsing. Bloemfontein: University of the Free State, Department of Anthropology, Occasional Paper No. 2.

HUMPHREYS, A.J.B. 1986. Searching for the past. Cape Town: David Philip.

MAGGS, T.M. 1976. Iron Age Communities of the Southern Highveld. Pietermaritzburg: Natal Museum.

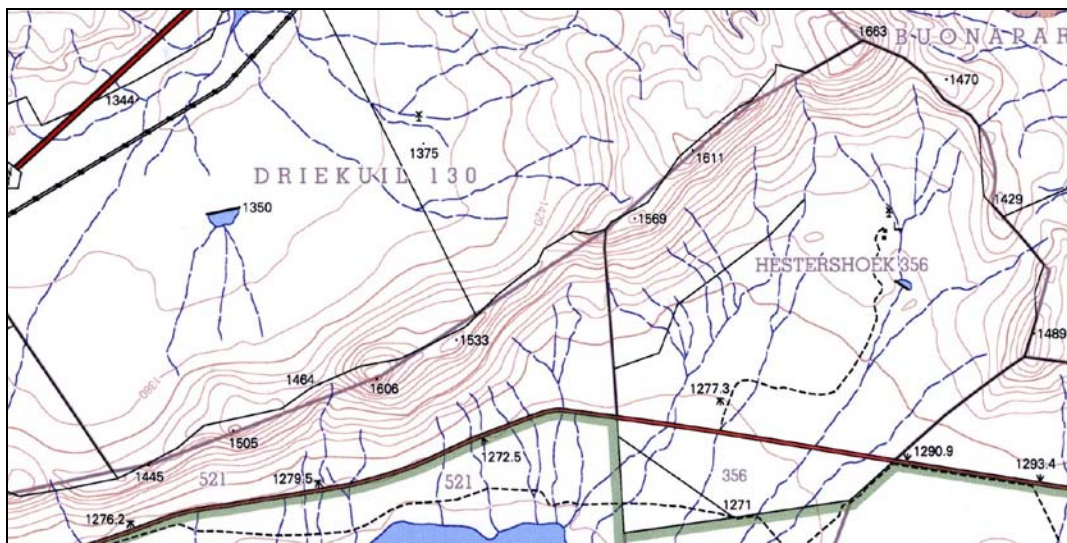
PISTORIUS, J.C.C. 1994. Eskom Archaeological Site Identification Guide. Johannesburg: Eskom.

SURVEYOR-GENERAL O.F.S. 1973. Index of Orange Free State Farms. Bloemfontein.

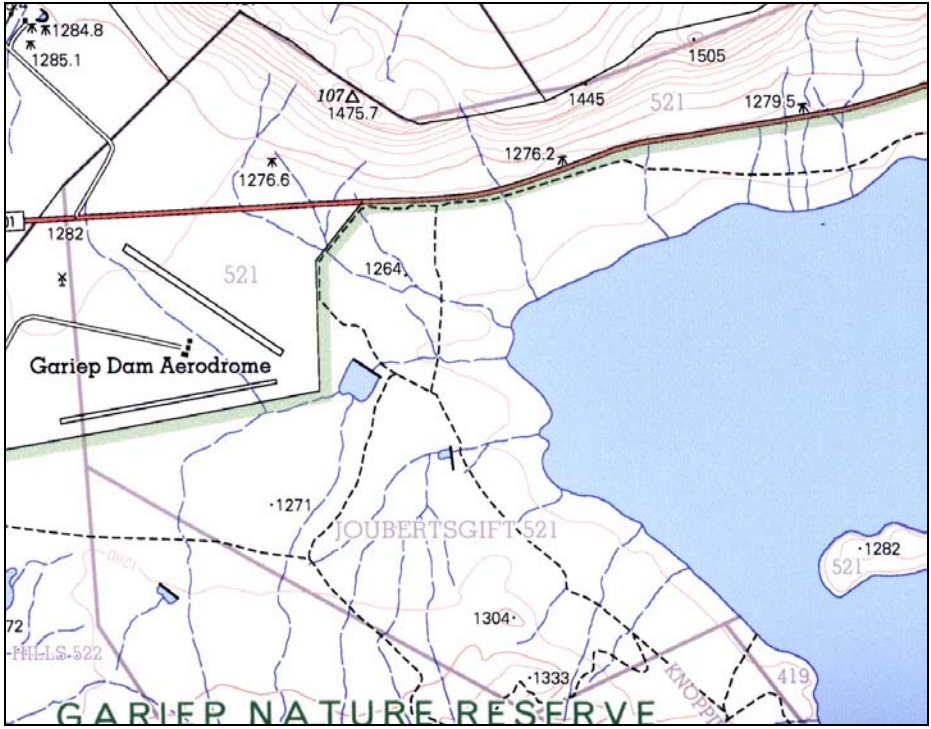
LIST OF ILLUSTRATIONS:



Map 1 The locality of Bethulie in relation to Gariep Dam in the southern Free State.



Map 2 Details on the locality of Hestershoek 356, Bethulie (3025DA).



Map 3 Locality of Joubertsgift 521, Bethulie (3025DA).



Map 4 Bosduifkloof 522, Bethulie (3025DA).



Fig.1 Raptor Ridge Bed & Breakfast facility at Hestershoek 356, Bethulie.



Fig.2 Crude stone flakes from the area around the chalets, Hestershoek.
(Pocket knife = 83mm).



Fig.3 The proposed area of development at Hestershoek, Bethulie.



Fig.4 Another view of the proposed area of development at Hestershoek 356, Bethulie.



Fig.5 View from Hestershoek towards Gariep Dam.



Fig.6 Rectangular stone-walled structures at Hestershoek, Bethulie.



Fig.7 A stone-wall at Hestershoek, Bethulie.



Fig.8 Rectangular stone-walled features at Hestershoek.



Fig.9 Stone-wall along the ridge at Hestershoek, Bethulie.



Fig.10 Upper grinding stone from near the stone-walls at Hestershoek.
(Pocket knife = 83mm).



Fig.11 Lower grinding stone from near the stone-walls at Hestershoek.



Fig12 Old farmhouse at Hestershoek, Bethulie.



Fig.13 Point A (HHK/BDK) at Bosduifkloof 522, along the R701 near Bethulie (See Map 4).



Fig.14 Point B at Bosduifkloof 522, along the R701 near Bethulie (See Map 4).



Fig.15 Patinated stone flakes from the area around the chalets, Hestershoek.
(Pocket knife = 83mm).