



COBUS DREYER

Pr. Archaeologist/Heritage Specialist

**P.O. Box 12910
Brandhof
9324
dreyerc.HUM@mail.uovs.ac.za**

**Tel: 051 - 444 1187
Fax: 051 - 401 2363
Cell: 083 - 357 7982**

27 July 2005

FIRST PHASE ARCHAEOLOGICAL AND HISTORICAL INVESTIGATION OF THE PROPOSED RESIDENTIAL DEVELOPMENTS AT RODERICK'S PARK 2834, BLOEMFONTEIN

INVESTIGATION

The site for the proposed residential developments at the Subdivision of the Remainder of the farm Roderick's Park 2834, Bloemfontein, was visited and inspected on 15 July 2005. Neil Devenish of Cebo Environmental Consultants, Bloemfontein, accompanied me to the site.

The area was examined for possible archaeological and historical material and to establish the potential impact on any cultural material that might be found. The Heritage Impact Assessment (HIA) is done in terms of the National Heritage Resources Act (NHRA), (25 of 1999) and under the Environmental Conservation Act, (73 of 1989).

LOCALITY

The site is located along the extension of Andries Pretorius Road and adjacent to the existing suburb of Noordhoek north of Bloemfontein (Surveyor-General O.F.S. 1973) (2926AB) (Map 1).

The area contains clay soil and the surface is covered with short grass (Fig.4).

The following GPS coordinates (Cape scale) were taken:

South western corner 29°04'52"S. 026°15'06"E. Altitude 1377m (Fig.1).

South eastern corner 29°04'59"S. 026°15'25"E. Altitude 1369m (Fig.1).

North eastern corner 29°04'52"S. 026°15'06"E. Altitude 1365m (Fig.1).

Northern centre of property 29°04'52"S. 026°15'06"E. Altitude 1377m (Fig.1).

FINDS

The soil surface appears to be sterile and no indication of any archaeological, historical or cultural material was found.

RECOMMENDATIONS

No obvious reasons could be found to delay the commencement of further planning and development of the site.

After examination by the archaeologist, it is recommended that the proposed developments may proceed.

MITIGATION

Concerning the area for the proposed development, no mitigation measures are needed.

ACKNOWLEDGEMENTS

I thank Neil Devenish for taking me to the site.

SELECT BIBLIOGRAPHY:

DEACON, J. 1992. Archaeology for Planners, Developers and Local Authorities. Cape Town: National Monuments Council.

DREYER, J.J.B. 1992. The Iron Age Archaeology of Doornpoort, Winburg, Orange Free State. Navorsing van die Nasionale Museum, Bloemfontein, Vol.8(7):262-390.

DREYER, J. 1996. Introduction to Free State Iron Age Archaeology. In: Guide to archaeological sites in the Free State and Lesotho. Southern African Association of Archaeologists (SA3), 14th Biennial Conference, Bloemfontein, Post-conference tour 5-8 July 1996. Bloemfontein: National Museum.

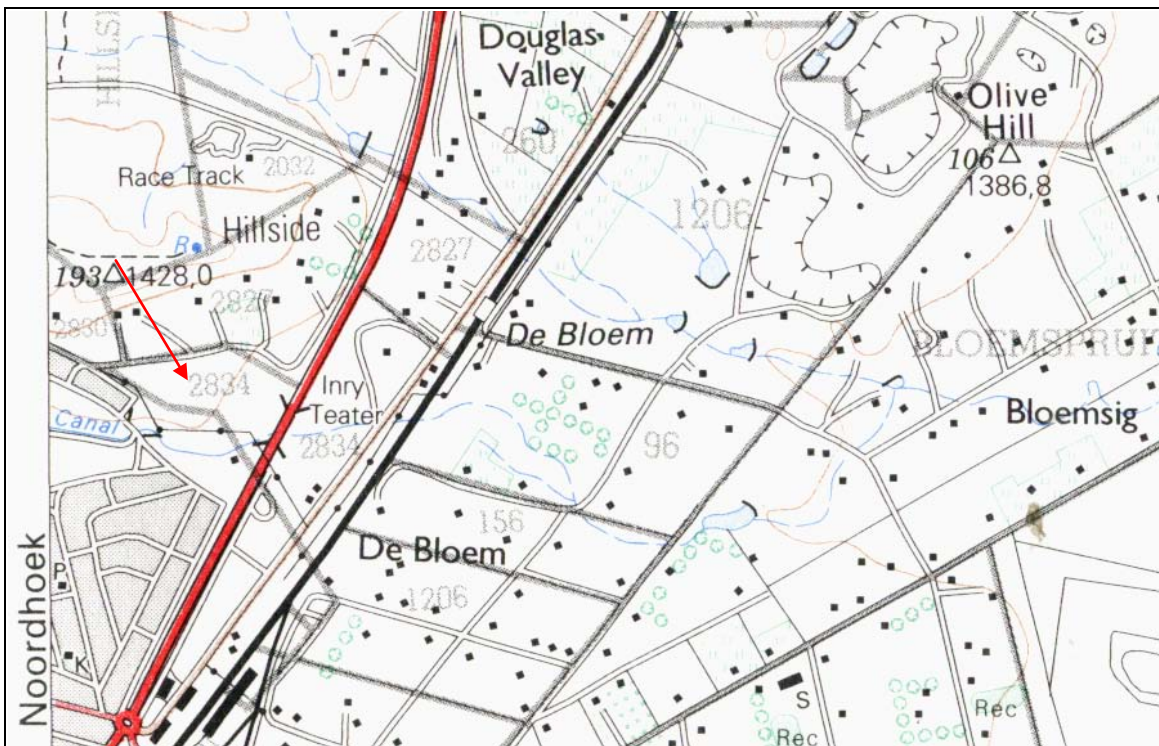
DREYER, J. 2000. Mountains and Rivers of the Free State - Manual for field research / Berge en Riviere van die Vrystaat – Handleiding vir veldnavorsing. Bloemfontein: University of the Free State, Department of Anthropology, Occasional Paper No. 2.

HUMPHREYS, A.J.B. 1986. Searching for the past. Cape Town: David Philip.
MAGGS, T.M. 1976. Iron Age Communities of the Southern Highveld. Pietermaritzburg: Natal Museum.

MAGGS, T.M. 1976. Iron Age Communities of the Southern Highveld. Pietermaritzburg: Natal Museum.

PISTORIUS, J.C.C. 1994. Eskom Archaeological Site Identification Guide. Johannesburg: Eskom.

SURVEYOR-GENERAL O.F.S. 1973. Index of Orange Free State Farms. Bloemfontein.



Map 1 Locality of Roderick's Park 2834 at Bloemfontein.

LIST OF ILLUSTRATIONS:

Fig.1 Roderick's Park 2834 on the outskirts of Bloemfontein facing south east.



Fig.2 A general view of the area facing east.



Fig.3 General view facing south towards Andries Pretorius Road.



Fig.4 The soil surface is grass covered and without any traces of cultural material.



Fig.5 Facing west towards the hill.