



COBUS DREYER

Pr. Archaeologist/Heritage Specialist

**P.O. Box 12910
Brandhof
9324
dreyerc.HUM@mail.uovs.ac.za**

**Tel: 051 - 444 1187
Fax: 051 - 401 2363
Cell: 083 - 357 7982**

17 AUGUST 2005

FIRST PHASE ARCHAEOLOGICAL AND HERITAGE ASSESSMENT OF THE PROPOSED RESIDENTIAL DEVELOPMENTS ON PLOTS 18, 20 & 21 ON THE FARM DEALES GIFT 2804, BLOEMFONTEIN

INVESTIGATION

The proposed residential development is planned on Plots 18, 20 & 21 of the remainder of the farm Deales Gift 2804, Bloemfontein (Surveyor-General O.F.S. 1973). The site was visited and inspected on 16 August 2005 in the company of Celeste Slaughter from Bokamoso Environmental Consultants, Bloemfontein. We met the owner of the Tafelkop Estate, Mr Jan de Wet during the visit.

The area was examined for possible archaeological and historical material and to establish the potential impact on any cultural material that might be present. The Heritage Impact Assessment (HIA) is done in terms of the National Heritage Resources Act (NHRA), (25 of 1999) and under the Environmental Conservation Act, (73 of 1989).

LOCALITY

The site for the proposed residential developments is located on the remainder of the farm Deales Gift 2804, north-east of Bloemfontein. The property lies to the east of the R30 road to Brandfort and borders on the main railway line from Bloemfontein (Map 1) (2926AB).

The land faces the prominent hill called Tafelkop (Fig.1).

The proposed development will cover only a small portion of the total of 140 hectares. The area identified for development will run along the northern foot of the unnamed hill, facing Tafelkop towards the north (Fig.2).

There is a substantial stand of indigenous shrubs and trees (Acacia karoo and Wild Olive) along the floodwater ditch near the northern fence (Figs.1&3), while the rest of the property only contains a grass cover on clay soil (Fig.2).

There are two boreholes with pumping equipment to supply water to the property. (29°03'11"S. 026°16'22"E. Altitude 1361m) (Fig.4).

The following GPS coordinates (Cape scale) were taken:

Entrance gate	29°03'29"S. 026°16'08"E. Altitude 1368m.
SE corner along railway line (Fig.5).	29°03'33"S. 026°16'37"E. Altitude 1351m
NE corner along railway line	29°03'18"S. 026°16'47"E. Altitude 1351m
Residential house (Fig.6).	29°03'14"S. 026°16'20"E. Altitude 1364m

FINDS

A sparse scatter of Later Stone Age (LSA) individual flakes and tools occur on the soil surface and in the erosion gullies towards the storm water ditch (Fig.7). The sample provided inadequate information to identify the characteristics of the assemblage and the source of the finds.

Ruins of labourer's houses (29°03'21"S. 026°16'24"E. Altitude 1372m) (Figs.8&9) with associated ash heaps are located along the north-facing slope of the hill (29°03'23"S. 026°16'24"E. Altitude 1380m).

A cluster of about 63 graves was located at the foot and towards the eastern end of the hill (29°03'25"S. 026°16'29"E. Altitude 1373m) (Figs.10-14). The houses with ash heaps and graves with a metal cross and glass and other containers as grave goods, could connect the graves to the occupants of the mentioned houses.

No indication of other archaeological, historical material or Anglo-Boer War relics was discovered in the inspected area and neither was any ceramic ware found.

RECOMMENDATIONS

It is recommended that the graves should be strictly avoided during the present and future developments. The graves should be fenced off and protected against any possible damage. Stone collection for building purposes should not be done in this area.

No other obvious reason could be found to delay the commencement of further planning and development of the site.

After examination by the archaeologist, it is recommended that the proposed developments may proceed.

MITIGATION

Concerning the area for the proposed development, no mitigation measures are needed.

In the case of the graves, no development should take place in this particular area.

ACKNOWLEDGEMENTS

I thank Celeste Slaughter for taking me to the site.

SELECT BIBLIOGRAPHY:

DEACON, J. 1992. Archaeology for Planners, Developers and Local Authorities. Cape Town: National Monuments Council.

DREYER, J. 1996. Introduction to Free State Iron Age Archaeology. In: Guide to archaeological sites in the Free State and Lesotho. Southern African Association of Archaeologists (SA3), 14th Biennial Conference, Bloemfontein, Post-conference tour 5-8 July 1996. Bloemfontein: National Museum.

DREYER, J. 2000. Mountains and Rivers of the Free State - Manual for field research / Berge en Riviere van die Vrystaat – Handleiding vir veldnavorsing. Bloemfontein: University of the Free State, Department of Anthropology, Occasional Paper No. 2.

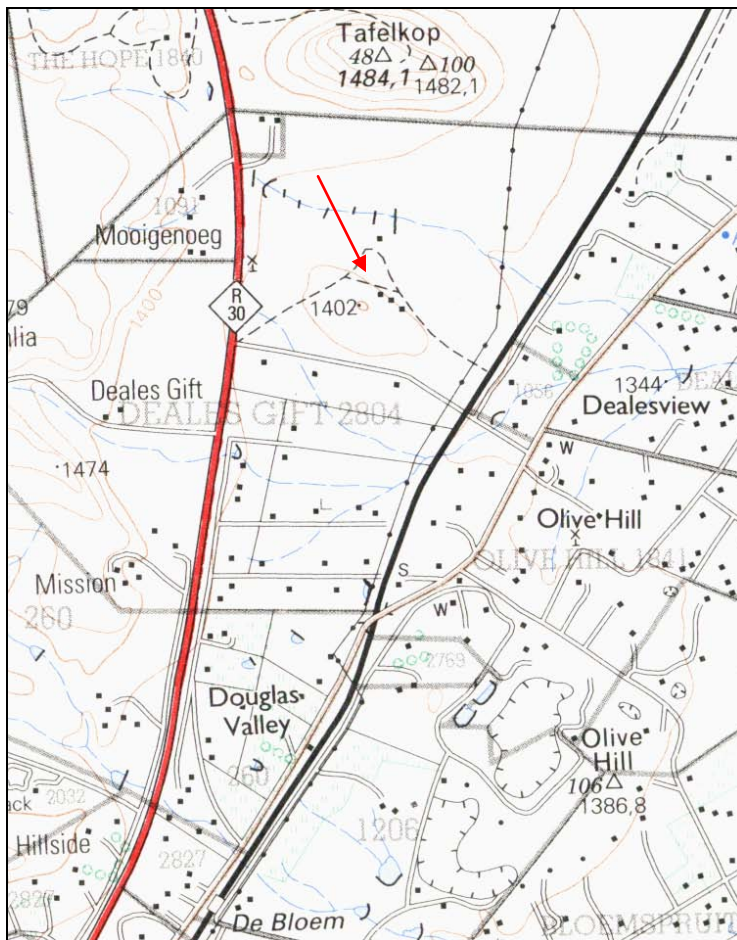
HUMPHREYS, A.J.B. 1986. Searching for the past. Cape Town: David Philip.

MAGGS, T.M. 1976. Iron Age Communities of the Southern Highveld.
Pietermaritzburg: Natal Museum.

PISTORIUS, J.C.C. 1994. Eskom Archaeological Site Identification Guide.
Johannesburg: Eskom.

SCHOEMAN, K. 1980. Bloemfontein – die ontstaan van 'n stad. Kaapstad:
Human & Rousseau.

SURVEYOR-GENERAL O.F.S. 1973. Index of Orange Free State Farms.
Bloemfontein.



Map 1 Locality of the farm Dealesgift 2804, Bloemfontein (2926AB).

LIST OF ILLUSTRATIONS:

Fig.1 Tafelkop as seen from the lower part of the farm near the railway line.



Fig.2. View of the unnamed hill on the property above the residential house.



Fig.3 A substantial bush and tree cover occur along the storm-water ditch.



Fig.4 The boreholes for the water supply.



Fig.5 South-eastern corner along the railway line.



Fig.6 Residential house.



Fig.7 A collection of Late Stone Age (LSA) tools and flakes found scattered on the surface.



Fig.8 The locality of labourer's houses along the north-facing slope of the hill.



Fig.9 Remains of labourer's houses.



Fig.10 Graves at the foot of the hill near the labourer's houses.



Fig.11 A grave with a metal cross headstone.



Fig.12 Another group of graves at Dealesgift 2804, Bloemfontein.



Fig.13 More graves at the site below the hill.



Fig.14 Grave covered with natural stones from the hill.