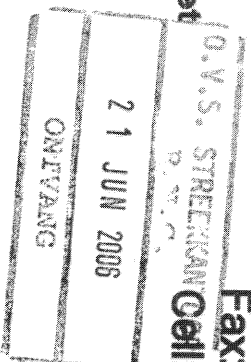


COBUS DREYER
Pr. Archaeologist/Heritage Specialist

P.O. Box 12910
Brandhof
9324
dreyerj@telkomsa.net

Tel: 051-444 1187
Fax: 051-444 4395
Cell: 083 357 7982



20 June 2006

FIRST PHASE ARCHAEOLOGICAL AND CULTURAL HERITAGE ASSESSMENT OF THE PROPOSED RESIDENTIAL DEVELOPMENTS AT BLOMANDA, BLOEMFONTEIN

EXECUTIVE SUMMARY

The new proposed residential developments are planned at the Blomanda Township at Mangaung, Bloemfontein.

No archaeological and cultural remains were found in the proposed area of development.

The proposed developments and planning of the site may proceed.

INTRODUCTION AND DESCRIPTION

INVESTIGATION

The site for the proposed residential developments in the Blomanda, Mangaung outside Bloemfontein, was visited on 12 April 2006. Me Erica Jacobs from Spatial Solutions Consultants, Bloemfontein, accompanied me to the site.

The area was examined for possible archaeological and historical material and to establish the potential impact on any cultural material that might be found. The Heritage Impact Assessment (HIA) is done in terms of the National Heritage Resources Act (NHRA), (25 of 1999) and under the Environmental Conservation Act, (73 of 1989).

LOCALITY

The proposed residential developments are planned on the farm Rocklands 684, Bloemfontein near Blomanda Township, Mangaung, south of Bloemfontein (Map 1) (Surveyor-General 1973).

The actual area proposed for residential development is located along the N6 road to Reddersburg and the R702 road to Dewetsdorp and is indicated on Map 2.

The area around the existing township of Botshabela and Rocklands is severely damaged and littered with household debris.

The lands represents old agricultural stands that are now unkempt and consists of a dense grass cover (Fig.).

The following GPS coordinates (Cape scale) were taken (2926AA):

Corner N6&R702 (N)	29°12'40"S 026°12'55"E	Altitude 1424m (Fig. 1).
R702&Power line (M)	29°12'56"S 026°13'26"E	Altitude 1424m (Fig. 4).
Farmhouse 1	29°12'41"S 026°13'17"E	Altitude 1422m (Fig. 5).
Farmhouse 2	29°12'46"S 026°13'16"E	Altitude 1422m.
Long building	29°12'32"S 026°13'30"E	Altitude 1423m (Fig. 6).
T Molosia St (E)	29°12'02"S 026°12'54"E	Altitude 1429m (Fig. 7).
(D)	29°12'03"S 026°13'06"E	Altitude 1433m.
Pump station	29°12'11"S 026°13'06"E	Altitude 1427m (Fig. 8).
(K)	29°12'03"S 026°13'06"E	Altitude 1433m.
ADM Selemela St	29°11'02"S 026°13'03"E	Altitude 1421m (Fig. 9).
(B)	29°12'04"S 026°13'15"E	Altitude 1418m.
(G) Slipway	29°11'26"S 026°12'56"E	Altitude 1440m (Fig. 10).

RESULTS

No indication of any archaeological or historical material was found in the proposed development area. The remnants of old brick-walled agricultural holdings and residential structures are in such a rundown state that there is nothing to preserve (Fig.).

IMPACT ASSESSMENT

The proposed residential developments at Blomanda at Mangaung, will have no impact on any archaeological or cultural heritage remains in the area.

RECOMMENDATIONS

No obvious reasons could be found to delay the commencement of further planning and development of the site and I recommend that the proposed residential developments at Blomanda should proceed.

MITIGATION

Concerning the area for the proposed developments, no mitigation measures will be required.

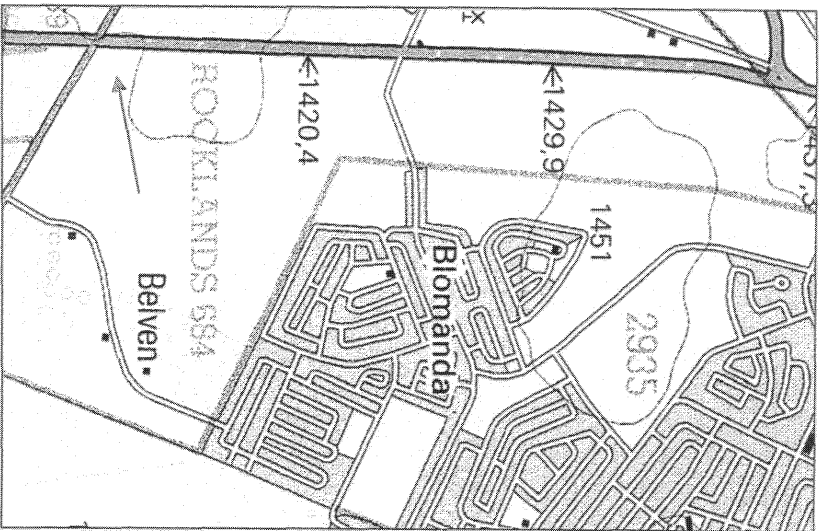
ACKNOWLEDGEMENTS

I thank Me Erica Jacobs from Spatial Solutions, Bloemfontein, for taking me to the site.

SELECT BIBLIOGRAPHY:

- DEACON, J. 1992. Archaeology for Planners, Developers and Local Authorities. Cape Town: National Monuments Council.
- DREYER, J.J.B. 1992. The Iron Age Archaeology of Doornpoort, Winburg, Orange Free State. Navorsinge van die Nasionale Museum, Bloemfontein, Vol.8(7):262-390.
- DREYER, J. 1996. Introduction to Free State Iron Age Archaeology. In: Guide to archaeological sites in the Free State and Lesotho. Southern African Association of Archaeologists (SA3), 14th Biennial Conference, Bloemfontein, Post-conference tour 5-8 July 1996. Bloemfontein: National Museum.
- DREYER, J. 2000. Mountains and Rivers of the Free State - Manual for field research / Berge en Riviere van die Vrystaat – Handleiding vir veldnavorsing. Bloemfontein: University of the Free State, Department of Anthropology, Occasional Paper No. 2.
- HUMPHREYS, A.J.B. 1986. Searching for the past. Cape Town: David Philip.
- MAGGS, T.M. 1976. Iron Age Communities of the Southern Highveld. Pietermaritzburg: Natal Museum.
- PISTORIUS, J.C.C. 1994. Eskom Archaeological Site Identification Guide. Johannesburg: Eskom.
- SURVEYOR-GENERAL O.F.S. 1973. Index of Orange Free State Farms. Bloemfontein.

LIST OF ILLUSTRATIONS



Map 1 Locality of the proposed developments between the N6 & R702 roads (2926AA).



Map 2 Locality of the proposed residential developments at Blomanda.

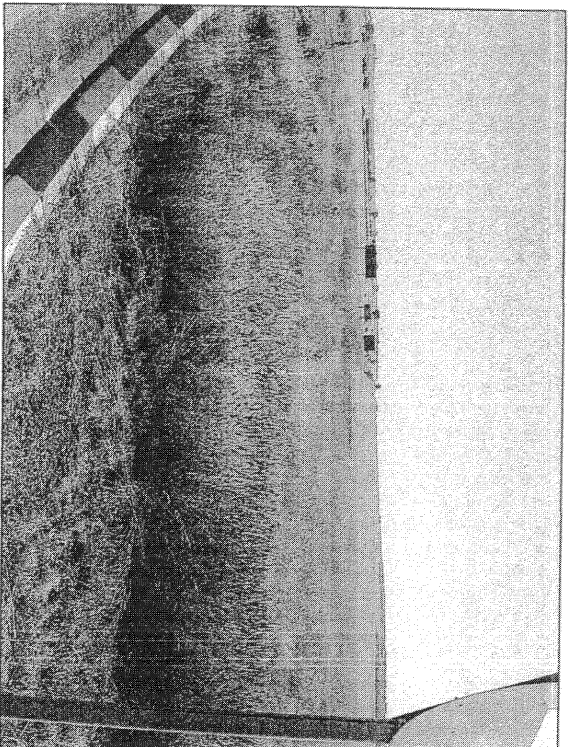


Fig. 1 View towards Bloemfontein, corner of the N6 and R702 main roads (N).

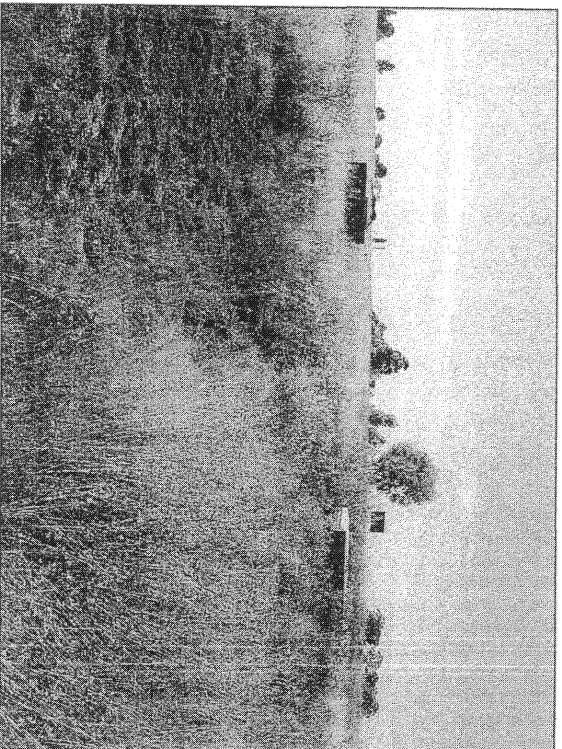


Fig. 2 Water pipeline along the R702 road.

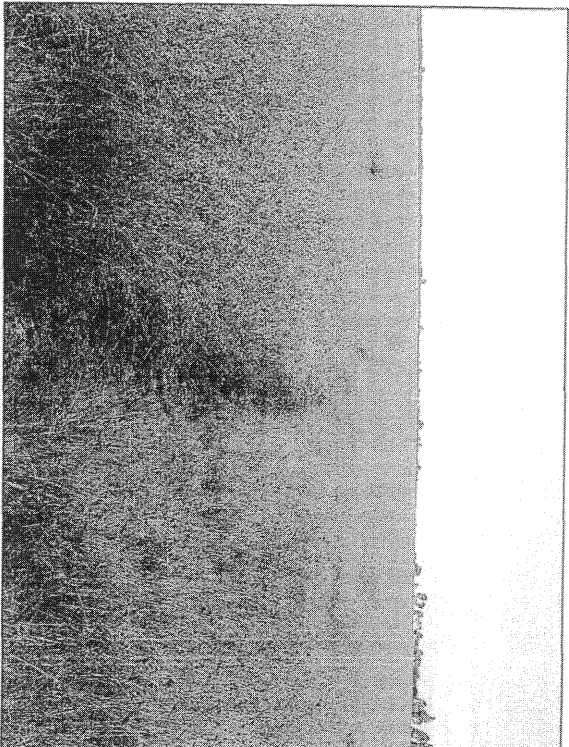


Fig.3 General view along the R702.

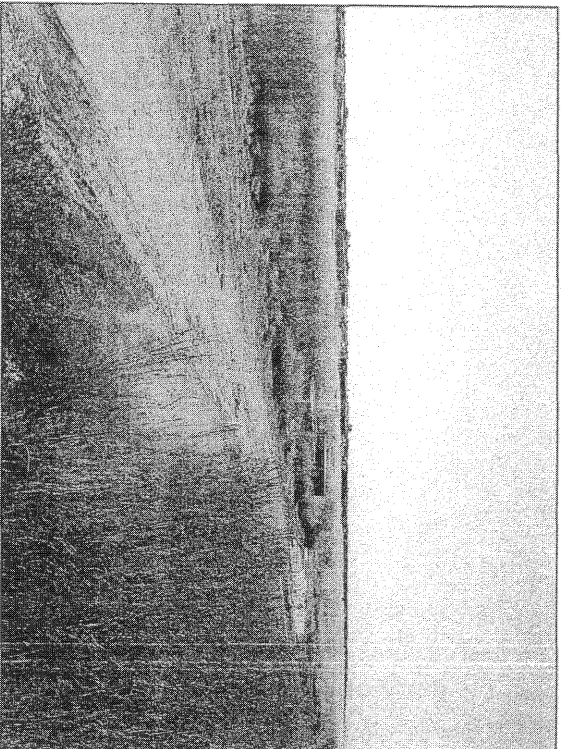


Fig.4 View from R702 road at the power line crossing (M).



Fig. 5 Remains of farmhouse 1 near the R702 road.

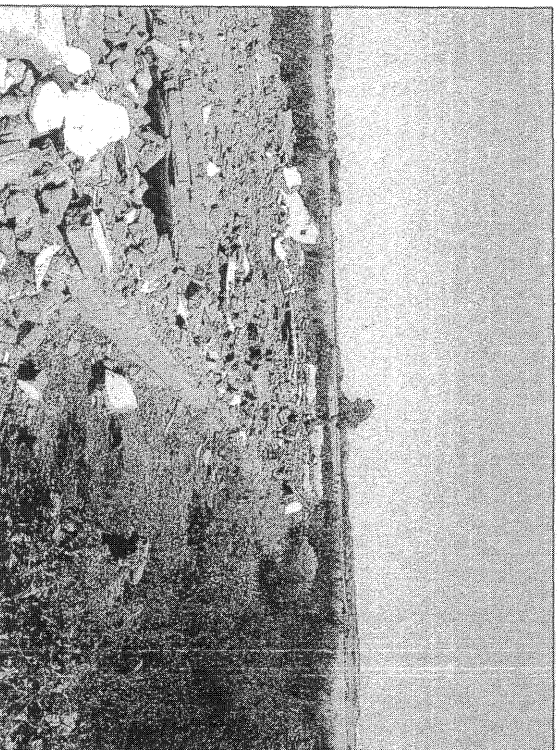


Fig. 6 Remains of a long building of unknown purpose.

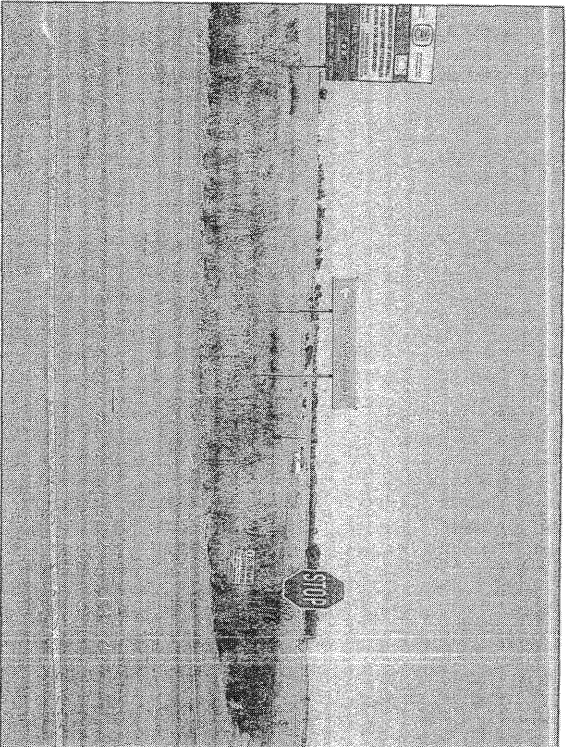


Fig. 7 Junction of T Molosioa Rd (E).

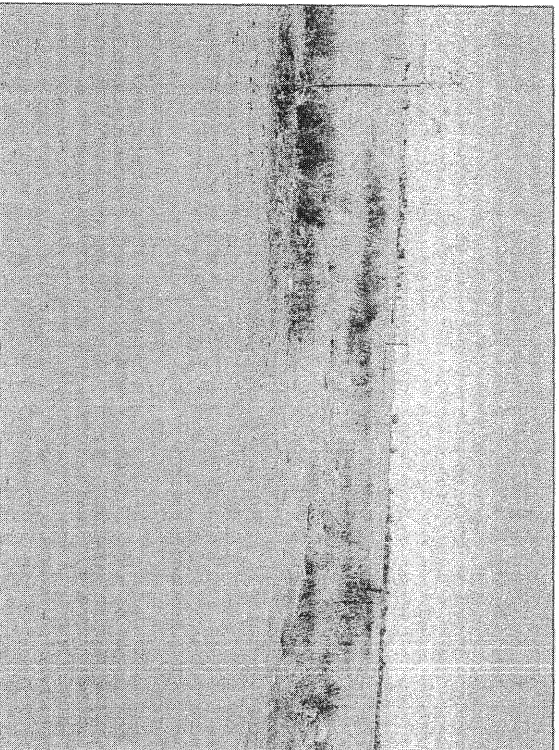


Fig. 8 View across the site. Sewer pump station in centre of picture.

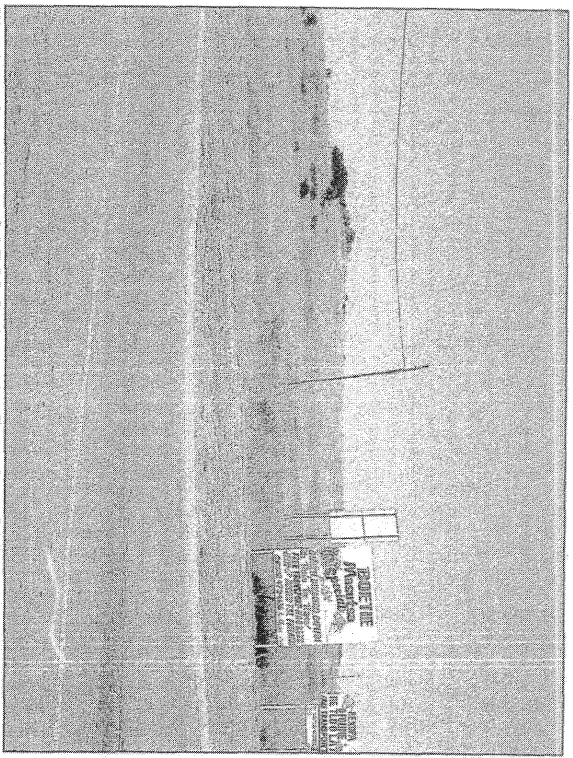


Fig. 9 Junction of ADM Selamele Rd with M30 main road from town.

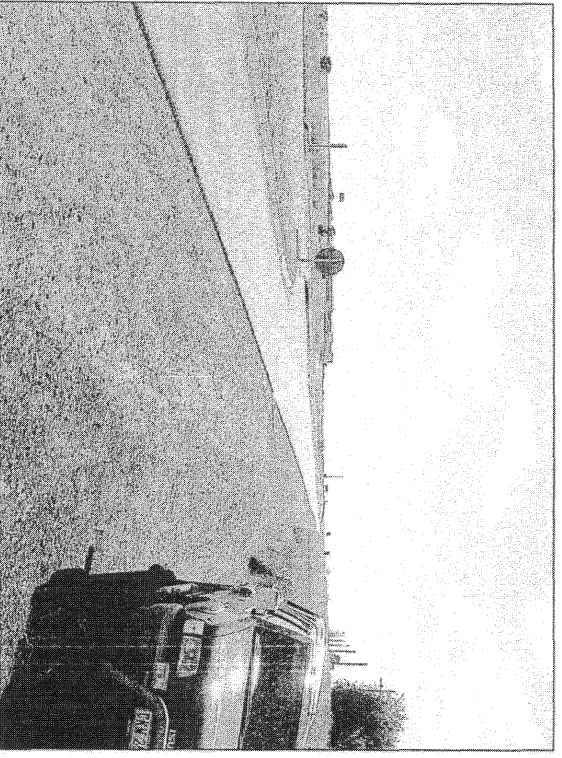


Fig. 10 Slipway to N1 from the M30 road from Bloemfontein.