



# **COBUS DREYER**

**Pr. Archaeologist/Heritage Resource Specialist**

**P.O. Box 12910  
BRANDHOF 9324  
Bloemfontein  
dreyerj@telkomsa.net**

**Tel: 051-444 1187  
Fax: 051-444 4395  
Cell: 083 357 7982**

20 JUNE 2006

## **FIRST PHASE ARCHAEOLOGICAL AND CULTURAL HERITAGE INVESTIGATION OF THE PROPOSED POWER TRANSMISSION LINE AT NORTHRIDGE MALL, BLOEMFONTEIN**

### **INVESTIGATION**

The corridor for the proposed power transmission line at Northridge Mall, Bloemfontein, was visited on 16 June 2006. Dr Johann du Preez of MDA Environmental Consultants, Bloemfontein, took me to the site.

The site was examined for any possible traces of cultural and historical remains to establish the potential impact of the developments on any archaeological and cultural historical material. The Heritage Impact Assessment (HIA) is done in terms of the National Heritage Resources Act (NHRA), (25 of 1999) and under the Environmental Conservation Act, (73 of 1989).

### **LOCALITY**

The proposed power transmission line will run in a westerly direction from the Bayswater Sub-station near Gladstone Road towards the Northridge Mall west of Bloemfontein.

The line will follow the existing servitude along the R700 road, crossing the farms Hillside 2830, Edendale 2147, where it will cross the R700 road to the farm Bayswater 2865 (Map 1).

The following GPS co-ordinates (Cape scale) were taken (2926AA):

|                                      |            |             |          |       |
|--------------------------------------|------------|-------------|----------|-------|
| Power line/R700 crossing<br>(Fig.4). | 29°03'39"S | 026°13'54"E | Altitude | 1413m |
|--------------------------------------|------------|-------------|----------|-------|

New sub-station                    29°03'19"S 026°13'43"E Altitude 1413m (Fig.5).

North Ridge Mall                29°04'14"S 026°14'09"E Altitude 1417m (Fig.3).

Bayswater Sub-station        29°04'30"S 026°14'41"E Altitude 1407m (Fig.1).

## **FINDS**

Road building and farming activities in the past have caused serious damage to the environment along the R700 road from North Ridge Mall (Fig.7).

No remains of archaeological or any other material of cultural and historical significance could be found along the corridor.

## **DISCUSSION**

The disturbances by previous activities developments made it unlikely that any remains of early human occupation could have survived.

## **RECOMMENDATIONS**

There is no obvious reason to delay the commencement of further planning and development of the power transmission line.

I recommend that the proposed developments may proceed.

## **MITIGATION**

Concerning the area for the proposed development, no mitigation measures are needed.

## **ACKNOWLEDGEMENTS**

I thank Dr Johan du Preez for taking me to the site.

**SELECT BIBLIOGRAPHY**

DEACON, J. 1992. Archaeology for Planners, Developers and Local Authorities. Cape Town: National Monuments Council.

DREYER, J. 1996. Introduction to Free State Iron Age Archaeology. In: Guide to archaeological sites in the Free State and Lesotho. Southern African Association of Archaeologists (SA3), 14th Biennial Conference, Bloemfontein, Post-conference tour 5-8 July 1996. Bloemfontein: National Museum.

DREYER, J. 2000. Mountains and Rivers of the Free State - Manual for field research / Berge en Riviere van die Vrystaat – Handleiding vir veldnavorsing. Bloemfontein: University of the Free State, Department of Anthropology, Occasional Paper No. 2.

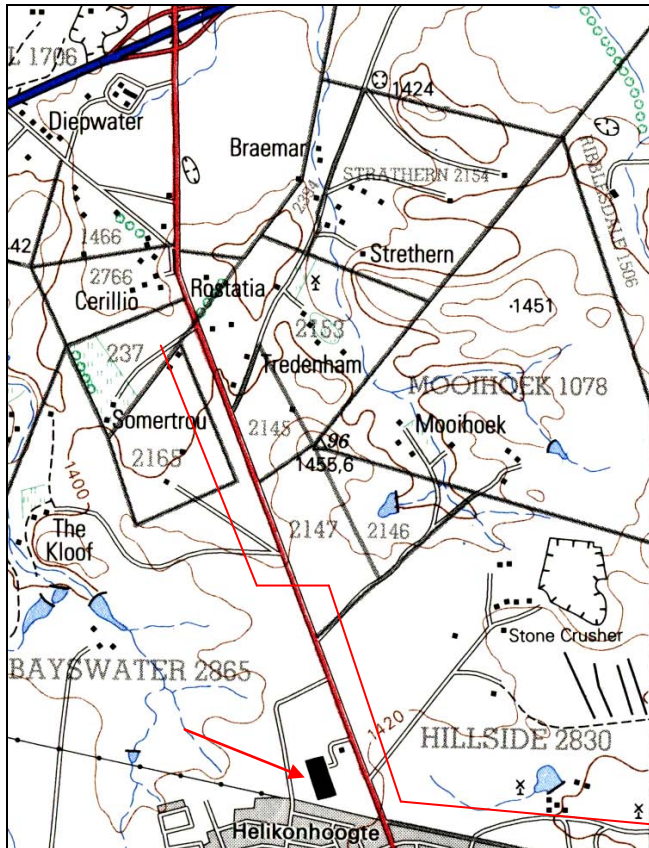
HUMPHREYS, A.J.B. 1986. Searching for the past. Cape Town: David Philip.

MAGGS, T.M. 1976. Iron Age Communities of the Southern Highveld. Pietermaritzburg: Natal Museum.

PISTORIUS, J.C.C. 1994. Eskom Archaeological Site Identification Guide. Johannesburg: Eskom.

SURVEYOR-GENERAL O.F.S. 1973. Index of Orange Free State Farms. Bloemfontein.

## LIST OF ILLUSTRATIONS:



Map 1 Red line indicates the estimated route of the new power transmission line from Bayswater Sub-station along the servitude next to the R700 road to Bultfontein. Northridge Mall indicated by red arrow.



Fig.1 View of the Bayswater Sub-station with Naval Hill in the background.



Fig.2 The power line route from Bayswater Sub-station towards North ridge Mall.



Fig.3 View of the area opposite North Ridge Mall.



Fig.4 The crossing point of the power transmission line over the R700 road.



Fig.5 Position of the new sub-station near the R700 road.



Fig.6 The servitude line on the farm Bayswater 2865 facing west.



Fig.7 Effects of road building in the area west of North Ridge Mall.