



# **COBUS DREYER**

**Pr. Archaeologist/Heritage Resource Specialist**

**P.O. Box 12910  
BRANDHOF 9324  
Bloemfontein  
dreyerj@telkomsa.net**

**Tel: 051-444 1187  
Fax: 051-444 4395  
Cell: 083 357 7982**

20 SEPTEMBER 2007

## **FIRST PHASE ARCHAEOLOGICAL AND CULTURAL HERITAGE INVESTIGATION OF THE PROPOSED RESIDENTIAL DEVELOPMENTS AT BLACKHEATH 1397, (HILL VIEW 1377), BLOEMFONTEIN**

### **EXECUTIVE SUMMARY**

Township developments are planned at the Remainder of Blackheath 1397, (Hill View 1377), Bloemfontein.

No historical or archaeological remains were found in the development area.

I recommend that the proposed developments and planning of the site may proceed.

### **INTRODUCTION AND DESCRIPTION**

#### **INVESTIGATION**

Residential developments are planned the Remainder of Blackheath 1397, (Hill View 1377), west of Bloemfontein.

The site was visited on 5 October 2007 in the company of Dr Johan du Preez of MDA Environmental Consultants, Bloemfontein.

The area was examined for possible archaeological and historical material and to establish the potential impact on any cultural material that might be found. The Heritage Impact Assessment (HIA) is done in terms of the National Heritage Resources Act (NHRA), (25 of 1999) and under the Environmental Conservation Act, (73 of 1989).

## **LOCALITY**

The area for the planned residential developments is located to the west of Bloemfontein (Map 1) (Surveyor General, Bloemfontein).

The locality of the Remainder of Blackheath 1397, (Hill View 1377) is indicated on Map 2. The stand is bordered by Reyneke Avenue in the west and stretches to Fallows Avenue in the east. The terrain consists of flat low lying farm land with natural grass cover (Fig.1&2).

Previous residential developments are found on the property (Fig.3).

The following GPS co-ordinate (Cape scale) was taken (2926AA) on the western border along Reyneke Avenue.

A (west)                      29°04'33"S 026°11'07"E Altitude 1453m.

## **FINDS**

The proposed stand does not contain any remains of archaeological or other material of cultural and historical significance.

## **RECOMMENDATIONS**

There is no obvious reason to delay the commencement of further planning and development of the project.

I recommend that the proposed developments may proceed.

## **MITIGATION**

Concerning the area for the proposed development, no mitigation measures are needed.

## **ACKNOWLEDGEMENTS**

I thank Dr Johan du Preez for taking me to the site.

## **SELECT BIBLIOGRAPHY**

DEACON, J. 1992. Archaeology for Planners, Developers and Local Authorities. Cape Town: National Monuments Council.

DREYER, J. 1996. Introduction to Free State Iron Age Archaeology. In: Guide to archaeological sites in the Free State and Lesotho. Southern African Association of Archaeologists (SA3), 14th Biennial Conference, Bloemfontein, Post-conference tour 5-8 July 1996. Bloemfontein: National Museum.

DREYER, J. 2000. Mountains and Rivers of the Free State - Manual for field research / Berge en Riviere van die Vrystaat – Handleiding vir veldnavorsing. Bloemfontein: University of the Free State, Department of Anthropology, Occasional Paper No. 2.

HUMPHREYS, A.J.B. 1986. Searching for the past. Cape Town: David Philip.

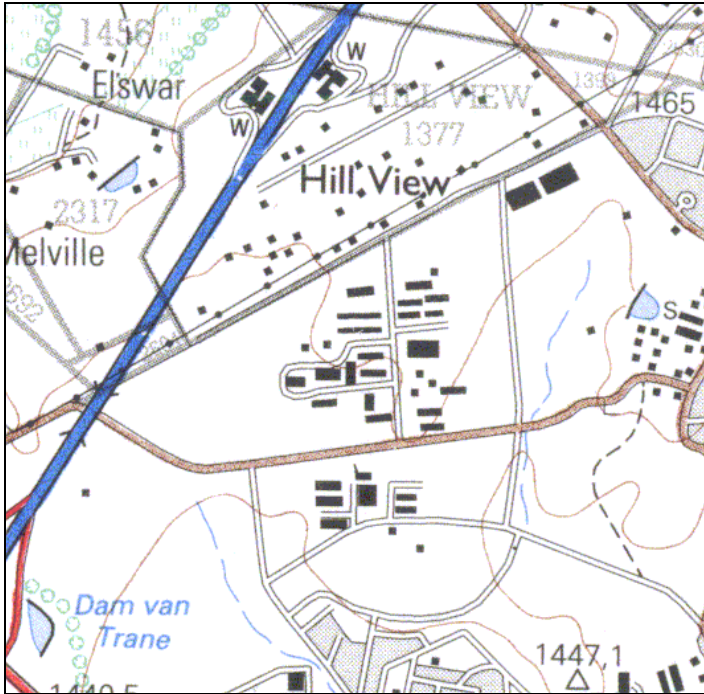
MAGGS, T.M. 1976. Iron Age Communities of the Southern Highveld. Pietermaritzburg: Natal Museum.

PISTORIUS, J.C.C. 1994. Eskom Archaeological Site Identification Guide. Johannesburg: Eskom.

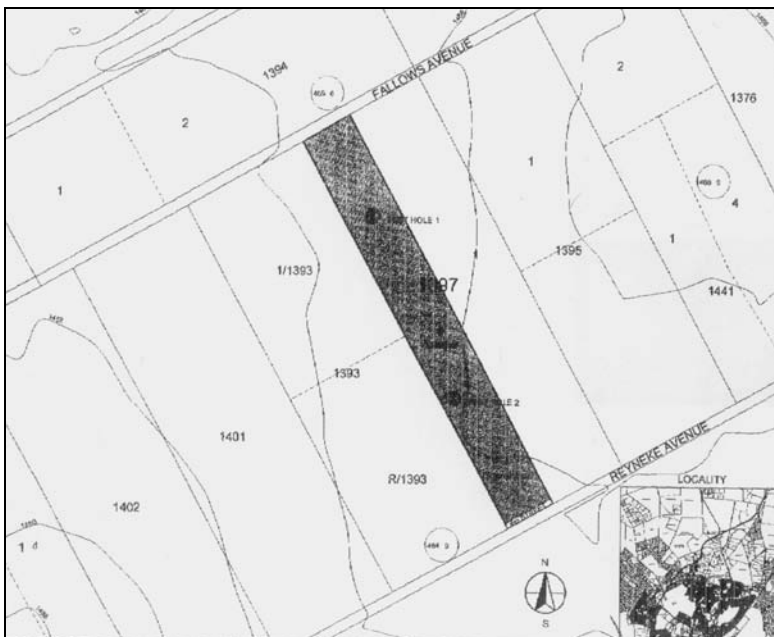
SCHOEMAN, K. 1980. Bloemfontein – die ontstaan van 'n stad. Kaapstad: Human & Rousseau.

SURVEYOR-GENERAL O.F.S. 1973. Index of Orange Free State Farms. Bloemfontein.

**LIST OF ILLUSTRATIONS:**



Map 1 Locality of Blackheath 1397 (Hill View 1377), Bloemfontein (2926AA).



Map 2 Layout of the residential stands at Blackheath 1397 (Hill View 1377), Bloemfontein.



Fig.1 View of the Remainder of Blackheath 1397 (Hill View 1377), Bloemfontein, facing east.



Fig.2 Another view of the Remainder of Blackheath 1397 (Hill View 1377), Bloemfontein.



Fig.3 Existing residence on the Remainder of Blackheath 1397 (Hill View 1377), Bloemfontein.