



# **COBUS DREYER**

**Pr. Archaeologist/Heritage Specialist**

**P.O. Box 12910  
BRANDHOF 9324  
Bloemfontein  
dreyerj@telkomsa.net**

**Tel: 051-444 1187  
Fax: 051-444 4395  
Cell: 083 357 7982**

15 October 2007

## **FIRST PHASE ARCHAEOLOGICAL AND CULTURAL HERITAGE INVESTIGATION OF THE PROPOSED RESIDENTIAL DEVELOPMENTS ON THE ANNEX OF WILDEALSKLOOF 2607, BLOEMFONTEIN**

### **EXECUTIVE SUMMARY**

Residential developments are planned on the Annex of Wildealskloof 2607, along the N1 main road west of Bloemfontein.

The area already contains the Sangiro Lodge and a game camp between the R700 and the N1 main road.

There is no cultural or historical material on the surface.

I recommend that further planning and development of the site may continue.

### **INTRODUCTION AND DESCRIPTION**

#### **INVESTIGATION**

The site for the proposed residential developments on the Annex of the farm Wildealskloof 2607, Bloemfontein, was visited and inspected on 21 August 2007. Dr Johan du Preez of MDA Environmental Consultants, Bloemfontein, took me to the site.

The area was examined for possible archaeological and historical material and to establish the potential impact on any cultural material that might be found. The Heritage Impact Assessment (HIA) is done in terms of the National Heritage Resources Act (NHRA), (25 of 1999) and under the Environmental Conservation Act, (73 of 1989).

## **LOCALITY**

The farm Wildealskloof 2607 is located between the R700 road to Bultfontein and the N1 main road west of Bloemfontein (Map 1) (Surveyor-General 1973).

Apart from the existing Sangiro Lodge, the development will also include about fourteen 1ha to 1,5ha stands and about eighty ordinary residential erven (Map 2).

The area consists of a deep deposit of sterile clay soil (Fig.1).

The following GPS coordinates (Cape scale) were taken (2926AA).

A	29°02'32"S 026°13'37"E Altitude 1372m (Figs.1&2).
B	29°02'24"S 026°13'58"E Altitude 1358m (Figs.3&4).
BOREHOLE	29°02'33"S 026°13'41"E Altitude 1363m (Fig.5).

## **RESULTS**

### **FINDS**

No cultural, historical or palaeontological material was found during the investigation, nor were there any existing buildings, graves or burial grounds in the area.

### **ASSESSMENT OF IMPACT**

Part of the site has already been disturbed by the development of the Sangiro Lodge and game camp (Figs.9&10).

I consider that the development of a residential area will have no impact on the archaeological, cultural or historical heritage of the area.

### **RECOMMENDATIONS**

I recommend that the planning of the proposed residential developments at the Annex of Wildealskloof 2607, outside Bloemfontein, may proceed.

## **MITIGATION**

Concerning the area for the proposed developments, no mitigation measures will be required.

## **ACKNOWLEDGEMENTS**

I thank Dr Johan du Preez of MDA Environmental Consultants, Bloemfontein, for taking me to the site.

## **SELECT BIBLIOGRAPHY:**

DEACON, J. 1992. Archaeology for Planners, Developers and Local Authorities. Cape Town: National Monuments Council.

DREYER, J. 1996. Introduction to Free State Iron Age Archaeology. In: Guide to archaeological sites in the Free State and Lesotho. Southern African Association of Archaeologists (SA3), 14th Biennial Conference, Bloemfontein, Post-conference tour 5-8 July 1996. Bloemfontein: National Museum.

HUMPHREYS, A.J.B. 1986. Searching for the past. Cape Town: David Philip.

MAGGS, T.M. 1976. Iron Age Communities of the Southern Highveld. Pietermaritzburg: Natal Museum.

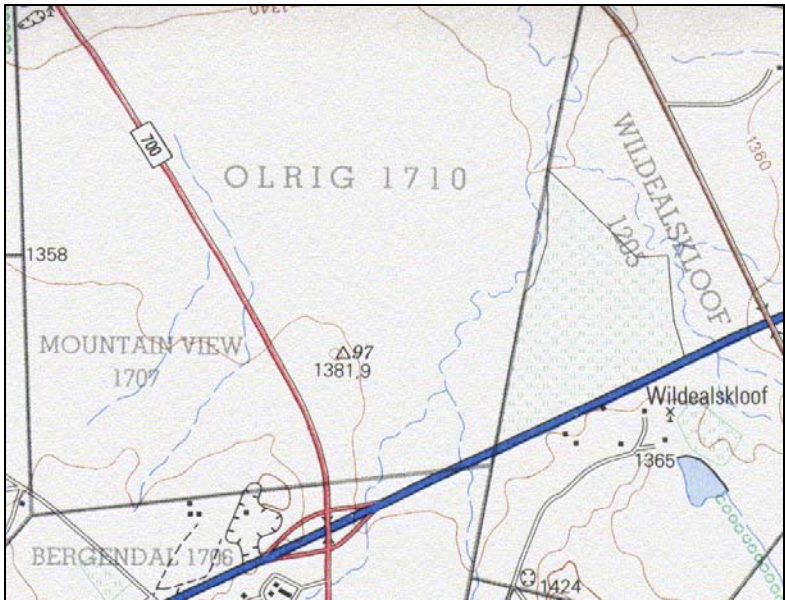
PAKENHAM, T. 1997. The Boer War. Johannesburg: Jonathan Ball.

PISTORIUS, J.C.C. 1994. Eskom Archaeological Site Identification Guide. Johannesburg: Eskom.

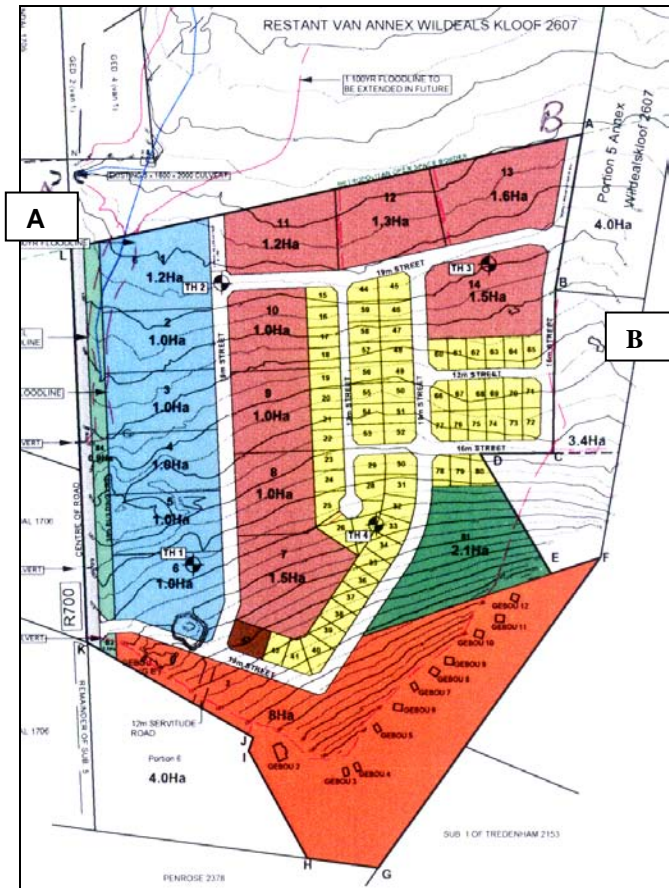
SCHOEMAN, K. 1980. Bloemfontein – die ontstaan van 'n stad. Kaapstad: Human & Rousseau.

SURVEYOR-GENERAL O.F.S. 1973. Index of Orange Free State Farms. Bloemfontein.

# LIST OF ILLUSTRATIONS



Map 1 Locality of the farm Wildealskloof 2607, Bloemfontein.



Map 2 Layout of the proposed residential developments at Annex of Wildealskloof 2607, Bloemfontein.



Fig.1 Point A facing east.



Fig.2 Point A facing south.



Fig.3 Point B facing east.



Fig.4 Point B facing south.



Fig.5 The borehole.



Fig.6 Elegant residential house at the site.



Fig.7 Game viewing hide in the game camp.



Fig.8 The koppie behind the chalets at Sangiro Lodge.





Fig.9 The chalets at Sangiro Lodge.



Fig.10 The entrance gate to Sangiro Lodge outside Bloemfontein.