



COBUS DREYER

Pr. Archaeologist/Heritage Specialist

**P.O. Box 12910
Brandhof
9324
dreyerj@telkomsa.net**

**Tel: 051-444 1187
Fax: 051-444 4395
Cell: 083 357 7982**

25 NOVEMBER 2007

ARCHAEOLOGICAL AND HISTORICAL INVESTIGATION OF THE PROPOSED RESIDENTIAL DEVELOPMENTS ON PORTION 2 OF PLOT 28, RAYTON 431, BLOEMFONTEIN

EXECUTIVE SUMMARY

New residential developments are proposed on Portion 2 of Plot 28 Rayton 431 outside Bloemfontein.

No archaeological and cultural remains were found in the area of development.

I recommend that the proposed developments and planning of the site may proceed.

INTRODUCTION AND DESCRIPTION

INVESTIGATION

The site where residential developments are planned on the Portion 2 of Plot 28, Rayton, Bloemfontein, was visited and inspected on 21 August 2007. Dr Johan du Preez MDA Environmental Consultants, Bloemfontein, took me to the site and indicated the layout and borders of the specific land.

The area was examined for possible archaeological and historical remains and to establish the potential impact on any cultural material that might be found. The Heritage Impact Assessment (HIA) is done in terms of the National Heritage Resources Act (NHRA), (25 of 1999) and under the Environmental Conservation Act, (73 of 1989).

LOCALITY

Residential developments are planned on Portion 2 of Plot 28, Rayton, Bloemfontein (Surveyor-General O.F.S. 1973). The land lies adjacent to De Bruin Street, east of the N1 main road (2926AA) (Maps 1&2).

The following GPS coordinates (Cape scale) were taken (Map 3):

- A 29°04'10"S 026°11'35"E Altitude 1435m (Fig.1).
- B 29°04'14"S 026°11'35"E Altitude 1445m (Fig.2).
- C 29°04'08"S 026°11'30"E Altitude 1440m (Fig.3).
- D 29°04'11"S 026°11'29"E Altitude 1447m) (Fig.4).

The land is grass covered with shrubs and patches of *Rhus ciliata* (Kleinsuurtaibos) (Fig.5). It is probable that this specific kind of vegetation could indicate areas where the soil surface had previously been disturbed.

FINDS

In contrast with previous environmental investigations in this particular region east of Bloemfontein, where a substantial variety of Anglo-Boer War remains were found (Dreyer 2004, Henderson 2004), Portion 2 of Plot 28 Rayton, produced no cultural or historical material.

No cultural, historical or palaeontological components were found during the investigation, nor were there any existing buildings, graves or burial grounds in the area.

IMPACT ASSESSMENT

The proposed housing developments Portion 2, Plot 28 Rayton, will have no impact on any archaeological or cultural heritage remains at the site.

RECOMMENDATIONS

I recommend that the proposed developments at Plot 28 Rayton may proceed.

MITIGATION

Concerning the area for the proposed developments, no mitigation measures will be required.

ACKNOWLEDGEMENTS

I thank Dr Johan du Preez MDA Environmental Consultants, Bloemfontein, for taking me to the site.

SELECT BIBLIOGRAPHY:

BESTER, R. et al. 2003. Small Arms of the Anglo-Boer War 1899-1902. Brandfort. Kraal Publishers.

CLOETE, P.G. 2000. The Anglo-Boer War: - a chronology. Pretoria: JP van der Walt.

DEACON, J. 1992. Archaeology for Planners, Developers and Local Authorities. Cape Town: National Monuments Council.

DREYER, J. 2000. Mountains and Rivers of the Free State - Manual for field research / Berge en Riviere van die Vrystaat – Handleiding vir veldnavorsing. Bloemfontein: University of the Free State, Department of Anthropology, Occasional Paper No. 2.

DREYER, C. 16.8.2004. EIA Report on the archaeological and historical investigation of the proposed Rayton Estate Township, on subdivision 29 of the farm Lilyvale 2913, Bloemfontein. Bloemfontein: Spatial Solutions.

HENDERSON, Z. 2004. Report on the archaeological survey of Subdivision 7, Remainder and Portion of Subdivision 25, of the farm Lilyvale 2313, Bloemfontein. Bloemfontein: National Museum.

HUMPHREYS, A.J.B. 1986. Searching for the past. Cape Town: David Philip.

HOGG, I.V. 1982. The Cartridge Guide. The Small Arms Ammunition Identification Manual. London: Arms & Armour Press. pp. 192.

JONES, H.M. & M.G.M. JONES, 1999. A gazetteer of the second Anglo-Boer War (1899-1902). Buckinghamshire: The Military Press.

MAGGS, T.M. 1976. Iron Age Communities of the Southern Highveld. Pietermaritzburg: Natal Museum.

PAKENHAM, T. 1997. The Boer War. Johannesburg: Jonathan Ball.

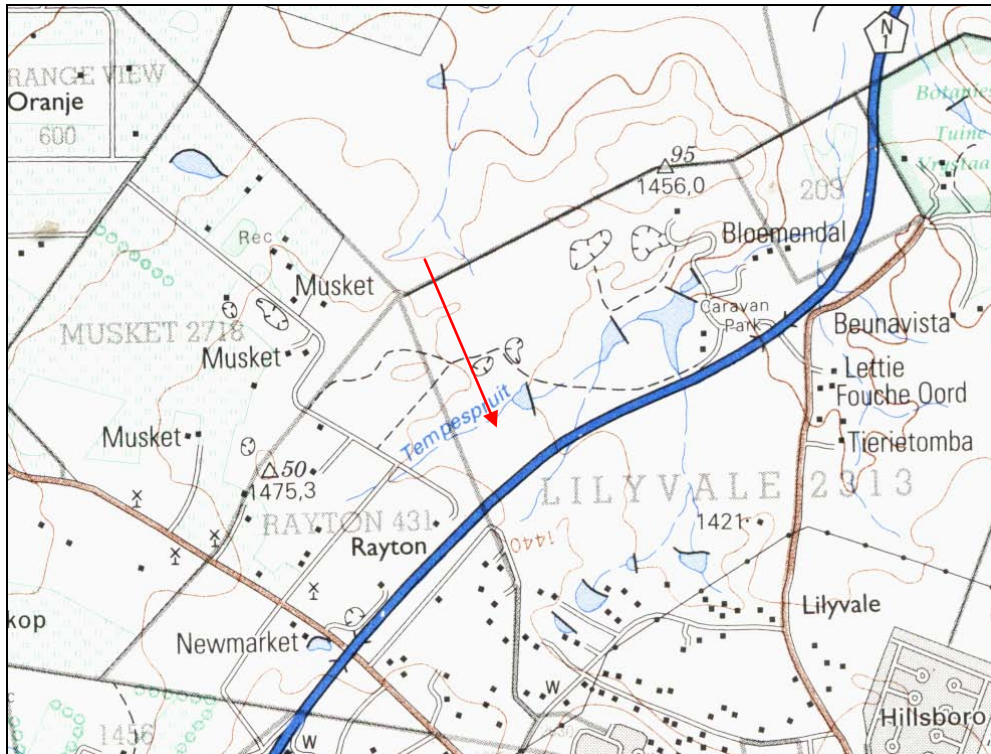
PISTORIUS, J.C.C. 1994. Eskom Archaeological Site Identification Guide. Johannesburg: Eskom.

SCHOEMAN, K. 1980. Bloemfontein – die ontstaan van 'n stad. Kaapstad: Human & Rousseau.

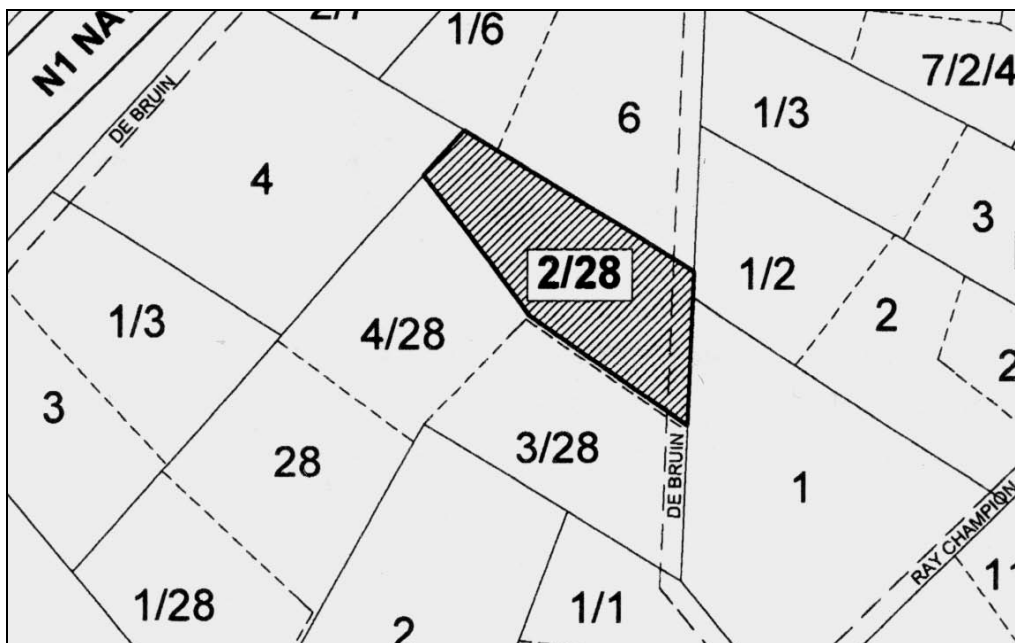
SURVEYOR-GENERAL O.F.S. 1973. Index of Orange Free State Farms. Bloemfontein.

WAR OFFICE. 1915. Treatise on Ammunition. London: His Majesty's Stationary Office. 10th Edition pp.592.

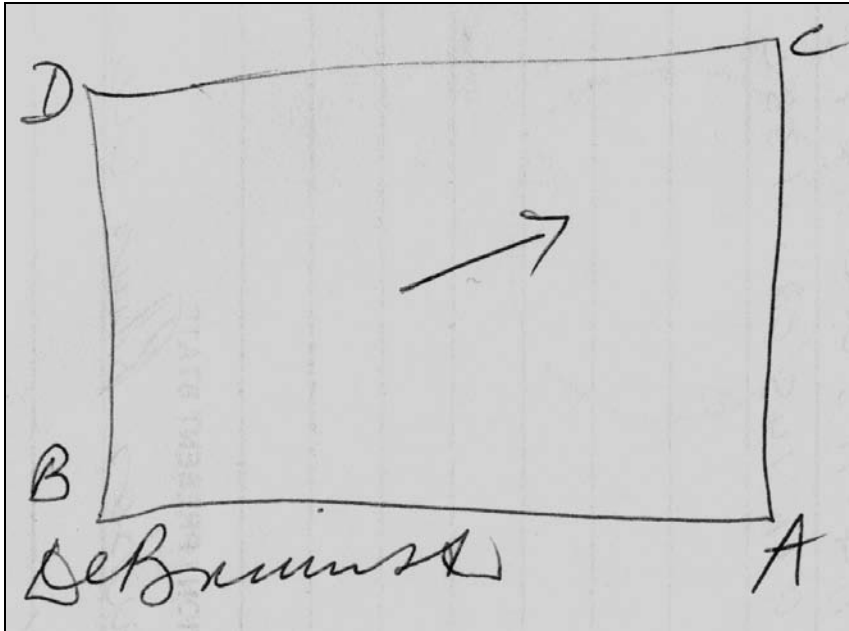
LIST OF ILLUSTRATIONS:



Map 1 Locality of the land adjacent to the N1 (2926AA).



Map 2 Locality of Portion 2 of Plot 28, Rayton 431, Bloemfontein.



Map 3 Placing of the different GPS coordinates.



Fig.1 View from Point A facing west.



Fig.2 View from Point B along De Bruin Street facing towards A.



Fig.3 View from Point C facing south.



Fig.4 View from Point D facing south.



Fig.5 Patches of *Rhus ciliata* (Klein-suurtaibos).