



# **COBUS DREYER**

**Pr. Archaeologist/Heritage Specialist**

**P.O. Box 12910  
BRANDHOF 9324  
Bloemfontein  
dreyerj@telkomsa.net**

**Tel: 051-444 1187  
Fax: 051-444 4395  
Cell: 083 357 7982**

10 July 2008

## **FIRST PHASE ARCHAEOLOGICAL AND HISTORICAL INVESTIGATION OF THE PROPOSED RESIDENTIAL DEVELOPMENTS AT DOUGLAS VALLEY 260, BLOEMFONTEIN**

### **EXECUTIVE SUMMARY**

Residential developments are planned on the farm Douglas Valley 260, Bloemfontein. The portion of land lies west of the extension of Andries Pretorius Avenue outside Bloemfontein.

The developments are planned along the foot slopes of the hill facing the landfill site opposite Northridge Mall.

The area shows signs of previous damage by farming and building activities and no archaeological or other cultural material was found on the soil surface.

There is a cluster of about seventy five graves on the western edge of the land proposed for development. This feature will be separated as an open space and will not be affected by the developments.

A graveyard with about twenty European graves dating between 1897 and 1958 is located towards the eastern border of the farm. This part of the land will likewise be preserved as an open area and the graves will not be affected by the developments.

I recommend that further planning of the residential project may continue.

### **INVESTIGATION**

The site for the proposed residential developments at a portion of the farm Douglas Valley 260, Bloemfontein, was visited and inspected on 30 October

2007 and again on 10 July 2008. Dr Johan Preez and Marguerite Wessels from MDA Environmental Consultants, Bloemfontein, accompanied me to the site.

The area was examined for possible archaeological and historical material and to establish the potential impact on any cultural material that might be found. The Heritage Impact Assessment (HIA) is done in terms of the National Heritage Resources Act (NHRA), (25 of 1999) and under the Environmental Conservation Act, (73 of 1989).

## **LOCALITY**

The farm Douglas Valley 260 is located along the extension of Andries Pretorius Avenue north of Bloemfontein (Map 1) (Surveyor-General O.F.S. 1973).

The land lies along the foot slopes of the hill facing the landfill site and Petra quarry opposite the Northridge Mall (Map 2).

The area consists of a very short grass cover.

The following GPS coordinates (Cape scale) were taken (2926AB). Coordinate points were selected at random to record the extent of the land proposed for development.

<b>A</b>	29°03'56"S. 026°15'26"E. Altitude 1407m (Figs.1-3).
<b>B</b>	29°04'02"S. 026°15'23"E. Altitude 1413m (Figs.4-6).
<b>C</b>	29°03'53"S. 026°15'26"E. Altitude 1415m (Figs.7&8).
<b>D</b>	29°03'55"S. 026°15'17"E. Altitude 1405m (Figs.9&10).
<b>E</b>	29°03'51"S. 026°15'10"E. Altitude 1404m (Figs.11&12).
<b>F</b>	29°04'12"S. 026°15'14"E. Altitude 1404m (Fig.13&14).
<b>G</b>	29°04'16"S. 026°15'15"E. Altitude 1381m (Figs.15&16).
<b>H</b>	29°04'05"S. 026°15'19"E. Altitude 1389m (Fig.17).
<b>J</b>	29°04'32"S. 026°15'41"E. Altitude 1379m (Figs.18&19).
<b>GRAVES</b>	29°04'24"S. 026°15'20"E. Altitude 1387m (Figs.21-24).

## **FINDS**

The land shows signs of previous damage by farming and building activities.

The area seems to be heavily over-grazed (Fig.2) and the soil surface appears sterile with no indication of any archaeological, historical or cultural material was found.

A cluster of about seventy five graves occur on the western boundary of the development (Fig.21) (Map 2). The graves are stone covered and have an aged appearance (Figs.22-24). Some of the graves have headstones (Fig.23) and one contains a military type cross made out of galvanised sheeting (Fig.24). This phenomenon is common in the region and was also found at other graveyards in the vicinity of Bloemfontein (cf. Dreyer 2004a, 2004b, Henderson 2004). There is no indication of the origin and age of the graves, but it is considered that they represent the last resting place of farm labourers from the agricultural holdings and from the farm.

A graveyard with about twenty European graves is located towards the eastern border of the farm (Fig.20). These graves date between 1897 and 1958. This part of the farm will be preserved as an open area and the graves will not be affected by the developments.

## **RECOMMENDATIONS**

According to the town planner the two graveyards will be earmarked as open spaces and will not be affected by the developments.

No obvious reasons could be found to delay further planning and development of the site.

I recommend that the proposed developments may proceed.

## **MITIGATION**

Concerning the area for the proposed developments, mitigation measures will be needed in the case of the two graveyards.

## **ACKNOWLEDGEMENTS**

I thank Dr Johan Preez and Marguerite Wessels of MDA Environmental Consultants, Bloemfontein, for taking me to the site.

**SELECT BIBLIOGRAPHY:**

DEACON, J. 1992. Archaeology for Planners, Developers and Local Authorities. Cape Town: National Monuments Council.

DREYER, C. 2004a. EIA Report on the archaeological and historical investigation of the proposed developments at subdivisions 20 & 24 of the farm Lilyvale 2313, Bloemfontein. Bloemfontein: Spatial Solutions Environmental Consultants.

DREYER, C. 2004b. EIA Report on the archaeological and historical investigation of the proposed Rayton Estate Township, on subdivision 29 of the farm Lilyvale 2913, Bloemfontein. Bloemfontein: Spatial Solutions Environmental Consultants.

DREYER, J. 1996. Introduction to Free State Iron Age Archaeology. In: Guide to archaeological sites in the Free State and Lesotho. Southern African Association of Archaeologists (SA3), 14th Biennial Conference, Bloemfontein, Post-conference tour 5-8 July 1996. Bloemfontein: National Museum.

DREYER, J. 2000. Mountains and Rivers of the Free State - Manual for field research / Berge en Riviere van die Vrystaat – Handleiding vir veldnavorsing. Bloemfontein: University of the Free State, Department of Anthropology, Occasional Paper No. 2.

HENDERSON, Z. 2004. Report on the archaeological survey of Subdivision 7, Remainder and Portion of Subdivision 25, of the farm Lilyvale 2313, Bloemfontein. Bloemfontein: National Museum.

HUMPHREYS, A.J.B. 1986. Searching for the past. Cape Town: David Philip.  
MAGGS, T.M. 1976. Iron Age Communities of the Southern Highveld. Pietermaritzburg: Natal Museum.

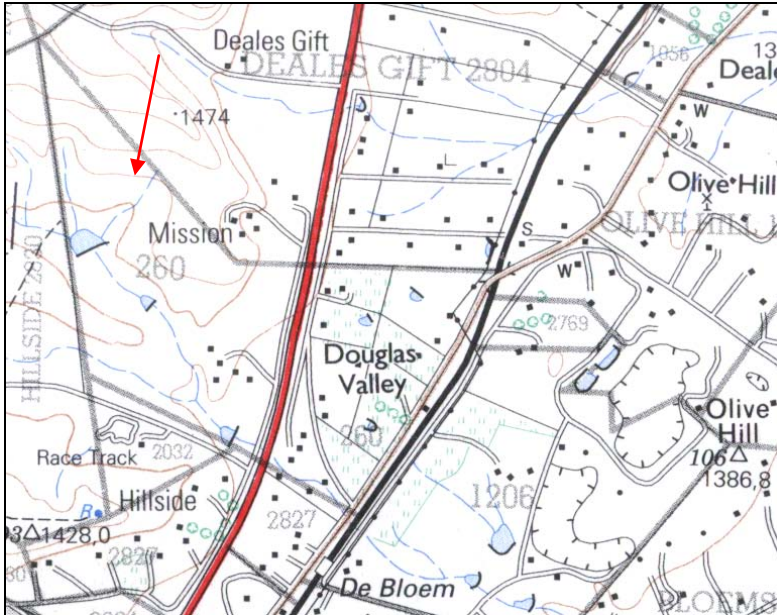
MAGGS, T.M. 1976. Iron Age Communities of the Southern Highveld. Pietermaritzburg: Natal Museum.

PISTORIUS, J.C.C. 1994. Eskom Archaeological Site Identification Guide. Johannesburg: Eskom.

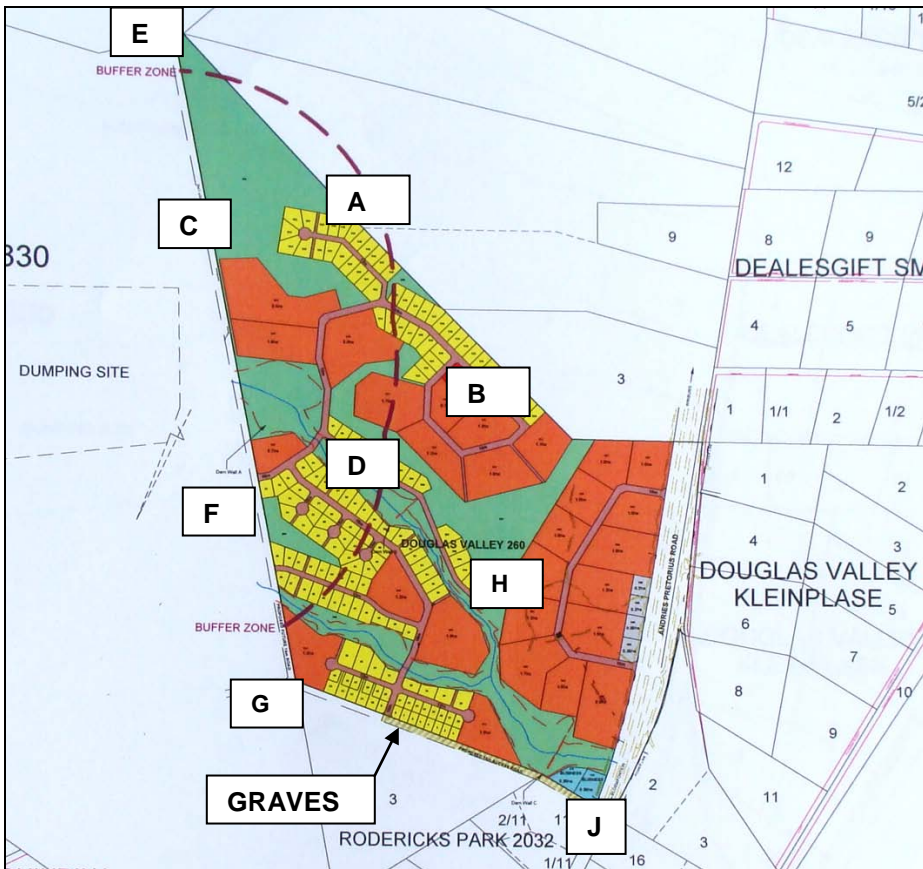
SCHOEMAN, K. 1980. Bloemfontein – die ontstaan van 'n stad. Cape Town: Human & Rousseau.

SURVEYOR-GENERAL O.F.S. 1973. Index of Orange Free State Farms. Bloemfontein.

**LIST OF ILLUSTRATIONS:**



Map 1 Locality of Roderick's Park 2834, Bloemfontein (2926AB).



Map 2 Detail of the proposed township establishment at Douglas Valley 260, Bloemfontein. GPS coordinate points were taken at random.



Fig.1 Point A along the slope of the ridge facing south (Point B).



Fig.2 Point A facing the landfill site opposite Northridge Mall (west).





Fig.3 Point A facing north along the ridge.



Fig.4 Point B facing north towards Point A.



Fig.5 Point B facing the landfill site (west).



Fig.6 Rocky hill at Point B.





Fig.7 Point C facing Point A.



Fig.8 Point C facing the landfill site.



Fig.9 Point D facing along the ridge.



Fig.10 Point D facing south.



Fig.11 Point E facing the landfill site.



Fig.12 Point E facing south.





Fig.13 Point F facing Point E (north).



Fig.14 Point F facing south.





Fig.15 Point G facing south.



Fig.16 Point G facing the Northridge Mall.



Fig.17 Point H.



Fig.18 Point J facing parallel with Andries Pretorius Avenue.



Fig.19 Point J facing north along the border of the land.



Fig.20 Graveyard east of the ridge.





Fig.21 Cluster of graves among the shrubs between Point G and Point J.



Fig.22 Stone covered grave.





Fig.23 Stone covered grave with headstone.



Fig.24 Grave with metal cross made from galvanized sheeting.