



COBUS DREYER

Pr. Archaeologist/Heritage Specialist

**P.O. Box 12910
Brandhof
9324
dreyerj@telkomsa.net**

**Tel: 051-444 1187
Fax: 051-444 4395
Cell: 083 357 7982**

23 October 2006

FIRST PHASE ARCHAEOLOGICAL AND CULTURAL HERITAGE INVESTIGATION OF THE PROPOSED RESIDENTIAL DEVELOPMENTS ON SUBDIVISION 2 OF THE FARM BERGKRAAL 2213, BLOEMFONTEIN

EXECUTIVE SUMMARY

The proposed residential developments are planned on Subdivision 2 of the farm Bergkraal 2213, Bloemfontein.

The area contains old plough lands and irrigation fields and contains no cultural or historical material.

I recommend that further planning and development of the site could continue.

INTRODUCTION AND DESCRIPTION

INVESTIGATION

The site for the proposed residential developments on Subdivision 2 of the farm Bergkraal 2213, Bloemfontein, was visited on 20 October 2006. I was taken to the farm by Dr Johan du Preez of MDA Environmental Consultants, Bloemfontein.

The area was examined for possible archaeological and historical material and to establish the potential impact on any cultural material that might be found. The Heritage Impact Assessment (HIA) is done in terms of the National Heritage Resources Act (NHRA), (25 of 1999) and under the Environmental Conservation Act, (73 of 1989).

LOCALITY

The farm Bergkraal 2213, Bloemfontein, is located near Maselspoort on a flood plain on northern bank of the Modder River (Map 1) (Surveyor-General 1973).

The two areas of development will cover 20,9ha and 73,9ha respectively.

The following GPS coordinate (Cape scale) was taken (2926BB).

27°02'11"S 026°26'04"E Altitude 1307m (Figs.1-4).

RESULTS

FINDS

The areas of development on Subdivision 2 of Bergkraal 2213, near Maselspoort, are covered with old plough lands and irrigation fields and contains no cultural or historical material.

ASSESSMENT OF IMPACT

The site has already been disturbed by the ploughing and irrigation of the fields and other farm activities over many years.

The development of a residential area will have no impact on the archaeological, cultural or historical heritage of the area.

RECOMMENDATIONS

I recommend that the proposed residential developments at Bergkraal 2213, near Maselspoort may proceed.

MITIGATION

Concerning the area for the proposed developments, no mitigation measures will be required.

No obvious reasons could be found to delay the commencement of further planning and development of the site.

I recommend that the proposed developments may proceed.

ACKNOWLEDGEMENTS

I thank Dr Johan du Preez of MDA Environmental Consultants, Bloemfontein, for taking me to the site.

SELECT BIBLIOGRAPHY:

DEACON, J. 1992. Archaeology for Planners, Developers and Local Authorities. Cape Town: National Monuments Council.

DREYER, J. 1996. Introduction to Free State Iron Age Archaeology. In: Guide to archaeological sites in the Free State and Lesotho. Southern African Association of Archaeologists (SA3), 14th Biennial Conference, Bloemfontein, Post-conference tour 5-8 July 1996. Bloemfontein: National Museum.

DREYER, J. 2000. Mountains and Rivers of the Free State - Manual for field research / Berge en Riviere van die Vrystaat – Handleiding vir veldnavorsing. Bloemfontein: University of the Free State, Department of Anthropology, Occasional Paper No. 2.

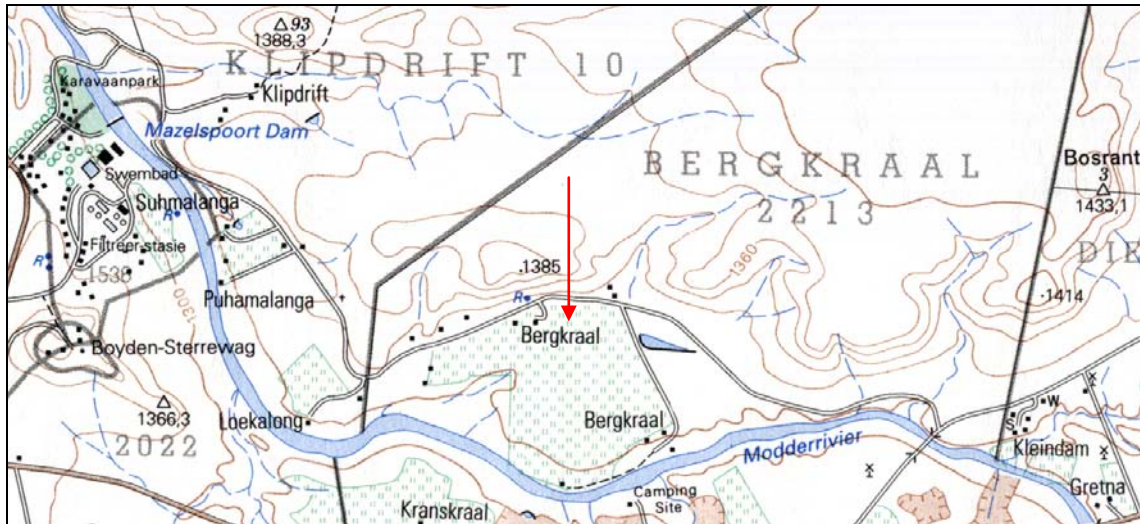
HUMPHREYS, A.J.B. 1986. Searching for the past. Cape Town: David Philip.

MAGGS, T.M. 1976. Iron Age Communities of the Southern Highveld. Pietermaritzburg: Natal Museum.

PISTORIUS, J.C.C. 1994. Eskom Archaeological Site Identification Guide. Johannesburg: Eskom.

SURVEYOR-GENERAL O.F.S. 1973. Index of Orange Free State Farms. Bloemfontein.

LIST OF ILLUSTRATIONS:



Map 1 Locality of the proposed developments on Bergkraal 2213, Bloemfontein.



Fig.1 View of the proposed area of development at Bergkraal 2213, Bloemfontein.



Fig.2 The proposed area of development facing towards the Modder River.



Fig.3 The proposed area of development on Bergkraal 2213, Bloemfontein.



Fig.4 Another view the area of development.