



COBUS DREYER

Pr. Archaeologist/Heritage Specialist

**P.O. Box 12910
BRANDHOF
9324
Bloemfontein
dreyerj@telkomsa.net**

**Tel: 051-444 1187
Fax: 051-444 4395
Cell: 083 357 7982**

5 October 2007

FIRST PHASE ARCHAEOLOGICAL AND CULTURAL HERITAGE INVESTIGATION OF THE PROPOSED RESIDENTIAL DEVELOPMENTS ON THE REMAINDER OF THE FARM BERGKRAAL 2213, BLOEMFONTEIN

EXECUTIVE SUMMARY

The proposed residential developments are planned on the Remainder of Bergkraal 2213, Bloemfontein.

The area lies along the Modder River. Part of the land lies on an alluvial sand deposit and on a higher rocky surface. The only cultural or historical material consists of a few scattered stone flakes and chips, which I recon are of minor significance.

An old steel bridge that used to be part of the main road to Winburg via Verkeerdevlei is in a bad neglected state, but will not be affected by the new developments.

I recommend that further planning and development of the site could continue.

INTRODUCTION AND DESCRIPTION

INVESTIGATION

The site for the proposed residential developments on the Remainder of the farm Bergkraal 2213, Bloemfontein, was visited on 21 August 2007. I was taken to the farm by Dr Johan du Preez of MDA Environmental Consultants, Bloemfontein.

The area was examined for possible archaeological and historical material and to establish the potential impact on any cultural material that might be found. The Heritage Impact Assessment (HIA) is done in terms of the National Heritage

Resources Act (NHRA), (25 of 1999) and under the Environmental Conservation Act, (73 of 1989).

LOCALITY

The farm Bergkraal 2213, Bloemfontein, is located about 20km from Bloemfontein, east of Maselspoort on a flood plain on the northern bank of the Modder River (Map 1) (Surveyor-General 1973).

The area of development will include a leisure residential unit consisting of 15 sectional titles.

The following GPS coordinates (Cape scale) were taken (2926AB).

- A 29°02'33"S 026°27'06"E Altitude 1307m (Figs.1-2).
- B 29°02'32"S 026°27'05"E Altitude 1307m.
- C 29°02'26"S 026°26'30"E Altitude 1303m (Figs.3-6).

RESULTS

FINDS

The area of development contains only a small scatter of stone flakes on the surface near Point A (Fig.).

The old bridge across the Modder River possibly represents the earliest road to Verkeerdevlei and Winburg (Figs.8-10). The bridge is in a poor condition at present and is not in use any more.

No other cultural and historical material could be found.

ASSESSMENT OF IMPACT

Part of the site has already been disturbed by an alluvial sand deposit on the river bank.

The old bridge across the Modder River will not be affected by the new developments.

I consider that the development of a residential area will have a minor impact on the archaeological, cultural or historical heritage of the area.

RECOMMENDATIONS

I recommend that the proposed residential developments at the Remainder of Bergkraal 2213, near Maselspoort may proceed.

MITIGATION

Concerning the area for the proposed developments, no mitigation measures will be required.

ACKNOWLEDGEMENTS

I thank Dr Johan du Preez of MDA Environmental Consultants, Bloemfontein, for taking me to the site.

SELECT BIBLIOGRAPHY:

DEACON, J. 1992. Archaeology for Planners, Developers and Local Authorities. Cape Town: National Monuments Council.

DREYER, J. 1996. Introduction to Free State Iron Age Archaeology. In: Guide to archaeological sites in the Free State and Lesotho. Southern African Association of Archaeologists (SA3), 14th Biennial Conference, Bloemfontein, Post-conference tour 5-8 July 1996. Bloemfontein: National Museum.

DREYER, J. 2000. Mountains and Rivers of the Free State - Manual for field research / Berge en Riviere van die Vrystaat – Handleiding vir veldnavorsing. Bloemfontein: University of the Free State, Department of Anthropology, Occasional Paper No. 2.

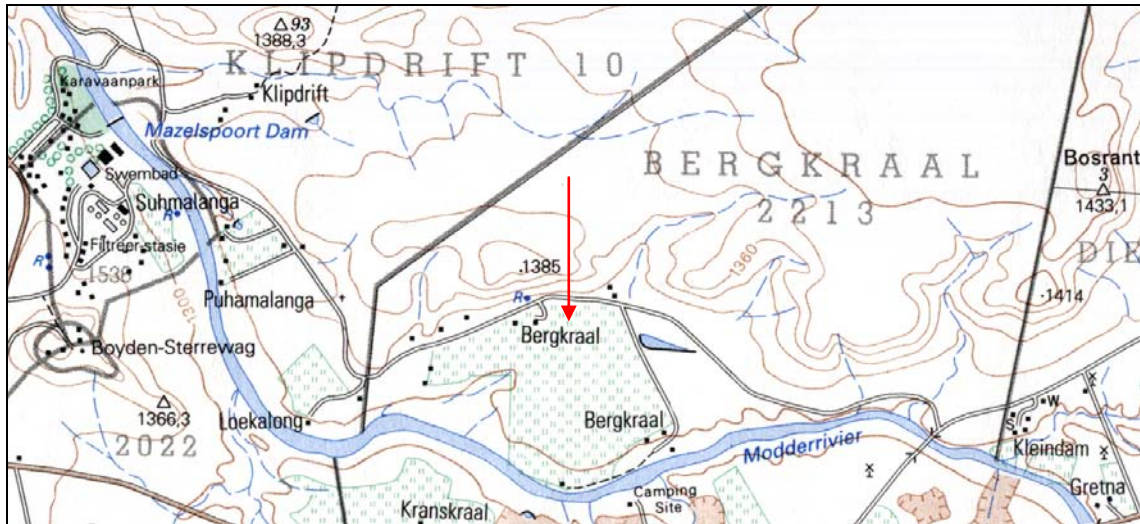
HUMPHREYS, A.J.B. 1986. Searching for the past. Cape Town: David Philip.

MAGGS, T.M. 1976. Iron Age Communities of the Southern Highveld. Pietermaritzburg: Natal Museum.

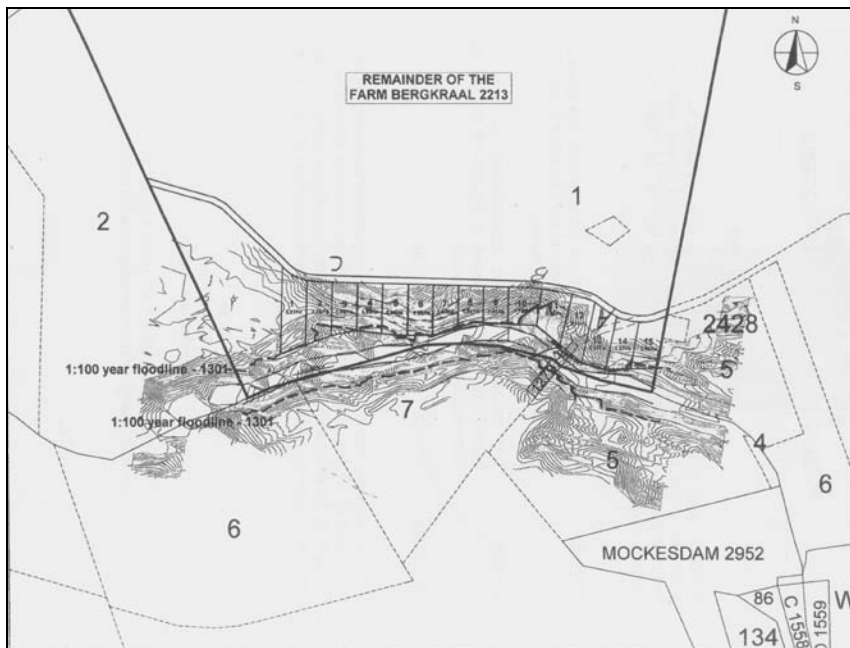
PISTORIUS, J.C.C. 1994. Eskom Archaeological Site Identification Guide. Johannesburg: Eskom.

SURVEYOR-GENERAL O.F.S. 1973. Index of Orange Free State Farms. Bloemfontein.

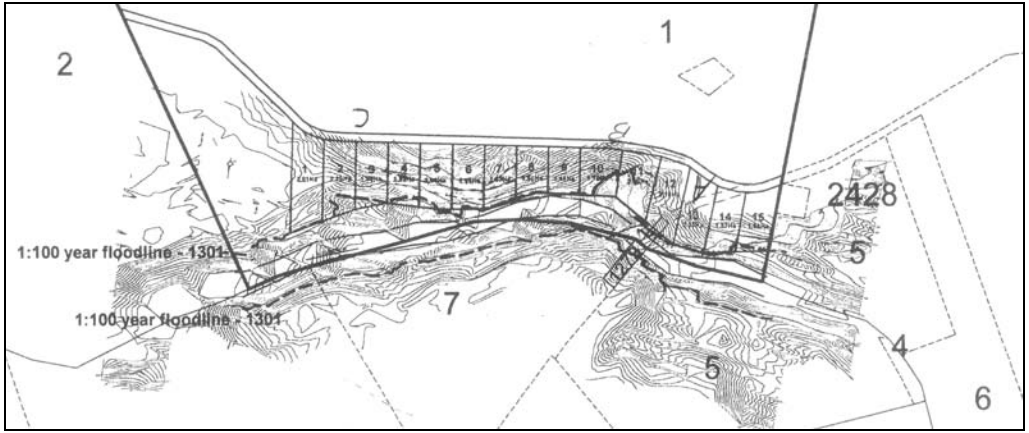
LIST OF ILLUSTRATIONS:



Map 1 Locality of the proposed developments on Bergkraal 2213, Bloemfontein (2926AB).



Map 2 Locality of the developments along the Modder River.



Map 3 Developments at the Remainder of the farm Bergkraal 2213, Bloemfontein.



Fig.1 Point A at Bergkraal, facing south towards Phillip Saunders Resort.



Fig.2 Point A facing west along the Modder River.



Fig.3 Point C The proposed area of development on Bergkraal 2213, Bloemfontein.



Fig.4 Point C facing north.



Fig.5 Point C facing west.



Fig.6 Point C facing south



Fig.7 North bank of the Modder River as seen from the old bridge.



Fig.8 Old bridge across the Modder River on the way to Verkeerdevlei.



Fig.9 Old bridge across the Modder River on the way to Verkeerdevlei.



Fig.10 Badge of the manufacturer on the bridge. J. Kay, 41 Kellner St. Bloemfontein.



Fig.11 Stone flakes and upper grinding stone found near point A. (Pocket-knife = 83mm).