



# **COBUS DREYER**

**Pr. Archaeologist/Heritage Specialist**

**P.O. Box 12910  
BRANDHOF 9324  
Bloemfontein  
dreyerj@telkomsa.net**

**Tel: 051-444 1187  
Fax: 051-444 4395  
Cell: 083 357 7982**

25 FEBRUARY 2008

**FIRST PHASE ARCHAEOLOGICAL AND CULTURAL HERITAGE  
ASSESSMENT OF THE PROPOSED LEISURE RESIDENTIAL  
DEVELOPMENTS AT THE FARMS SERFONTEINSHOOP 43,  
NAPIER 662 & GARVOCH 367,  
BOSHOF, FREE STATE**

## **EXECUTIVE SUMMARY**

Leisure residential developments are planned on the farms Serfonteinshoop 43, Napier 662 and Garvoch 367, Boshof District, Free State.

The proposed areas contain red sandy soil and are brush and thorn bush covered.

A scatter of heavily patinated Later Stone Age flakes was collected on the surface in one specific area. I consider the scatter of flakes as a general occurrence, which seems to be of minor significance. No other archaeological and cultural remains occurred.

I recommend that the planning and development of the mining activities may proceed.

## **INTRODUCTION AND DESCRIPTION**

### **INVESTIGATION**

The farms Serfonteinshoop 43, Napier 662 and Garvoch 367, Boshof District, Free State were visited on 15 August 2007. Dr Johan du Preez from MDA Environmental Consultants, Bloemfontein, took me to the sites.

The area was examined for possible archaeological and historical material and to establish the potential impact on any cultural material that might be found. The Heritage Impact Assessment (HIA) is done in terms of the National Heritage Resources Act (NHRA), (25 of 1999) and under the Environmental Conservation Act, (73 of 1989).

## LOCALITY

The farms Serfonteinshoop 43, Napier 662 and Garvoch 367 are situated in the Boshof District, Free State, along the R64 main route from Boshof to Kimberley (Map 1).

The relation between the farms Serfonteinshoop 43 and Napier 662 are indicated on Map 2 and the position of Garvoch 367 is shown on Map 3.

Vegetation is mainly limited to *Eragrostis* grassland (Fig.8) with Haak-en-Steek (*Acacia tortilis*) and Kanferbos (*Tarchonanthus camphoratus*) shrubs (Figs.5&6).

The soil consists of red sterile sand (Fig.1) alternated by rocky outcrops (Fig.6).

The following GPS coordinates (Cape scale) were taken (2824DB & 2825CA) (Surveyor-General 1973):

Lodge	28°39'36"S 024°59'57"E	Altitude 1316m (Figs.1&2).
A	28°39'57"S 024°58'20"E	Altitude 1325m (Fig.3).
B	28°39'58"S 024°57'16"E	Altitude 1313m (Fig.4).
C	28°39'48"S 024°58'18"E	Altitude 1302m (Figs.5&6)
Napier Farm Yard	28°39'36"S 024°59'57"E	Altitude 1316m (Fig.7).
E (Garvoch)	28°40'10"S 025°00'27"E	Altitude 1346m (Fig.8).

## RESULTS

### FINDS

A collection of stone flakes (Fig.10) was made in the area near Point B. The flakes are heavily patinated. Points have convergent edges (Fig.11) and single or multiple flaking on the dorsal side. Percussion bulbs are clearly recognisable in

most cases. Prepared platforms are narrow and bent and are either faceted or plain. Through the application of standard tool typology and basic characteristics, the material could arbitrarily be classified as Middle Stone Age.

No other archaeological or cultural remains could be found on any other site.

## **IMPACT ASSESSMENT**

The stone flakes seem to be a general scatter in a specific area and does need seem to be of great significance.

I judge that the development of a residential area will have a minor impact on the archaeological, cultural or historical heritage of the area.

## **RECOMMENDATIONS**

There are no obvious reasons to delay the commencement of further planning of the residential developments and I recommend that the work may proceed.

It is stressed that every archaeological and historical site is unique and should be treated as a non-renewable commodity. All efforts should be made to avoid any unnecessary disturbance or destruction of the area. It is important, however, that the field team should be attentive for the presence of human skeletal remains or other archaeological material of significance during the course of the work. In the case of the discovery of any burial or human relics, all excavation activities should temporarily be stopped in the specific area and the finds should be stabilised and protected and the archaeologist should be alerted immediately.

## **MITIGATION**

Concerning the areas for the proposed extensions, no mitigation measures will be required.

## **ACKNOWLEDGEMENTS**

I thank Dr Johan du Preez of MDA Environmental Consultants, Bloemfontein, for taking me to the sites.

**SELECT BIBLIOGRAPHY:**

BEAUMONT, P.B. & VOGEL, J.C. 1989. Patterns in the age and context of rock art in the Northern Cape. *South African Archaeological Bulletin* 44(150):73-81.

BEAUMONT, P.B., SMITH, A.B. & VOGEL, J.C. 1995. Before the Einiqua: the archaeology of the frontier zone. In Smith, A.B. (Ed.). *Einiqualand: Studies of the Orange River Frontier*. Cape Town: University of Cape Town Press.

BREUTZ, P.-L. 1953. *The Tribes of Rustenburg and Pilansberg Districts*. Pretoria. Department of Native Affairs. *Ethnological Publications No.28*.

BREUTZ, P.L. 1954. *The Tribes of the Marico District*. Pretoria. Department of Native Affairs. *Ethnological Publications No.30*.

BREUTZ, P.-L. 1955. *The Tribes of Mafeking District*. Pretoria. Department of Native Affairs. *Ethnological Publications No.32*.

BREUTZ, P.-L. 1957. *Die Stamme van die Distrikte Lichtenburg en Dalareyville*. Pretoria. Departement van Naturelle Sake. *Etnologiese Reeks Nr.37*.

BREUTZ, P.L. 1959. *The Tribes of Vryburg District*. Pretoria. Department of Native Affairs. *Ethnological Publications No.46*.

BREUTZ, P.-L. 1963. *The Tribes of the Districts of Kuruman and Postmasburg*. Pretoria. Department of Native Affairs. *Ethnological Publications No.49*.

DEACON, J. 1992. *Archaeology for Planners, Developers and Local Authorities*. Cape Town: National Monuments Council.

HUMPHREYS, A.J.B. 1986. *Searching for the past*. Cape Town: David Philip.

PISTORIUS, J.C.C. 1994. *Eskom Archaeological Site Identification Guide*. Johannesburg: Eskom.

MORRIS, D. 1988. Engraved in place and time: a review of variability in the rock art of the Northern Cape and Karoo. *South African Archaeological Bulletin* 43(148):109-121.

MORRIS, D. 1990a. 'Etchings' and 'Intaglios' in the Upper Karoo: Part 1: The engravings at Springbok Oog. In Beaumont, P.B. & Morris, D. *Guide to archaeological sites in the Northern Cape*. Kimberley: McGregor Museum.

MORRIS, D. 1990b. 'Etchings' and 'Intaglios' in the Upper Karoo: Part 2: Engravings on Jagtpan and adjacent farms. In Beaumont, P.B. & Morris, D. *Guide to archaeological sites in the Northern Cape*. Kimberley: McGregor Museum.

PISTORIUS, J.C.C. 1994. *Eskom Archaeological Site Identification Guide*. Johannesburg: Eskom.

ROSENTHAL, E. (n.d.). *The River of Diamonds*. Cape Town: Howard Timmins.

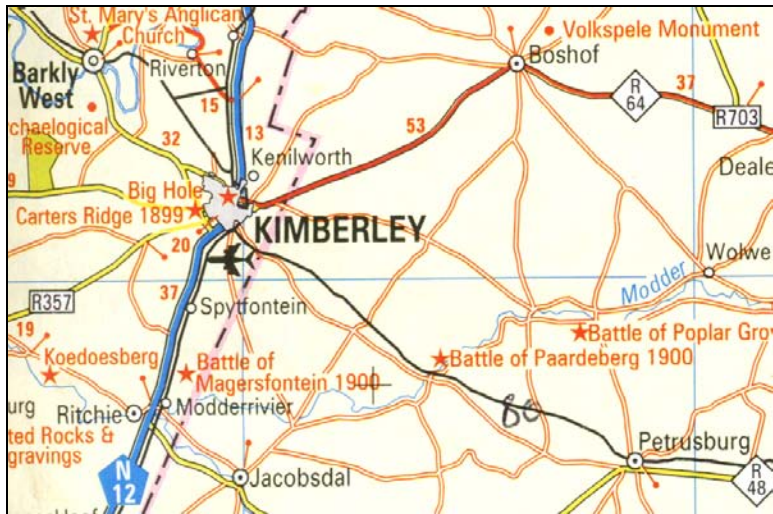
SMITH, A.B. (Ed.). 1995. *Einiqualand: Studies of the Orange River Frontier*. Cape Town: UCT Press.

SOHNGE, P.G. VISSER, D.J.L. AND VAN RIET LOWE, C. 1937. *The geology and archaeology of the Vaal River Basin*. Pretoria: Government Printer.

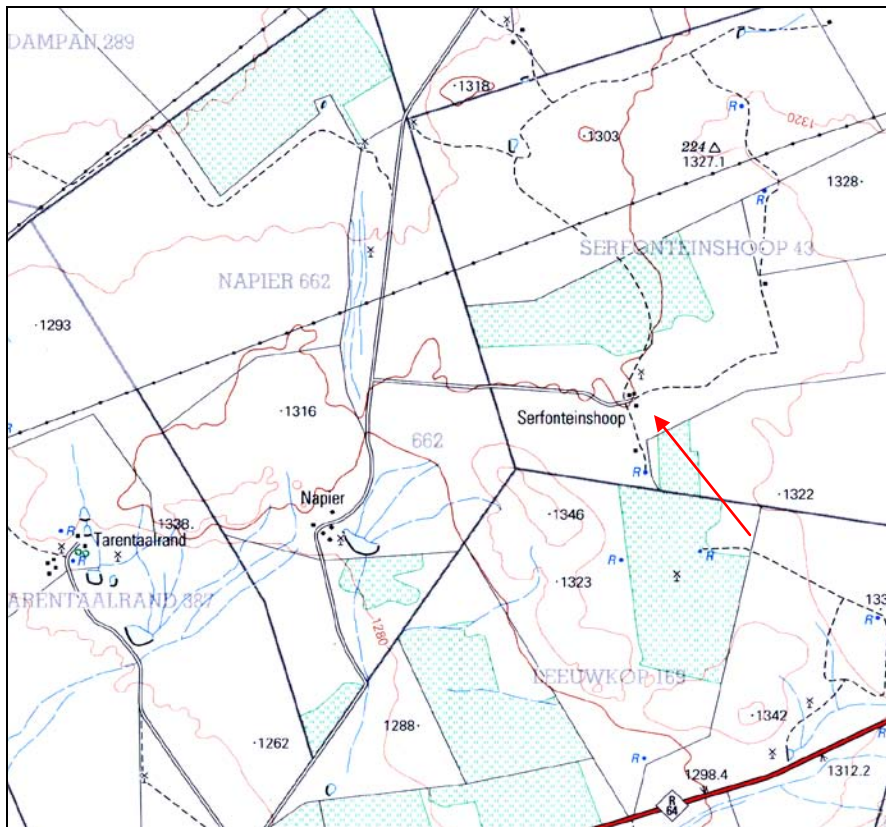
SURVEYOR-GENERAL O.F.S. 1973. *Index of Orange Free State Farms*. Bloemfontein.

VAN HEERDEN, P.S. 1908. *Herinneringin uit den tyd der Vrystaatshe Voortrekkers*. Stellenbosch: Pro Ecclesia Drukkery.

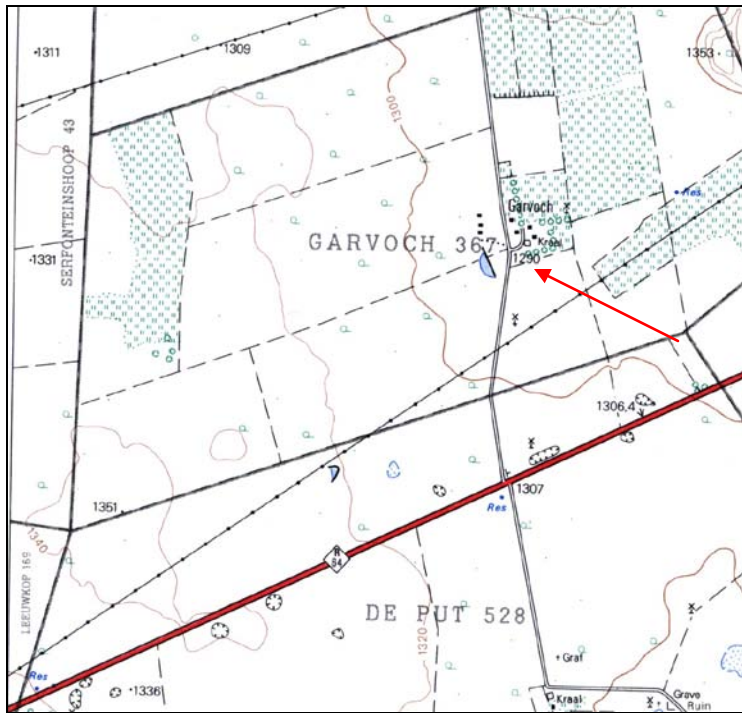
## LIST OF ILLUSTRATIONS



Map 1 Boshof in relation to Kimberley and other surrounding towns.



Map 2 Locality of Serfonteinshoop 43 and Napier near the R64 between Boshof and Kimberley (2824DB).



Map 3 Locality of Garvoch 367 near the R64 between Boshof and Kimberley (2825CA).



Map 4 Proposed layout of the leisure residential developments at Serfonteinshoop 43, Napier 662 & Garvoch 367, Boshof.





Fig.1 Existing lodge at Serfonteinshoop 43, Boshof.



Fig.2 Erioloba trees near the existing lodge at Serfonteinshoop 43, Boshof.



Fig.3 Point A at at Serfonteinshoop 43, Boshof.



Fig.4 Point B at Serfonteinshoop 43, Boshof.





Fig.5 Point C at Serfonteinshoop 43, Boshof.



Fig.6 Vegetation at Point C, Serfonteinshoop 43, Boshof..



Fig.7 Napier 662 farm yard near Boshof.



Fig.8 Dense grass cover at Garvoch 367, Boshof.





Fig.9 Elegant Erioloba tree along the game fence at Garvoch 367, Boshof.



Fig.10 A collection of scattered flakes and scrapers was found on the surface near Point B. (Pocket knife = 83mm).



Fig.11 A single large prepared flake from the area near Point B. (Pocket knife = 83mm).