



# **COBUS DREYER**

**Pr. Archaeologist/Heritage Specialist**

**P.O. Box 12910  
Brandhof  
9324  
dreyerj@telkomsa.net**

**Tel: 051-444 1187  
Fax: 051-444 4395  
Cell: 083 357 7982**

4 April 2008

## **FIRST PHASE ARCHAEOLOGICAL AND CULTURAL HERITAGE INVESTIGATION OF THE PROPOSED HLANGANA GROOT RIVIER ESTATE, BOSHOF, FREE STATE**

### **EXECUTIVE SUMMARY**

The Hlangana Groot Rivier Estate will be developed on the farms Kareedraai 1043, Eiland Drif 763 and Idaho 1059 along the Vaal River in the district of Boshof, Free State.

The area along the Vaal River consists of an alluvial deposit which had already been disturbed by extensive agricultural activities. The land contains no cultural or historical material.

I recommend that further planning and development of the site could continue.

### **INTRODUCTION AND DESCRIPTION**

#### **INVESTIGATION**

The farms Kareedraai 1043, Eiland Drif 763 and Idaho 1059 along the Vaal River in the Boshof district, Free State, were visited on 17 April 2007 and 14 June 2007 in the company of Dr Johan du Preez of MDA Environmental Consultants, Bloemfontein. At the farm we were accompanied by Mr Philip Buys.

The area was examined for possible archaeological and historical material and to establish the potential impact on any cultural material that might be found. The Heritage Impact Assessment (HIA) is done in terms of the National Heritage Resources Act (NHRA), (25 of 1999) and under the Environmental Conservation Act, (73 of 1989).

## LOCALITY

The farms Kareedraai 1043, Eiland Drif 763 and Idaho 1059, proposed for the Hlangana Groot Rivier Estate, are located along the Vaal River (Map 2) in the district of Boshof, Free State. (Map 1) (Surveyor-General 1973).

Residential areas consisting of 480 stands are planned.

The following GPS coordinates (Cape scale) were taken (2725CD).

Eiland Drif	27°49'39"S 025°15'57"E Altitude 1217m (Fig.1).
River bank	27°49'03"S 025°15'55"E Altitude 1208m (Fig.2).
Fresh water spring	27°49'11"S 025°15'53"E Altitude 1208m (Fig.3).
Water pump house	27°49'50"S 025°14'39"E Altitude 1203m (Fig.4).
Border Fence	27°49'36"S 025°15'18"E Altitude 1202m (Fig.5).
Labourer's Huts	27°49'36"S 025°15'40"E Altitude 1217m (Fig.6).
Border Eiland D/Idaho	27°49'18"S 025°16'12"E Altitude 1216m (Fig.7).
Weir	27°49'02"S 025°15'55"E Altitude 1200m (Fig.8).
Northern End	27°48'00"S 025°16'19"E Altitude 1198m (Fig.9).
Eastern corner/Road	27°48'11"S 025°16'29"E Altitude 1206m (Fig.10).

## RESULTS

### FINDS

The area along the Vaal River consists of an alluvial sand deposit on an old flood plain which had already been disturbed by extensive agricultural activities (Fig.11).

The land did not produce any archaeological or cultural historical material.

## **ASSESSMENT OF IMPACT**

The site has already been disturbed by extensive agricultural activities (Fig.11) and the development of the Hlangana Groot Rivier Estate will have no impact on the cultural or historical heritage of the land or the area.

## **RECOMMENDATIONS**

I recommend that the proposed developments at the Hlangana Groot Rivier Estate along the Vaal River may proceed.

## **MITIGATION**

Concerning the area for the proposed developments, no mitigation measures will be required.

No obvious reasons could be found to delay the commencement of further planning and development of the site.

## **ACKNOWLEDGEMENTS**

I thank Dr Johan du Preez of MDA Environmental Consultants, Bloemfontein, for taking me to the site.

**SELECT BIBLIOGRAPHY:**

BEAUMONT, P.B. & VOGEL, J.C. 1989. Patterns in the age and context of rock art in the Northern Cape. *South African Archaeological Bulletin* 44(150):73-81.

BEAUMONT, P.B., SMITH, A.B. & VOGEL, J.C. 1995. Before the Einiqua: the archaeology of the frontier zone. In Smith, A.B. (Ed.). *Einiqualand: Studies of the Orange River Frontier*. Cape Town: University of Cape Town Press.

BREUTZ, P.-L. 1953. *The Tribes of Rustenburg and Pilansberg Districts*. Pretoria. Department of Native Affairs. *Ethnological Publications No.28*.

BREUTZ, P.L. 1954. *The Tribes of the Marico District*. Pretoria. Department of Native Affairs. *Ethnological Publications No.30*.

BREUTZ, P.-L. 1955. *The Tribes of Mafeking District*. Pretoria. Department of Native Affairs. *Ethnological Publications No.32*.

BREUTZ, P.-L. 1957. *Die Stamme van die Distrikte Lichtenburg en Dalareyville*. Pretoria. Departement van Naturelle Sake. *Etnologiese Reeks Nr.37*.

BREUTZ, P.L. 1959. *The Tribes of Vryburg District*. Pretoria. Department of Native Affairs. *Ethnological Publications No.46*.

BREUTZ, P.-L. 1963. *The Tribes of the Districts of Kuruman and Postmasburg*. Pretoria. Department of Native Affairs. *Ethnological Publications No.49*.

DEACON, J. 1992. *Archaeology for Planners, Developers and Local Authorities*. Cape Town: National Monuments Council.

DREYER, J. 1996. Introduction to Free State Iron Age Archaeology. In: *Guide to archaeological sites in the Free State and Lesotho*. Southern African Association of Archaeologists (SA3), 14th Biennial Conference, Bloemfontein, Post-conference tour 5-8 July 1996. Bloemfontein: National Museum.

DREYER, J. 2000. *Mountains and Rivers of the Free State - Manual for field research / Berge en Riviere van die Vrystaat – Handleiding vir veldnavorsing*. Bloemfontein: University of the Free State, Department of Anthropology, Occasional Paper No. 2.

HUMPHREYS, A.J.B. 1986. *Searching for the past*. Cape Town: David Philip.

PISTORIUS, J.C.C. 1994. *Eskom Archaeological Site Identification Guide*. Johannesburg: Eskom.

MORRIS, D. 1988. Engraved in place and time: a review of variability in the rock art of the Northern Cape and Karoo. *South African Archaeological Bulletin* 43(148):109-121.

MORRIS, D. 1990a. 'Etchings' and 'Intaglios' in the Upper Karoo: Part 1: The engravings at Springbok Oog. In Beaumont, P.B. & Morris, D. *Guide to archaeological sites in the Northern Cape*. Kimberley: McGregor Museum.

MORRIS, D. 1990b. 'Etchings' and 'Intaglios' in the Upper Karoo: Part 2: Engravings on Jagtpan and adjacent farms. In Beaumont, P.B. & Morris, D. *Guide to archaeological sites in the Northern Cape*. Kimberley: McGregor Museum.

PISTORIUS, J.C.C. 1994. *Eskom Archaeological Site Identification Guide*. Johannesburg: Eskom.

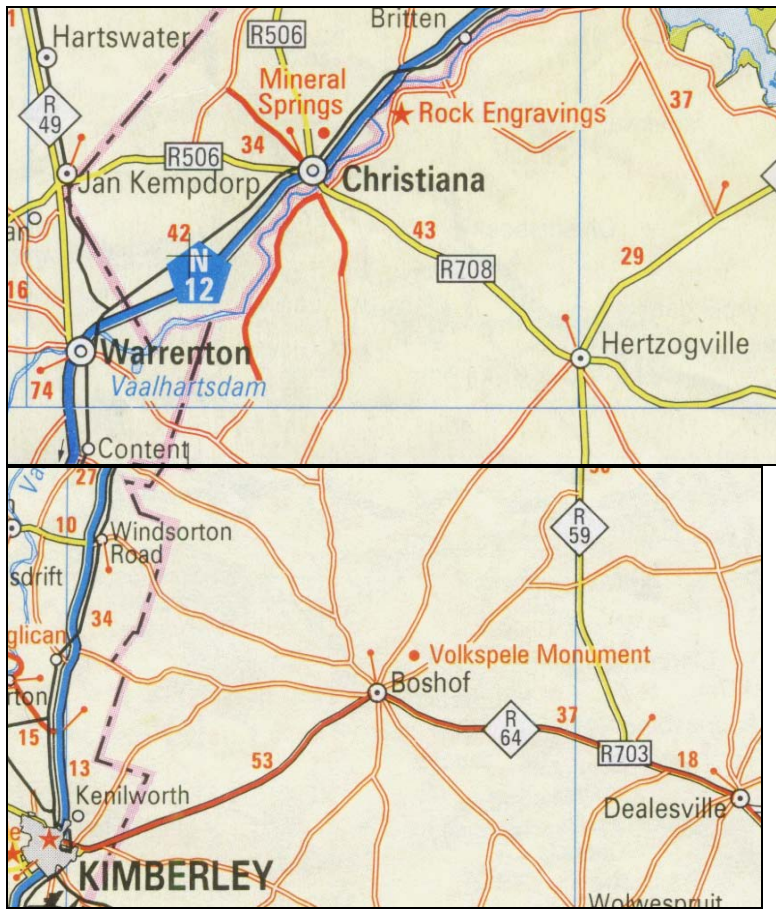
ROSENTHAL, E. (n.d.). *The River of Diamonds*. Cape Town: Howard Timmins.

SMITH, A.B. (Ed.). 1995. *Einiqualand: Studies of the Orange River Frontier*. Cape Town: UCT Press.

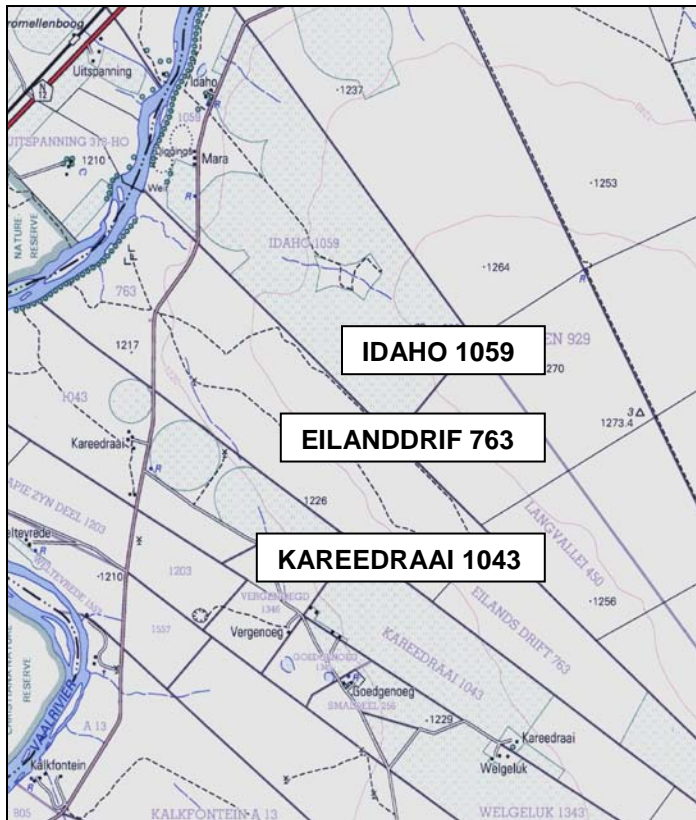
SOHNGE, P.G. VISSER, D.J.L. AND VAN RIET LOWE, C. 1937. *The geology and archaeology of the Vaal River Basin*. Pretoria: Government Printer.

SURVEYOR-GENERAL O.F.S. 1973. *Index of Orange Free State Farms*. Bloemfontein.

VAN HEERDEN, P.S. 1908. *Herinneringin uit den tyd der Vrystaatshe Voortrekkers*. Stellenbosch: Pro Ecclesia Drukkery.

**LIST OF ILLUSTRATIONS:**

Map 1 Locality of Christiana in relation to Kimberley, Boshof and Warrenton.



Map 2 Locality of Kareedraai 1043, Eilanddrif 763 and Idaho 1059 along the Vaal River, Boshof district (2725CD).



Fig.1 Red sand deposit at Eiland Drif 763, along the Vaal River near Boshof.



Fig.2 View of the Vaal River at Eiland Drif 763, Boshof.



Fig.3 Fresh water spring at Eiland Drif 763, Boshof.





Fig.4 Water pump house.



Fig.5 Border fence and vegetation along the River.



Fig.6 Remains of old labourer's houses.



Fig.7 Border of Eiland Drif 763 and Idaho 1059.



Fig.8 The weir in the Vaal River.



Fig.9 Northern point of the proposed development.



Fig.10 Eastern corner of development.



Fig.11 Alluvial soil deposit disturbed by agricultural activities over many years.