

9/2/306/0001



COBUS DREYER
Pr. Archaeologist/Heritage Resource Specialist

P.O. Box 12910
BRANDHOF 9324
Bloemfontein
dreyerj@telkomsa.net

Tel: 051-444 1187
Fax: 051-444 4395
Cell: 083 357 7982

30 JUNE 2006

**FIRST PHASE ARCHAEOLOGICAL AND CULTURAL HERITAGE
ASSESSMENT OF THE PROPOSED TOWNSHIP DEVELOPMENT
AT BRANDFORT, FREE STATE**

EXECUTIVE SUMMARY

New residential developments are planned at Brandfort, Free State.

The developments will be done on a portion of the town lands, which has previously been used as grazing fields and plough lands. No archaeological and cultural remains were found in the proposed area of development.

I recommend that the proposed developments and planning of the site may proceed.

INTRODUCTION AND DESCRIPTION

INVESTIGATION

The site for the proposed new township developments at Brandfort was visited on 23 June 2006. Manie van Wyk from Spatial Solutions Environmental Consultants, Bloemfontein, took me to the site.

The area was examined for possible archaeological and historical material and to establish the potential impact on any cultural material that might be found. The Heritage Impact Assessment (HIA) is done in terms of the National Heritage Resources Act (NHRA), (25 of 1999) and under the Environmental Conservation Act, (73 of 1989).

LOCALITY

The proposed township developments are planned on the Brandfort Town Lands 720, to the west of Brandfort along the R703 road to Theunissen (Map 1).

The proposed area of developments is located to the west of the town and adjacent to the existing township (Map 2&3).

Part of the area consists of a Themeda grass cover (Fig.7).

The following GPS coordinates (Cape scale) were taken (2826CB) (Surveyor-General 1973):

Quarry north	28°41'24"S. 026°27'08"E Altitude 1394m (Fig.1).
Quarry south	28°41'29"S. 026°27'05"E Altitude 1406m (Fig.2).
R	28°41'29"S. 026°27'10"E Altitude 1401m (Fig.3).
S	28°41'35"S. 026°27'07"E Altitude 1397m (Fig.4).
T	28°41'33"S. 026°27'03"E Altitude 1406m (Fig.5).
U	28°41'48"S. 026°26'53"E Altitude 1387m (Fig.6).
A	28°41'49"S. 026°26'46"E Altitude 1386m (Fig.7).
B	28°41'39"S. 026°26'51"E Altitude 1386m (Fig.8).
E	28°41'33"S. 026°26'55"E Altitude 1390m (Fig.9).

RESULTS

The land proposed for residential developments lie adjacent to the existing township of Brandfort (Maps 2&3).

No indication of any archaeological or historical material was found in the proposed area.

IMPACT ASSESSMENT

The proposed residential developments at Brandfort will have no impact on any archaeological or cultural heritage remains at the site.

RECOMMENDATIONS

There are no obvious reasons to delay the commencement of further planning and development of the site and I recommend that the proposed residential developments at Theunissen should proceed.

MITIGATION

Concerning the area for the proposed developments, no mitigation measures will be required.

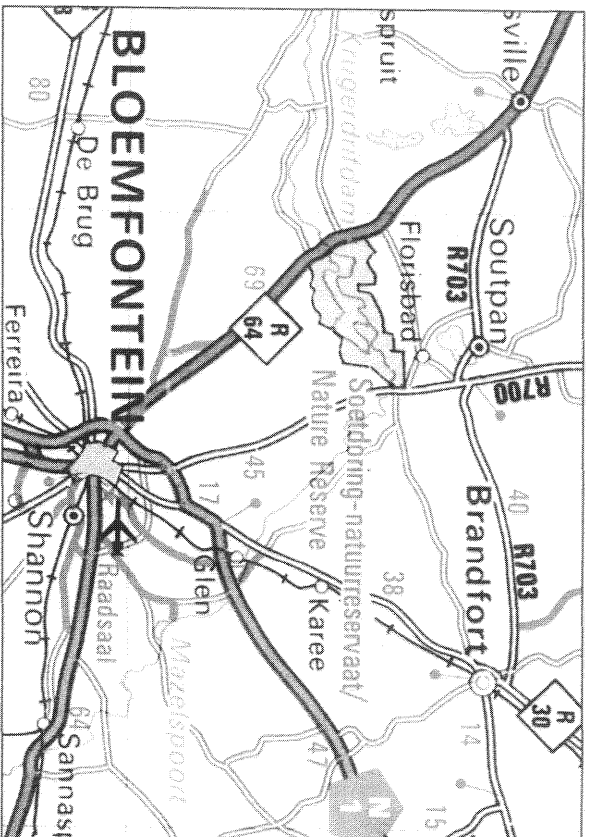
ACKNOWLEDGEMENTS

I thank Mr Manie van Wyk from Spatial Solutions Environmental Consultants, Bloemfontein, for taking me to the site.

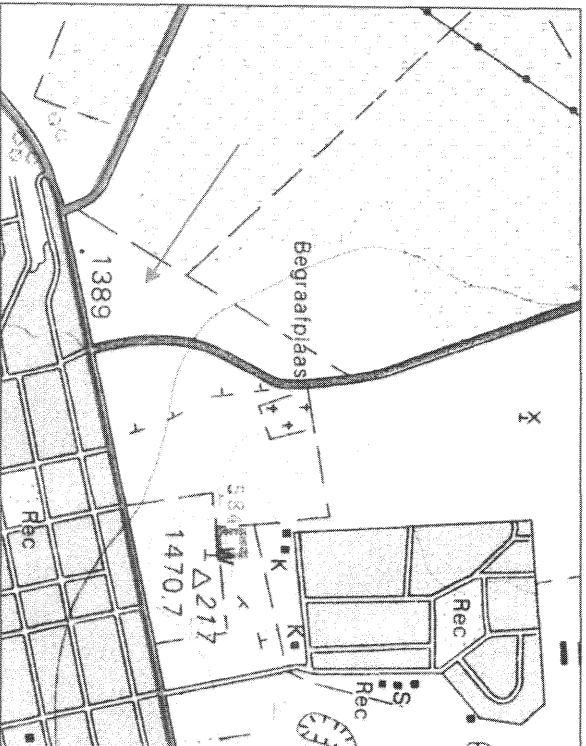
SELECT BIBLIOGRAPHY:

- DEACON, J. 1992. Archaeology for Planners, Developers and Local Authorities. Cape Town: National Monuments Council.
- DREYER, J. 1996. Introduction to Free State Iron Age Archaeology. In: Guide to archaeological sites in the Free State and Lesotho. Southern African Association of Archaeologists (SA3), 14th Biennial Conference, Bloemfontein, Post-conference tour 5-8 July 1996. Bloemfontein: National Museum.
- DREYER, J. 2000. Mountains and Rivers of the Free State - Manual for field research / Berge en Riviere van die Vrystaat – Handleiding vir veldnavorsing. Bloemfontein: University of the Free State, Department of Anthropology, Occasional Paper No. 2.
- HUMPHREYS, A.J.B. 1986. Searching for the past. Cape Town: David Philip.
- MAGGS, T.M. 1976. Iron Age Communities of the Southern Highveld. Pietermaritzburg: Natal Museum.
- PISTORIUS, J.C.C. 1994. Eskom Archaeological Site Identification Guide. Johannesburg: Eskom.
- SURVEYOR-GENERAL O.F.S. 1973. Index of Orange Free State Farms. Bloemfontein.

LIST OF ILLUSTRATIONS



Map 1 Locality of Brandfort in relation to Bloemfontein, Glen and Dealesville.



Map 2 Locality of the proposed development at Brandfort (2826CB).

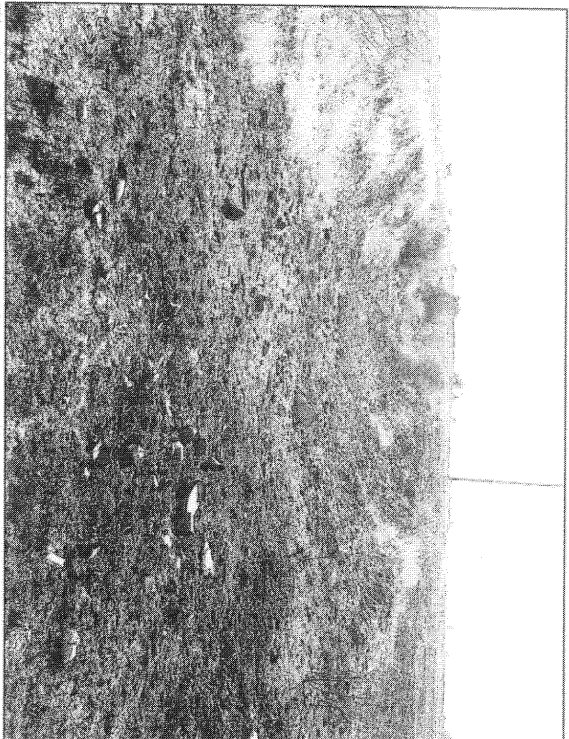


Fig.2 View of the quarry facing north.

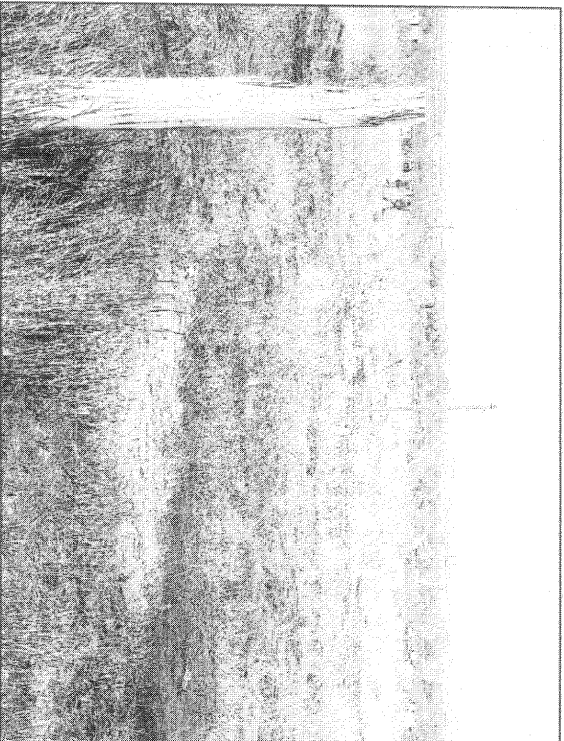


Fig.3 View from point R.

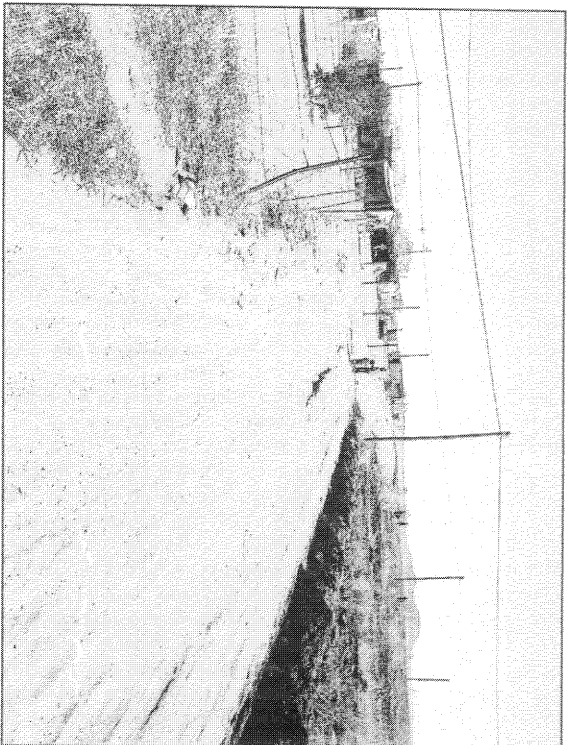


Fig.4 View from point S.

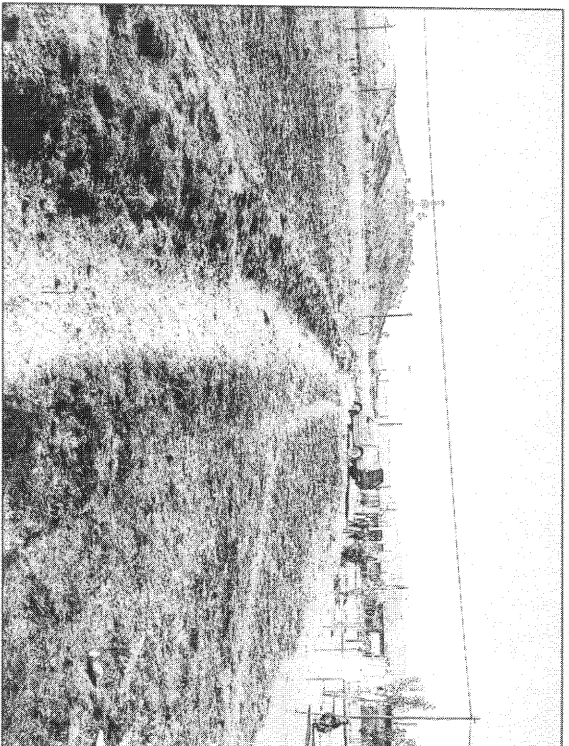


Fig.5 View from point T.

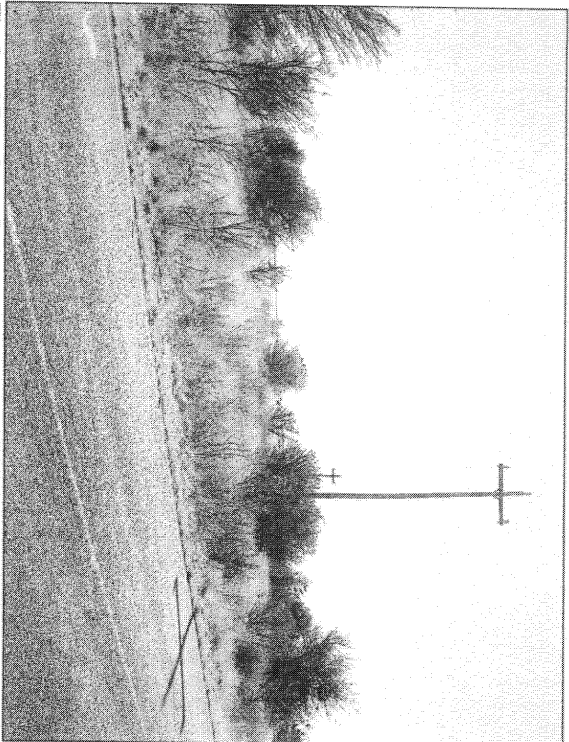


Fig 6 View from Point U along the R703 facing north.

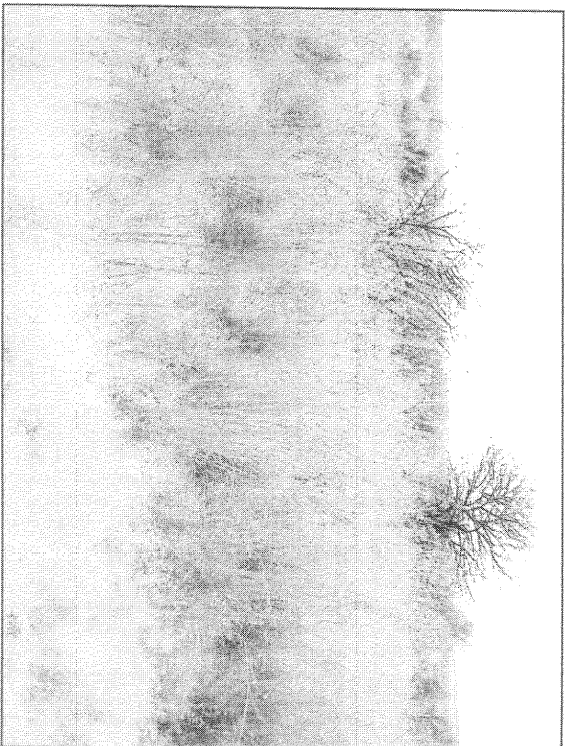


Fig. 7 View from point A along the R703 road to Bultfontein.

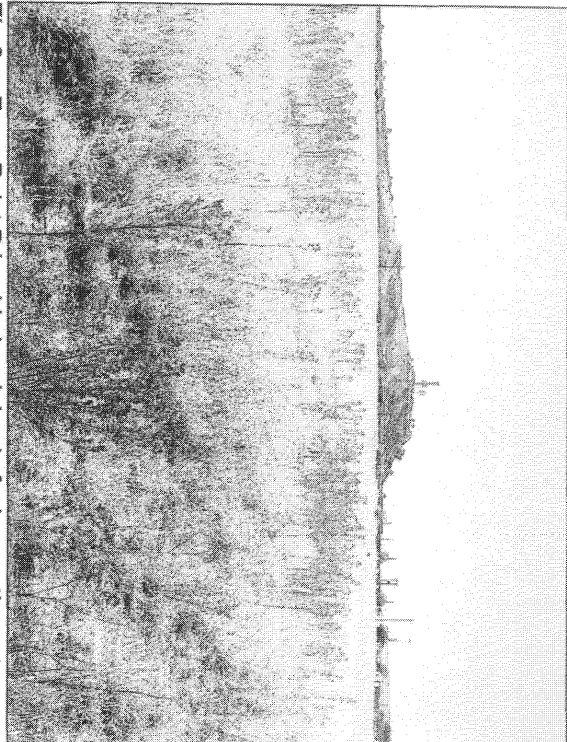


Fig 8 From Point B in old plough lands facing north east.

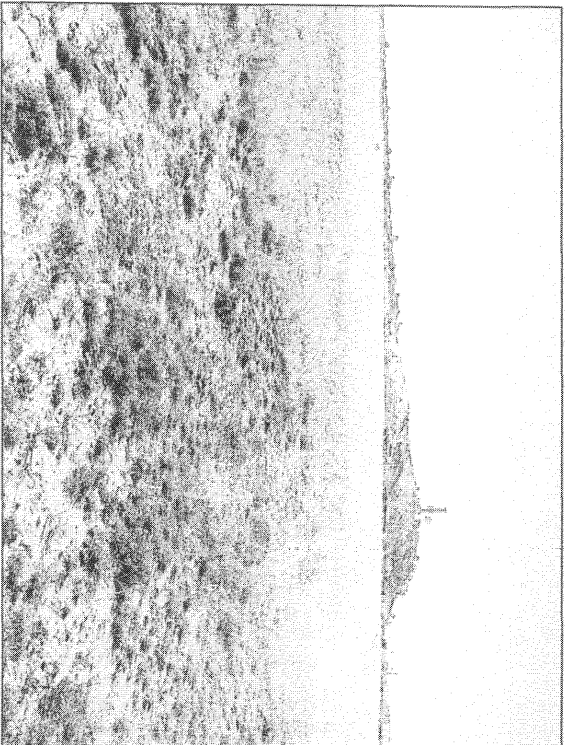


Fig 9 Point E facing east.