



# **COBUS DREYER**

**Pr. Archaeologist/Heritage Resource Specialist**

**P.O. Box 12910  
BRANDHOF 9324  
Bloemfontein  
dreyerj@telkomsa.net**

**Tel: 051-444 1187  
Fax: 051-444 4395  
Cell: 083 357 7982**

5 JULY 2006

## **FIRST PHASE ARCHAEOLOGICAL AND CULTURAL HERITAGE ASSESSMENT OF THE PROPOSED RESIDENTIAL DEVELOPMENT AT DASKOP 615, BRANDFORT, FREE STATE**

### **EXECUTIVE SUMMARY**

New residential developments are planned at Daskop 615, Brandfort, Free State.

No archaeological and cultural or historical remains were found in the proposed area of development.

I recommend that the proposed developments and planning of the site may proceed.

### **INTRODUCTION AND DESCRIPTION**

#### **INVESTIGATION**

The site for the proposed residential developments at the farm Daskop 615, Brandfort, was visited on 4 July 2006. Mr Hennie Karsten, the owner of the farm commissioned the cultural and historical investigation and took me to the site.

The area was examined for possible archaeological and historical material and to establish the potential impact on any cultural material that might be found. The Heritage Impact Assessment (HIA) is done in terms of the National Heritage Resources Act (NHRA), (25 of 1999) and under the Environmental Conservation Act, (73 of 1989).

## LOCALITY

The farm Daskop 615 is located to the west of the railway station of Karee in the district of Brandfort (Surveyor-General 1973). The farm is reached from the R30 road from Glen to Brandfort (Map 1).

The proposed area of developments is located on the northern and western slopes of Daskop Mountain (Map 2) and is planned to include 15 living units.

The area against the hill consists of a dense cover of indigenous trees and shrubs and there is a grass cover lower down and further away from the hill (Figs.1-3,7).

The following GPS coordinates (Cape scale) were taken (2826CD):

Daskop south	28°51'24"S. 026°20'36"E Altitude 1404m (Fig.3).
Top Daskop	28°51'11"S. 026°20'41"E Altitude 1430m.
Corner fence	28°50'57"S. 026°20'39"E Altitude 1397m.
Eastern border fence	28°50'49"S. 026°20'52"E Altitude 1388m (Figs.4-6).
Tafelkop	28°50'49"S. 026°20'03"E Altitude 1428m (Fig.7).
Graves	28°51'21"S. 026°20'04"E Altitude 1383m (Figs.8-9).

## RESULTS

The land proposed for residential developments consists of indigenous tree and shrubs and grass cover and no indication of any archaeological or historical material was found.

A cluster of five stone covered graves (Figs.8-9) is found about 1km away from the proposed area of development (Map 2). According to a farm labourer these graves are the last resting place of old farm labourers who were buried there many years ago. The graves will not be affected by the proposed residential developments.

## IMPACT ASSESSMENT

The proposed residential developments at Daskop 615, Brandfort, will have no impact on any archaeological or cultural heritage remains at the site.

## **RECOMMENDATIONS**

There are no obvious reasons to delay the commencement of further planning and development of the site and I recommend that the proposed residential developments at Daskop 615, Brandfort, should proceed.

## **MITIGATION**

Concerning the area for the proposed developments, no mitigation measures will be required.

## **ACKNOWLEDGEMENTS**

I thank Mr Hennie Karsten of Daskop for involving me in the project.

## **SELECT BIBLIOGRAPHY:**

DEACON, J. 1992. Archaeology for Planners, Developers and Local Authorities. Cape Town: National Monuments Council.

DREYER, J. 1996. Introduction to Free State Iron Age Archaeology. In: Guide to archaeological sites in the Free State and Lesotho. Southern African Association of Archaeologists (SA3), 14th Biennial Conference, Bloemfontein, Post-conference tour 5-8 July 1996. Bloemfontein: National Museum.

DREYER, J. 2000. Mountains and Rivers of the Free State - Manual for field research / Berge en Riviere van die Vrystaat – Handleiding vir veldnavorsing. Bloemfontein: University of the Free State, Department of Anthropology, Occasional Paper No. 2.

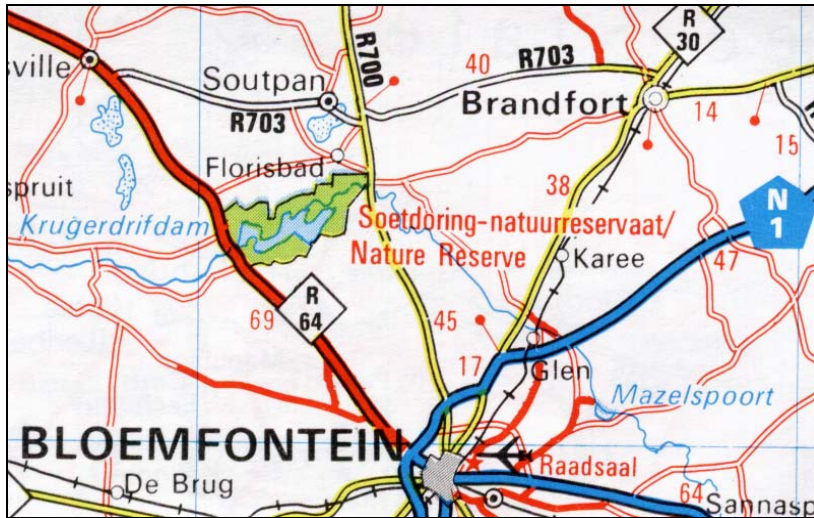
HUMPHREYS, A.J.B. 1986. Searching for the past. Cape Town: David Philip.

MAGGS, T.M. 1976. Iron Age Communities of the Southern Highveld. Pietermaritzburg: Natal Museum.

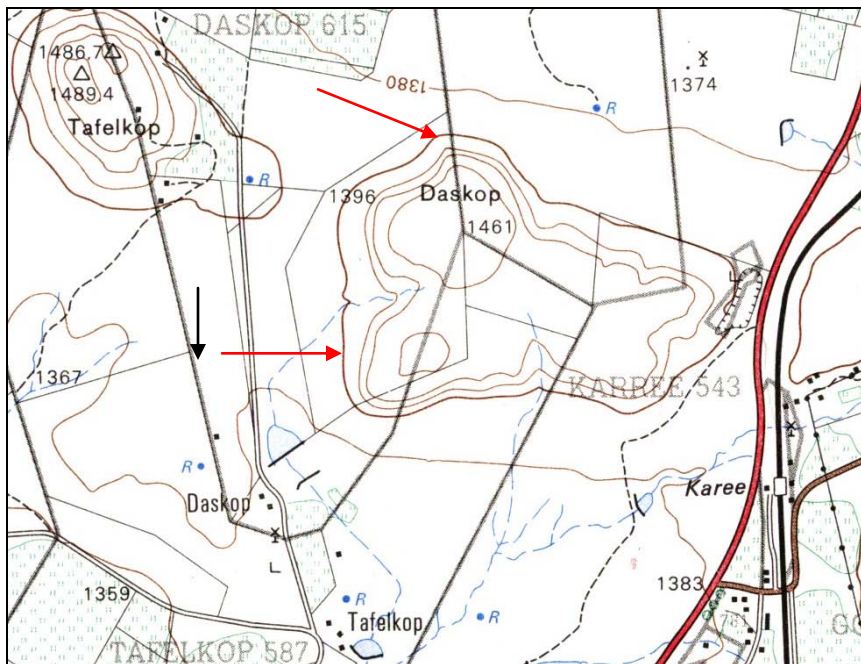
PISTORIUS, J.C.C. 1994. Eskom Archaeological Site Identification Guide. Johannesburg: Eskom.

SURVEYOR-GENERAL O.F.S. 1973. Index of Orange Free State Farms. Bloemfontein.

## LIST OF ILLUSTRATIONS



Map 1 Locality of Glen and Karee in relation to Brandfort and Bloemfontein.



Map 2 Locality of the proposed development at Daskop 615, Brandfort, indicated along the foot of the hill between the red arrows.  
Position of graves is indicated by black arrow (2826CD).



Fig.1 View of the northern part of the area of development against Daskop.



Fig.2 View of the southern part of the area of development against Daskop.



Fig.3 View from the southern point of development at Daskop facing north.



Fig.4 Eastern border fence of the farm against Daskop.



Fig.5 General view of the area of development against the eastern border facing west towards Tafelkop.



Fig.6 View along the eastern border fence north east towards Brandfort.



Fig.7 View across the valley from the development area facing north towards Tafelkop.



Fig.8 A cluster of 5 stone covered graves in the low-lying area.



Fig.9 One of the cluster of graves on the farm Daskop 615, Brandfort.