



COBUS DREYER

Pr. Archaeologist/Heritage Specialist

**P.O. Box 12910
Brandhof
9324
dreyerj@telkomsa.net**

**Tel: 051-444 1187
Fax: 051-444 4395
Cell: 083 357 7982**

31 August 2006

FIRST PHASE ARCHAEOLOGICAL AND CULTURAL HERITAGE INVESTIGATION OF THE JAGERSFONTEIN – FAURESMITH BULK WATER SUPPLY SCHEME, FREE STATE

EXECUTIVE SUMMARY

The proposed water pipeline will carry water from the Kalkfontein Dam to Fauresmith and Jagersfontein, Free State.

The route will follow a distance of approximately 45km. and will run along farm land covered in natural vegetation which changes frequently.

Cultural material occurs in the form of heavy patinated stone tools from the later part of the Acheulian or First Intermediate Period. A single condensed milk can from the Anglo-Boer War (1899-1902) is the only evidence from this misfortune from our more recent past.

The stone tools were found in an area where the power transfer line will cross the main road between Fauresmith and Jagersfontein. This scatter appears to be a general occurrence at this specific spot and do not seem to be of very high significance.

I recommend that further planning and development of the site could continue.

INTRODUCTION AND DESCRIPTION

INVESTIGATION

The route for the proposed water pipe line from the Kalkfontein Dam to Fauresmith and Jagersfontein, Free State, was visited on 6 June 2006 in the company of Dr Johan du Preez of MDA Environmental Consultants, Bloemfontein.

The area was examined for possible archaeological and historical material and to establish the potential impact on any cultural material that might be found. The Heritage Impact Assessment (HIA) is done in terms of the National Heritage Resources Act (NHRA), (25 of 1999) and under the Environmental Conservation Act, (73 of 1989).

LOCALITY

The route for the proposed pipeline is intended to supply water from the Kalkfontein Dam between Fauresmith and Koffiefontein, to Fauresmith and Jagersfontein, Free State.

The route will cover a distance of approximately 45km. along farm land covered in a frequently changing natural vegetation. The line will cross the farms Sendelingsfontein (Map 2), Rooidam 691, Kareepoortjie (Map 3), Omruil 874 (Map 4), Groenvallei 440, Francois 898, Fanida 896 (Map 5), Schietmakaar 27 and Lemoenkloof 608 (Map 6), Bergplaas 1159 (Map 7), Fauresmith Dorps Gronden (Map 8), Welgelegen 489 and Mara (Map 9) to Jagersfontein (Map 10) (Surveyor-General 1973).

The following GPS coordinates (Cape scale) were taken (2925CA, 2925CB, 2925CD).

Kalkfontein Dam	29°29'51"S 025°13'14"E Altitude 1240m (Fig.1).
Route start	29°29'49"S 025°13'12"E Altitude 1233m (Fig.2).
Hill	29°31'22"S 025°12'02"E Altitude 1267m (Fig.3).
Groenspruit	29°37'58"S 025°15'52"E Altitude 1251m (Fig.4&5).
Petrusburg/Koffiefontein T	29°37'30"S 025°17'09"E Altitude 1294m.
Lemoenkloof Pump Station	29°40'04"S 025°17'23"E Altitude 1299m.
Rd/Lemoenkloof	29°40'37"S 025°17'33"E Altitude 1319m (Fig.6).
Fauresmith Dorpsgden	29°43'26"S 025°18'38"E Altitude 1339m.
Fauresmith	29°45'02"S 025°19'40"E Altitude 1368m (Fig.8).
Reservoir	29°45'07"S 025°19'15"E Altitude 1417m (Fig.9).

Welgelegen	29°45'15"S 025°20'49"E Altitude 1378m (Fig.11).
Welgelegen Power line	29°45'08"S 025°22'14"E Altitude 1420m (Fig.12).
Mara	29°45'22"S 025°22'49"E Altitude 1426m (Fig.13).
Mine area	29°45'16"S 025°23'53"E Altitude 1434m (Fig.14).
Fresh Water Spring	29°45'49"S 025°24'41"E Altitude 14140m (Fig.16).
Reservoir Jagersfontein	29°45'01"S 025°25'29"E Altitude 1430m (Fig.17).

RESULTS

FINDS

Stone tools were found at Mara (29°45'22"S 025°22'49"E Altitude 1426m) in an area where the power transfer line will cross the main road between Fauresmith and Jagersfontein (Fig.21). The artefacts occur in the form of heavily patinated stone tools from the later part of the Acheulian or First Intermediate Period scattered on the surface (Fig.22).

A single condensed milk can from the Anglo-Boer War (1899-1902) is the only evidence from this tragedy from our past (Fig.22).

A Great Trek 150 commemorative memorial was erected on 1/12/1988 (Fig.18) along the road from Fauresmith to Jagersfontein.

ASSESSMENT OF IMPACT

The stone tool occurrence seems to be concentrated to the one area. The heavy patinated appearance of the stone tools and do not seem to be of very high significance

A single condensed milk can from the Anglo-Boer War (1899-1902) is the only evidence from this misfortune from our past.

RECOMMENDATIONS

I recommend that the planning of the proposed water pipeline developments may proceed.

MITIGATION

Concerning the area for the proposed developments, the only mitigation measures will be required in the case of the scatter of Acheulian stone tools. I recommend that the pipeline should be moved more to the south to avoid the specific spot near the main road.

No further reasons could be found to delay the commencement of further planning and development of the site.

I recommended that the proposed developments may proceed.

ACKNOWLEDGEMENTS

I thank Dr Johan du Preez of MDA Environmental Consultants, Bloemfontein, for taking me to the site and Mr Jaques Helm for showing us around.

SELECT BIBLIOGRAPHY:

DEACON, J. 1992. Archaeology for Planners, Developers and Local Authorities. Cape Town: National Monuments Council.

DREYER, J. 1996. Introduction to Free State Iron Age Archaeology. In: Guide to archaeological sites in the Free State and Lesotho. Southern African Association of Archaeologists (SA3), 14th Biennial Conference, Bloemfontein, Post-conference tour 5-8 July 1996. Bloemfontein: National Museum.

DREYER, J. 2000. Mountains and Rivers of the Free State - Manual for field research / Berge en Riviere van die Vrystaat – Handleiding vir veldnavorsing. Bloemfontein: University of the Free State, Department of Anthropology, Occasional Paper No. 2.

HUMPHREYS, A.J.B. 1986. Searching for the past. Cape Town: David Philip.

MAGGS, T.M. 1976. Iron Age Communities of the Southern Highveld. Pietermaritzburg: Natal Museum.

PISTORIUS, J.C.C. 1994. Eskom Archaeological Site Identification Guide. Johannesburg: Eskom.

SURVEYOR-GENERAL O.F.S. 1973. Index of Orange Free State Farms. Bloemfontein.

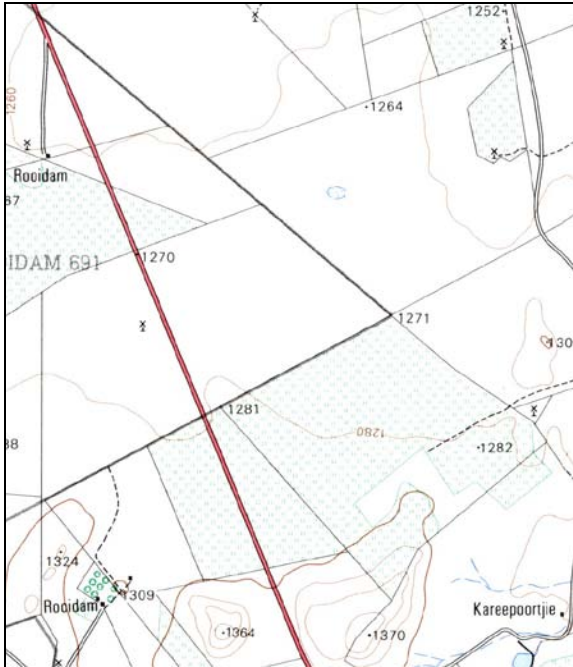
LIST OF ILLUSTRATIONS:



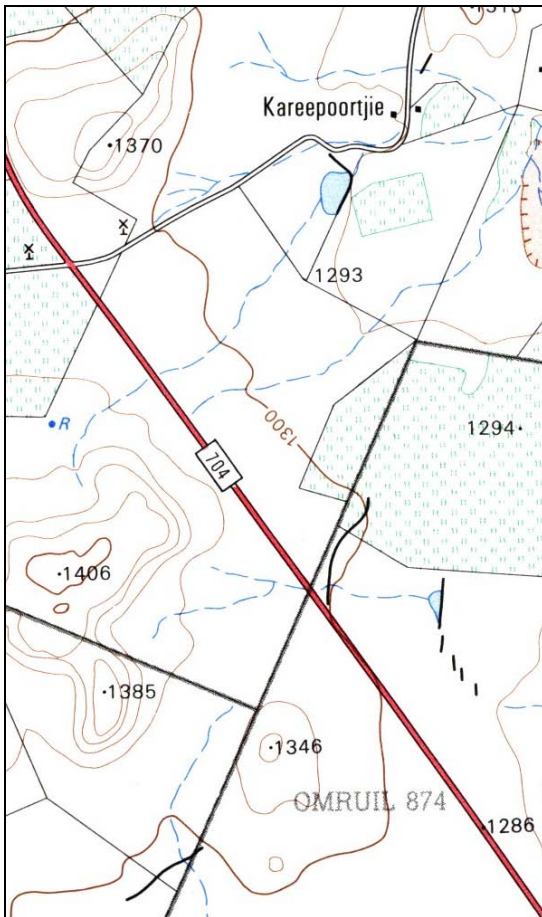
Map 1 Locality of the Kalkfontein Dam in relation to Fauresmith and Jagersfontein.



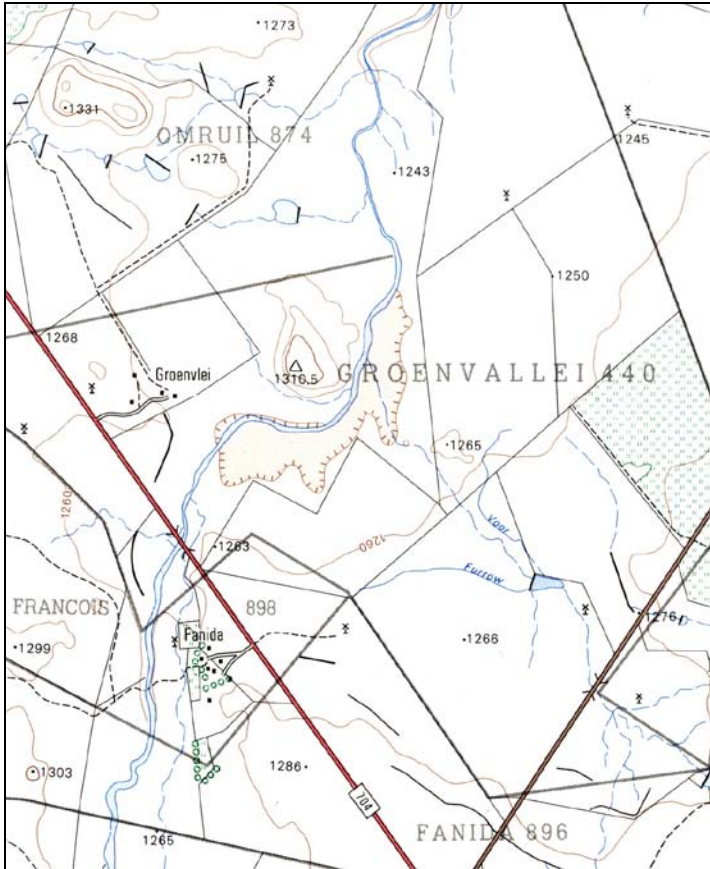
Map 2 Route of the pipeline from the Kalkfontein Dam wall via Sendelingsfontein (2925CA).



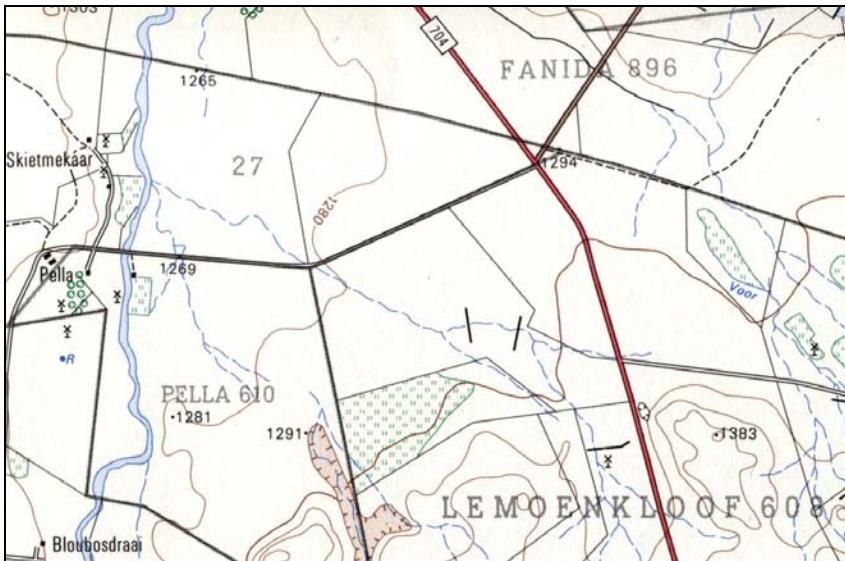
Map 3 Pipeline route will run from Sendelingsfontein to Roidam and Kareepoortjie (2925CA).



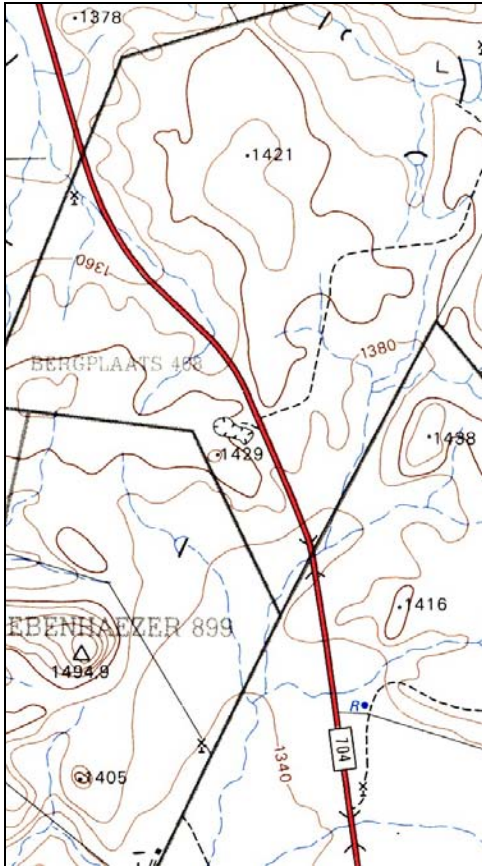
Map 4 From Kareepoortjie the line will cross over Omruil to Groenvallei (2925CB).



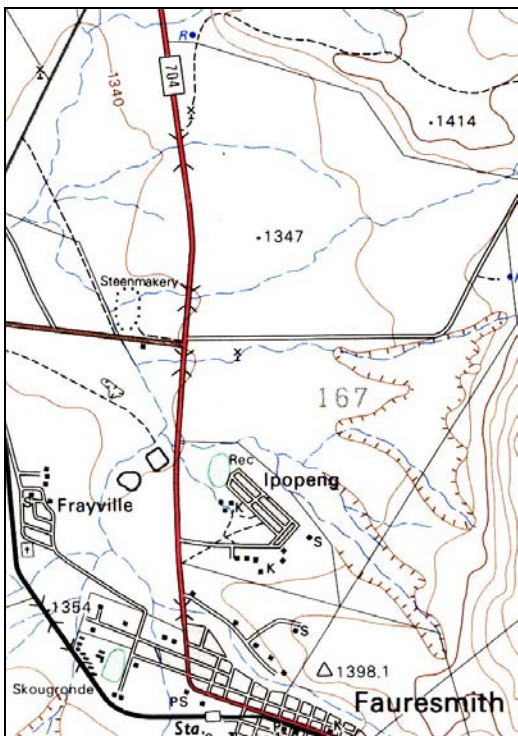
Map 5 Pipeline route will go from Omrui across Groenvallei, Francois to Fanida (2925CB).



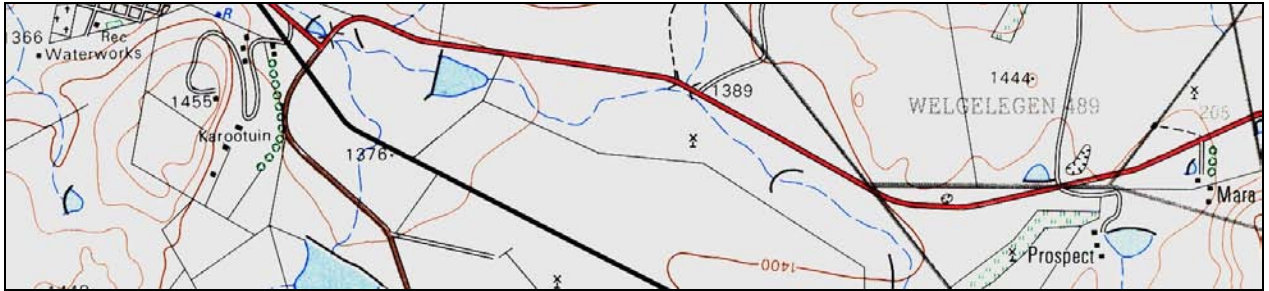
Map 6 Pipeline from Fanida and Skietmekaar to Lemoenkloof (2925CB).



Map 7 The pipe will run from Lemoenkloof to Bergplaas (2925CB).



Map 8 The pipeline will go from Bergplaas to the Fauresmith Reservoir (2925CB).



Map 9 Pipeline goes from Fauresmith via Welgelegen to Mara (2925CD).



Map 10 From Mara the water pipeline will pas over Vogelfontein, across the mine area to the reservoir at Jagersfontein (2925CD).



Fig.1 Kalkfontein Dam where the pipeline will start.



Fig.2 First part of the route from the Kalkfontein Dam.



Fig.3 View of the route towards Fauresmith.



Fig.4 The pipeline will have to cross the Groenspruit.



Fig.5 View from Groenspruit towards Fauresmith.



Fig.6 The road crossing at Lemoenkloof.



Fig.7 Bergplaas on the way to Fauresmith.



Fig.8 View along the pipeline route just before Fauresmith.

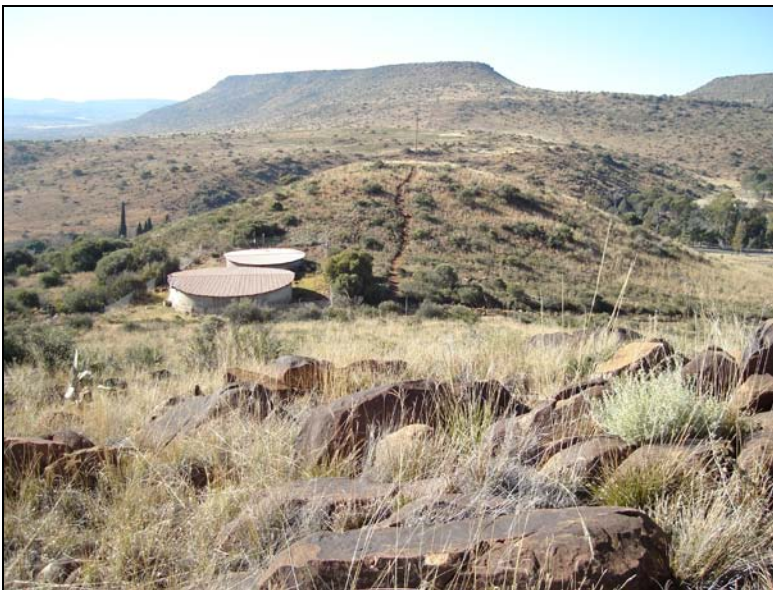


Fig.9 Water reservoir at Fauresmith.



Fig.10 View from the reservoir at Fauresmith towards Jagersfontein.



Fig.11 Pipeline route outside Fauresmith facing towards Jagersfontein.



Fig.12 Pipeline route towards Jagersfontein.



Fig.13 Road crossing at Mara.



Fig.14 Entrance to the mine area at Jagersfontein.



Fig.15 View of the mining area from the west.



Fig.16 A fresh water spring inside the mining area at Jagersfontein.



Fig.17 Water reservoir at Jagersfontein.



Fig.18 Great Trek 150 Memorial erected on 1/12/1988 near the main road between Fauresmith and Jagersfontein.



Fig.19 Old buildings at Jagersfontein mine area.



Fig.20 Another old and ruined building in the mining area.



Fig.21 Area on Mara where stone tools were found.



Fig.22 Heavy patinated stone tools from the later part of the Acheulian on First Intermediate and a condensed milk can from the Anglo-Boer War (1899-1902).