



COBUS DREYER

Pr. Archaeologist/Heritage Specialist

**P.O. Box 12910
BRANDHOF 9324
Bloemfontein
dreyerj@telkomsa.net**

**Tel: 051-444 1187
Fax: 051-444 4395
Cell: 083 357 7982**

19 September 2005

FIRST PHASE ARCHAEOLOGICAL AND CULTURAL HERITAGE ASSESSMENT OF THE PROPOSED RESIDENTIAL DEVELOPMENTS AT THE FARM HERMANUS 715, ROSENDAL, FREE STATE

INVESTIGATION

The site for the proposed housing developments on the farm Hermanus 715 near Rosendal was visited and inspected on 8 September 2005. Dr Johan du Preez of MDA Environmental Consultants, Bloemfontein, and Jako Viviers of LMV Environmental Specialists, Kroonstad accompanied me to the site. At the farm, we were taken around by the owner, Mr Francois Crause.

The area was examined for possible archaeological and historical material and to establish the potential impact on any cultural material that might be found. The Heritage Impact Assessment (HIA) is done in terms of the National Heritage Resources Act (NHRA), (25 of 1999) and under the Environmental Conservation Act, (73 of 1989).

LOCALITY

The proposed residential area will cover about 100 hectares and is located on the farm Hermanus 715 near Rosendal in the Ficksburg District, Free State Province (Surveyor-General 1973).

The residential developments are planned in a very picturesque kloof on the farm (Map 2). The area of development consists of cultivated land.

The following GPS co-ordinates were taken (2827DB):

Entrance 28°35'03"S. 027°58'11"E. Altitude 1303m (Fig.1).

Lucerne lands	28°34'55"S. 027°58'22"E. Altitude 1733m (Figs.2-4).
Big rock	28°34'57"S. 027°58'16"E. Altitude 1734m (Fig.5).
Recreational camp	28°34'43"S. 027°58'33"E. Altitude 1743m (Fig.9).
Old ABW house	28°35'14"S. 027°58'06"E. Altitude 1722m (Fig.10).

FINDS

The area proposed for residential developments is part of agricultural grazing fields (Fig.). The site does not contain any archaeological, cultural or historical remains.

No indication of archaeological or historical material was found on the surface neither were any stone tools or ceramic ware found.

RECOMMENDATIONS

There is no obvious reason to delay the commencement of further planning and development of the site.

I recommend that the proposed developments may proceed.

MITIGATION

Concerning the area for the proposed development, no mitigation measures are needed.

ACKNOWLEDGEMENTS

I thank Dr Johan du Preez of MDA Environmental Consultants, Bloemfontein, and Jako Viviers of LMV Environmental Specialists, Kroonstad, for taking me to the site.

SELECT BIBLIOGRAPHY:

DEACON, J. 1992. Archaeology for Planners, Developers and Local Authorities. Cape Town: National Monuments Council.

DREYER, J.J.B. 1992. The Iron Age Archaeology of Doornpoort, Winburg, Orange Free State. Navorsing van die Nasionale Museum, Bloemfontein, Vol.8(7):262-390.

DREYER, J. 1996. Introduction to Free State Iron Age Archaeology. In: Guide to archaeological sites in the Free State and Lesotho. Southern African Association of Archaeologists (SA3), 14th Biennial Conference, Bloemfontein, Post-conference tour 5-8 July 1996. Bloemfontein: National Museum.

DREYER, J. 2000. Mountains and Rivers of the Free State - Manual for field research / Berge en Riviere van die Vrystaat – Handleiding vir veldnavorsing. Bloemfontein: University of the Free State, Department of Anthropology, Occasional Paper No. 2.

HUMPHREYS, A.J.B. 1986. Searching for the past. Cape Town: David Philip.

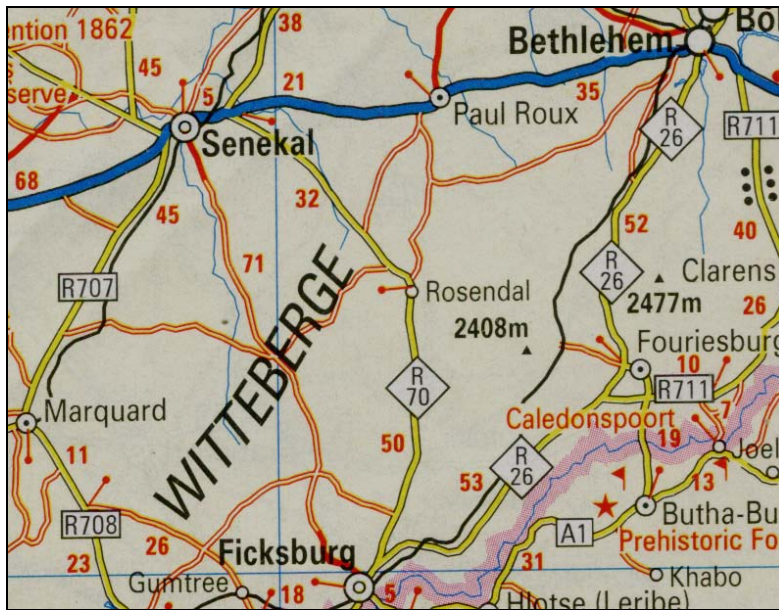
MAGGS, T.M. 1976. Iron Age Communities of the Southern Highveld. Pietermaritzburg: Natal Museum.

MAGGS, T.M. 1976. Iron Age Communities of the Southern Highveld. Pietermaritzburg: Natal Museum.

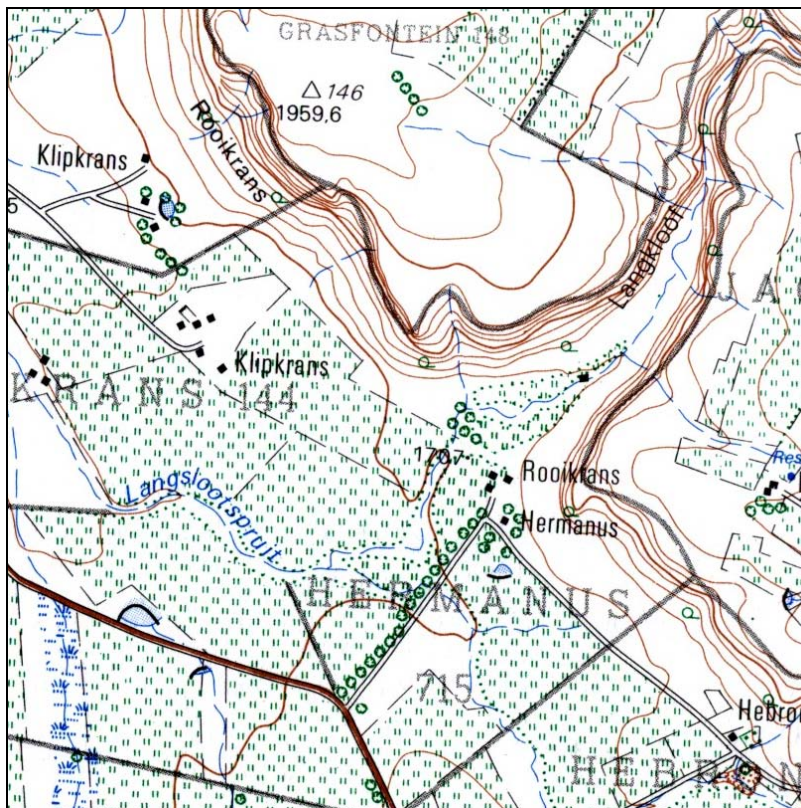
PISTORIUS, J.C.C. 1994. Eskom Archaeological Site Identification Guide. Johannesburg: Eskom.

SURVEYOR-GENERAL O.F.S. 1973. Index of Orange Free State Farms. Bloemfontein.

LIST OF ILLUSTRATIONS



Map 1 Locality of Rosendal in relation to Senekal, Bethlehem, Paul Roux and Ficksburg.



Map 2 Locality of Hermanus 715 indicating the Langkloof (2827DB).



Fig.1 View at the kloof entrance at Hermanus 715, Rosendal.



Fig.2 Cultivated grazing at the entrance to the kloof.



Fig.3 A general view of the area of development in the kloof at Hermanus 715, Rosendal.



Fig.4 The cliff on the eastern side of the kloof.

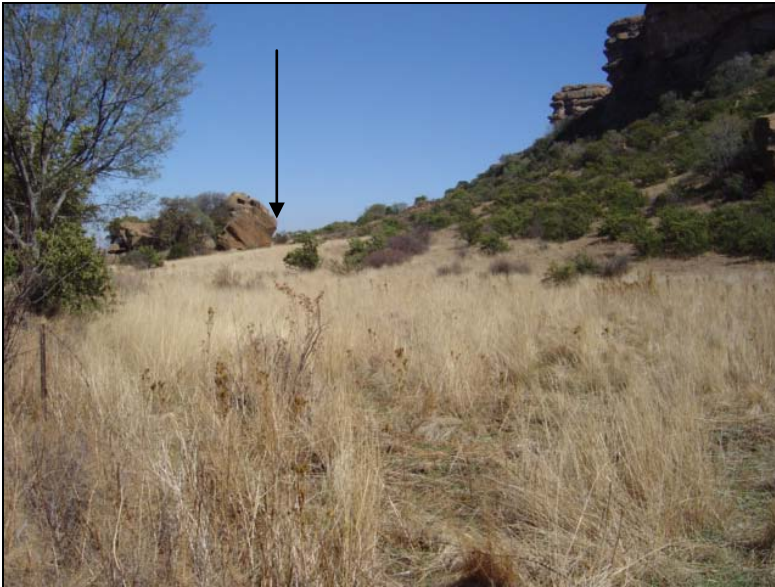


Fig.5 A big boulder against the slope in the kloof. Stone-walling occur behind the rock.



Fig.6 View of the area behind the rock.



Fig.7 Stone-wall next to the big boulder against the cliff.



Fig.8 Hollow below the big boulder.



Fig.9 The school recreational camp in the kloof at Hermanus.



Fig.10 The site of the old Anglo-Boer War farm house at Hermanus.