



COBUS DREYER

Pr. Archaeologist/Heritage Resource Specialist

**P.O. Box 12910
BRANDHOF 9324
Bloemfontein
dreyerj@telkomsa.net**

**Tel: 051-444 1187
Fax: 051-444 4395
Cell: 083 357 7982**

6 JULY 2006

**FIRST PHASE ARCHAEOLOGICAL AND CULTURAL HERITAGE
ASSESSMENT OF THE PROPOSED RESIDENTIAL
DEVELOPMENTS AT FOUTANIE 331, FOURIESBURG,
FREE STATE**

EXECUTIVE SUMMARY

New residential developments are planned on the farm Foutanie 331, Fouriesburg, Free State.

The developments will be erected on a portion of the farm, which has until recently been used as plough lands. No archaeological and cultural remains occurred at the site.

I recommend that the planning of the residential area could proceed, but in the case of the discovery of any cultural or human skeletal material, work should be stopped for inspection by the archaeologist.

INTRODUCTION AND DESCRIPTION

HISTORY OF FOUTANIE

There are many references in the historical literature, which declare the role of Foutanie in early Basotho history (Ellenberger 1912, MacGregor 1905).

The name is spelt in a variety of ways such as Futhane, Fothani or Foutanie and appears on the official maps as Foutanie (Surveyor-General O.F.S. 1973.). The specific locality was also known as Moribeng or Lethole during prehistoric times (Dreyer 1999).

Futhane is known as the place of the Bakoena of Monaheng. Tsotelo of the Bakoena Bamolibeli joined Monaheng (Kali) at this place and it is related that the old chief (Monaheng) died at Moribeng, a cave at Futhane.

After the death of his favourite son Mokheseng (Ratlali) the people of Monaheng were driven from Futhane during the internal strife of his leaderless people, leaving behind the graves of their fore fathers.

It was also at this place where the Bamaiyane, an offshoot of the Bakoena of Monaheng had their origin. Here they were attacked by the Bafokeng of Letuka, who ruined them and thus drove them into cannibalism.

The Bafokeng of Mare is also mentioned as to have had some connection with Futhane. The representatives of Moshoeshoe and Lethole got together at Futhane to discuss their mutual support against certain enemies from east of the mountains.

INVESTIGATION

The site for the proposed new township developments at Foutanie 331, Clarens was visited on 24 February 2006 and 31 March 2006. Dr Johan du Preez of MDA Environmental Consultants, Bloemfontein and Jako Viviers of LMV Environmental Specialists, Kroonstad, took me to the site. At the farm, Ntate Ramolefe David Mofokeng took us to the different sites.

The area was examined for possible archaeological and historical material and to establish the potential impact on any cultural material that might be found. The Heritage Impact Assessment (HIA) is done in terms of the National Heritage Resources Act (NHRA), (25 of 1999) and under the Environmental Conservation Act, (73 of 1989).

LOCALITY

The farm Foutanie 331 is located between Clarens and Fouriesburg along R711 main road to Bethlehem (Map 1).

The different areas proposed for development will cover about 75 hectares, and is indicated on the Maps 3-6.

Certain parts of the land proposed for residential developments form part of ploughing fields, which until recently had been used for crop production (Figs.2&3).

The following GPS coordinates (Cape scale) were taken (2828AD) (Surveyor-General 1973):

SITE A

Graves near farm house	28°40'01"S. 028°15'10"E Altitude 1703m (Fig.9).
Stand 1	28°40'05"S. 028°14'51"E Altitude 1686m.
Stand 3	28°40'01"S. 028°14'44"E Altitude 1678m.
Stand 5	28°40'03"S. 028°14'37"E Altitude 1671m.
Stand 10	28°40'06"S. 028°14'22"E Altitude 1650m.
Stand 14	28°39'57"S. 028°14'31"E Altitude 1663m.
Stand 20	28°40'07"S. 028°14'35"E Altitude 1658m (Fig.4).
Graves	28°40'10"S. 028°14'34"E Altitude 1647m (Fig.5).
Stand 21	28°40'09"S. 028°14'32"E Altitude 1655m.

SITE B

Entrance gate	28°39'44"S. 028°15'08"E Altitude 1665m (Fig.10).
Stand 30	28°39'15"S. 028°15'00"E Altitude 1645m.
North Gate	28°39'21"S. 028°15'05"E Altitude 1650m (Fig.11).

RESULTS

The land proposed for residential developments used to be old plough lands (Figs. 2-4).

No indication of any archaeological or historical material was found at the site.

IMPACT ASSESSMENT

Although the farm and the region had clearly, according to the recorded history, played a prominent role in the early history of the Basotho people, no traces of their occupation could be found in the area proposed for development.

The proposed residential developments at Foutanie 331, Fouriesburg, will have no impact on any archaeological or cultural heritage remains on the proposed site.

A cluster of about five graves was found near sites 20 and 21 (Map 5). People from the township at Fouriesburg is known to have visited the site on a regular basis to pay homage to their ancestors. It will, therefore, be necessary to avoid this immediate area.

RECOMMENDATIONS

There are no obvious reasons to delay the commencement of further planning and development of the site at Foutanie 331, Fouriesburg, and should be allowed to proceed.

It should be kept in mind that there is a strong possibility that archaeological finds in the form of stone-walls or ash heaps with potsherds could be found. In case of the discovery of any material, it should be considered that every archaeological site is unique and should be protected as an exceptional cultural entity. Special care should be taken during the construction process not to damage any archaeological feature. In the case of the discovery of archaeological material during building operations, the process should be stopped to inform the archaeologist.

MITIGATION

Concerning the area for the proposed developments, mitigation measures will be required in the case of the discovery of stone-walls or cultural material such as potsherd or human skeletal material.

ACKNOWLEDGEMENTS

I thank Dr Johan du Preez of MDA Environmental Consultants, Bloemfontein and Jako Viviers of LMV Environmental Specialists, Kroonstad, for taking me to the site.

SELECT BIBLIOGRAPHY:

DEACON, J. 1992. Archaeology for Planners, Developers and Local Authorities. Cape Town: National Monuments Council.

DREYER, J.J.B. 1992. The Iron Age Archaeology of Doornpoort, Winburg, Orange Free State. Navorsing van die Nasionale Museum, Bloemfontein, Vol.8(7):262-390.

DEYER, J. 1999. Historical Gazeteer for the Free State. Unpublished place name data base. Bloemfontein.

DREYER, J. 1996. Introduction to Free State Iron Age Archaeology. In: Guide to archaeological sites in the Free State and Lesotho. Southern African Association of Archaeologists (SA3), 14th Biennial Conference, Bloemfontein, Post-conference tour 5-8 July 1996. Bloemfontein: National Museum.

DREYER, J. 2000. Mountains and Rivers of the Free State - Manual for field research / Berge en Riviere van die Vrystaat – Handleiding vir veldnavorsing. Bloemfontein: University of the Free State, Department of Anthropology, Occasional Paper No. 2.

ELLENBERGER, D.F. 1912. History of the Basuto. London:Caxton Publishing Co.

HUMPHREYS, A.J.B. 1986. Searching for the past. Cape Town: David Philip.

MACGREGEOR, J.C. 1905. Basuto Traditions. Cape Town: UCT Library Reprint Series No. 12, 1957.

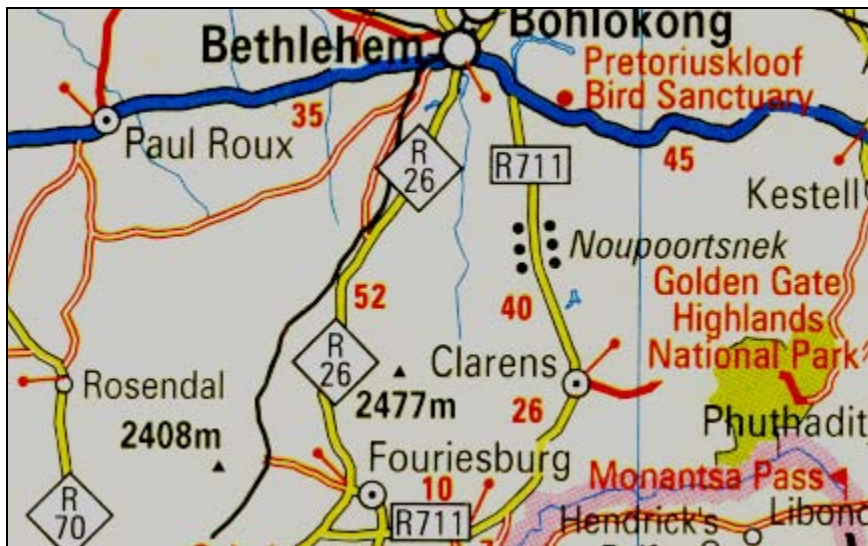
MAGGS, T.M. 1976. Iron Age Communities of the Southern Highveld. Pietermaritzburg: Natal Museum.

PISTORIUS, J.C.C. 1994. Eskom Archaeological Site Identification Guide. Johannesburg: Eskom.

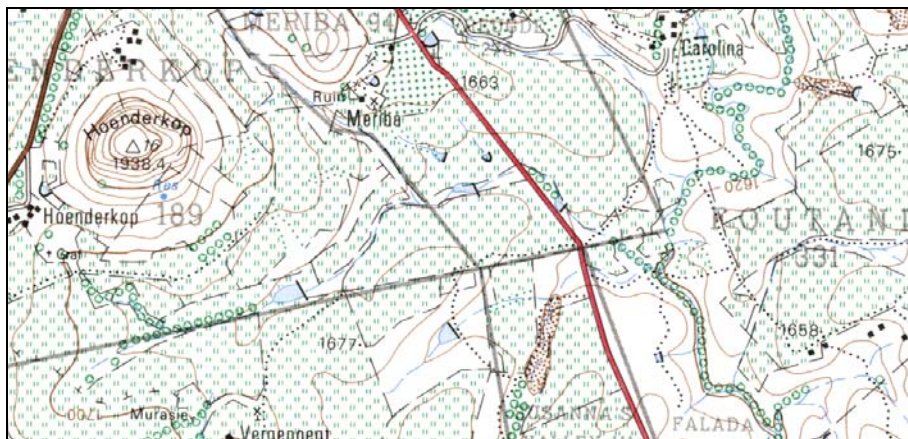
SURVEYOR-GENERAL O.F.S. 1973. Index of Orange Free State Farms. Bloemfontein.

VAN RENSBURG, A.P.J. 1968. Golden Gate – Die geskiedenis van twee plase wat 'n Nasionale Park geword het. Koedoe 11:83-138.

LIST OF ILLUSTRATIONS



Map 1 Locality of Fouriesburg in relation to Clarens, Bethlehem and Golden Gate.



Map 2 Locality of Fouthanie 331, south west of Fouriesburg (2828CB&2828CA).



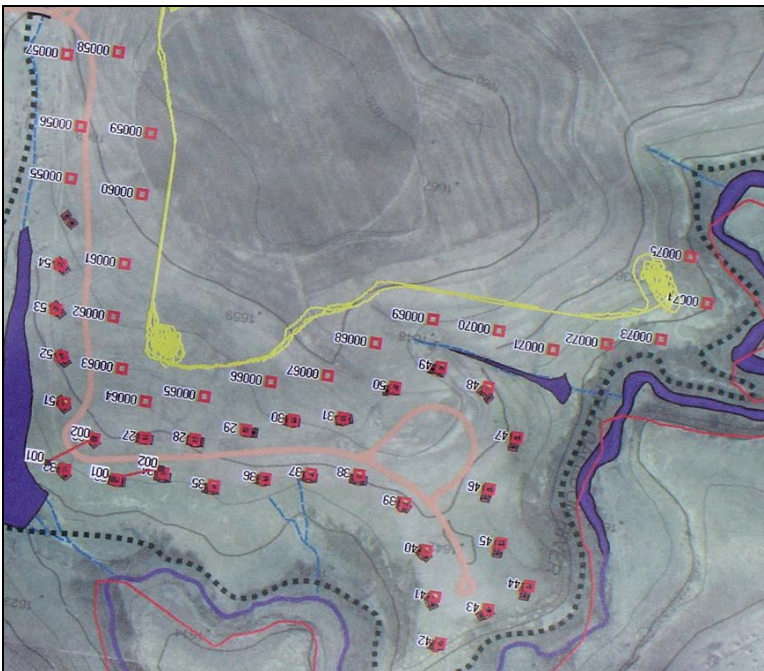
Map 3 Layout plan of the proposed residential developments at Existing buildings indicated by red arrow.



Map 4 New additions to the area near the existing buildings at Foutanie 331, Fouriesburg..



Map 5 Proposed stands 1-25 south of the existing buildings at Foutanie 331, Fouriesburg.



Map 6 Proposed stands 26-75 west of the existing buildings at Foutanie 331, Fouriesburg.



Fig.1 View from Foutanie of Queen Victoria rock at De Villiersdrift 338, Fouriesburg.



Fig.2 General view of the proposed development area to the south (Map 5).



Fig.3 Vegetation on the ploughed land at stand 14.



Fig.4 Stand 20 with natural water spring.



Fig.5 A cluster of about 5 graves of former farm labourers which are regularly visited by their family.



Fig.6 Site where farm labourers used to live.



Fig.7 Existing chalets at Foutanie 331, Fouriesburg.



Fig.8 View from the existing chalets across the area for future development on the right



Fig.9 The graves of Maria Cornelia Magdalena Heyns *22/2/1914 †12/1/1933 and Fredrica Gertruida Elizabeth van Niekerk (Born Bender) *28/6/1888 †25/4/1926.



Fig.10 Entrance to the proposed site west of the existing buildings (Map 6).



Fig.11 General view of the vegetation on site 3.



Fig.12 View of the river below site 3 at Foutanie 331.