

*received 1.12.05
9/2/3/6/2018*



COBUS DREYER
Pr. Archaeologist/Heritage Specialist

P.O. Box 12910
Brandhof
9324
dreyerc.HUM@mail.uovs.ac.za

Tel: 051 - 444 1187
Fax: 051 - 444 4395
Cell: 083 - 357 7982

14 September 2005

**FIRST PHASE ARCHAEOLOGICAL AND CULTURAL HERITAGE
INVESTIGATION OF THE PROPOSED RESIDENTIAL
DEVELOPMENTS ON TOWNLANDS 131, HARRISMITH**

EIA

INVESTIGATION

The site for the proposed housing development at Harrismith was visited on 26 August 2005. Piet Rheeder of Nuhela Trust, Harrismith, directed me to the site.

The site was examined for any possible traces of cultural and historical remains to establish the potential impact of the developments on any archaeological and cultural historical material. The significance of certain structures was examined and the possibility of archaeological remains was also investigated. The Heritage Impact Assessment (HIA) is done in terms of the National Heritage Resources Act (NHRA), (25 of 1999) and under the Environmental Conservation Act, (73 of 1989).

LOCALITY

The land for the proposed residential development is located on the town lands to the east of Harrismith (Map 1) and is situated between Berg Road and the entrance to the Botanical Gardens (Map 2) (2829AC 1983). The area covers about 17 000m².

The proposed land consists of sandy soil with grass cover with scattered shrubs and trees. It seems as if soil contour walls were visible on the surface on the upper part of the site.

There is a substantial flood plain along the riverfront.

The following GPS co-ordinates (Cape) were taken:

Intersection Berg & Botanical Gardens Road 28°16'39"S 029°08'55"E Altitude 1688m (Fig2&3).

Road to Botanical Gardens 28°16'39"S 029°08'56"E Altitude 1679m (Figs.1,2,6&7).

North-east corner 28°16'30"S 029°08'57"E Altitude 1670m.

Old foundations 28°16'36"S 029°08'48"E Altitude 1671m (Figs.4,16&17)

House ruins 28°16'37"S 029°08'53"E Altitude 1676m (Fig.10-13).

Concrete base 28°16'36"S 029°08'55"E Altitude 1678m (Figs.4,14&16).

Water pipe 28°16'36"S 029°08'55"E Altitude 1676m (Fig.15).

Stone wall 28°16'35"S 029°08'55"E Altitude 1675m (Fig.15).

Concrete blocks 28°16'34"S 029°08'56"E Altitude 1674m (Fig.17).

Yellow house 28°16'36"S 029°08'59"E Altitude 1671m (Fig.19).

House ruin 28°16'33"S 029°08'58"E Altitude 1672m (Fig.20).

River front 28°16'24"S 029°09'00"E Altitude 1666m (Figs.21&22).

FINDS

During the investigation a variety of the remains of previous structures such as a living house and electrical installations were discovered on the surface. No remains of archaeological and other material of cultural historical importance could be found on the site.

DISCUSSION

The disturbances by previous industrial, residential activities and possible agricultural developments made it unlikely that any remains of early human occupation could have survived.

RECOMMENDATIONS

No obvious reasons could be found to delay the commencement of further planning and development of the site. It is recommended that the proposed developments may proceed.

MITIGATION

Concerning the area for the proposed development, no mitigation measures are needed.

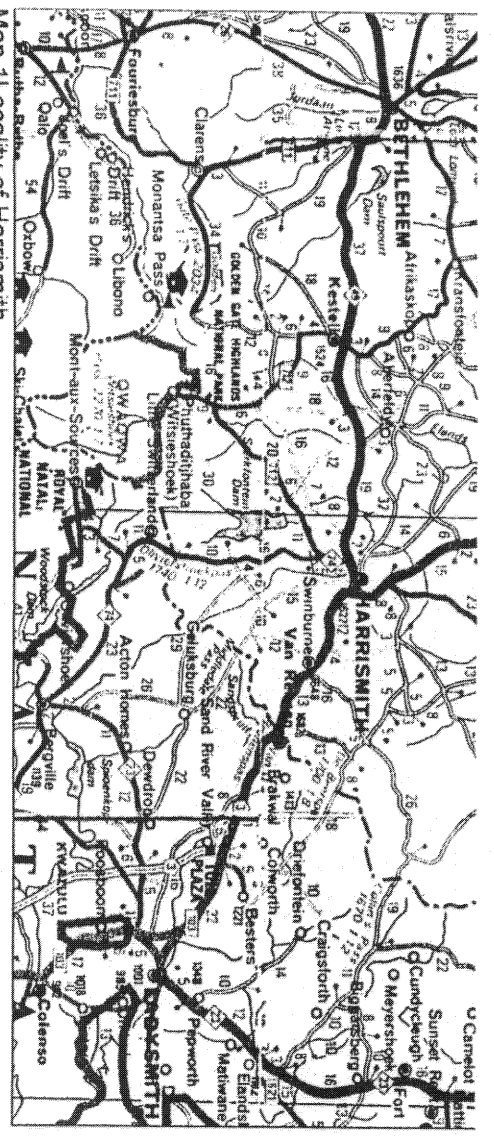
ACKNOWLEDGEMENTS

Piet Rheeder of Harrismith took me to the site and I have benefited from discussions with Dr Karel Zietsman, Botanist, and officials from the Free State Department of Environmental Affairs during a previous investigation in this same area.

REFERENCES

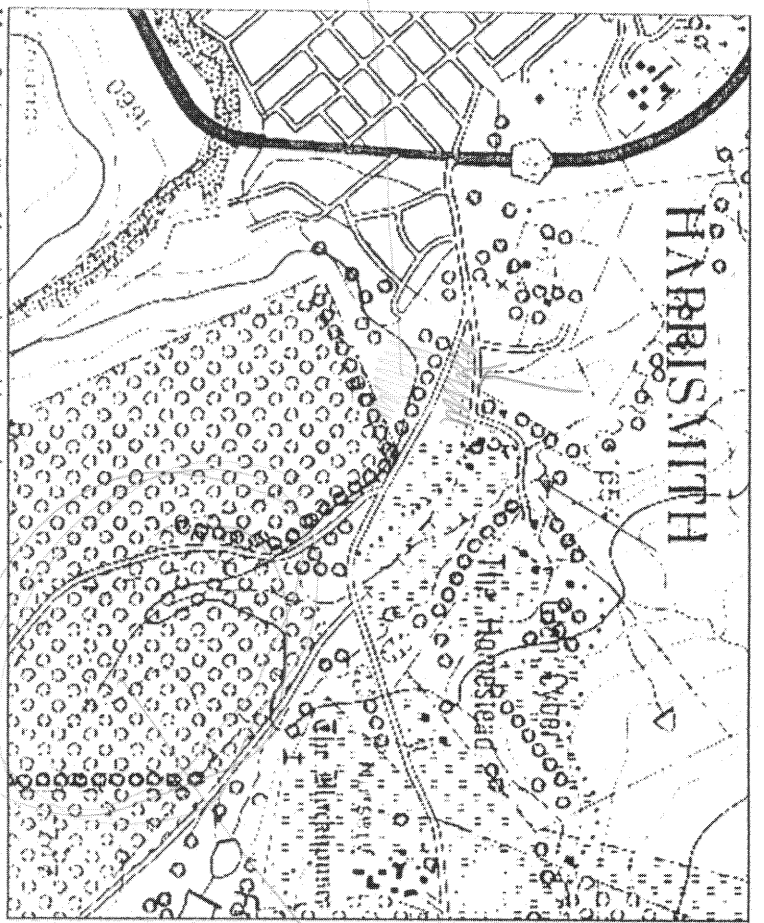
- DEACON, J. 1992. Archaeology for Planners, Developers and Local Authorities. Cape Town: National Monuments Council.
- DREYER, J.J.B. 1992. The Iron Age Archaeology of Doornpoort, Winburg, Orange Free State. Navorsinge van die Nasionale Museum, Bloemfontein, Vol.8(7):262-390.
- DREYER, J. 1996. Introduction to Free State Iron Age Archaeology. In: Guide to archaeological sites in the Free State and Lesotho. Southern African Association of Archaeologists (SA3), 14th Biennial Conference, Bloemfontein, Post-conference tour 5-8 July 1996. Bloemfontein: National Museum.
- DREYER, J. 2000. Mountains and Rivers of the Free State - Manual for field research / Berge en Riviere van die Vrystaat - Handleiding vir veldnavorsing. Bloemfontein: University of the Free State, Department of Anthropology, Occasional Paper No. 2.
- HAWKINS, E.B. 1982. The story of Harrismith. Ladysmith: Westcott Printing.
- HUMPHREYS, A.J.B. 1986. Searching for the past. Cape Town: David Phillip.
- MAGGS, T.M. 1979. Iron Age Communities of the Southern Highveld. Pietermaritzburg: Natal Museum.

- PISTORIUS, J.C.C. 1994. Eskom Archaeological Site Identification Guide. Johannesburg: Eskom.
- STEYTLER, F.A. 1932. Die geskiedenis van Harrismith. Bloemfontein: Nasionale Pers.
- SURVEYOR-GENERAL O.F.S. 1973. Index of Orange Free State Farms. Bloemfontein.



Map 1 Locality of Harrismith.

hallyo



Map 2 Locality of land indicated by red arrow.

Binnel Mlafa Camp

LIST OF ILLUSTRATIONS:

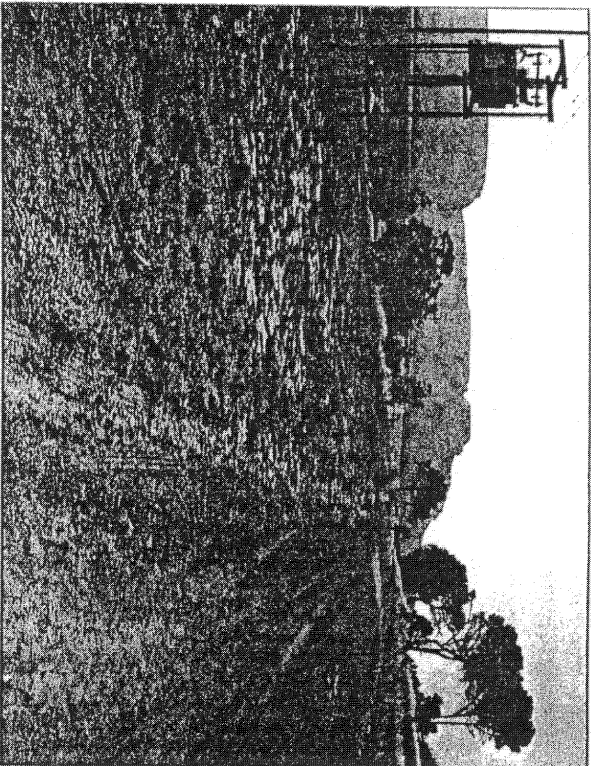


Fig. 1 View along the entrance road to the Botanical Gardens, facing east.

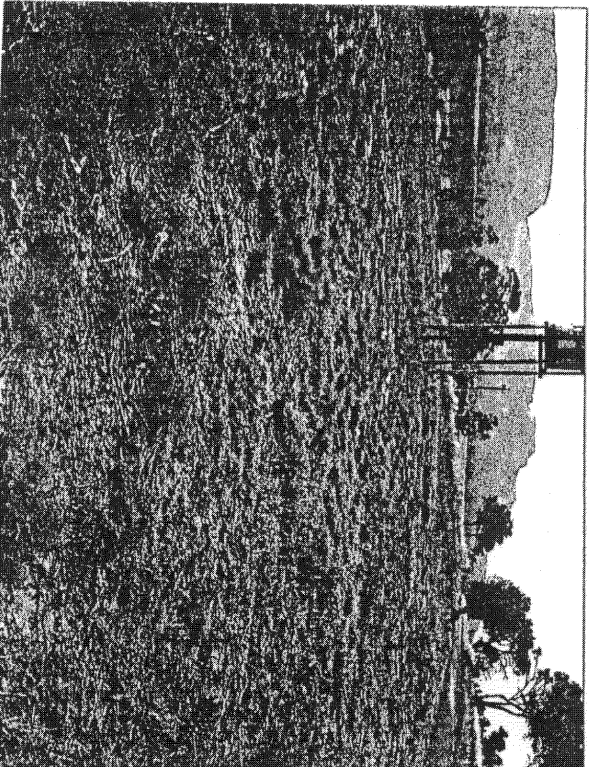


Fig. 2 The area between Berg Road and the road to the Botanical Gardens.

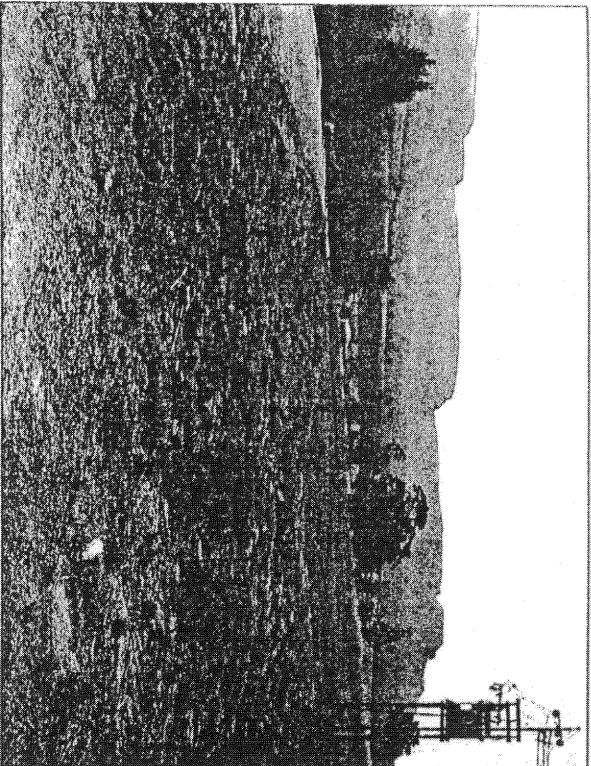


Fig 3 The area adjacent to Berg Road.

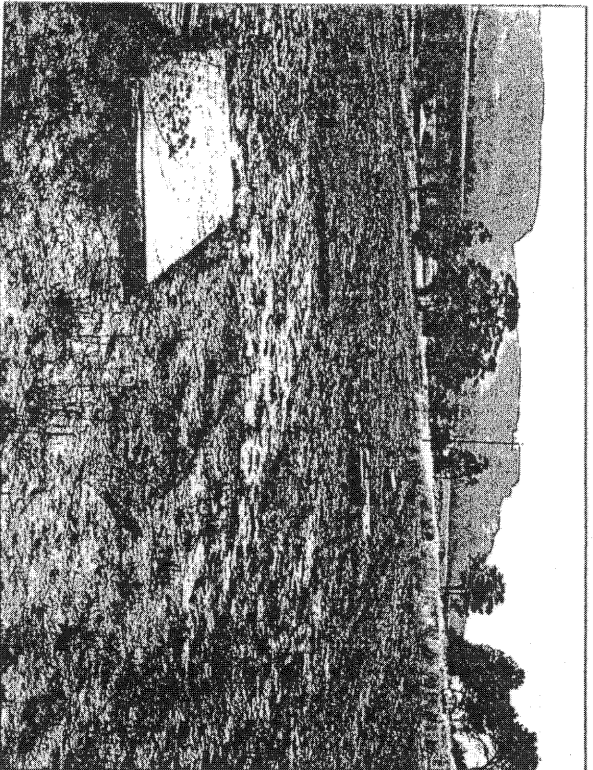


Fig 4 Concrete blocks near the junction between Berg Road and the entrance to the Botanical Gardens.

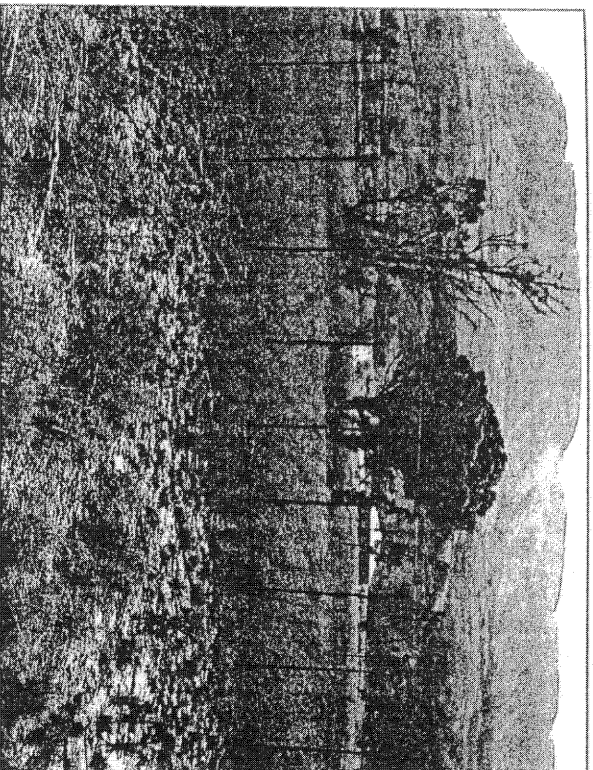


Fig 5 The site from the Botanical Gardens road facing north.

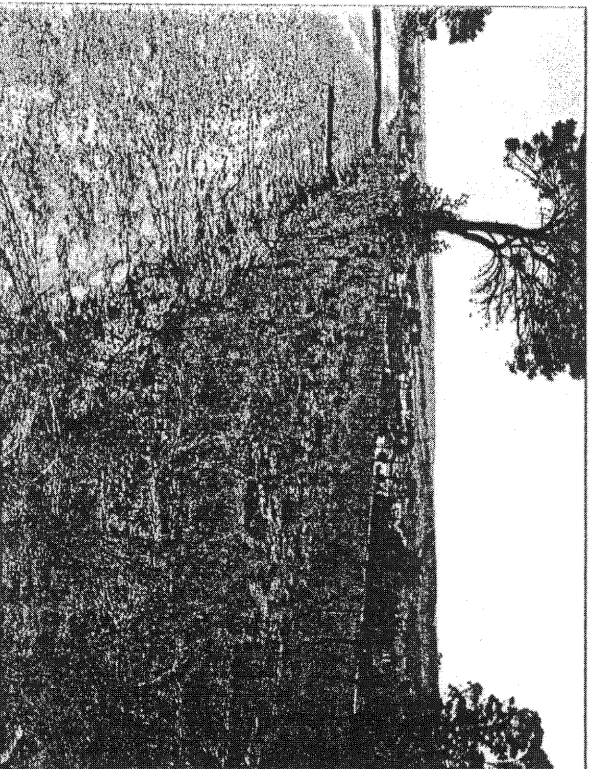


Fig.6 View along the Botanical Gardens road facing towards Harrismith town.

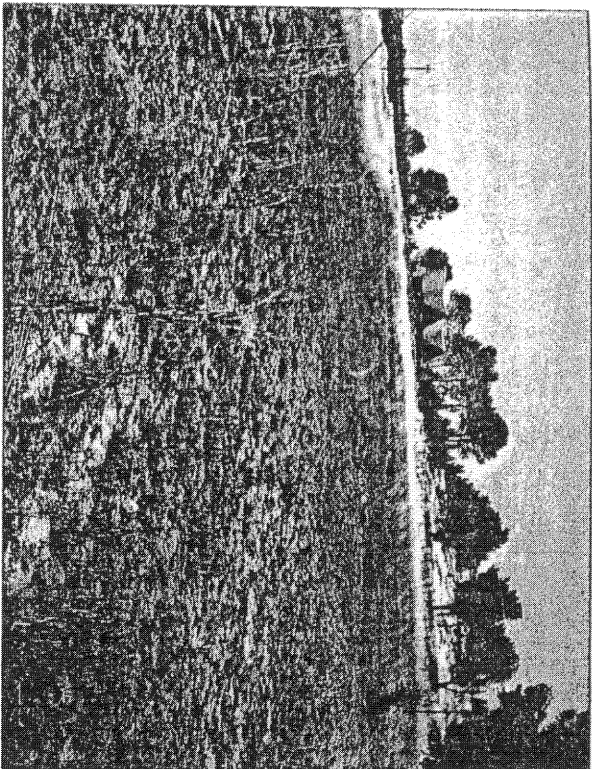


Fig. 7 The land below the Botanical Gardens road. Entrance at the back.

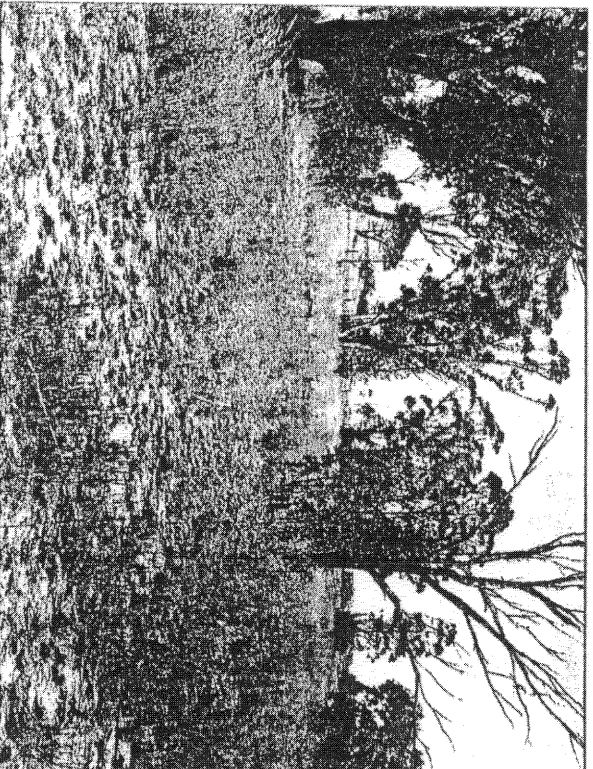


Fig. 8 The land below the Botanical Gardens road.

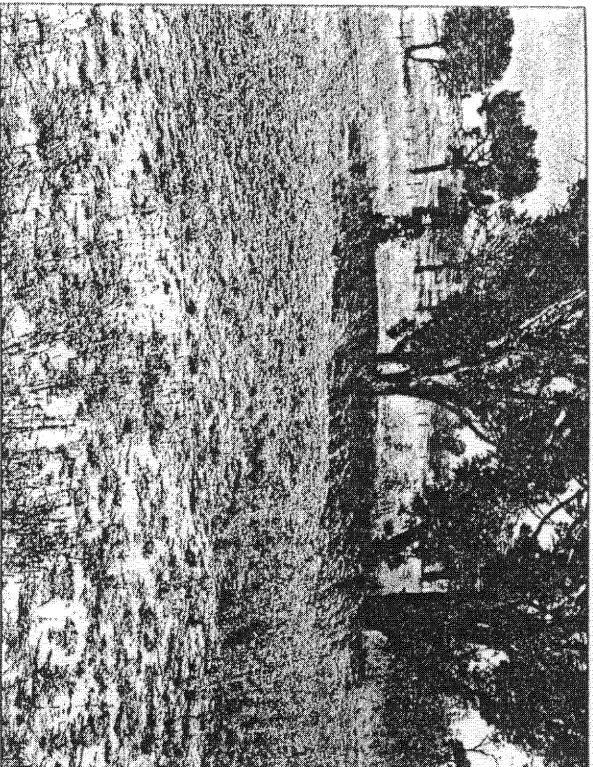


Fig.9 Trees below the Botanical Gardens road.

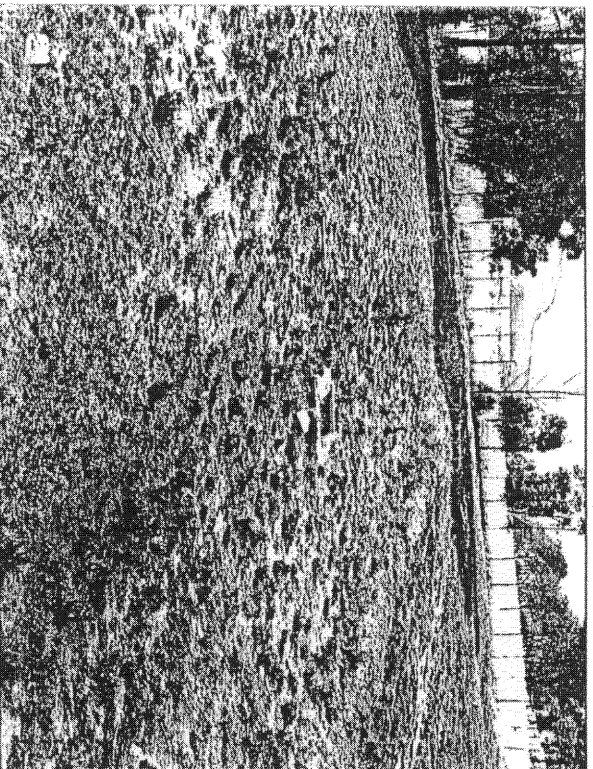


Fig. 10 Facing east from the Berg and Botanical Gardens Road.
Note remains of built structures.



Fig. 11 More building debris just above Berg Road.



Fig. 12 Debris above Berg Road.

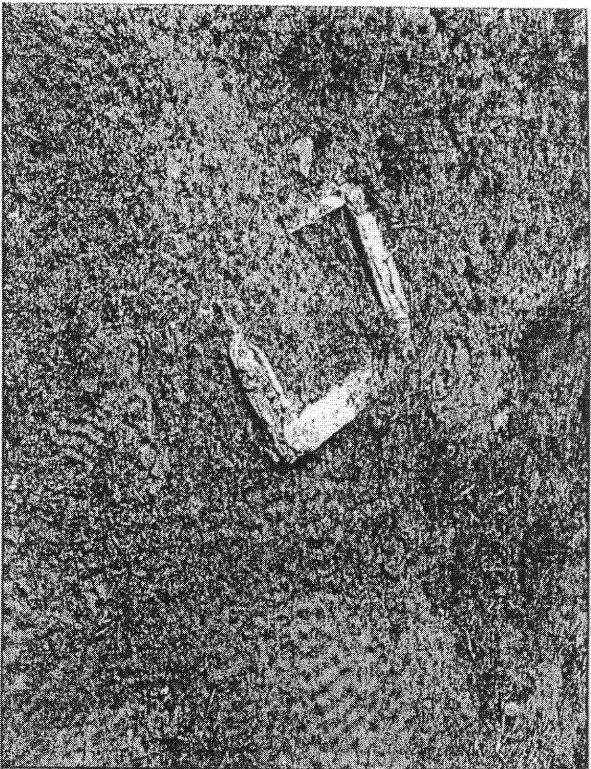


Fig.13 Remains above Berg Road.

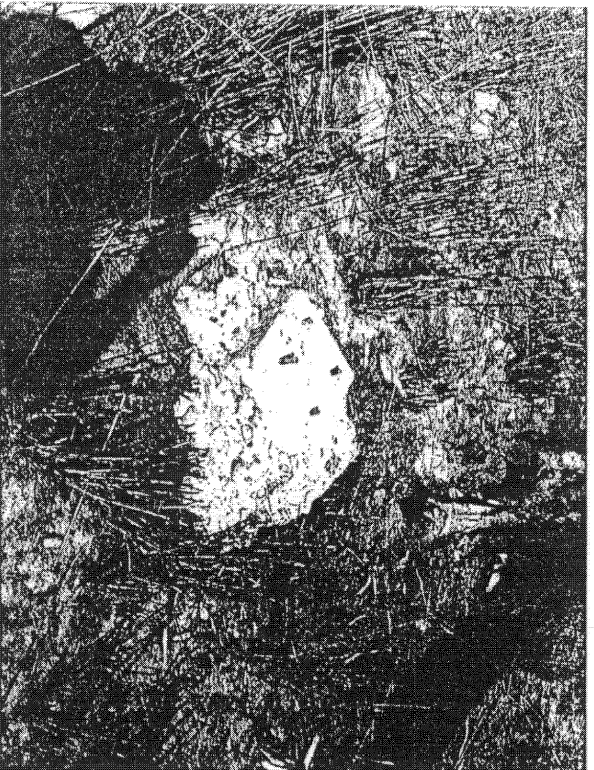


Fig.14 Concrete blocks above Berg Road.

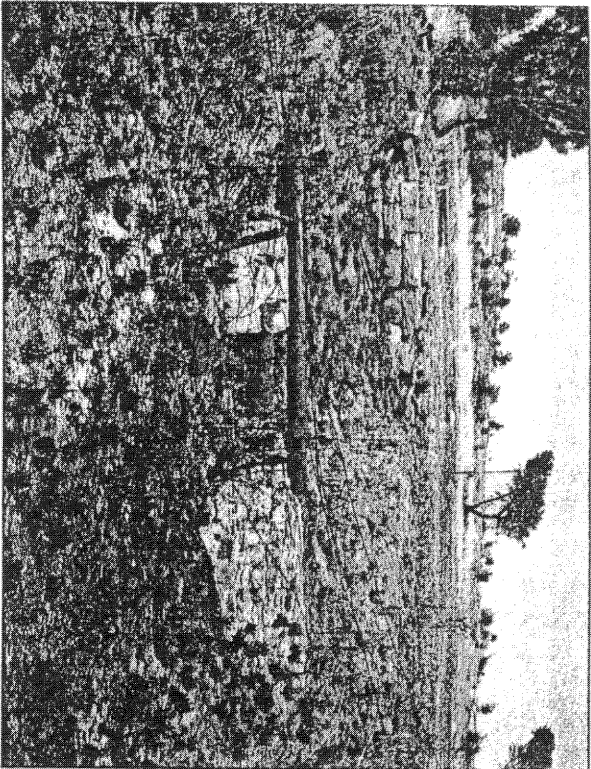


Fig. 15 Water pipe running through the area.

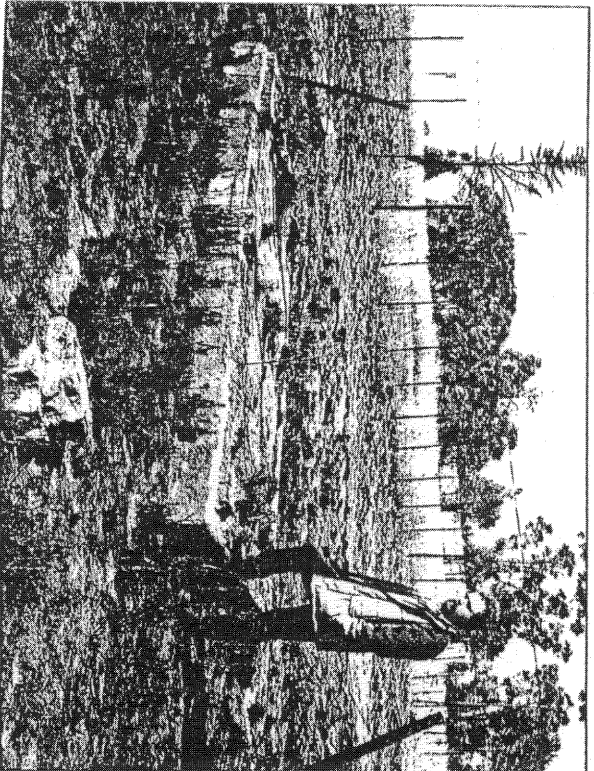


Fig. 16 Old foundation blocks on the surface.

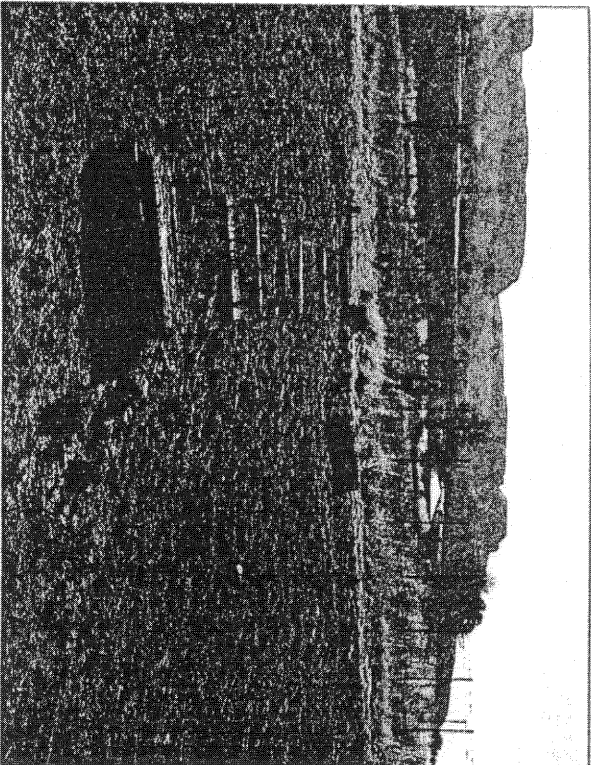


Fig. 17 Concrete blocks of unknown origin on the surface.

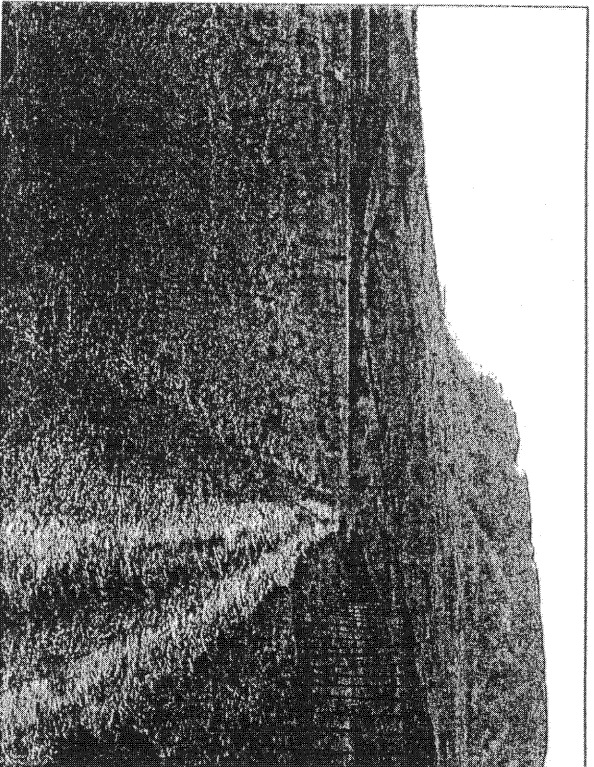


Fig. 18 Facing north across the western part of the land.

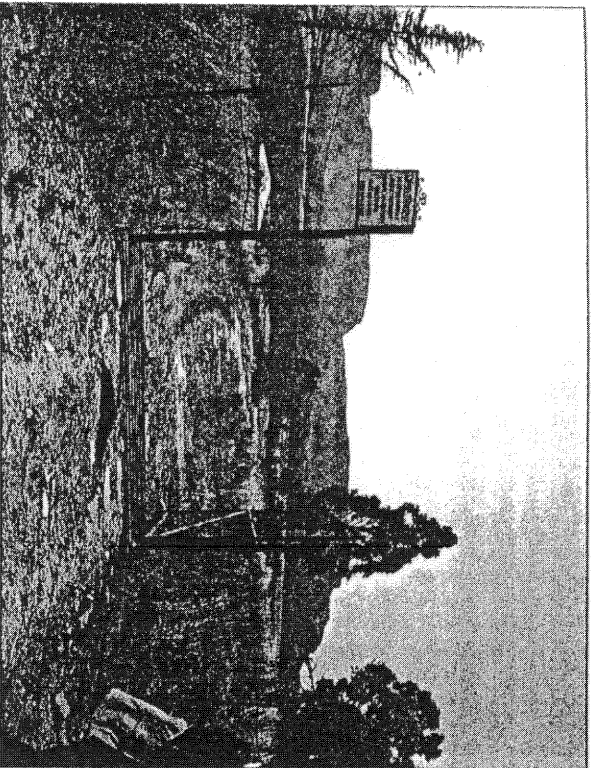


Fig. 19 Entrance to Glen Khyber. Roof of yellow house to the left.

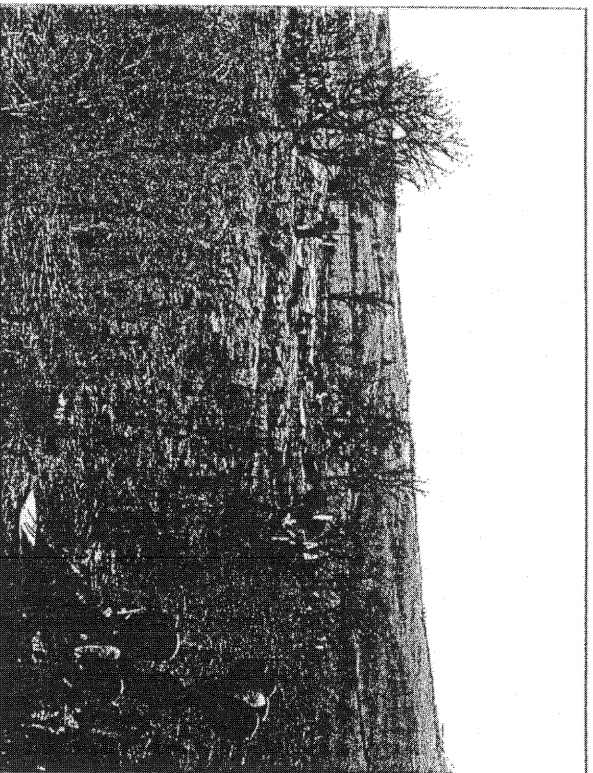


Fig. 20 Ruins of old farm house.

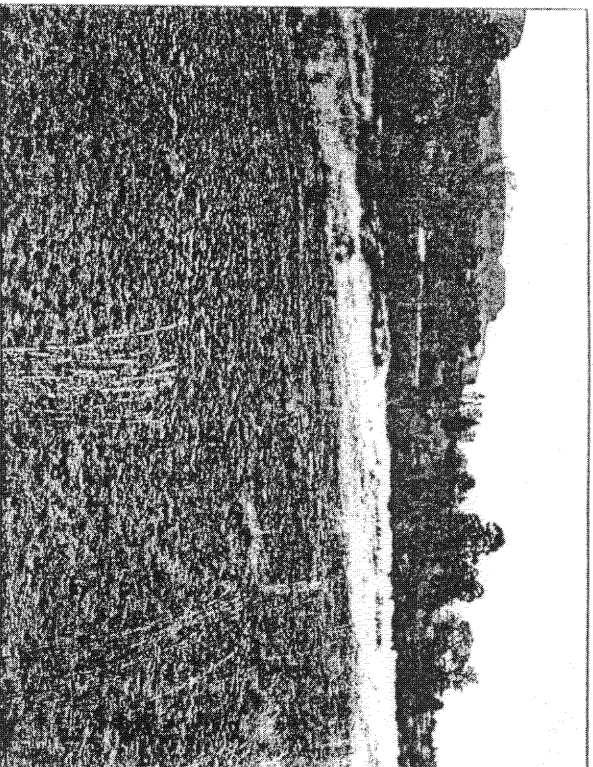


Fig.21 View along the riverfront facing east.

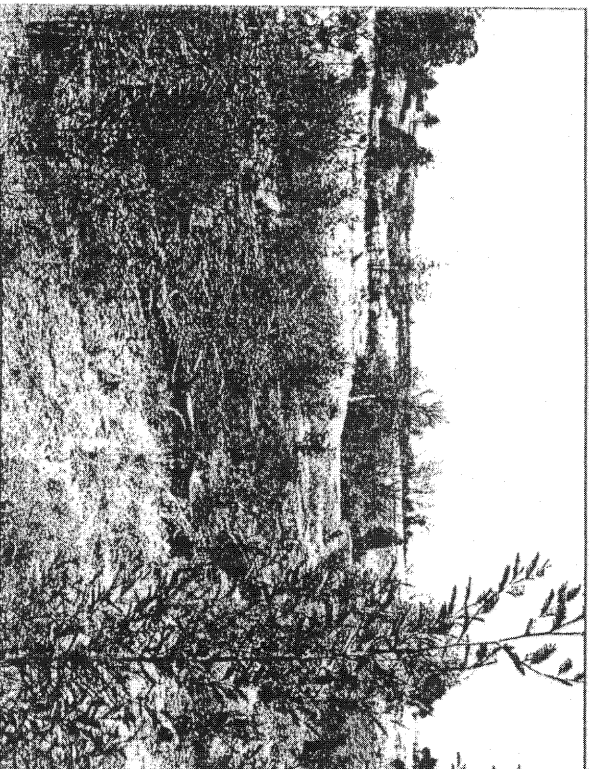


Fig.22 Wattle trees along the riverfront.