

COBUS DREYER

Pr. Archaeologist/Heritage Specialist

P.O. Box 12910
BRANDHOF 9324
Bloemfontein
dreyerj@telkomsa.net

Tel: 051-444 1187
Fax: 051-444 4395
Cell: 083 357 7982

21 April 2006

ARCHAEOLOGICAL AND CULTURAL HERITAGE ASSESSMENT OF THE PROPOSED WATER RESERVOIR AND PIPELINE INSTALLATION AT LADYBRAND, FREE STATE

INVESTIGATION

The land on the commonage of Ladybrand, identified for the installation of a water reservoir and pipeline, was visited on 25 March 2006.

The land was examined for possible archaeological and historical material and to establish the potential impact on any cultural material that might be found. The Heritage Impact Assessment (HIA) is done in terms of the National Heritage Resources Act (NHRA), (25 of 1999) and under the Environmental Conservation Act, (73 of 1989).

LOCALITY

The installation will be done on the farm Brightside 338, located to the north of Ladybrand. (2927AB) (Map 2). The cemetery, which is presently used by the people from the township to bury their dead, lies on the hill (Fig.2).

The area lies adjacent to the existing township and is covered with scatters of building rubble and household debris. Thick stands of Kikuyu grass are found at the site (Fig.5).

The following GPS co-ordinates (Cape scale) were taken.

High point 29°10'21"S 027°28'39"E Altitude 1583m (Fig.1)

Reservoir stand 29°10'23"S 027°28'39"E Altitude 1581m (Fig.3).

Pipeline 29°10'37"S 027°28'39"E Altitude 1551m (Fig.6).

FINDS

The land lies adjacent to the residential area for many years and does not contain any archaeological, cultural or historical remains.

No indication of any archaeological or historical material was found on the surface neither were any stone tools or ceramic ware found.

RECOMMENDATIONS

No obvious reasons could be found to delay the commencement of further planning and development of the site.

After examination I recommend that the proposed developments may proceed.

MITIGATION

Concerning the area for the proposed development, no mitigation measures are needed.

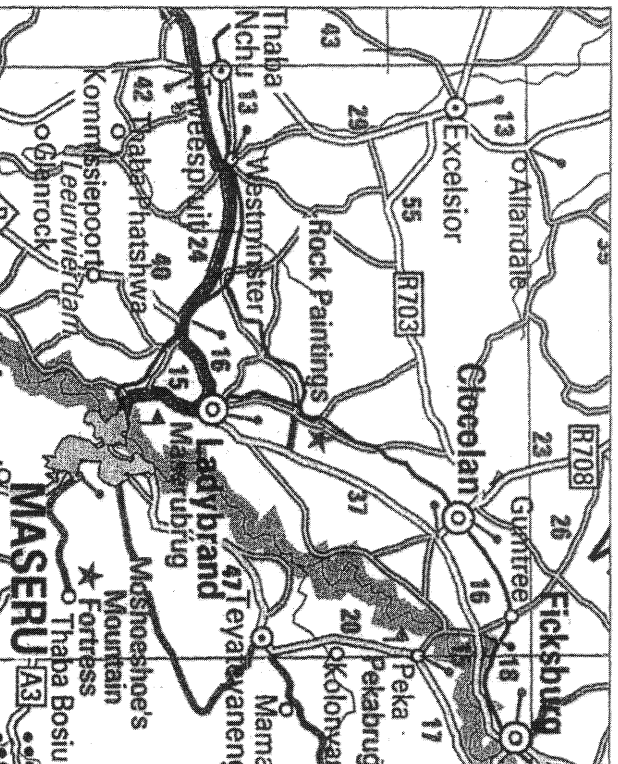
ACKNOWLEDGEMENTS

I thank Cedric Nelson of Bokamoso Environmental Consultants, Bloemfontein, for involving me in the project.

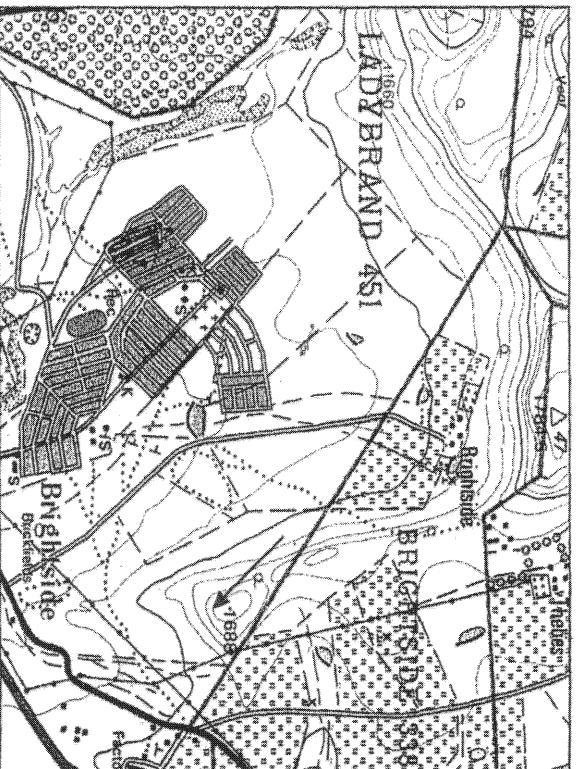
SELECT BIBLIOGRAPHY:

- DEACON, J. 1992. Archaeology for Planners, Developers and Local Authorities. Cape Town: National Monuments Council.
- DREYER, J. 1996. Introduction to Free State Iron Age Archaeology. In: Guide to archaeological sites in the Free State and Lesotho. Southern African Association of Archaeologists (SA3), 14th Biennial Conference, Bloemfontein, Post-conference tour 5-8 July 1996. Bloemfontein: National Museum.
- DREYER, J. 2000. Mountains and Rivers of the Free State - Manual for field research / Berge en Riviere van die Vrystaat – Handleiding vir veldnavorsing. Bloemfontein: University of the Free State, Department of Anthropology, Occasional Paper No. 2.
- HUMPHREYS, A.J.B. 1986. Searching for the past. Cape Town: David Phillip.
- MAGGS, T.M. 1976. Iron Age Communities of the Southern Highveld. Pietermaritzburg: Natal Museum.
- PISTORIUS, J.C.C. 1994. Eskom Archaeological Site Identification Guide. Johannesburg: Eskom.
- SURVEYOR-GENERAL O.F.S. 1973. Index of Orange Free State Farms. Bloemfontein.

LIST OF ILLUSTRATIONS:



Map 1 Locality of Ladybrand in relation to towns along the Free State - Lesotho border.



Map 2 Position of water reservoir and pipeline at Brightside 338, Ladybrand (2927AB).

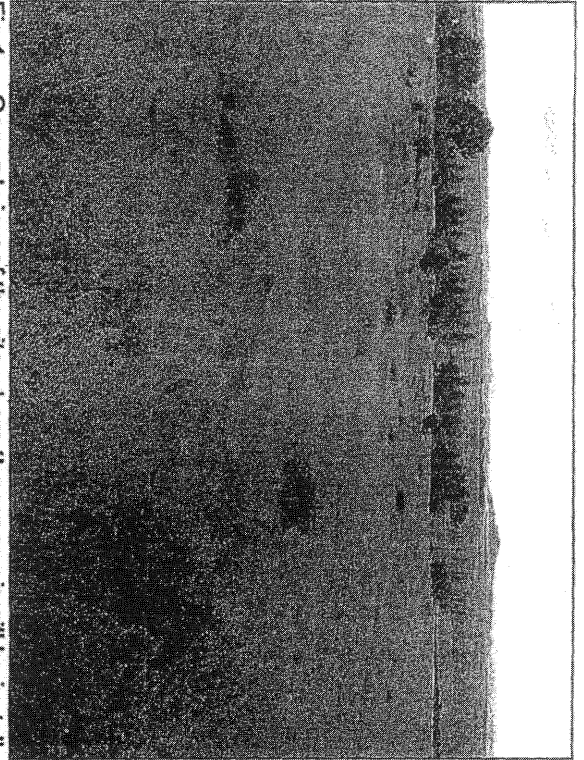


Fig. 1 General view of the site where the reservoir will be installed.

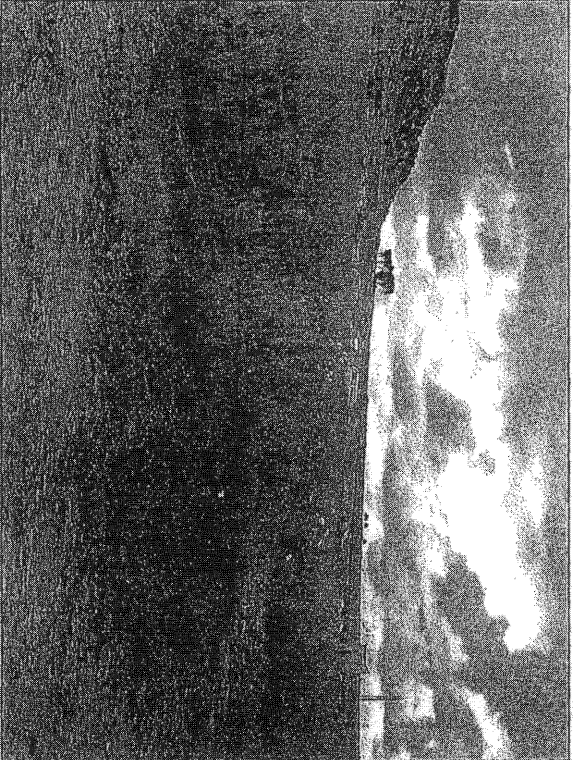


Fig. 2 The cemetery lies just over the hill from the township.

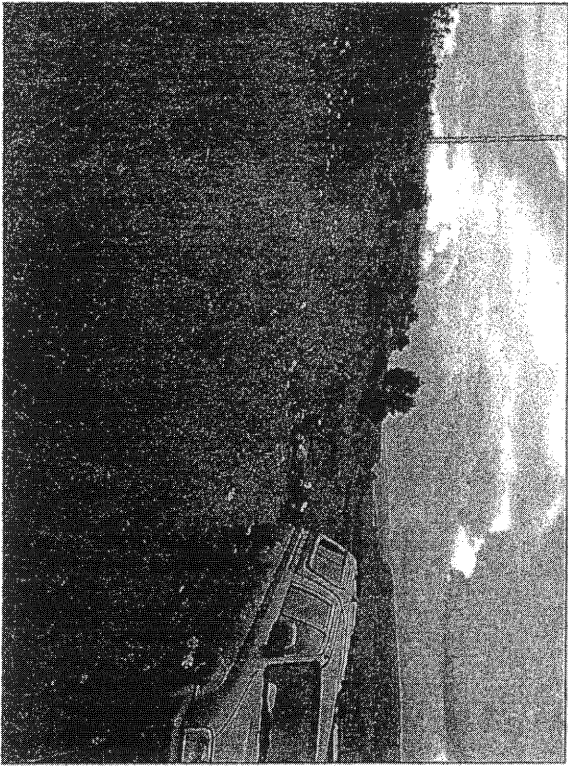


Fig.3 The high point on the hill.

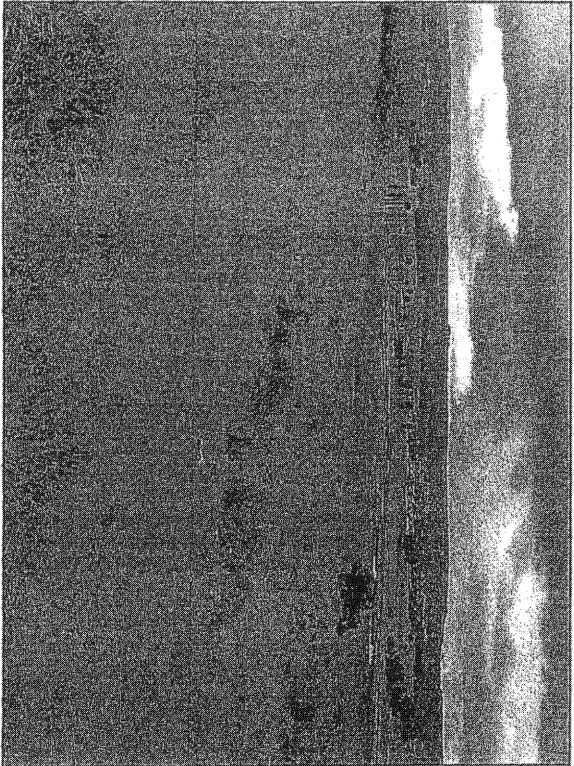


Fig.4 Large patches of Kikuyu grass cover the soil surface.

252

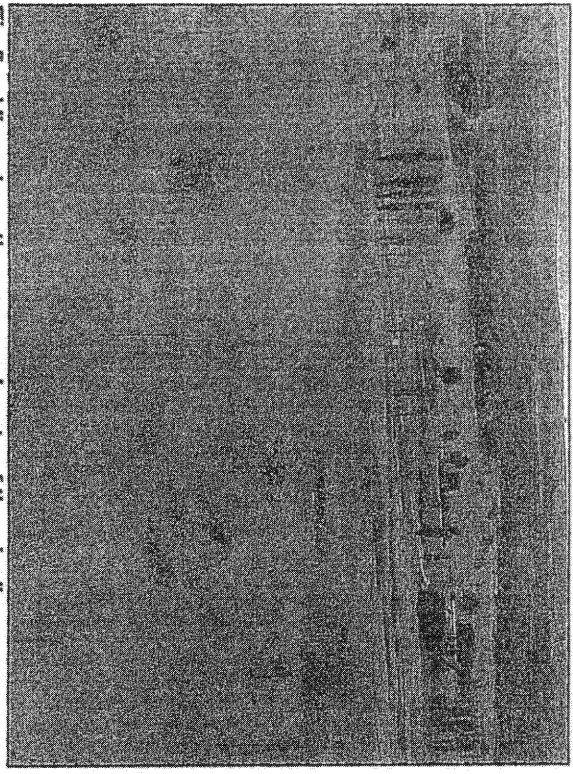


Fig.5 View along the proposed route of the pipeline.

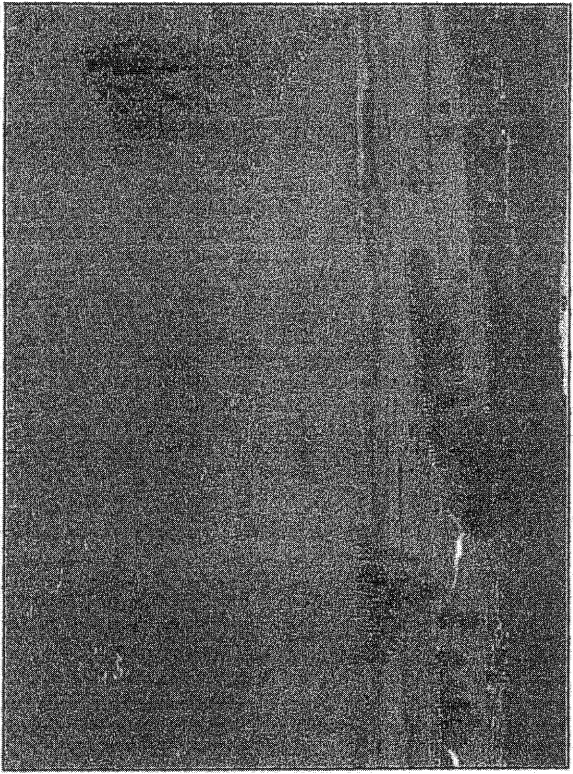


Fig.6 View from the hill towards the town of Ladybrand.

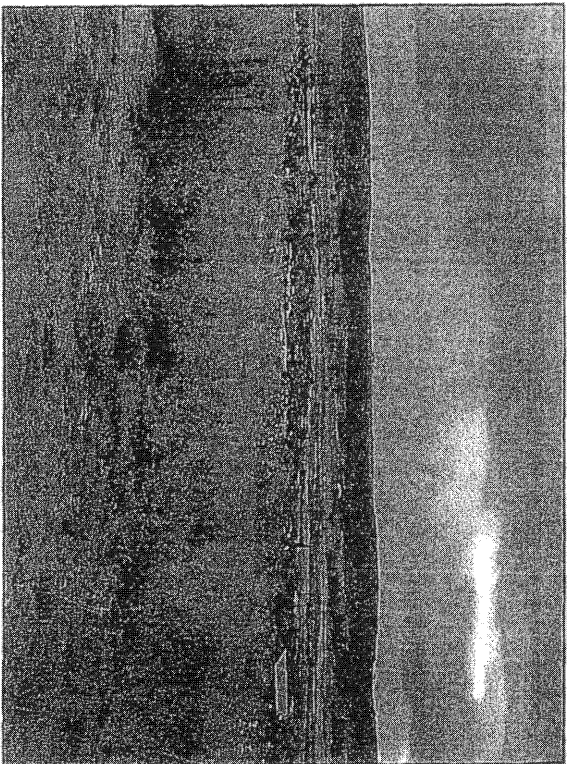


Fig. 7 View at the township below the hill.

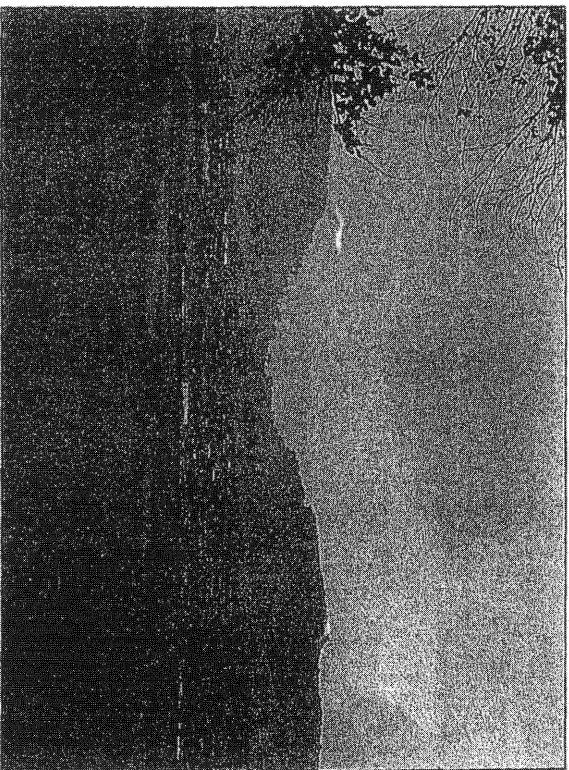
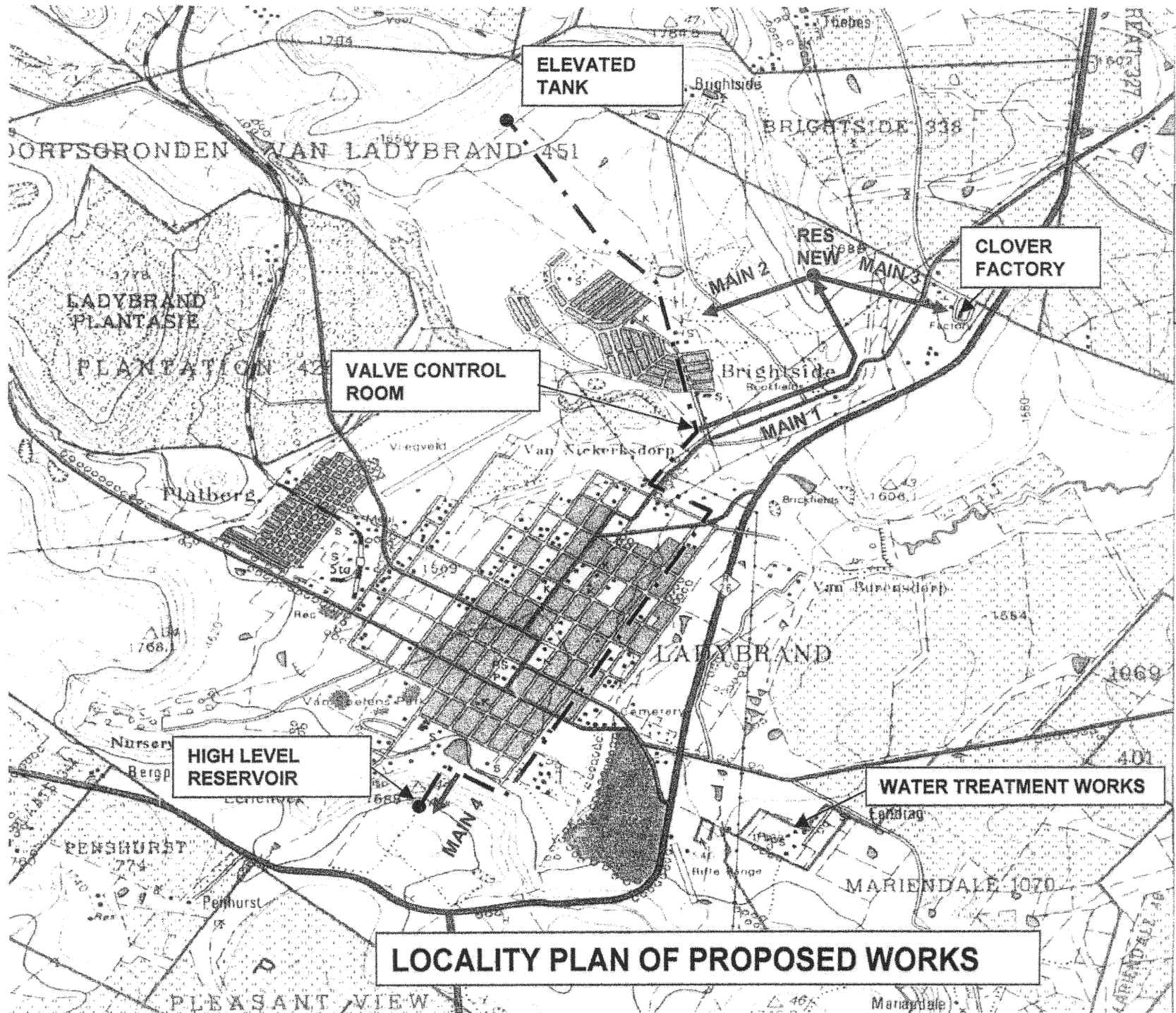


Fig. 8 View from Ladybrand towards the neck above the township.



LEGEND

--- EXISTING

— NEW

Main 1 – Gravity Main

Main 2 – Gravity Main

Main 3 – Gravity Main

Main 4 – Pumping Main

LOCALITY PLAN OF PROPOSED WORKS

FIGURE 2