



COBUS DREYER

Pr. Archaeologist/Heritage Specialist

**P.O. Box 12910
BRANDHOF 9324
Bloemfontein
dreyerj@telkomsa.net**

**Tel: 051-444 1187
Fax: 051-444 4395
Cell: 083 357 7982**

23 JUNE 2006

FIRST PHASE ARCHAEOLOGICAL AND CULTURAL HERITAGE ASSESSMENT OF THE PROPOSED TOWNSHIP DEVELOPMENTS AT LADYBRAND, FREE STATE

EXECUTIVE SUMMARY

The new proposed residential developments are planned at Ladybrand, Free State.

No archaeological and cultural remains were found in the proposed area of development.

The proposed developments and planning of the site may proceed.

INTRODUCTION AND DESCRIPTION

INVESTIGATION

The site for the proposed residential developments at Manyatseng, Ladybrand was visited on 14 December 2005. Mr Piet de Bie from Phethogo Consultants, Bloemfontein, gave indications to the site.

The area was examined for possible archaeological and historical material and to establish the potential impact on any cultural material that might be found. The Heritage Impact Assessment (HIA) is done in terms of the National Heritage Resources Act (NHRA), (25 of 1999) and under the Environmental Conservation Act, (73 of 1989).

LOCALITY

The proposed residential developments are planned at Ladybrand, Free State (Map 1).

The proposed area of developments will cover about 40 hectares and is located to the north of the town and adjacent to the existing township of Manyatseng (Map 2&3).

The area consists of a cover of natural grassland.

The following GPS coordinates (Cape scale) were taken (2827AB) (Surveyor-General 1973):

A existing township	29°09'53"S. 027°27'06"E Altitude 1588m (Fig.1).
B	29°09'46"S. 027°27'05"E Altitude 1596m (Fig.2).
C	29°09'30"S. 027°27'19"E Altitude 1629m (Fig.3).
D	29°09'36"S. 027°27'23"E Altitude 1610m (Fig.4).

RESULTS

The land proposed for residential developments lie adjacent to the existing township.

No indication of any archaeological or historical material was found in the proposed area.

IMPACT ASSESSMENT

The proposed residential developments at Ladybrand will have no impact on any archaeological or cultural heritage remains at the site.

RECOMMENDATIONS

There are no obvious reasons to delay the commencement of further planning and development of the site and I recommend that the proposed residential developments at Ladybrand should proceed.

MITIGATION

Concerning the area for the proposed developments, no mitigation measures will be required.

ACKNOWLEDGEMENTS

I thank Me Piet de Bie of Phethogo Consulting, Bloemfontein, for involving me in the project.

SELECT BIBLIOGRAPHY:

DEACON, J. 1992. Archaeology for Planners, Developers and Local Authorities. Cape Town: National Monuments Council.

DREYER, J. 1996. Introduction to Free State Iron Age Archaeology. In: Guide to archaeological sites in the Free State and Lesotho. Southern African Association of Archaeologists (SA3), 14th Biennial Conference, Bloemfontein, Post-conference tour 5-8 July 1996. Bloemfontein: National Museum.

DREYER, J. 2000. Mountains and Rivers of the Free State - Manual for field research / Berge en Riviere van die Vrystaat – Handleiding vir veldnavorsing. Bloemfontein: University of the Free State, Department of Anthropology, Occasional Paper No. 2.

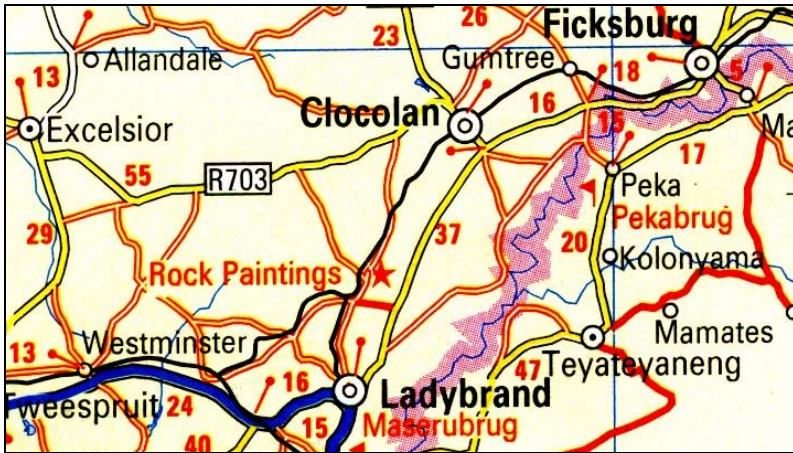
HUMPHREYS, A.J.B. 1986. Searching for the past. Cape Town: David Philip.

MAGGS, T.M. 1976. Iron Age Communities of the Southern Highveld. Pietermaritzburg: Natal Museum.

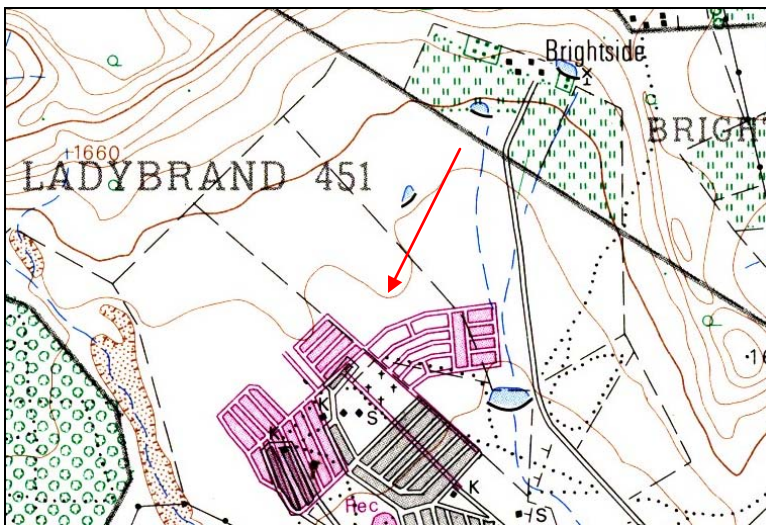
PISTORIUS, J.C.C. 1994. Eskom Archaeological Site Identification Guide. Johannesburg: Eskom.

SURVEYOR-GENERAL O.F.S. 1973. Index of Orange Free State Farms. Bloemfontein.

LIST OF ILLUSTRATIONS



Map 1 Locality of Ladybrand in relation to Excelsior, Ficksburg and Clocolan.



Map 2 Locality of the proposed development at Ladybrand (2927AB).



Map 3 Locality of the proposed housing developments at Ladybrand. GPS points indicated A-D.



Fig.1 View from existing township at Manyatseng towards the hill.



Fig.2 View from point B towards the existing township.



Fig.3 General view across the area of development.



Fig.4 View along the line A-D.