



COBUS DREYER

Pr. Archaeologist/Heritage Specialist

**P.O. Box 12910
BRANDHOF 9324
Bloemfontein
dreyerj@telkomsa.net**

**Tel: 051-444 1187
Fax: 051-444 4395
Cell: 083 357 7982**

18 July 2006

FIRST PHASE ARCHAEOLOGICAL AND CULTURAL HERITAGE ASSESSMENT OF THE PROPOSED RESIDENTIAL DEVELOPMENTS AT VRIENDSCHAP 772, PETRUS STEYN, FREE STATE

INVESTIGATION

The land for the proposed residential developments on the farm Vreindschap 772, Petrus Steyn, Free State, was visited on 11 April 2006 in the company of Dr Francois Retief, Environmental Consultant from Potchefstroom.

The land was examined for possible archaeological and historical material and to establish the potential impact on any cultural material that might be found. The Heritage Impact Assessment (HIA) is done in terms of the National Heritage Resources Act (NHRA), (25 of 1999) and under the Environmental Conservation Act, (73 of 1989).

LOCALITY

The proposed residential developments will be established as an extension of the existing Mamafubedu township on a portion of the Remainder of the farm Vriendschap 772 near Petrus Steyn, (in the district of Lindley) Free State (Surveyor-General 1973) (Map 2). The proposed developments will consist of 500 erven.

The land is located to the west of the R707 road between Lindley and Petrus Steyn adjacent to the existing Mamafubedu residential area (Map 1). The whole area is part of old plough lands and is presently covered with natural grass used as communal commonage grazing (Fig.1).

The remains of old sewerage ponds are also visible on the surface (Fig.3).

The following GPS co-ordinate was taken (Cape scale) (2728CA).

New development 27°40'20"S 028°08'30"E (Fig.7).

FINDS

A graveyard which contains 44 graves lies nearby. The grave stones only contain names of black people without any dates and it is accepted that inmates of the township are buried here.

No further indication of any archaeological or historical material was found on the surface neither were any stone tools or ceramic ware found.

RECOMMENDATIONS

There is no obvious reason to delay the commencement of further planning and development of the site.

I recommend that the proposed developments may proceed. Care should be taken not to disturb the graves either during the installation of services or during the building process.

MITIGATION

Concerning the area for the proposed development, mitigation measures are needed only in the case of the graves.

ACKNOWLEDGEMENTS

Dr Francois Retief, Environmental Consultant from Potchefstroom, took me to the site and supplied information on this investigation.

SELECT BIBLIOGRAPHY:

DEACON, J. 1992. Archaeology for Planners, Developers and Local Authorities. Cape Town: National Monuments Council.

DREYER, J. 1996. Introduction to Free State Iron Age Archaeology. In: Guide to archaeological sites in the Free State and Lesotho. Southern African Association of Archaeologists (SA3), 14th Biennial Conference, Bloemfontein, Post-conference tour 5-8 July 1996. Bloemfontein: National Museum.

DREYER, J. 2000. Mountains and Rivers of the Free State - Manual for field research / Berge en Riviere van die Vrystaat – Handleiding vir veldnavorsing. Bloemfontein: University of the Free State, Department of Anthropology, Occasional Paper No. 2.

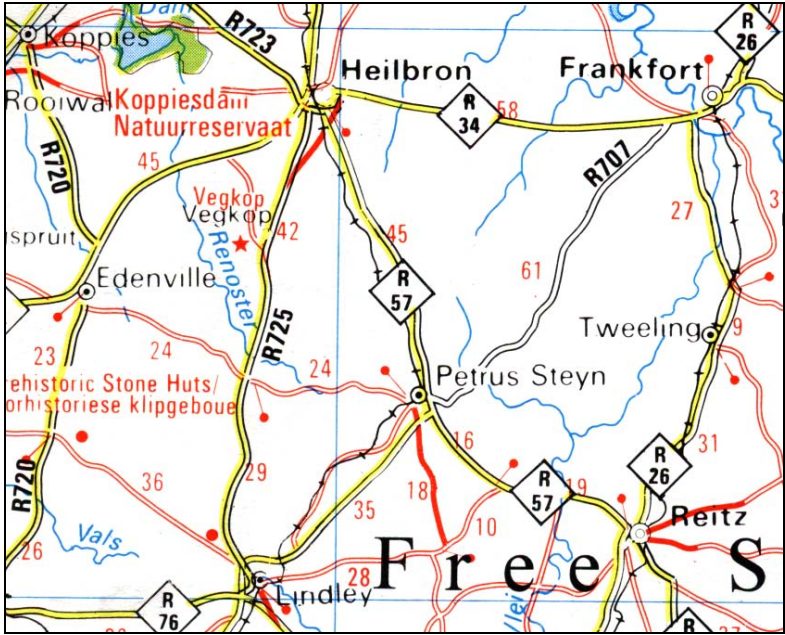
HUMPHREYS, A.J.B. 1986. Searching for the past. Cape Town: David Philip.

MAGGS, T.M. 1976. Iron Age Communities of the Southern Highveld. Pietermaritzburg: Natal Museum.

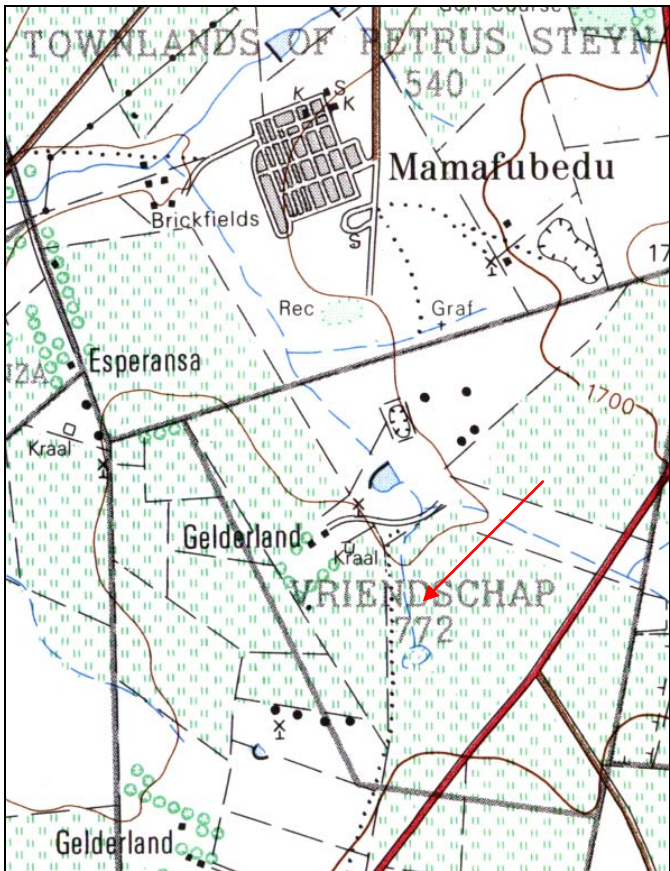
PISTORIUS, J.C.C. 1994. Eskom Archaeological Site Identification Guide. Johannesburg: Eskom.

SURVEYOR-GENERAL O.F.S. 1973. Index of Orange Free State Farms. Bloemfontein.

LIST OF ILLUSTRATIONS:



Map 1 Locality of Petrus Steyn in relation to Lindley, Reitz and Heilbron.



Map 2 The proposed residential developments at Vriendschap 772, Petrus Steyn (2728CA).



Fig.1 The proposed area of residential development on Vriendschap 772, Petrus Steyn.



Fig.2 Existing township of Mamafubedu, Petrus Steyn.



Fig.3 Old sewer ponds at Mamafubedu, Petrus Steyn.



Fig.4 Graves at Mamafubedu, Petrus Steyn.



Fig.5 View of some of the graves at Mamafubedu, Petrus Steyn.



Fig.6 Example of an undated grave at Mamafubedu, Petrus Steyn.



Fig.7 General view across the area of development at Mamafubedu, Petrus Steyn.