



COBUS DREYER

Pr. Archaeologist/Heritage Specialist

**P.O. Box 12910
BRANDHOF 9324
Bloemfontein
dreyerj@telkomsa.net**

**Tel: 051-444 1187
Fax: 051-444 4395
Cell: 083 357 7982**

22 MARCH 2006

FIRST PHASE ARCHAEOLOGICAL AND CULTURAL HERITAGE ASSESSMENT OF THE PROPOSED POULTRY FARM DEVELOPMENTS AT VAALKOPPIES 215, ARLINGTON, FREE STATE

INVESTIGATION

Extensions are planned to the existing bio-controlled chicken breeding installations at the farm Vaalkoppies 215 near Arlington, Free State. The farm was visited on 24 February 2006 in the company of Dr Johan du Preez of MDA Environmental Consultants, Bloemfontein.

The land was examined for possible archaeological and historical material and to establish the potential impact on any cultural material that might be found. The Heritage Impact Assessment (HIA) is done in terms of the National Heritage Resources Act (NHRA), (25 of 1999) and under the Environmental Conservation Act, (73 of 1989).

LOCALITY

The developments are planned to the bio-controlled chicken breeding installations (Fig2.1) on the farm Vaalkoppies 215 near Arlington, Free State (Map 1).

The farm lies south of Arlington and to the west of the R707 road to Senekal on the S1097 secondary road (Map 2). The farm Vaalkoppies 215 is located in the district of Senekal (Surveyor-General O.F.S. 1973).

The following GPS co-ordinates (Cape scale) were taken (2827BB).

Proposed extensions 28°06'02"S 027°48'24"E Altitude 1548m (Fig.2).

Bulk gas tank

28°05'56"S 027°48'28"E Altitude 1551m (Fig.3).

FINDS

The existing installations were built on old plough lands with the remaining portion covered in cultivated grazing (Fig.2). This is to be extended in the same region. The area does not contain any cultural or historical material.

No indication of any archaeological or historical material was found on the surface neither were any stone tools or ceramic ware found.

RECOMMENDATIONS

There is no reason to delay the commencement of further planning and development of the site.

I recommend that the proposed developments may proceed.

MITIGATION

Concerning the area for the proposed development, no mitigation measures are needed.

ACKNOWLEDGEMENTS

Dr Johan du Preez of MBA Environmental Consultants, Bloemfontein, took me to the site and supplied information on this investigation.

SELECT BIBLIOGRAPHY:

DEACON, J. 1992. Archaeology for Planners, Developers and Local Authorities. Cape Town: National Monuments Council.

DREYER, J. 1996. Introduction to Free State Iron Age Archaeology. In: Guide to archaeological sites in the Free State and Lesotho. Southern African Association of Archaeologists (SA3), 14th Biennial Conference, Bloemfontein, Post-conference tour 5-8 July 1996. Bloemfontein: National Museum.

DREYER, J. 2000. Mountains and Rivers of the Free State - Manual for field research / Berge en Riviere van die Vrystaat – Handleiding vir veldnavorsing. Bloemfontein: University of the Free State, Department of Anthropology, Occasional Paper No. 2.

HUMPHREYS, A.J.B. 1986. Searching for the past. Cape Town: David Philip.

MAGGS, T.M. 1976. Iron Age Communities of the Southern Highveld. Pietermaritzburg: Natal Museum.

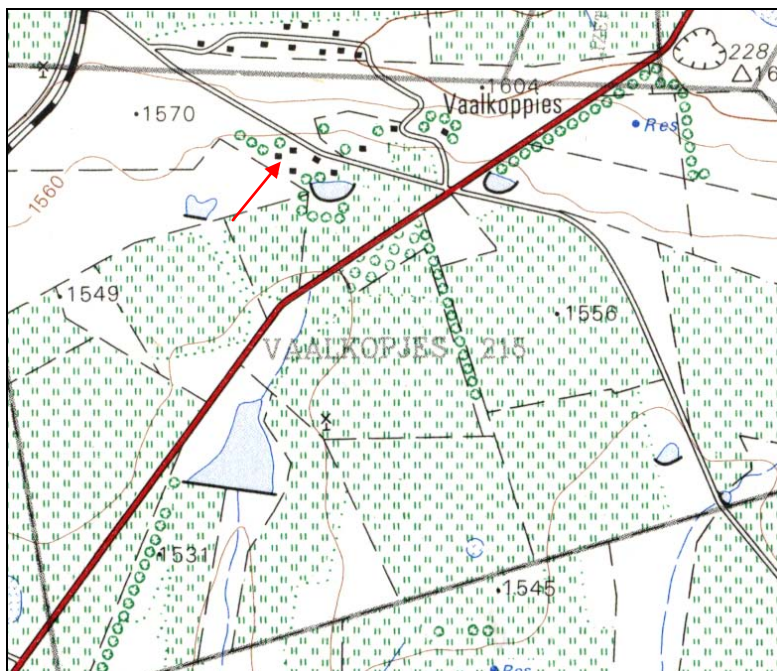
PISTORIUS, J.C.C. 1994. Eskom Archaeological Site Identification Guide. Johannesburg: Eskom.

SURVEYOR-GENERAL O.F.S. 1973. Index of Orange Free State Farms. Bloemfontein.

LIST OF ILLUSTRATIONS:



Map 1 Locality of Arlington in relation to Kroonstad, Steynsrust, Lindley and Ventersburg.



Map 2 Locality of the poultry farm on Vaalkoppies 215, Arlington, along the R707 road to Senekal (2827BB).



Fig.1 View of the existing chicken breeding installations at Vaalkoppies 215, Arlington.



Fig.2 The area proposed for extensions to the chicken breeding installation at Vaalkoppies 215, Arlington.



Fig.3 The position of the bulk gas plant at the chicken breeding installation on the farm Vaalkoppies 215, Arlington.



Fig.4 The chicken breeding installation at Vaalkoppies 215, Arlington facing south.