



COBUS DREYER

Pr. Archaeologist/Heritage Specialist

**P.O. Box 12910
Brandhof
9324
dreyerc.HUM@mail.uovs.ac.za**

**Tel: 051 - 444 1187
Fax: 051 - 401 2363
Cell: 083 - 357 7982**

4 MAY 2005

FIRST PHASE ARCHAEOLOGICAL AND HISTORICAL INVESTIGATION OF THE PROPOSED DEVELOPMENTS ON THE FARM GELUK 196 & LADIESFONTEIN 255 , PARYS, FREE STATE

INVESTIGATION

The proposed residential development at Geluk 196 and Ladiesfontein 255, Parys, was visited and inspected on 2 May 2005. Cornelis van den Berg of Ecoscope Environmental Consultants, Parys, accompanied me to the site.

The area was examined for possible archaeological and historical material and to establish the potential impact on any cultural material that might be found. The Heritage Impact Assessment (HIA) is done in terms of the National Heritage Resources Act (NHRA), (25 of 1999) and under the Environmental Conservation Act, (73 of 1989).

LOCALITY

The proposed development of an equestrian centre and residential stands will take place on the farms Geluk 196 and Ladiesfontein 255 in the district of Parys, Free State.

The property lies about 18km east of Parys on the R59 from Parys to Sasolburg (26°51'29"S. 027°36'05"E. Altitude 1484m) (Maps1&2).

DESCRIPTION

The remains of several old farm structures were identified, plotted by GPS (Cape) and recorded on camera. The area contains a heavy grass cover with scattered stands of Acacia karoo (Soetdoring) and other indigenous trees and

shrubs. There are also concentrations of foreign trees such as Cypress and Blue Gum trees on the farm.

South western corner (26°51'34"S. 027°35'55"E. Altitude 1500m) (Fig.1).

Stone foundation (26°51'32"S. 027°35'58"E. Altitude 1496m) (Fig.2).

Corner of Cambridge & Malan Streets 28°13'53"S. 028°18'16"E. Altitude 1654m

Corner of Malan & Union Streets 28°13'54"S. 028°18'13"E. Altitude 1653m

It is related that the specific piece of land is locally known as the Ninon Laubsher Property. Originally it contained an old double-storeyed house as well as the surgery of a Dr Laubsher. After the last owner passed away some years ago, the house fell into neglect and was gradually plundered and eventually destroyed beyond repair. The land was bought by the Municipality of Bethlehem who finally demolished the house.

From what could be learnt about the history of the house it could be speculated that the original building could have been older than sixty years.

FINDS

No indication of any archaeological or historical material was found on the surface, neither was any stone tools or ceramic ware found.

RECOMMENDATIONS

No obvious reasons could be found to delay the commencement of further planning and development of the site.

After examination by the archaeologist, it is recommended that the proposed developments may proceed.

MITIGATION

Concerning the area for the proposed development, no mitigation measures are needed.

ACKNOWLEDGEMENTS

I thank Dr Johan du Preez for taking me to the site and Thiens Opperman of Bethlehem for information on the history of the original building on the site.

SELECT BIBLIOGRAPHY:

DEACON, J. 1992. Archaeology for Planners, Developers and Local Authorities. Cape Town: National Monuments Council.

HUMPHREYS, A.J.B. 1986. Searching for the past. Cape Town: David Philip.

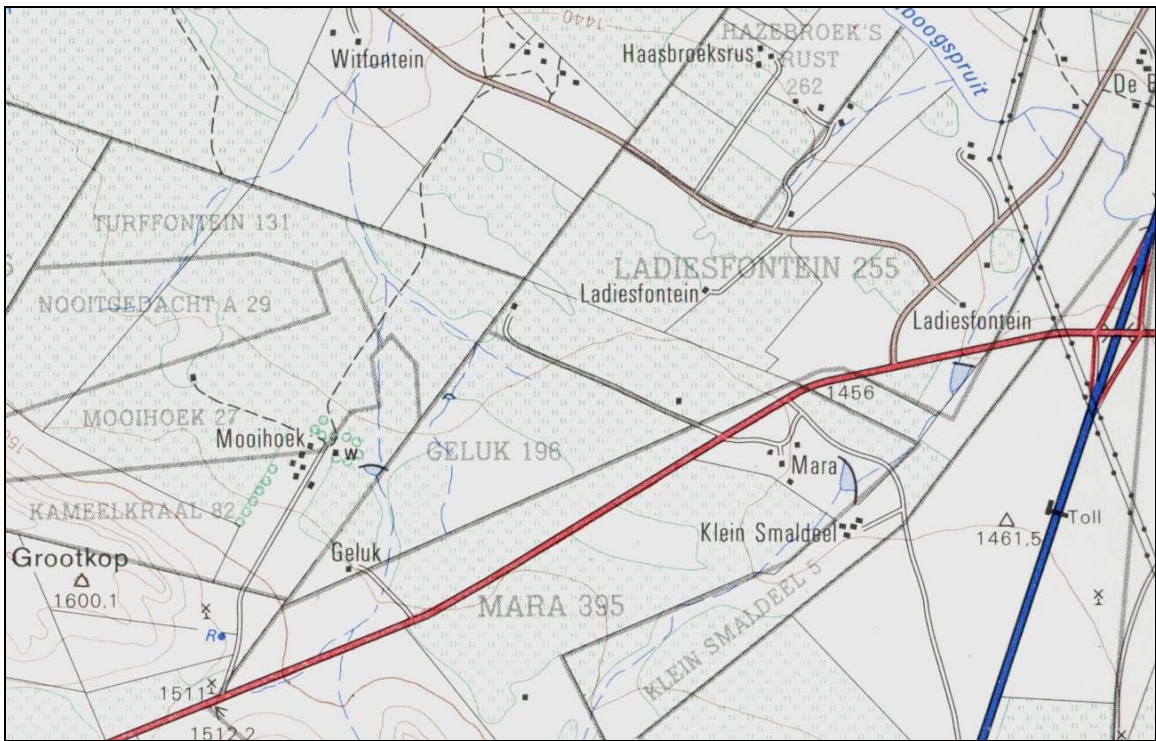
MAGGS, T.M. 1976. Iron Age Communities of the Southern Highveld. Pietermaritzburg: Natal Museum.

PISTORIUS, J.C.C. 1994. Eskom Archaeological Site Identification Guide. Johannesburg: Eskom.

SURVEYOR-GENERAL O.F.S. 1973. Index of Orange Free State Farms. Bloemfontein.



Map1 The locality of the farm Ladies Fontein 559 on the 1:125 000 Vereeniging map of 1928 (Sheet South G-35, P-IV)



Map1 Locality of Geluk 196 and the remainder of Ladiesfontein 255 on the R59 route near the N1 intersection (2627DC 1991).

