



COBUS DREYER

Pr. Archaeologist/Heritage Specialist

**P.O. Box 12910
Brandhof
9324
dreyerj@telkomsa.net**

**Tel: 051-444 1187
Fax: 051-444 4395
Cell: 083 357 7982**

14 October 2005

ARCHAEOLOGICAL AND CULTURAL HISTORIC ASSESSMENT OF THE NEW BORROW PITS ON THE N5 ROAD BETWEEN SENEKAL & PAUL ROUX, FREE STATE

INVESTIGATION

Two new borrow pits on the N5 road between Senekal and Paul Roux, Free State, was inspected on 7 October 2005 in the company of Dr Johan du Preez of Cebo Environmental Consultants, Bloemfontein.

The land was examined for possible archaeological and historical material and to establish the potential impact on any cultural material that might be found. The Heritage Impact Assessment (HIA) is done in terms of the National Heritage Resources Act (NHRA), (25 of 1999) and under the Environmental Conservation Act, (73 of 1989).

LOCALITY

The proposed developments are located at the farms Oriel 1220 (Map 1) and Zyferfontein 246 (Map 2) outside Senekal respectively.

The farm Oriel 1220 is located on the north side of the Sand River to the west of the town (Map 1). The farm is reached via the old Ventersburg road across the Hattingh Bridge on the old way to Steynsrust (2827BC). The proposed new borrow pit will be near the Sand River on the southern border of the farm (Fig.1).

GPS co-ordinates are given in Cape scale:

BP 11 ORIEL 1220 SENEKAL

28°18'51"S. 027°35'59"E. Altitude 1428m.
 Surface grass-cover (Figs.3&4).
 Later Stone Age flakes and scrapers surface (Figs.5&6).
 Petrified wood fragments (Dadoxylon fossils) (Fig.7).
 Stone walling on top of hill (28°18'48"S 027°36'04"E Altitude 1433m)
 (Fig.8).
 Old road along the hill (Fig.4).

BP 12 ZYFERFONTEIN 246 SENEKAL

Zyferfontein 246 (Map 2) is situated on the Senekal - Libertas road near the Cyferfontein Dam (2827BA).

28°14'44"S. 027°39'50"E. Altitude 1491m (Fig.9).
 Grass cover on surface (Fig.10).
 Quarry already in operation (Fig.11).
 Stone walling found outside the proposed area of development
 (28°14'42"S. 027°39'54"E. Altitude 1490m) (Fig.12).

FINDS

Later Stone Age (LSA) flakes and scrapers were found on the surface at Oriel 1220 (Figs.5-6). These finds could relate to Later Stone Age Free State Wilton bifacial tanged and barbed arrowheads that had been found in the erosion dongas at the farm Louterwater 395 near the Sand River down stream from Senekal (Dreyer 1975, Humphreys 1991).

Petrified wood fragments (Dadoxylon fossils) were discovered on the surface (Fig.7).

The remains of a stonewall were found on top of hill at Oriel 1220 (Fig.8).

An old road could be seen along the hill (Fig.4) at Oriel 1220 Senekal. The track is not shown on the Anglo-Boer War map of the area but it could be the remains of the old road from Senekal to Ventersburg.

A low-level aerial photograph shows the position of the proposed borrow pit on Oriel 1220, Senekal (Fig.1) and confirms that there are no other stone walled structures in the area.

The remains of stone walls were found at Zyferfontein 246 outside the proposed area of development (28°14'42"S. 027°39'54"E. Altitude 1490m) (Fig.12).

No ceramics were recovered neither were traces of rock art or graffiti of historical significance found at any of the sites.

DISCUSSION

Every archaeological and historical site is unique and should be treated as a non-renewable commodity. All efforts should be made to avoid any unnecessary disturbance or destruction of the area. I stress, therefore, that in case of the discovery of any human skeletal material, stone tools, pottery or other archaeological material of significance during the course of the work all activities should temporarily be stopped in the specific area for inspection by the archaeologist or other specialists from the University of the Free State, Bloemfontein.

MITIGATION & RECOMMENDATION

Concerning the areas for the proposed developments, mitigation measures will be needed at Oriel 1220 Senekal. I recommend that a surface collection of the stone flakes and pieces of petrified wood should be made BEFORE the commencement of any work at the site. The material should be given to the National Museum, Bloemfontein, for preservation and curation.

No obvious reason could be found to delay the commencement of the work and it is recommended that the proposed development may proceed.

ACKNOWLEDGEMENTS

Dr Johan du Preez of CEBO Environmental Consultants, Bloemfontein, took me to the site and supplied information on this investigation.

SELECT BIBLIOGRAPHY:

DEACON, J. 1992. Archaeology for Planners, Developers and Local Authorities. Cape Town: National Monuments Council.

DREYER, J.J.B. 1975. Tanged and barbed arrowheads. South African Archaeological Bulletin 30:44.

DREYER, J.J.B. 1992. The Iron Age Archaeology of Doornpoort, Winburg,

Orange Free State. Navorsing van die Nasionale Museum, Bloemfontein, Vol.8(7):262-390.

DREYER, J. 1996. Introduction to Free State Iron Age Archaeology. In: Guide to archaeological sites in the Free State and Lesotho. Southern African Association of Archaeologists (SA3), 14th Biennial Conference, Bloemfontein, Post-conference tour 5-8 July 1996. Bloemfontein: National Museum.

DREYER, J. 2000. Mountains and Rivers of the Free State - Manual for field research / Berge en Riviere van die Vrystaat – Handleiding vir veldnavorsing. Bloemfontein: University of the Free State, Department of Anthropology, Occasional Paper No. 2.

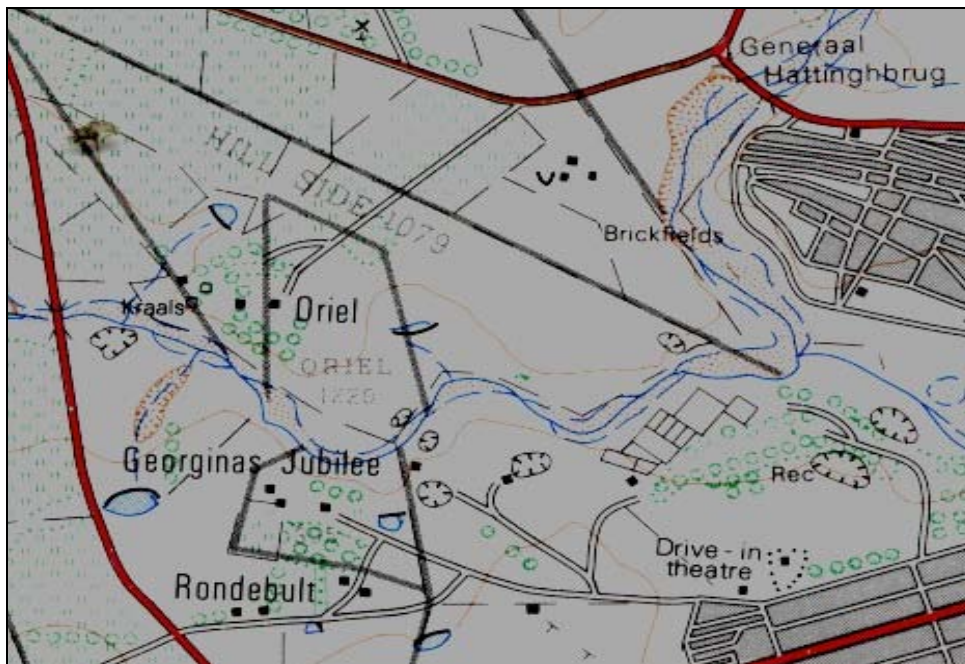
HUMPHREYS, A.J.B. 1986. Searching for the past. Cape Town: David Philip.

HUMPHREYS, A.J.B. 1991. On the distribution and dating of bifacial tanged and barbed arrowheads in the interior of South Africa. South African Archaeological Bulletin 153 (41-43).

MAGGS, T.M. 1976. Iron Age Communities of the Southern Highveld. Pietermaritzburg: Natal Museum.

PISTORIUS, J.C.C. 1994. Eskom Archaeological Site Identification Guide. Johannesburg: Eskom.

SURVEYOR-GENERAL O.F.S. 1973. Index of Orange Free State Farms. Bloemfontein.



Map 1 Locality of the farm Oriel 1220 near Senekal (2827BC).

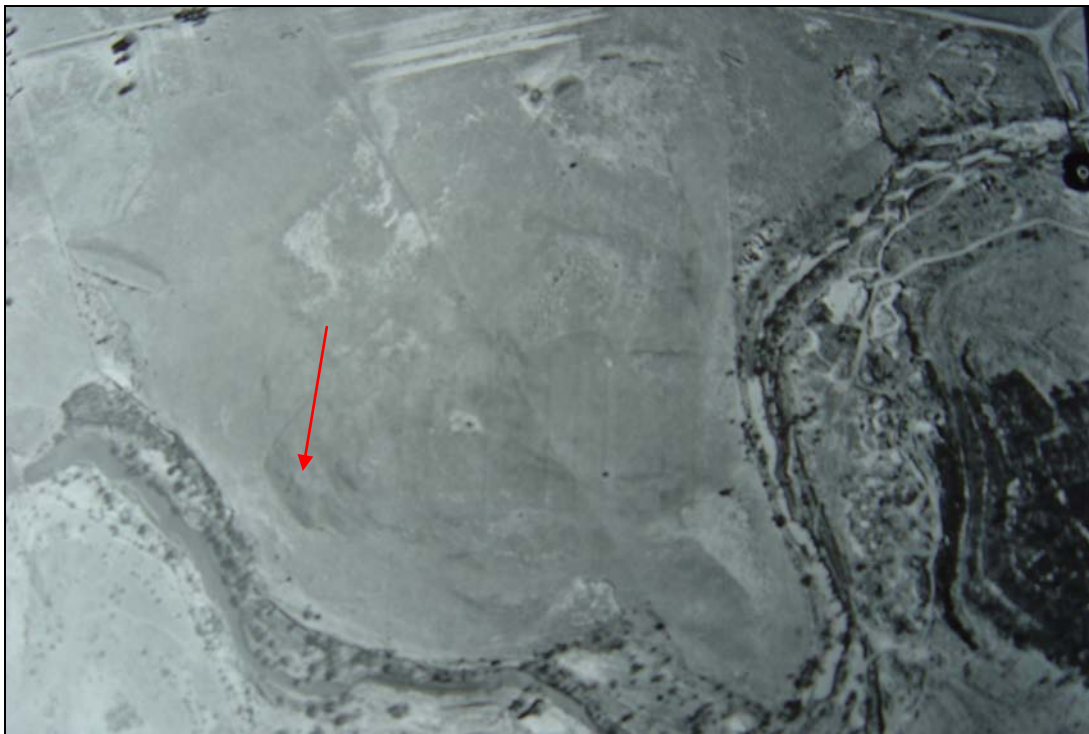


Fig.1 A low-level aerial photograph showing the position of the proposed borrow pit on Oriel 1220, Senekal.



Map 2 Locality of the farm Zyferfontein 246 near Senekal.

LIST OF ILLUSTRATIONS:



Fig.2 View of the proposed site BP 11 on the farm Oriël 1220, Senekal, facing east.



Fig.3 BP 11 on the farm Oriel 1220, Senekal facing north.



Fig.4 BP 11 on the farm Oriel 1220, Senekal facing west.



Fig.5 Microlithic scrapers and flakes from BP 11 at Oriel 1220, Senekal.



Fig.6 Microlithic scrapers and flakes and Dadoxylon fossils from BP 11 at Oriel 1220, Senekal.



Fig.7 Dadoxylon fossils from BP 11 at Oriel 1220, Senekal



Fig.8 Remains of a stone wall on top of the hill at Oriel 1220, Senekal.



Fig.9 BP 12 at Zyferfontein 246 Senekal.



Fig.10 View across BP 12 at Zyferfontein 246 Senekal.



Fig.11 View from BP12 on Zyferfontein Senekal. Cyferfontein Dam at the back.



Fig.12 Remains of a stone wall near BP12 on Zyferfontein Senekal.