



COBUS DREYER

Pr. Archaeologist/Heritage Specialist

**P.O. Box 12910
BRANDHOF 9324
Bloemfontein
dreyerj@telkomsa.net**

**Tel: 051-444 1187
Fax: 051-444 4395
Cell: 083 357 7982**

14 April 2008

ARCHAEOLOGICAL AND CULTURAL HERITAGE ASSESSMENT OF THE PROPOSED POULTRY FARM AT ROODEKRAAL 474, SENEKAL, FREE STATE

EXECUTIVE SUMMARY

The proposed poultry farm will be developed at Roodekraal 474, Senekal, Free State.

The area earmarked for development contains old plough lands.

A cluster of about fifteen graves is situated on the land adjacent to the proposed area of development, and will not be affected.

No other cultural or historical material could be found on the site.

I recommend that further planning and development of the site could continue.

INTRODUCTION AND DESCRIPTION

INVESTIGATION

The site for the proposed developments of a poultry farm at Roodekraal 474, Senekal, was visited on 28 March 2008 in the company of Dr Johan du Preez of MDA Environmental Consultants, Bloemfontein.

At the farm we were interviewed by Mr Gert Heyns, the owner, and his son.

The area was examined for possible archaeological and historical material and to establish the potential impact on any cultural material that might be found. The Heritage Impact Assessment (HIA) is done in terms of the National Heritage Resources Act (NHRA), (25 of 1999) and under the Environmental Conservation Act, (73 of 1989).

LOCALITY

The farm Roodekraal 474, (Surveyor-General 1973) is located in the district of Senekal (Map 2). along the R720 road to Steynsrust (Map 1).

The proposed developments are planned to cover a portion of the farm. This area used to be plough lands (Figs.1&2).

The following GPS coordinates (Cape scale) were taken (2827BA). Coordinate points were taken at random to indicate the extent of the proposed area.

A 28°06'18"S 027°39'50"E Altitude 1532m (Fig.1).

B 28°06'14"S 027°39'50"E Altitude 1542m (Fig.2).

Graves (±15) 28°06'17"S 027°39'49"E Altitude 1543m (Figs.3-11).

RESULTS

FINDS

The area earmarked for developments at Roodekraal 474, Senekal, contains old plough lands and did not produce any archaeological, cultural or historical material.

A cluster of about fifteen graves is situated on the land adjacent to the proposed area of development, and will not be affected.

ASSESSMENT OF IMPACT

The development of installations for chicken farming will not have any impact on the cultural or historical heritage of the land or the area.

RECOMMENDATIONS

I recommend that proposed developments at the farm Roodekraal 474, Senekal may proceed.

MITIGATION

Concerning the area for the proposed developments, no mitigation measures will be required.

No obvious reasons could be found to delay the commencement of further planning and development of the site.

I recommended that the proposed developments may proceed.

ACKNOWLEDGEMENTS

I thank Dr Johan du Preez of MDA Environmental Consultants, Bloemfontein, for taking me to the site.

SELECT BIBLIOGRAPHY:

DEACON, J. 1992. Archaeology for Planners, Developers and Local Authorities. Cape Town: National Monuments Council.

DREYER, J. 1996. Introduction to Free State Iron Age Archaeology. In: Guide to archaeological sites in the Free State and Lesotho. Southern African Association of Archaeologists (SA3), 14th Biennial Conference, Bloemfontein, Post-conference tour 5-8 July 1996. Bloemfontein: National Museum.

DREYER, J. 2000. Mountains and Rivers of the Free State - Manual for field research / Berge en Riviere van die Vrystaat – Handleiding vir veldnavorsing. Bloemfontein: University of the Free State, Department of Anthropology, Occasional Paper No. 2.

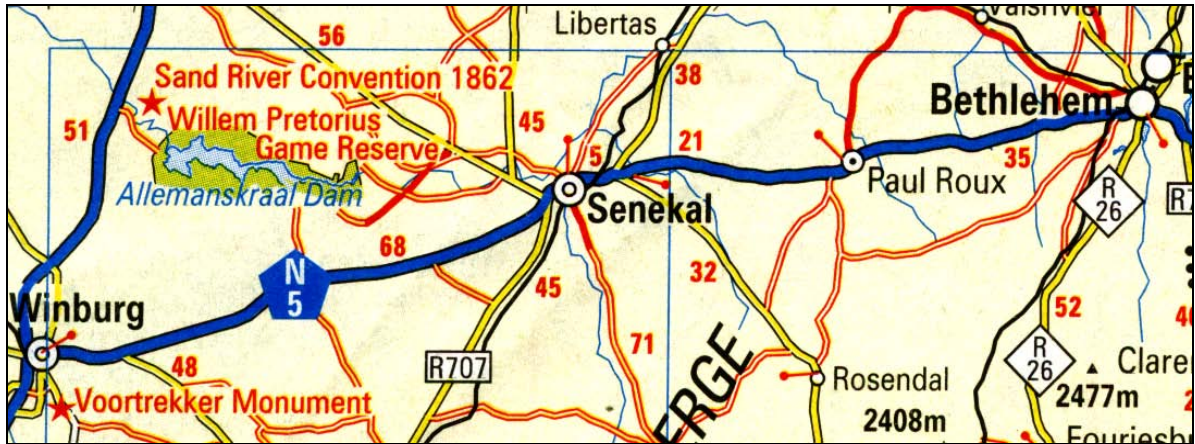
HUMPHREYS, A.J.B. 1986. Searching for the past. Cape Town: David Philip.

MAGGS, T.M. 1976. Iron Age Communities of the Southern Highveld. Pietermaritzburg: Natal Museum.

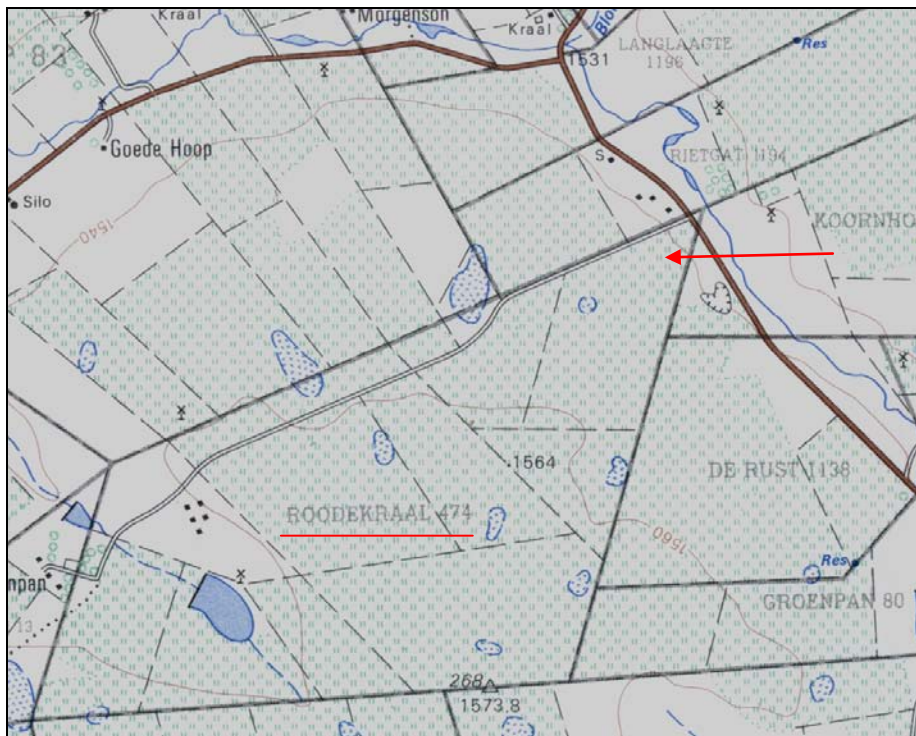
PISTORIUS, J.C.C. 1994. Eskom Archaeological Site Identification Guide. Johannesburg: Eskom.

SURVEYOR-GENERAL O.F.S. 1973. Index of Orange Free State Farms. Bloemfontein.

LIST OF ILLUSTRATIONS:



Map 1 Locality of Senekal in relation to Winburg, Rosendal and Bethlehem.



Map 2 Locality of the proposed developments at Roodekraal 474, Senekal (2827BA).



Fig.1 Point A at Roodekraal 474, Senekal facing west. Red arrow indicates position of graves.



Fig.2 Point B at Roodekraal 474, Senekal facing east. Red arrow indicates position of graves.



Fig.3 A cemetery containing about 15 graves were found at Roodekraal 474, Senekal.



Fig.4 Grave with head stone at Roodekraal 474, Senekal.



Fig.5 Grave of Mamofala Flora Radebe at Roodekraal 474, Senekal.



Fig.6 Grave at Roodekraal 474, Senekal.



Fig.7 Grave of Thole Radebe at Roodekraal 474, Senekal.



Fig.8 Grave of Anna Mohapi at Roodekraal 474, Senekal.



Fig.9 Stone covered grave at Roodekraal 474, Senekal.



Fig.10 Headstone of grave at Roodekraal 474, Senekal.



Fig.11 Another headstone of grave at Roodekraal 474, Senekal.