



**COBUS DREYER**

**Pr. Archaeologist/Heritage Specialist**

**P.O. Box 12910  
BRANDHOF 9324  
Bloemfontein  
dreyerj@telkomsa.net**

**Tel: 051-444 1187  
Fax: 051-444 4395  
Cell: 083 357 7982**

21 APRIL 2006

**FIRST PHASE ARCHAEOLOGICAL AND CULTURAL HERITAGE  
ASSESSMENT OF THE PROPOSED RESIDENTIAL  
DEVELOPMENTS IN THE MADIKHETLA TOWNSHIP,  
TROMPSBURG, FREE STATE**

**EXECUTIVE SUMMARY**

The new proposed residential developments are planned in the Madikhetla Township at Trompsburg, Free State.

No archaeological and cultural remains were found in the proposed area of development.

The proposed developments and planning of the site may proceed.

**INTRODUCTION AND DESCRIPTION**

**INVESTIGATION**

The site for the proposed residential developments in the Madikhetla Township at Trompsburg was visited on 20 October 2005. Mr Piet de Bie from Phethogo Consultants, Bloemfontein, gave indications to the site.

The area was examined for possible archaeological and historical material and to establish the potential impact on any cultural material that might be found. The Heritage Impact Assessment (HIA) is done in terms of the National Heritage Resources Act (NHRA), (25 of 1999) and under the Environmental Conservation Act, (73 of 1989).

## LOCALITY

The proposed residential developments are planned in the Madikhetla Township at Trompsburg, Free State (Map 2).

Trompsburg is located along the N1 main road from Bloemfontein to Colesberg (Map 1).

The area around the existing township of Madikhelta is severely damaged and littered with household debris.

The following GPS coordinates (Cape scale) were taken (Surveyor-General 1973):

Beacon	30°01'48"S 025°46'43"E	Altitude 1432m (Figs.1-3).
Madikhetla Rd	30°01'41"S 025°46'48"E	Altitude 1430m (Fig.4).
Community Centre	30°01'38"S 025°46'47"E	Altitude 1437m (Fig.5).
Bore hole	30°01'39"S 025°46'47"E	Altitude 1432m (Fig.6).
Old foundations	30°01'39"S 025°46'43"E	Altitude 1425m (Fig.7).
Sport stadium	30°01'40"S 025°46'41"E	Altitude 1423m (Fig.8).
Rubble & Aloe plants	30°01'43"S 025°46'37"E	Altitude 1418m (Fig.9).
Concrete structure	30°01'48"S 025°46'31"E	Altitude 1426m (Fig.10).
Old house	30°01'50"S 025°46'30"E	Altitude 1422m (Fig.10).
Roads Dept	30°01'51"S 025°46'25"E	Altitude 1421m (Fig.11).
Sewer	30°01'49"S 025°46'23"E	Altitude 1423m (Fig.11).
Traffic Dept	30°01'48"S 025°46'14"E	Altitude 1425m (Fig.12).

## RESULTS

No indication of any archaeological or historical material was found in the proposed development area. The indications brick-walled structures are in such a rundown state that there is nothing to preserve.

**IMPACT ASSESSMENT**

The proposed residential developments at Madikhetla at Trompsburg will have no impact on any archaeological or cultural heritage remains in the area.

**RECOMMENDATIONS**

No obvious reasons could be found to delay the commencement of further planning and development of the site and I recommend that the proposed residential developments at Madikhetla at Trompsburg should proceed.

**MITIGATION**

Concerning the area for the proposed developments, no mitigation measures will be required.

**ACKNOWLEDGEMENTS**

I thank Me Piet de Bie of Phethogo Consulting, Bloemfontein, for involving me in the project.

**SELECT BIBLIOGRAPHY:**

DEACON, J. 1992. Archaeology for Planners, Developers and Local Authorities. Cape Town: National Monuments Council.

DREYER, J. 1996. Introduction to Free State Iron Age Archaeology. In: Guide to archaeological sites in the Free State and Lesotho. Southern African Association of Archaeologists (SA3), 14th Biennial Conference, Bloemfontein, Post-conference tour 5-8 July 1996. Bloemfontein: National Museum.

DREYER, J. 2000. Mountains and Rivers of the Free State - Manual for field research / Berge en Riviere van die Vrystaat – Handleiding vir veldnavorsing. Bloemfontein: University of the Free State, Department of Anthropology, Occasional Paper No. 2.

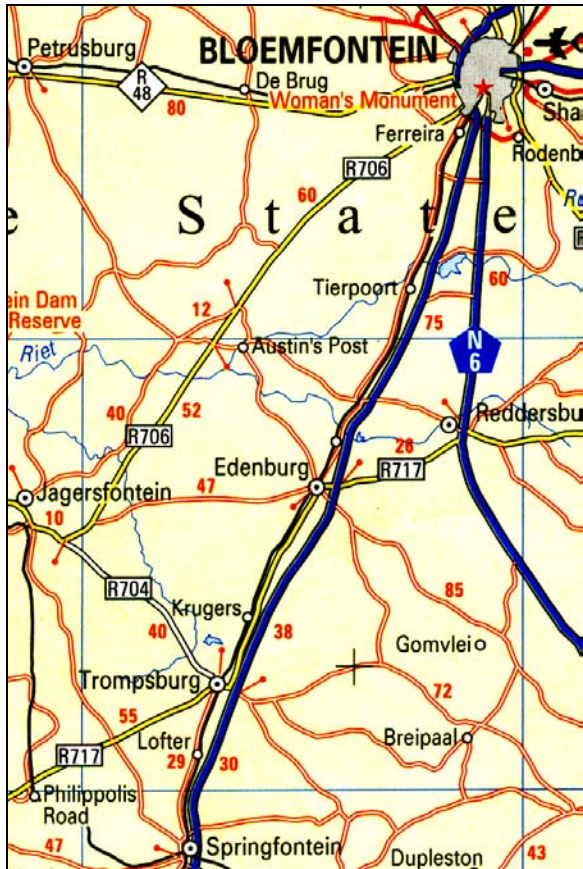
HUMPHREYS, A.J.B. 1986. Searching for the past. Cape Town: David Philip.

MAGGS, T.M. 1976. Iron Age Communities of the Southern Highveld. Pietermaritzburg: Natal Museum.

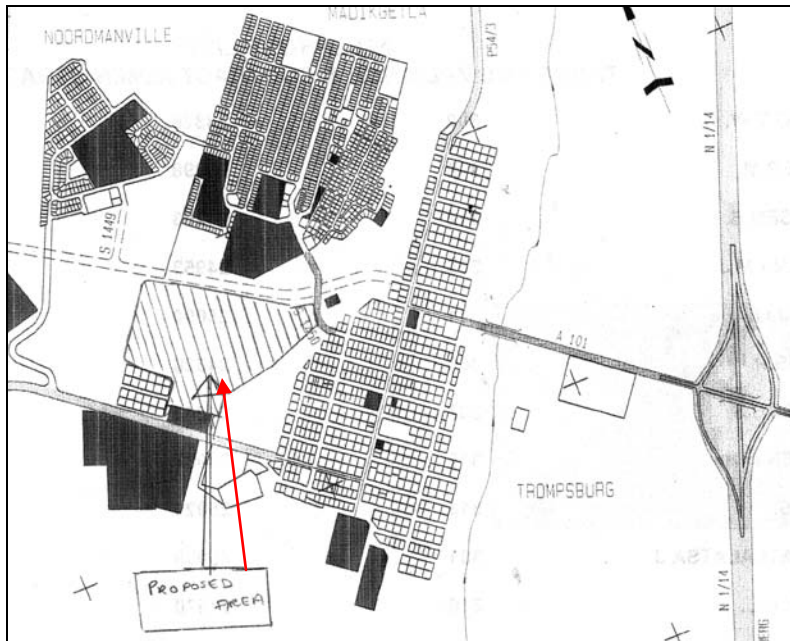
PISTORIUS, J.C.C. 1994. Eskom Archaeological Site Identification Guide. Johannesburg: Eskom.

SURVEYOR-GENERAL O.F.S. 1973. Index of Orange Free State Farms. Bloemfontein.

## LIST OF ILLUSTRATIONS



Map 1 Locality of Trompsburg in relation to Edenburg, Jagersfontein and Springfontein.



Map 2 Locality of the proposed residential developments at Madikhetla, Trompsburg.



Fig.1 View along the hill facing north. Trompsburg is on the right and Madikhetla lies to the left.



Fig.2 General view from the trig-beacon towards the sport stadium.



Fig.3 Facing south from the beacon towards the Trompsburg - Philippolis Road.



Fig.4 Road into Madikhetla with the Community Centre on the left.



Fig.5 The Community Centre at the entrance to Madikhetla Township.



Fig.6 Bore hole near the community centre at the entrance of the township.





Fig.7 Remains of old houses in the area of development.



Fig.8 View along the wall of the sport stadium.



Fig.9 A rubble dump and aloe (garingboom) plants.



Fig.10 Concrete foundation and old house. Facing towards the Philippolis road



Fig.11 Depot of the Provincial Roads Department.  
Leaking sewer pipe in the foreground.



Fig.12 General view of the proposed area from the Philippolis road towards Madikhetla township. Provincial Traffic Department across the road.