



COBUS DREYER

Pr.Archaeologist/Heritage Specialist

**P.O. Box 12910
BRANDHOF 9324
Bloemfontein
dreyerj@telkomsa.net**

**Tel: 051-444 1187
Fax: 051-444 4395
Cell: 083 357 7982**

28 August 2006

**FIRST PHASE ARCHAEOLOGICAL AND CULTURAL HERITAGE
ASSESSMENT OF THE PHASE II RESIDENTIAL
DEVELOPMENTS OF WOODLAND HILLS WILDLIFE ESTATE,
HILLANDALE 2960 (249), BLOEMFONTEIN**

EXECUTIVE SUMMARY

Phase II of the Woodland Hills Wildlife Estate is planned on the farm Hillandale 2960 (249), Bloemfontein.

The proposed developments will be partly against the slope of the hill and against the east and north facing foot.

The area below the hill seems to be without any archaeological and cultural or historical remains. Remnants of circular stone-walled structures on top of the hill could possibly be sangars dating from the Anglo-Boer War and subsequent British occupation of Bloemfontein. The British camp on Fisher's farm had been known and Anglo-Boer War experts assume that there would have been guard posts on the surrounding hills. Condensed milk cans which had been part of the British rations, found at Hillandale, confirm British presence in the immediate area. The discovery of two 1928 Lee Metford cartridge cases in association with the sangars on the hill could also indicate military activities by the Union Defence Force to the north and north west of Bloemfontein.

I recommend that the proposed developments and planning of the site may proceed, provided and on condition that the stone walls should be avoided and that the removal or disturbance of the stones from the walls should be prohibited.

INTRODUCTION AND DESCRIPTION

INVESTIGATION

Phase II of the Woodland Hills Wildlife Estate is planned on a portion of the farm Hillandale 2960 (249) to the north west of Bloemfontein (Map 2). The site was

visited on 22 June 2006 in the company of staff members of MDA Environmental Consultants, Bloemfontein.

The area was examined for possible archaeological and historical material and to establish the potential impact on any cultural material that might be found. The Heritage Impact Assessment (HIA) is done in terms of the National Heritage Resources Act (NHRA), (25 of 1999) and under the Environmental Conservation Act, (73 of 1989).

LOCALITY

The proposed Phase II of the Woodland Hills Wildlife Estate is planned on the Remainder of the farm Hillandale 2960 (249), Bloemfontein (Surveyor-General O.F.S. 1973). The land lies against the hill overlooking the western sewerage plant to the north west of Bloemfontein (Map 1).

The following GPS coordinates (Cape scale) were taken:

Foot of Hill	29°02'49"S 026°12'05"E	Altitude 1382m (Fig.1).
Stone Wall Boven Tempe	29°03'03"S 026°12'20"E	Altitude 1371m (Fig.4).
Stone Circle Hill	29°02'03"S 026°12'02"E	Altitude 1444m (Fig.5).
Pathway	29°03'01"S 026°12'00"E	Altitude 1431m (Figs.10&11).
Stone Circle Erf 144	29°02'55"S 026°12'03"E	Altitude 1423m (Figs.8&9).
Sewer plant	29°02'47"S 026°12'08"E	Altitude 1376m.

RESULTS

FINDS

The remains of circular stone-walled structures were discovered on top of the hill (Fig.5), where at least one of these features shows a double outside wall (Fig.8) and an intricate entrance arrangement (Fig.9).

Another feature contained a double row of stones forming a pathway leading down the slope away from the stone walls (Figs.10&11).

A stone wall (Fig.4) that runs along the ridge on the border between the farm Boven Tempe and Hillandale, is possibly part of the same feature that continues

towards the National Botanical Gardens (29°03'03"S 026°12'21"E Altitude 1385m). An elaborate stonewall continues for several kilometres along the ridge (Fig.4). The origin of this wall is unknown, but resembles other similar features elsewhere in the Free State and also in the Eastern and Northern Cape Province. It is known that in some cases these walls date from times before the Anglo-Boer War (1899-1902).

Two condensed milk cans (Figs.12&13) which had been part of the British rations, were found at the foot of the hill.

A single fired and another unfired ,303 blank Lee Metford cartridge with head stamps inscribed K28, Mk VII (Fig.14) were found in association with the stone walls on the hill.

HISTORICAL BACKGROUND

The farm Hillandale 249 outside Bloemfontein, had been the property of Abraham Fischer and is therefore of historical significance. The name Woodlands, probably originated as the designation of the Fisher house on the farm (Schoeman 1980:125,143). According to Schoeman (1980) it had been fashion in those days to give names to certain residences.

It is also known that there had been a British camp on Fisher's farm during the Anglo-Boer War and historians accept that there would have been guard posts on the surrounding hills.

Remnants of circular stone-walled structures on top of the hill could possibly be sangars dating from the Anglo-Boer War and subsequent British occupation of Bloemfontein. These structures had double walls in some places.

Condensed milk cans which had been part of the British rations, found at Hillandale, confirm British presence in the immediate area. The discovery of two 1928 Lee Metford cartridge cases in association with the sangars on the hill could also indicate military activities by the Union Defence Force to the north and north west of Bloemfontein.

It was also accepted by the planners that the koppie will be left out of the proposed developments.

IMPACT ASSESSMENT

The proposed residential developments on Hillandale as Phase II of the Woodland Hills Wildlife Estate will have a serious effect on the stone-walled remains on the hill.

The farmhouse at Woodlands is also of historical significance. It has been mentioned that is anticipated that this building is going to be used as a guesthouse. Considering that the building is older than 60 years and of high historical significance an arrangement will certainly need the attention and confirmation by the South African Heritage Resources Agency (SAHRA).

The stone wall on the border between the farm Boven Tempe and Hillandale, should likewise be kept out of the present project and should not be removed or damaged during the construction or building phases.

RECOMMENDATIONS

Concerning the residential developments on the hill, I recommend that the proposed developments and planning of the site may proceed, provided and on condition that the stone walls should be avoided and that the removal or disturbance of the stones from the walls should be prohibited.

In the case of the stone wall on the ridge I recommend that the total wall should be kept outside the confinements of the present development.

MITIGATION

Concerning the areas for the proposed developments, mitigation measures will be required in case of the stone walls and sangars on the hill.

In the case of the farm house I strongly recommend that the developers should enter into negotiations with the Free State Provincial Heritage Resources authority, before any renovation work is performed.

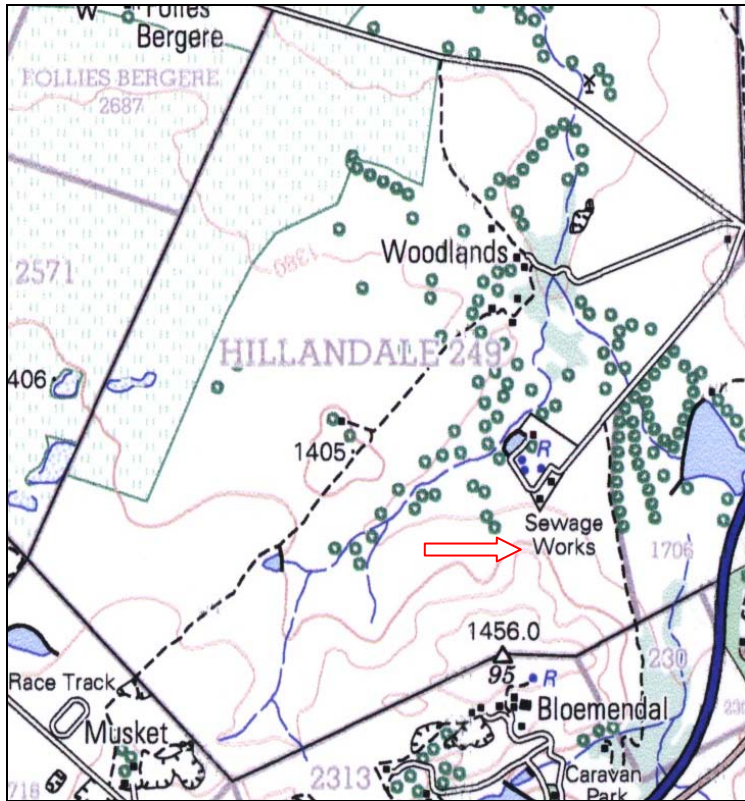
ACKNOWLEDGEMENTS

I thank the officials from MDA Environmental Consultants, Bloemfontein, for taking me to the site.

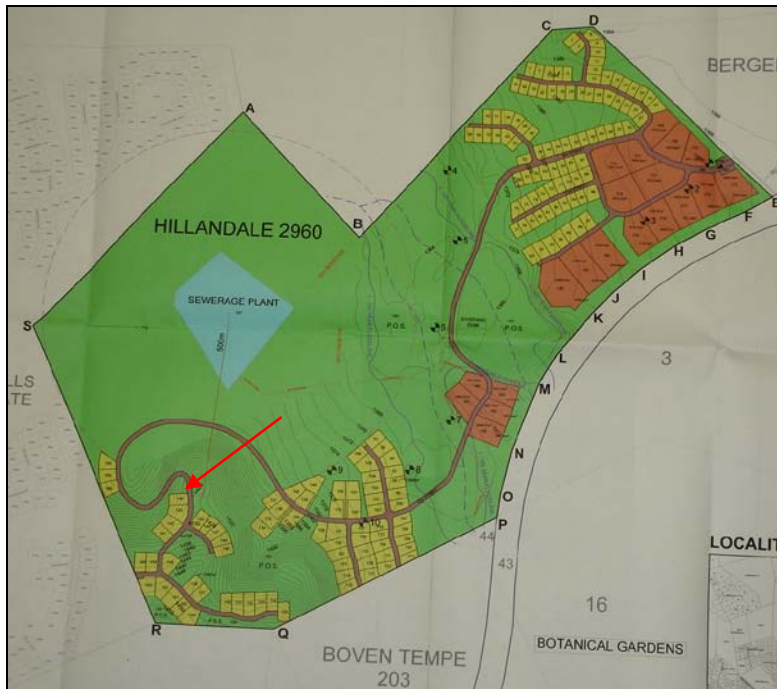
SELECT BIBLIOGRAPHY:

- BESTER, R. et al. 2003. Small Arms of the Anglo-Boer War 1899-1902. Brandfort: Kraal Publishers.
- CLOETE, P.G. 2000. The Anglo-Boer War: - a chronology. Pretoria: JP van der Walt.
- DEACON, J. 1992. Archaeology for Planners, Developers and Local Authorities. Cape Town: National Monuments Council.
- DREYER, J. 2000. Mountains and Rivers of the Free State - Manual for field research / Berge en Riviere van die Vrystaat – Handleiding vir veldnavorsing. Bloemfontein: University of the Free State, Department of Anthropology, Occasional Paper No. 2.
- DREYER, C. 28.7.2004. Archaeological and historical investigation of the proposed developments at subdivisions 20 & 24 of the farm Lilyvale 2313, Bloemfontein. Bloemfontein: Cebo Environmental Consultants (Unpublished report).
- DREYER, C. 16.8.2004. EIA Report on the archaeological and historical investigation of the proposed Rayton Estate Township, on subdivision 29 of the farm Lilyvale 2913, Bloemfontein. Bloemfontein: Spatial Solutions (Unpublished report).
- DREYER, C. 25.11.2004. Archaeological and historical investigation of the proposed developments at the remainder of the farm Boven Tempe 203, Bloemfontein. Bloemfontein: Cebo Environmental Consultants (Unpublished report).
- HENDERSON, Z. 2004. Report on the archaeological survey of Subdivision 7, Remainder and Portion of Subdivision 25, of the farm Lilyvale 2313, Bloemfontein. Bloemfontein: National Museum (Unpublished report).
- HUMPHREYS, A.J.B. 1986. Searching for the past. Cape Town: David Philip.
- HOGG, I.V. 1982. The Cartridge Guide. The Small Arms Ammunition Identification Manual. London: Arms & Armour Press. pp. 192.
- JONES, H.M. & M.G.M. JONES, 1999. A gazetteer of the second Anglo-Boer War (1899-1902). Buckinghamshire: The Military Press.
- MAGGS, T.M. 1976. Iron Age Communities of the Southern Highveld. Pietermaritzburg: Natal Museum.
- PAKENHAM, T. 1997. The Boer War. Johannesburg: Jonathan Ball.
- PISTORIUS, J.C.C. 1994. Eskom Archaeological Site Identification Guide. Johannesburg: Eskom.
- SCHOEMAN, K. 1980. Bloemfontein – die ontstaan van 'n stad. Kaapstad: Human & Rousseau.
- SURVEYOR-GENERAL O.F.S. 1973. Index of Orange Free State Farms. Bloemfontein.
- WAR OFFICE. 1915. Treatise on Ammunition. London: His Majesty's Stationary Office. 10th Edition pp.592.

LIST OF ILLUSTRATIONS:



Map 1 Locality of Hillandale 249, Bloemfontein (2926AA). Arrow indicates the position of the sangars on the hill. Note the locality of the sewerage plant.



Map 2 Plan layout of Woodland Hills Wildlife Estate. Stone-walled sangar on Stand 144 indicated by red arrow.



Fig.1 The hills to the north overlooking the sewerage plant.



Fig.2 View of the proposed site at the foot of the hill (Lion).



Fig.3 The site at the foot of the hill facing north (Sable2).



Fig.4 Old stone-wall on the border between farms Hillandale and Boven Tempe.



Fig.5 Circular stone-walled structure on the hill.



Fig.6 View of the site along the foot of the hill (Sable 1).



Fig.7 The border fence facing south.



Fig.8 The stone-walled sangar on the hill.



Fig.9 Entrance to the sangar.



Fig.10 Double row of stones forming pathway from the sangar down the western slope.



Fig.11 End of the double row of stones running down from the sangar.



Fig.12 Milk can with heavy soldering typical of British rations during the Anglo-Boer War.



Fig.13 Milk can with soldering dating from the Anglo-Boer War (1899-1902).



Fig.14 Unfired and fired ,303 blank cartridges with head stamps inscribed K28, Mk VII.