

4-2-409-0024-20030423-1CRM

Archaeological Survey for the  
Cathkin peak, Driefontein  
Development

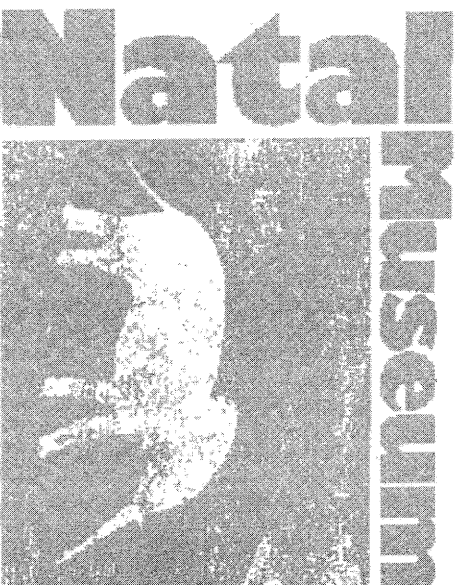
For Harlequin Duck Properties (Pty) Ltd.

By

By Gavin Anderson

Institute for Cultural Resource Management, Natal Museum, Private Bag 9070,  
Pietermaritzburg, 3200

23 April 2003



Harlequin Duck Properties (Pty) Ltd. contracted the Institute for Cultural Resource Management to undertake an archaeological survey of the Farm Driefontein in the Cathkin Peak area. The development area is for a few chalets.

The affected area was under dense grassland vegetation resulting in poor archaeological visibility. Most of the development node is on gentle slopes.

We surveyed along pathways and vehicle tracks, as well as areas of semi-sparse vegetation. No archaeological material was observed in the development area. This is uncommon, as one would expect to find some Late Stone Age stone tools.

Outside of the development area, and in the adjacent river valley area, however, three recorded rock art sites. These are 2929AB18; 2929AB19; 2929AB20 (also known as Dingaan's Cave). These sites have been previously (re-)recorded over the last few decades (see Natal Museum archives). An existing path leads from the tar road further uphill from the house to Dingaan's Cave.

The rock art sites are of high archaeological significance and archaeological sensitivity. The development should not encourage unnecessary or frequent visitations by people to these caves unless a full management plan has been approved by Kwazulu-Natal Heritage. Dingaan's Cave has been previously graffitied, and has an archaeological deposit. An uncontrolled increase in the numbers of people to this cave would thus have a negative effect on the site(s).