



NATIONAL MONUMENTS COUNCIL  
RAAD VIR NASIONALE GEDENKWAARDIGHEDE

PROFESSIONAL AND TECHNICAL SECTION  
VAKKUNDIGE EN TEGNIESE AFDELING



McGregor

A SURVEY OF BUILDINGS IN  
'N OPNAME VAN GEBOUE IN

McGREGOR

1986

May .. SUBMCA  
Acc. : . 250/91  
Dew.No.  
\* 720.968733 PIS



INHOUD  
CONTENTS

PAGE

VOORWOORD/FOREWORD

Mr G.S. Hofmeyr, Director, National Monuments Council I

INLEIDING/INTRODUCTION

1. 'n Kort Geskiedenis  
A Brief History II
2. Die Opname  
The Survey II
3. Klassifikasie van Geboue  
Classification of Buildings III
4. Huidige Bewaringswetgewing  
Current Conservation Legislation III
5. Metodes om Bewaring te Bevorder  
Action Required to Achieve Conservation IV
6. 'n Stelsel van Omgewingskontrolle  
A System of Environmental Control V
7. Beweegredes om Bewaring te Bevorder  
Incentives to Encourage Conservation VI
8. Aanbevelings  
Recommendation VI
9. Bedankings  
Acknowledgements VI
10. Kaart: Klassifikasie van Geboue  
Map: Classification of Buildings VII

THE SURVEY

11. Block Diagram 1
12. An Annotated Survey of Buildings in McGregor 2
13. Block Index 159

## FOREWORD

The National Monuments Council has to date compiled a number of surveys of significant buildings in historical cities and towns in South Africa, to assist local authorities in the formation of a conservation policy for their areas.

The National Monuments Act was amended in 1986 and the National Monuments Council, in consultation with local authorities, may now compile a register of conservation-worthy properties in South Africa, and declare conservation areas. The publication of a survey is the first step in identifying such sites and areas, and is a valuable tool in conservation management.

Provincial requirements now make it necessary for local authorities to prepare structure plans for the areas under their control. These are basic planning documents in which the conservation of buildings and areas of special historical and architectural significance features to a greater or lesser extent. This survey will assist the Municipality of McGregor in the preparation of a structure plan when, in due course, this is done.

McGregor is a unique town with a remarkable concentration of vernacular architecture, and the whole village is significant in terms of its setting, environment, and historical and architectural interest. It has immense potential for conservation. My staff and I look forward to working with the Municipality of McGregor in the implementation of the recommendations in this survey, and in future conservation matters.

---

Mr G.S. Hofmeyr  
DIRECTOR  
NATIONAL MONUMENTS COUNCIL  
September 1987.

## 1. 'N KORT GESKIEDENIS

McGregor is 'n klein dorpie, geleë teen die voorheuwels van die Riviersonderendberge in die Robertson distrik. Dit is in 1861 gestig en is oorspronklik vernoem na Lady Grey, die eggenote van Sir George Grey, goewerneur aan die Kaap van 1854-1861.

Die dorpie is in 1903 hernoem na eerwaarde Andrew McGregor, die Nederduitse Gereformeerde predikant van Robertson vanaf 1862 tot 1903. McGregor was deel van sy gemeente tot en met 1903, toe 'n nuwe gemeente gestig is.

'n Dorpsbeheerraad is in 1894 gestig en in 1907 het McGregor munisipale status verkry.

In die vroeë dae van die dorpie, van ongeveer 1800 tot 1900, is daar bamboes plantasies aangeplant. Die bamboes is gebruik om sweepstokke van te maak, wat regdeur Suid-Afrika gebruik is om osse mee aan te dryf. Met die koms van spoor- en motorvoer het die industrie uitgesterf, en is bamboesplantasies deur boorde en groentetuine vervang.

Die pad vanaf Robertson, wat tans deur die dorp loop en in die berge op die kruin van Boesmanskloof eindig, is oorspronklik beplan om na Greyton, en dan na Caledon verleng te word. Dit is nooit voltooi nie, en McGregor het 'n stil, landboukundige, afgesonderde plek gebly.

As gevolg van sy geïsoleerde ligging het McGregor min sedert die Victoriaanse tye verander. Die fokus van die dorp is die toring van die Nederduitse Gereformeerde Kerk, waaromheen die boorde en oorwegend afgewitte rietdakhuise in 'n eweredige rooster patroon versprei is. Talle mooi verbeelde van tipiese Kaapse volksboukundige, Georgiaanse en Victoriaanse huise het behoue gebly, en die landelike omgewing en ewerediger skaal van die dorp is ongerep. Dit is een van die dorpe in die Kaap wat die beste bewaar gebly het.

### Verwysings:

Fransen & Cooke : The Old Buildings of the Cape, A.A. Balkema, Kaapstad, 1980.

D'Arcy Thompson, M. : Forgotten Corners of the Cape, Timmins, Kaapstad, 1981.

Bulpin, T.V. : Discovering South Africa, T.V. Bulpin Uitgewers, Kaapstad, 1980.

## 2. DIE OPNAME

Die opname is onderneem op versoek van die Munisipaliteit van McGregor, en dek alle geboue in die dorp.

Die opname is gedoen in samewerking met die Bewaringseenheid van die Universiteit van Kaapstad, wat goedgunstiglik alle inligting wat gedurende hul vorige opname aan die dorp versamel is, tot ons

## 1. A BRIEF HISTORY

McGregor is a small village in the foothills of the Riviersonderend mountains in the district of Robertson. It was founded in 1861 and was originally named Lady Grey, after the wife of Sir George Grey, governor of the Cape from 1854-1861.

In 1903, the village was renamed after Reverend Andrew McGregor, the Dutch Reformed Minister of Robertson from 1862 to 1903. McGregor was included in his parish until 1903, when a separate congregation was founded.

A village management board was instituted in 1894 and in 1907 McGregor became a municipality.

In the early days of the village, from about 1800 to 1900, plantations of bamboo were planted. The bamboo was used to make whip sticks which were used throughout South Africa for driving ox-teams. With the advent of rail and motor-car transport, the industry died out and orchards and vegetable gardens replaced the bamboo plantations.

The road from Robertson, which presently runs through the town and ends in the mountains at the head of Boesmankloof, was originally planned to continue to Greytown, and thence to Caledon. It was never completed, and McGregor has remained a quiet agricultural backwater.

Because of its isolated position, McGregor has changed little since Victorian times. The focus of the town is the Dutch Reformed Church spire, around which the orchards and predominantly thatched, whitewashed houses are spread in a regular grid pattern. Many fine examples of typical Cape vernacular, Georgian and Victorian houses have survived, and the rural setting and consistent scale of the town are intact. It is one of the best preserved towns in the Cape.

### REFERENCES:

Fransen & Cooke : The Old Buildings of the Cape, AA Balkema, Cape Town, 1980.

D'Arcy Thompson, M.: Forgotten corners of the Cape, Timmins, Cape Town, 1981.

Bulpin, T.V.: Discovering South Africa, T.V. Bulpin Publishers, Cape Town, 1980.

## 2. THE SURVEY

This survey was undertaken at the request of the Municipality of McGregor, and covers all buildings in the town.

The survey was done in consultation with the University of Cape Town's Conservation Unit, which kindly placed all the material collected during it's previous survey of the town at our disposal. The block layout and maps are based on those of the Conservation Unit, and their photographs have also been used. A brief architectural description of the street aspect of each building has been added.

beskikking gestel het. Die blok-uitleg en kaarte is gebaseer op die van die Bewaringseenheid, en hulle foto's is ook gebruik. 'n Kort argitektoniese beskrywing van elke gebou se straataansig is ook ingesluit.

Die opgeneemde area is verdeel in blokke wat elk genommer is (sien blok-uitlegkaart, bl. 1). 'n Meer gedetailleerde kaart van elke blok, waarop die erfnummers en ligging van elke gebou aangedui word, is voorsien. Waar daar meer as een gebou op 'n erf voorkom, word die geboue onderskei deur die letters A, B, C, ens. 'n Gebou kan dus geïdentifiseer word deur sy bloknommer, erfnummer en gebou-letter.

Elke gebou word geïdentifiseer deur middel van 'n foto en 'n kort beskrywing, en is volgens die stelsel hiernaas geklassifiseer.

### 3. KLASSIFIKASIE VAN GEBOUE

Al die geboue in McGregor is ooreenkomstig hul belangrikheid op die meegaande kaart aangedui.

Die terreine van nasionale gedenkwaardighede is met kolle aangedui en hulle is in die teks geïdentifiseer. Geboue met eiesoortige argitektoniese belangrikheid word met 'n swart kol met 'n sirkel daarom op die kaart en in die teks aangedui. Hierdie geboue behoort by die nasionale register van bewarenswaardige eiendomme ingesluit te word. Party van die geboue behoort as nasionale gedenkwaardighede verklaar te word, sou die eienaars daartoe instem.

Geboue wat tot die omgewing bydra word met 'n swart kol aangedui. Baie van hierdie kothuise is onsimpatiek verander, veral deur die vervanging van die oorspronklike vensters met ongepaste horisontaal-gevormde- of staalvensters. Hulle behou egter hul kontekstuele belangrikheid as gevolg van hul skaal, muur- en dakmateriaal, ligging, ens., en behoort as deel van 'n bewaringsgebied beskerm te word. Hopelik sal die eienaars mettertyd meer bewus word van die waarde van hul eiesoortige geboue, en die kothuise volgens die Riglyne vir McGregor laat restoureer.

Ander geboue in die dorp word met 'n oop kol op die kaart aangedui.

### 4. HUIDIGE BEWARINGSWETGEWING

Daar is nou verskeie alternatiewe metodes van bewaring vir bewarenswaardige geboue moontlik. Die RNG bepaal watter soort bewaring die geskikte vir geboue of gebiede sal wees, in terme van hulle belang en ander kriteria.

#### 4.1 Nasionale Gedenkwaardighede

Geboue wat beskou word as van nasionale belang kan, met die toestemming van die eienaars, as nasionale gedenkwaardighede verklaar word. Die verklaring kan die hele erf en 'n stuk grond daaromheen, net die gebou, of slegs 'n gedeelte van die gebou, bv. die vooraansig, insluit. So 'n monument mag nie verander of

The surveyed area is divided into blocks, each of which is numbered (see block layout map, pg. 1). A more detailed map of each block is provided, showing erf numbers and the position of buildings. Where there is more than one building on one erf, each building is designated A, B, C, etc. Thus buildings are identified by the block number, erf number and building letter.

A photograph and short description of each building is provided, and the buildings are classified according to the system below.

### 3. CLASSIFICATION OF BUILDINGS

All of the buildings in McGregor have been marked on the accompanying map, according to their level of significance.

The sites of national monuments are dotted, and they are identified in the text. Buildings which have individual architectural importance are indicated on the map and in the text by a black dot with a circle around it. These buildings should be included in the national register of conservation-worthy property. If the owners consent, certain of them should be proclaimed national monuments.

Buildings which contribute to the environment are indicated by a black dot. Many of these cottages have been unsympathetically altered, especially by the replacement of the original windows with unsuitable horizontally-proportioned or steel windows. However, they retain their contextual importance due to their scale, wall and roof materials, position, etc., and should be protected by their inclusion in conservation areas. It is hoped that as the owners become more aware of the value of their vernacular buildings, the cottages will be restored according to the Guidelines for McGregor.

Other buildings in the town are indicated on the map by an open dot.

### 4. CURRENT CONSERVATION LEGISLATION

There are now several alternative kinds of protection possible for conservation-worthy buildings. The NMC determines which kind of protection is most suitable for particular buildings and areas by assessing their significance in terms of standard criteria.

#### 4.1 National Monuments

Buildings considered to be of national importance can, with the owners consent, be declared national monuments. The declaration can cover the whole erf, the building and a specified amount of surrounding land, the building only, or even a part of a building e.g. the front facade. Such a monument may not be altered or demolished without a permit from the National Monuments Council.

The use of a monument and its immediate surroundings are also controlled by the Council. There are currently 12 national monuments in McGregor.



gesloop word sonder 'n permit van die Raad vir Nasionale Gedenkwaardighede nie. Die gebruik van 'n gedenkwaardigheid en die onmiddellike omgewing daarvan word ook deur die Raad beheer. Daar is op die oomblik 12 nasionale gedenkwaardighede in McGregor.

#### 4.2 Geregistreeerde Geboue

Die Raad vir Nasionale Gedenkwaardighede is nou by magte om 'n register van bewarenswaardige geboue op te stel en dit in die Staatskoerant te laat publiseer. Die register word opgestel in oorleg met die plaaslike bestuur. Die eienaar en plaaslike bestuur moet die RNG raadpleeg in verband met enige beplanning wat 'n geristreeerde gebou kan affekteer. Sulke geboue mag meer van plaaslike-of streeksbelang as van nasionale belang wees.

#### 4.3 Bewaringsgebiede

Die Raad vir Nasionale Gedenkwaardighede kan, in oorleg met die plaaslike owerheid, 'n gebied met 'n hoë konsentrasie van bewarenswaardige geboue as 'n bewaringsgebied verklaar. Dit is moontlik dat die gebied geproklameerde en geregistreeerde geboue, sowel as geboue met min of geen belangrikheid en selfs oop terreine, sal bevat. Nuwe ontwikkeling en veranderings aan bestaande geboue in hierdie gebiede sal onderworpe wees aan spesiale ontwerpkontrole, veral in die geval van skaal, aansig, hoogte, ens.

### 5. METODES OM BEWARING TE BEVORDER

Hierdie lys dien as hulpmiddel om geboue en gebiede in McGregor wat geregtelike beskerming of spesiale beplanningsoorwegings benodig, te identifiseer. Dit moet die basis vorm van samesprekinge tussen die Raad vir Nasionale Gedenkwaardighede en die Munisipaliteit van McGregor.

Die geskiedenis van geboue wat gekeur word as moontlike nasionale gedenkwaardighede moet deeglik nagevors word en die toestemming en goedkeuring van die eienaar moet gekry word voordat enige verslae aan die Raad vir Nasionale Gedenkwaardighede voorgelê word.

Die munisipaliteit, in samewerking met die Raad, sal hierdie opname dan noukeurig ondersoek om sodoende geboue en terreine wat van spesiale historiese, kulturele en estetiese belang is, te identifiseer. Hierdie geboue en terreine sal dan, nadat met die eienaar onderhandel is, ingesluit word in 'n register wat in die Staatskoerant gepubliseer sal word. Groepe geboue en gebiede wat van spesifieke historiese, estetiese of natuurwetenskaplike waarde is, kan dan as bewaringsgebiede geproklameer word.

Hierdie bewaringsmaatreëls moet geïnkorporeer word by die Stadsbeplanningskema van McGregor, aangesien dit sekere beperkings en voorwaardes op die eiendom ter sprake mag hê.

Die Wet maak nou ook voorsiening vir die bewaring van geboue ouer as 50 jaar, en die RNG kan kontrole ten opsigte van die sloping van of veranderings aan sulke geboue uitvoer. Die Raad sal gewoonlik sy betrokkenheid ten opsigte van sulke geboue tot die

#### 4.2 Registered Buildings

The National Monuments Council is now empowered to compile a register of conservation-worthy buildings, to be published in the Government Gazette. The register is compiled in consultation with the local authority. The NMC must be consulted by the owner or local authority in respect of any planning affecting registered buildings.

Such buildings are likely to be of regional or local, rather than national importance.

#### 4.3 Conservation Areas

The National Monuments Council can, in consultation with the local authority, declare an area with a high concentration of conservation-worthy buildings to be a conservation area. It is likely that the area will contain proclaimed and registered buildings as well as buildings of lesser importance, and even open sites. New developments and alterations to existing buildings in the area will be subject to special design controls, especially as far as materials, setbacks, scale, facade treatment, height, etc. are concerned.

### 5. ACTION REQUIRED TO ACHIEVE CONSERVATION

This list will assist in the identification of the buildings and areas in McGregor that require legal protection and special planning consideration. It should form the basis of discussions between the National Monuments Council and the McGregor Municipality.

Buildings selected for possible proclamation as national monuments must be researched and the owners' consent must be obtained before reports are submitted to the National Monuments Council.

The Municipality, in collaboration with the Monuments Council and the McGregor Conservation Trust, should then scrutinize the survey and identify which buildings and sites are of special historical, cultural and aesthetic interest, and should therefore be registered. These buildings and sites should then, after consultation with the owners, be incorporated in a register to be published in the Government Gazette. Groups of such buildings and areas of particular historic, aesthetic or scientific value can then be proclaimed conservation areas and gazetted.

These conservation measures should be incorporated into the Zoning Scheme for McGregor, as they impose certain restrictions and conditions on the properties in question.

The Act now also provides protection for buildings more than 50 years old, and the Monuments Council can control demolition of, and alterations to, all such buildings. The Council will normally limit its concern to such buildings which have been identified in this catalogue as having individual architectural importance, or which the local authority considers to be of some cultural, historical or aesthetic value.

wat in hierdie opname as bewarenswaardig geïdentifiseer is, of wat deur die plaaslike owerheid as van kulturele, historiese of estetiese waarde beskou word, beperk.

## 6. 'N STELSEL VAN OMGEWINGSKONTROLE

Alhoewel die Raad vir Nasionale Gedenkwaardighede wetgewende magte het om geboue en terreine te beskerm, sal dit baie meer effektief wees as bewaring ingelyf kan word by die Stadsbeplanningskema en geadministreer word, waar moontlik, deur die plaaslike owerheid.

### 6.1 McGregor Advieskomitee

'n Advieskomitee, saamgestel uit geïnteresseerde mense en eienaars van bewarenswaardige geboue, kan gevorm word om die munisipaliteit in alle sake rakende bewaring, bv. evaluasie van ou geboue, die definiëring van bewaringsgebiede, historiese navorsing en restaurasie, by te staan.

### 6.2 Ontwerprieglyne

Die publikasie van ontwerprieglyne is van groot hulp in die bestuur van bewaringsgebiede en dit gee ook die publiek raad oor restaurasie van, en gepaste veranderings aan, bewarenswaardige geboue.

Riglyne vir McGregor is alreeds deur 'n spesialis-konsultant van die RNG opgestel. Dit gee 'n kort beskrywing van style en soorte geboue in McGregor en sluit ook restaurasie, veranderings en invul-argitektuur in.

Elemente wat waarskynlik in bewaringsgebiede gekontroleer sal word, sluit onder andere materiale, inspringing, hoogte, skaal, tuinmure, ens. in.

### 6.3 'n Spesiale Goedkeuringsprosedure

Aansoeke om die goedkeuring van veranderings aan geproklameerde of geregistreerde geboue, of enige voorstelle wat bewaringsgebiede raak, moet anders as konvensionele planne benader word.

Sketsplanne of voorstelle moet eers met die munisipaliteit en die Advieskomitee bespreek word en deur die Raad goedgekeur word, voordat gedetailleerde planne geteken word. Werkstekeninge moet dan vir goedkeuring aan die munisipaliteit en die RNG voorgelê word. Die kommentaar en aanbevelings van die Advieskomitee moet alle planne wat vir goedkeuring voorgelê word, vergesel.

Voorstelle wat betrekking het op geboue ouer as 50 jaar wat in die opname geïdentifiseer is as bewarenswaardig, moet aan die munisipaliteit voorgelê word. Die munisipaliteit sal dan, in oorleg met die Advieskomitee, besluit of dit nodig is om die aansoek aan die RNG te stuur of nie.

## 6. SYSTEMS OF ENVIRONMENTAL CONTROL

Although the National Monuments Council has legislative powers to protect buildings and sites, it is preferable for conservation measures also to be incorporated into the Town Planning Scheme and administered, as far as possible, by the local municipality.

### 6.1 McGregor Advisory Committee

An Advisory Committee, composed of interested persons and owners of conservation-worthy buildings, should be established to assist the municipality in all matters affecting conservation: the evaluation of old buildings, the definition of conservation areas, historical research and advice on restoration.

One of the most important functions of the committee will be to review plans and advise the NMC of local opinions (see 6.3 below).

### 6.2 Design Guidelines

The publication of design guidelines assists in the management of conservation areas and will advise the public about restoration of, and appropriate alterations to, conservation-worthy buildings, as well as suitable ways of constructing new buildings in the village.

Guidelines for McGregor have already been compiled by a specialist consultant of the NMC. They give a brief outline of the styles and types of buildings found in McGregor, and cover appropriate restoration, alterations and infill architecture.

### 6.3 A Special Consent Procedure

Applications for approval of alterations to proclaimed or registered buildings and any proposals affecting a conservation area must be treated differently from conventional buildings plans.

Sketch plans or proposals should be discussed with the municipality and Advisory Committee and the NMC before detailed plans are drawn.

Working drawings should then be submitted to the municipality, as well as the National Monuments Council, for approval. The comments and recommendations of the Advisory Committee should accompany all plans sent to the NMC.

Proposals affecting other conservation-worthy buildings on this list which are older than 50 years should be submitted to the municipality, which will decide, in consultation with the Advisory Committee, whether the application needs to be sent to the NMC or not.

## 7. BEWEEGREDES OM BEWARING AAN TE MOEDIG

Die munisipaliteit kan bewaring aanmoedig deur sekere toegewings aan eienaars wat instem om sensitiewe geboue te bewaar, te maak.

### 7.1 Nie-belasbare toegewings

- (i) aanvullende terreindekking;
- (ii) verslapping van bougrense en inspringing;
- (iii) vergunning van kleiner as gebruikelike onderverdeling; en
- (iv) oordrag van regte.

### 7.2 Belastingtoegewings

- (i) korting op eiendoms- of erfbelasting vir geregistreerde geboue;
- (ii) korting op erf- of eiendomsbelasting vir nasionale gedenkwaardighede; en
- (iii) spesifieke korting, toegestaan vir bepaalde tydsperiodes om bewaringsdoelwitte te bereik.

## 8. AANBEVELINGS

- (a) Dit word aanbeveel dat hierdie opname deur die Munisipaliteit van McGregor bestudeer word.
- (b) Inligting vervat in hierdie opname moet aangewend word om belangrike geboue en gebiede wat verklaar, geregistreer, of verklaar as bewaringsgebiede moet word, te identifiseer.
- (c) Bogenoemde geïdentifiseerde geboue en gebiede moet dan met die RNG bespreek word, waarna dit geregistreer of as bewaringsgebied verklaar word in die Staatskoerant.
- (d) By nadere ondersoek, behoort prioriteite toegeken te word, waarvolgens bepaal kan word watter geboue, gebiede of terreine dringende aandag vereis.
- (e) Die Stadsbeplanningskema van McGregor behoort gewysig te word om 'n stelsel van omgewingskontrole en toegewings om bewaring te bevorder, in te sluit.

## 9. BEDANKINGS

Ons bedank graag die Munisipaliteit van McGregor en die Robertson McGregor Trust vir hul samewerking en aanmoediging.

Mev. Japha van die Bewaringseenheid van die Universiteit van Kaapstad het hulp van onskatbare waarde in die veld aan ons verleen, asook deur die Bewaringseenheid se opname tot ons beskikking te stel.

## 7. INCENTIVES TO ENCOURAGE CONSERVATION

The municipality can encourage conservation by granting easements to owners who agree to conserve buildings and sites which have been identified as conservation-worthy. The municipality is under no obligation to grant easements, and should consider each case on its merits.

### 7.1 Non-fiscal Easements

- i) additional site coverage;
- ii) relaxing building lines and set-backs;
- iii) permitting smaller than usual subdivisions;
- iv) transfer of rights.

### 7.2 Fiscal-Easements

- i) rates rebates for all registered buildings;
- ii) rates rebates for national monuments;
- iii) specific rebates, granted for a specified period of time in order to achieve a conservation goal.

## 8. RECOMMENDATIONS

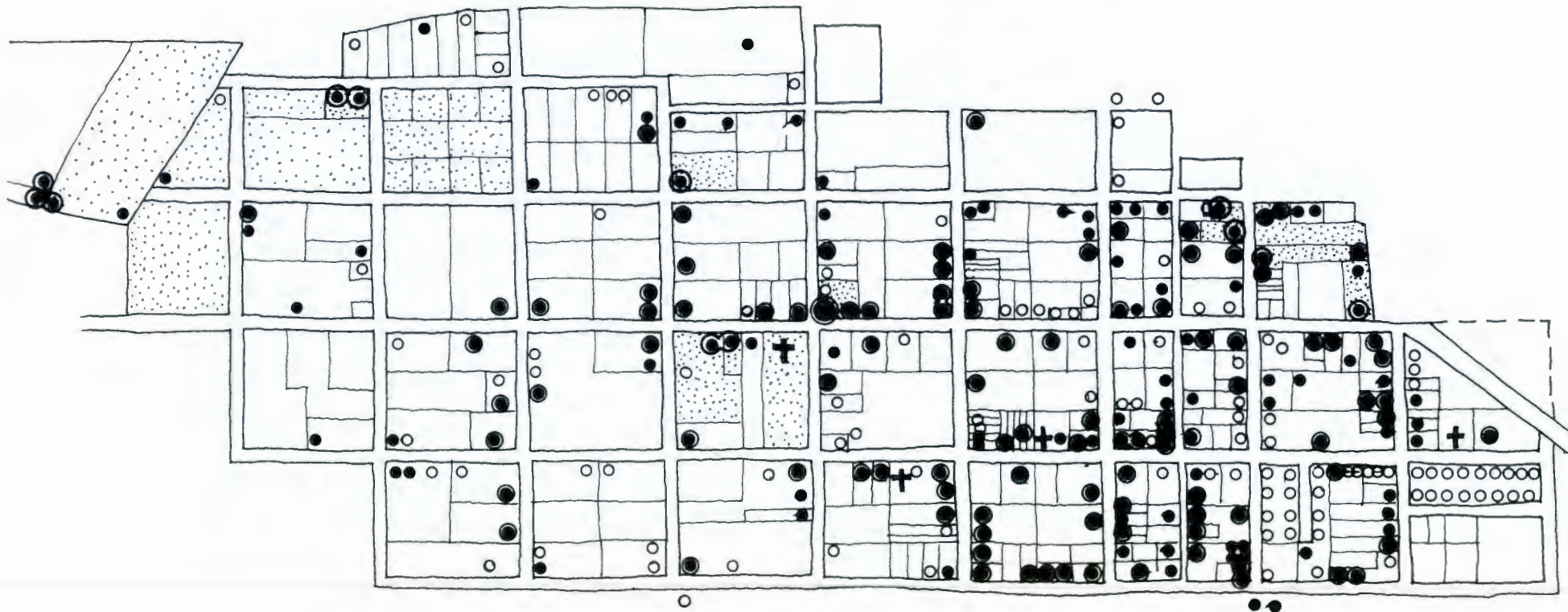
- 8.1 It is recommended that this survey be studied by the Municipality of McGregor.
- 8.2 Information contained in the survey should be used to identify important buildings and areas to be proclaimed, registered or declared conservation areas.
- 8.3 The buildings and areas identified should be discussed with the NMC and registered or designated conservation areas in the Government Gazette.
- 8.4 After further investigation, priorities should be allocated in order to determine which buildings, sites and areas require urgent attention.
- 8.5 The Town Planning Scheme of McGregor should be amended to include a system of environmental control and incentives to encourage conservation.

## 9. ACKNOWLEDGEMENTS

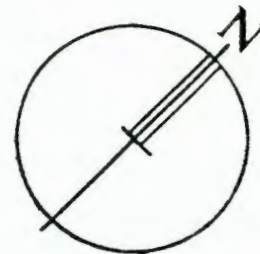
We would like to thank the Municipality of McGregor and the Robertson McGregor Trust for their co-operation and encouragement.

Mrs Japha of the University of Cape Town Conservation Unit gave us invaluable assistance in the field as well as placing the Conservation Unit's survey at our disposal.

- † Church / Kerk
- ▨ National Monument / Nasionale Gedenkwaardigheid
- ⊙ Building of architectural importance  
Gebou met argitektoniese belang
- Building which contributes to the environment  
Gebou wat tot die omgewing bydra
- Other building  
Ander gebou

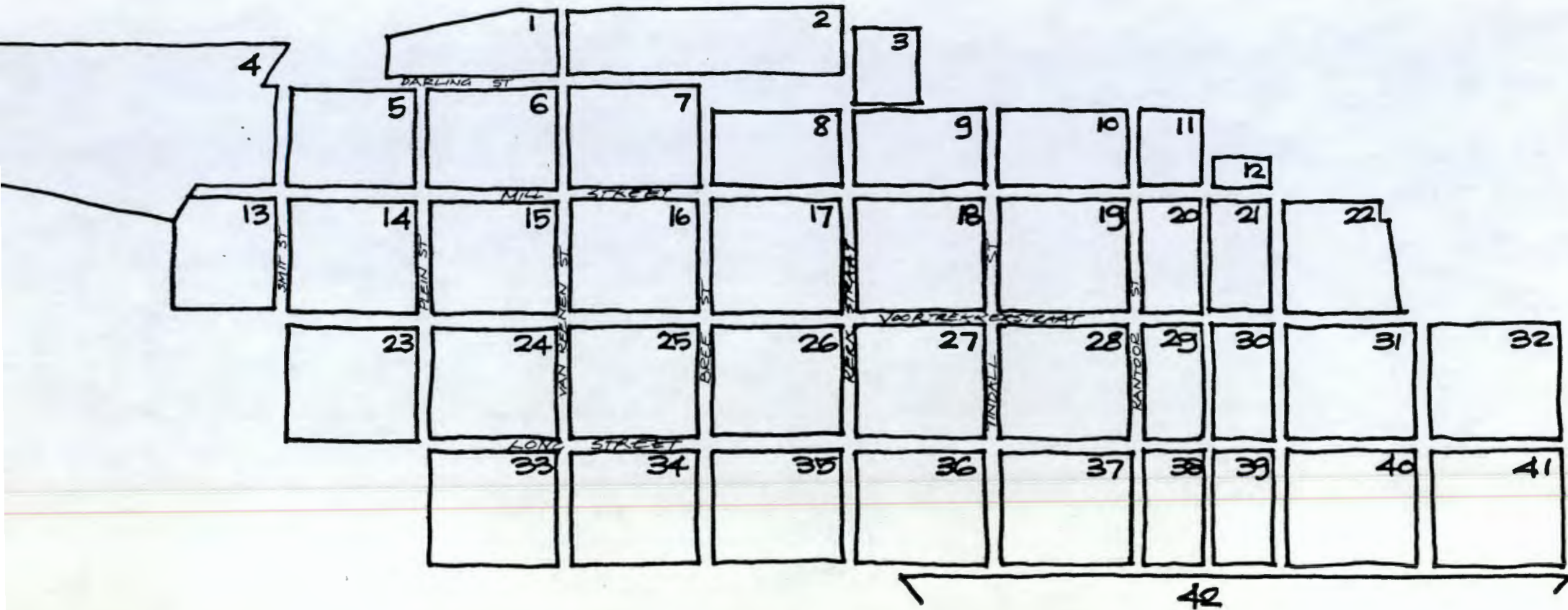


CLASSIFICATION OF BUILDINGS  
 KLASSIFIKASIE VAN GEBOUE

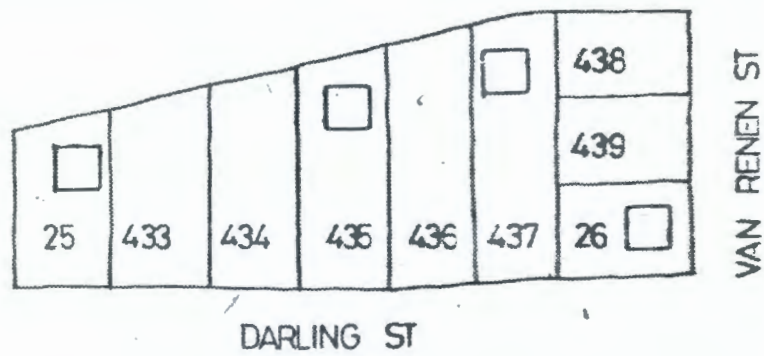


# McGREGOR

## BLOCK NUMBERS







Mc GREGOR  
BLOCK.1

1-25



Long, modern house of uncoursed local stone with straight end gables. Thatched saddle roof with dormer windows and hooded gable over off-centre front door. Semicircular fanlight above panelled door with arched glazing. Natural timber, small-pane casement windows. Walled stone stoep with wide stone steps and posts capped with plaster. Erf is terraced, with uncoursed stone walls.

1-26



1-26



Modernised vernacular house with straight end gables and iron saddle roof with ventilators under eaves. Front built in with iron roof, steel windows and modern glazed door. Parapeted extension at side of house. End gable on corner has loft door and staircase and is rough-plastered, as is extension at back with monopitch roof and small, round-topped gable.



1.435

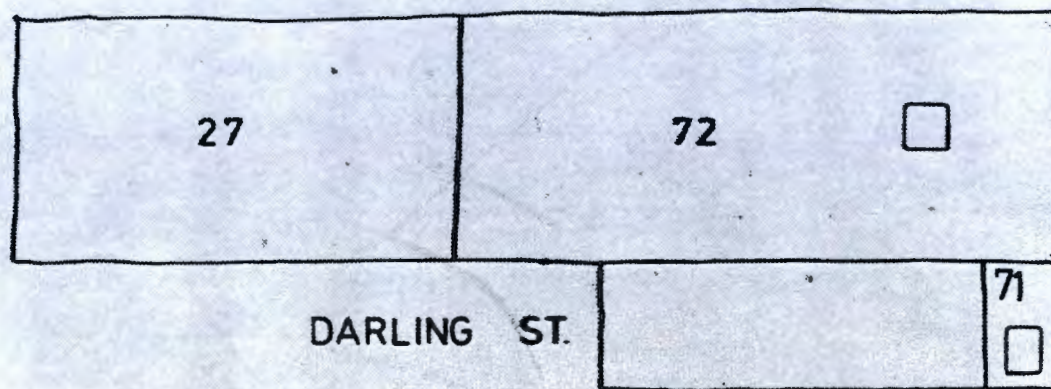
Plastered house with monopitch roof sloping back from plain parapet, which steps down at the sides. 2 x 2 sashes with internal folding shutters to front windows, louvred shutter to end windows. Stable door. Steep with plastered, capped columns supporting gum-pole pergola.



1.437

Plastered, thatched house with straight end gables and internal hearth. Modern casement windows and glazed stable door. Pergola over stoep, with plastered pillars.

VAN REENEN ST.



DARLING ST.

GREWE ST

CHURCH ST

Mc GREGOR

BLOCK 2

2-71



Modernised vernacular house with straight end gables and corrugated iron saddle roof. Front verandah with corrugated iron roof, enclosed with steel windows, screens and double screen door.

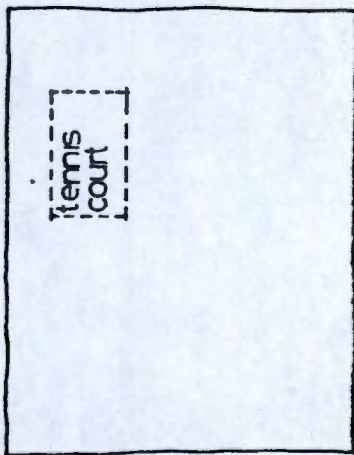


2-72

#### Dutch Reformed Church Campsite

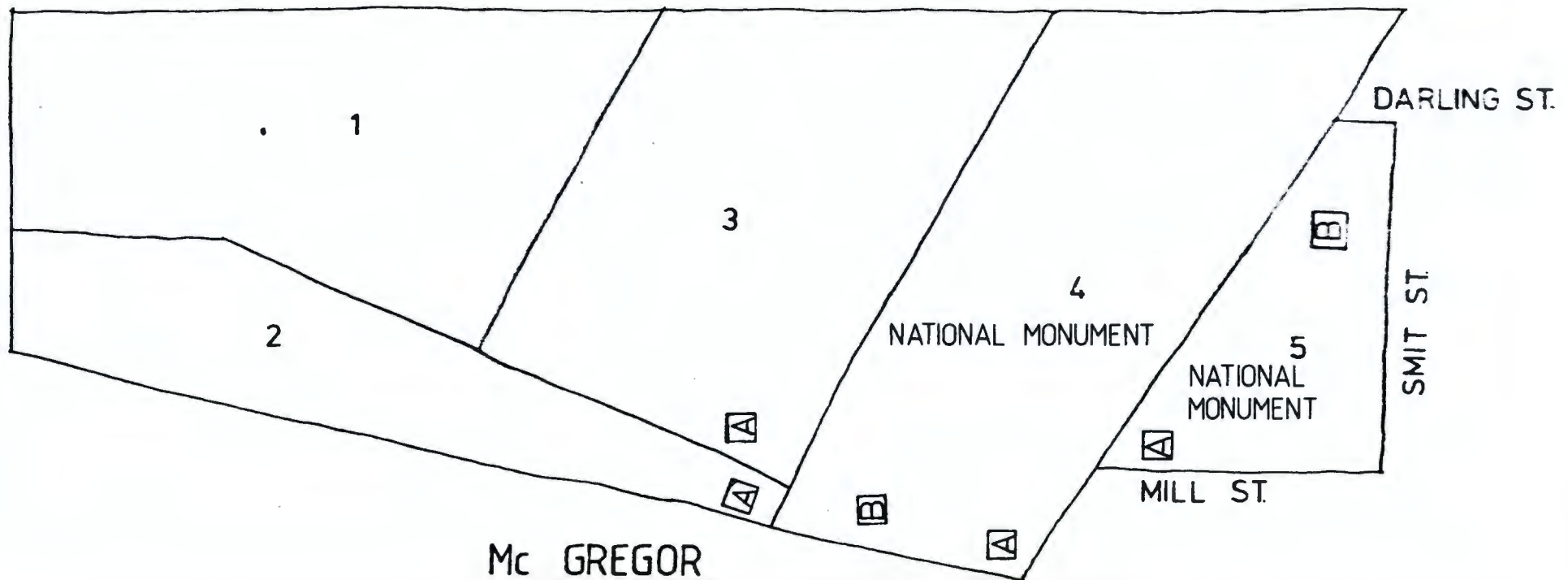
Complex of buildings. Church with corrugated iron saddle roof and covered end gables. Plastered. Steel windows with pointed arches. Double door with arched fanlight. Second building with hipped iron roof. Plastered, with stone plinth. 15 x 20 sliding sashes.

CHURCH ST



GREWE ST

Mc GREGOR  
BLOCK 3



Mc GREGOR  
BLOCK 4



4.2  
NM

MILL National Monument

Stone building with corrugated iron saddle roof. End gable with loft door, clad with corrugated iron. Old wooden mill wheel and channel, not in working order.



4.3  
NM

Double storey, parapeted outbuilding. First floor has two openings with wooden doors. Ground floor has modern wooden double doors and a 6 x 6 sash on the side.





4·4A  
NM

NATIONAL MONUMENT.

Vernacular building with straight end gables, loft door and thatched roof.



4·4B  
NM

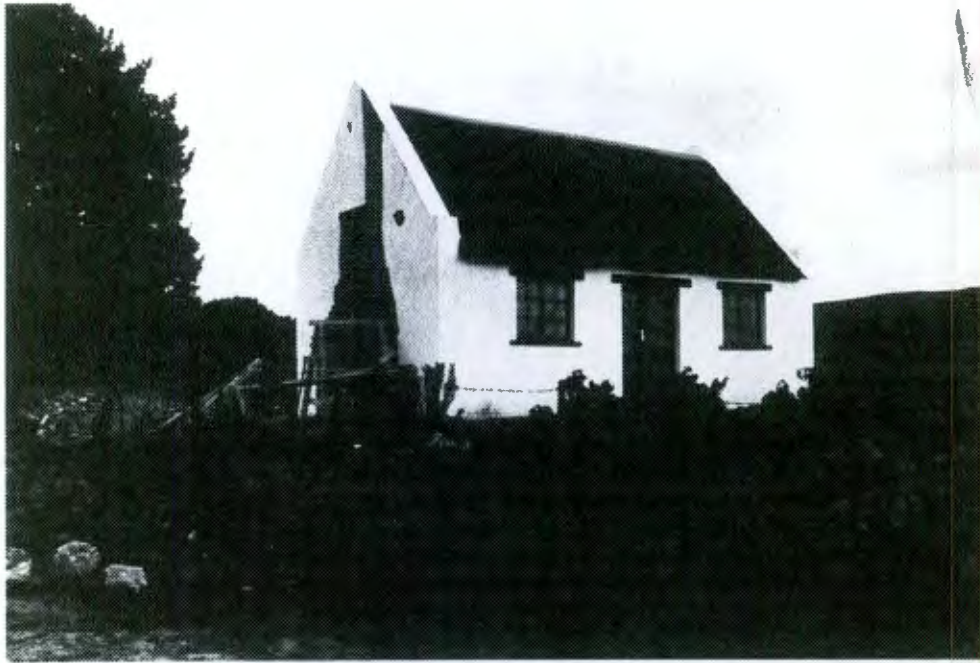


MILL VILLA RESTAURANT

National Monument.

Recently renovated. Plastered building with thatched roof. One triangular end gable, one end hipped, with a projecting thatched wing at the rear with wolf-end and round vent. Gable end has a parapeted extension with plaster cornice, set back from front facade but projecting at the rear. 6 x 6 sashes and small-pane casements. Small saddle-roofed porch supported on timber brackets over front door. Steop between wings at rear. Steel casements.

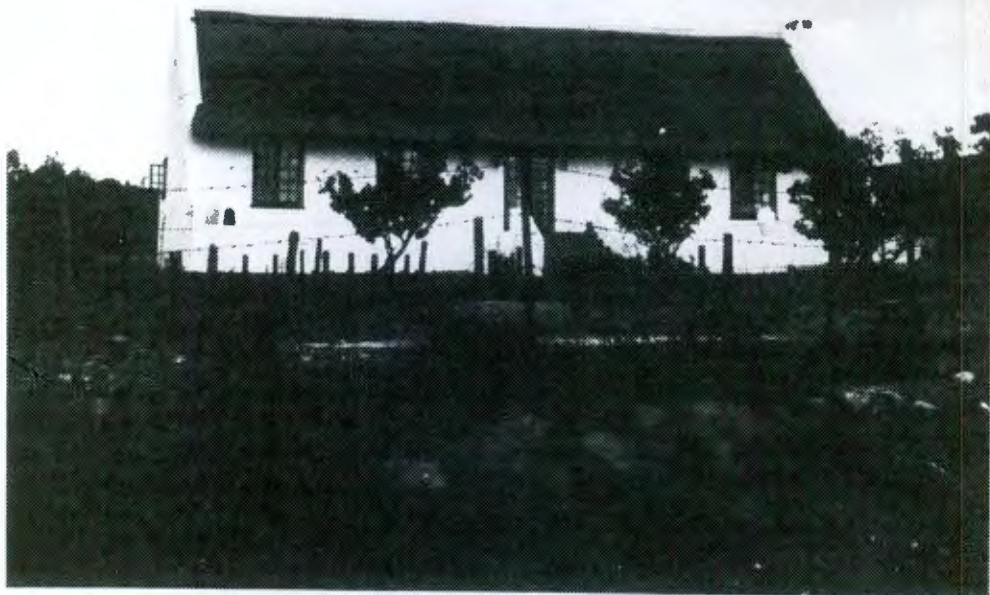
4.5A  
NM



**NATIONAL MONUMENT**

Recently renovated vernacular cottage with thatched roof, round-topped triangular end gables, small loft window and external hearth. Modern 6 x 6 casements and small-pane French doors, all with timber lintels.

4.5B  
NM

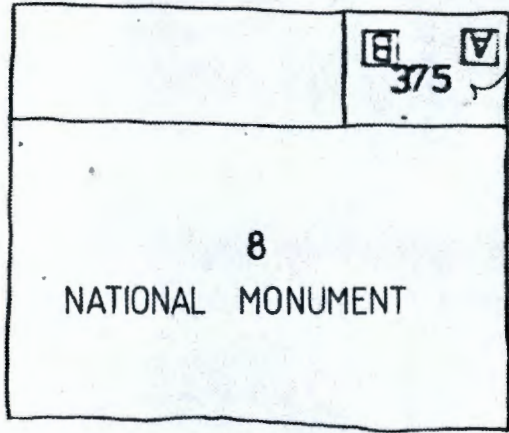


**NATIONAL MONUMENT**

Recently-built house with thatched saddle roof and straight end gables with external chimney. Modern 10 x 10 wooden casements and small-pane French doors. Raised stoep with wide steps.

DARLING ST

SMIT ST.



NATIONAL MONUMENT

PLEIN ST.

MILL ST.

Mc GREGOR  
BLOCK 5



5-375  
NM

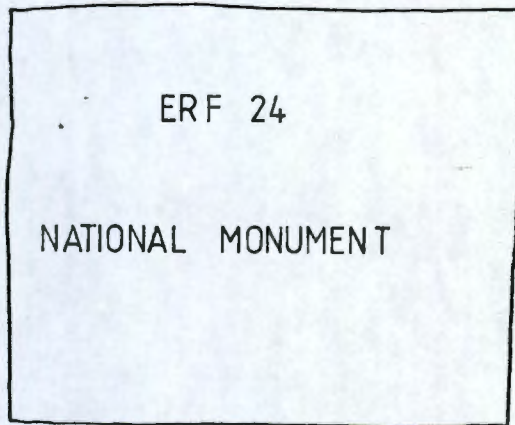


5-375  
A  
NM

National Monument, 1975.

DARLING ST

PLEIN ST



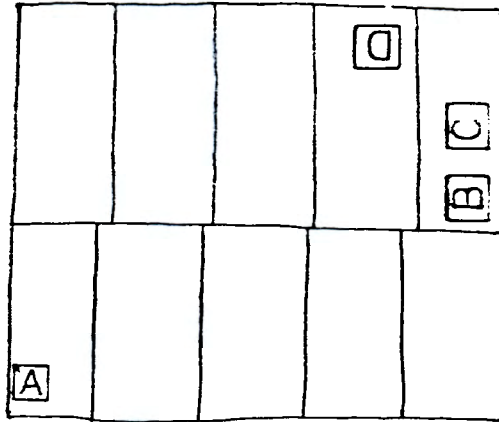
VAN RENEN ST

MILL ST

Mg GREGOR  
BLOCK 6

DARLING ST.

VAN RENEN ST.



BREE ST.

MILL ST.

Mc GREGOR  
BLOCK 7

7-A



Vernacular cottage with thatched roof, straight end gables, external hearth. Modern 10 x 10 wooden casements. Stable door with upper small-pane glazing. Pergola with plastered pillars.

7-B



Large store with monopitch roof. Stepped-up parapet with dentilled cornice. Rough plaster with smooth plaster corner quoins and window surrounds. Windows boarded up.

7-C



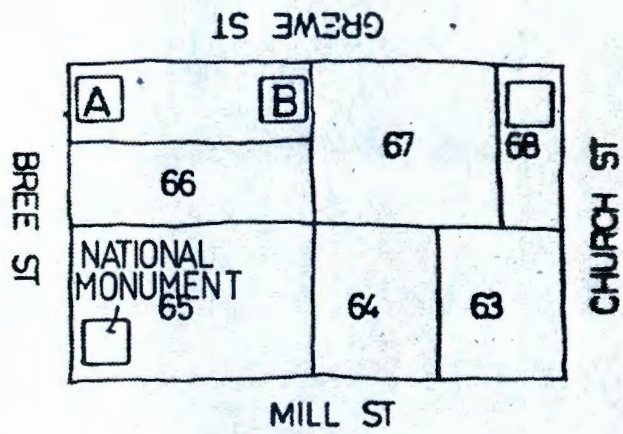
Cottage with straight end gables and fancy thatching on saddle roof. Extension on side with stepped-up parapet. 8 x 8 casement windows. Modern entry porch with stepped-up parapet, casement windows and glazed double doors.

7-D



Cottage and adjacent garage with straight end gables and corrugated iron saddle roofs. Composite 6-pane wooden casement windows. Narrow door. Garage has two garage doors and 6 x 6 sash.





Mc GREGOR  
BLOCK 8

8-65

NM



### NATIONAL MONUMENT

Double storey building with stepped-up parapet and moulded cornice. 6 x 6 sashes with plaster surrounds. One blind window on upper floor, with double wooden garage doors below. Panelled door with plaster surround. Free-standing pillars in front of facade.

8-A ●



Double storey building with iron roof. Upper floor (probably later addition) has steel casements. Ground floor has 6 x 6 sashes with internal shutters.

8·B

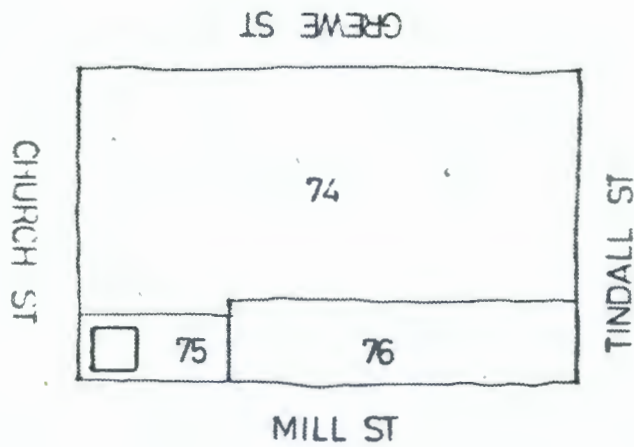


Double dwelling with thatched roof and straight end gables. 10 x 10 wooden casements. Modern panelled door. Appears to be old cottage with addition.

8·68



Modernised vernacular cottage with straight end gables and thatched roof, now extended at lower pitch. Modern casement windows.

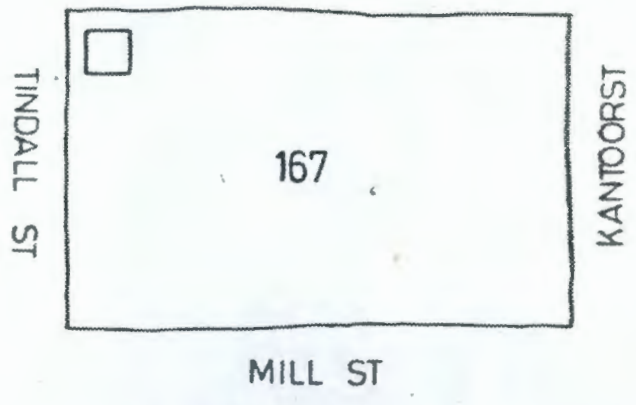


Mc GREGOR  
BLOCK 9



9-75

Cottage with corrugated iron saddle roof and straight end gables with plaster moulding. Windows with louvred shutters and 4-panel door with fanlight have plaster surrounds. Steep with wall and arched entry, with plaster mouldings. Modern extension at side with corrugated iron roof and steel casements.



Mc GREGOR  
BLOCK 10

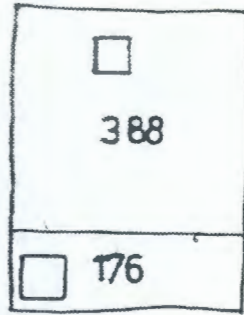


10-167



Cottage with straight end gables and corrugated iron roof. Rough-plastered, with smooth plaster corner, window and door quins. Projecting extension on side with monopitch roof. 6 x 6 sashes. Wide stable door with fanlight. Plain stoep.

KANTOOR ST



MEUL ST.

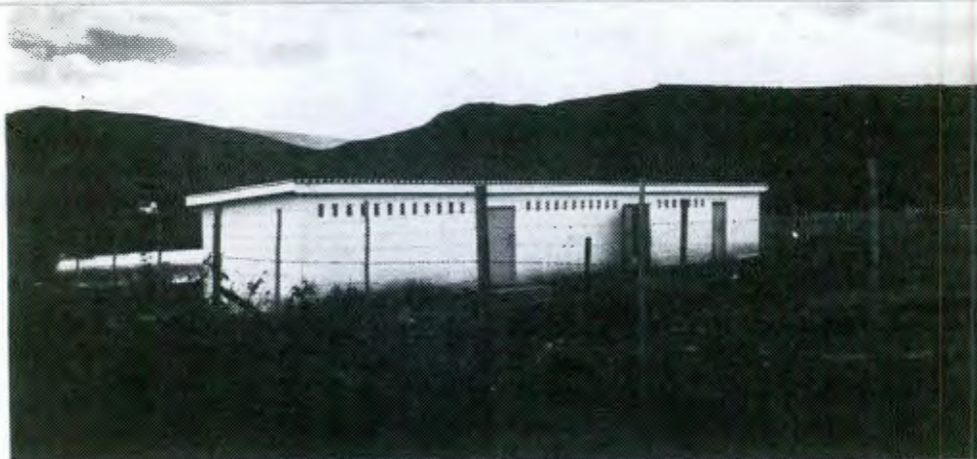
Mc GREGOR

BLOCK 11



11-176

Modern house with monopitch IBR roof and wooden fixed-pane/casement windows.



11-388

Poultry run with corrugated iron roof.

A

B

389

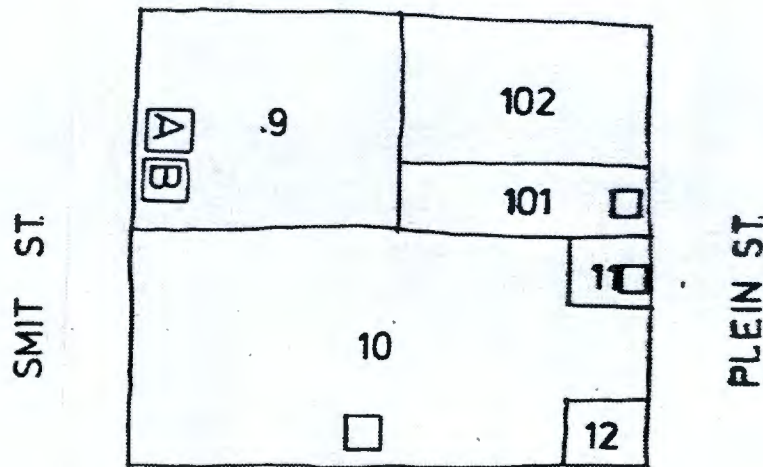
MEUL ST.

Mc GREGOR

BLOCK 12



Modern farm outbuildings.



BLOCK 13

VOORTREKKER ST.

Mc GREGOR  
BLOCK 14



14-101



House with hipped, thatched roof with triangular, louvred dormer above front door. Recessed entry with 3-panel door with side- and fanlights. Recessed verandah enclosed with steel windows. Composite 6-pane casements with 4-pane fanlights.

14·9A



House with corrugated iron roof and straight end gables with plaster moulding. Quoins to corners, windows and doors. 2 x 2 sashes. Glazed Victorian door with fanlight and coloured glass. End gable has loft door and wooden stair.

14·9B



Adjacent garage with corrugated iron roof and straight end gables with diamond windows. Wooden double doors. Stone plinth.

14·10



Cottage with corrugated iron roof and covered end gables. Two stable doors, one with 4-pane fanlight. 9-pane casement window.

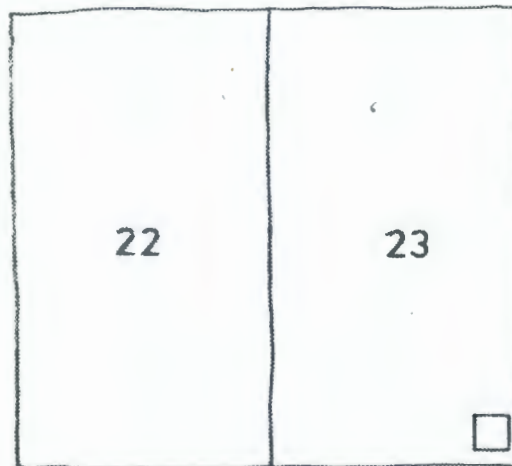
14·11



Modern house with hipped corrugated iron roof with central projection with hipped roof. Wooden picture windows.

MILL ST

MILLIN ST



VAN RENEN ST.

VOORTREKKER ST.

Mc GREGOR  
BLOCK 15

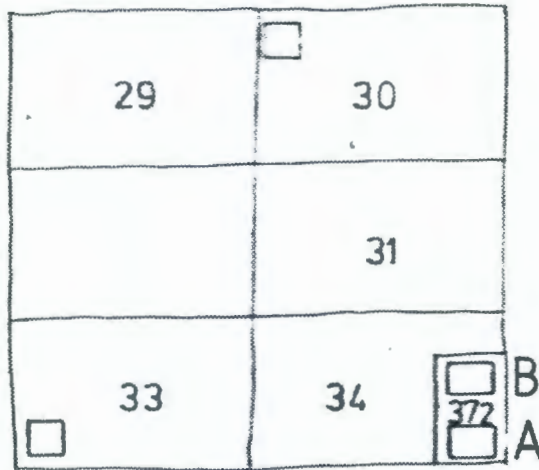
15-23



Double storey, 3-bay house with stepped-up parapet with mouldings and cornice. Double storey verandah with bullnose roof; timber columns, brackets, drip fret and balustrade on first floor, cast iron columns, brackets and frieze on ground floor. Quoins to corners, windows and doors. 6 x 6 sashes with internal shutters. 2 x 2 panelled double doors with geometric fanlight on ground floor, glazed, panelled door on first floor.

MILL ST

VAN RENEN ST



BREE ST.

VOORTREKKER ST.

Mc GREGOR  
BLOCK 16



16-30

House with hipped corrugated iron roof. 2 x 2 sashes with internal shutters.  
Enclosed verandah with steel windows.

16.372A



Cottage with corrugated iron roof and straight end gables. Internal chimney, off-centre loft door. 6 x 6 sashes; front door with fanlight

16.372B



Cottage with thatched roof and straight end gables. End gable facing street has loft window divided into four, with 4 panes per quarter, and three small 4-pane windows. The long facade has cast iron vents under the eaves. 6 x 6 sashes; 4-panel door and corrugated iron garage doors. Pergola on capped, plastered columns, with wooden cross-braced balustrade.

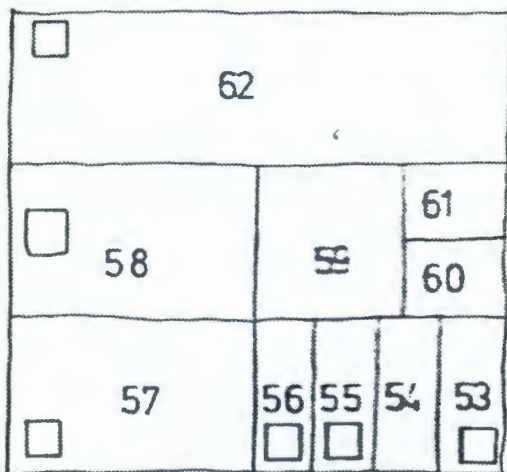
16.33



Vernacular cottage with reed thatch, straight end gables, internal chimney and off-centre loft door. 6-pane casements and stable door with fanlight, all with plaster surrounds.

MEUL ST

BREE ST.



KERK ST.

VOORTREKKER ST.

Mc GREGOR

BLOCK 17

17-53



POST OFFICE

Building with splay corner and hipped iron roof with small covered gable at splay. Verandah on two sides with small gable at corner and pipe columns. Panelled doors with fanlights. Industrial steel windows. Modern telephone booths attached to wall; post boxes on corner.



17-55



Victorian building with two projecting wings and double storey verandah between. Monopitch roof, parapeted, with heavy cornice and pediments over wings and centre of recessed portion. Quoins to corners and openings. 6 x 6 sashes (one with louvred shutters). 2 x 2 panel double door with geometric fanlight. Verandah has wooden columns, brackets, simple balustrade and trellis on the ground floor. Side elevation has outside staircase leading to upstairs door, and external hearth.

17-56



Modern house of painted brick work with IBR roof. Arched parapets to two projecting wings, with plaster decoration on top.

17-57



Vernacular cottage with straight end gables and fancy thatching. 6 x 6 sashes with external screens and internal shutters. Stable door with fanlight. Parapeted extension with steel windows.

17-58



Vernacular cottage in two sections with thatched roof lower than corrugated iron roof. Straight end gables and external hearth. 6 x 6 sashes.

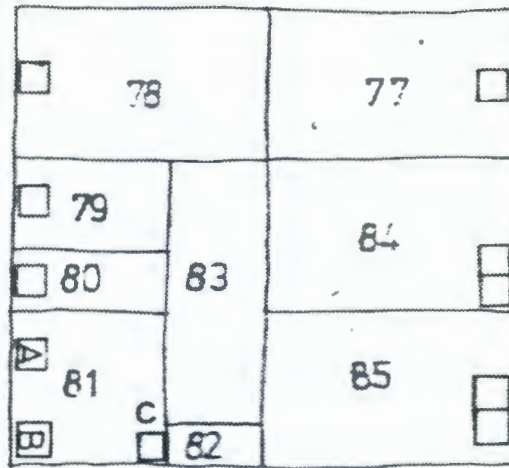
17-62



Vernacular cottage, thatched, with straight end gables and loft door with ladder. Flat-roofed extension. 6 x 6 sashes and 12-pane casement. Panelled stable door.

MEUL ST.

KERK ST.



TINDALL ST.

VOORTREKKER ST.

Mc GREGOR

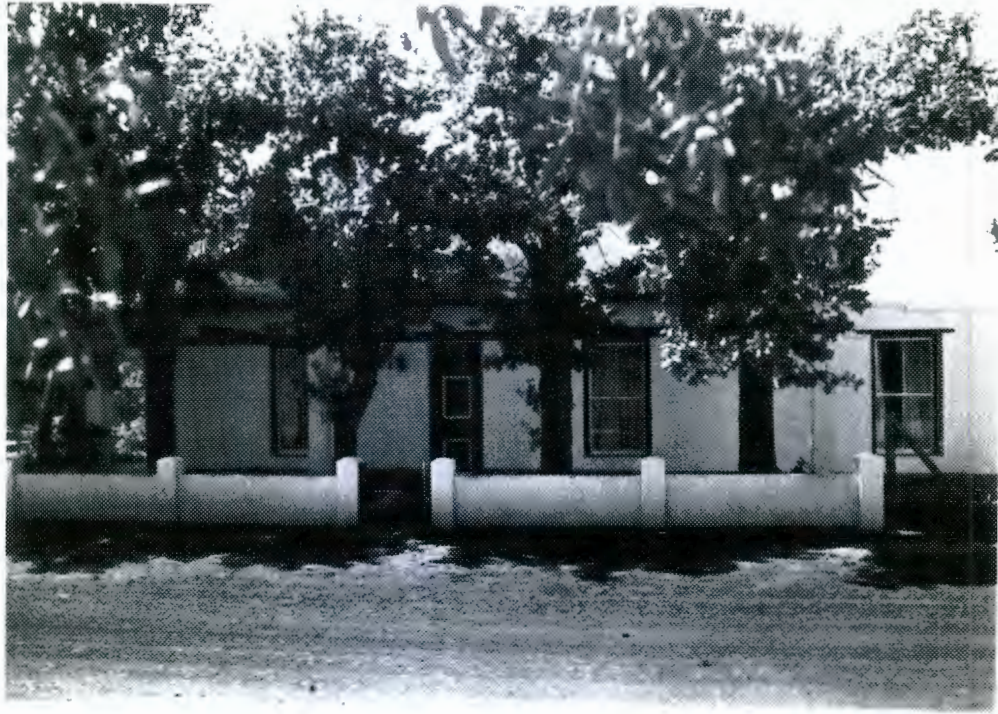
BLOCK 18

18-78



Vernacular cottage with thatched roof and straight end gables. 6 x 6 sashes and small-pane glazed door with external boarded shutters with curved tops. Stable door with canopy on wooden brackets. Pergola on plastered columns over stoep with low plastered wall. Wooden fence with gate matching shutters.

18·79



Vernacular cottage with thatched roof, straight end gables and parapeted extension. 2 x 2 sashes. Stable door with fanlight. Pergola on plastered columns. Low, plastered boundary wall with posts.

18·80



Modernised cottage with straight end gable to street. Parapeted extension in front of gable with steel casements and modern door. Vestiges of old boundary wall and pillars remain under windows. Set back, attached, parapeted garage with wooden double doors.

18-81 A



Modern vernacular style cottage with thatched roof with deep overhang, straight end gables and external hearth. 10-pane triple casement windows. Adjacent thatched garage with straight end gables.



18-81 B

NM

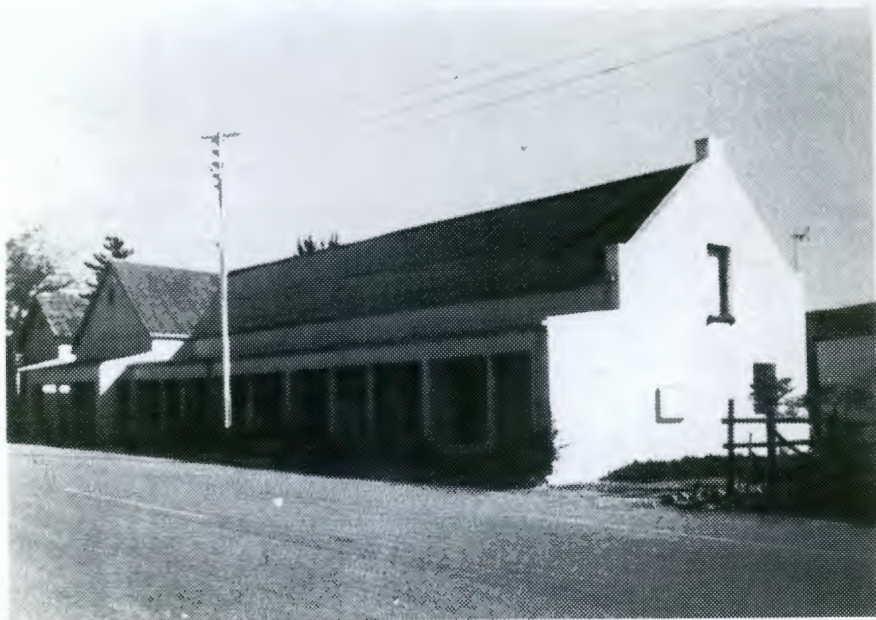
Municipal Buildings.  
National Monument, 1975.

18-81C



Victorian cottage with covered gable facing street. Tall finial and barge boards with pendants. Round cast iron vent. Plaster decoration includes moulding around vent, chevron pattern above verandah and quoins to corners and door (now partially obscured). Verandah with cast iron columns and brackets and side walls. 3-panel door with fanlight. 2 x 2 sash with internal shutters.

18-82



Long building with iron saddle roof with straight end gable at one end and covered gable at other end with rectangular vent. Verandah on precast columns. Building is partly rusticated. Various doors, including Edwardian 3-panel, and 3 x 3 double doors with fanlights. 6 x 6 sashes with louvred shutters and tall small-pane casements. Shopfront windows under gable.

18-84



Semi-detached dwellings.

On right is house with iron saddle roof and covered end gables. Verandah on pipe columns with timber drip fret. 6 x 6 sashes and 4-panel door with geometric fanlight.

On left is building with stepped-up parapet and verandah with matching trim and low wall. 6 x 6 sashes, 4-panel door with fanlight.



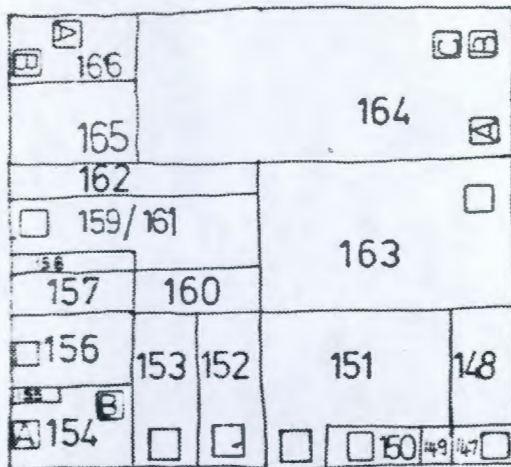
18-85



Vernacular cottage in two sections, thatched, with straight end gables.  
Loft door. Stable doors, small casement windows.

MEUL ST

TINDALL ST.



KANTOOR ST.

VOORTREKKER ST.

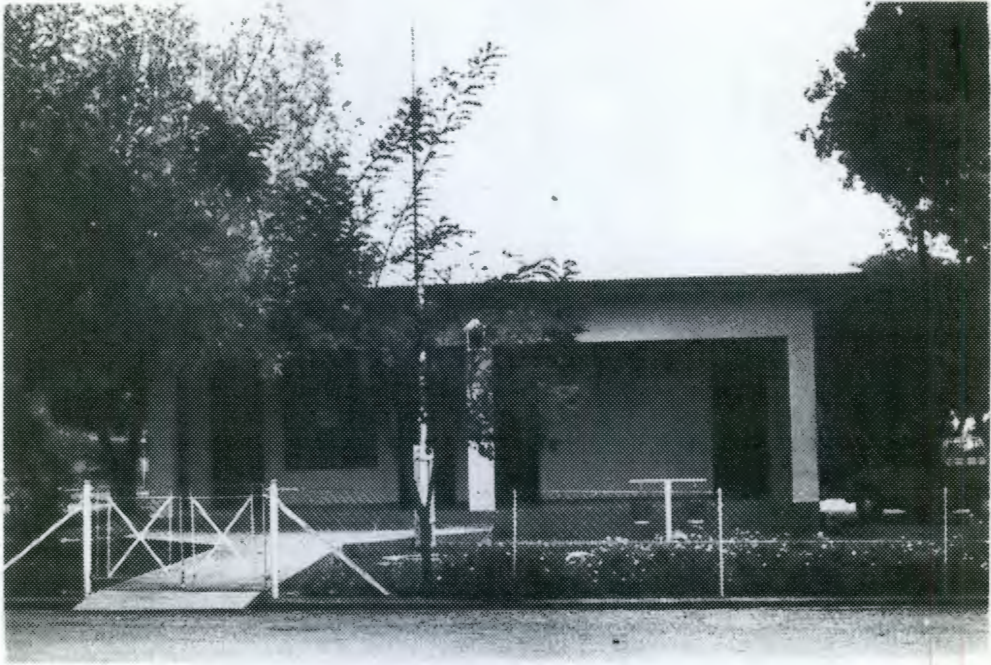
Mc GREGOR  
BLOCK 19

19-147



Long house with plain parapet and projecting wing at one end. Modern 1 x 1 sashes and 2-panel door. Pergola on plastered columns.

19·150



POLICE STATION

Modern building with hipped iron roof and recessed verandah. Batten doors.

19·151



Modern, L-shaped house with hipped iron roof, recessed verandah and steel windows.

National Monuments Council Library

19-152



G. . VAN ZYL, ALG. HANDELAAR EN KAFEE  
Facebrick building with stepped-up parapet and concrete porch on facebrick columns. Modern signage, shopfronts, double glass doors and steel windows.

19-153



Modernised cottage with corrugated iron saddle roof and covered end gables with finials. Steel windows, modern glazed door. Pergola on plastered columns. Attached garage with stepped-up parapet and wooden double doors.

19-154A



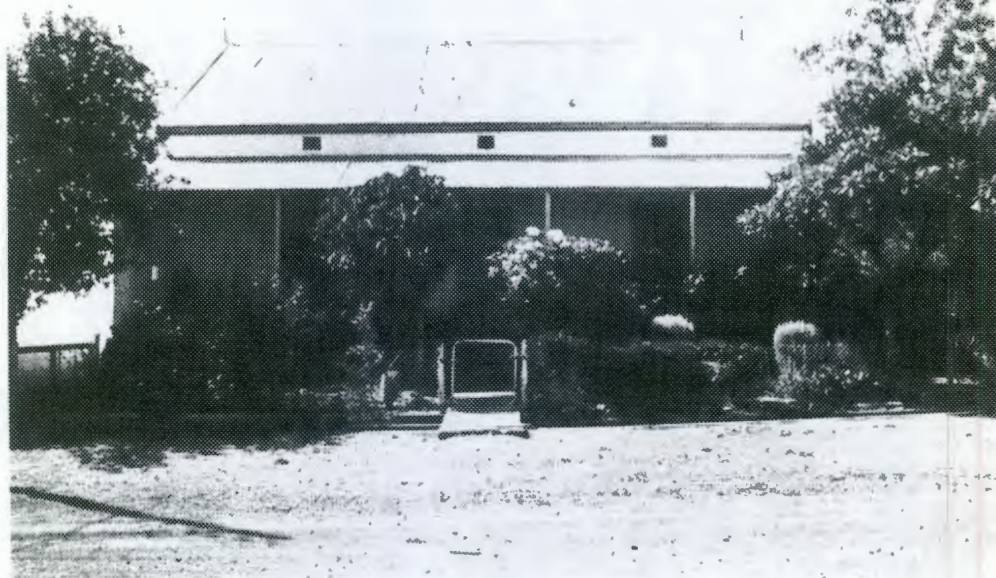
Victorian house with corrugated iron roof and projecting covered gables at each end. Gables have finials and louvred vents with pointed arches and fretwork. Quoins to corners and openings. 6 x 6 sashes, 2 x 2 panel double door with fanlight. Bullnose verandah between gables, with cast iron columns, brackets and drip fret. Low, plastered wall with posts in front of verandah. Gable on left had hipped verandah that runs around the side elevation, with pipe columns and wooden fretwork trim. Both sides have loft doors and wooden staircases.

19-154B



Outbuilding with corrugated iron roof, covered end gables and corrugated iron sliding doors.

19-156



Victorian cottage with corrugated iron roof with covered end gables, finials and vents under eaves. 2 x 2 sashes and 4-panel door with fanlight, all with plaster surrounds. Vernach with end walls and pipe columns.



19-159/161

Vernacular cottage with corrugated iron roof and straight end gables, side-on to street. 6 x 6 sashes.

19-166A



Vernacular outhouse with thatched roof and straight end gables. Louvred loft door and slatted door in gable end. Lean-to facebrick garage and carport addition at rear.

19-166B



Vernacular cottage with parapet, 6-pane casements and door with window panes.

19-164 A



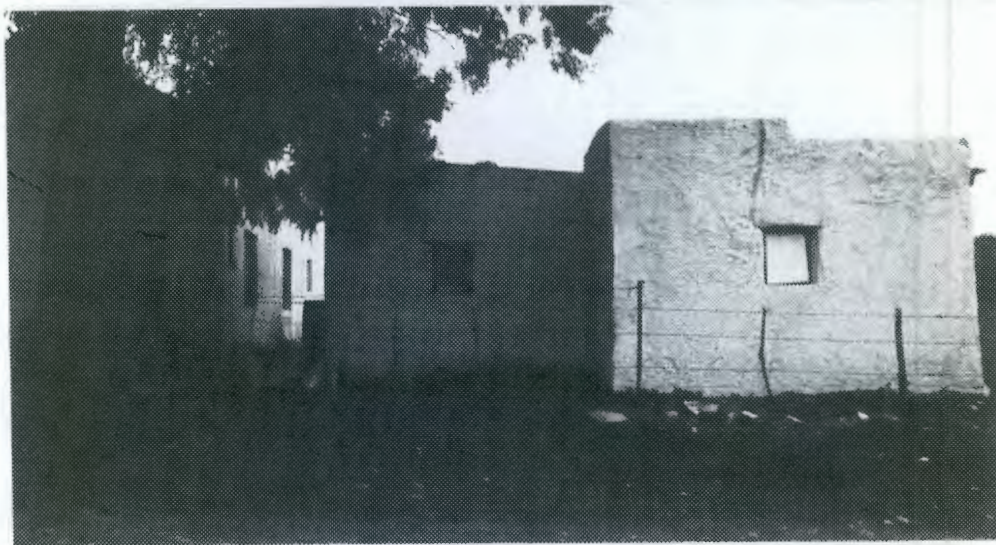
Traditional cottage with stepped-up parapet and internal hearth. Old stable door with 3-pane fanlight.

19-164 B



Vernacular cottage with corrugated iron roof triangular end gables and external hearth. Stable door with fanlight (boarded up) and boarded up window.

19-164 C



Traditional outbuilding with monopitch roof, partly parapeted, and small square windows.



19-163



Traditional cottage with thatched roof with hooded gable over stable door. Straight end gables and external hearth. High, plastered wall adjacent, with door. No windows in street facade.

MEUL ST

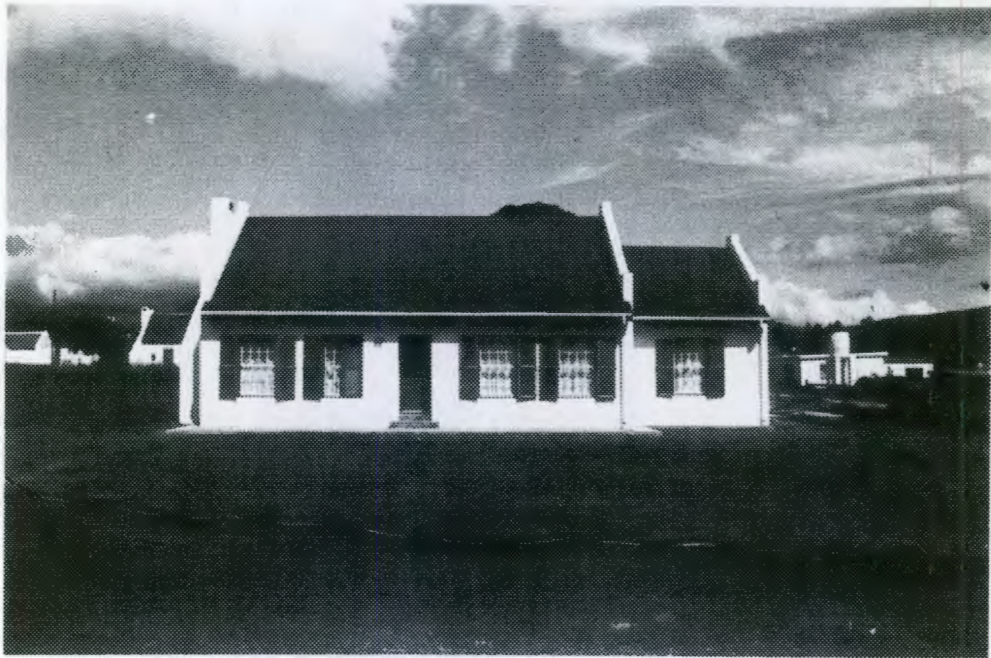
KANTOOR ST.

<input checked="" type="checkbox"/> 177 <input checked="" type="checkbox"/>	<input type="checkbox"/> 178
<input type="checkbox"/> 180	179
<input type="checkbox"/> 399	181 <input type="checkbox"/>
183	182 <input type="checkbox"/>
185	
<input checked="" type="checkbox"/> 184 <input checked="" type="checkbox"/>	<input checked="" type="checkbox"/> 186 <input checked="" type="checkbox"/>

VOORTREKKER ST.

Mc GREGOR

BLOCK 20



20-178

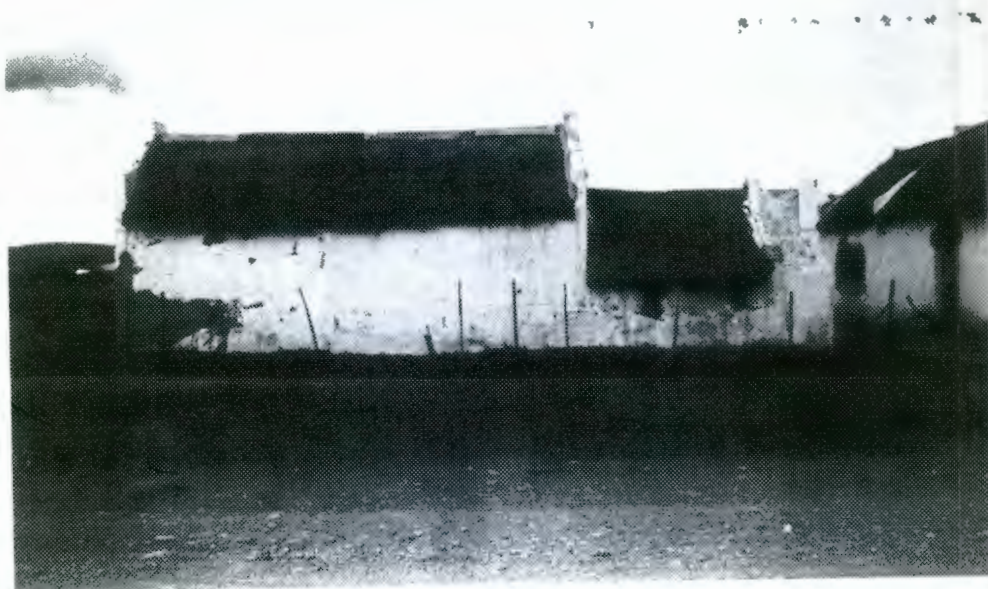
Modernised vernacular cottage with smaller extension. Corrugated iron roofs, straight end gables and external hearth. 6 x 6 sashes with louvred shutters. Panelled stable door.

20-177A



Modernised vernacular cottage with 2 sections, reed thatch and straight end gables. External hearth. Wooden casements and modern stable door.

20-177B



Vernacular cottage with reed thatch, straight end gables, with small thatched extension with straight end gable and external hearth.

20-180



Vernacular cottage with thatched roof, straight end gables and external hearth. 6-pane casements, stable door with 3-pane fanlight. Parapeted extension with external hearth and door with window panes, projecting forward to edge of stoep.

20-399



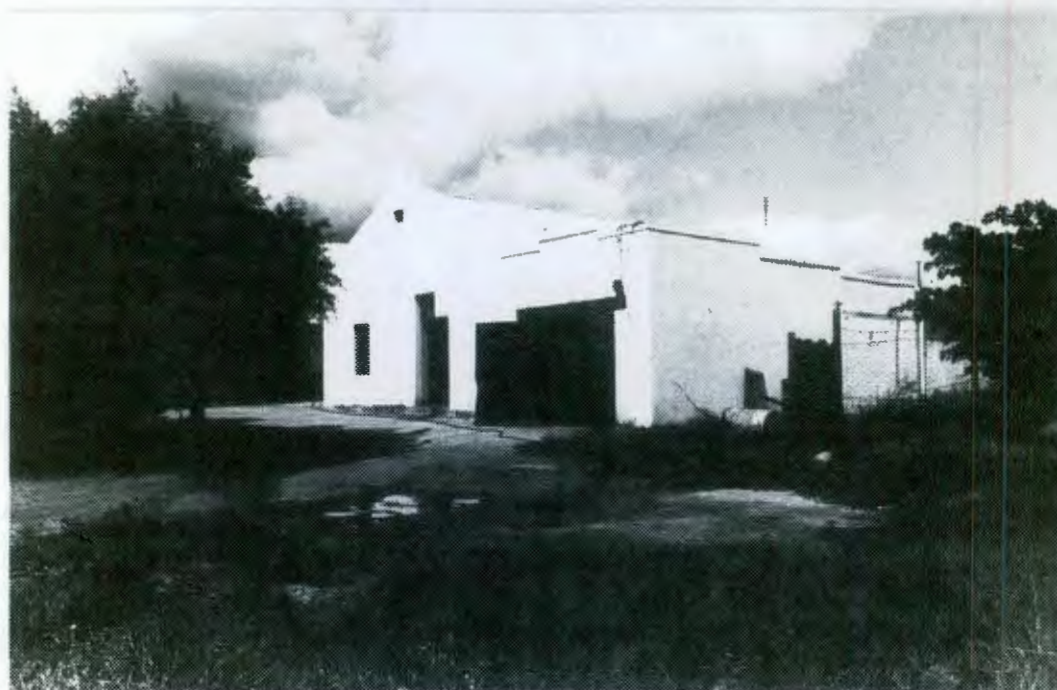
Vernacular cottage with wide eaves and fancy ridge pattern. Straight end gables. 6 x 6 sashes. Modern stable door with fanlight.

20-181



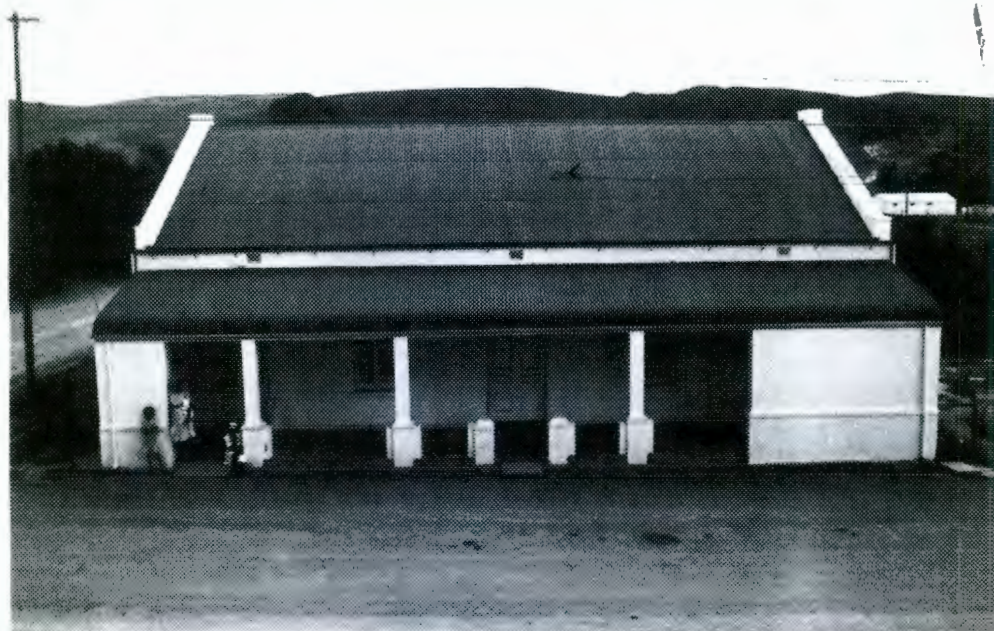
Modern cottage with low-pitch corrugated iron saddle roof, partly extended to form verandah. Steel casements, facebrick verandah wall.

20-182



Outbuilding with corrugated iron roof and straight end gables with cast iron vent. Extension with stepped-up parapet. Double wooden garage doors and various openings with shutters.

20-184 A



House with hipped iron roof and straight end gables with loft door. Bullnose verandah with plastered brick columns, partially walled in. Quoins to openings and corners. 3 x 3 panel double doors, sash windows with louvred shutters.

20-184 B



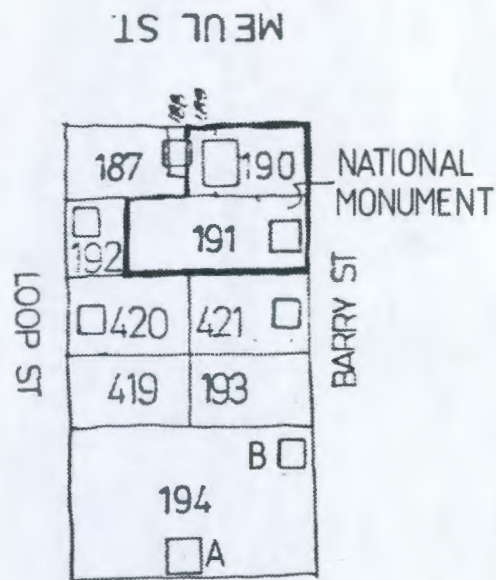
Outbuilding with corrugated iron saddle roof with traingular gable end towards street; loft door.



DRIEKA'S SENTRALE WINKEL & KAFEE

Long L-shaped building with corrugated iron saddle roof and straight end gables with arched tops. Vents under eaves. Hipped verandah across long facade, with plastered brick columns. Shop at one end and house on corner. House has plastered balustrade to verandah, with precast balusters. 6 x 6 sashes and 2 x 2 panel double doors with geometric fanlights.

Shop has modern signage and steel shopfront windows, and loft door with stair in gable end. House has external hearth in gable end.



VOORTREKKER ST

Mc GREGOR

BLOCK 21



21-189/90

NM

**NATIONAL MONUMENT**

Vernacular cottage with thatched roof and straight end gables. Additions with lower thatched roof and stepped-up parapet. 8 x 8 casements, 6 x 6 sashes and 12-pane casements.





21-191  
NM

NATIONAL MONUMENT

Vernacular cottage with thatched roof and straight end gables. 6 x 6 sashes and stable door with 3-pane fanlight, with plaster surrounds. Pole fence.



21-421



Vernacular cottage with thatched roof, straight end gables and external hearth. Quoins to corners and openings. 6 x 6 sashes. 4-panel door with geometric fanlight.

21-194 A



FRENAS CAFE

Modern shop with high parapet and monopitch roof. Concrete canopy over shop-fronts. Modern signage.  
Modern house added subsequent to survey.



21-194B

Vernacular outbuilding with corrugated iron roof, straight end gables and wooden door.

21-420

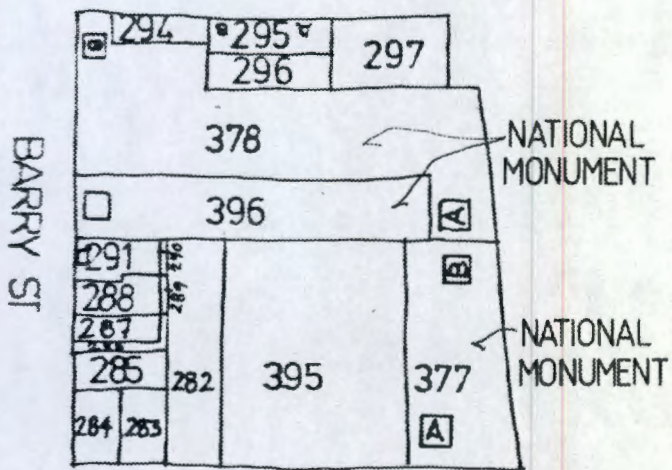


Vernacular cottage with thatched roof with wide eaves, straight end gables and external hearth. 6 x 6 sashes. Panelled door with 3-pane fanlight.

21-192



Vernacular cottage with reed thatch, straight end gables, external hearth and small thatched addition. 6-pane casements. Stable door. Low, plastered walls around addition and hearth. Parapeted double garage.



VOORTREKKER ST.

Mc GREGOR  
BLOCK 22

22-291



Vernacular cottage with thatched roof, straight end gables and external chimney. 6 x 6 sashes. Modern glazed door. Small adjacent thatched garage with straight end gables, louvred vent and wooden doors, dated 1982.

22-396

NM



National Monument.

Vernacular cottage with reed thatch, straight end gables and external chimney. 4-pane casements with exposed wooden lintols.



22-378A



Vernacular cottage with reed thatch, straight end gables and external hearth. 6-pane casements with exposed wooden lintols. Stable door.



22-378B



Vernacular cottage with reed thatch and straight end gables. Slatted shutters to windows. Parapeted outhouse.



22-294



Vernacular cottage with thatched roof, straight end gables and external chimney with rounded top. 12-pane casements. Stable door.



22-295B



Vernacular cottage with monopitch roof and parapet stepping down at the sides. 12-pane casements. Stable doors.



22-295A



Vernacular cottage with monopitch roof and parapet. Two external chimneys with rounded tops. Small-headed casements.



22-377A

NM

National Monument.

Vernacular cottage with reed thatch, hooded gable over front door and straight end gables. External hearth. 4-pane casements, wooden door.

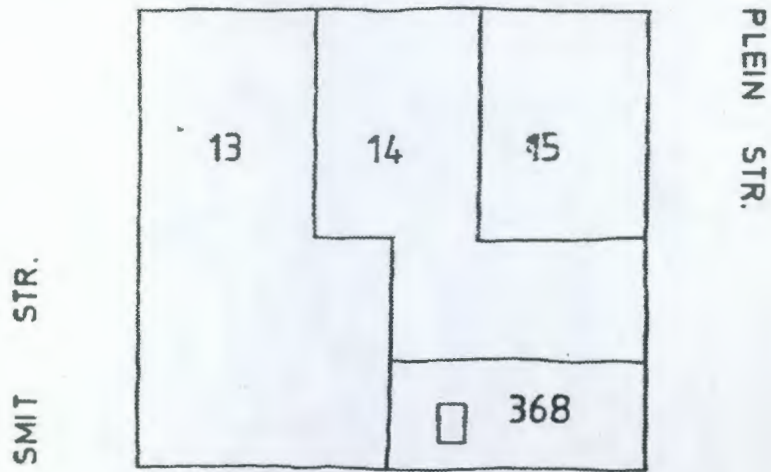


22-377B

Vernacular cottage with stepped-up parapet and internal hearth. 8 x 8 casement with external panelled shutters. Stable door.



VOORTREKKER STR.



McGREGOR  
BLOCK 23

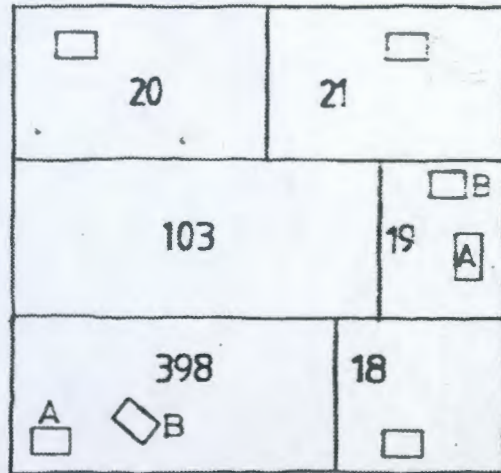


23-368

Renovated vernacular cottage with thatched roof, straight end gables and external chimney with arched top. 6-pane casements and door with plaster surrounds. Wide stoep with gumpole pergola on plastered columns.

VOORTREKKER STR.

PLEIN STR.



VAN RENEN STR.

LONG STR.

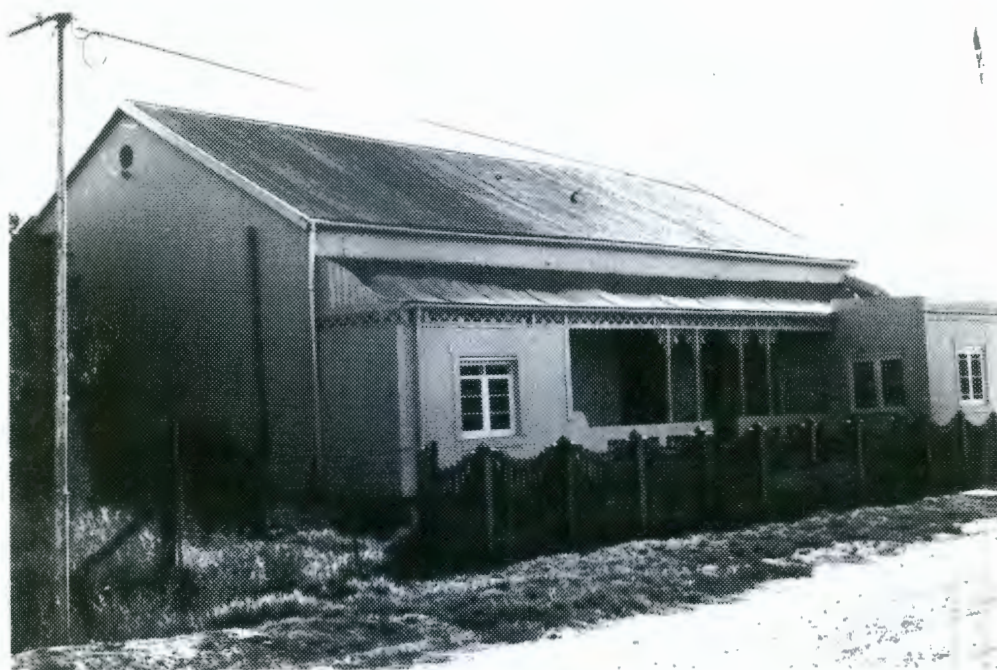
McGREGOR  
BLOCK 24

24-18



Double storey Georgian style house and attached garrage, both with stepped-up parapet and simple cornice. Steel windows to upper floor, 6 x 6 sashes to ground floor. Modern garage door. Loft door and stair to side.

24.19 A



Victorian house with corrugated iron saddle roof and covered end gables. 6 x 6 sashes with quoins, 4-panel door with vermiculated quoins. Concavo/convex verandah with cast iron columns and brackets and wooden fretwork freize. Left side of verandah built in, with wooden casement window. Right side has projecting stoepkamer with iron roof and side parapets, geometric casements and 3-panel door, all with plaster surrounds. Vibracrete boundary wall.

24.19B



Outhouse with plain parapets, modern garage doors and 4-panel door.

24·21



L-shaped, thatched cottage with hipped corner and straight end gables. Windows with louvred shutters.

24·20



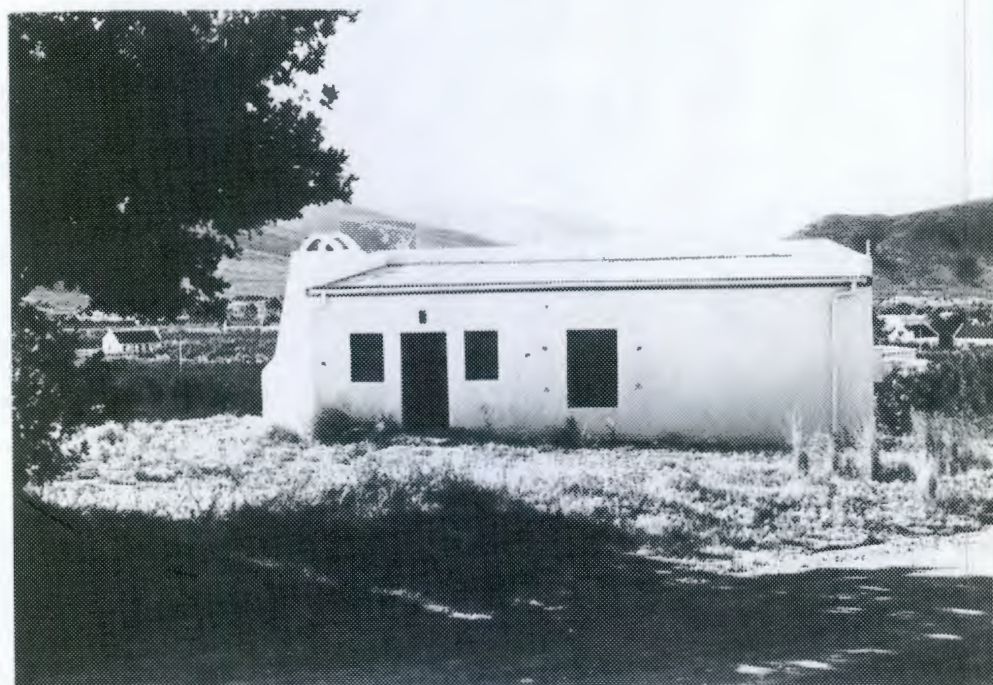
Modern house with slate saddle roof, steel windows and adjacent double garage.

24.398A



Vernacular cottage with thatched roof, straight end gables and internal hearth. Small casement windows, stable door.

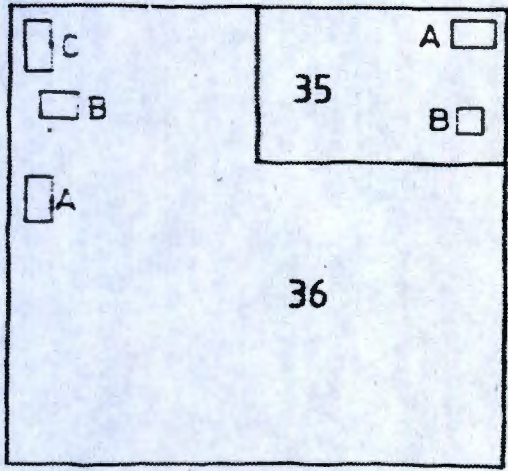
24.398B



Cottage with monopitch iron roof and stepped-up parapet. Two external chimneys with arched tops. Stable door. Windows with solid timber shutters.

VOORTREKKER STR.

VAN RENEN STR.



BREE STR.

LONG STR.

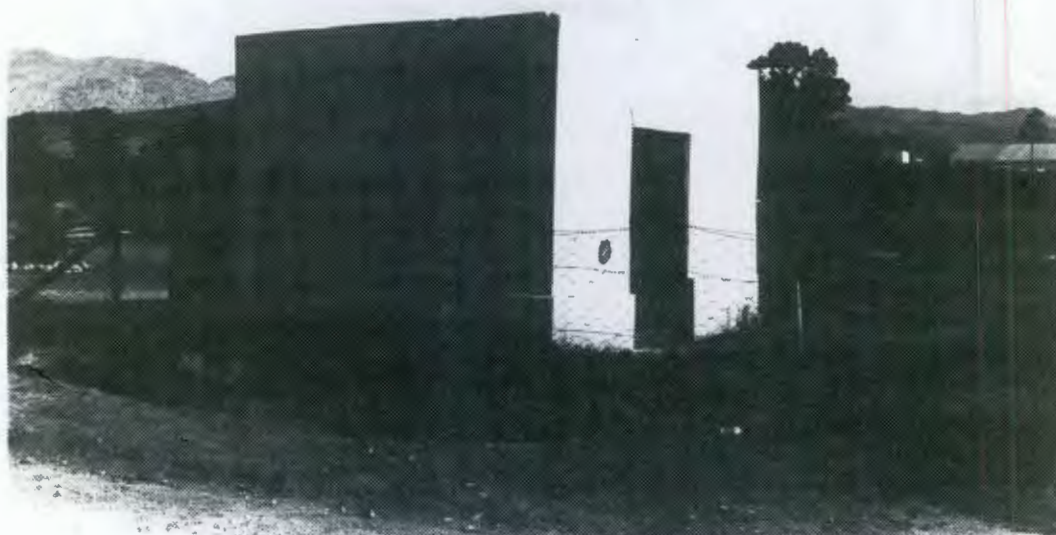
McGREGOR  
BLOCK 25

25.35A



Vernacular cottage with fancy thatching, straight end gables and loft door. 6 x 6 sashes, door with fanlight. Victorian addition on corner, at right angles to cottage. Corrugated iron saddle roof with finial. Splay at corner verandah on pipe columns, with wooden fretwork. 2 x 2 sash with louvred shutters, door with window panes. Plastered garden wall with posts and railing.

25.35B



Vernacular outhouse with parapet.



25-36A

Abandoned vernacular cottage with thatched roof failing in. Straight end gables and external chimney.



25-36B

Vernacular cottage / outbuilding with stepped-up parapet and plaster cornice. Large wooden double doors. 8 x 8 casement and small, boarded-up window.



25-36C

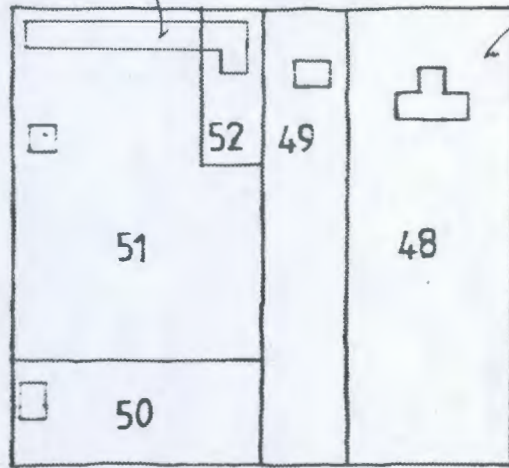
Cottage with low-pitch iron roof. One straight end gable, one with decorative apex and round vent. External chimney. 6 x 6 sashes. Verandah at rear, with round window in end wall.



VOORTREKKER STR.

NATIONAL MONUMENTS

BREË STR.



KERK STR.

LONG STR.

McGREGOR  
BLOCK 26



26-48

NM

Dutch Reformed Church.  
National Monument, 1975.

26-49



Cottage with cast iron roof and covered end gables with loft door.  
Enclosed verandah with steel casements and door with window panes.

26-52/51

NM



"Die Trein"  
National Monument

26.51



Parapeted outbuilding with iron roof, stable door and modern garage door.



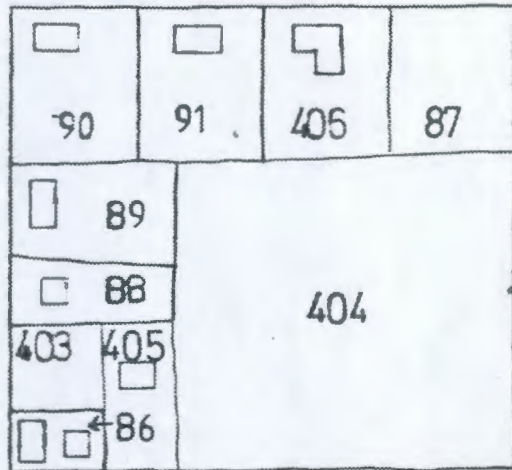
26.50



Renovated vernacular cottage with thatched roof, straight end gables and loft door. 10 x 10 casements and 4-panel door with geometric fanlight and vestiges of quoins. Parapeted extension on left with 6 x 6 sash and door with fanlight.

VOORTREKKER STR

KERK STR.



TYNDALL STR.

LONG STR.

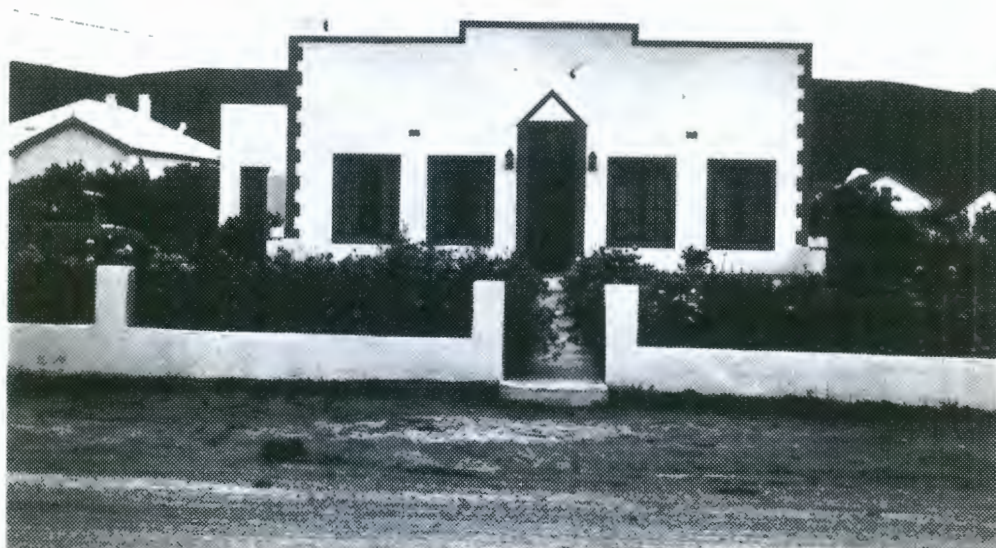
McGREGOR  
BLOCK 27



27-86

Vernacular style cottage with thatched roof, straight end gables and external chimney. Large-pane casement windows and modern door. Gum pole pergola on plastered columns.

27-405



House with stepped-up parapet and external chimney. Quoins to corners. Panelled stable door with 6-pane fanlight and plaster surround and triangular moulding over 10 x 10 caements with plaster surrounds. Quoins and surrounds in dark paint. Plastered garden wall with posts and steel railing. Adjacent parapeted garage.



27-89



Victorian house with hipped iron roof and projecting gable on left side. Gable has finial, timber barge fret and a triangular bay with plaster mouldings over sash windows with louvred shutters. Quoins to corners, doors and windows. Verandah on plastered brick columns. 2 x 2 sashes. 4-panel door with side- and fanlights. Mesh fence with facebrick posts.

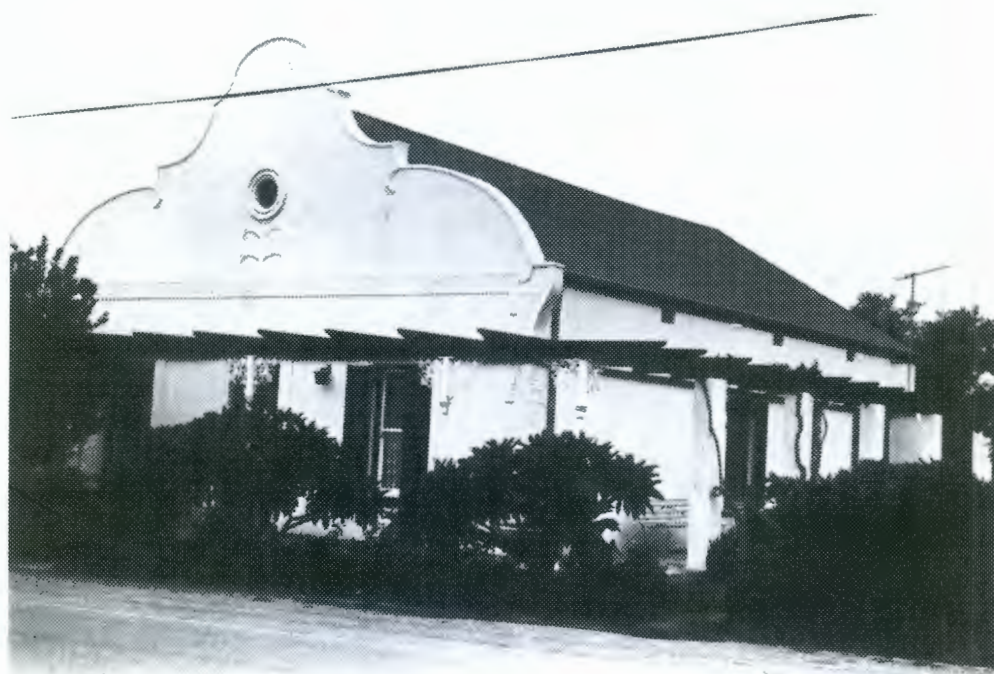
27-90



D.R. CHURCH HALL

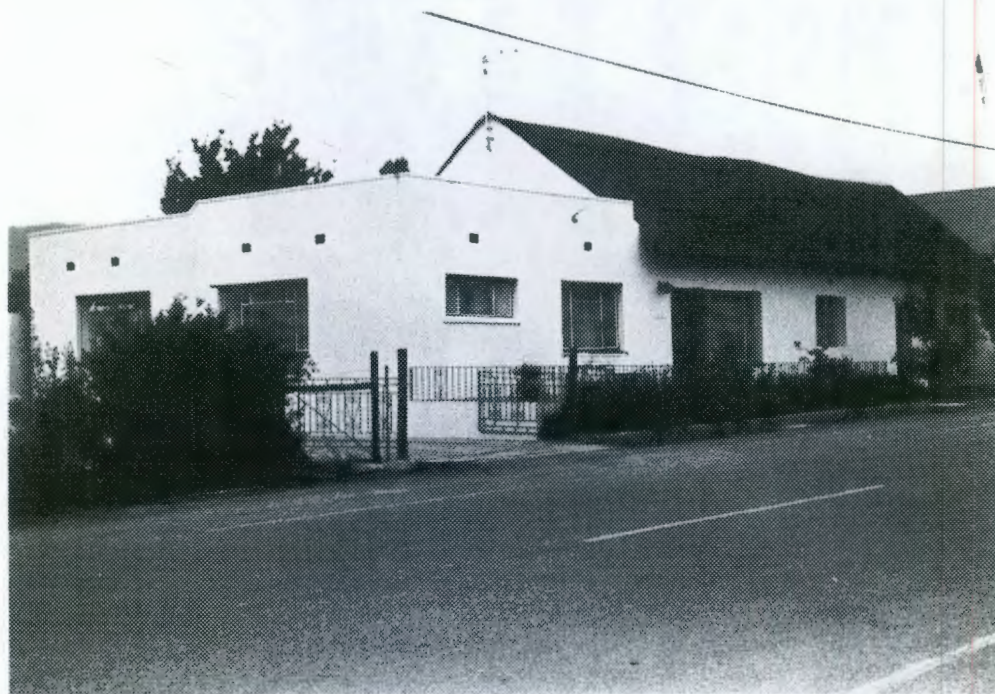
Hall with corrugated iron roof and turret ventilators, and Cape Dutch revival holbol end gable. End gable has two pilasters and loft window. 2 x 2 double doors with fnalight and 12 x 12 sashes with louvred half-shutters. Wooden casement windows to long facades. Recessed entry at left side.

27-91



Victorian house with corrugated iron roof. Cape Dutch revival holbol end gable towards street, with round vent with "sunflower" plaster moulding, and patterned string course. 2 x 2 sashes with louvred shutters. Pergola on cast iron columns and brackets, and plastered pillars. Patterned quoins to corners.

27-406

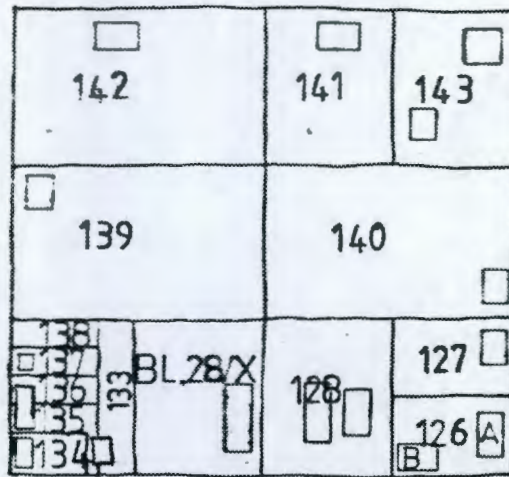


Cottage with fancy thatching and covered end gables. Parapeted extension on left. Steel windows.

VOORTREKKER STR.

HOF STR.

TYNDALL STR.



LONG STR.

McGREGOR  
BLOCK 28



28-126 A

Vernacular cottage with thatched roof and straight end gables. Loft door. Steel windows. Stable door.



28-126 B

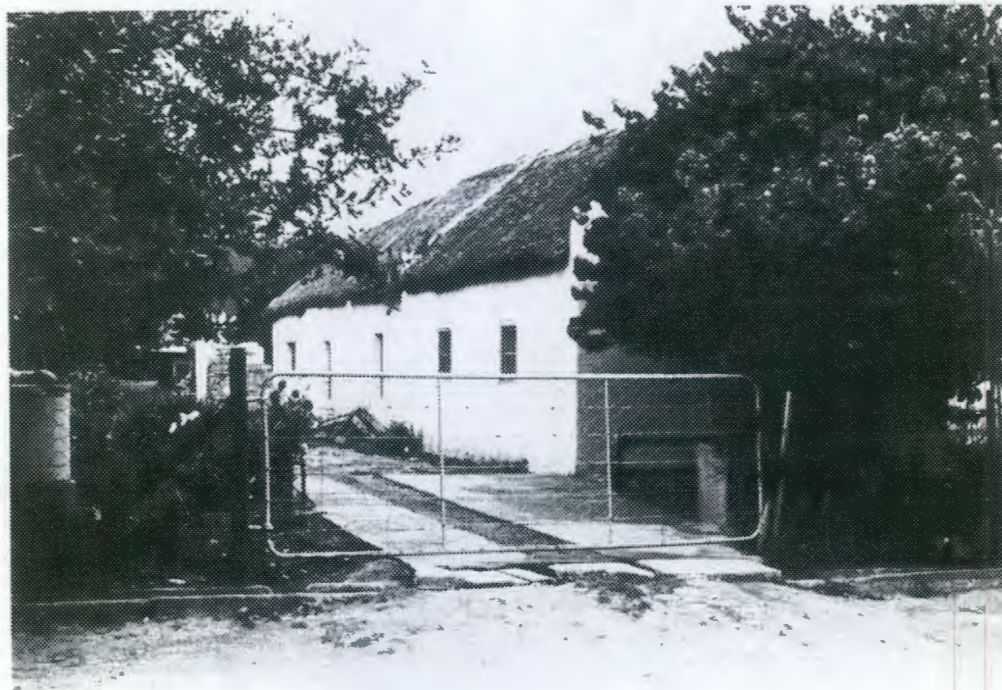


Vernacular cottage with reed thatch, straight end gables and internal brick chimney. 6 x 6 sashes.

28-128



Hall with corrugated asbestos roof and covered end gables. Porch with saddle roof. Industrial steel windows. Small building with triangular end gables, 2 x 2 double door with pointed-arch fanlight.



28-BL28/Y



Vernacular cottage with reed thatch and straight end gables. 4-pane casements and 6 x 6 sashes.



28-133/135



Vernacular cottage with thatched roof, straight end gables, loft door and off-centre external hearth with window.

28.134



Vernacular cottage with covered end gables, loft door and off-centre external chimney. Steel casements, modern half-glazed door.

28.135/136



Vernacular cottage with thatched roof and straight end gables. 4 x 4 wooden and steel windows. Door with 3-pane fanlight.

28-137



Cottage with monopitch corrugated iron roof and external chimney, Steel windows.



28-139



Vernacular cottage with thatched roof and straight end gables. Loft door and external chimney. 6 x 6 sashes.

28-142



McGREGOR CRAFT SHOP

Vernacular cottage with thatched roof and straight end gables. Loft door above parapeted extension. Rough plaster with smooth plaster corner, window and door quoins. 6 x 6 sashes, 4-panel doors with geometric fanlights and door with window panes. Hipped verandah on plastered columns.

28-141



Double storey Georgian style building with stepped-up parapet decorated with scrolls and cornice. Four blind windows on upper floor, and loft door on side. 6 x 6 sashes. Quoins to corners, windows and door. Single storey extension on left, with cornice. (Volkskas)

28·127



Vernacular cottage with stepped-up parapet, cornice and external chimney. Rough-plastered, with smooth plaster surrounds to openings. Stable door with 4-pane fanlight.

28·140



Cottage with asbestos saddle roof and external hearth. 4-panel door, steel windows.

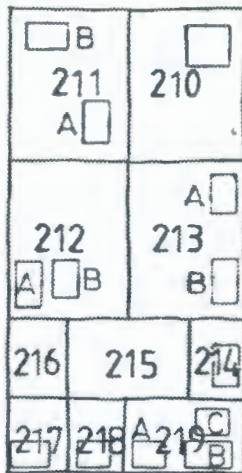


MCGREGOR BUTCHERY

Modern double storey building with parapet. Plastered, with ground floor facebrick. First floor has steel windows under concrete hood. Corner is curved. Cantilevered canopy over ground floor. Large sheet glass window, modern door. Recess at corner. House behind, with corrugated iron roof and steel windows.

VOORTREKKER STR.

HOF STR.



LOOP STR.

LONG STR.

### McGREGOR BLOCK 29

29-210



#### SERVICE STATION

Modern Service Station, parapeted and recessed on the corner for petrol pumps. Concrete canopy over pumps. Industrial steel windows.





29-211A

Outbuilding with corrugated iron saddle roof. Corrugated iron and wooden sliding doors.



29-211B

OVER DEN BERG MOTEL

Double storey building with hipped iron roof. Two projecting Cape Dutch revival gables. First floor balcony with precast panels in plastered balustrade, supported on precast columns. 2 x 2 double door with top panels arched, and fanlight. 3-panel doors with fanlights, steel casements. First floor probably later addition to older structure. Ground floor has textured quoins to corners and openings. Double doors to one gable. Casement windows.

29-212



Building with stepped-up parapet. Steel windows. Stable door, modern glazed door with wider 4-pane fanlight. Adjacent outbuilding with corrugated iron roof, straight end gables.

29-216



Vernacular cottage with reed thatch and straight end gables with external chimney. Stable door, steel casements.



29-217

Two attached vernacular cottages with thatched roofs and straight end gables. Hearth at party wall. Steel windows, 4-panel door. Small outbuilding with corrugated iron roof and steel windows.

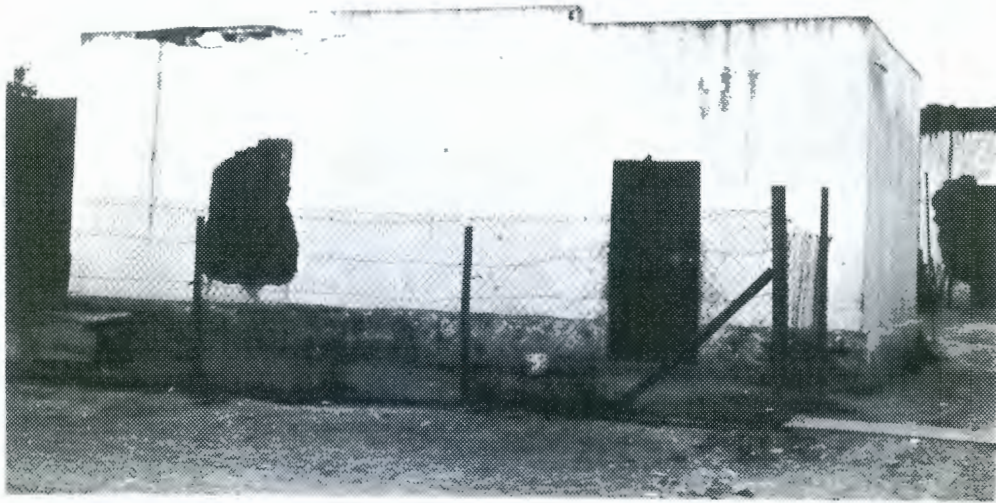


29-218

Vernacular cottage with thatched roof, 4-pane casements and stable door.



29-219A



Vernacular outbuilding with stepped-up parapet, partially ruined.

29-219 B



3-bay double storey building with parapet. Upper floor has 4-pane windows with sunrise fanlights, paired on the outer bays and separated by pilasters. Corresponding blind niches on side elevation. Columns inset at the corners. Ground floor has large arches over paired 2 x 2 sashes. Central arch has trefoil arch inset, over double doors with arched upper panels and fanlight (missing). Lower part of ground floor is coursed stonework. Right-side has projecting room with parapet, 2 x 2 sash and stable door with 4-pane fanlight. Left side has parapeted, single storey extension with 2 x 2 sashes.



29-219C



Hall with iron roof and triangular end gable facing street. Pediment in moulded plaster, dated 1899, with round cast iron vent and two ornate fleur de lis mouldings. Corner quoins and plaster surrounds to openings. 6 x 6 sashes, 3 x 3 panel doors with geometric fanlight. Geometric moulding over door. Stone plinth.



29-214



Thatched vernacular cottage with straight end gables. Stable door with 3-pane fanlight, with quoins and mouldings above of plaque and eaves. 6 x 6 sashes with quoins, and medallions above. Flanking door are plaster decorations of potplants. Plaque reads: "1895 - APB41"



29-213B

Vernacular double dwelling with reed thatch and straight end gables. External chimney. Steel windows. 4-panel door with upper panels glazed and stable doors with fanlights.

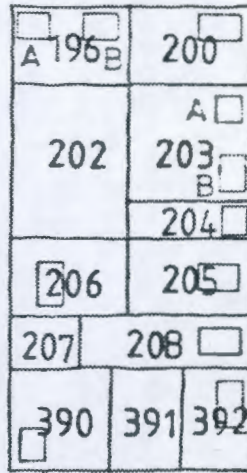


29-213A

Vernacular cottage with reed thatch and straight end gables. External chimney and loft door with ladder. Steel windows. 3-panel door with fanlight.

VOORTREKKER STR.

LOOP STR.



BARRY STR.

LONG STR.

McGREGOR  
BLOCK 30

30-196A



Outbuilding with stepped-up parapet. Double wooden and modern tip-up garage doors.

30-196 B



Victorian house with corrugated iron roof and straight end gables. Loft door. Verandah with fretted wooden freize and plastered pillars. 2 x 2 sashes with internal shutters and quins. 4-panel door with side- and fanlights.

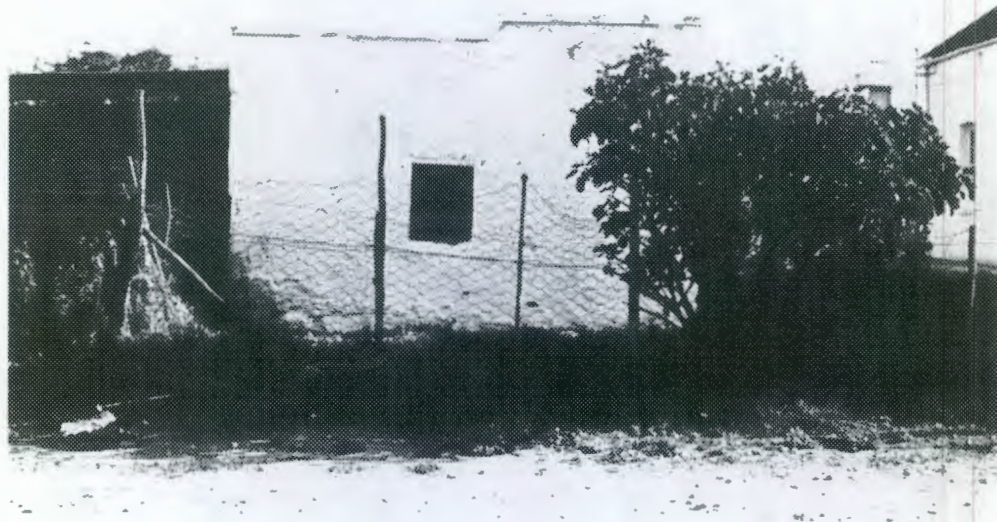
30-200



Victorian house with corrugated iron saddle roof and barge fret. Loft door and stair. Verandah on wooden columns and brackets, with drip fret. Quins to corners and openings. 2 x 2 panel double door with fanlight, 6 x 6 sashes.



30-203 A



Vernacular outbuilding with stepped-up parapet.

30-203 B



House with monopitch iron roof and external chimney with stone and brick top. 2 x 2 wooden casements; modern door with fanlight.

30·204



Vernacular cottage with thatched roof and straight end gables. 4 x 4 panel doors with lowest mouldings missing. 6-pane casements. Plaster surrounds to openings. Stone stoep with one end wall with low seat.

30·205

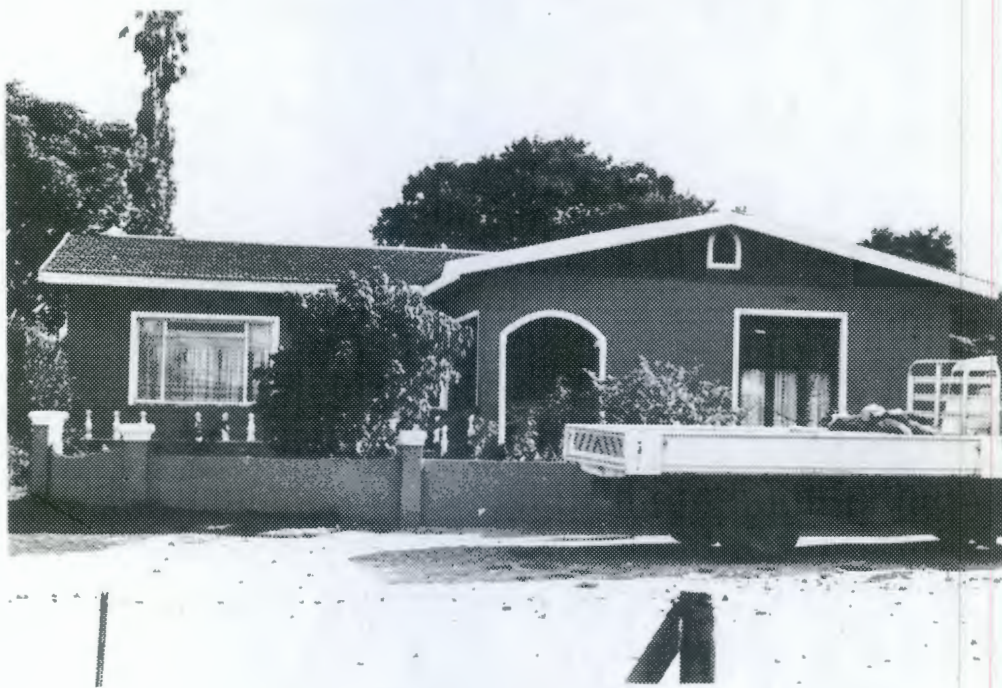


House with low-pitch corrugated iron saddle roof with covered end gable facing street. Loft window (boarded up), plain door and external chimney on gable end.



30-208

Building with corrugated iron roof with covered gable facing street. Extension with stepped-up parapet and central arch, dated 1935. 6 x 6 sashes, two external chimneys on long side.



30-392

Modern house with tiled roof, with slasto facing on covered gable. Steel windows, portholes, wooden casements, all with plaster surrounds. Recessed porch.



30-390



House with corrugated iron roof and projecting straight gable with plaster mouldings, quoins and round cast iron vent. Cast iron vents under eaves. IBR verandah on plastered columns. 6 x 6 sashes. Quoins to openings.

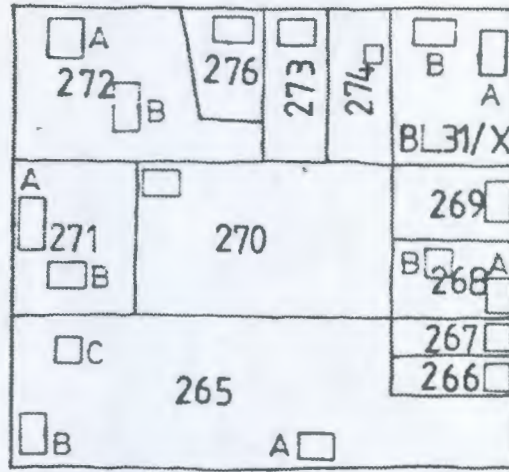


30-206



House with corrugated iron roof and projecting Cape Dutch revival gable, dated 1935. Verandah on plastered columns. 6 x 6 sashes with louvred shutters.

VOORTREKKER STR.



KEEROM STR.

BARRY STR.

LONG STR.

### McGREGOR BLOCK 31

31-265A



Vernacular cottage with reed thatch, straight end gables and external chimney. 4-pane casements and plain door.



31-265 B

Cottage with monopitch corrugated iron roof with overhang. Stable door, steel windows and internal chimney.



31-265C

Building with iron saddle roof with covered end gable towards street. Panelled French doors under concrete porch with facebrick pillars, flanked by steel windows. Facebrick front wall.

31:266



Vernacular cottage with reed thatch, straight end gables and 6 x 6 casement, with an extension at the gable end with stepped-up parapet and steel windows.



31:267



Vernacular cottage with reed thatch, straight end gables and 6-pane casement.



31-268A



Vernacular cottage with reed thatch, straight end gables and external chimney with small window. 6 x 6 sashes, stable door with 3-pane fanlight



31-268B



Vernacular cottage with reed thatch, straight end gables and external chimneys. Panelled door, 6 x 6 sash.



31-269



Vernacular cottage with reed thatch, straight end gables and internal chimney. Steel windows, door with 3-pane fanlight.



31-BL.31/X

A



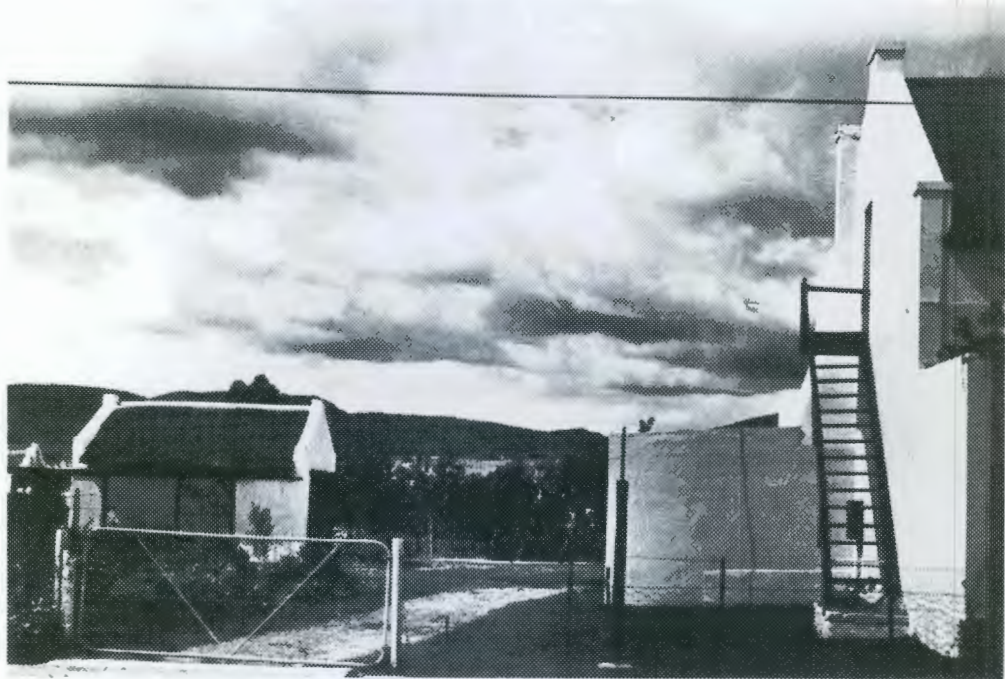
Vernacular cottage with reed thatch, hooded gable over door and straight end gables. External chimney. Stable door. Windows with solid shutters.



31·BL.31/X  
B



Vernacular cottage with reed thatch, straight end gables and external chimney.  
Loft door and door in gable end.



31·274

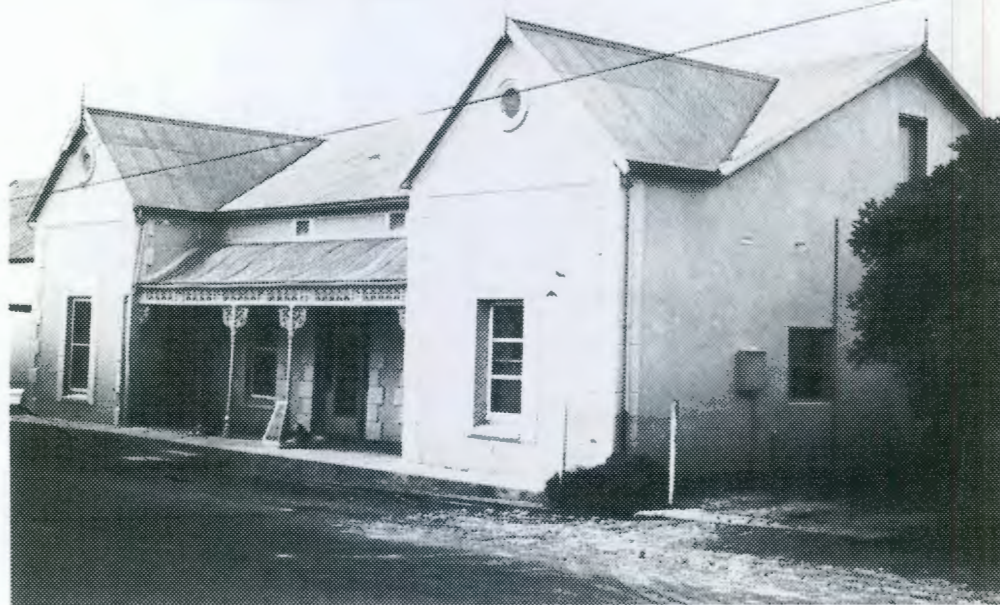
Vernacular outbuilding with thatched roof, straight end gables and wooden  
garage doors.

31-273



Cottage with corrugated iron roof, straight end gables, external chimney and loft door with staircase. 6 x 6 sashes. Pergola on plastered columns.

31-276



Victorian house with cast-iron roof and two projecting covered gables. All gables have finials, one has additional barge fret. Gables have round vents. Square vents under eaves. Quoins to corners and openings. 2 x 2 sashes with external sliding screens. 4-panel door with side- and fanlights.

31-271A



Vernacular cottage with reed thatch, straight end gables and external chimney.

31-271B



Vernacular cottage with corrugated iron roof, straight end gables and external chimney. Small casement windows.

31-272 A



McGREGOR SUPERMARKET

Modern supermarket with concrete porch, cladding and modern shopfronts.

31-272 B

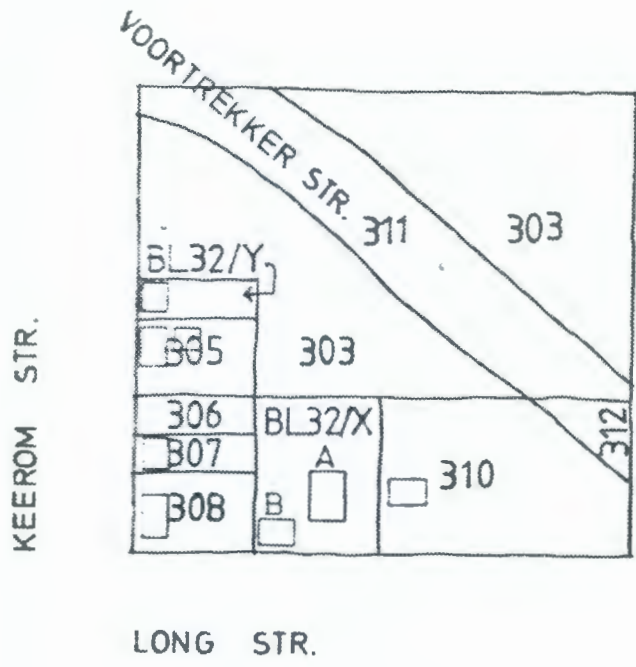


Modern shed with IBR saddle roof. Industrial steel windows.

31-270



Cottage with corrugated iron roof, straight end gables and 6-pane casement to loft.



McGREGOR  
BLOCK 32

32-BL.32Y



Cottage with monopitch corrugated iron roof with overhang. Steel windows, modern door.

32-305



Vernacular cottage with reed thatch, straight end gables and external chimney. Steel windows.

32-307



Vernacular cottage with stepped-up parapet and external chimney. Stable door. No windows on street side.

32-308



Vernacular cottage with reed thatch and straight end gables. Thatched room added longitudinally. Rooms built on in front with asbestos roof and steel windows.



32-BL.32/X  
A

NEW APOSTOLIC CHURCH

Facebrick church with asbestos saddle roof and projecting wing. Steel windows with arched tops, wooden double doors.



32-BL32/X  
B

Modern house with asbestos saddle roof, steel windows and modern glazed door.



32-310

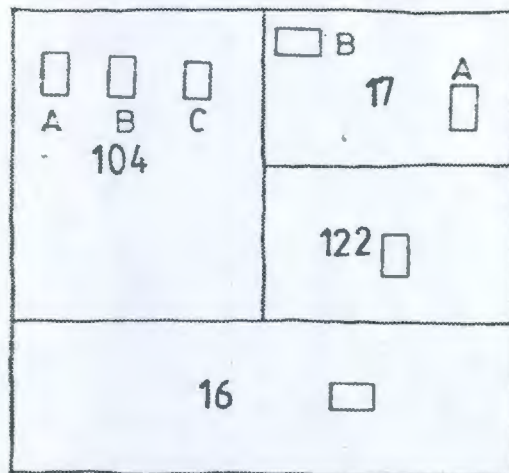


Vernacular cottage with thatched roof and straight end gables. 2 x 2 sashes, 4-panel door.



LONG STR.

VANRENEN STR.



BUITENKANT STR.

McGREGOR  
BLOCK 33



33-17A



Victorian house with hipped iron roof and gables on two facades, with the roofs extending out over triangular bays. The bays have cast iron barge fret, louvred vents with triangular tops and plaster razorblade mouldings. 2 x 2 sashes with louvred shutters. Concavo/convex verandah between gables, with wooden freize and cast iron columns and brackets. Front door with side and fanlights, French doors with coloured glass. 2 x 2 sashes with internal shutters and quoins. Vibracrete boundary wall.

33-17 B



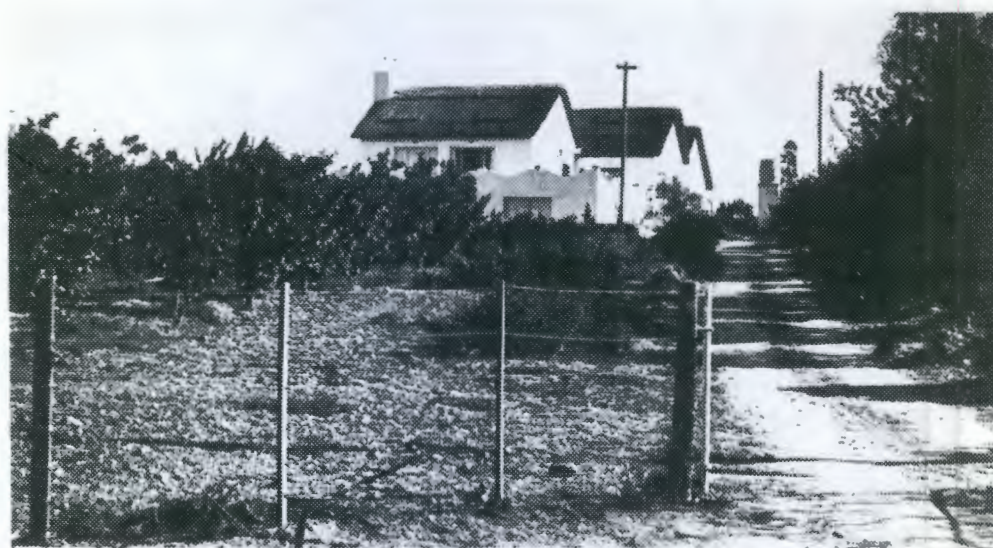
Double garage with stepped-up parapet, 6 x 6 sash and tip-up garage doors.



33-122

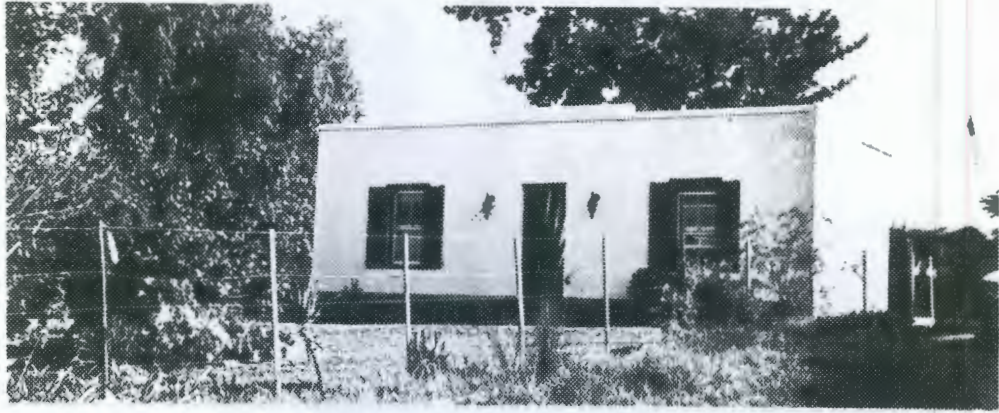


Double storey 3-bay Georgian house with stepped-up parapet. Two blind windows on first floor. 6 x 6 sashes. Panelled double door with fanlight. Loft door and stair.



33-16

House with composed of three thatched cottages with covered end gables and fancy thatching, plus a room under the terrace, with dipped balustrade/parapet. Steel windows.



33-104 A

Vernacular cottage with stepped-up parapet. Stable door, 2 x 2 sashes with louvered shutters.



33-104 B

Vernacular outbuilding with reed thatch, triangular end gables and loft door. Gable wall is partly exposed random stonework.

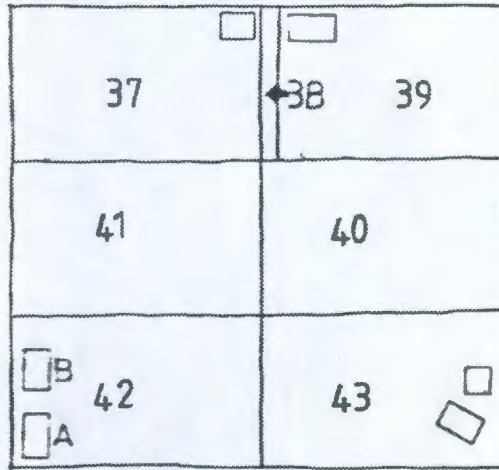


33-104 C

Parapeted outbuilding with small window and corrugated iron garage doors.

LONG STR.

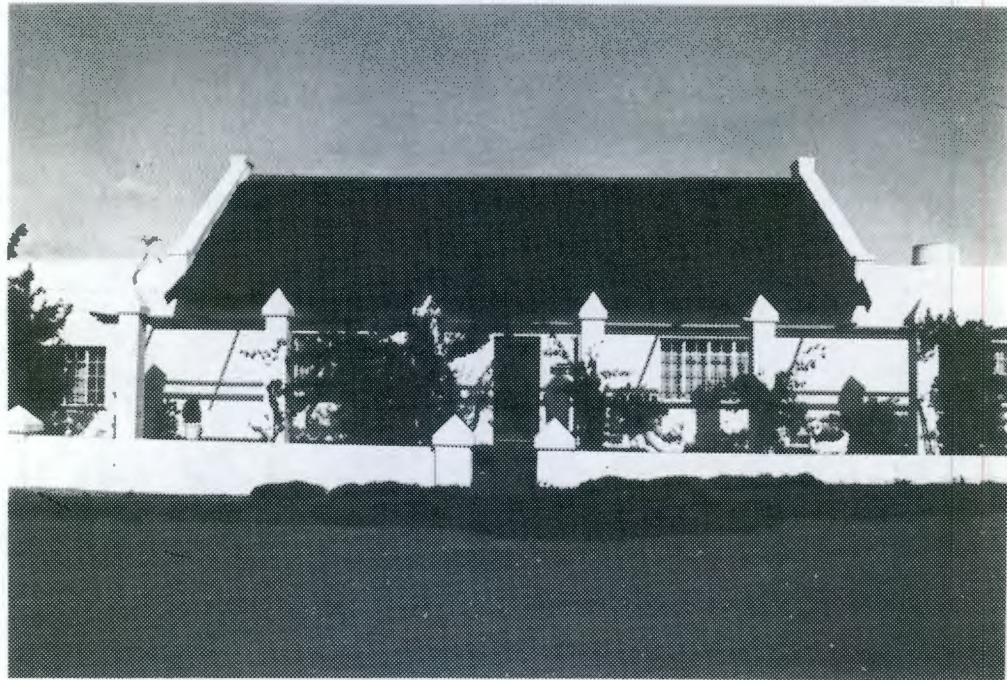
VAN RENEN STR.



BREE STR.

BUITENKANT STR.

### McGREGOR BLOCK 34



34-39

Cottage with fancy thatching, wide eaves, straight end gables and parapeted extension on both sides. Steel windows, modern glazed door. Pergola on plastered pillars with triangular caps. Low boundary wall with capped posts. Modern outbuildings on adjacent erf 37.

34·42A



Cottage with corrugated iron roof and straight end gables. Steel windows, modern glazed door.

34·42B



House with hipped iron roof with a covered gable with loft door on the side. Steel windows, modern door.

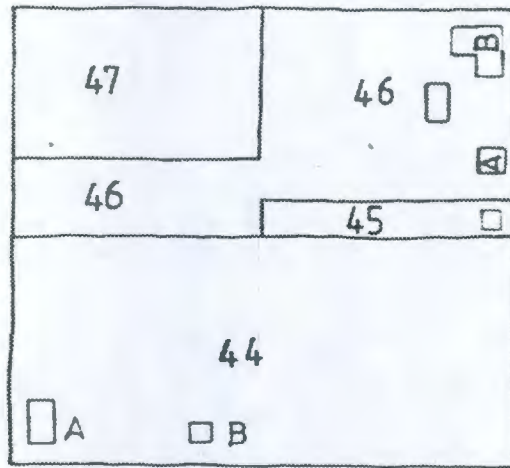
34·43



A-frame house with wooden cladding to upper floor. Steel windows, stable door. Carport with low-pitch corrugated iron saddle roof.

LONG STR.

BREË STR.



KERK STR.

BUITENKANT STR.

McGREGOR  
BLOCK 35



35-45

Cottage with corrugated iron saddle roof and covered end gables. External chimney at rear. 6 x 6 sashes and modern door with quins. Pergola on plastered columns.

35.44 A



Vernacular cottage with fancy thatching, straight end gables and internal chimney. 12-pane casements and 4-pane door with 4-pane fanlight. Extension with lower thatched roof and straight end gable.

35-44B



Parapeted, vernacular outbuilding.



35-46A

Vernacular outbuilding with corrugated iron roof, straight end gables and corrugated iron door. Small windows, boarded up.





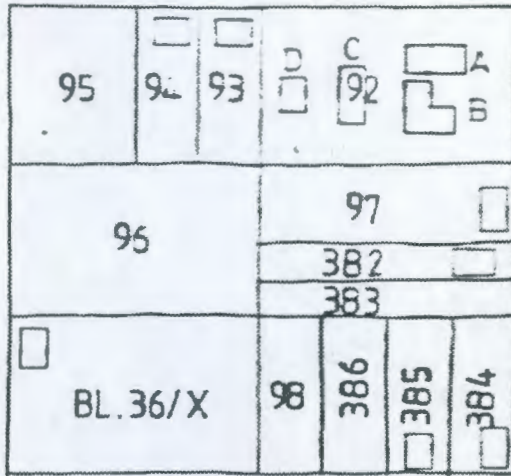
Three vernacular cottages. Two with thatched roofs and straight end gables. Corner cottage has external chimney and loft door. 12-pane casements with plaster surrounds. Modern door with glazing with thatched hood over. Parapeted lean-to at rear with 6 x 6 sash.



Third cottage has rounded triangular end gables with loft door and vent, and corrugated iron roof. Modern wooden casements. Parapeted lean-to. Cottages connected by whitewashed walls.

LONG STR.

KERK STR.



TYNDALL STR.

BUITENKANT STR.

McGREGOR  
BLOCK 36



36.92A



Thatched church with triangular end gables. 20-pane windows with pointed arches. Double wooden doors in gable end with quoins and pointed arch fanlight.

36.92 B



L-shaped, thatched building with one straight end gable and one Cape Dutch revival gable, dated 1930, with arched, louvred vent. 6 x 6 sashes with plaster surrounds. Panelled double door with fanlight.

36.92 C



Classroom block with corrugated iron roof and covered end gables, with roof extended over verandah on one side. High steel windows and 2 x 2 double doors.

36.92D



Cottage with monopitch roof with overhang, and two external chimneys. Steel windows, recessed entry.

36.93



Vernacular cottage with reed thatch, straight end gables and hooded gable above door. External chimney and oven. 12-pane casements, door with fanlight and exposed wooden lintol.

36.94



Vernacular cottage with thatched roof, straight end gables and loft door. 6 X 6 sashes with louvred shutters, 4-panel door with fanlight. Extension with fancy stepped-up parapet.

36.BL.36X



Vernacular cottage with reed thatch, straight end gables and external chimney with small window. Stable door, 6 x 6 sash and small steel casement.

36-385



Modern house with asbestos saddle roof with covered end gables, recessed porch and steel windows. External chimney with inset slate.

36-384



Vernacular cottage with reed thatch, straight end gables and external chimney with small window. 8 x 8 casement and steel window; stable door. Extension at rear with monopitch roof and steel windows.

36-382



Modern house with low-pitch saddle roof and corrugated cladding on front covered gable. Recessed verandah. Modern wooden casements and front door.

36-97

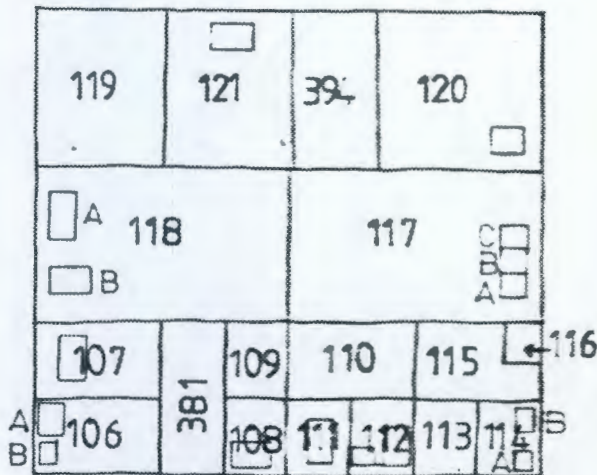


Vernacular cottage with thatched roof and straight end gables. Extension in front with two Cape Dutch revival gables with large plaster medallions and castellated parapet behind. Corrugated iron roof between. 6 x 6 sashes with quoins.

LONG STR.

TYNDALL STR.

HOF STR.



BUITENKANT STR.

# McGREGOR BLOCK 37

37-107



House with thatched roof and straight end gables, with holbol front gable and 12-pane loft window. 2 x 2 sashes. Panelled door with geometric fan=light. Steep with curved end walls and gumpole pergola on plaster columns. Pergola over path. Low plastered wall with posts.



37-106 A



Vernacular cottage with parapet. 2 x 2 sashes with louvred shutters. Door with geometric glazing and 3-pane fanlight.

37-106 B



Vernacular cottage with reed thatch, triangular end gables and external chimney. 4-pane and single-pane casements.

37-108



Vernacular cottage with reed thatch and straight end gables. Steel windows. Extension with stepped-up parapet and recessed verandah with arched openings.

37-111



Vernacular cottage with reed thatch, triangular end gables and external chimney. Stable door and small casement. Small extension with stepped-up parapet.

37-112



Two vernacular cottages with thatch and straight end gables, with parapeted connection. Stable doors, small casement.

37-114A



Vernacular cottage with reed thatch and straight end gables. Stable door with 4-pane fanlight. 4-pane casements.

37-114 B



Vernacular cottage with reed thatch, straight end gables and loft door. Small casements.

37-117



Row of three attached cottages with thatched roofs. 'A' has a straight end gables, loft door with ladder and external chimney with small window. Steel windows, door with 4-pane casement. 'B' has a 6 x 6 sash. 'C' has a hipped, thatched roof, steel window and door with geometric glazing.

37-120



Vernacular cottage with reed thatch, straight end gables and external chimney. 6-pane and steel casement. Stable door.

37-118A



Vernacular cottage with thatched roof and straight end gables. Parapeted extension with chimney. Wooden casements.

37-118B



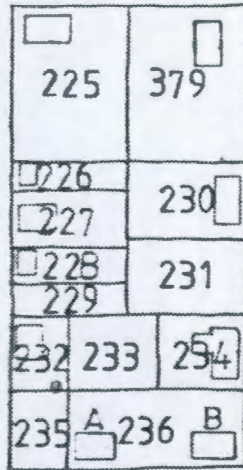
Thatched cottage with round-topped end gable and off-centre loft door. 6 x 6 and 4-pane casements and doors, all with exposed wooden lintols.

37-121



Modernised thatched cottage with straight end gables and external chimney. Steel windows, glazed door with sidelights.

LONG STR.



LOOP STR.

HOF STR.

BUITENKANT STR.

### McGREGOR BLOCK 38

38-225



Semi-detached cottages with stepped-up parapet and cornice. 2 x 2 and 1 x 1 sashes and 6-pane casement. Stable doors.

38-226



Vernacular cottage with reed thatch, straight end gables and external chimney. 6 x 6 sashes, wide 4-panel door with 3-panel fanlight.

38-227



Vernacular cottage with thatched roof and straight end gable facing the street. Gable is bagged brick, with plaster surrounds to 12-pane windows and 4-pane door.



38-228



Vernacular cottage with reed thatch, straight end gables and external chimney. Steel casement and stable door with plaster surrounds. Plastered wall with capped posts.

38-232



Modernized vernacular cottage with corrugated iron roof, triangular end gables and external chimney. Steel windows, stable door.

38-236A



Semi-detached cottages with parapet and cornice. 6-pane casements, stable doors with 3-pane fanlights.

38-236 B



Vernacular cottage with parapet and cornice. Steel windows. 2 x 2 panelled stable door with 3-pane fanlight.



Semi-detached cottages. The one on the left has a thatched roof, straight end gables and external chimney. Modern wooden windows and stable door.



The one on the right is smaller, with straight end gable and reed thatch. Small 4-pane casements, stable door.

38-230



Row of parapeted cottages with two chimneys. 6-pane casements, four stable doors.

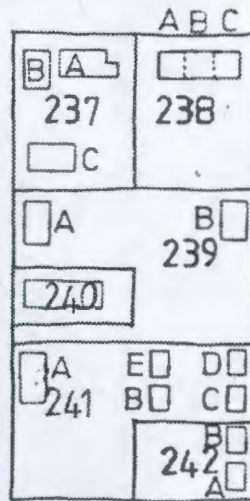
38-379



BUSY CORNER CAFE  
House with parapeted roof with exposed rafter-ends. Modern windows and door.  
Wall with capped posts.

LONG STR.

LOOP STR.



BARRY STR.

BUITENKANT STR.

# McGREGOR BLOCK 39

39-238 A

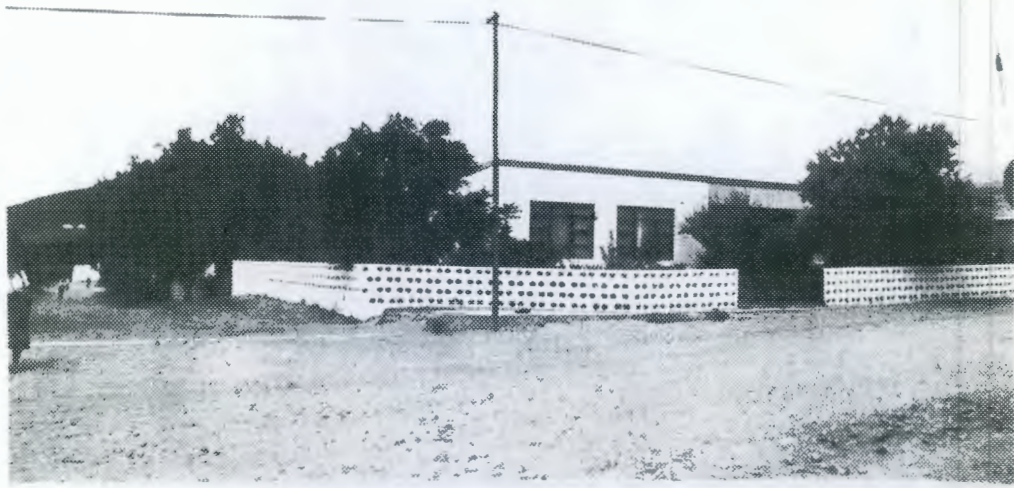


## CASH STORE

Semi-detached shop with monopitch IBR roof. Modern shopfronts and signage.

39-238

B/C



Modern house attached to shop, with monopitch IBR roof. Recessed porch with IBR cladding. Modern stable door with sidelights and wooden windows.

39-237 A



Modern house with monopitch IBR roof, textured plaster and recessed porch. Attached garages roughly built of concrete blocks.

39-237B



Cottage with corrugated iron roof, covered end gables and external chimney. 12-pane casement, stable door.



39-237C



Vernacular cottage with thatched roof, straight end gables and external chimney with small window. Loft door. Wooden casements.



39-239A



Semi-detached vernacular cottages with thatch and straight end gables. 12-pane casements.



39-239B



Vernacular cottage with reed thatch, triangular end gables and external chimney. 6-pane casements.

39-240



Vernacular cottage with reed thatch, straight end gables and external chimney. Stable doors, small casements.

39-241A



Vernacular cottage in three sections, with reed thatch and straight end gables. 6 x 6 sash, 6-pane casement and steel windows.





39-241 B



Vernacular cottage with reed thatch, straight end gables and two external chimneys. 6-pane casements, stable doors.

39-241 C



Vernacular cottage with thatched roof, straight end gables and external chimneys. Steel windows with painted quoins. Glazed door.

39-241 D



Vernacular cottage with reed thatch, straight end gables and external chimneys. 6 x 6 sashes, glazed and stable doors. Wall with posts and dipped panels.



39-241E

Vernacular cottage with reed thatch, straight end gables and external chimneys. Glazed and stable doors. Small casements.



39-242A

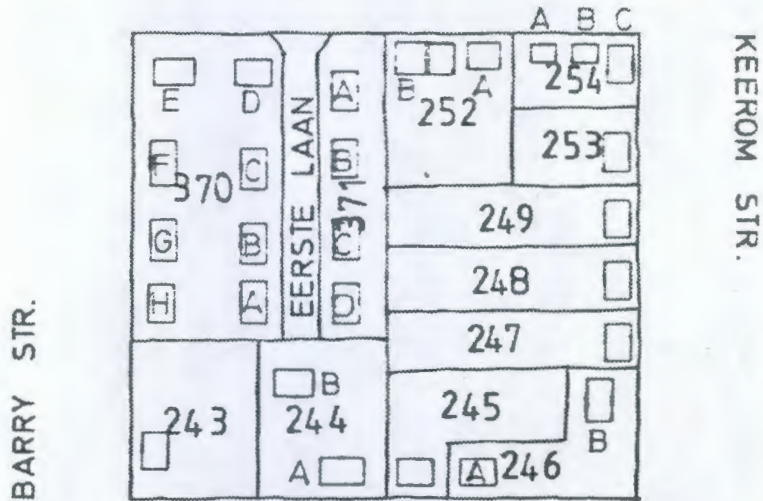
Vernacular cottage with reed thatch, straight end gables and internal chimney. Low hood over stable door. Small casement.



39-242B

Vernacular cottage with reed thatch and straight end gables. 6-pane casements with internal shutters. Glazed Edwardian door. Dated 1940.

LONG STR.



BUITENKANT STR.

### McGREGOR BLOCK 40

40-370/371

TYPICAL



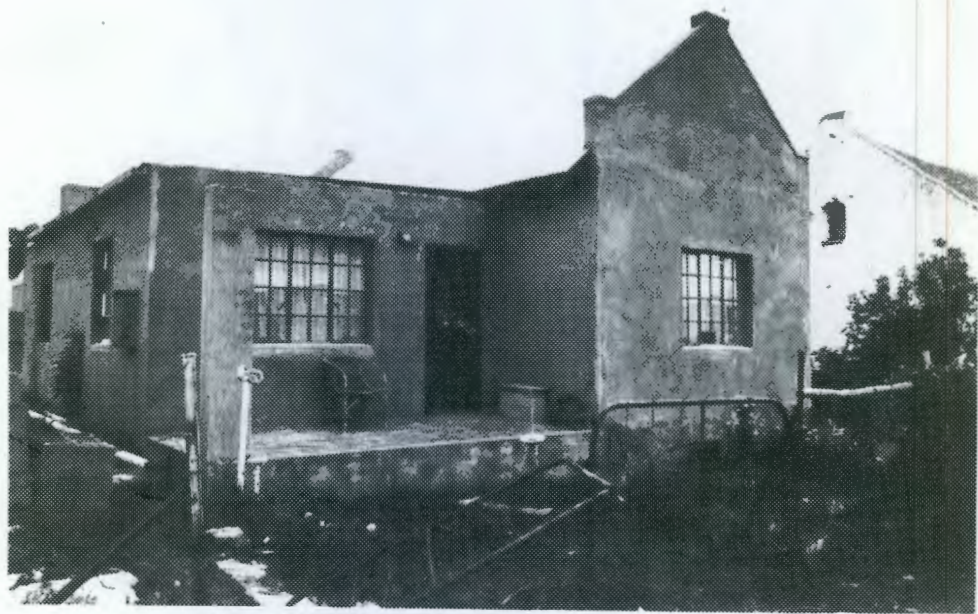
Housing scheme with 4 semi-detached houses on erf 371 and 8 on erf 370. Houses are painted facebrick with asbestos saddle roofs, steel 6-pane combination casements and modern doors.

40.243



Modern house with monopitch roof, steel windows and modern stable door.

40.244A



Recently renovated, L-shaped house with corrugated iron saddle roof with straight end gables, and monopitch corrugated iron roof. Steel small-pane windows, stable door. Front stoep.

40-244B



Vernacular cottage with reed thatch, straight end gables and external chimney. Steel windows, 3-panel Edwardian door with 2-pane fanlight.

40-245



Vernacular cottage with reed thatch, straight end gables and external chimney. 12-pane casements. Small-pane glazed door.

40-246A



Vernacular cottage with reed thatch, straight end gables and external chimney. Loft door. 6-pane casements. Door with 3-pane fanlight.

40-246B



Semi-ruined cottage with corrugated iron monopitch roof. One 4-pane casement - door and other window missing.

40-247



Vernacular cottage with thatched roof and straight end gables. Stable door, wooden small-pane casements.

40-248



Vernacular cottage with thatched roof, straight end gables and parapeted extension on left. Large, modern wooden window. Low boundary wall with cast iron cresting.

40-249



Vernacular cottage with thatched roof and straight end gables. Modern windows with inclined sides.

40-253



Vernacular cottage with thatched roof, straight end gables and external chimney. Casement windows.



40-254 A



Cottage with hipped, thatched roof. Steel windows.

40-254 B



Garage with stepped-up parapet and wooden sliding door.

40-254 C



Modern house, presently being built (1986), with a saddle roof and modern wooden windows.

40-252A



Modern house with parapet, steel windows and glazed door.



40-252B



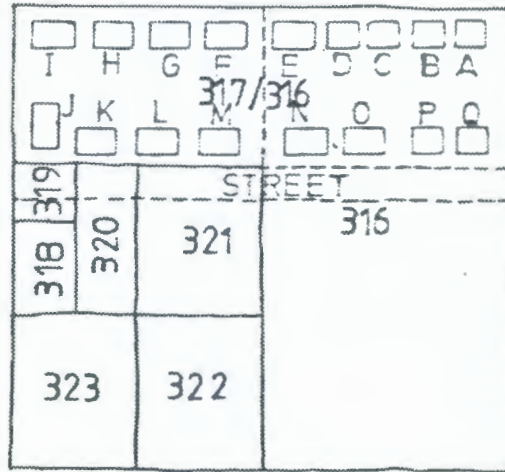
Two adjacent cottages. The one on the right has a thatched roof and straight end gables. Wooden casements with plaster surrounds. Quoins to panelled door and corners. The one on the left has end gables with round tops and plaster mouldings.

LONG STR.

KEEROM STR.

LADY GREY LN.

← BUITENKANT STR.



### McGREGOR BLOCK 41



41-316/317  
TYPICAL

Housing scheme consisting of detached and semi-detached thatched cottages in the "McGregor style". They have straight end gables and external chimneys, and wide eaves with exposed rafters. Composite 6-pane wooden casements; stable doors. Stoeps enclosed with low, plastered walls.

34

BREE STR.

BL. 35

KERK STR.

BL. 36

BL. 39

BARRY STR.

BL. 40

KEEROM STR.

BUITENKANT STR.



A



B



C



McGREGOR  
BLOCK 42

42·A



Small cottage with asbestos saddle roof, external chimney and steel windows.



42·B

House with reed thatch, straight end gables, an external chimney and a parapeted extension with corrugated iron roof. 6-pane casements and 8-pane top-hung windows.



42·C

House with corrugated iron roof, straight end gables and external chimney. Wooden casements.