

A-Thermal Retort Technologies Plant Upgrade Project

City of Tshwane Metropolitan Municipality, Gauteng Province

Farm: Portion of Olifantsfontein 410-JR

Fourie, H. Dr heidicindy@yahoo.com

[012 322 7632/012 942 0110 x 1057](tel:01232276320129420110x1057)

Palaeontological Impact Assessment: Phase 1 Field Study

Commissioned by: Exigo Sustainability (Pty) Ltd

Postnet Suite 74, Private Bag X07,

Arcadia,

0007

012 751 2160

Ref: Pending

2020/02/24



B. Executive summary

Outline of the development project: Exigo Sustainability (Pty) Ltd has facilitated the appointment of Dr H. Fourie, a palaeontologist, to undertake a Palaeontological Impact Assessment (PIA), Phase 1 Field Study of the A-Thermal Retort Technologies Plant Upgrade Project on the Farm Olifantsfontein 410-JR in the City of Tshwane Metropolitan Municipality, Gauteng Province.

The applicant, A-Thermal Retort Technologies will upgrade their existing plant in Clayville.

The Project includes one Alternative (Figure 1):

Alternative 1: An area blocked in red with Keramiek Street to the west, the factory to the east, an undeveloped area to the north, and an existing factory and Porcelain Road to the south. The size of the site is approximately 2.5 hectares in size.

Legal requirements:-

The **National Heritage Resources Act (Act No. 25 of 1999) (NHRA)** requires that all heritage resources, that is, all places or objects of aesthetic, architectural, historical, scientific, social, spiritual, linguistic or technological value or significance are protected. The Republic of South Africa (RSA) has a remarkably rich fossil record that stretches back in time for some 3.5 billion years and must be protected for its scientific value. Fossil heritage of national and international significance is found within all provinces of the RSA. South Africa's unique and non-renewable palaeontological heritage is protected in terms of the National Heritage Resources Act. According to this act, palaeontological resources may not be excavated, damaged, destroyed or otherwise impacted by any development without prior assessment and without a permit from the relevant heritage resources authority.

The main aim of the assessment process is to document resources in the development area and identify both the negative and positive impacts that the development brings to the receiving environment. The PIA therefore identifies palaeontological resources in the area to be developed and makes recommendations for protection or mitigation of these resources.

For this study, resources such as geological maps, scientific literature, institutional fossil collections, satellite images, aerial maps and topographical maps were used. It provides an assessment of the observed or inferred palaeontological heritage within the study area, with recommendations (if any) for further specialist palaeontological input where this is considered necessary.

A Palaeontological Impact Assessment is generally warranted where rock units of **LOW to VERY HIGH** palaeontological sensitivity are concerned, levels of bedrock exposure within the study area are adequate; large scale projects with high potential heritage impact are planned; and where the distribution and nature of fossil remains in the proposed area is unknown. The specialist will inform whether further monitoring and mitigation are necessary.

Types and ranges of heritage resources as outlined in Section 3 of the National Heritage Resources Act (Act No.25 of 1999):

(i) (i) objects recovered from the soil or waters of South Africa, including archaeological and palaeontological objects and material, meteorites and rare geological specimens.

This report adheres to the guidelines of Section 38 (1) of the National Heritage Resources Act (Act No. 25 of 1999).

Subject to the provisions of subsections (7), (8) and (9), any person who intends to undertake a development categorised as (a) the construction of a road, wall, power line, pipeline, canal or other similar form of linear development or barrier exceeding 300 m in length; (b) the construction of a bridge or similar structure exceeding

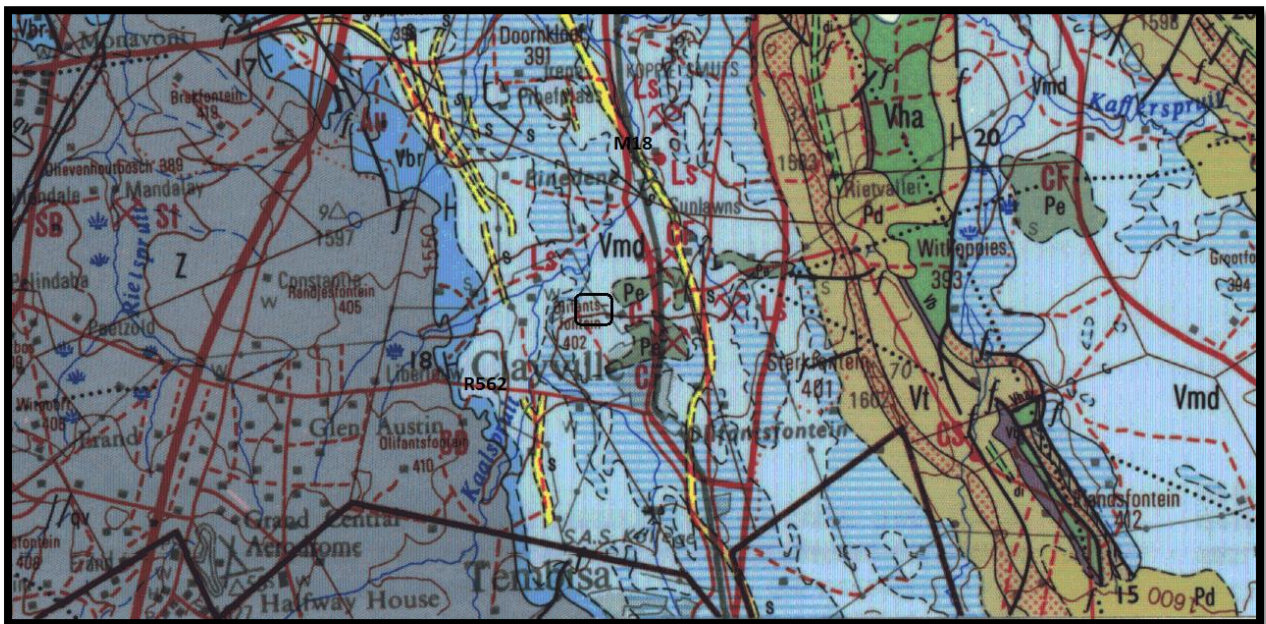
50 m in length; (c) any development or other activity which will change the character of a site (see Section 38); (d) the re-zoning of a site exceeding 10 000 m² in extent; (e) or any other category of development provided for in regulations by SAHRA or a PHRA authority.

This report aims to provide comment and recommendations on the potential impacts that the proposed development project / mining (if applicable) could have on the fossil heritage of the area and to state if any mitigation or conservation measures are necessary.

Outline of the geology and the palaeontology:

The geology was obtained from map 1:100 000, Geology of the Republic of South Africa (Visser 1984) and 1:250 000, 2528 Pretoria (Walrafen 1978).

Figure 3: The geology of the development area.



Legend to map and short explanation.

- Pe – (grey) Sandstone, shaly sandstone, grit, shale, conglomerate and coal near base and top. Vryheid Formation, Ecca Group, Karoo Supergroup. Permian.
- Vmd – Dolomite, chert [=] (blue), Malmani Subgroup, Chuniespoort Group, Transvaal Supergroup. Vaalian.
- (blue) Lineament (Landsat, aeromagnetic).
- - Concealed geological boundary.
- ⊥30 – Strike and dip of bed.
- – Proposed development (blocked in black).

The Chuniespoort Group is made up of chemical and biochemical sediments such as dolomite, chert, limestone and banded iron formation, carbonaceous shale is also present. At the top of the Malmani Subgroup is the Deutschland Formation underlain by the Penge and Monte Christo Formations. Sandstone is mostly absent. It is this formation that has great economic value for its lead, zinc, dolomite, and manganese (Kent 1980, Snyman 1996). Fluorspar, concrete aggregate, iron ore and manganese are also mined from this formation. Cave formation in the dolomite is a major concern in developing areas, especially in the 1500m thick dolomite of the Malmani Subgroup. Chemical sediments such as fine-grained limestone and dolomite is made up of deposits of organically derived carbonate shells, particles or precipitate. Dolomite is magnesium-rich limestone formed from algal beds and stromatolites. The Black Reef Formation is known for stromatolite carbonates and fossiliferous Late Cenozoic cave breccias similar to the Malmani dolomite.

Palaeontology - Fossils in South Africa mainly occur in rocks of sedimentary nature and not in rocks from igneous or metamorphic nature. Therefore, if there is the presence of Karoo Supergroup strata the palaeontological sensitivity can generally be **LOW** to **VERY HIGH**, and here locally **HIGH** for the Malmani Subgroup (SG 2.2 SAHRA APMHOB, 2012).

Chemical sediments such as fine-grained limestone and dolomite of the Malmani Subgroup is made up of deposits of organically derived carbonate shells, particles or precipitate. Dolomite is magnesium-rich limestone formed from algal beds and stromatolites. These Early Proterozoic Transvaal stromatolitic dolomites formed and released free oxygen at around 2900 – 2400 Ma. Stromatolites are common in the Malmani dolomites, accepted to be the fossil remnants of the simplest single-celled organisms. They are finely layered, concentric, mound-like structures formed by microscopic algal organisms (Norman and Whitfield 2006). Chert may contain fossils such as echinoids or sponges if nodular, although not common and is rated unlikely.

Summary of findings (1d): The Phase 1 Palaeontological Impact Assessment: Field Study was undertaken in February 2020 in the summer in mild and dry conditions and the following is reported:

Field observation – The area is accessible, but parts of it has lush grass which makes seeing outcrops difficult. There is a dam, animal shelters, lapa, and trees on site. Outcrops are present in the form of chert blocks.

The Project includes one Alternative (Figure 1):

Alternative 1: An area blocked in red with Keramiek Street to the west, the factory to the east, an undeveloped area to the north, and an existing factory and Porcelain Road to the south. The size of the site is approximately 2.5 hectares in size.

The only Alternative presented is situated on the Malmani Subgroup rocks with the Vryheid formation to the east. All Alternatives in the area will be situated on the same rocks, therefore not feasible. Fossils were not found during the walk through.

Recommendation:

The potential impact of the development on fossil heritage is **VERY HIGH** for the Vryheid Formation to the east and **HIGH** for the Malmani Subgroup and therefore a field survey was necessary for this development (according to SAHRA protocol). A Phase 2 PIA and or mitigation are generally only recommended if the Phase 1: Field Study finds fossils or fossils are found during construction excavations and blasting (plants).

Concerns/threats (**1g,1ni,1nii,1o,1p**) to be added to the EMPr:

1. Threats are earth moving equipment/machinery (for example haul trucks, front end loaders, excavators, graders, dozers) during construction, the sealing-in or destruction of the fossils by development, vehicle traffic, and human disturbance.
2. Special care must be taken during the digging, drilling, blasting and excavating of foundations, trenches, channels and footings and removal of overburden as a site visit may have missed a fossiliferous outcrop. An appropriate Protocol and Management plan is attached for the Environmental Control Officer (Appendix 2).

The recommendations are:

1. Mitigation may be needed (Appendix 2) if fossils are found.

2. No consultation with parties was necessary. The Environmental Control Officer must familiarise him- or herself with the formation present and its fossils.
3. The development may go ahead with caution, but the ECO must survey for fossils before and or after blasting, drilling or excavating.
4. The EMPr already covers the conservation of heritage and palaeontological material that may be exposed during construction activities. For a chance find, the protocol is to immediately cease all construction activities, construct a 30 m no-go barrier, and contact SAHRA for further investigation. It is recommended that the EMPr be updated to include the involvement of a palaeontologist (pre-construction training of ECO) during the ground breaking phase of the development.
5. Care must be taken during the dolomite risk assessment (according SANS 1936-1 (2012)) not to destroy any stromatolites.

Stakeholders: Developer – A-Thermal Retort Technologies. 28 Keramiek Street, Clayville, Olifantsfontein, 1666.
 Environmental – Exigo Sustainability (Pty) Ltd, Postnet Suite 74, Private Bag X07, Arcadia, 0007, Tel. 012 751 2160.
 Landowner – A-Thermal Retort Technologies.

C. Table of Contents

A. Title page	1
B. Executive Summary	2
C. Table of Contents	5
D. Background Information on the project	5
E. Description of the Property or Affected Environment	7
F. Description of the Geological Setting	8
G. Background to Palaeontology of the area	14
H. Description of the Methodology	16
I. Description of significant fossil occurrences	18
J. Recommendation	19
K. Conclusions	19
L. Bibliography	19
Declaration	20
Appendix 1: Examples of Vryheid Formation fossils	22
Appendix 2: Protocol for Chance Finds and Management Plan	22
Appendix 3: Table	24

D. Background information on the project

Report

This report is part of the environmental impact assessment process under the National Environmental Management Act, as amended (Act No. 107 of 1998) (NEMA) and includes Appendix 6 (May 2019) of the Environmental Impact Assessment Regulations (see Appendix 3). It is also in compliance with The Minimum Standards for Palaeontological Components of Heritage Impact Assessment Reports, SAHRA, APMHOB, Guidelines 2012, Pp 1-15.

Outline of development

This report discusses and aims to provide the applicant with information regarding the location of palaeontological material that will be impacted by the development. In the construction phase, it may be necessary for the applicant to apply for the relevant permit from the South African Heritage Resources Agency (SAHRA / PHRA) if a fossil is unearthed.

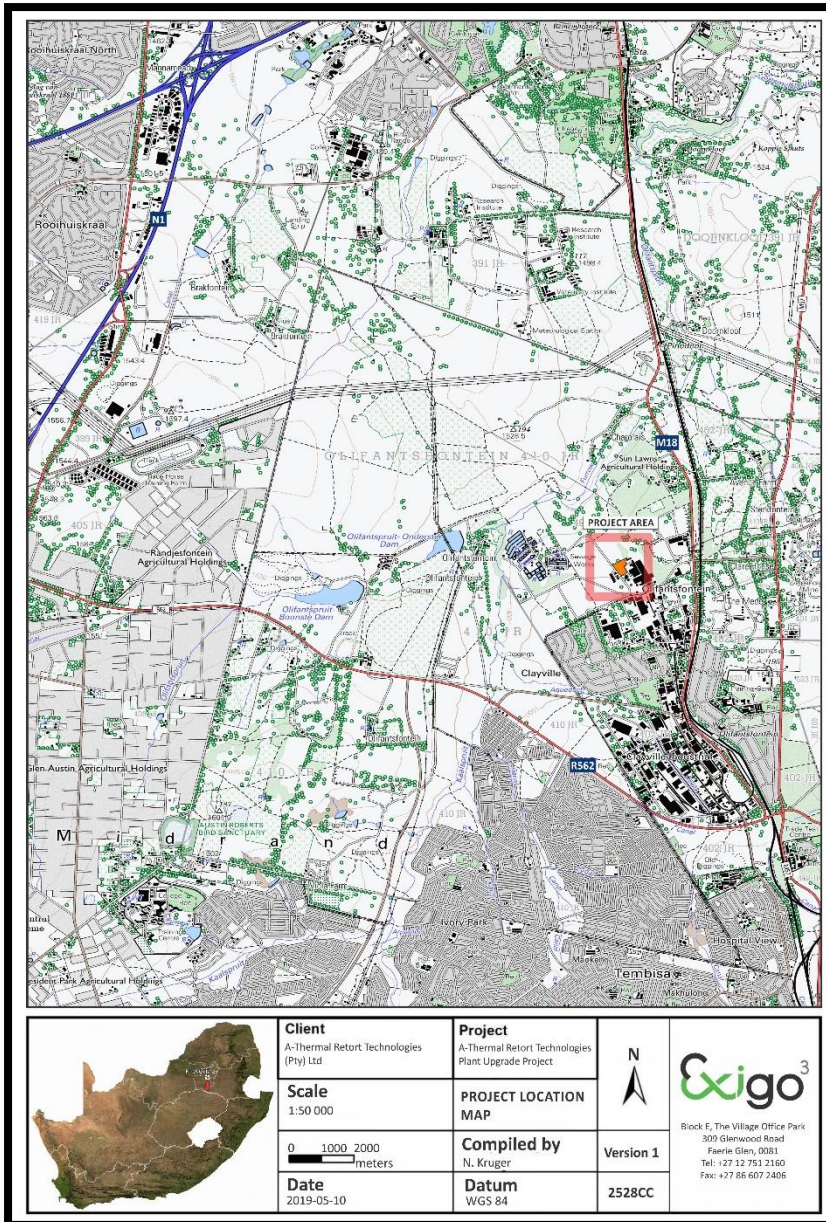
A-Thermal Retort Technologies (Pty) Ltd proposes the upgrade of their existing plant in the Clayville area in the Gauteng Province. The proposed upgrade is at the current plant. This company is a waste management service that specialises in the thermal treatment and management of hazardous waste.

Local benefits of the proposed development include benefits to the local economy through possible job creation and local supplier procurement during the construction phase as well as during the operational phase of the development.

Related infrastructure:

1. Building,
2. Parking area,
3. Sewer lines,
4. Power lines.

Figure 1: Topographic map (Exigo)



The Project includes one Alternative (Figure 1):

Alternative 1: An area blocked in red with Keramiek Street to the west, the factory to the east, an undeveloped area to the north, and an existing factory and Porcelain Road to the south. The size of the site is approximately 2.5 hectares in size.

Rezoning/ and or subdivision of land: No.

Name of developer and consultant: A-Thermal Retort Technologies and Exigo Sustainability (Pty) Ltd.

Terms of reference: Dr H. Fourie is a palaeontologist commissioned to do a palaeontological impact assessment: field study to ascertain if any palaeontological sensitive material is present in the development area. This study will advise on the impact on fossil heritage mitigation or conservation necessary, if any.

Curriculum vitae - short: Dr Fourie obtained a Ph.D from the Bernard Price Institute for Palaeontological Research (now ESI), University of the Witwatersrand. Her undergraduate degree is in Geology and Zoology. She specialises in vertebrate morphology and function concentrating on the Therapsid Therocephalia. She is currently employed by Ditsong: National Museum of Natural History as Curator of the fossil plant, invertebrate, amphibian, fish, reptile, dinosaur and Therapsid collections. For the past 13 years she carried out field work in

the Eastern Cape, Western Cape, North West, Northern Cape, Free State, Gauteng, Limpopo, Kwazulu Natal, and Mpumalanga Provinces. Dr Fourie has been employed at the Ditsong: National Museum of Natural History in Pretoria (formerly Transvaal Museum) for 25 years.

Legislative requirements: South African Heritage Resources Agency (SAHRA) for issue of permits if necessary. National Heritage Resources Act (Act No. 25 of 1999). An electronic copy of this report must be supplied to SAHRA.

E. Description of property or affected environment

Location and depth:

The Proposed A-Thermal Retort Technologies Plant Upgrade Project will be situated on the Farm Olifantsfontein 410-JR in the City of Tshwane Metropolitan Municipality, Gauteng Province.

Depth is determined by the related infrastructure to be developed and the thickness of the formation in the development area as well as depth of the foundations, footings and channels to be developed. Details of the location and distribution of all significant fossil sites or key fossiliferous rock units are often difficult to determine due to thick topsoil, subsoil, overburden and alluvium. Depth of the overburden may vary a lot. Geological maps do not provide depth or superficial cover, it only provides mappable surface outcrops. The depth can be verified with test pit results or drill cores.

Figure 2: Location map (Exigo).



The Project includes one Alternative (Figure 1):

Alternative 1: An area blocked in red with Keramiek Street to the west, the factory to the east, an undeveloped area to the north, and an existing factory and Porcelain Road to the south. The size of the site is approximately 2.5 hectares in size.

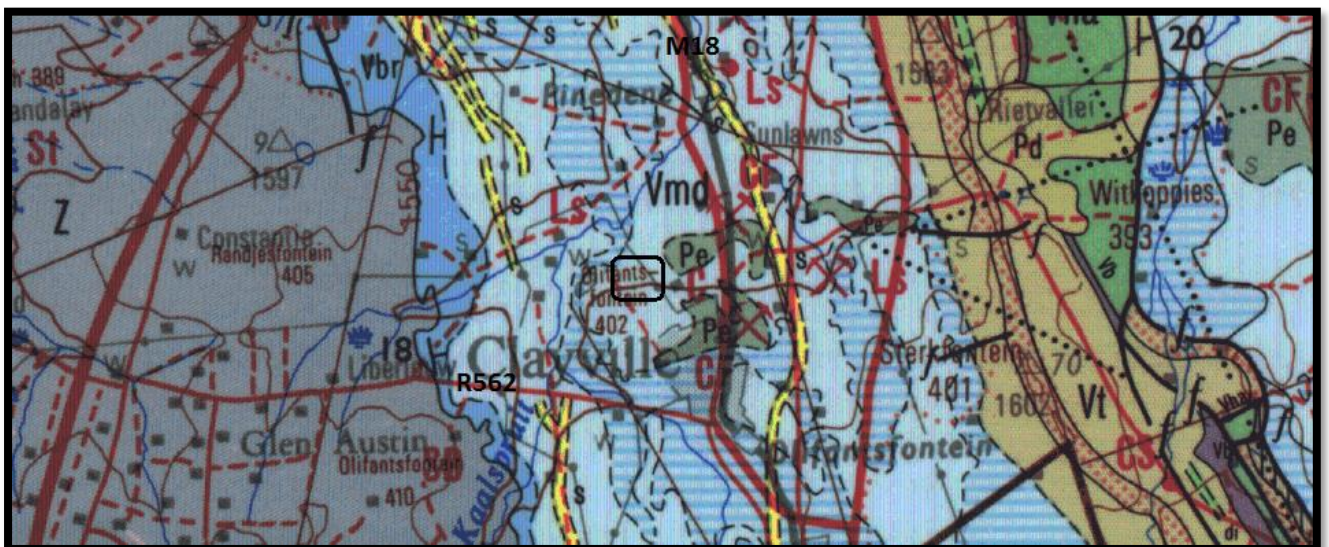
F. Description of the Geological Setting

Description of the rock units:

The Karoo Supergroup is renowned for its fossil wealth (Kent 1980, Visser 1989). Large areas of the southern African continent are covered by the Karoo Supergroup. An estimated age is 150 – 180 Ma. and a maximum thickness of 7000 m is reached in the south. Three formations overlie the Beaufort Group, they are the Molteno, Elliot and Clarens Formations. At the top is the Drakensberg Basalt Formation with its pillow lavas, pyroclasts, and basalts (Kent 1980, Snyman 1996). The Beaufort Group is underlain by the Eccca Group which is underlain by the Dwyka Group.

The Eccca Group is early to mid-Permian (545-250 Ma) in age. Sediments of the Eccca group are lacustrine and marine to fluvio-deltaic (Snyman 1996). The Eccca group is known for its coal (mainly the Vryheid Formation) (five coal seams) and uranium. Coalfields formed due to the accumulation of plant material in shallow and large swampy deltas (see Appendix 1). The Eccca Group conformably overlies the Dwyka Group and is conformably overlain by the Beaufort Group, Karoo Supergroup. It consists essentially of mudrock (shale), but sandstone-rich units occur towards the margins of the present main Karoo basin in the south, west and north-east, with coal seams also being present in the north-east (Kent 1980, Johnson 2009).

Figure 3: Excerpt of 1:250 000 Geological Map 2528 Pretoria (Walrafen1978).



Legend to map and short explanation.

Pe – (grey) Sandstone, shaly sandstone, grit, shale, conglomerate and coal near base and top. Vryheid Formation, Eccca Group, Karoo Supergroup. Permian.

Vmd – Dolomite, chert [=] (blue), Malmani Subgroup, Chuniespoort Group, Transvaal Supergroup. Vaalian.

----- (blue) Lineament (Landsat, aeromagnetic).

----- - Concealed geological boundary.

⊥30 – Strike and dip of bed.

□ – Proposed development (blocked in black).

Mining Activities on Figure:

C - Coal

CF – Flint fire-clay

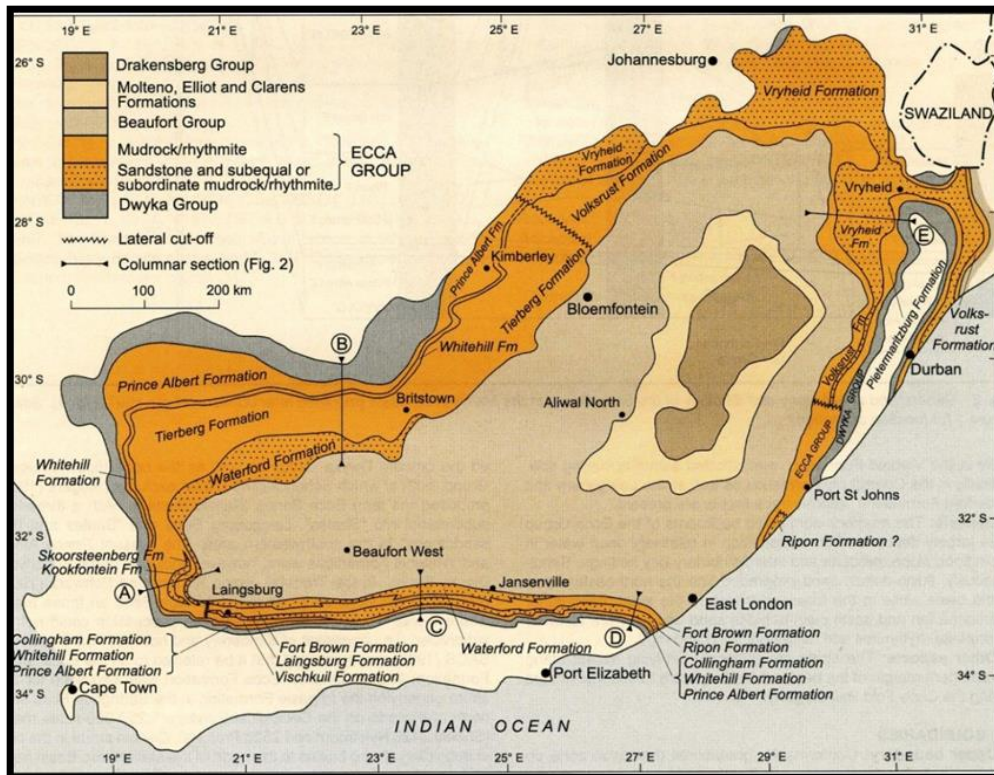
Ls - Limestone.

The mining past and present has no influence on the development.

The Vryheid Formation is named after the type area of Vryheid-Volksrust. In the north-eastern part of the basin the Vryheid Formation thins and eventually wedges out towards the south, southwest and west with increasing distance from its source area to the east and northeast (Johnson 2009). The Vryheid Formation consists essentially of sandstone, shale, and subordinate coal beds, and has a maximum total thickness of 500 m. It

forms part of the Middle Ecca (Kent 1980). This formation has the largest coal reserves in South Africa. The pro-delta sediments are characterised by trace and plants fossils (Snyman 1996).

Figure 4: Karoo Supergroup distribution and lithostratigraphy (Johnson 2009).



Coal has always been the main energy source in industrial South Africa. It is in Mpumalanga, south of the N4, that most of the coal-fired power stations are found. Eskom is by far the biggest electricity generator in Africa. Thick layers of coal just below the surface are suited to open-cast mining and where the overlying sediments are too thick, shallow underground mining. In 2003, coal was South Africa's third most valuable mineral commodity and is also used by Sasol for fuel- and chemicals-from-coal (Norman and Whitfield 2006). Grodner and Cairncross (2003) proposed a 3-D model of the Witbank Coalfield to allow easy evaluation of the sedimentary rocks, both through space and time. Through this, one can interpret the environmental conditions present at the time of deposition of the sediments. This can improve mine planning and mining techniques. The Vryheid Formation is underlain by the Dwyka Group and is gradually overlain by mudstones (and shale) and sandstones of the Volksrust Formation. The typical colours for the Vryheid Formation are grey and yellow for the sediments and black for the coal seam. The thickness of the grey shale can vary and this is interlayered with the also variable yellow sandstone and coal seams.

Ecca rocks are stable and lend themselves well to developments. It is only unstable in or directly above mining activities (Snyman 1996). Dolerite dykes occur throughout the Karoo Supergroup. Structural geological features such as dykes and faults can have a measurable influence on ground water flow and mass transport. The Vryheid Formation sediments may attain a thickness of 120 – 140 m. A typical profile includes soil and clay, sandstone and siltstone, shale, 2 upper seam, shale, 2 seam, sandstone, no 1 seam, shale and dolomite at the bottom. The typical colours for the Vryheid Formation are grey and yellow for the sediments and black for the coal seam. The thickness of the grey shale can vary and this is interlayered with the also variable yellow sandstone and coal seams.

The Transvaal Supergroup fills an east-west elongated basin in the south-central part of the old Transvaal (now North – West, Gauteng and Mpumalanga) as far south as Potchefstroom. It is Vaalian in age, approximately 2600 Ma to 2100 Ma. A maximum thickness of the Transvaal Supergroup reaches 2000 m in the north-eastern section. The east-west elongated basin is filled with clastic, volcanic and chemical sedimentary rocks. Three groups based on lithological differences have been established: they are the Rooiberg, Pretoria and Chuniespoort Groups as well as other smaller groups (Kent 1980, Snyman 1996). It is the Bushveld Complex that is responsible for the tilting of the Transvaal sediments and the heat of its intrusion having created andalusite crystals (Norman and Whitfield 2006). This Supergroup is underlain by the Ventersdorp, Witwatersrand and Pongola Supergroups, and the Dominion Group. Three prominent ridges are present from the oldest to the youngest, the Time Ball Hill, Daspoort and Magaliesberg Formations (Norman and Whitfield 2006).

The Chuniespoort Group is made up of chemical and biochemical sediments such as dolomite, chert, limestone and banded iron formation, carbonaceous shale is also present. At the top of the Malmani Subgroup is the Deutschland Formation underlain by the Penge and Monte Christo Formations. Sandstone is mostly absent. It is this formation that has great economic value for its lead, zinc, dolomite, and manganese (Kent 1980, Snyman 1996). Fluorspar, concrete aggregate, iron ore and manganese are also mined from this formation. Cave formation in the dolomite is a major concern in developing areas, especially in the 1500m thick dolomite of the Malmani Subgroup. Chemical sediments such as fine-grained limestone and dolomite is made up of deposits of organically derived carbonate shells, particles or precipitate. Dolomite is magnesium-rich limestone formed from algal beds and stromatolites. The Black Reef Formation is known for stromatolite carbonates and fossiliferous Late Cenozoic cave breccias similar to the Malmani dolomite.

Field Observations

The area is accessible, but parts of it has lush grass which makes seeing outcrops difficult. There is a dam, animal shelters, lapa, and trees on site. Outcrops are present in the form of chert blocks.

Figure 5: Area around dam. Dam wall is built with local chert.



Figure 6: Chert is present as outcrops.



Figure 7: View towards Keramiek Street with lush grass and animal shelter.



Figure 8: View towards lapa area and dam at entrance gate.



Figure 9: View of area to the north with dog shelter.



Figure 10: Lush grass area.



There is some concern with the project due to the presence of the Vryheid Formation nearby and the Malmani Subgroup. The depth of the formations can be verified with geological cores. The topsoil, subsoil and overburden must be surveyed for fossils and Mitigation is needed for the shale layer if fossils are present.

The project includes one Alternative (Figure 1)

Alternative 1: An area blocked in red with Keramiek Street to the west, the factory to the east, an undeveloped area to the north, and an existing factory and Porcelain Road to the south. The size of the site is approximately 2.5 hectares in size.

G. Background to Palaeontology of the area

Summary: When rock units of moderate to very high palaeontological sensitivity are present within the development footprint, a desk top and or field scoping (survey) study by a professional palaeontologist is usually warranted. The main purpose of a field scoping (survey) study would be to identify any areas within the development footprint where specialist palaeontological mitigation during the construction phase may be required (SG 2.2 SAHRA AMPHOB, 2012).

The Ecca Group may contain fossils of diverse non-marine trace, *Glossopteris* flora, mesosaurid reptiles, palaeoniscid fish, marine invertebrates, insects, and crustaceans (Johnson 2009). *Glossopteris* trees rapidly colonised the large deltas along the northern margin of the Karoo Sea. Dead vegetation accumulated faster than it could decay, and thick accumulations of peat formed, which were ultimately converted to coal. It is only in the northern part of the Karoo Basin that the glossopterids and cordaitales, ferns, clubmosses and horsetails thrived (McCarthy and Rubidge 2005).

The *Glossopteris* flora is thought to have been the major contributor to the coal beds of the Ecca. These are found in Karoo-age rocks across Africa, South America, Antarctica, Australia and India. This was one of the early clues to the theory of a former unified Gondwana landmass (Norman and Whitfield 2006).

Trace fossils are relatively abundant in the shales occurring near the top of the Dwyka Group. Lycopods (*Leptophloem australe*) have been described from the northern Free State (Mac Rae 1999). Spores and acritarchs have been reported from the interglacial mudrocks of the Dwyka Group, also spores, pollen, wood, and plant remains in the interbedded mudrocks as well as the diamictite itself, while anthropod trackways and fish trails are present in places on bedding planes (Visser *et al.* 1990).

Chemical sediments such as fine-grained limestone and dolomite of the Malmani Subgroup are made up of deposits of organically derived carbonate shells, particles or precipitate. Dolomite is magnesium-rich limestone formed from algal beds and stromatolites. These Early Proterozoic Transvaal stromatolitic dolomites formed and released free oxygen at around 2900 – 2400 Ma. Stromatolites are common in the Malmani dolomites, accepted to be the fossil remnants of the simplest single-celled organisms. They are finely layered, concentric, mound-like structures formed by microscopic algal organisms (Norman and Whitfield 2006). Chert may contain fossils such as echinoids or sponges if nodular, although not common and is rated unlikely.

Figure 11: Stromatolite in dolomite (Photograph E. Butler).



Table 1: Taken from The Palaeotechnical Report (Groenewald and Groenewald 2014).

Permian	Karoo	ECCA (P, Pe) (unclassified)	Undifferentiated (Pe)			Deltic sandstones, shales and coals, with minor conglomerates	Rich assemblages of plant fossils (Glossop's Flora), including tree trunks, stumps and roots, palynomorphs, rare insects, conchostracans, low diversity trace fossil assemblages. Very rich and historically important plant fossil collections from Vryheid Formation at Vryheidling	N.S. important plant fossils like the Lantieri may be equivalent to the Late Permian Zecourt Formation (i.e. Upper Ecca or Lower Beaufort Group) rather than the Middle Ecca, but are mapped as Vryheid Formation.
Carboniferous		DWYKA (C-Pd)		Probably Mbitana	Glacial to fluvio-glacial diamictites, conglomerates, sandstones, shales. Late Carboniferous to Early Permian in age	Possibility of interglacial or post-glacial trace fossil assemblages, fossil plants, shelly invertebrates – but these fossils not yet recorded from Gauteng		

CHUNIESPOORT		Duitschland (Vd)		Conglomerate	No fossils recorded	Good examples of stromatolites in Cradle of Humankind region	
		Penge (Vp)		Iron-rich shale	Stromatolites		
		Malmani (Vm; Vmd; Vma)			Stromatolitic carbonates (limestones / dolomites), minor secondary cherts, mudrocks including carbonaceous shales	Range of shallow marine to intertidal stromatolites (domes, columns etc), organic-walled microfossils	ALERT FOR POTENTIALLY FOSSILIFEROUS LATE CAENOZOIC CAVE BRECCIAS WITHIN "TRANSVAAL DOLOMITE" OUTCROP AREA (breccias not individually mapped)
		Black Reef (Vbr)			Siliciclastic sediments (mature sandstones plus minor mudrocks, conglomerates) deposited during a fluvial to shallow marine transition	Possible equivalent of Black Reef Fm in N. Cape (Vryburg Formation) contains stromatolitic carbonates	

Fossils in South Africa mainly occur in rocks of sedimentary nature and not in rocks from igneous or metamorphic nature. Therefore, if there is the presence of Karoo Supergroup strata the palaeontological sensitivity is generally **LOW** to **VERY HIGH**, but here locally **HIGH** for the Malmani Subgroup and **VERY HIGH** for the Vryheid Formation nearby.

Table 2: Criteria used (Fossil Heritage Layer Browser/SAHRA).

Rock Unit	Significance/vulnerability	Recommended Action
Vryheid Formation (Pv) (Pe)	Very High	Field assessment and protocol for finds is required
Malmani Subgroup (Vmd)	High	Field assessment and protocol for finds is required

Databases and collections: Ditsong: National Museum of Natural History. Evolutionary Studies Institute, University of the Witwatersrand (ESI).

Impact: **HIGH**. There are significant fossil resources that may be impacted by the development (shale).

H. Description of the Methodology (1e)

The palaeontological impact assessment field study was undertaken on 19 February 2020. The walk through of the affected portion were done and photographs (in 20 mega pixels) were taken of the site with a digital camera (Canon PowerShot SX620HS). It was not necessary to use a Global Positioning System (GPS) (Garmin eTrex 10) to record outcrops if not covered with topsoil, subsoil, overburden, and vegetation. A literature survey is included and the study relied on literature, geological maps, google.maps, and google.earth images.

SAHRA Document 7/6/9/2/1 requires track records/logs from archaeologists not palaeontologists as palaeontologists concentrate on outcrops which may be recorded on a GPS. Isolated occurrences of rocks usually do not constitute an outcrop. Fossils can occur in dongas, as nodules, in fresh rock exposures, and in riverbeds. Finding fossils require the experience and technical knowledge of the professional palaeontologist, but that does not mean that an amateur can't find fossils. The geology of the region is used to predict what type of fossil and zone will be found in any particular region. An archaeozoologist can be called upon to survey for more recent fossils in the Quaternary and Tertiary deposits, if present.

Assumptions and Limitations (1i):-

The accuracy and reliability of the report may be limited by the following constraints:

1. Most development areas have never been surveyed by a palaeontologist or geophysicist.
2. Variable accuracy of geological maps and associated information.
3. Poor locality information on sheet explanations for geological maps.
4. Lack of published data.
5. Lack of rocky outcrops.
6. Inaccessibility of site.
7. Insufficient data from developer and exact lay-out plan for all structures (for this report all required data/information was provided).

A Phase 1 Palaeontological Impact Assessment: Field Study will include:

1. Recommendations for the future of the site.
2. Background information on the project.
3. Description of the property of affected environment with details of the study area.
4. Description of the geological setting and field observations.
5. Background to palaeontology of the area.
6. Heritage rating.
7. Stating of significance (Heritage Value).

A Phase 2 Palaeontological Impact Assessment: Mitigation will include:

1. Recommendations for the future of the site.

2. Description of work done (including number of people and their responsibilities).
3. A written assessment of the work done, fossils excavated, not removed or collected and observed.
4. Conclusion reached regarding the fossil material.
5. A detailed site plan.
6. Possible declaration as a heritage site or Site Management Plan.

The National Heritage Resources Act No. 25 of 1999 further prescribes -

Act No. 25 of 1999. National Heritage Resources Act, 1999.

The National Estate as: 3 (2) (f) archaeological and palaeontological sites, (i)(1) objects recovered from the soil or waters of South Africa, including archaeological and palaeontological objects and material, meteorites and rare geological specimens,

Heritage assessment criteria and grading used: (a) Grade 1: Heritage resources with qualities so exceptional that they are of special national significance;

(b) Grade 2: Heritage resources which, although forming part of the national estate, can be considered to have special qualities which make them significant within the context of a province or a region; and
(c) Grade 3: Other heritage resources worthy of conservation.

SAHRA is responsible for the identification and management of Grade 1 heritage resources.

Provincial Heritage Resources Authority (PHRA) identifies and manages Grade 2 heritage resources.

Local authorities identify and manage Grade 3 heritage resources.

No person may damage, deface, excavate, alter, remove from its original position, subdivide or change the planning status of a provincially protected place or object without a permit issued by a heritage resources authority or local authority responsible for the provincial protection.

Archaeology, palaeontology and meteorites: Section 35.

(2) Subject to the provisions of subsection (8) (a), all archaeological objects, palaeontological material and meteorites are the property of the State.

(3) Any person who discovers archaeological or palaeontological objects or material or a meteorite in the course of development or agricultural activity must immediately report the find to the responsible heritage resources authority, or to the nearest local authority offices or museum, which must immediately notify such heritage resources authority.

Mitigation involves planning the protection of significant fossil sites, rock units or other palaeontological resources and/or excavation, recording and sampling of fossil heritage that might be lost during development, together with pertinent geological data. The mitigation may take place before and / or during the construction phase of development. The specialist will require a Phase 2 mitigation permit from the relevant Heritage Resources Authority before a Phase 2 may be implemented.

The Mitigation is done in order to rescue representative fossil material from the study area to allow and record the nature of each locality and establish its age before it is destroyed and to make samples accessible for future research. It also interprets the evidence recovered to allow for education of the public and promotion of palaeontological heritage.

Should further fossil material be discovered during the course of the development (e. g. during bedrock excavations), this must be safeguarded, where feasible *in situ*, and reported to a palaeontologist or to the Heritage Resources authority. In situations where the area is considered palaeontologically sensitive (e. g. Karoo Supergroup Formations, ancient marine deposits in the interior or along the coast) the palaeontologist might

need to monitor all newly excavated bedrock. The developer needs to give the palaeontologist sufficient time to assess and document the finds and, if necessary, to rescue a representative sample.

When a Phase 2 palaeontological impact study is recommended, permission for the development to proceed can be given only once the heritage resources authority has received and approved a Phase 2 report and is satisfied that (a) the palaeontological resources under threat have been adequately recorded and sampled, and (b) adequate development on fossil heritage, including, where necessary, *in situ* conservation of heritage of high significance. Careful planning, including early consultation with a palaeontologist and heritage management authorities, can minimise the impact of palaeontological surveys on development projects by selecting options that cause the least amount of inconvenience and delay.

Three types of permits are available; Mitigation, Destruction and Interpretation. The specialist will apply for the permit at the beginning of the process (SAHRA 2012).

I. Description of significant fossil occurrences (1f)

All Karoo Supergroup geological formations are ranked as **LOW** to **VERY HIGH**, and here the impact is potentially **VERY HIGH** for the Vryheid Formation, Ecca Group. Rocks of Permian age in South Africa are particularly rich in fossil plants (Rayner and Coventry 1985). The fossils are present in the grey shale interlayered with the coal seams. The fossils are not very rare and occur also in other parts of the Karoo stratigraphy. It is often difficult to spot the greyish fossils as they are the same colour as the grey shale in which they are present as these coalified compressions have been weathered to leave surface replicas on the enclosing shale matrix. The pollen of the Greenside Colliery near Witbank also on the Vryheid Formation was the focus of a Ph.D study. A locality close to Ermelo, also Vryheid Formation, has yielded *Scutum*, *Glossopteris* leaves, *Neoggerathiopsis* leaves, the lycopod *Cyclodendron leslii*, and various seeds and scale leaves (Prevec 2011).

Fossils likely to be found are mostly plants (Appendix 1) such as '*Glossopteris flora*' of the Vryheid Formation. The aquatic reptile *Mesosaurus* and fossil fish may also occur with marine invertebrates, arthropods and insects. Trace fossils can also be present. The marine bivalve *Megadesmus* is found in the upper part of the Volksrust Formation near Newcastle (Johnson 2009). During storms a great variety of leaves, fructifications and twigs accumulated and because they were sandwiched between thin films of mud, they were preserved to bear record of the wealth and the density of the vegetation around the pools. They make it possible to reconstruct the plant life in these areas and wherever they are found, they constitute most valuable palaeobotanical records (Plumstead 1963) and can be used in palaeoenvironmental reconstructions.

Chemical sediments such as fine-grained limestone and dolomite of the Malmani Subgroup is made up of deposits of organically derived carbonate shells, particles or precipitate. Dolomite is magnesium-rich limestone formed from algal beds and stromatolites. These Early Proterozoic Transvaal stromatolitic dolomites formed and released free oxygen at around 2900 – 2400 Ma. Stromatolites are common in the Malmani dolomites, accepted to be the fossil remnants of the simplest single-celled organisms. They are finely layered, concentric, mound-like structures formed by microscopic algal organisms (Norman and Whitfield 2006). Chert may contain fossils such as echinoids or sponges if nodular, although not common and is rated unlikely.

Details of the location and distribution of all significant fossil sites or key fossiliferous rock units are often difficult to be determined due to thick topsoil, subsoil, overburden and alluvium. Depth of the overburden may vary a lot. The vast coal mining industry (Vryheid Formation) provides palaeontologists with fantastic access to coal-associated plant fossils, while simultaneously resulting in the destruction of important National Palaeontological Heritage.

The threats to the National Palaeontological Heritage are:- earth moving equipment/machinery (for example haul trucks, front end loaders, excavators, graders, dozers) during construction, the sealing-in or destruction of fossils by development, vehicle traffic, and human disturbance. See Description of the Geological Setting (F) above.

J. Recommendation (1j,1l)

- a. There is no objection (see Recommendation B) to the development, but it was necessary to request a Phase 1 Palaeontological Impact Assessment: Field Study to determine whether the development will affect fossiliferous outcrops as the palaeontological sensitivity is **HIGH**. A Phase 2 Palaeontological Mitigation is only required if the Phase 1 Palaeontological Assessment identified a fossiliferous formation or surface fossils or if fossils are found during construction excavations and blasting. Fossils were not found during the walk through. The Protocol for Chance Finds and Management Plan is attached (Appendix 2) for the ECO.
- b. This project will benefit the environment, economy, and social development of the community.
- c. Preferred choice: Only one Alternative is presented (see Executive Summary).
- d. The following should be conserved: if any palaeontological material is exposed during digging, excavating, drilling or blasting SAHRA must be notified. All construction activities must be stopped and a palaeontologist should be called in to determine proper mitigation measures.

Sampling and collecting (1m,1k):

Wherefore a permit is needed from the South African Heritage Resources Agency (SAHRA / PHRA).

- a. Objections: Cautious. See heritage value and recommendation.
- b. Conditions of development: See Recommendation.
- c. Areas that may need a permit: Only if a fossil is unearthed.
- d. Permits for mitigation: **SAHRA/PHRA**.

K. Conclusions

- a. All the land involved in the development was assessed and none of the property is unsuitable for development (see Recommendation B).
- b. All information needed for the Phase 1 Palaeontological Impact Assessment and Field scope was provided by the Consultant. All technical information was provided by Exigo Sustainability (Pty) Ltd.
- c. Areas that would involve mitigation and may need a permit from the South African Heritage Resources Agency are discussed.
- d. The following should be conserved: if any palaeontological material is exposed during digging, excavating, drilling or blasting, SAHRA must be notified. All development activities must be stopped, a 30 m no-go barrier constructed and a palaeontologist should be called in to determine proper mitigation measures, especially for shallow caves.
- e. Condition in which development may proceed: It is further suggested that a Section 37(2) agreement of the Occupational, Health and Safety Act 85 of 1993 is signed with the relevant contractors to protect the environment (fossils) and adjacent areas as well as for safety and security reasons.

L. Bibliography

ALMOND, J., PETHER, J, and GROENEWALD, G. 2013. South African National Fossil Sensitivity Map. SAHRA and Council for Geosciences.

DE ZANCHE, V. and MIETTO, P. 1977. *The World of Fossils*. Sampson Low Guides, Berkshire, Printed in Italy, Pp 256.

GRODNER, M. and CAIRNCROSS, B. 2003. A regional scale 3-D model of the Witbank Coalfield, Northern Karoo Basin, South Africa. *South African Journal of Geology*, **106(4)**: 249-264.

- GROENEWALD, G and GROENEWALD, D. 2014. SAHRA Palaeotechnical Report. Palaeontological Heritage of the Gauteng Province, Pp 20.
- JOHNSON, M.R. 2009. Ecca Group. Karoo Supergroup. Catalogue of South African Lithostratigraphic Units. SACS, **10**: 5-7.
- KENT, L. E., 1980. Part 1: Lithostratigraphy of the Republic of South Africa, South West Africa/Namibia and the Republics of Bophuthatswana, Transkei and Venda. SACS, Council for Geosciences, *Stratigraphy of South Africa. 1980. South African Committee for Stratigraphy. Handbook 8, Part 1*, pp 690.
- MACRAE, C. 1999. *Life Etched in Stone: Fossils of South Africa*. Geological Society of South Africa, Johannesburg. Pp 305.
- MCCARTHY, T and RUBIDGE, B. 2005. *The Story of Earth Life: A southern African perspective on a 4.6-billion-year journey*. Struik. Pp 333.
- NIXON, N., ERIKSSON, P.G., JACOBS, R. and SNYMAN, C.P. 1988. Early Proterozoic micro-algal structures in carbonaceous shales of the Pretoria Group, south-west of Potchefstroom. *South African Journal of Science*, **84**: 592-595.
- NORMAN, N. and WHITFIELD, G., 2006. *Geological Journeys*. De Beers, Struik, P 1-320.
- PLUMSTEAD, E.P. 1963. The influence of plants and environment on the developing animal life of Karoo times. *South African Journal of Science*, **59(5)**: 147-152.
- PREVEC, R. 2011. A structural re-interpretation and revision of the type material of the glossopterid ovuliferous fructification *Scutum* from South Africa. *Palaeontologia africana*, **46**: 1-19.
- RAYNER, R.J. and COVENTRY, M.K. 1985. A *Glossopteris* flora from the Permian of South Africa. *South African Journal of Science*, **81**: 21-32.
- RUBIDGE, B. S. (ed.), 1995. Biostratigraphy of the Beaufort Group (Karoo Supergroup). South African Committee for Biostratigraphy, Biostratigraphic Series No. 1, 46pp. Council for Geoscience, Pretoria.
- SG 2.2 SAHRA APMHOB Guidelines, 2012. Minimum standards for palaeontological components of Heritage Impact Assessment Reports, Pp 1-15.
- SNYMAN, C. P., 1996. *Geologie vir Suid-Afrika*. Departement Geologie, Universiteit van Pretoria, Pretoria, Volume 1, Pp. 513.
- VAN DER WALT, M., DAY, M., RUBIDGE, B. S., COOPER, A. K. & NETTERBERG, I., 2010. Utilising GIS technology to create a biozone map for the Beaufort Group (Karoo Supergroup) of South Africa. *Palaeontologia Africana*, **45**: 1-5.
- VISSER, D.J.L. 1984 (ed). Geological Map of South Africa 1:100 000. South African Committee for Stratigraphy. Council for Geoscience, Pretoria.
- VISSER, D.J.L. 1989 (ed). *Toeligting: Geologiese kaart (1:100 000). Die Geologie van die Republieke van Suid Afrika, Transkei, Bophuthatswana, Venda, Ciskei en die Koningkryke van Lesotho en Swaziland*. South African Committee for Stratigraphy. Council for Geoscience, Pretoria.
- WALRAFEN, V. 1978. 1:250 000 Geological Map of Pretoria, 2528. South African Committee for Stratigraphy, Council for Geoscience, Pretoria.

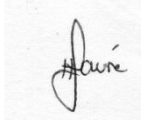
Declaration (disclaimer) 1(b)

I, Heidi Fourie, declare that I am an independent consultant and have no business, financial, personal or other interest in the proposed development project for which I was appointed to do a palaeontological assessment. There are no circumstances that compromise the objectivity of me performing such work.

I accept no liability, and the client, by receiving this document, indemnifies me against all actions, claims, demands, losses, liabilities, costs, damages and expenses arising from or in connection with services rendered, directly or indirectly by the use of the information contained in this document.

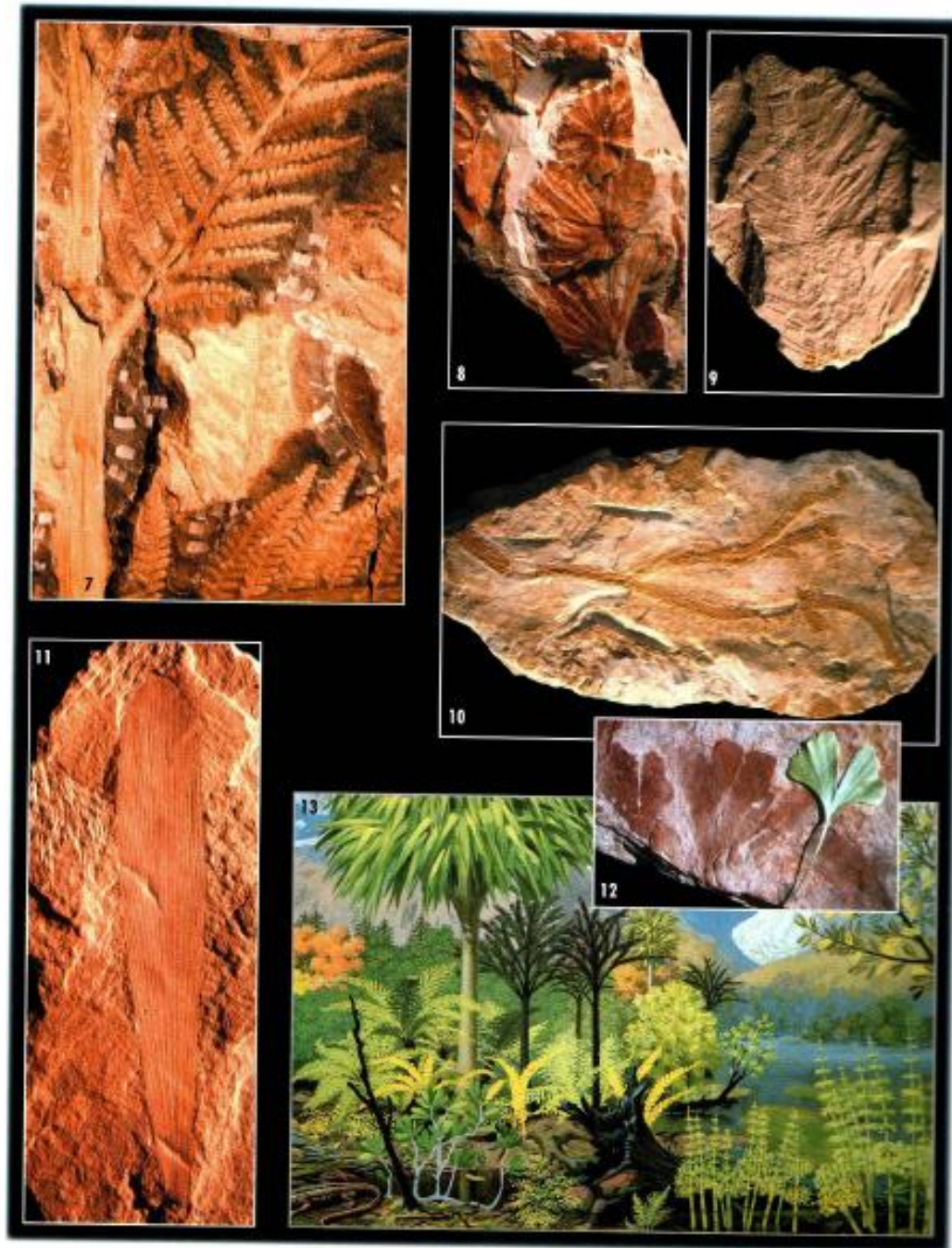
It may be possible that the Phase 1 PIA study may have missed palaeontological resources in the project area as outcrops are not always present or visible due to vegetation while others may lie below the overburden of earth and may only be present once development commences.

This report may not be altered in any way and any parts drawn from this report must make reference to this report.

A handwritten signature in black ink, appearing to read 'Fourie', is centered within a light gray rectangular box.

Heidi Fourie
2020/02/24

Appendix 1: Examples of Vryheid Formation fossils (MacRae 1999).



Appendix 2 (1k,1m,1g): Protocol for Chance Finds and Management plan

This section covers the recommended protocol for a Phase 2 Mitigation process as well as for reports where the Palaeontological Sensitivity is **LOW**; this process guides the palaeontologist / palaeobotanist on site and should not be attempted by the layman / developer. As part of the Environmental Authorisation conditions, an Environmental Control Officer (ECO) will be appointed to oversee the construction activities in line with the legally binding Environmental Management Programme (EMPr) so that when a fossil is unearthed they can notify the relevant department and specialist to further investigate. Therefore, the EMPr must be updated to include the involvement of a palaeontologist during the digging and excavation (ground breaking) phase of the development.

The EMPr already covers the conservation of heritage and palaeontological material that may be exposed during construction activities.

- The protocol is to immediately cease all construction activities if a fossil is unearthed and contact SAHRA for further investigation.
- The area must be fenced-off with a 30 m barrier and the construction workers must be informed that this is a no-go area.
- If fossils were found, they must be placed in a safe area for further investigation.
- The ECO should familiarise him- or herself with the fossiliferous formations and its fossils.
- A site visit is recommended after drilling, excavations and blasting and the keeping of a photographic record. A regular monitoring presence over the period during which excavations are made, by a palaeontologist, is generally not practical, but can be done during ground breaking.
- Ditsong: Museums of South Africa and The Evolutionary Studies Institute, University of the Witwatersrand has good examples of Fossils.

The developer must survey the areas affected by the development and indicate on plan where the construction / development / mining (if applicable) will take place. Trenches have to be dug to ascertain how deep the sediments are above the bedrock (can be a few hundred metres). This will give an indication of the depth of the topsoil, subsoil, and overburden, if need be trenches should be dug deeper to expose the interburden.

Mitigation will involve recording, rescue and judicious sampling of the fossil material present in the layers sandwiched between the geological / coal layers (if present). It must include information on number of taxa, fossil abundance, preservational style, and taphonomy. This can only be done during mining or excavations. In order for this to happen, in case of coal mining operations, the process will have to be closely scrutinised by a professional palaeontologist / palaeobotanist to ensure that only the coal layers are mined and the interlayers (siltstone and mudstone) are surveyed for fossils or representative sampling of fossils are taking place.

The palaeontological impact assessment process presents an opportunity for identification, access and possibly salvage of fossils and add to the few good fossil localities. Mitigation can provide valuable onsite research that can benefit both the community and the palaeontological fraternity.

A Phase 2 study is very often the last opportunity we will ever have to record the fossil heritage within the development area. Fossils excavated will be stored at a National Repository.

A Phase 2 Palaeontological Impact Assessment: Mitigation will include (SAHRA) -

1. Recommendations for the future of the site.
2. Description and purpose of work done (including number of people and their responsibilities).
3. A written assessment of the work done, fossils excavated, not removed or collected and observed.
4. Conclusion reached regarding the fossil material.
5. A detailed site plan and map.
6. Possible declaration as a heritage site or Site Management Plan.
7. Stakeholders.
8. Detailed report including the Desktop and Phase 1 study information.
9. Annual interim or progress Phase 2 permit reports as well as the final report.
10. Methodology used.

Three types of permits are available; Mitigation, Destruction and Interpretation. The specialist will apply for the permit at the beginning of the process (SAHRA 2012).

The Palaeontological Society of South Africa (PSSA) does not have guidelines on excavating or collecting, but the following is suggested:

1. The developer needs to clearly stake or peg-out (survey) the areas affected by the mining (if applicable)/ construction/ development operations and dig representative trenches and if possible supply geological borehole data.
2. Fossils likely to occur are for example the fossil plants from the Vryheid Formation, these are present in the grey shale (or any other fossiliferous layer ranked as **VERY HIGH** or **HIGH**) or for example the invertebrates in case of the Volksrust Formation (or any other fossiliferous layer).
3. When clearing topsoil, subsoil or overburden and hard rock (outcrop) is found, the contractor / developer needs to stop all work.
4. A Palaeobotanist / palaeontologist (contact SAHRIS for list) must then inspect the affected areas and trenches for fossiliferous outcrops / layers. The contractor / developer may be asked to move structures, and put the development on hold.
5. If the palaeontologist / palaeobotanist is satisfied that no fossils will be destroyed or have removed the fossils, development and removing of the topsoil can continue.
6. After this process the same palaeontologist / palaeobotanist will have to inspect and offer advice through the Phase 2 Mitigation Process. Bedrock excavations for footings may expose, damage or destroy previously buried fossil material and must be inspected.
7. When permission for the development is granted, the next layer can be removed, if this is part of a fossiliferous layer, then with the removal of each layer of sediment, the palaeontologist / palaeobotanist must do an investigation (a minimum of once a week).
8. At this stage the palaeontologist / palaeobotanist in consultation with the developer / mining company must ensure that a further working protocol and schedule is in place. Onsite training should take place, followed by an annual visit by the palaeontologist / palaeobotanist.

Fossil excavation, if necessary, during Phase 2:

1. Photography of fossil / fossil layer and surrounding strata.
2. Once a fossil has been identified as such, the task of extraction begins.
3. It usually entails the taking of a GPS reading and recording lithostratigraphic, biostratigraphic, date, collector and locality information.
4. Use Paraloid (B-72) as an adhesive and protective glue, parts of the fossil can be kept together (not necessarily applicable to plant fossils).
5. Slowly chipping away of matrix surrounding the fossil using a geological pick, brushes and chisels.
6. Once the full extent of the fossil / fossils is visible, it can be covered with a plaster jacket (not necessarily applicable to plant fossils).
7. Chipping away sides to loosen underside.
8. Splitting of the rock containing palaeobotanical material should reveal any fossils sandwiched between the layers.

SAHRA Documents:

Guidelines to Palaeontological Permitting Policy.

Minimum Standards: Palaeontological Component of Heritage Impact Assessment reports.

Guidelines for Field Reports.

Palaeotechnical Reports for all the Provinces.

Appendix 3: Table of Appendix 6 requirements.

Section	Point in Act	Heading
---------	--------------	---------

B	1(c)	Outline of development project
	1(d)	Summary of findings
	1(g)	Concerns/threats
	1(n)i	Concerns/threats
	1(n)ii	Concerns/threats
	1(o)	Concerns/threats
	1(p)	Concerns/threats
D	1(h)	Figures
	1(a)i	Terms of reference
H	1(e)	Description of Methodology
	1(i)	Assumptions and Limitations
I	1(f)	Heritage value
J	1(j)	Recommendation
	1(l)	Recommendation
	1(m)	Sampling and collecting
	1(k)	Sampling and collecting
Declaration	1(b)	Declaration
Appendix	1(k)	Protocol for finds
	1(m)	Protocol for finds
	1(q)	Protocol for finds