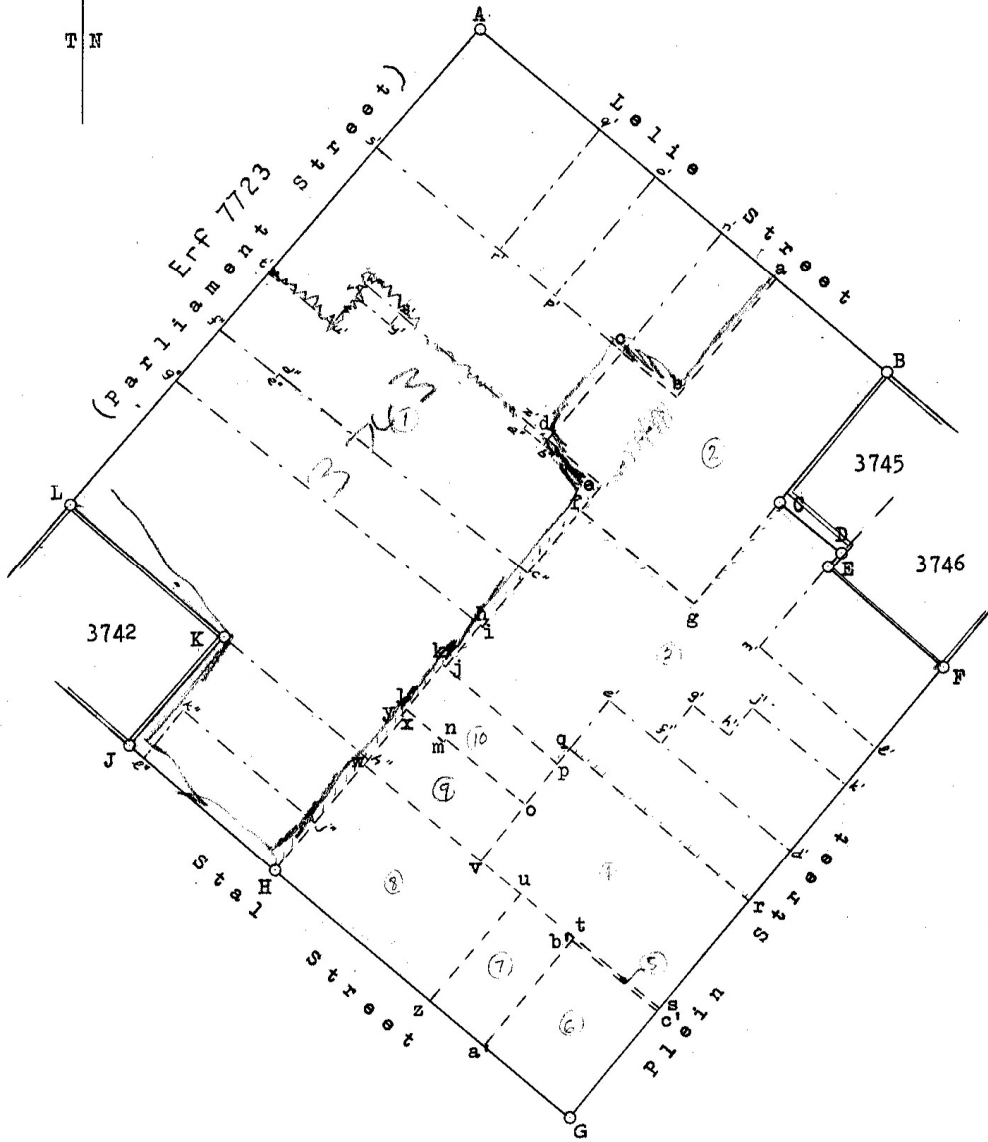


A. : 3/4" Sq. Iron peg.
 B.H. : 1" Iron peg.
 C.D.E. : Not beacons.
 F. : Wall corner.
 G. : 3/4" Iron peg.
 J.K.L. : 1/2" Iron peg in concrete.

Status:
 Boundaries AB and GHJ
 S/6910/5 v.1 p.187

Cape Feet	DIRECTION	CO-ORDINATES	
		y	x
		Constant	+160000.0 +11920000.0
AB 152.11	309.42.40	A +10183.08	+ 7223.87
BC 48.67	39.41.50	B +10066.06	+ 7321.06
CD 23.09	309.40.30	C +10097.15	+ 7358.51
DE 5.47	42.42.10	D +10079.38	+ 7373.25
EF 43.95	310.32.40	E +10083.09	+ 7377.27
FG 166.97	40. 5.00	F +10049.69	+ 7405.84
GH 109.48	130. 2.20	G +10157.20	+ 7533.59
HJ 54.59	129.30.00	H +10241.02	+ 7463.16
JK 41.75	221. 1.10	J +10283.14	+ 7428.44
KL 58.44	130.52.20	K +10255.74	+ 7396.94
LA 178.42	220.54.50	L +10299.93	+ 7358.70

No. 20066/63
 Approved
 D.P. [Signature]
 Surveyor-General.
 24.6.63



- ✓ (1) The figure A.a.b.c.d.e.f.i.h.j.k.y.x.H.J.K.L. represents Erf 3743 Cape Town. Vide Dgm. No. 2713/1941, D/T. 1943.10.489.
- ✓ (2) The figure a.B.g.f.e.d.c.b. represents Remdr. of Erf 3744 Cape Town. Vide Dgm. No. 6/1791, D/T. 1791.1.17a.
- ✓ (3) The figure C.D.E.F.r.q.p.j.h.i.f.g. represents Erf 3747 Cape Town. Vide Dgm. No. 690/1949, D/T. 1951.446.22294.
- ✓ (4) The figure q.r.s.v. represents Erf 3748 Cape Town. Vide Dgm. No. 4/1785, D/T. 1785.1.23.
- ✓ (5) The figure t.s.c'.b'. represents Erf 3749 Cape Town. Vide Dgm. No. 92/1868, D/T. 1868.22.247.
- ✓ (6) The figure b'.c'.G.a'. represents Erf 3750 Cape Town. Vide Dgm. No. 5/1785, D/T. 1785.1.24.
- ✓ (7) The figure u.t.a'.z. represents Remdr. of Erf 3751 Cape Town. Vide Dgm. No. 5/1777, D/T. 1777.1.46.
- ✓ (8) The figure w.u.z.H. represents Remdr. of Erf 3752 Cape Town. Vide Dgm. No. 40/1798, D/T. 1798.2.386.
- ✓ (9) The figure l.m.n.o.v.w.x.y. represents Erf 3753 Cape Town. Vide Dgm. No. 708/1893, D/T. 1893.47.3625.
- ✓ (10) The figure k.p.o.n.m.l. represents Erf 3754 Cape Town. Vide Dgm. No. 1466/1895, D/T. 1895.84.6993.

Scale 1: 500.

The Figure A. B. C. D. E. F. G. H. J. K. L.

represents 42894 square feet of land being

ERF 9240 CAPE TOWN,
 and comprises the properties as specified above.

in the City and Municipality of Cape Town,
 situated in the Division of Cape Province of Cape of Good Hope.

Surveyed in March 1963 by me

[Signature]
 Land Surveyor.

This diagram is annexed to C.C.T.N ^o 22754/1965	The original diagrams No. are as quoted above.	S.G. File No. S/9390/306. S. R. No. E. 605/63 Gen. Plan M 3209 Noting Plan CT 544 I 70
---------------------------------------------------------------	---------------------------------------------------	----------------------------------------------------------------------------------------------------

B
S