

Archaeological Impact Assessment

Title: Municipal Housing Project, Arniston.

Proposal to develop 106 new residential erven on 2.9 ha of land within the urban edge of Arniston by consolidating the existing Erf 376 and Erf 373.

Author of this report:

Prof H.J. Deacon Archaeologist, 49 Van Riebeeck Street, Stellenbosch 7600.

Tel/Fax 021 887 1540, Cell 082 682 7300, Email: hjdeacon@iafrica.co.za

Commissioned by

Cape Lowlands Environmental Services. Mr M Duckitt (Contact person) and Mr N Hanekom (Environmental Impact Assessor), PO Box 70, Darling 7345. Tel: 022 492 3435, Fax: 022 492 3435, Cell: 076 851 0476. Email: mduckitt@cles.co.za, nhanekom@cles.co.za

Project Consultant

ASLA Devco, Contact person: Mr David Douglas, PO Box 118, Gordons Bay 7151. Tel: 021 845 8330, Fax: 021 845 8552. Email: david@asla.co.za

West Dune Properties 314 Pty Ltd, Contact person: Mr Klaus-Gustav Gobel, PO Box 1304, Durbanville 7551. Tel: 021 914 1472, Cell: 082 464 8700. Email: klaus.gobel@sortino.co.za

Landowner

Cape Agulhas Municipality, Contact person: Mr Jonathan Martinus, PO Box 51, Bredasdorp 7280. Tel: 028 425 5500, Fax: 028 425 1019. Email: marthinus@caoeagulhas.com

Municipal Jurisdiction

Cape Agulhas 'B' Municipality, Overberg District Municipality.

5 January 2009

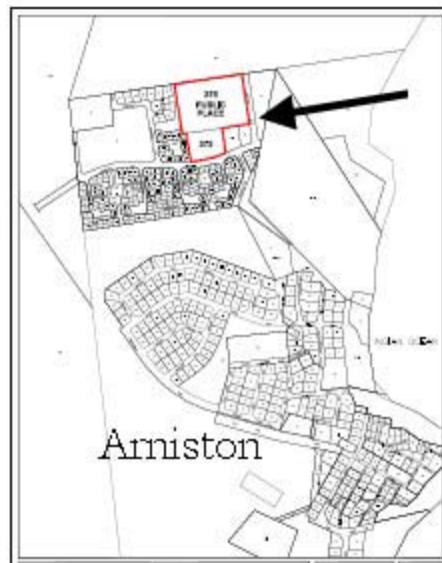


Figure 1. Location of Erven 376 and 373 on the northern edge of Arniston (1:50 000 3420, GPS 34° 39' 41.3" S; 20°13'41.1" E)

Executive Summary

A survey of the two erven, 376 used as a camping ground and the vacant 373, was undertaken to assess the possible impact on cultural resources. Other than the ablutions blocks on the camping ground there are no structures. There are no surface indications in the form of artefacts, shell or bone of archaeological or palaeontological resources that will be threatened by this development. The erven are in close proximity to the proclaimed Arniston Fisherman's Village with its distinctive architectural style that also is reflected in newly built houses adjacent to the erven. This harmony is worth preserving in any new development to minimise any visual impact on the ambiance of the area.

Background Information

Erf 376 is public open space with a dunal rise on the western side (Figs. 1-6). It is used as a camping ground and provided with basic services. Erf 373 is the undeveloped fore dune and fronts on Kampstraat (Figs. 7-9). The proclaimed heritage area, Arniston Fisherman's Village, is south and west of Kampstraat (Figs. 3-4 & 10). The style of the historic village has been carried over to recently built houses (Fig. 6) close to the erven giving a degree of architectural conformity outside the proclaimed area.

This report is part of a Basic Assessment. Rezoning is required.

Archaeological Background

The proximity of the erven to the coast makes this a prime area for the occurrence of shell middens, refuse from precolonial coastal settlements, that occur all along the coast. This makes the area potentially archaeologically sensitive.

Description of the property

Erf 376 is levelled grassed open ground (Fig. 5). The dunal topography is preserved on the western side (Fig.6) and on Erf 373. The dunal sands are heavily infested with exotic Acacias (Fig 8-9).

Methodology

The surface disturbances were examined for archaeological and palaeontological materials in a foot traverse.

Observations and Results

No archaeological or palaeontological materials were observed in traversing the erven. The degree to which the cover sands may mask any materials cannot be assessed on the available exposures.

Sources of Risk and Statement of Significance

The proximity to the coast increases the risks of any development exposing buried midden materials. However as there are no obvious indications of such materials on the surface the risks are considered low.

The significance is rated as low.

Recommended Mitigations

In this context the indicators of cultural resources would be *in situ* shell and bone from middens exposed in any excavations made in the course of development. Features like human burials can occur in unpredictable locations. It is recommended that should any excavations by chance uncover buried palaeontological or archaeological materials including human remains that Heritage Western Cape is notified (Mr N Wiltshire, Heritage Resource Management Services, HWC, Private Bag X9067, Cape Town 8000, Tel:021 483 9743, Fax:021 483 9842, nwiltshire@pgwc.gov.za).



Figure 2. Satellite image of Arniston showing the erven in relation to the town

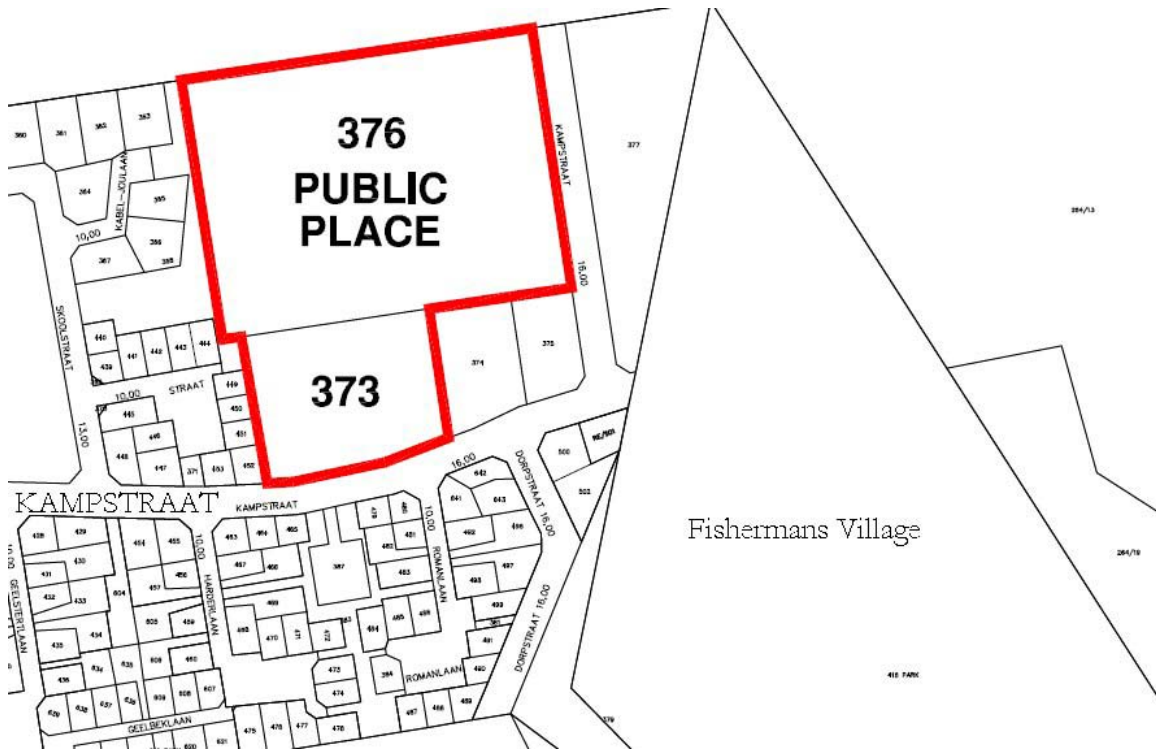


Figure 3. The layout of erven in the surrounds of 376 & 373 and the position of the Fisherman's village

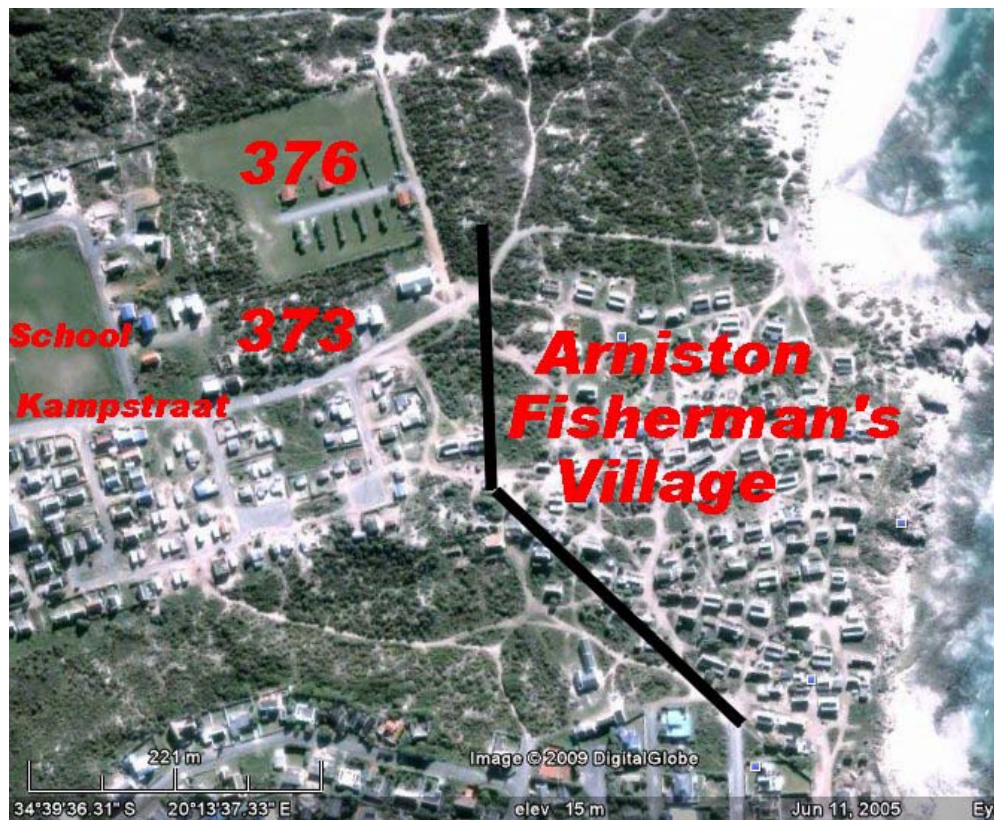


Figure 4. Satellite detail showing the approximate boundary of the village



Figure 5. North western corner of Erf 376 showing the camping ground and facilities



Figure 6. North western boundary showing the style of modern housing adjacent to Erf 376



Figure 7. Streetscape on Kampstraat, southern boundary of Erf 373



Figure 8. Erf 373 looking south east across Kampstraat towards the Fisherman's Village



Figure 9. Erf 373 looking eastwards across undeveloped land towards the coast



Figure 10. Monument plaque at entrance to the Fisherman's Village, south east of the erven