



COBUS DREYER

Pr. Archaeologist/Heritage Specialist

**P.O. Box 12910
BRANDHOF 9324
Bloemfontein
dreyerj@telkomsa.net**

**Tel: 051-444 1187
Fax: 051-444 4395
Cell: 083 357 7982**

20 JULY 2006

FIRST PHASE ARCHAEOLOGICAL AND CULTURAL HERITAGE ASSESSMENT OF THE PROPOSED TOWNSHIP DEVELOPMENTS AT CLOETESPARK, BETHULIE, FREE STATE

EXECUTIVE SUMMARY

A new township extension is planned at Cloetespark, Bethulie, Free State.

No archaeological or cultural remains were found in the development area.

I recommend that the proposed developments and planning of the site may proceed.

INTRODUCTION AND DESCRIPTION

INVESTIGATION

The site for the residential extensions at Cloetespark, Bethulie, was visited on 12 July 2006. Mr Piet de Bie from Phethogo Consultants, Bloemfontein, gave directions to the site.

The area was examined for possible archaeological and historical material and to establish the potential impact on any cultural material that might be found. The Heritage Impact Assessment (HIA) is done in terms of the National Heritage Resources Act (NHRA), (25 of 1999) and under the Environmental Conservation Act, (73 of 1989).

LOCALITY

The proposed residential developments are planned adjacent to the existing township of Cloetespark (Map 1) and along the entrance road from Bethulie (Map 2).

The area is bisected by footpaths, prominent storm water furrows (Figs.4-6), muddy pools and water catchment dams (Fig.7). It seems as if the whole area lies the actual direction of the natural storm water flow.

The culvert at point D (Fig.11) directs storm water from the residential area onto the land proposed for township development (Fig.13).

The soil cover consists of natural grazing (Fig.2) and contains no cultural or historical material.

A garden irrigation system is still very prominent in the Bethulie suburb adjacent to the planned developments (Figs.14-15).

The placing of the proposed developments is indicated on Map 3 (3025DB) (Surveyor-General 1973).

The following GPS coordinates (Cape scale) were taken:

A	30°30'28"S. 025°58'20"E Altitude 1278m (Figs.1-2).
Bore hole	30°30'27"S. 025°58'20"E Altitude 1278m (Fig.3).
B	30°30'25"S. 025°58'24"E Altitude 1272m (Fig.4).
C	30°30'15"S. 025°58'25"E Altitude 1273m (Figs.5-6).
Dam	30°30'15"S. 025°58'18"E Altitude 1275m (Fig.7).
D	30°30'13"S. 025°58'06"E Altitude 1280m (Figs.8-12).

RESULTS

No indication of any archaeological or historical material was found in the proposed area.

IMPACT ASSESSMENT

The proposed residential developments at Cloetespark, Bethulie, will have no impact on any archaeological or cultural heritage remains at the site.

RECOMMENDATIONS

There are no obvious reasons to delay the commencement of further planning and development of the site and I recommend that the proposed residential developments at Cloetespark, Bethulie, should proceed.

MITIGATION

Concerning the area for the proposed developments, no mitigation measures will be required.

ACKNOWLEDGEMENTS

I thank Me Piet de Bie of Phethogo Consulting, Bloemfontein, for involving me in the project.

SELECT BIBLIOGRAPHY:

DEACON, J. 1992. Archaeology for Planners, Developers and Local Authorities. Cape Town: National Monuments Council.

DREYER, J. 1996. Introduction to Free State Iron Age Archaeology. In: Guide to archaeological sites in the Free State and Lesotho. Southern African Association of Archaeologists (SA3), 14th Biennial Conference, Bloemfontein, Post-conference tour 5-8 July 1996. Bloemfontein: National Museum.

DREYER, J. 2000. Mountains and Rivers of the Free State - Manual for field research / Berge en Riviere van die Vrystaat – Handleiding vir veldnavorsing. Bloemfontein: University of the Free State, Department of Anthropology, Occasional Paper No. 2.

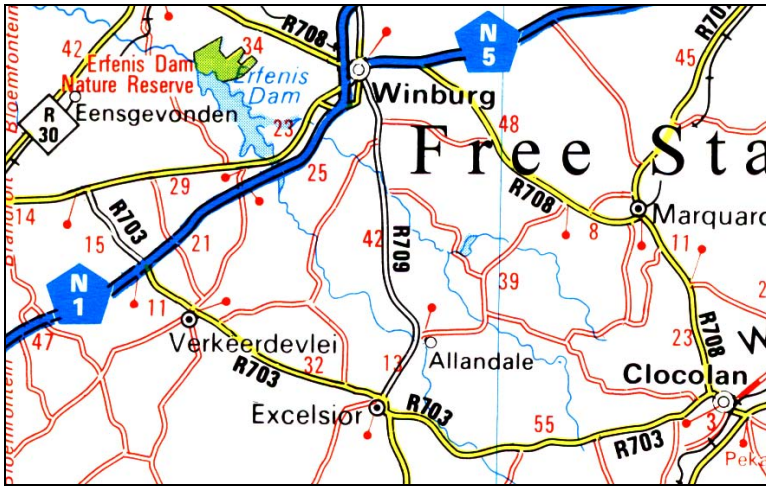
HUMPHREYS, A.J.B. 1986. Searching for the past. Cape Town: David Philip.

MAGGS, T.M. 1976. Iron Age Communities of the Southern Highveld. Pietermaritzburg: Natal Museum.

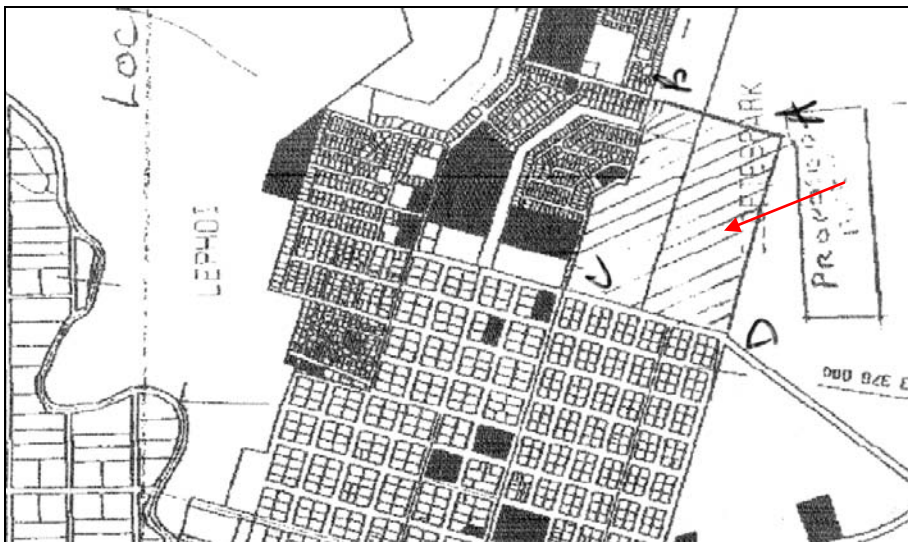
PISTORIUS, J.C.C. 1994. Eskom Archaeological Site Identification Guide. Johannesburg: Eskom.

SURVEYOR-GENERAL O.F.S. 1973. Index of Orange Free State Farms. Bloemfontein.

LIST OF ILLUSTRATIONS



Map 1 Locality of Excelsior in relation to Verkeerdevlei, Winburg and Cloccolan.



Map 2 Locality of the proposed township extensions at Cloetepark, Bethulie. GPS points indicated as A-D.



Map 3 Locality of the proposed area of development at Cloetespark, Bethulie (3025DB).



Fig.1 View towards entrance road at Point A.



Fig.2 View south at Point A.



Fig.3 Bore hole at Point A.



Fig.4 View from Point B along the old entrance road to Cloetespark.



Fig.5 View from point C towards Cloetespark, Bethulie.



Fig.6 View from point C facing south.



Fig.7 View of the dam where livestock come to drink.



Fig.8 Point D facing north east.



Fig.9 Point D facing east.



Fig.10 Facing north from point D.



Fig.11 Storm water culvert from residential area.



Fig.12 Storm water furrow running through development area.



Fig.13 Storm water ditch from point D.



Fig.14 Irrigation furrow running into the residential area of Bethulie.



Fig.15 Irrigation water is tapped off from the mainline into the vegetable gardens.