

## Archaeological Impact Assessment Report

**Project Title:** Darling Fresh Chickens Pty Ltd (Reg no. 2006/019569/07)

**Project Location:** 10 km north of Darling, Swartland 'B' Municipality, West Coast District 'C' Municipality, Malmesbury Magisterial District, Western Cape.

**Farm Number:** 460/2      **Size:** 27.64 ha

**Author of this report:** HJ Deacon PhD, Consulting Archaeologist and Heritage Resources Manager,

**Contact details:** 49 van Riebeeck St, Stellenbosch 7600. Tel/Fax: 021 887 1540. Cell: 082 682 7300. Email: [hjdeacon@iafrica.com](mailto:hjdeacon@iafrica.com)

**Environmental Consultant:** Cape Lowlands Environmental Services cc

**Contact person:** Mr Nicolas Hanekom, PO Box 70, Darling 7345. Fax: 022 492 3435. Tel: 022 492 3435. Cell: 076 851 0476. Email: [nhanekom@cles.co.za](mailto:nhanekom@cles.co.za)

**Registered owner:** De Lelie Trust, Trust No. IT 867/2004

**Contact person:** Mr Pieter Paul Pienaar, PO Box 38, Darling 7345. Tel/Fax: 022 492 2939, Cell: 072 922 5105.

**Date:** 18 March 2007

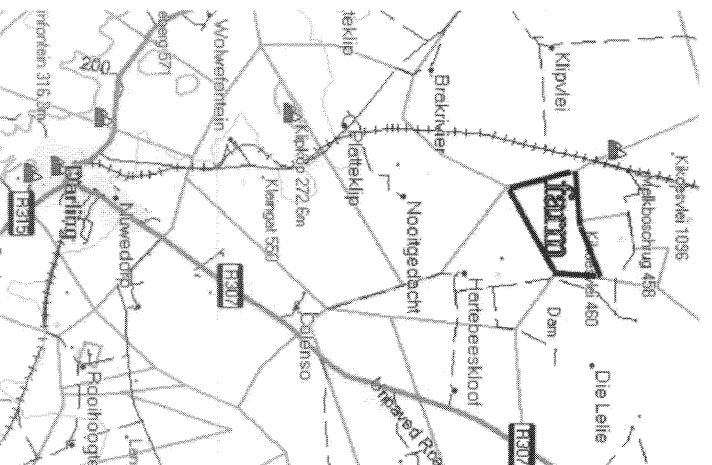


Figure 1. Location Farm 460/2

### **Executive Summary**

The property, Farm No. 460/2, 10 km north of Darling, was surveyed for archaeological, palaeontological resources. There are no structures on the property. The development, housing for poultry, will be on ploughed farmland land and this minimises the impact. The soils are underlain by ferricrete (koffieklip) and are unfavourable for the preservation of bone and shell and no palaeontological remains were recorded. No Stone Age artefacts were seen in the plough zone on the property but a silcrete flake was recorded in a dam excavation at location De 1. This suggests that while scattered stone artefacts may occur in the landscape their significance is low. No mitigation in respect of archaeological or palaeontological resources is recommended.

### **Background Information**

This report is part of an EIA. The application is develop facilities for housing poultry on a farm located north of Darling (Figure 1). The property is zoned as Agriculture 1 and rezoning is not required. The development is part of the intensification of land use in the area. 20 chicken broiler houses, situated in four sets of five with each set occupying 3.6 ha will be constructed on the property. The total footprint for the 20 broilers including roads and infrastructure is 16.9 ha.

### **Description of the property**

The property (33°16'54.03" S; 18°23'40.50" E) is open ploughed farmland land with no structures.

### **Archaeological and palaeontological potential**

Stone Age hunter-gatherers and Khoekhoe herders would have ranged through the area in precolonial times and historical materials could occur.

### **Methodology**

The development requires the construction of four clusters chicken broiler houses on different parts of the property. Five possible locations have been identified. Each location, a cluster will occupy an area some 300 m x 120 m, was traversed. The positions of the locations (Le 1-5) are recorded on a GPS plot (Figure 2). Exposures of the subsurface in nearby disturbances were examined to evaluate the potential for buried occurrences.

### **Observations**

The locations are relatively flat ground (Figure 3) at some 60 m asl. In exposures near locations De 1 and De 5 (Figure 2) profiles show ferricrete (koffieklip) and capped by sandy soil, substrates not favourable for the preservation of palaeontological remains. No cultural material was recorded in the plough zones. A silcrete flake was noted in a

disturbed context at De 1. Dispersed stone artefacts would be expected in such a landscape so the find is not rated as significant.

#### Sources of risk

There is a risk that the foundations for structures may uncover stone artefacts but the risks are considered low. The risks of uncovering palaeontological remains given the nature of the substrates are negligible.

#### Statement of significance and field rating

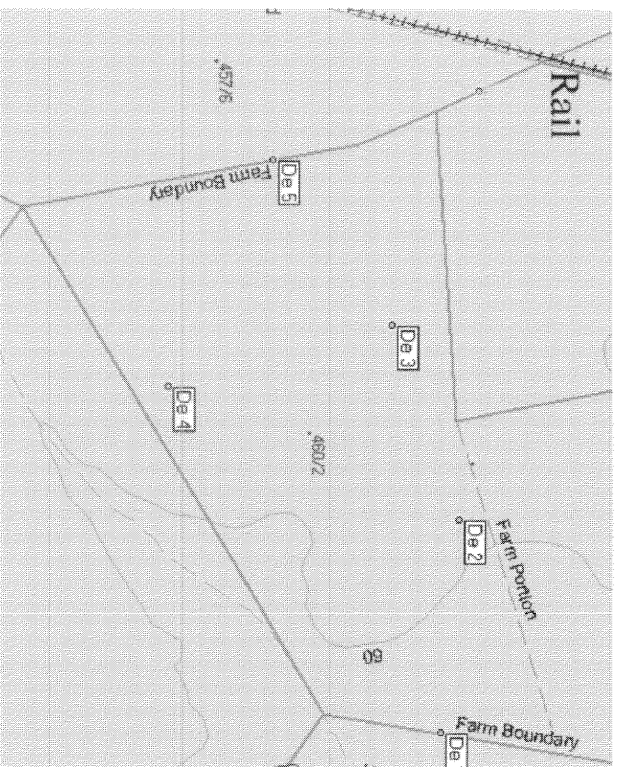
The significance of the archaeological resources on the property is rated as low.

#### Recommended mitigations

No mitigations are recommended with the proviso that should development by chance uncover any archaeological, palaeontological or other cultural remains, including human remains, that Heritage Western Cape be notified (Mr N Ndlovu, Senior Heritage Officer – Archaeologist, Private Bag X9067, Cape Town 8000, Tel: 021 483 9687, Fax: 021 483 9842, email: [indlovu@pgwc.gov.za](mailto:indlovu@pgwc.gov.za) ).

#### Conclusions

The survey of the farm 260/2 showed no significant archaeological or palaeontological resources that warranted mitigation.



**Figure 2.** Farm 260/2 showing the five possible locations (De 1-5) from which four will be chosen for development.

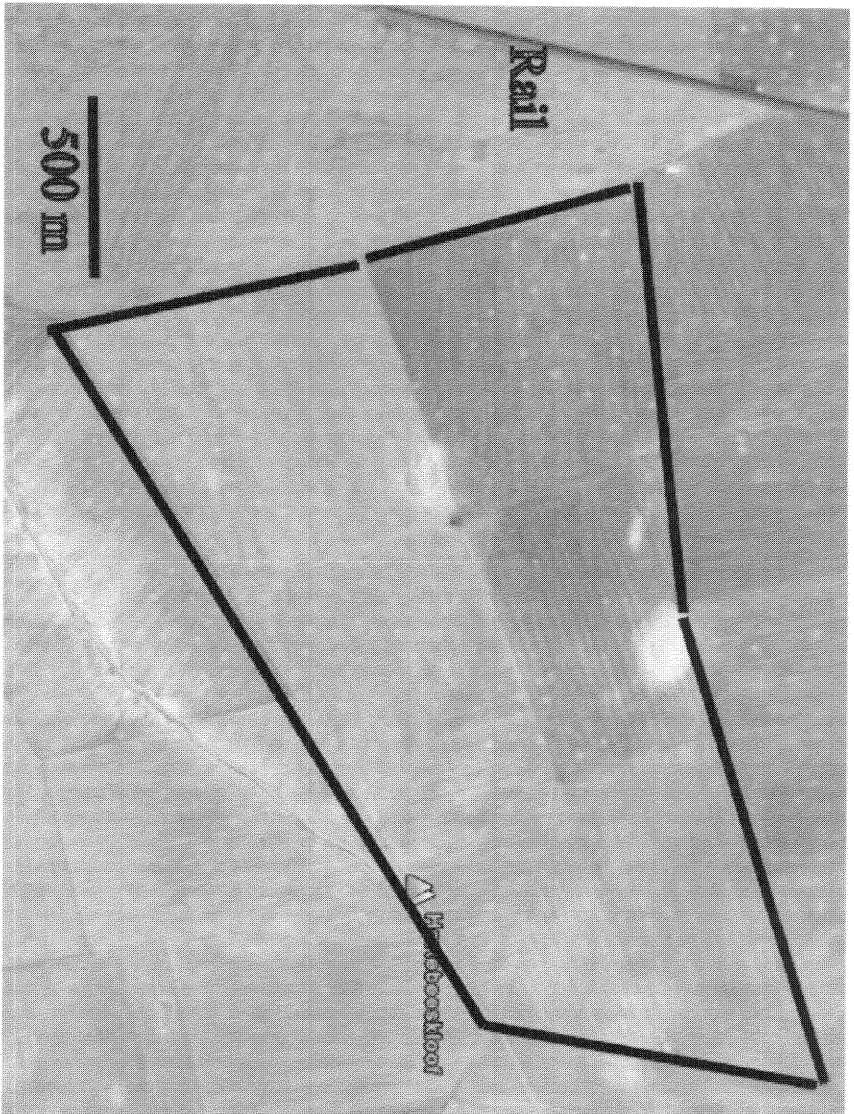


Figure 3. Aerial view of Farm 260/2 showing the extent of cultivation.