



COBUS DREYER

Pr. Archaeologist/Heritage Specialist

**P.O. Box 12910
Brandhof
9324
dreyerj@telkomsa.net**

**Tel: 051-444 1187
Fax: 051-444 4395
Cell: 083 357 7982**

14 October 2005

ARCHAEOLOGICAL AND CULTURE HISTORY ASSESSMENT OF THE PROPOSED EXTENSIONS TO THE SHEEP FEEDLOT AT THE FARM ELIM 1053, SENEKAL, FREE STATE

INVESTIGATION

The proposed land for the extensions to the sheep feedlot at the farm Elim 1053, Senekal, was visited on 12 August 2005 in the company of Dr Johan du Preez of Cebo Environmental Consultants, Bloemfontein. At the farm we were taken around by the landowner, Mr L.A. Lamprecht and his son.

The land was examined for possible archaeological and historical material and to establish the potential impact on any cultural material that might be found. The Heritage Impact Assessment (HIA) is done in terms of the National Heritage Resources Act (NHRA), (25 of 1999) and under the Environmental Conservation Act, (73 of 1989).

LOCALITY

The farm Elim 1053 lies to the north-east of Senekal on the gravel road to Libertas (Map 2) (28°07'16"S 027°41'59"E Altitude 1549m). (2827BA) GPS co-ordinates are given in Cape scale.

FINDS

The area proposed for extensions to the existing sheep byres does not contain any archaeological, cultural or historical remains.

No indication of any archaeological or historical material was found on the surface neither were any stone tools or ceramic ware found.

RECOMMENDATIONS

No obvious reasons could be found to delay the commencement of further planning and development of the site.

After examination by the archaeologist, it is recommended that the proposed developments may proceed.

MITIGATION

Concerning the area for the proposed development, no mitigation measures are needed.

ACKNOWLEDGEMENTS

Dr Johan du Preez of CEBO Environmental Consultants, Bloemfontein, took me to the site and supplied information on the site.

SELECT BIBLIOGRAPHY:

DEACON, J. 1992. Archaeology for Planners, Developers and Local Authorities. Cape Town: National Monuments Council.

DREYER, J. 1996. Introduction to Free State Iron Age Archaeology. In: Guide to archaeological sites in the Free State and Lesotho. Southern African Association of Archaeologists (SA3), 14th Biennial Conference, Bloemfontein, Post-conference tour 5-8 July 1996. Bloemfontein: National Museum.

HUMPHREYS, A.J.B. 1986. Searching for the past. Cape Town: David Philip.

MAGGS, T.M. 1976. Iron Age Communities of the Southern Highveld. Pietermaritzburg: Natal Museum.

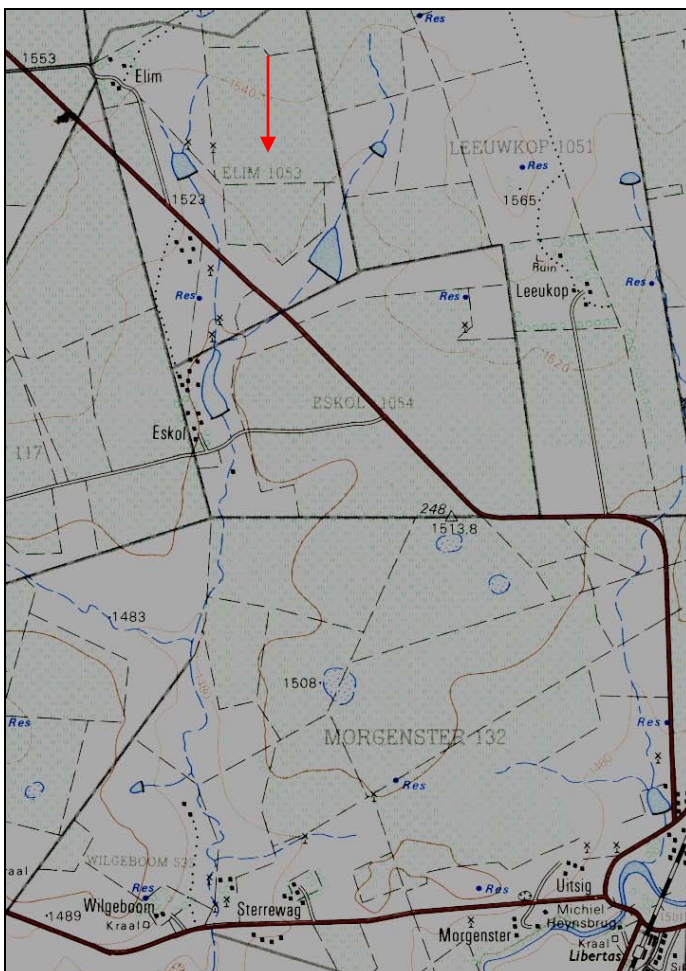
PISTORIUS, J.C.C. 1994. Eskom Archaeological Site Identification Guide. Johannesburg: Eskom.

SURVEYOR-GENERAL O.F.S. 1973. Index of Orange Free State Farms. Bloemfontein.

LIST OF ILLUSTRATIONS:



Map 1 Locality of Senekal and Libertas.



Map 2 Locality of the farm Elim 1053 in relation to Libertas (2827BA).



Fig.1 Existing feedlot at Elim 1053 Senekal.