



COBUS DREYER

Pr. Archaeologist/Heritage Specialist

**P.O. Box 12910
BRANDHOF 9324
Bloemfontein
dreyerj@telkomsa.net**

**Tel: 051-444 1187
Fax: 051-444 4395
Cell: 083 357 7982**

20 MAY 2011

ARCHAEOLOGICAL AND CULTURAL HERITAGE ASSESSMENT OF THE PROPOSED GFC COMPOST DEVELOPMENTS AT REITZ, FREE STATE

EXECUTIVE SUMMARY

A compost development is planned at Reitz, Free State. The area of development lies to the north of the existing township of Petsana. The surroundings are disturbed by previous agricultural activities.

No archaeological or any cultural remains were found at the site.

Mitigation measures are not necessary and I recommend that the proposed developments and planning of the site may proceed.

INTRODUCTION AND DESCRIPTION

INVESTIGATION

The site for the proposed compost development at Reitz was visited on 8 March 2011. Officials from Incline Environmental Consultants, Bloemfontein, took me to the site.

The area was examined for possible archaeological and historical material and to establish the potential impact on any cultural material that might be found. The Heritage Impact Assessment (HIA) is done in terms of the National Heritage Resources Act (NHRA), (25 of 1999) and under the Environmental Conservation Act, (73 of 1989).

The study aims to locate and evaluate the significance of cultural heritage sites, archaeological material, manmade structures older than 60 years, and sites associated with oral histories and graves that might be affected by the proposed development.

LOCALITY

The proposed GFC Compost development is planned about four kilometres from the town of Reitz, (Map 1). The placing of the developments is indicated on Map 2.

The following GPS coordinates (Cape scale) were taken (2728CD) (Surveyor-General 1973):

- | | |
|---|--|
| A | 27°47'11"S. 028°27'09"E Altitude 1638m (Figs.1&2). |
| B | 27°47'24"S. 028°27'12"E Altitude 1654m (Fig.3). |
| C | 27°47'14"S. 028°27'17"E Altitude 1641m (Fig.4). |
| D | 27°48'19"S. 028°26'10"E Altitude 1624m (Figs.5&6). |

RESULTS

No archaeological or any cultural remains were found at the site during the investigation.

IMPACT ASSESSMENT

No indication of any archaeological or historical material was found in the proposed area.

The proposed development of a compost plant at Reitz will have no impact on any archaeological or cultural heritage remains at the site.

RECOMMENDATIONS

There are no obvious reasons delay the commencement of further planning and development of the site and I recommend that the proposed developments should proceed.

MITIGATION

Concerning the area for the proposed developments, no mitigation measures will be required.

ACKNOWLEDGEMENTS

I thank Hanri van Jaarsveld and Louis de Villiers from H2ON Consultants, Bloemfontein, for taking me to the site.

SELECT BIBLIOGRAPHY:

DEACON, J. 1992. Archaeology for Planners, Developers and Local Authorities. Cape Town: National Monuments Council.

DREYER, J. 1996. Introduction to Free State Iron Age Archaeology. In: Guide to archaeological sites in the Free State and Lesotho. Southern African Association of Archaeologists (SA3), 14th Biennial Conference, Bloemfontein, Post-conference tour 5-8 July 1996. Bloemfontein: National Museum.

DREYER, J. 2000. Mountains and Rivers of the Free State - Manual for field research / Berge en Riviere van die Vrystaat – Handleiding vir veldnavorsing. Bloemfontein: University of the Free State, Department of Anthropology, Occasional Paper No. 2.

HUMPHREYS, A.J.B. 1986. Searching for the past. Cape Town: David Philip.

MAGGS, T.M. 1976. Iron Age Communities of the Southern Highveld. Pietermaritzburg: Natal Museum.

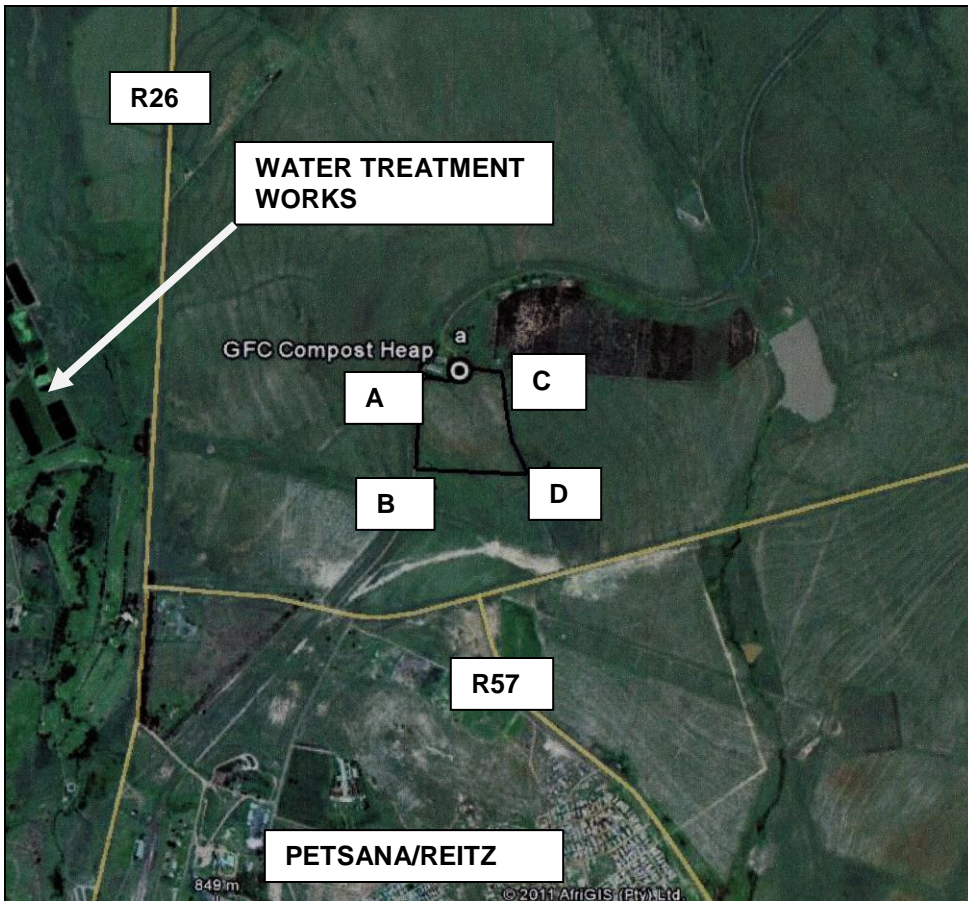
PISTORIUS, J.C.C. 1994. Eskom Archaeological Site Identification Guide. Johannesburg: Eskom.

SURVEYOR-GENERAL O.F.S. 1973. Index of Orange Free State Farms. Bloemfontein.

LIST OF ILLUSTRATIONS:



Map 1 Reitz in relation to Bethlehem, Petrus Steyn and Warden.



Map 2 Placing of the CFG Compost plant at Reitz (2728CD). Coordinate point are indicated.



Fig.1 View across the proposed site of development at Point A facing south.



Fig.2 View across the proposed site of development at Point A facing east.



Fig.3 View from Point B facing north.



Fig.4 View from point C along the area of development facing east.



Fig.5 View from Point D.



Fig.6 View from Point D facing east.